

## IMPACTS FOR **D8**

Winds – **High**

Storm Surge – **High**

Rainfall/Flash Flooding – **High**

Tornadoes – **Low**

Waves - **Moderate**

# TROPICAL DEPRESSION NINETEEN BRIEFING



11:00 AM CDT  
Saturday, September 12, 2020

Prepared by:  
Chris Landsea

*Tropical Analysis and Forecast Branch  
NWS National Hurricane Center*



NHC\_TAFB

[www.nhc.noaa.gov](http://www.nhc.noaa.gov)

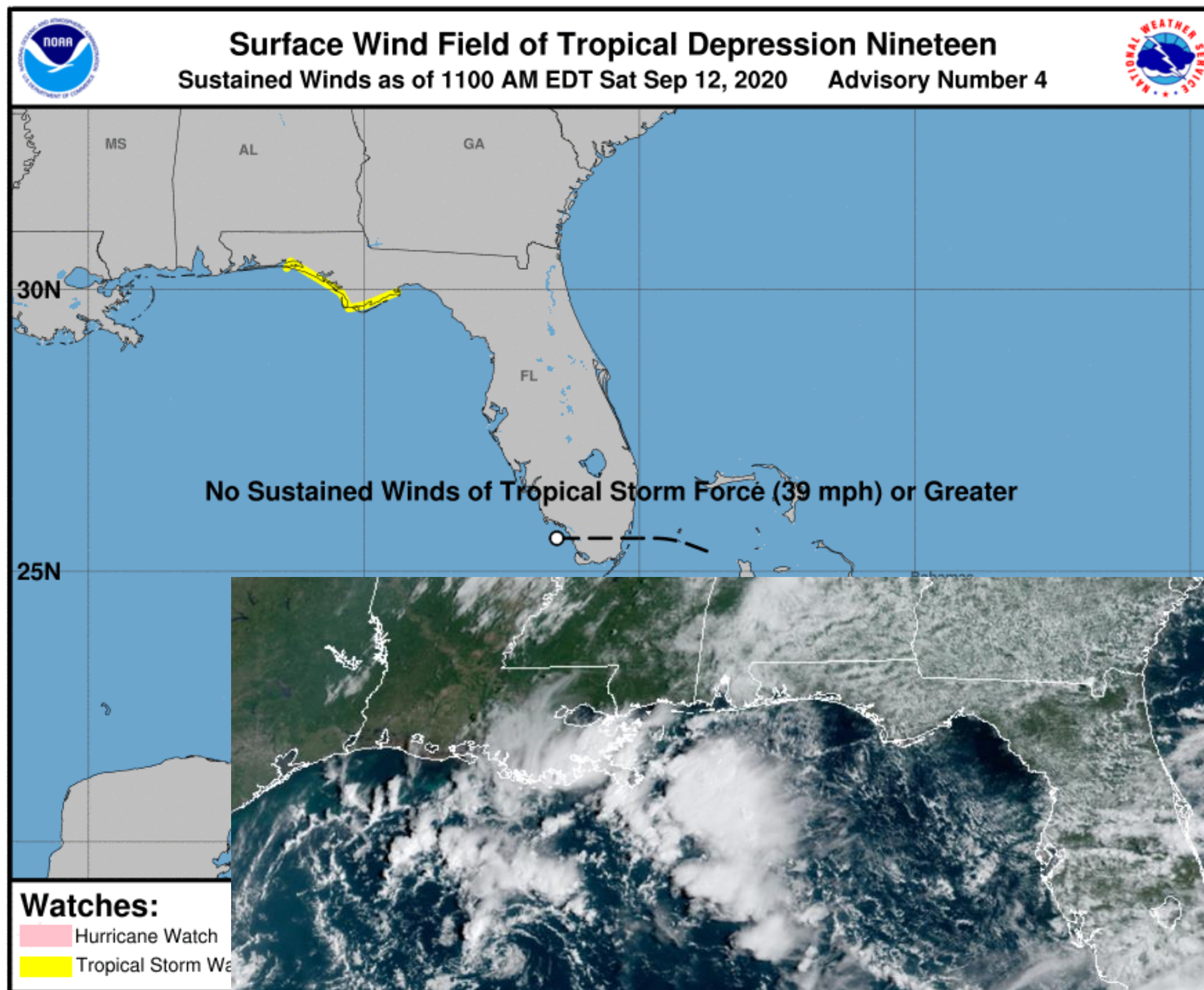


# Situation Overview

## Tropical Depression Nineteen



Tropical Analysis and Forecast Branch  
NWS National Hurricane Center



**...DEPRESSION EXPECTED TO BECOME  
A TROPICAL STORM OVER THE GULF  
OF MEXICO LATER TODAY OR  
TONIGHT...**

### SUMMARY OF 1000 AM CDT INFORMATION

LOCATION...25.6N 81.5W  
ABOUT 35 NM OF NAPLES FLORIDA  
MAXIMUM SUSTAINED WINDS 30 KT  
PRESENT MOVEMENT...W AT 8 KT

PEAK SEAS 8 FT

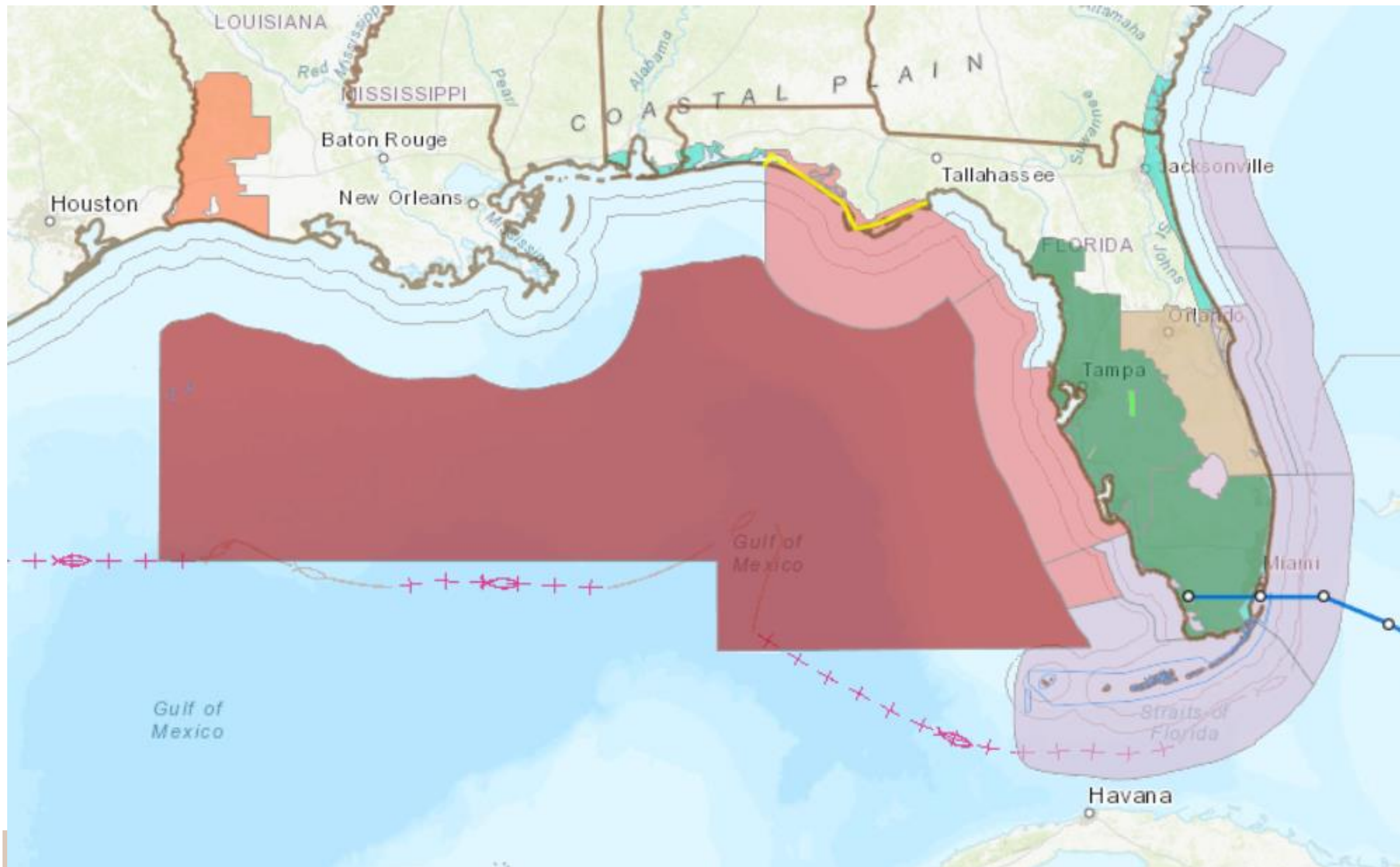


# Hazards Map

## Tropical Depression Nineteen



Tropical Analysis and Forecast Branch  
NWS National Hurricane Center



- Tropical Storm Warning
- Tropical Storm Watch
- Gale Warning
- Small Craft Advisory
- Flood Warning (Point)
- Flood Watch (Areal)

■ <https://nowcoast.noaa.gov/>

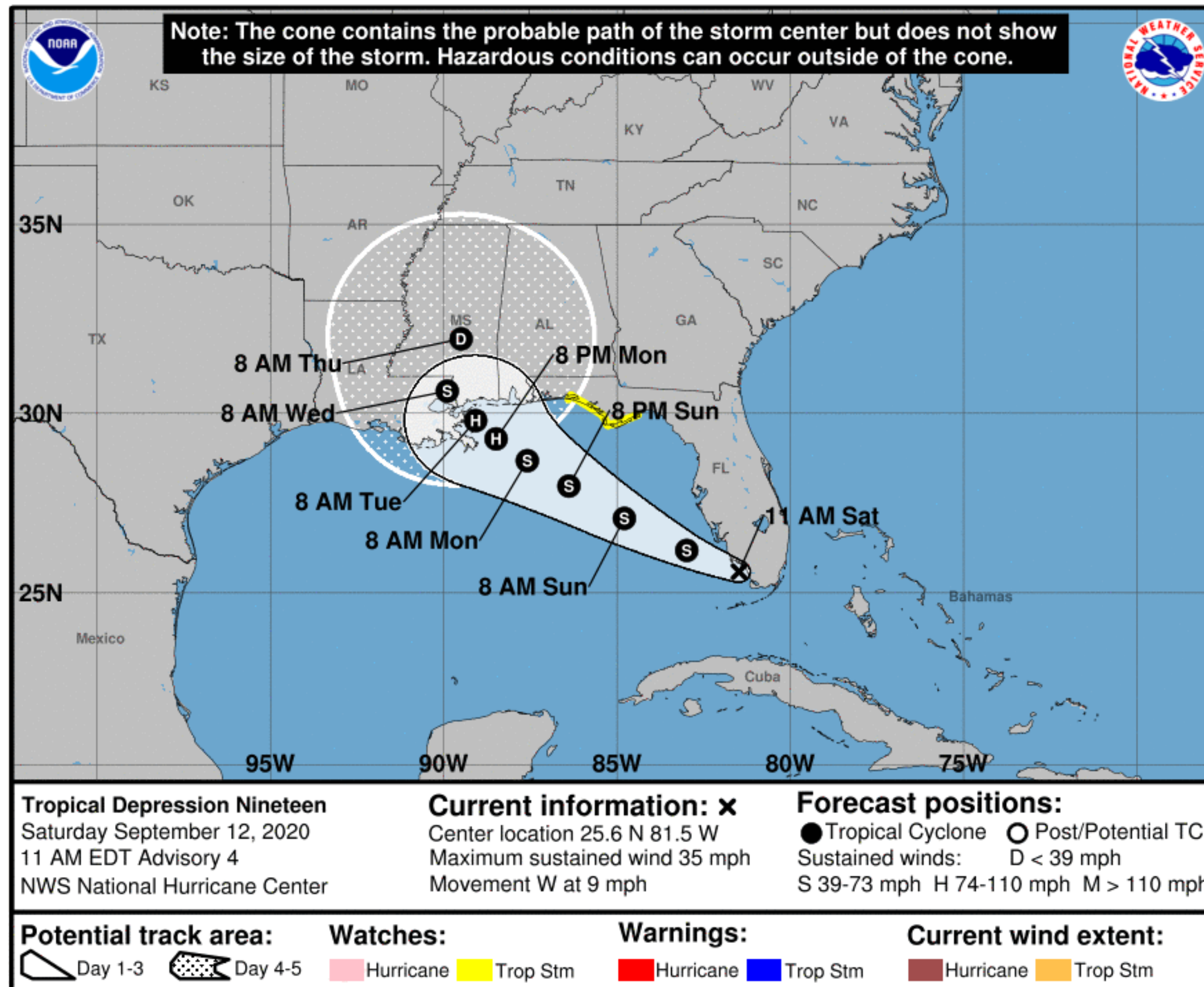


# Forecast Information

## Tropical Depression Nineteen



Tropical Analysis and Forecast Branch  
NWS National Hurricane Center



**NOTE:** Do not focus on the exact track. Impacts can occur well outside the area enclosed by the cone.

- The tropical depression will turn gradually toward the WNW and slow down during the next three days
- Steady strengthening is expected until landfall
- Landfall timing is very uncertain due to the anticipated slow speed: Anytime between Monday afternoon and Wednesday morning
- Current center forecast positions through the next 5 days illustrated by dots
- White swath of potential track is average track error added to each side of the forecast track through day 3
- Hatched swath of potential track is average track error added to each side of the forecast track days 4-5

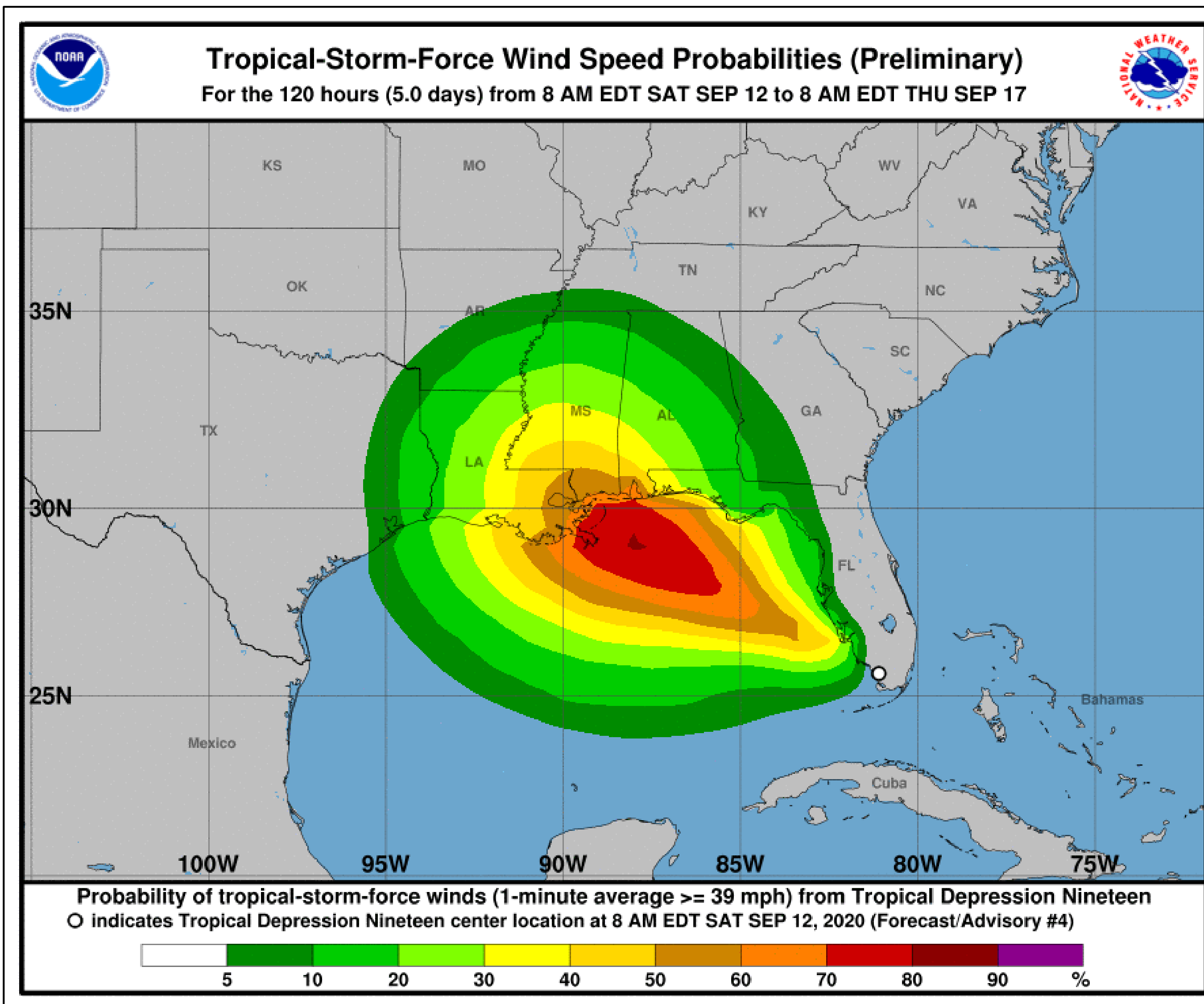
\*\* Swaths are calculated using average track errors and actual track may be well inside, or possibly outside the potential track areas indicated.

# T.S. Wind Speed Probabilities

## Tropical Depression Nineteen



Tropical Analysis and Forecast Branch  
NWS National Hurricane Center



- Apalachicola, FL – 40%
- Panama City and Destin, FL – 45%
- Pensacola, FL – 35%
- Mobile and Dauphin Island, AL – 45%
- Pascagoula and Gulfport, MS – 50%
- New Orleans, LA – 45%
- Venice and Grand Isle, LA – 55%
- Morgan City and Vermillion Bay, LA – 35%
- Cameron and Lake Charles, LA – 20%
- Port Arthur, LA (Sabine Pass) – 10%
- Probabilities of sustained tropical storm force winds (34 kt to 63 kt) over the next 5 days, based off this cyclone's wind radii and track.
- Clear or dark green are the lowest chances of 0-30%.
- Yellow to orange is 31-70%
- Red through purple are the highest probabilities of 71%-100%
- See the color bar below the image for more details.

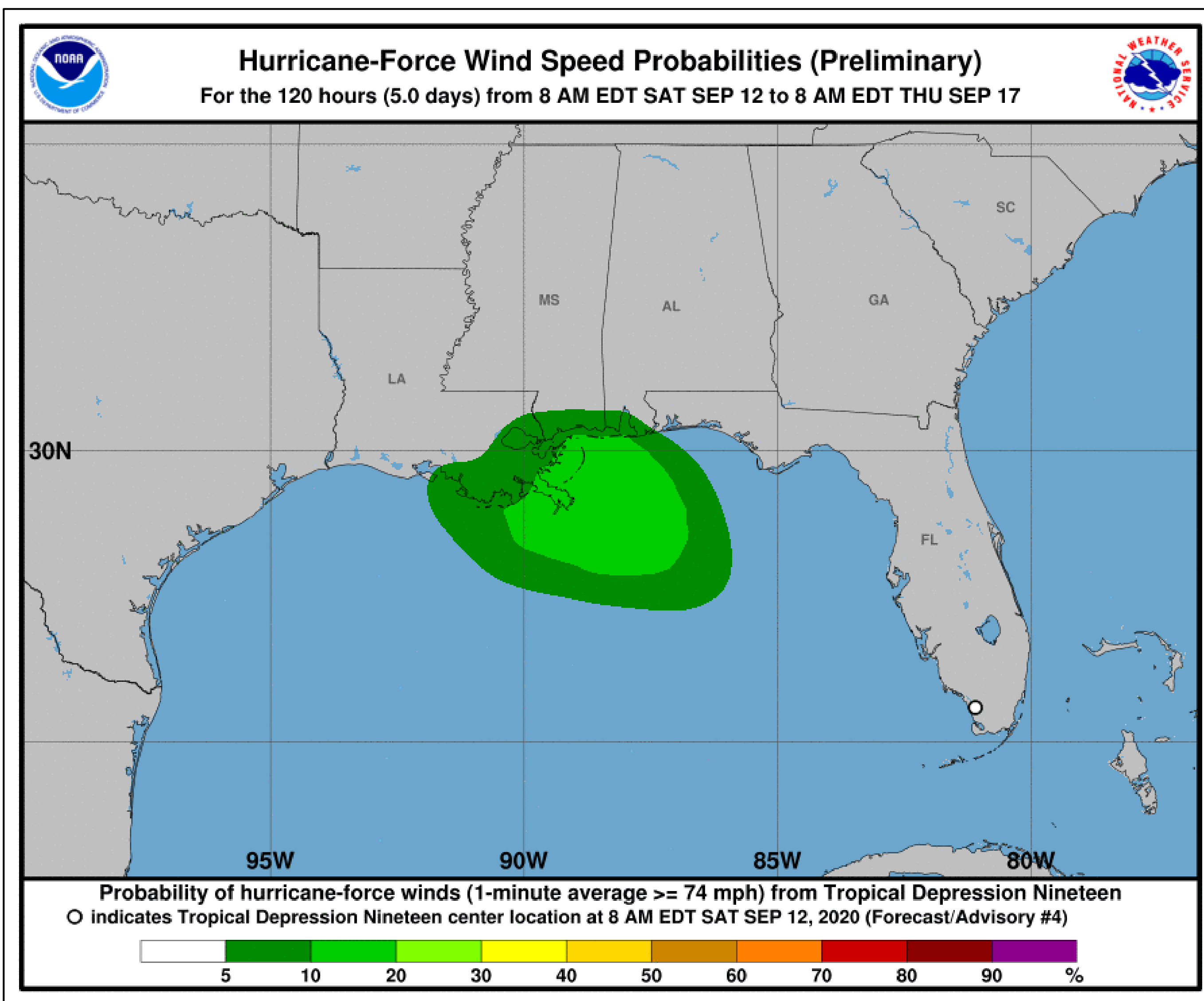


# Hurricane Wind Speed Probabilities

Tropical Depression Nineteen



Tropical Analysis and Forecast Branch  
NWS National Hurricane Center



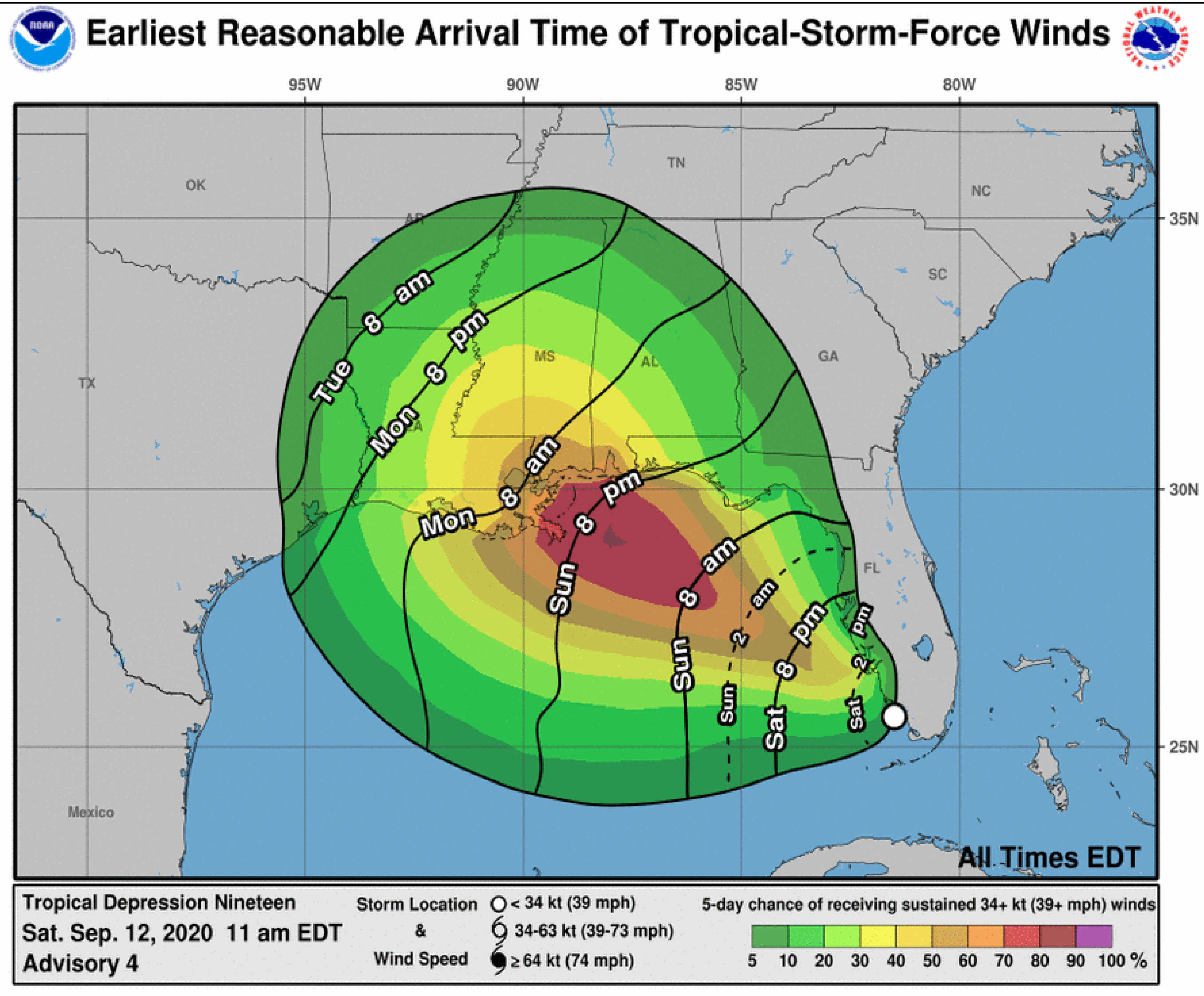
- Pascagoula and Gulfport, MS – 5%
- New Orleans, LA – 5%
- Venice and Grand Isle, LA – 5%
- Probabilities of sustained hurricane force winds (64 kt +) over the next 5 days, based off this cyclone's wind radii and track.
- Clear or dark green are the lowest chances of 0-30%.
- See the color bar below the image for more details.

# Earliest Reasonable Time of Arrival and Tropical Storm Windspeed Probabilities

## Tropical Depression Nineteen



Tropical Analysis and Forecast Branch  
NWS National Hurricane Center



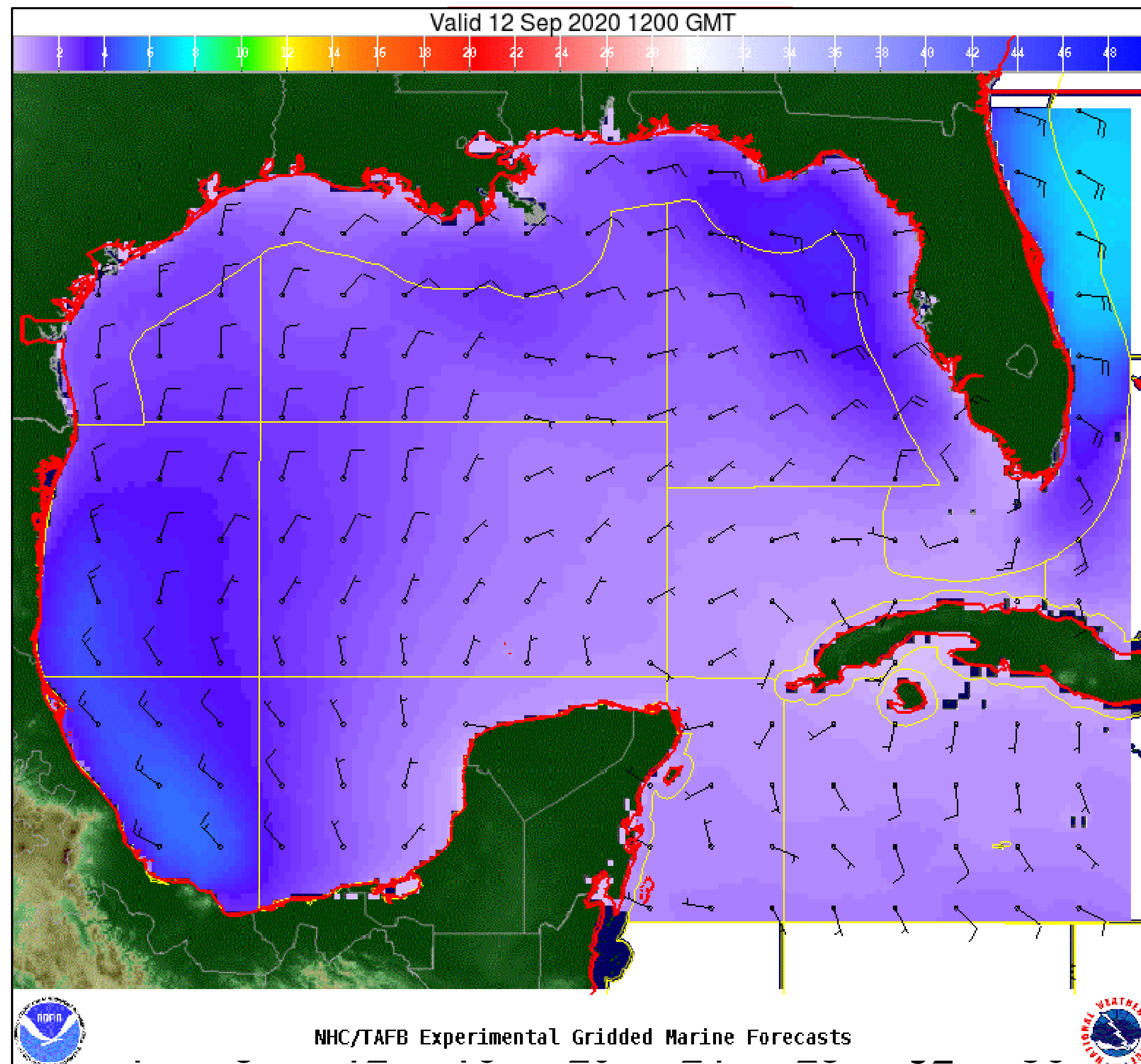
- Apalachicola, FL – Sunday afternoon
- Panama City and Destin, FL – Sunday night
- Pensacola, FL – Sunday night
- Mobile and Dauphin Island, AL – Sunday night
- Pascagoula and Gulfport, MS – Sunday night
- New Orleans, LA – Monday morning
- Venice and Grand Isle, LA – Monday morning
- Morgan City and Vermillion Bay, LA – Monday morning
- Cameron and Lake Charles, LA – Monday afternoon
- Port Arthur, LA (Sabine Pass) – Monday night
- The earliest reasonable time of arrival of Tropical Storm Force Winds (34kt to 63 kt) for this cyclone based off the current track and wind radii.
- Clear or dark green are the lowest chances of 0-30%.
- Yellow to orange is 31-70%
- Red through purple are the highest probabilities of 71%-100%
- See the color bar below the image for more details.

# Wind And Waves

## Tropical Depression Nineteen



Tropical Analysis and Forecast Branch  
NWS National Hurricane Center



### Current Conditions

7am CDT, Saturday, September 12<sup>th</sup>, 2020

Peak Winds: 15 kt (in D8 SRR)

Peak Seas: 6 ft (in D8 SRR)

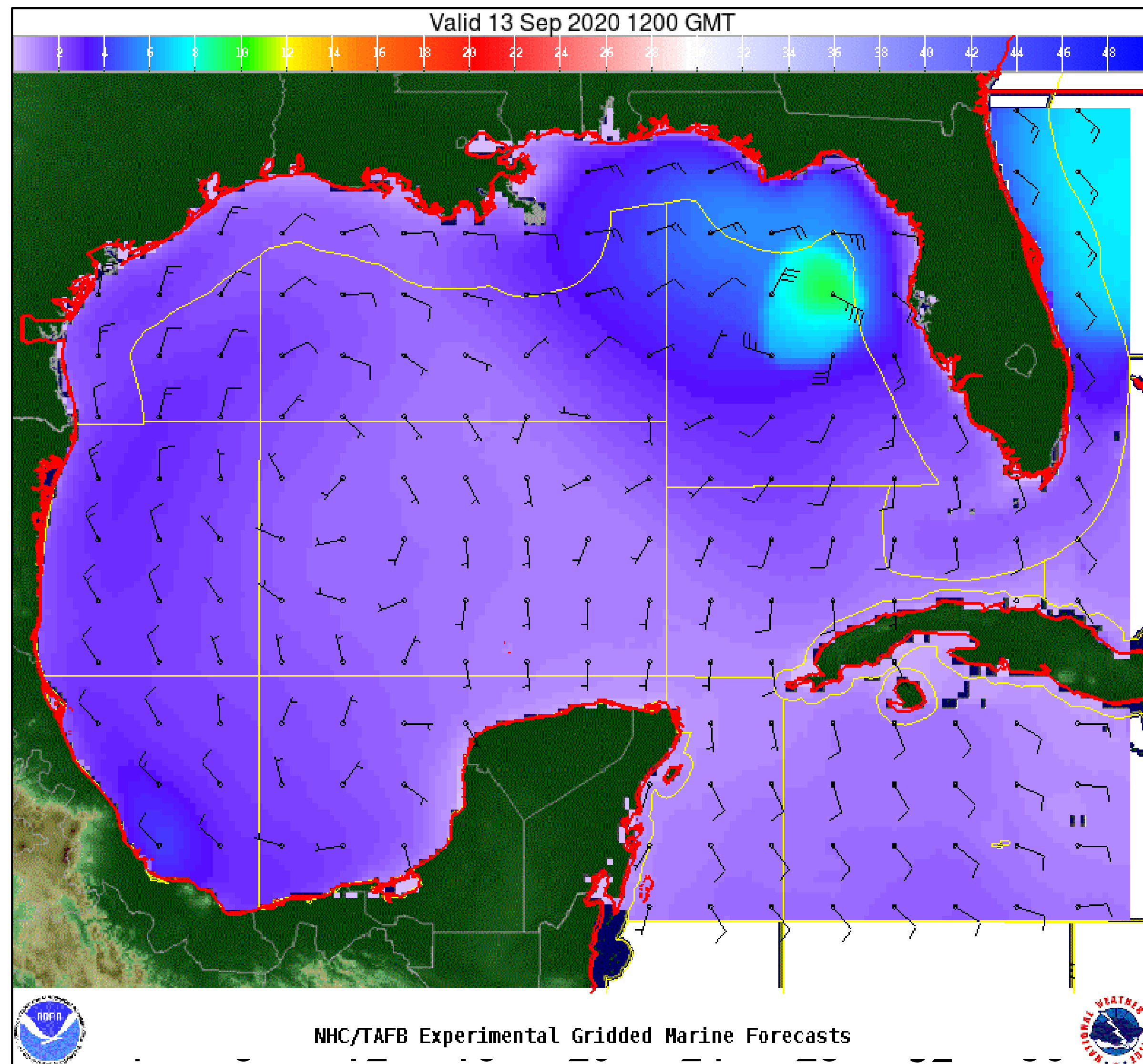


# Wind And Waves

## Tropical Depression Nineteen



Tropical Analysis and Forecast Branch  
NWS National Hurricane Center



## 24 Hour Forecast

7am CDT, Sunday, September 13<sup>th</sup>, 2020

Peak Winds: 15 kt (in D8 SRR)

Peak Seas: 6 ft (in D8 SRR)

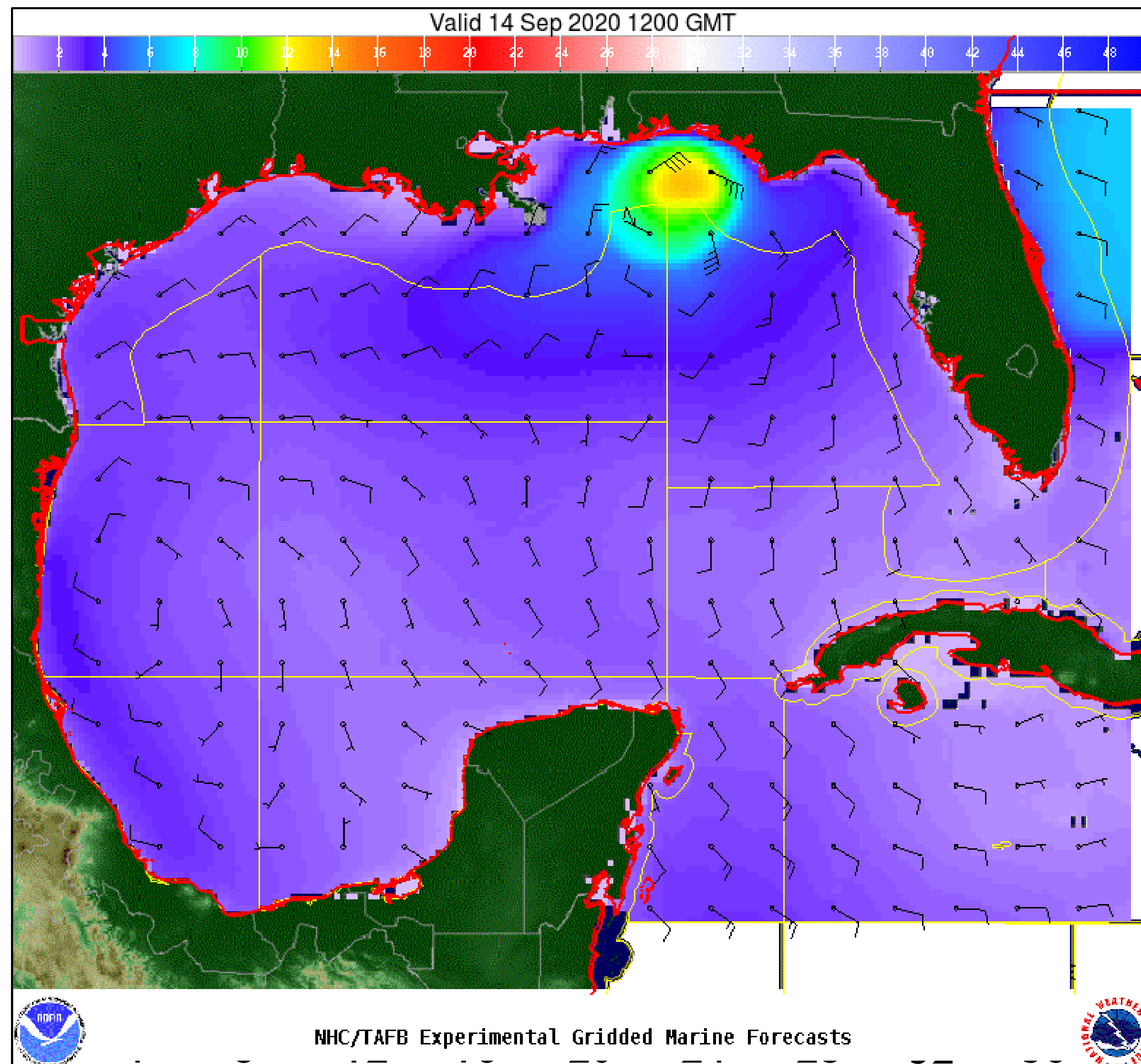


# Wind And Waves

## Tropical Depression Nineteen



Tropical Analysis and Forecast Branch  
NWS National Hurricane Center



### 48 Hour Forecast

7am CDT, Monday, September 14<sup>th</sup>, 2020

Peak Winds: 60 kt

Peak Seas: 15 ft

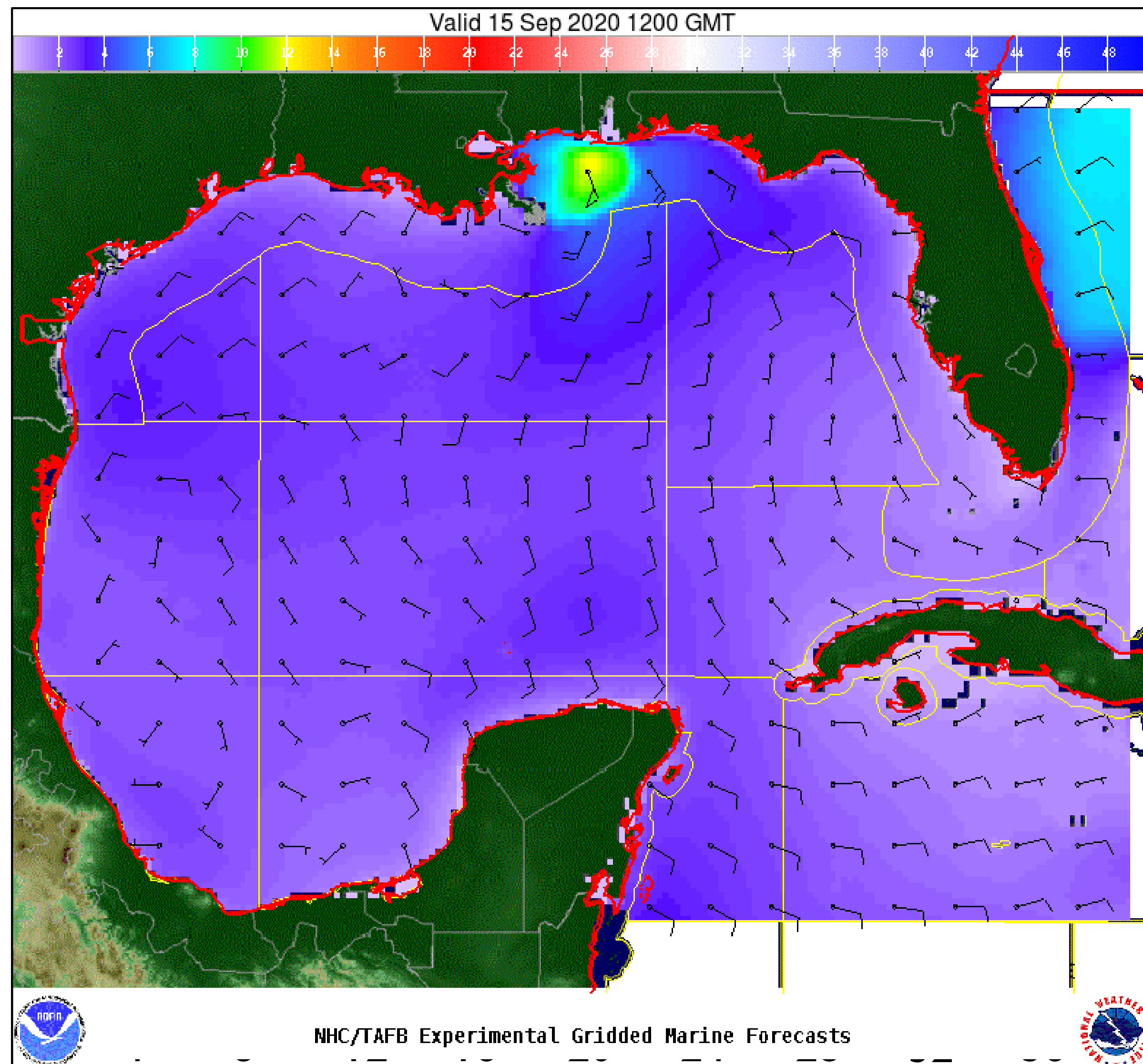


# Wind And Waves

## Tropical Depression Nineteen



Tropical Analysis and Forecast Branch  
NWS National Hurricane Center



## 72 Hour Forecast

7am CDT, Tuesday, September 15<sup>th</sup>, 2020

Peak Winds: 70 kt

Peak Seas: 15 ft

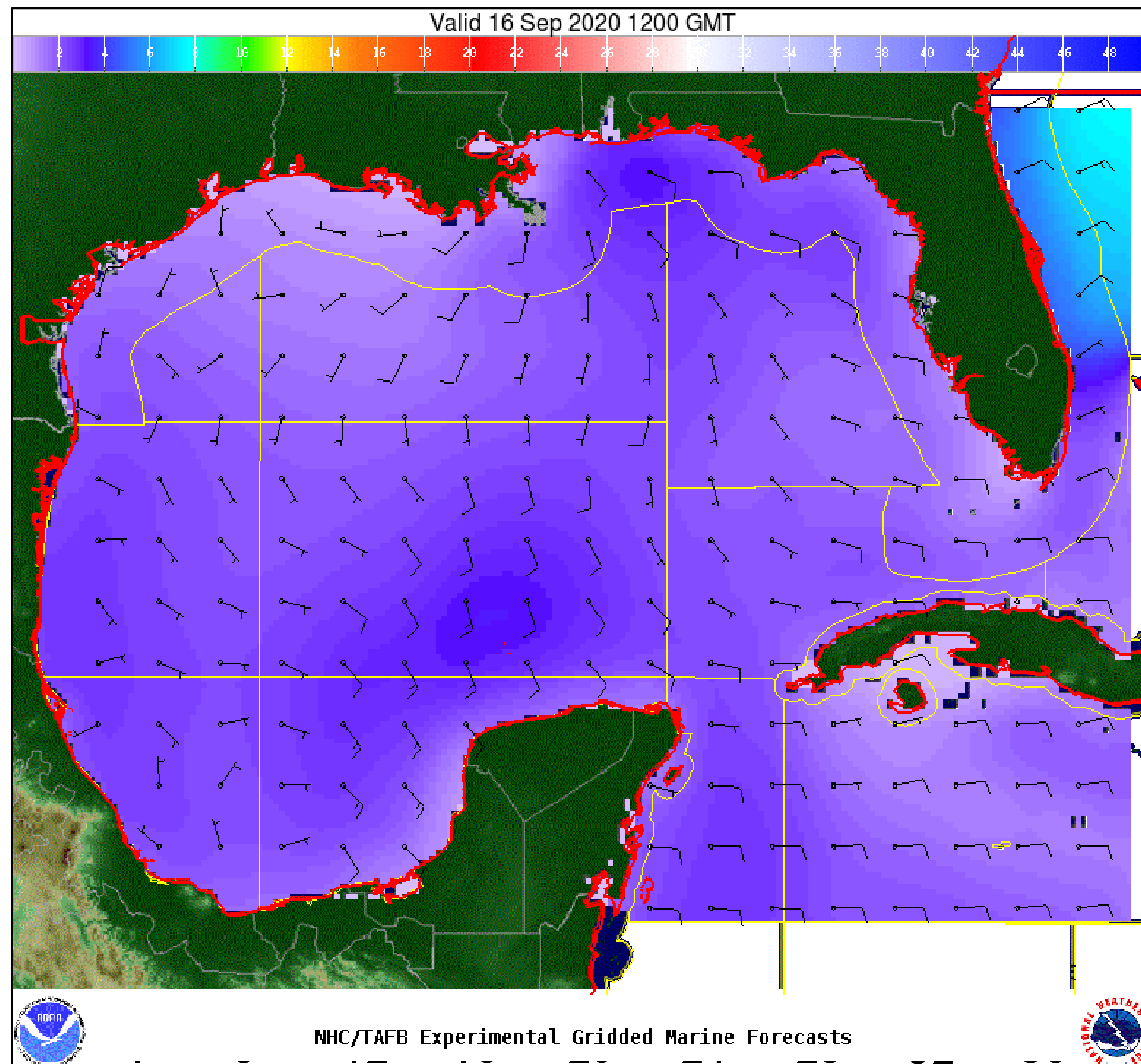


# Wind And Waves

## Tropical Depression Nineteen



Tropical Analysis and Forecast Branch  
NWS National Hurricane Center



### 96 Hour Forecast

7am CDT, Wednesday, September 16<sup>th</sup>, 2020

Peak Winds: 10 kft

Peak Seas: 4 ft

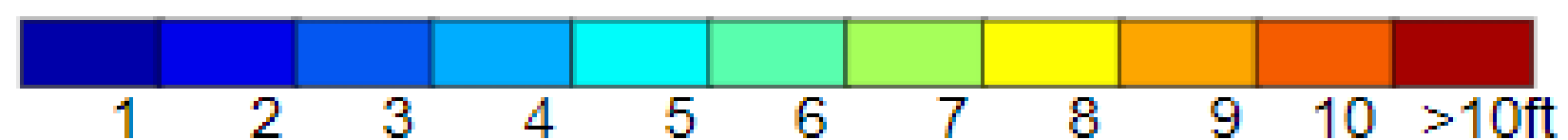
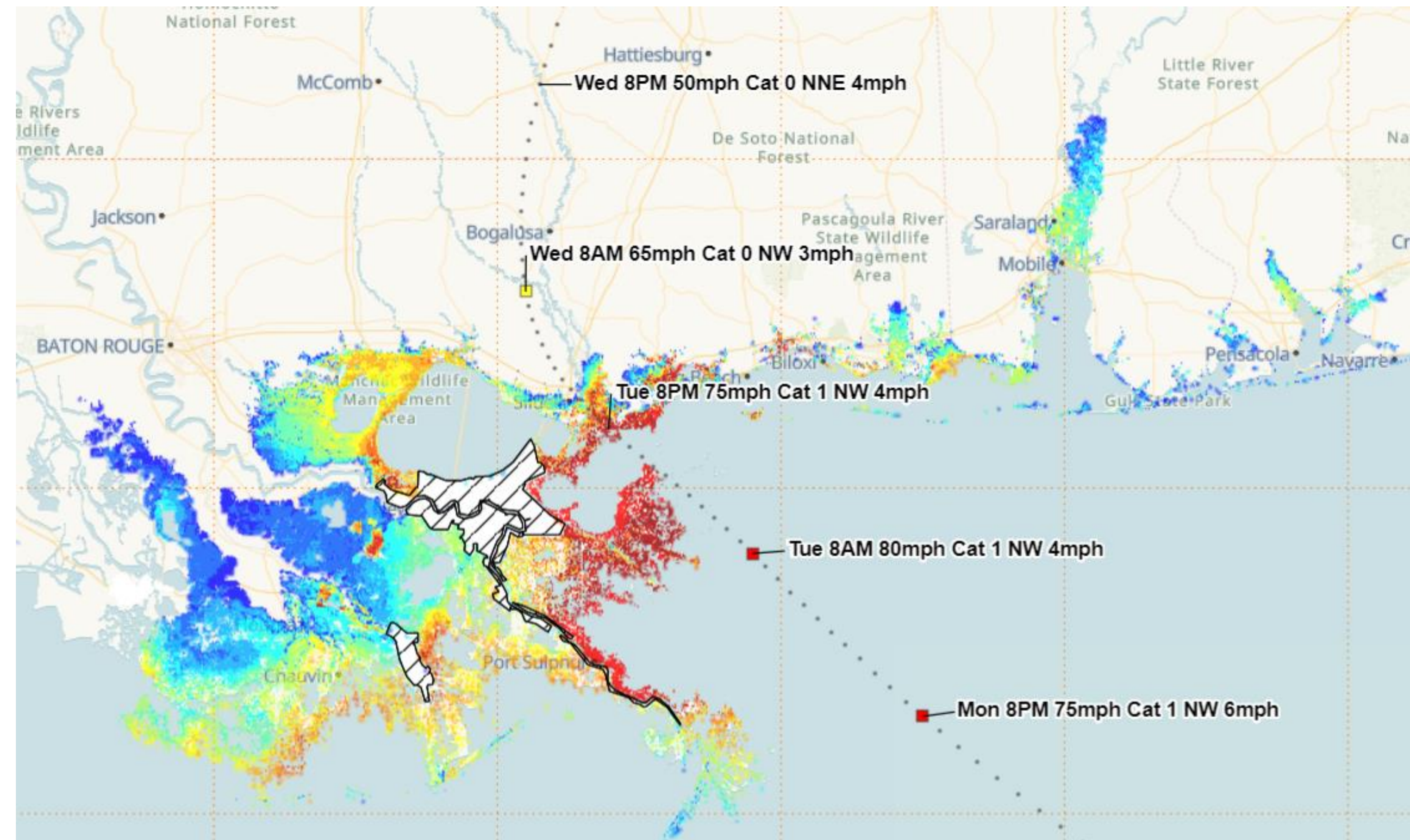


# Potential Storm Surge

Tropical Depression Nineteen



Tropical Analysis and Forecast Branch  
NWS National Hurricane Center



Leveed Area (consult local officials for flood risk)

- **Reasonable Worst Case at any individual location – Inundation Height of water above the ground)**

- From Hurrevac-HVX using Category I MEOW for New Orleans basin with WNW/NW/NNW tracks at 5 kt

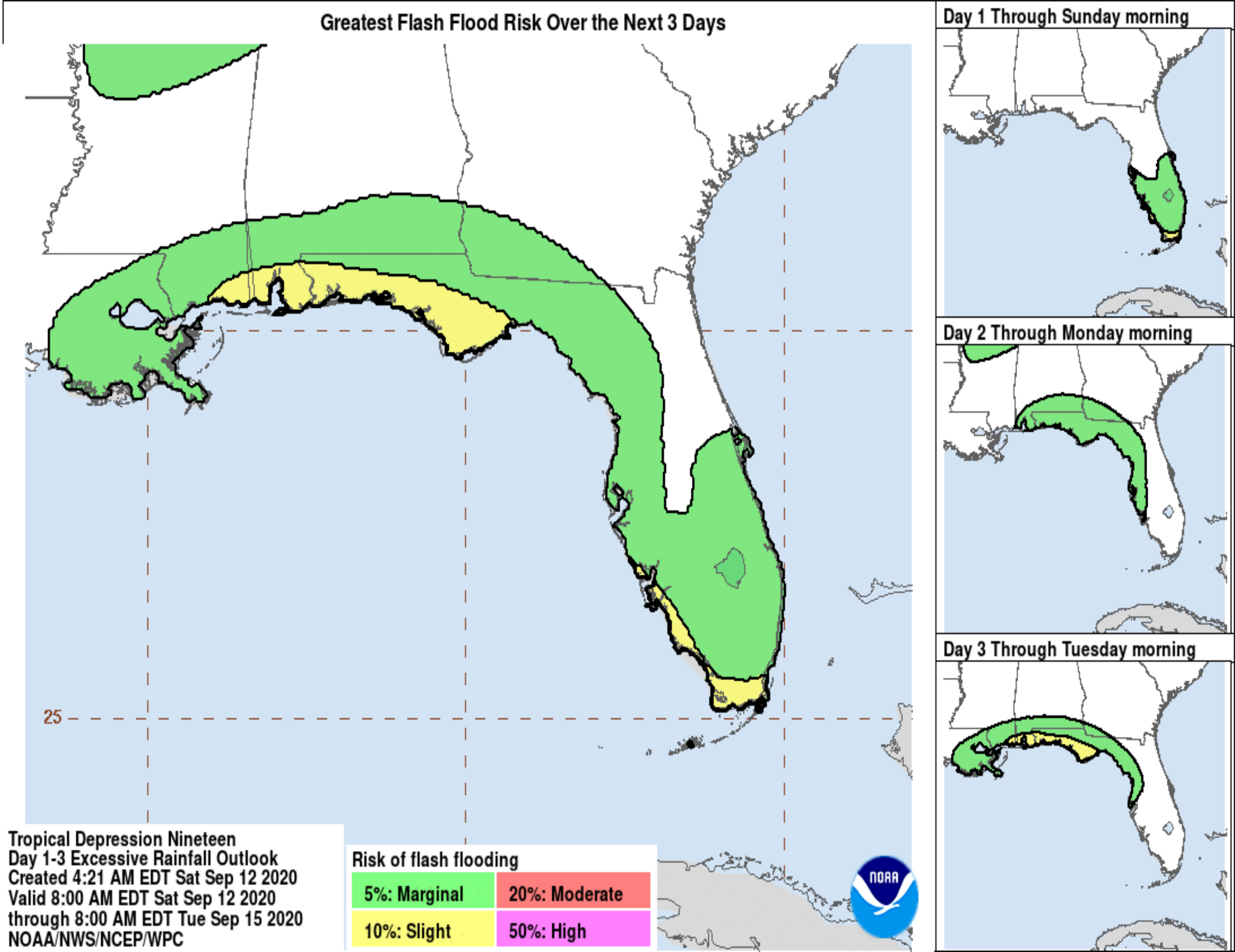
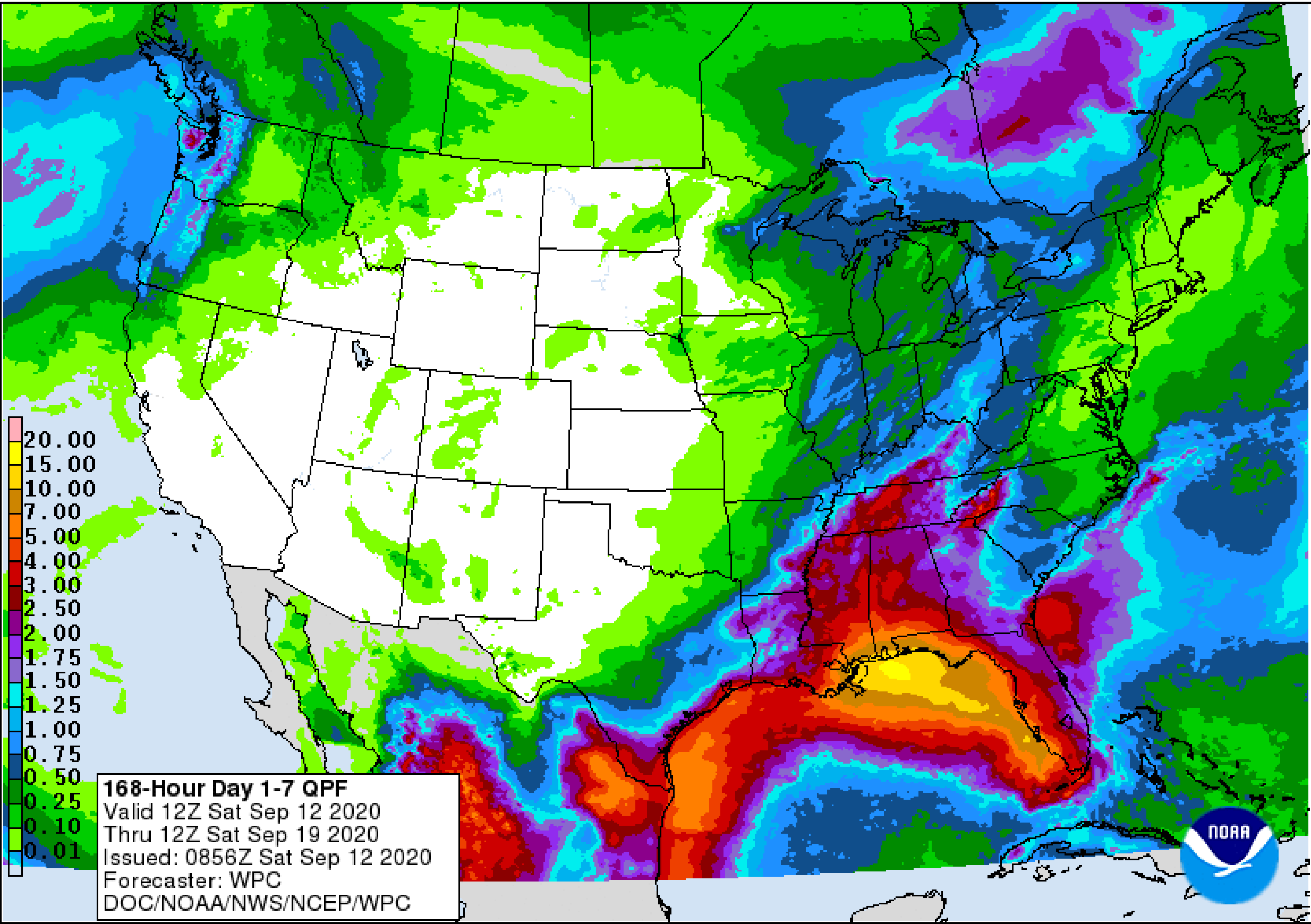


# Expected Storm Total Rainfall and Chance of Rainfall Flooding

Tropical Depression Nineteen



Tropical Analysis and Forecast Branch  
NWS National Hurricane Center



- Total rainfall in inches through Saturday morning.

Valid through Tuesday morning



# Tropical Depression Nineteen



Tropical Analysis and Forecast Branch  
NWS National Hurricane Center



## Key Messages for Tropical Depression Nineteen

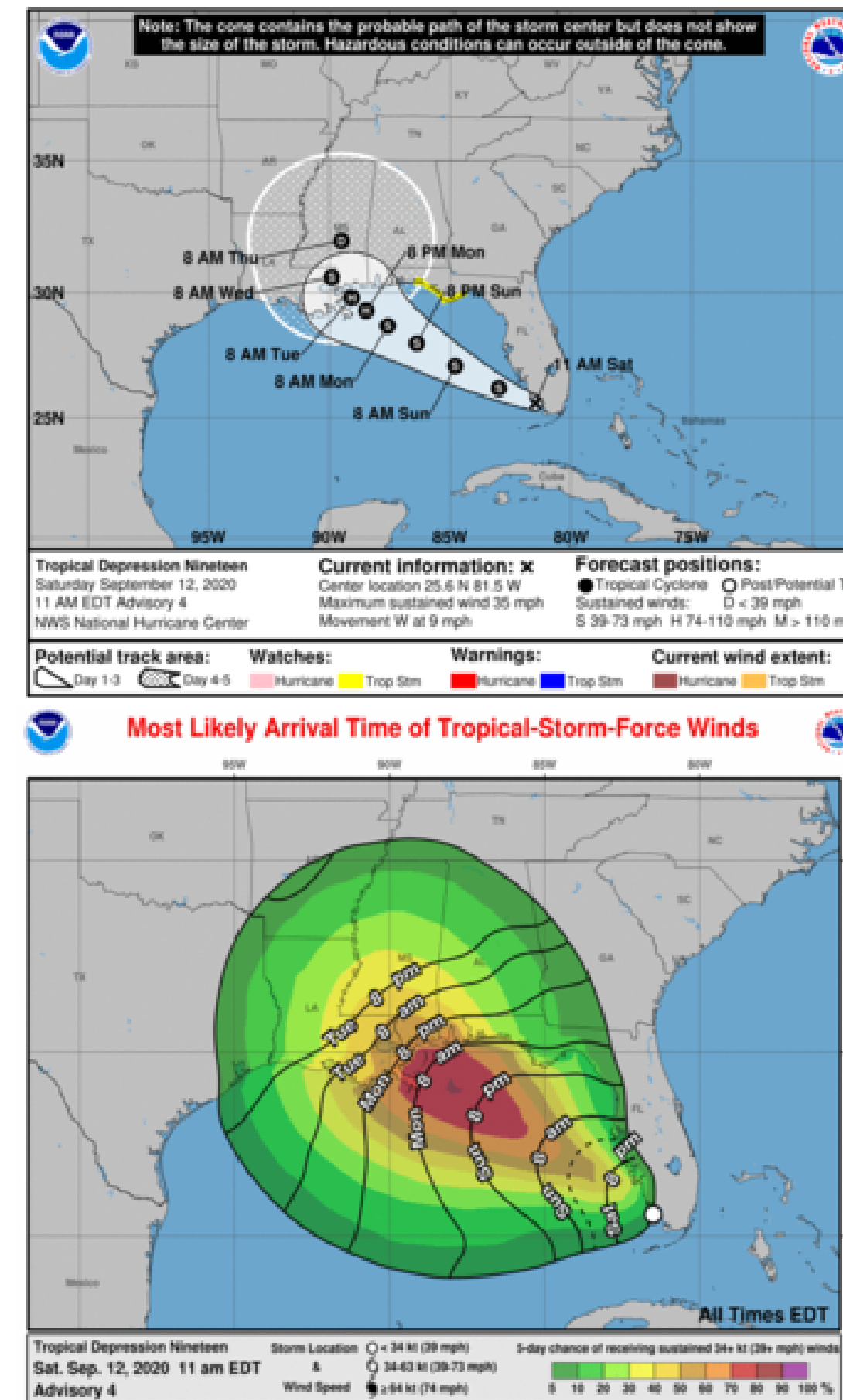
**Advisory 4: 11:00 AM EDT Sat Sep 12, 2020**



1. The depression is forecast to strengthen to a hurricane early next week as it moves across the northeastern Gulf of Mexico, and there is an increasing risk of life-threatening storm surge and dangerous hurricane-force winds from southeastern Louisiana to the Alabama coast. Residents in these areas should closely monitor the progress of this system and updates to the forecast, as Storm Surge and Hurricane watches will likely be issued later today.

2. The depression is expected to produce flash flooding across portions of southern Florida and prolong existing minor river flooding across central Florida through Sunday. Flash, urban, and minor to isolated moderate river flooding is likely across portions of the central Gulf Coast Sunday through Tuesday.

3. Tropical storm conditions are possible by Sunday night in portions of the Florida Panhandle, where a Tropical Storm Watch is in effect. Wind gusts to tropical-storm force could occur over portions of the southern Florida Peninsula today.



**For more information go to [hurricanes.gov](http://hurricanes.gov)**

- **Marine Key Messages:**
- Seas building to 15 ft on Monday and Tuesday in D8 SRR
- Seas subsiding by Wednesday



# TROPICAL DEPRESSION NINETEEN BRIEFING

You can contact the Tropical Analysis and Forecast Branch at  
305-229-4424

*The Next Briefing Will Be:  
Sunday 1:00 AM CDT*

*You can always find get the latest graphics and information for this storm at [www.hurricanes.gov](http://www.hurricanes.gov)*



NHC\_TAFB

[www.nhc.noaa.gov](http://www.nhc.noaa.gov)