

IMPACTS FOR D8 (through 5 days)

Winds – High

Storm Surge – High

Rainfall/Flash Flooding – High

Tornadoes – Low to Moderate

Waves – High

Tropical Storm Laura & TD 14 Briefing



9:00 AM CDT
Friday, August 21st, 2020

Prepared by:
Jeff Lewitsky

*Tropical Analysis and Forecast Branch
NWS National Hurricane Center*

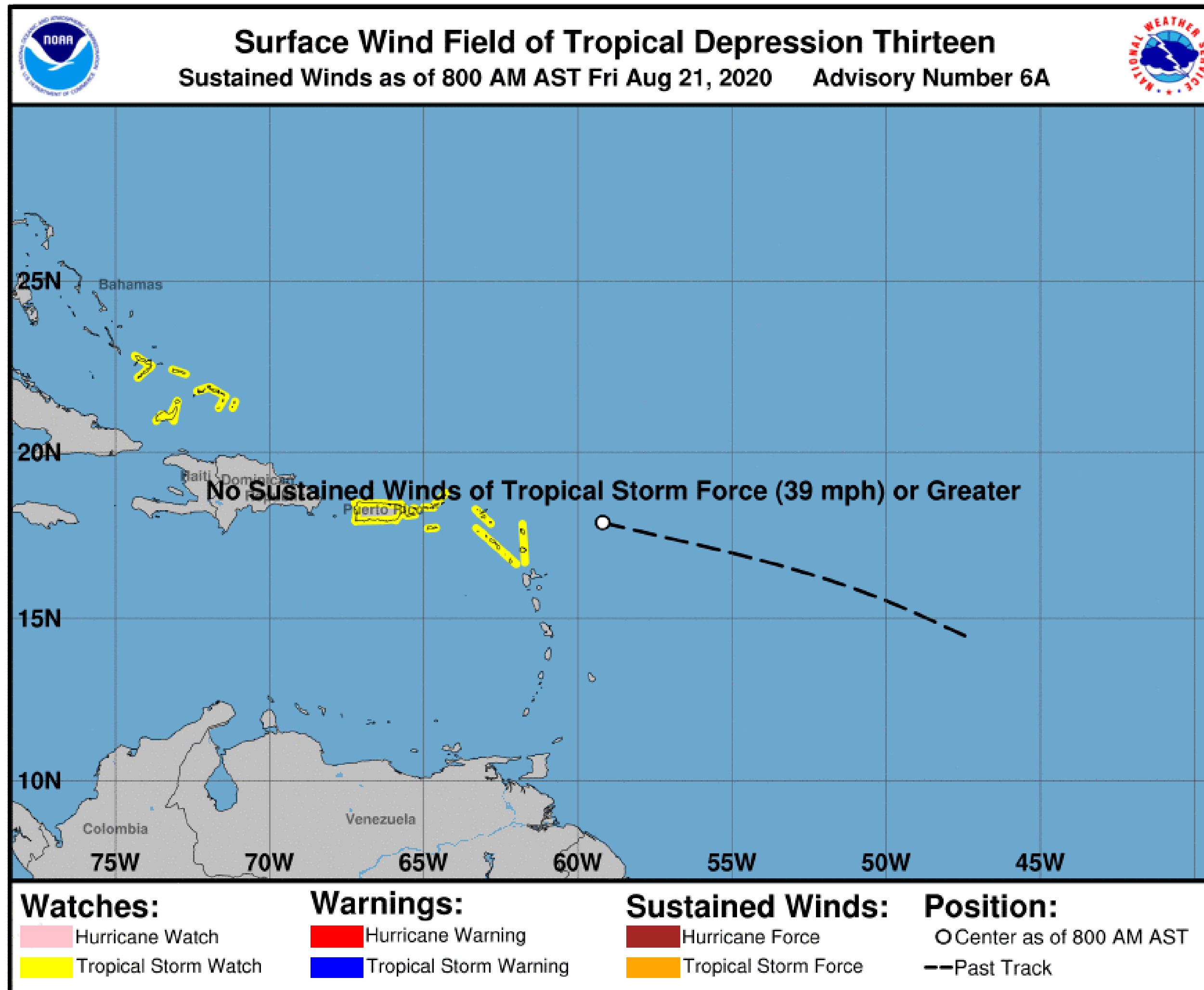


Situation Overview

Tropical Storm Laura



Tropical Analysis and Forecast Branch
NWS National Hurricane Center



...NOAA HURRICANE HUNTER AIRCRAFT
FINDS THAT TD13 HAS STRENGTHENED TO
TROPICAL STORM LAURA...

Summary of 805 AM CDT...

LOCATION...17.0N 59.8W
ABOUT 230 MI ESE OF THE NORTHERN
LEEWARD ISLANDS

MAXIMUM SUSTAINED WINDS...45 MPH

PRESENT MOVEMENT...W OR 280 DEGREES
AT 21 MPH

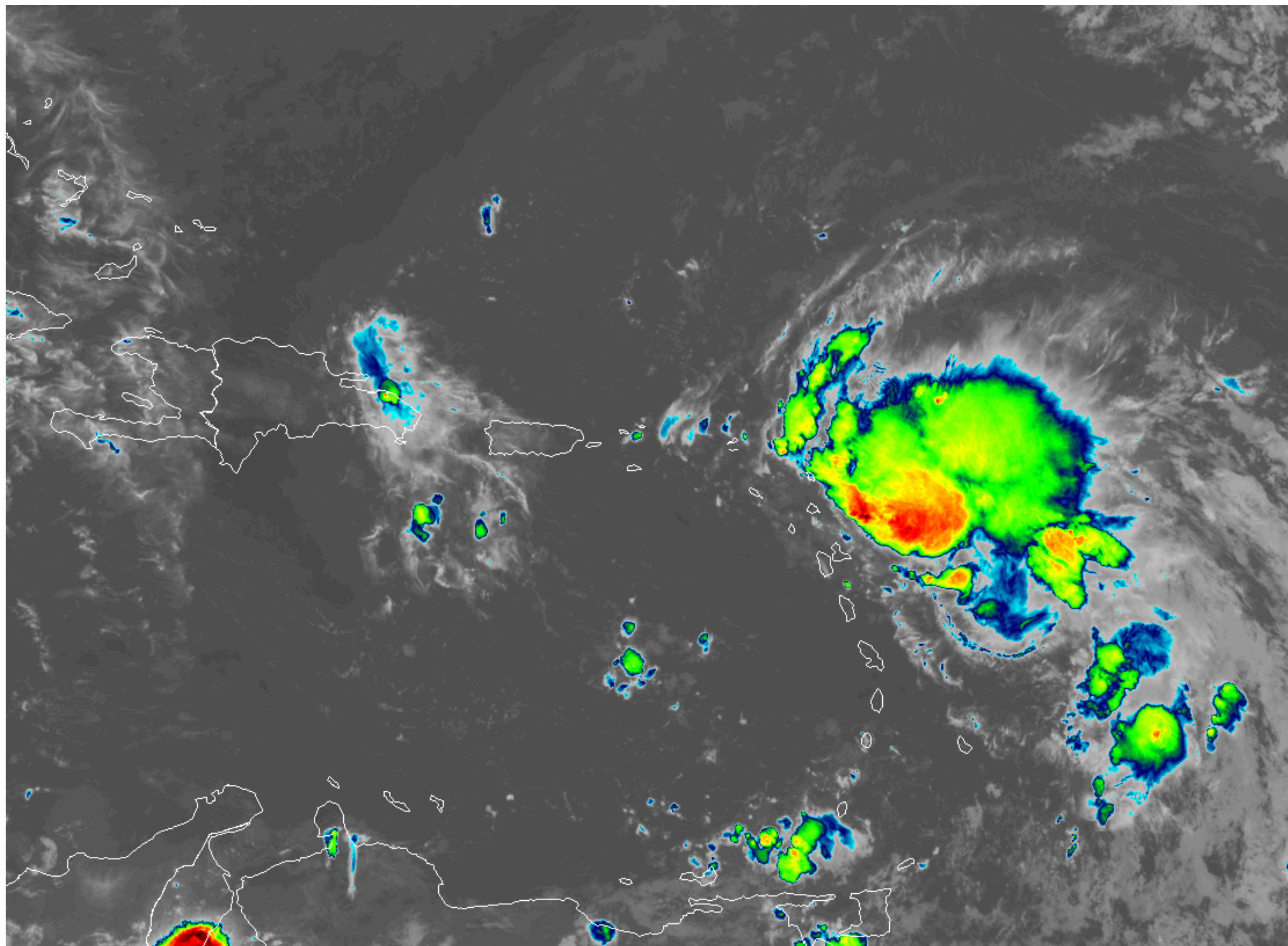
PEAK SEAS...12 FT

Current Satellite View

Tropical Storm Laura



Tropical Analysis and Forecast Branch
NWS National Hurricane Center



8/21/2020 10:18 AM

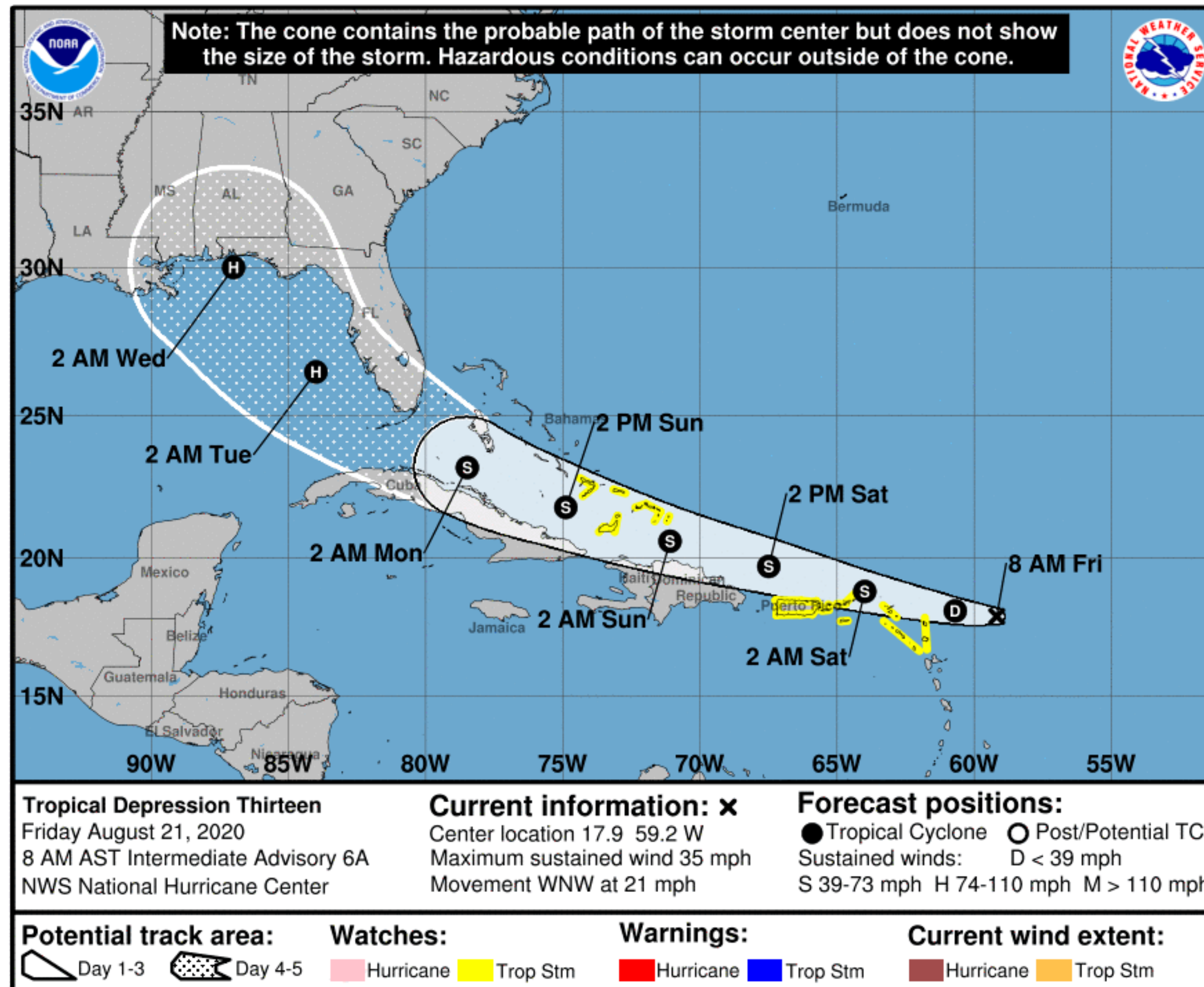
www.nhc.noaa.gov

Forecast Information

Tropical Storm Laura



Tropical Analysis and Forecast Branch
NWS National Hurricane Center



- Near the Florida Peninsula by early next week.
- Near Hurricane strength by early next week.
- Near the N central or NE Gulf of Mexico Days 4-5

** Swaths are calculated using average track errors and actual track may be well inside, or possibly outside the potential track areas indicated.

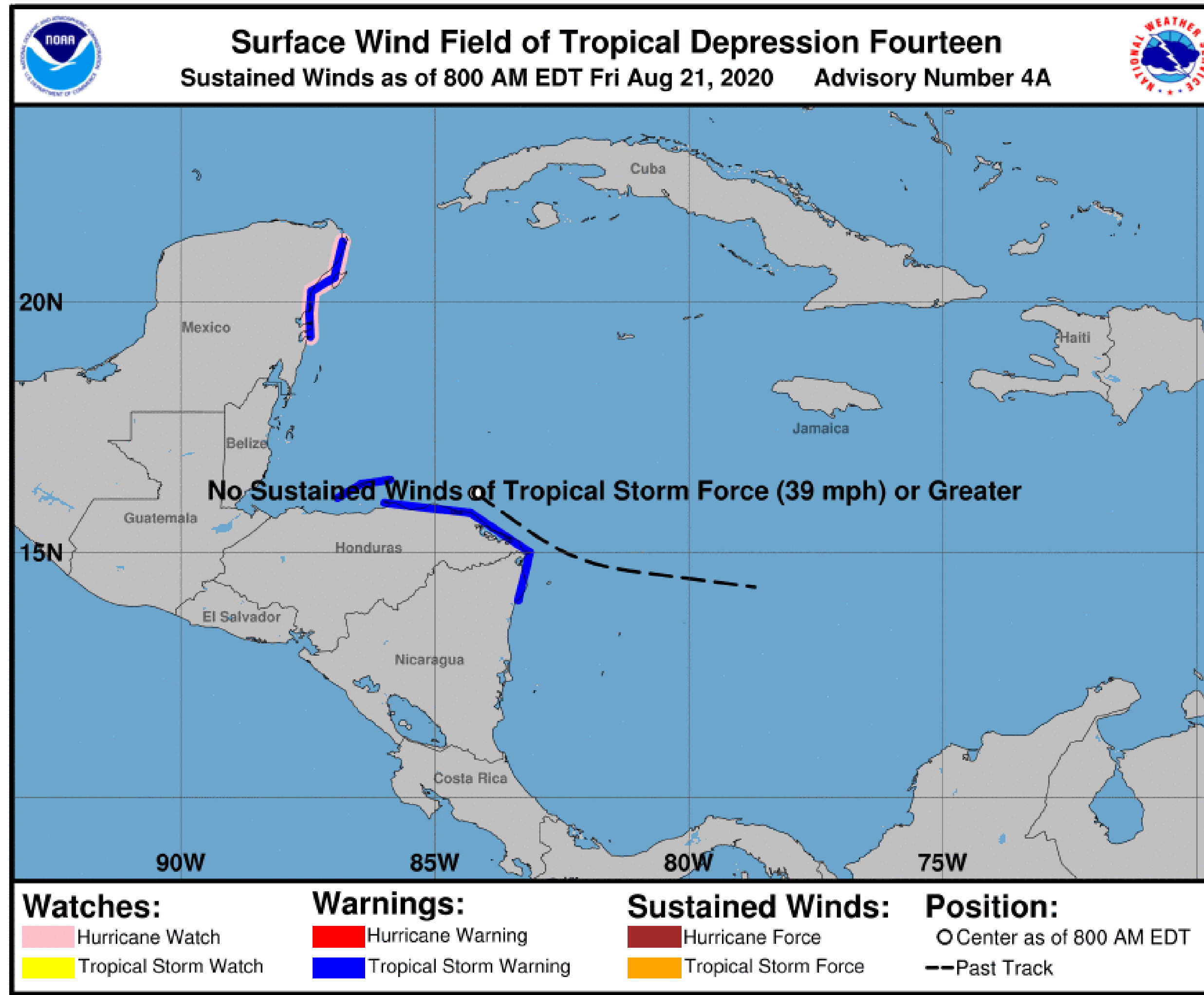
NOTE: Do not focus on the exact track. Impacts can occur well outside the area enclosed by the cone.

Situation Overview

Tropical Depression 14



Tropical Analysis and Forecast Branch
NWS National Hurricane Center



...AIR FORCE RESERVE HURRICANE HUNTER
AIRCRAFT FINDS THE CENTER OF
TD 14 JUST OFF THE NORTHEASTERN
COAST OF HONDURAS...

Summary of 700 AM CDT...

LOCATION...16.2N 84.2W
ABOUT 160 MI...255 KM E OF ISLA ROATAN
HONDURAS

MAXIMUM SUSTAINED WINDS...35 MPH

PRESENT MOVEMENT...WNW OR 300
DEGREES AT 12 MPH

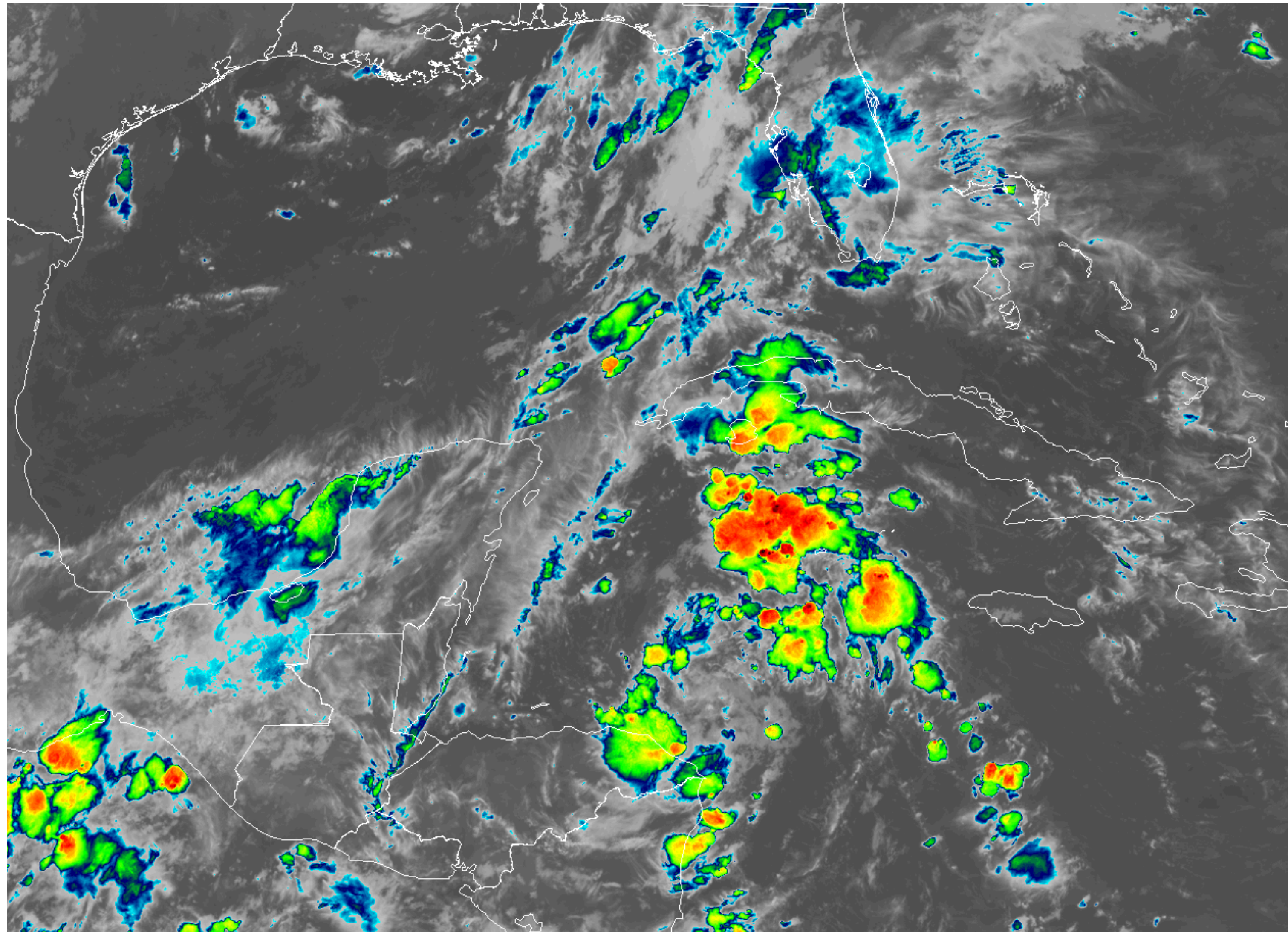
PEAK SEAS...10 FT

Current Satellite View

Tropical Depression 14



Tropical Analysis and Forecast Branch
NWS National Hurricane Center



8/21/2020 10:18 AM

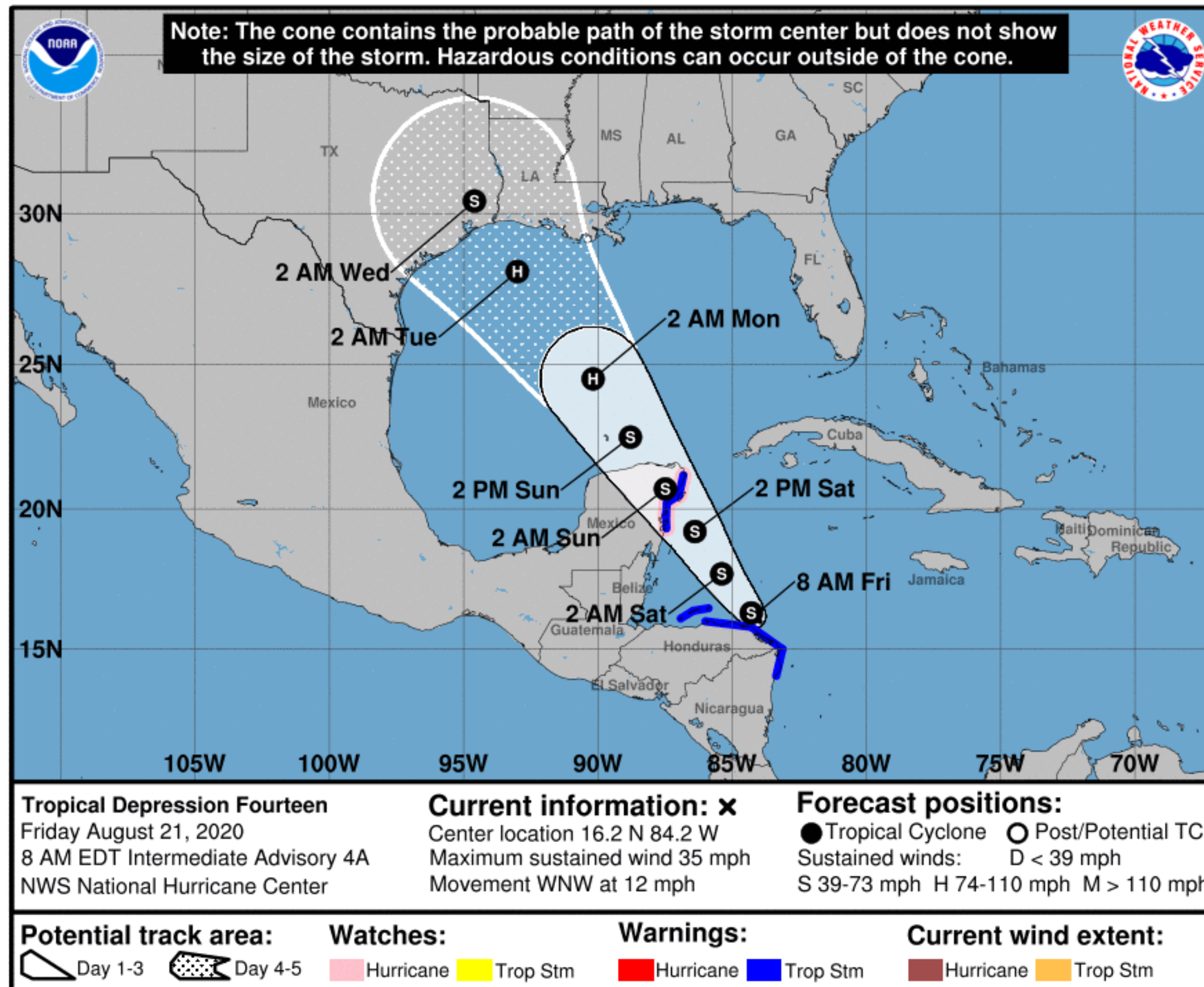
www.nhc.noaa.gov

Forecast Information

Tropical Depression 14



Tropical Analysis and Forecast Branch
NWS National Hurricane Center



- Near the S Central Gulf of Mexico Sunday.
- Near the NW or N Central Gulf of Mexico Days 4-5.
- Near Hurricane strength by early next week.

** Swaths are calculated using average track errors and actual track may be well inside, or possibly outside the potential track areas indicated.

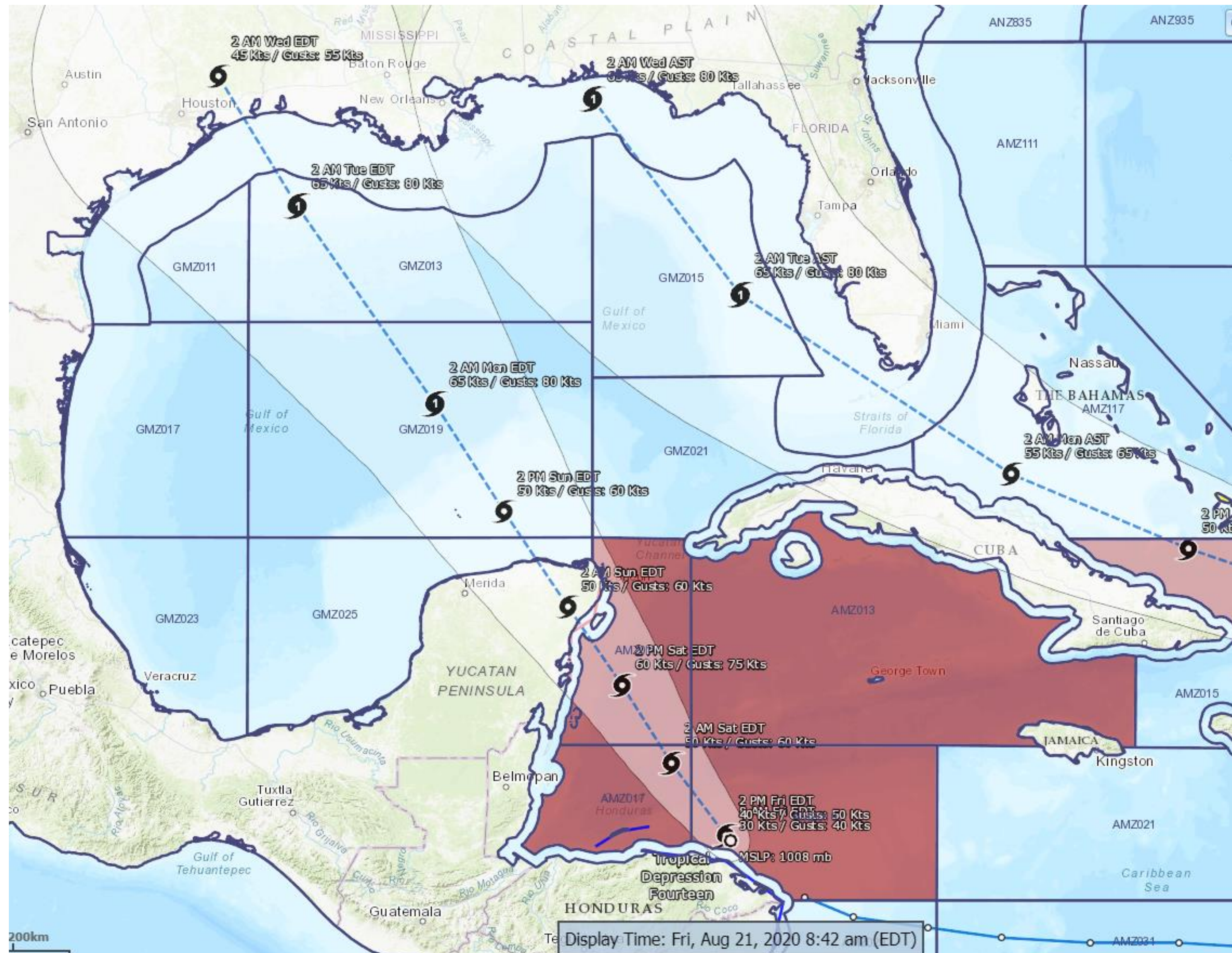
NOTE: Do not focus on the exact track. Impacts can occur well outside the area enclosed by the cone.

Hazards Map

Tropical Storm Laura & TD14



Tropical Analysis and Forecast Branch
NWS National Hurricane Center



 Tropical Storm Warning

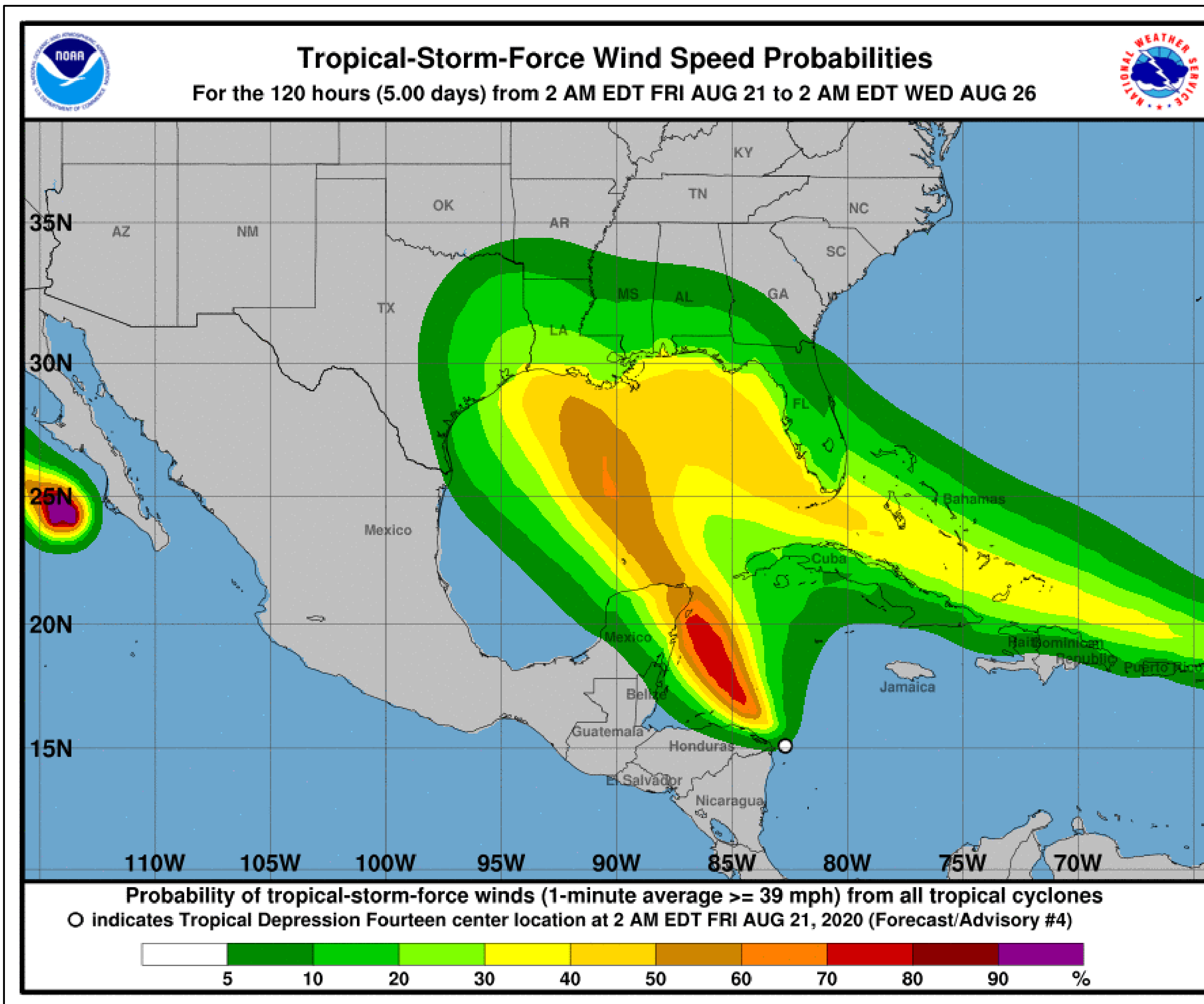
- <https://nowcoast.noaa.gov/>

T.S. Wind Speed Probabilities

Tropical Storm Laura & TD14



Tropical Analysis and Forecast Branch
NWS National Hurricane Center



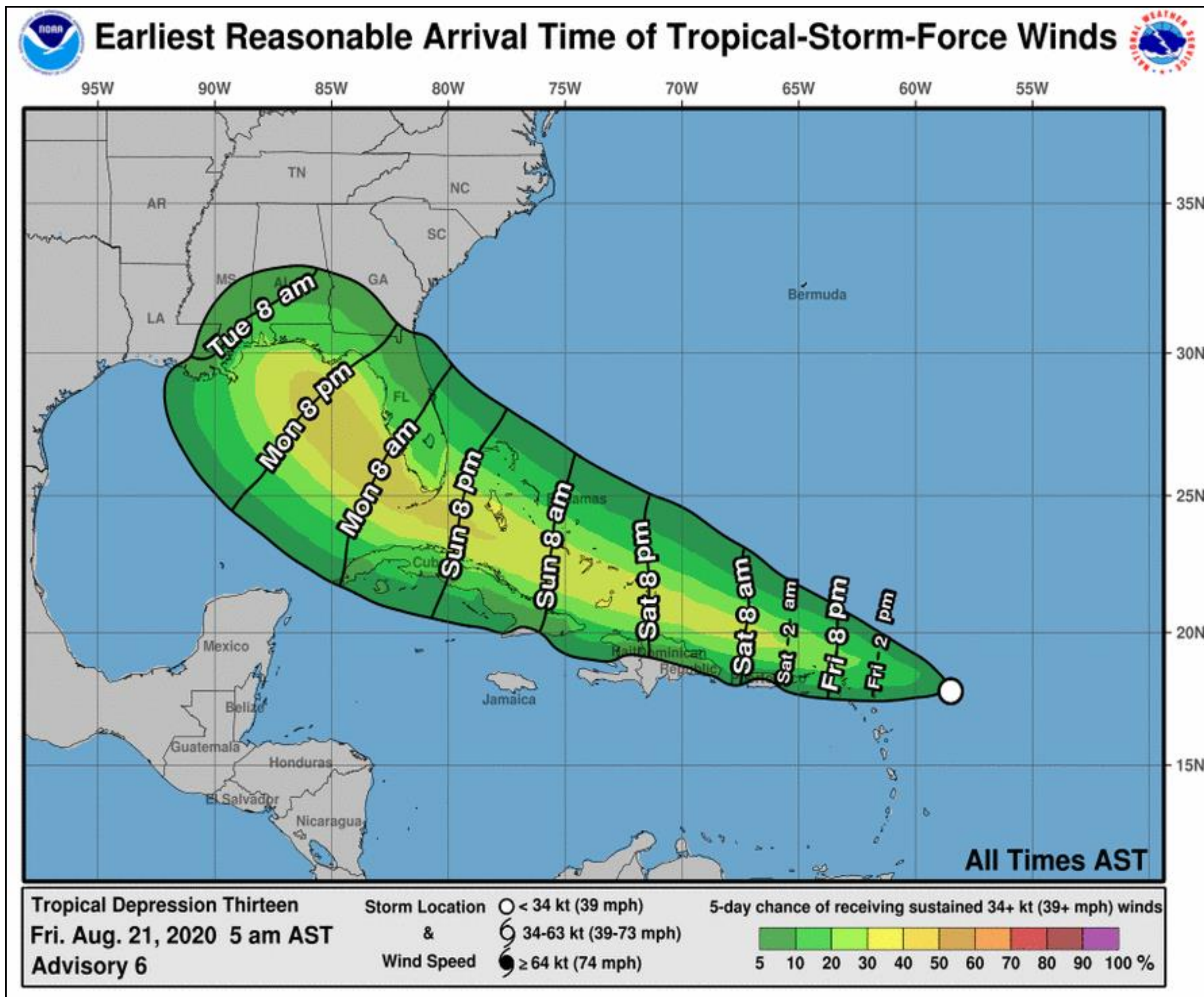
- **Mobile: 25-30% Chance**
- **New Orleans: 20-25% Chance**
- **Beaumont: 30-35% Chance**
- **Galveston: 25-30% Chance**
- **Corpus Christi: 10% Chance**
- Probabilities of sustained tropical storm force winds (34 kt to 63 kt) over the next 5 days, based off this cyclone's wind radii and track.
- See the color bar below the image for more details.
- **Hurricane 0-5% all locations**

Earliest Reasonable Time of Arrival

Tropical Storm Laura



Tropical Analysis and Forecast Branch
NWS National Hurricane Center



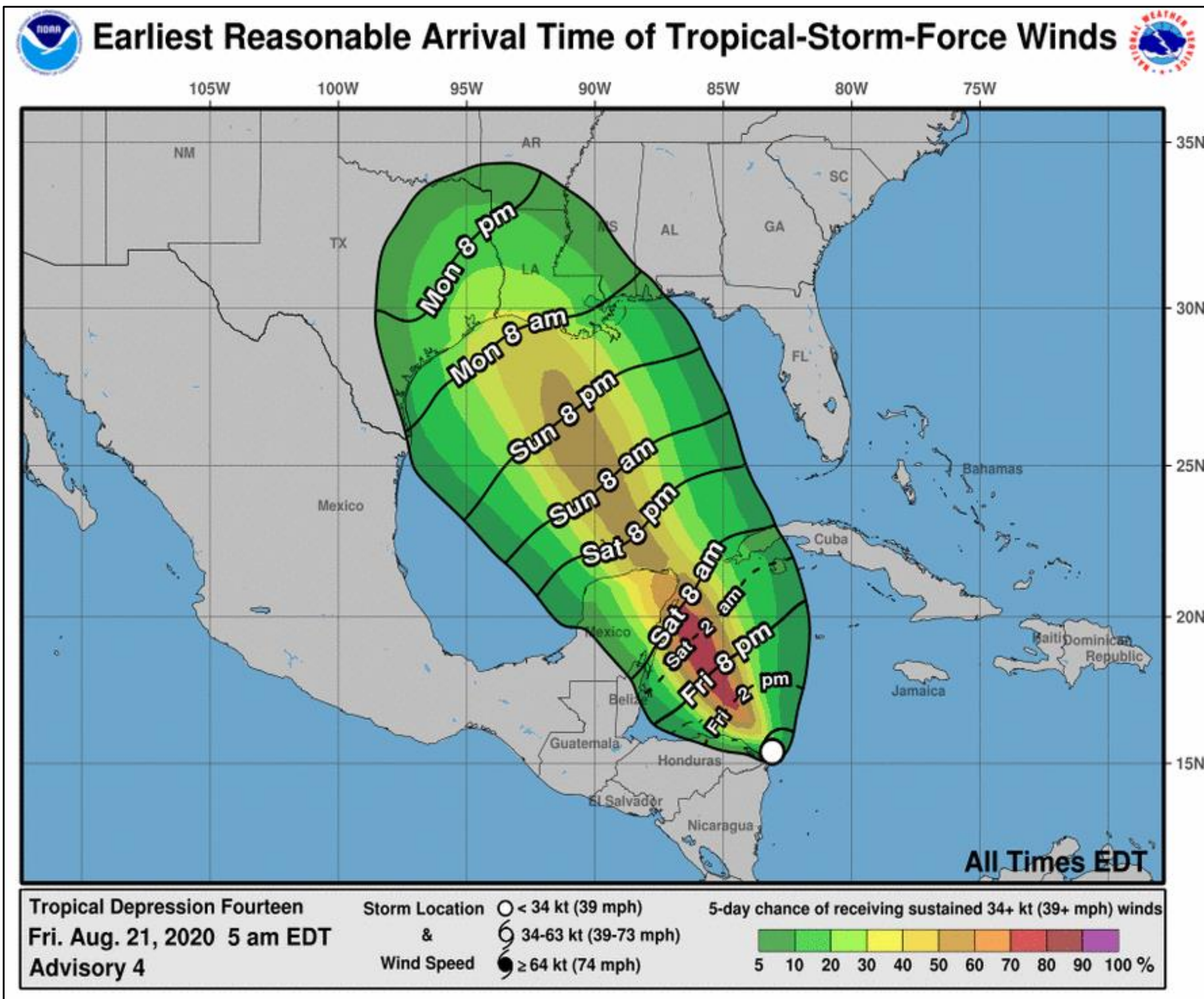
- Mobile: Tuesday 1 am CDT
- New Orleans: Tuesday 7 am CDT
- The earliest reasonable time of arrival of Tropical Storm Force Winds (34kt to 63 kt) for this cyclone based off the current track and wind radii.
- See the color bar below the image for more details.

Earliest Reasonable Time of Arrival

Tropical Depression 14



Tropical Analysis and Forecast Branch
NWS National Hurricane Center



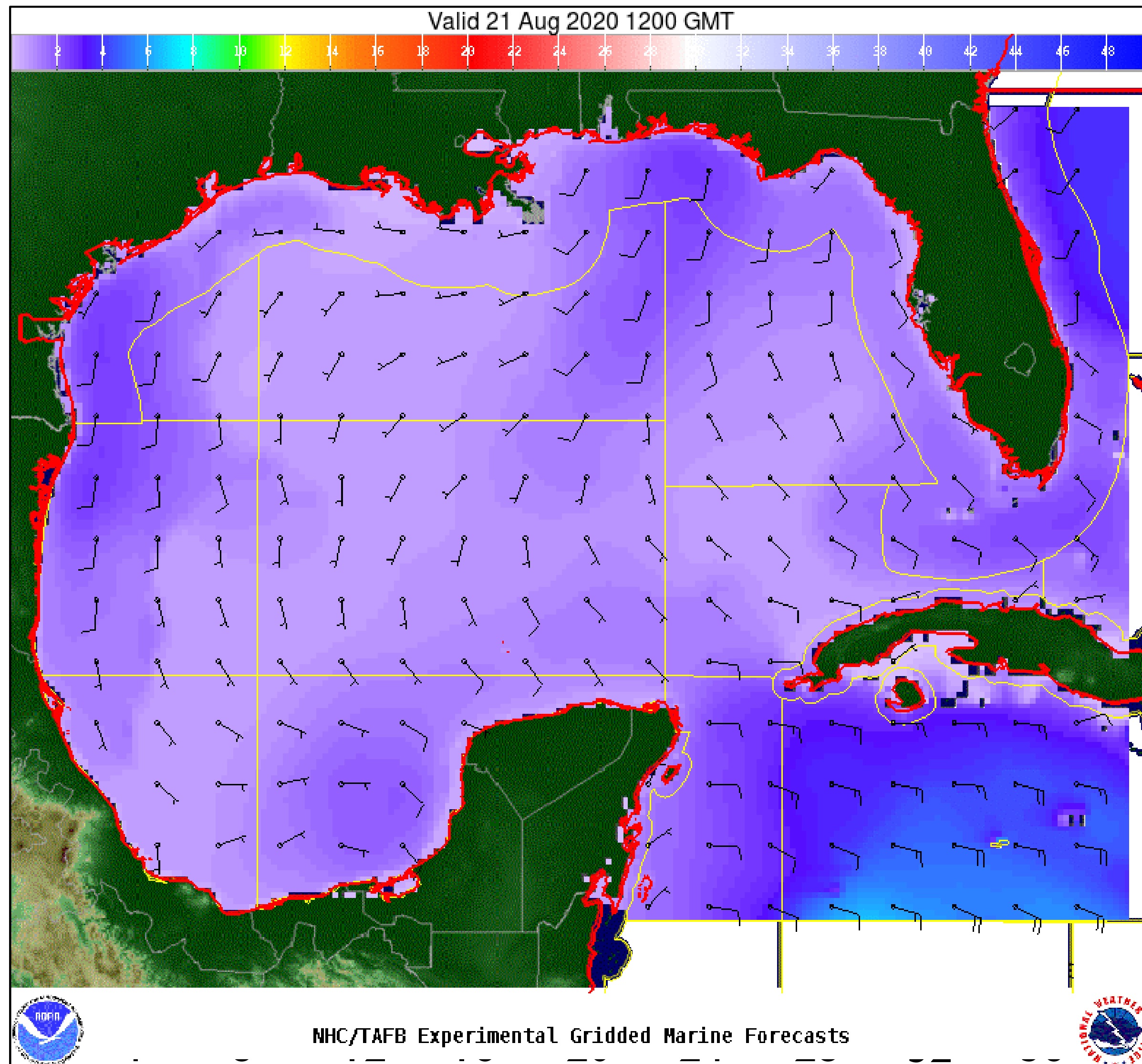
- Mobile: Monday 7am CDT
 - New Orleans: Monday 7am CDT
 - Galveston: Monday 7am CDT
 - Beaumont: Monday 7am CDT
 - Corpus Christi: Monday 7am CDT
 - Texas City: Monday 7am CDT
-
- The earliest reasonable time of arrival of Tropical Storm Force Winds (34kt to 63 kt) for this cyclone based off the current track and wind radii.
 - See the color bar below the image for more details.

Wind And Waves

Tropical Storm Laura & TDI4



Tropical Analysis and Forecast Branch
NWS National Hurricane Center



Current Conditions

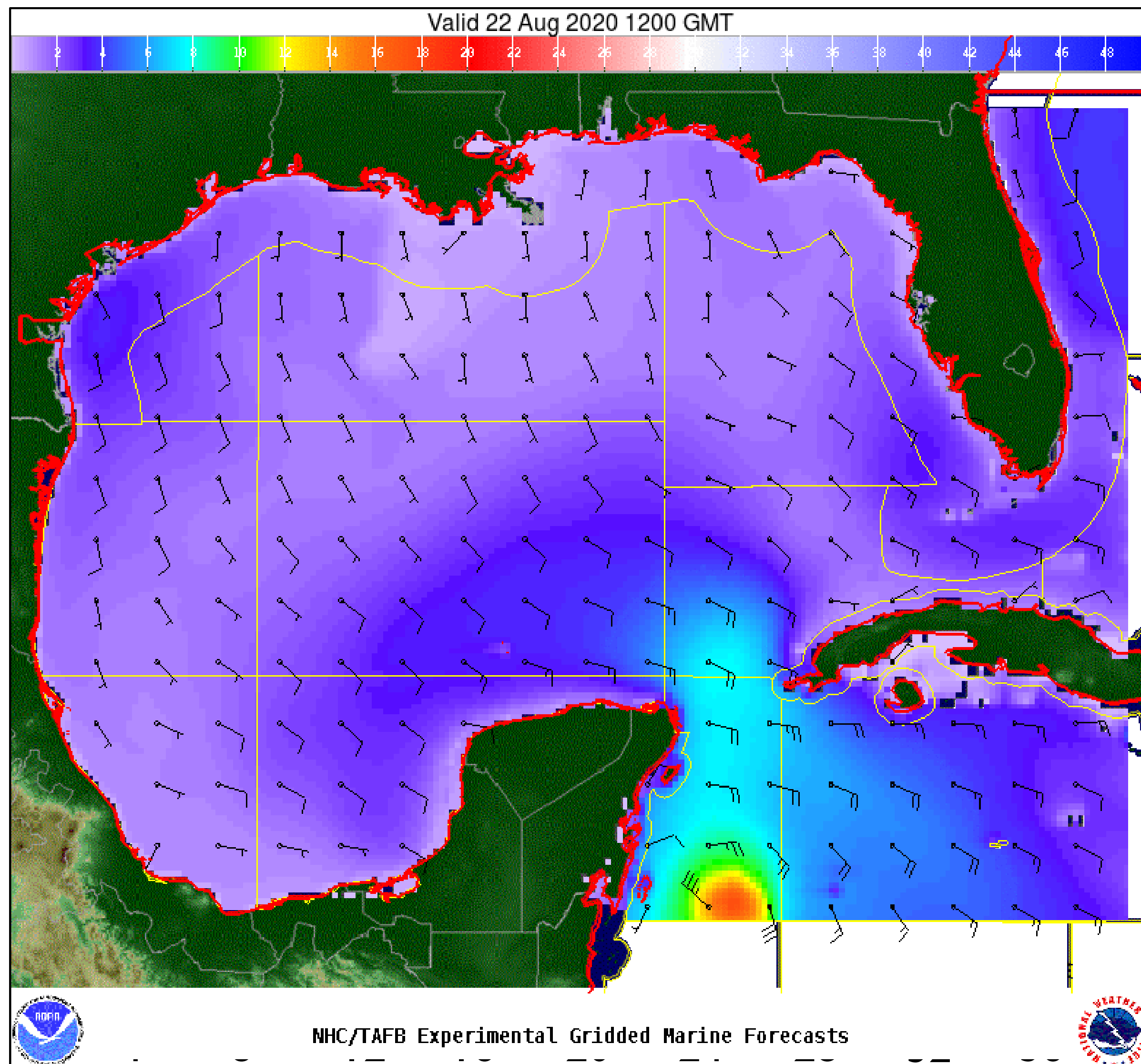
7am CDT Friday, August 21st, 2020

Wind And Waves

Tropical Storm Laura & TDI4



Tropical Analysis and Forecast Branch
NWS National Hurricane Center



24 Hour Forecast

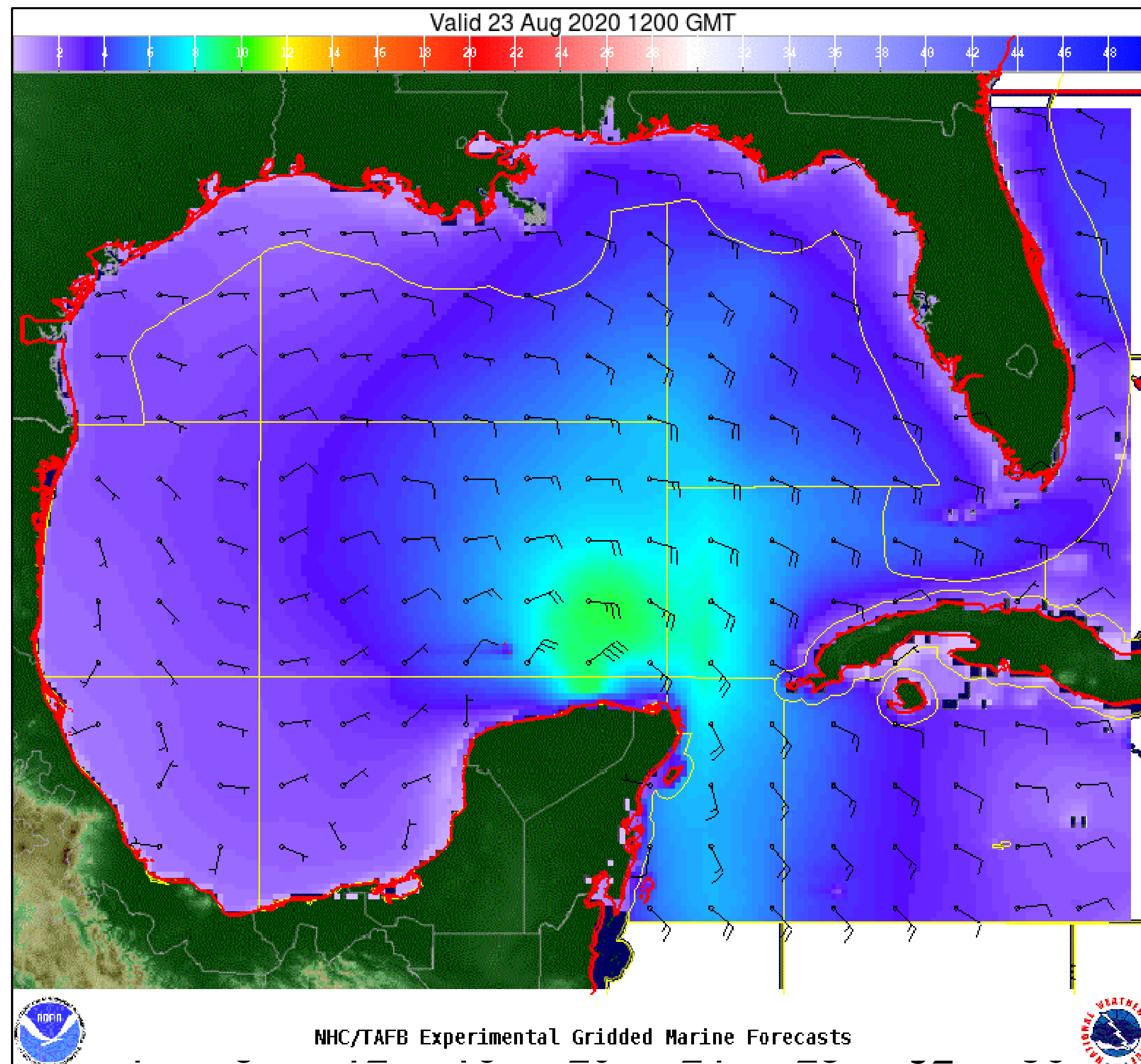
7am CDT Saturday, August 22nd, 2020

Wind And Waves

Tropical Storm Laura & TD14



Tropical Analysis and Forecast Branch
NWS National Hurricane Center



48 Hour Forecast

7am CDT Sunday, August 23rd, 2020

Laura

Peak Winds: 45 KT

Peak Seas: 18 FT

Fourteen

Peak Winds: 50 KT

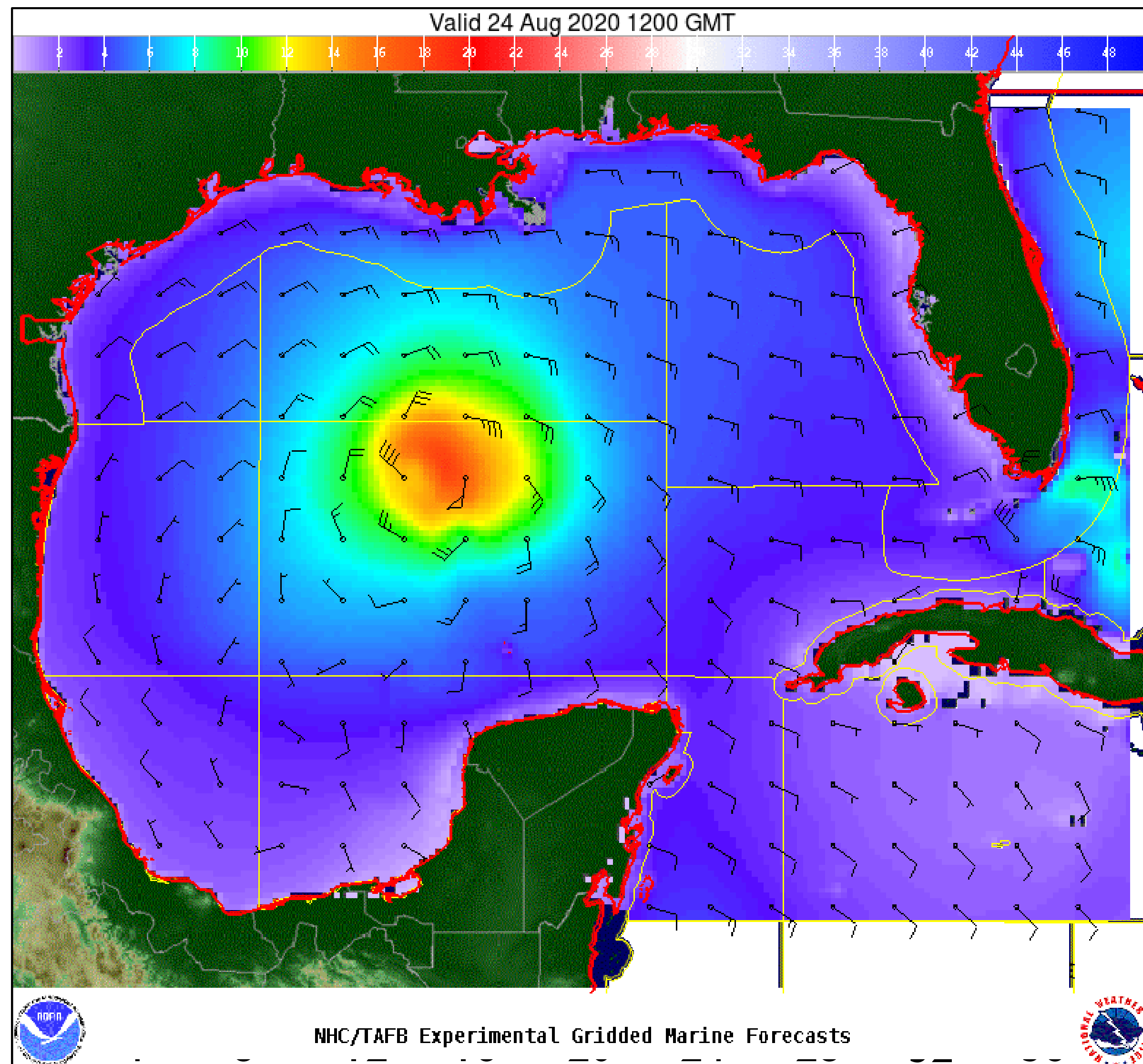
Peak Seas: 12 FT

Wind And Waves

Tropical Storm Laura & TD14



Tropical Analysis and Forecast Branch
NWS National Hurricane Center



72 Hour Forecast

7am CDT Monday, August 24th, 2020

Laura

Peak Winds: 45 KT

Peak Seas: 14 FT

Fourteen

Peak Winds: 65 KT

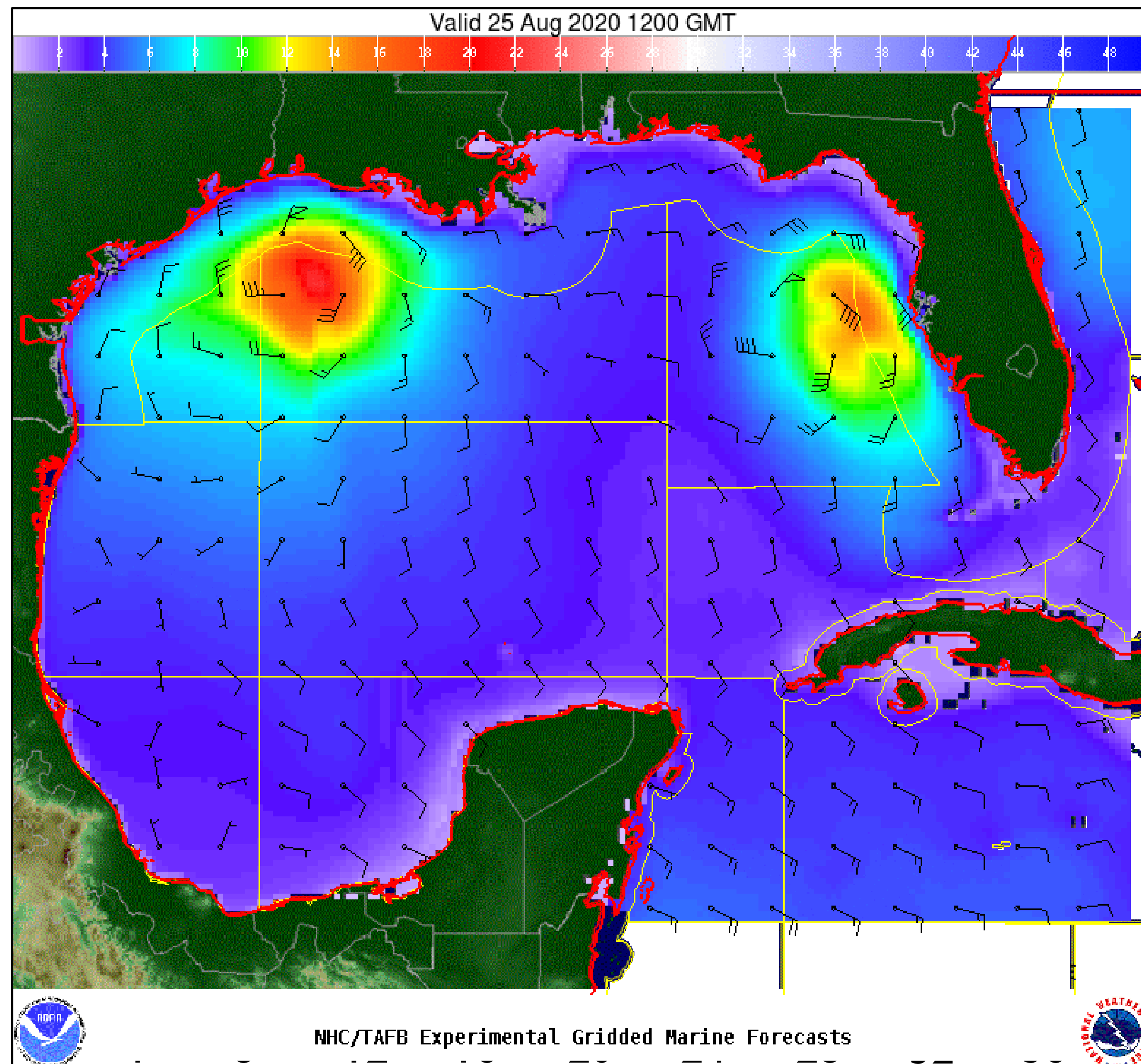
Peak Seas: 19 FT

Wind And Waves

Tropical Storm Laura & TD14



Tropical Analysis and Forecast Branch
NWS National Hurricane Center



96 Hour Forecast

7am CDT Tuesday, August 25th, 2020

Laura

Peak Winds: 65 KT

Peak Seas: 20 FT

Fourteen

Peak Winds: 65 KT

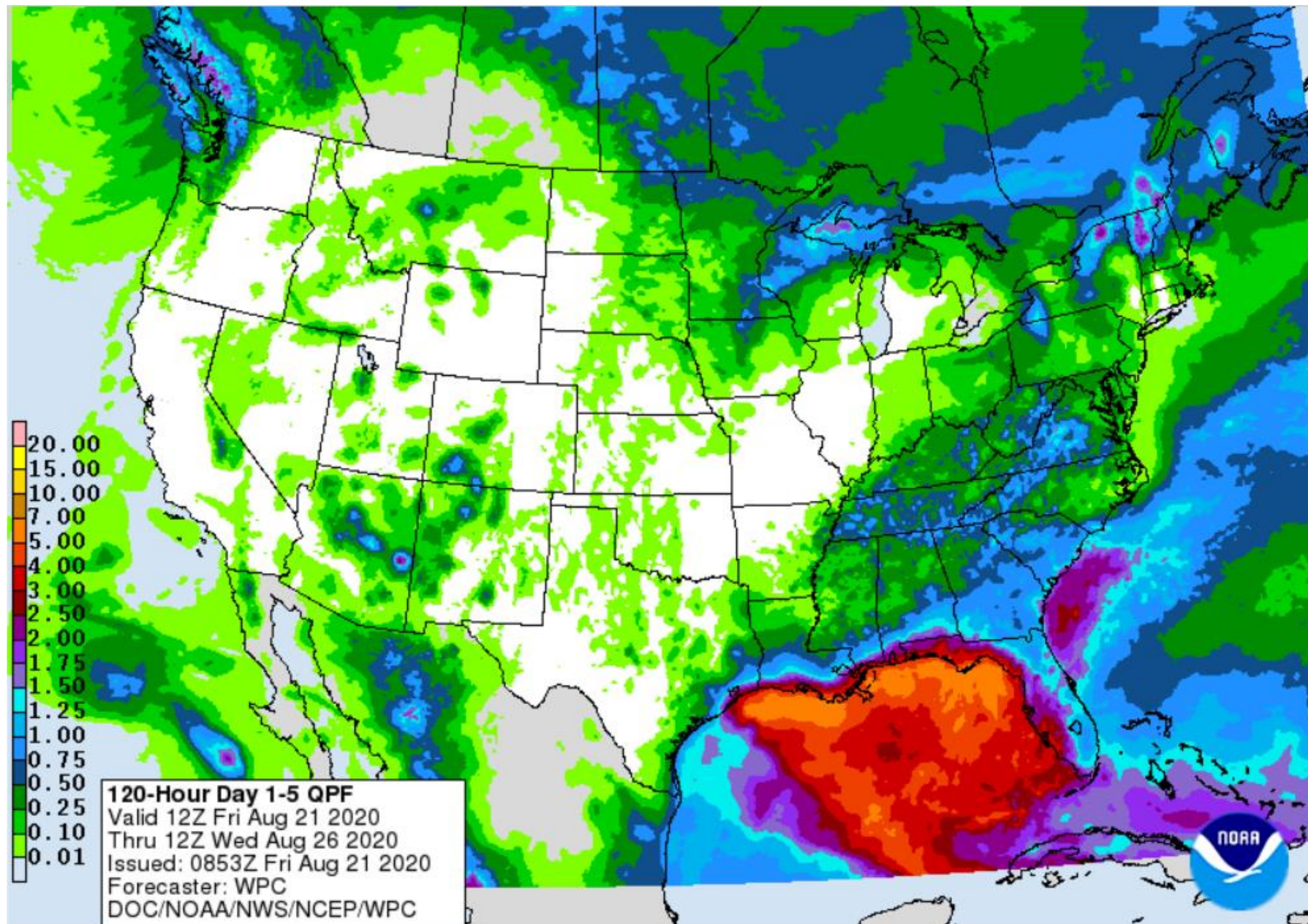
Peak Seas: 18 FT

Expected Storm Total Rainfall

Tropical Storm Laura & TDI4



Tropical Analysis and Forecast Branch
NWS National Hurricane Center



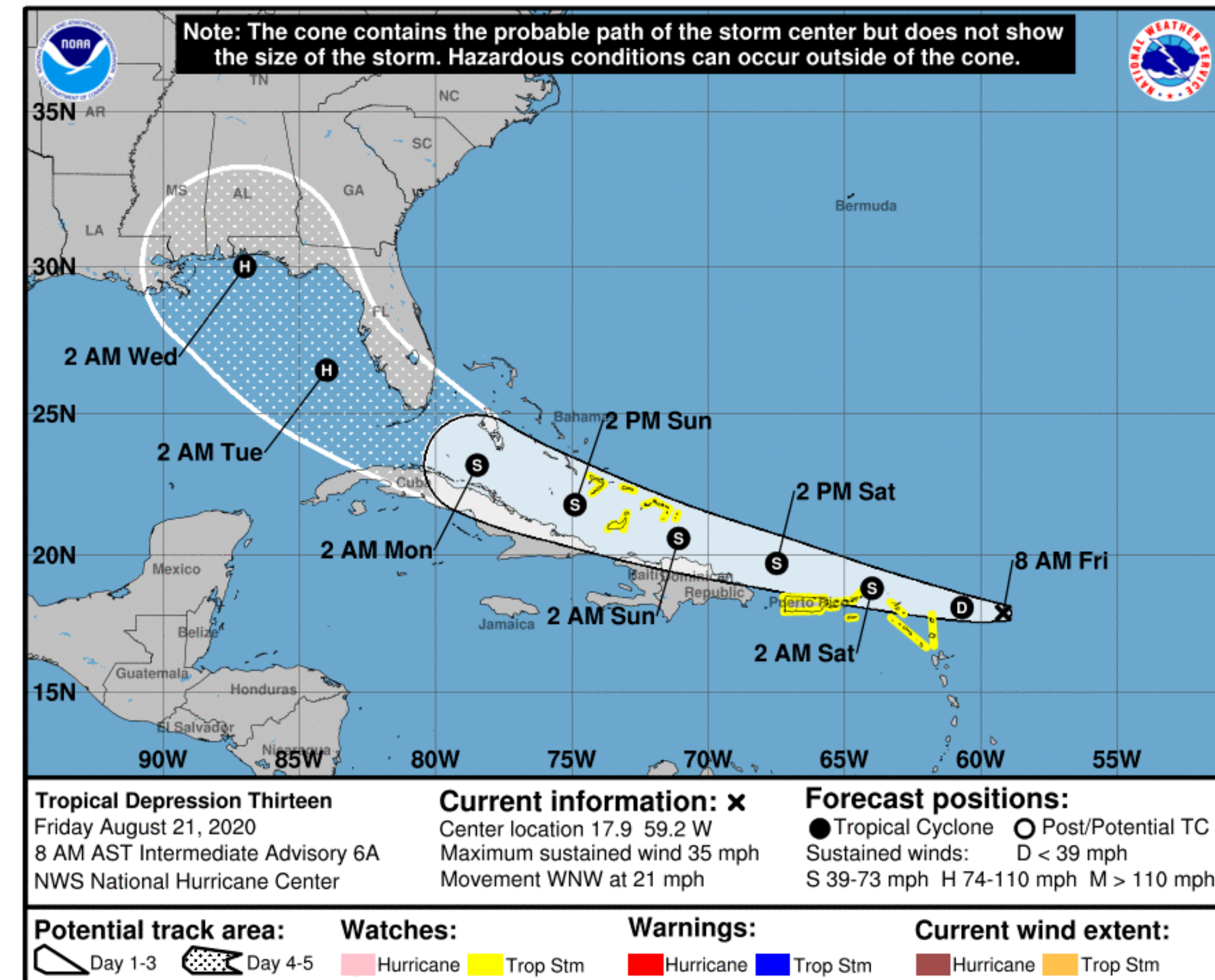
- Total rainfall in inches during the time span stated on the map.

Key Messages

Tropical Storm Laura & TD14



Tropical Analysis and Forecast Branch
NWS National Hurricane Center



Marine Key Messages:

- Both Laura & TD14 forecast to be in or near the Gulf of Mexico by early next week
- Near Hurricane Strength

IMPACTS FOR D8 (through 5 days)

Winds – High

Storm Surge – High

Rainfall/Flash Flooding – High

Tornadoes – Low to Moderate

Waves – High



Tropical Storm Laura & TD 14 Briefing

You can contact the Tropical Analysis and Forecast Branch at
305-229-4424

*The Next Briefing Will Be:
Saturday 9:00 AM CDT*

You can always find get the latest graphics and information for this storm at www.hurricanes.gov



NHC_TAFB

www.nhc.noaa.gov