

IMPACTS FOR **D8**

Winds – **High**

Storm Surge – **High**

Rainfall/Flash Flooding – **Extreme**

Tornadoes – **Low**

Waves - **High**

HURRICANE SALLY BRIEFING



11:00 AM CDT
Wednesday, September 16th, 2020

Prepared by:

Jeff Lewitsky

*Tropical Analysis and Forecast Branch
NWS National Hurricane Center*



NHC_TAFB

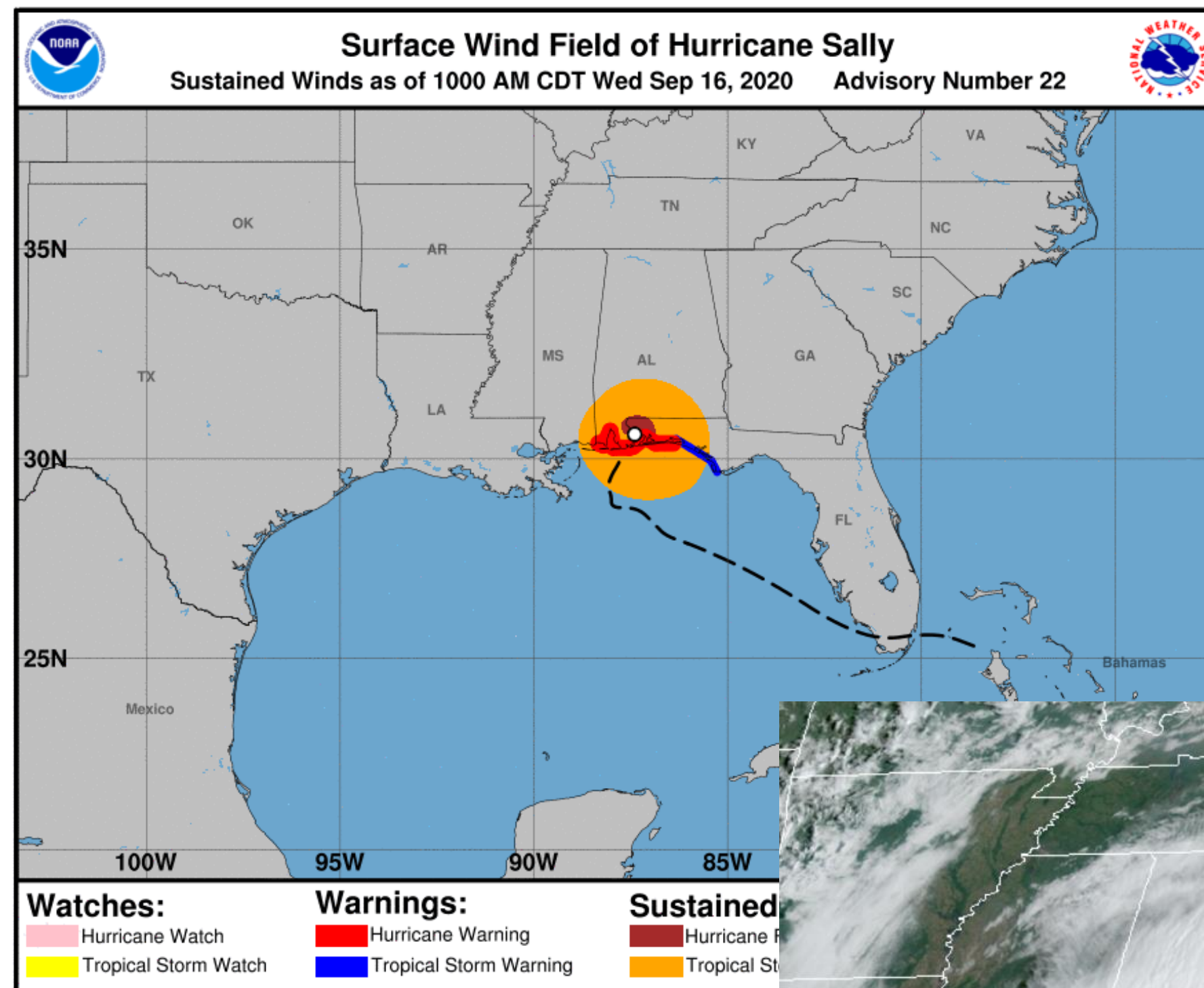
www.nhc.noaa.gov

Situation Overview

Hurricane Sally



Tropical Analysis and Forecast Branch
NWS National Hurricane Center



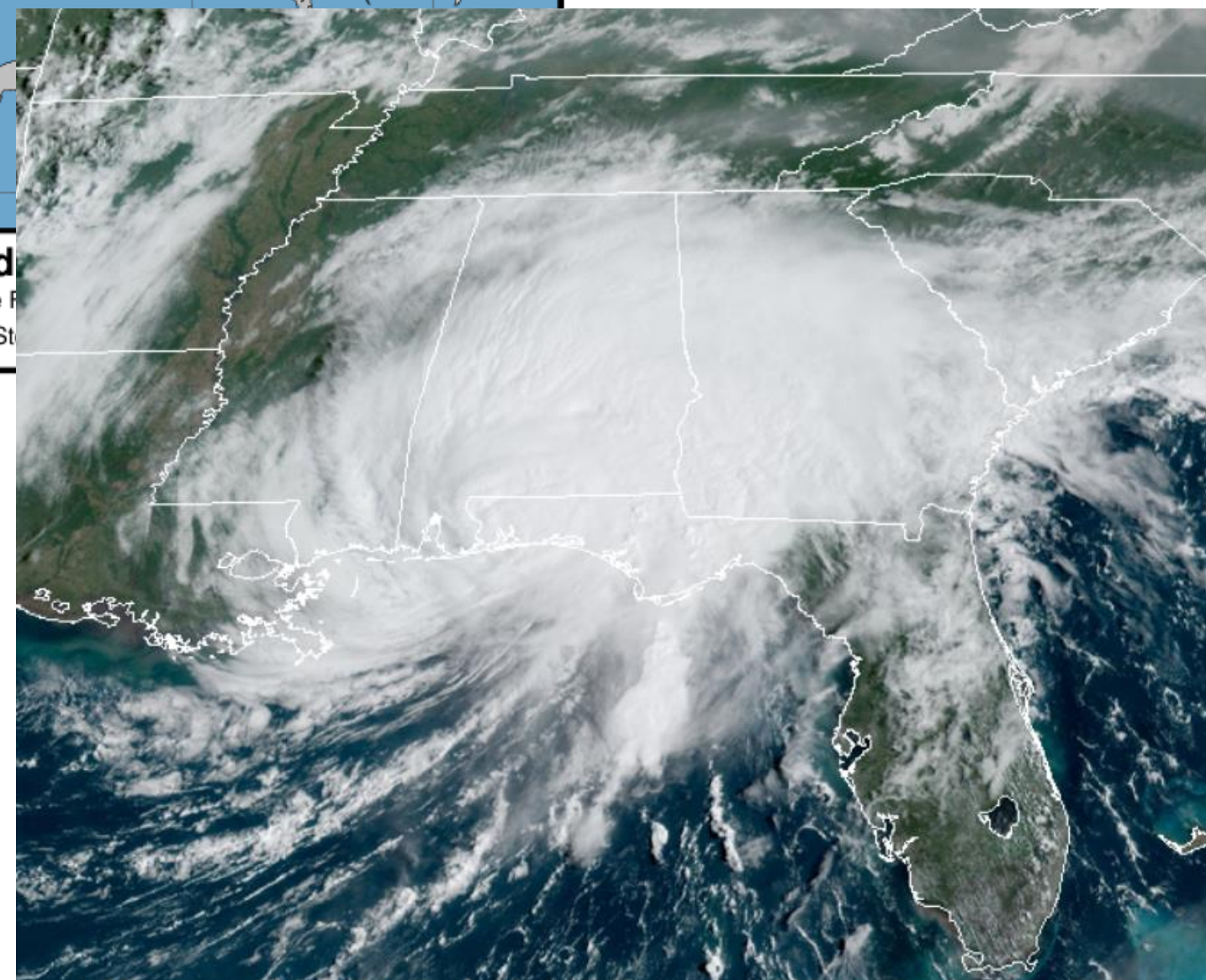
...CATASTROPHIC AND LIFE-THREATENING FLOODING OCCURRING OVER PORTIONS OF THE FLORIDA PANHANDLE AND SOUTHERN ALABAMA...

Summary of 1000 AM CDT Information...

LOCATION...30.6N 87.4W
ABOUT 15 MI WNW OF PENSACOLA, FL
MAXIMUM SUSTAINED WINDS...80 MPH
PRESENT MOVEMENT...NNE AT 5 MPH

SIZE...

64 KT..... 30NE 25SE 0SW 25NW.
50 KT..... 60NE 40SE 30SW 50NW.
34 KT..... 90NE 110SE 80SW 70NW.
12 FT SEAS.. 0NE 135SE 90SW 0NW.

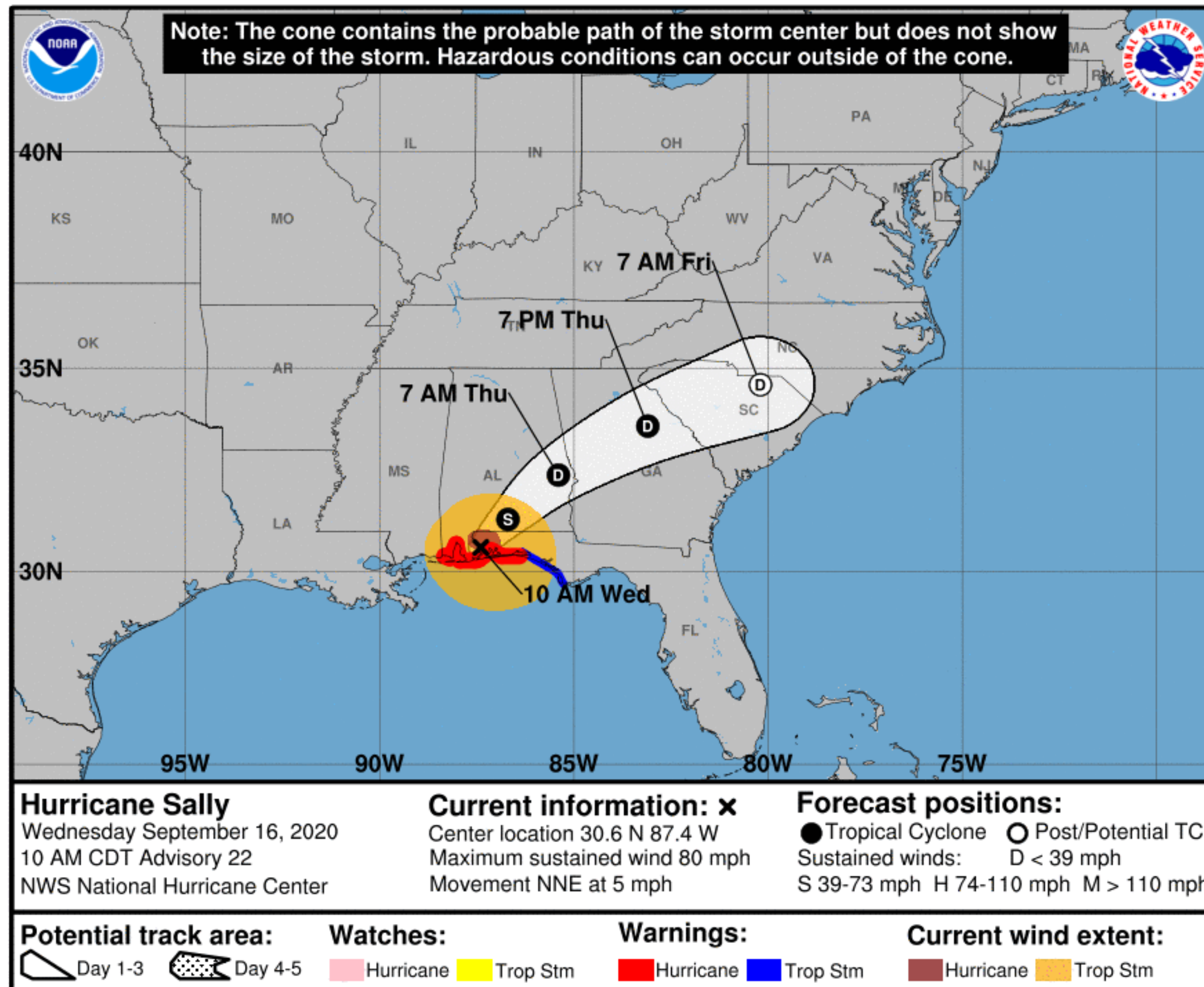


Forecast Information

Hurricane Sally



Tropical Analysis and Forecast Branch
NWS National Hurricane Center



NOTE: Do not focus on the exact track. Impacts can occur well outside the area enclosed by the cone.

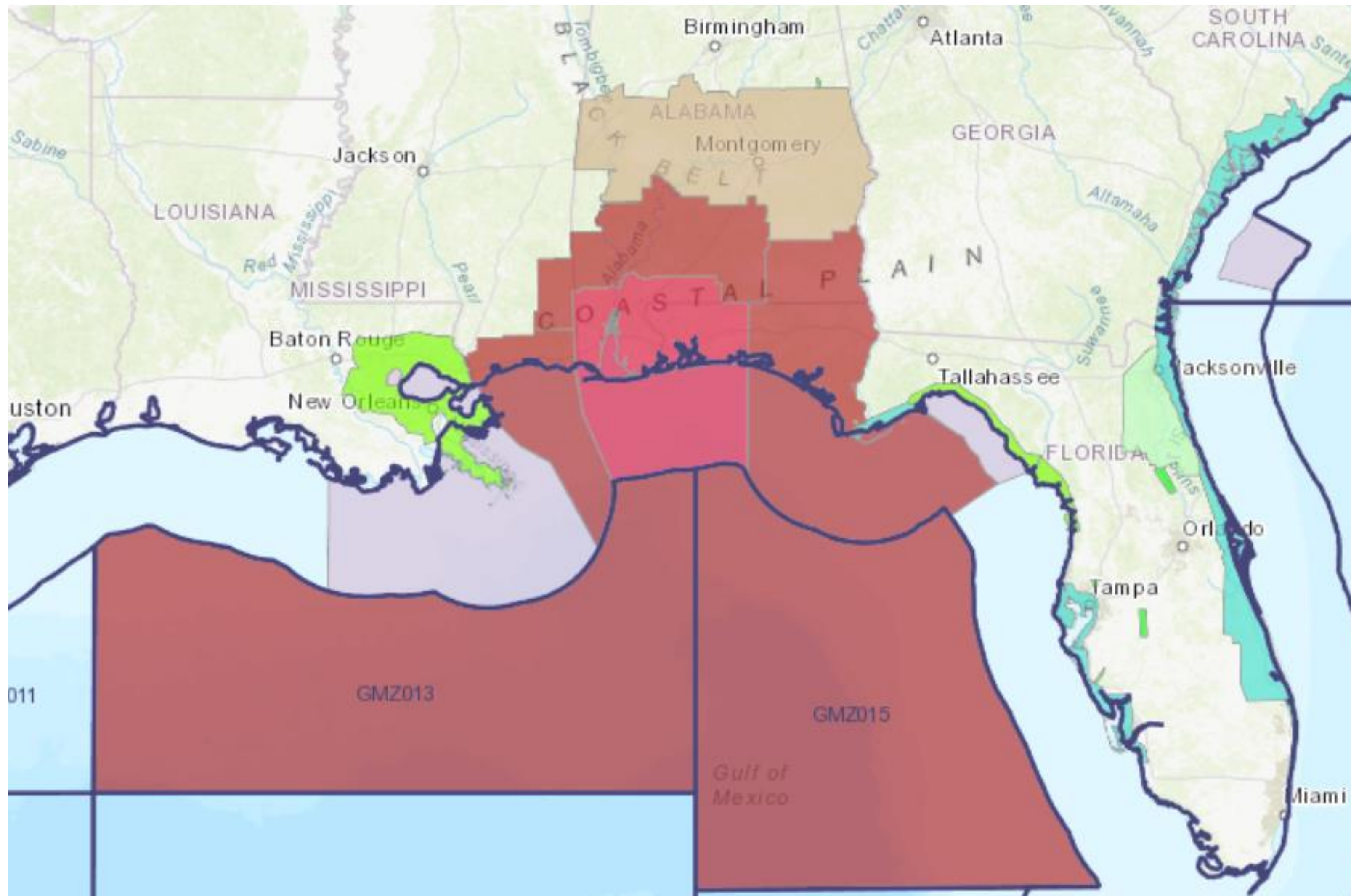
- **Sally still a hurricane.**
 - **Very slow movement to N-NE, will begin to increase speed and turn NE.**
 - Current center forecast positions illustrated by dots
 - White swath of potential track is average track error added to each side of the forecast track through day 3
- ** Swaths are calculated using average track errors and actual track may be well inside, or possibly outside the potential track areas indicated.

Hazards Map

Hurricane Sally



Tropical Analysis and Forecast Branch
NWS National Hurricane Center



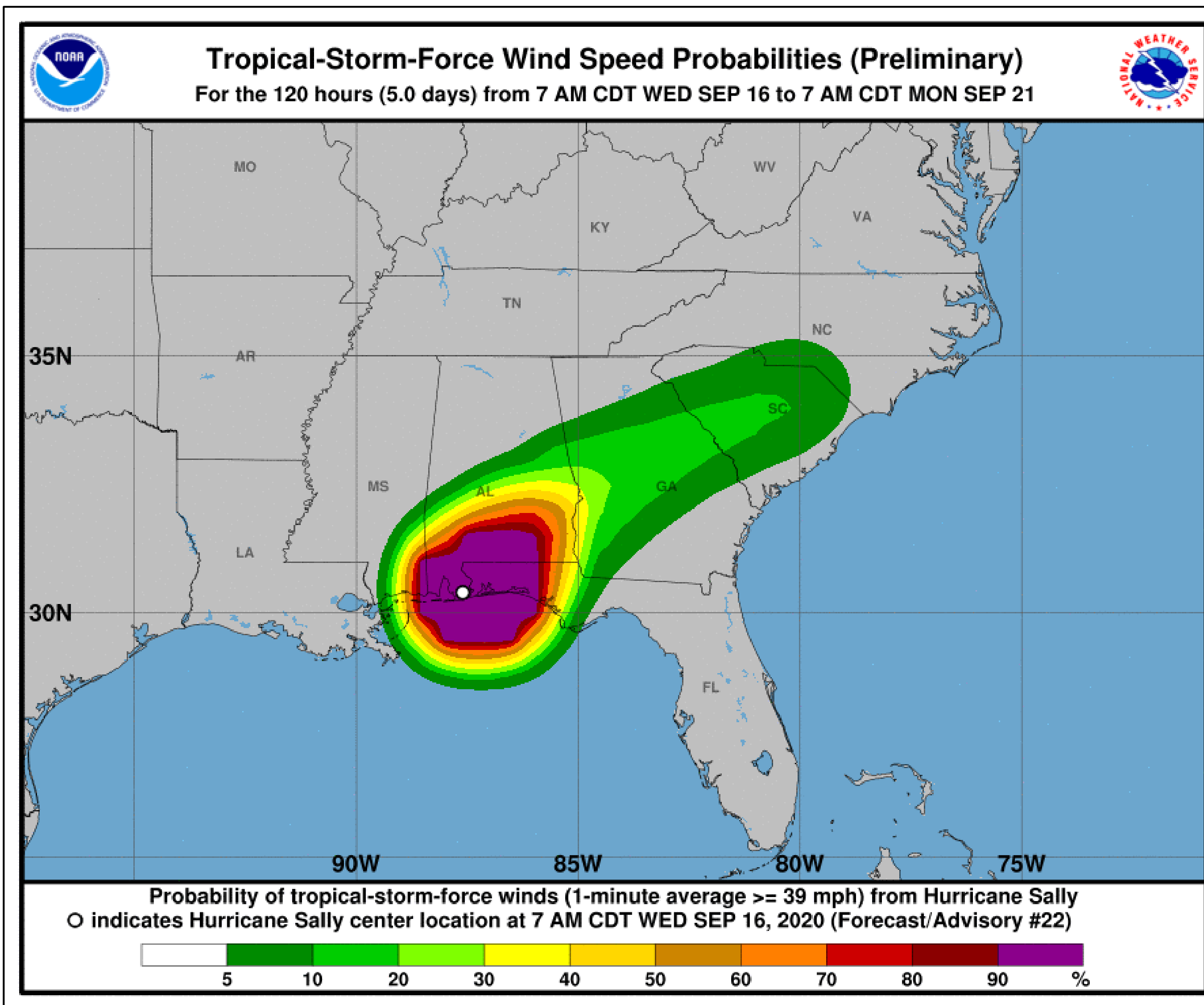
■ <https://nowcoast.noaa.gov/>

T.S. Wind Speed Probabilities

Hurricane Sally



Tropical Analysis and Forecast Branch
NWS National Hurricane Center



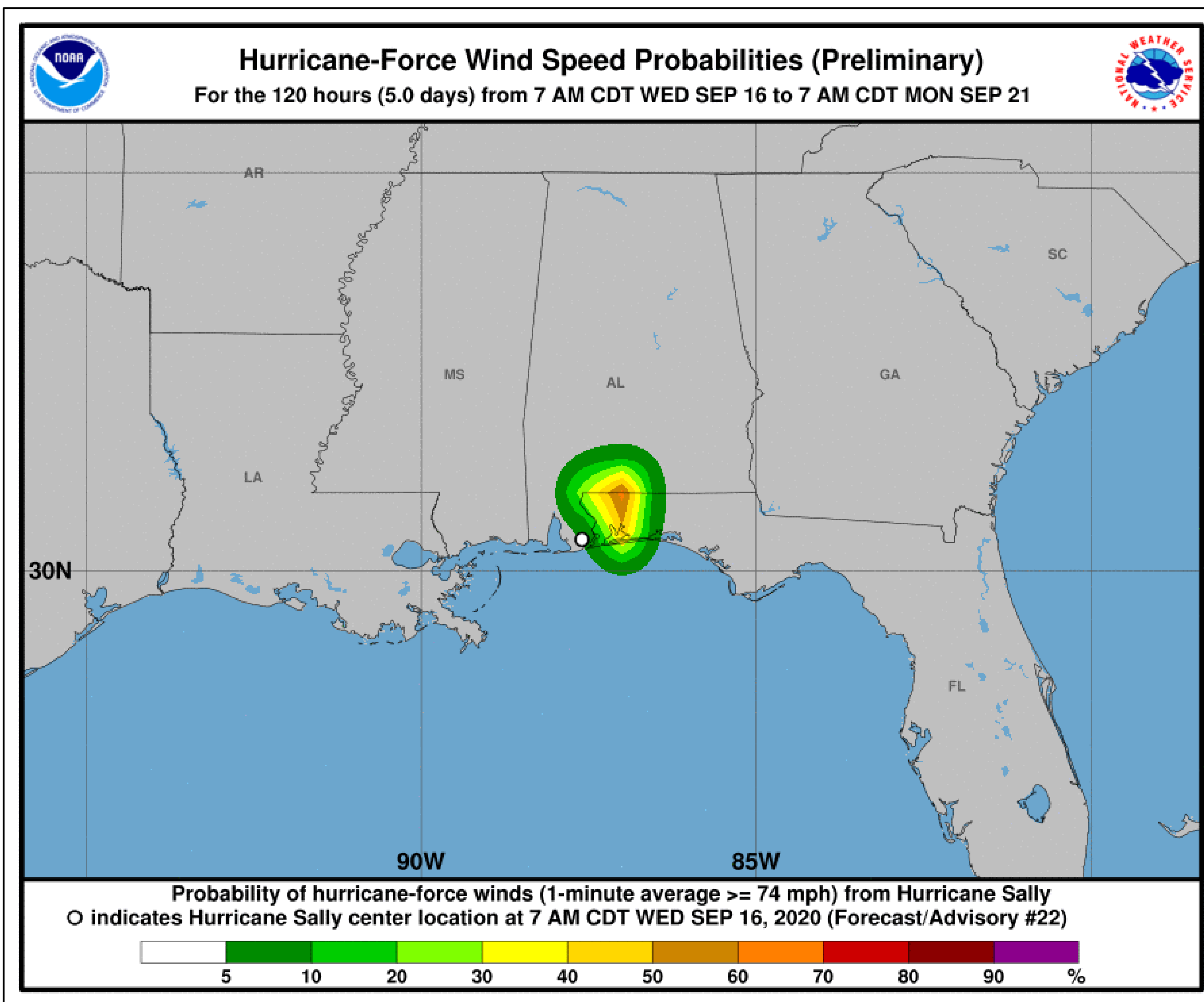
- TS Conditions for AL coast/inland to western Florida Panhandle/inland
- Probabilities of sustained tropical storm force winds (34 kt to 63 kt) over the next 5 days, based off this cyclone's wind radii and track.
- Clear or dark green are the lowest chances of 0-30%.
- Yellow to orange is 31-70%
- Red through purple are the highest probabilities of 71%-100%
- See the color bar below the image for more details.

Hurricane Wind Speed Probabilities

Hurricane Sally



Tropical Analysis and Forecast Branch
NWS National Hurricane Center



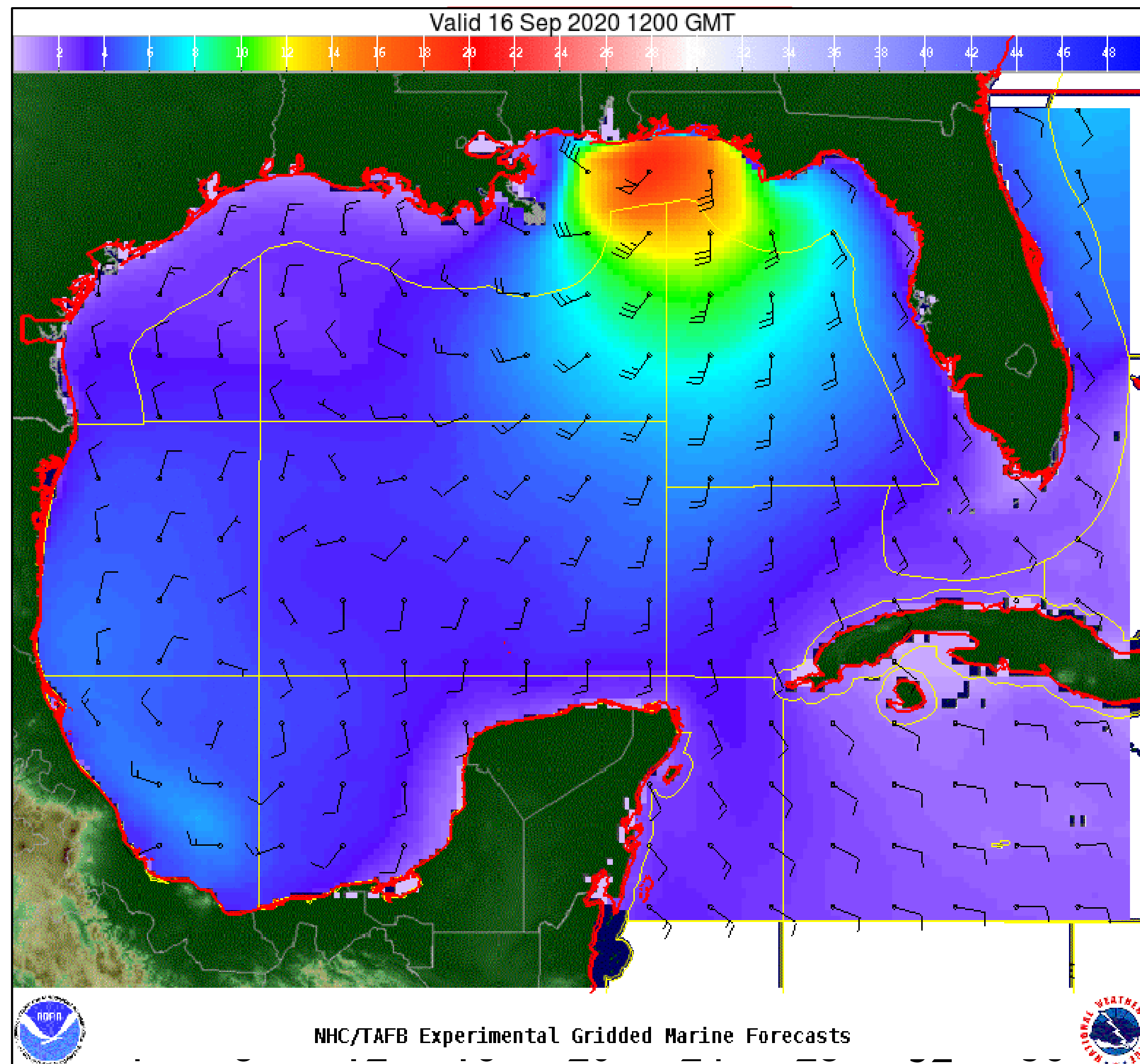
- From Pensacola to Ft. Walton Beach, FL – 20-30%
- Inland including Harold, Allentown, Century, FL to Rock Hill, Brewton, Wawbeek, AL – 40-60%
- Probabilities of sustained hurricane force winds (64 kt +) over the next 5 days, based off this cyclone's wind radii and track.
- Clear or dark green are the lowest chances of 0-30%.
- Yellow to orange is 31-70%
- Red through purple are the highest probabilities of 71%-100%
- See the color bar below the image for more details.

Wind And Waves

Hurricane Sally



Tropical Analysis and Forecast Branch
NWS National Hurricane Center



Current Conditions

10am CDT, Wednesday, September 16th, 2020

Peak Winds: 70 KT GUSTS 85 KT

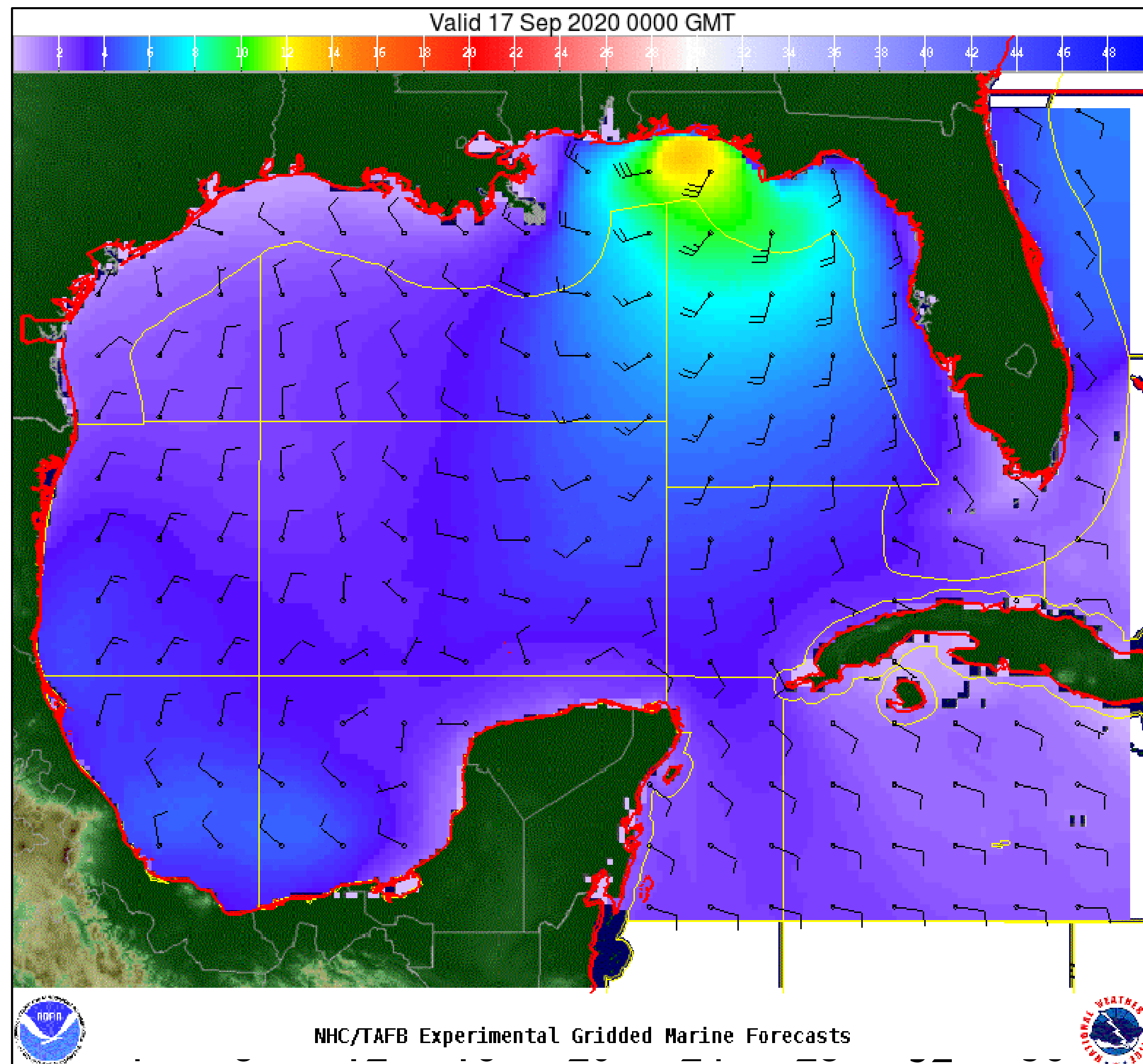
Peak Seas: 25 FT (just offshore of Pensacola, FL)

Wind And Waves

Hurricane Sally



Tropical Analysis and Forecast Branch
NWS National Hurricane Center



Current Conditions

7pm CDT, Wednesday, September 16th, 2020

Peak Winds: 45 KT GUSTS 55 KT

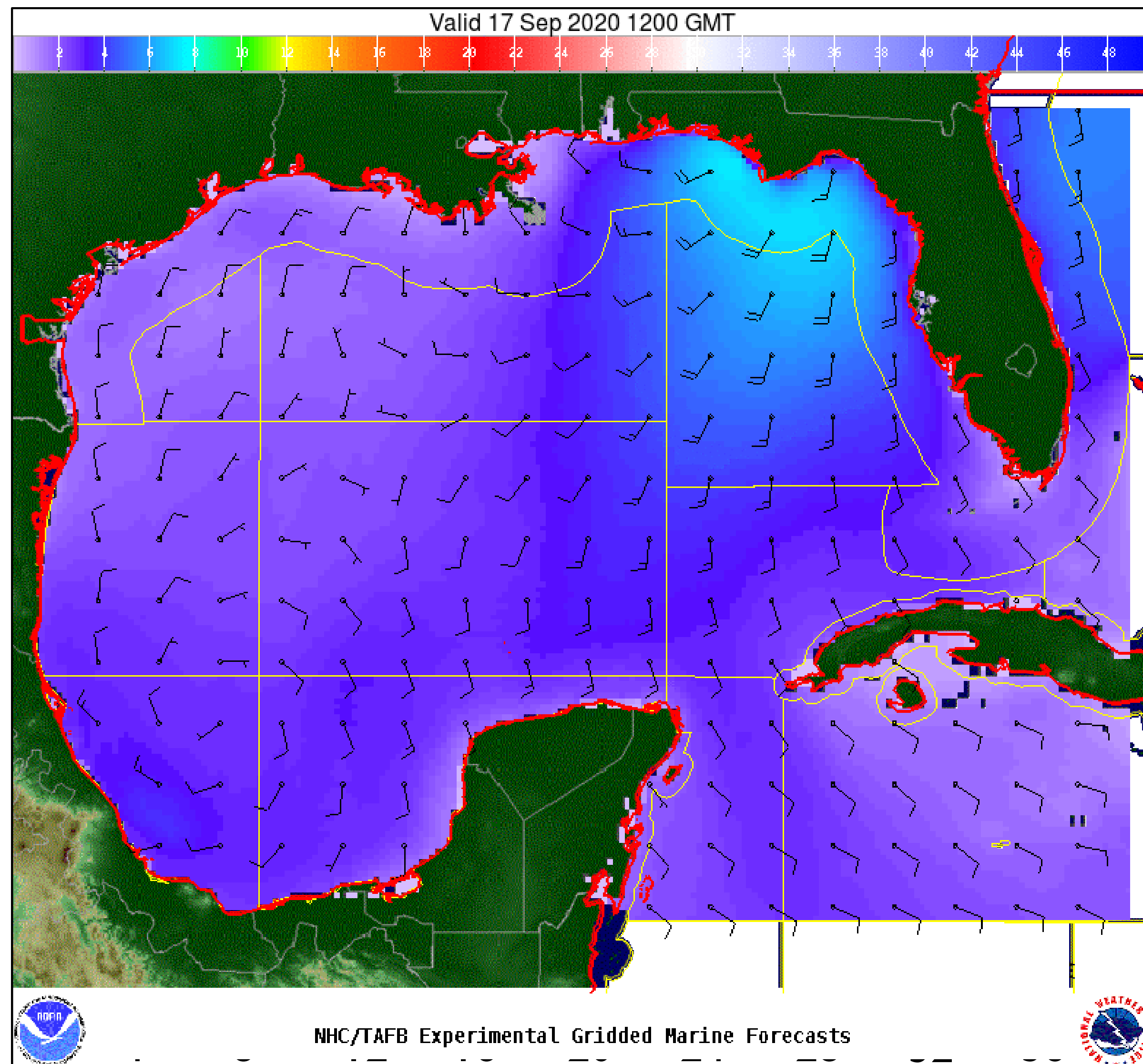
Peak Seas: 14 FT

Wind And Waves

Hurricane Sally



Tropical Analysis and Forecast Branch
NWS National Hurricane Center



24 Hour Forecast

7am CDT, Thursday, September 17th, 2020

Peak Winds: 30 KT GUSTS TO 40 KT
(inland)

Peak Seas: 6 FT

Time of Departure of Tropical Storm Force Winds



Tropical Analysis and Forecast Branch
NWS National Hurricane Center

Hurricane Sally

■ Mobile, AL

TIME OF DEPARTURE	DATE	DAY	HOURS
Most Likely	9/16 3PM EDT	Wednesday	4
Latest Reasonable	9/16 5PM EDT	Wednesday	6

■ Pensacola, FL

TIME OF DEPARTURE	DATE	DAY	HOURS
Most Likely	9/16 6PM EDT	Wednesday	7
Latest Reasonable	9/16 8PM EDT	Wednesday	9

■ Panama City, FL

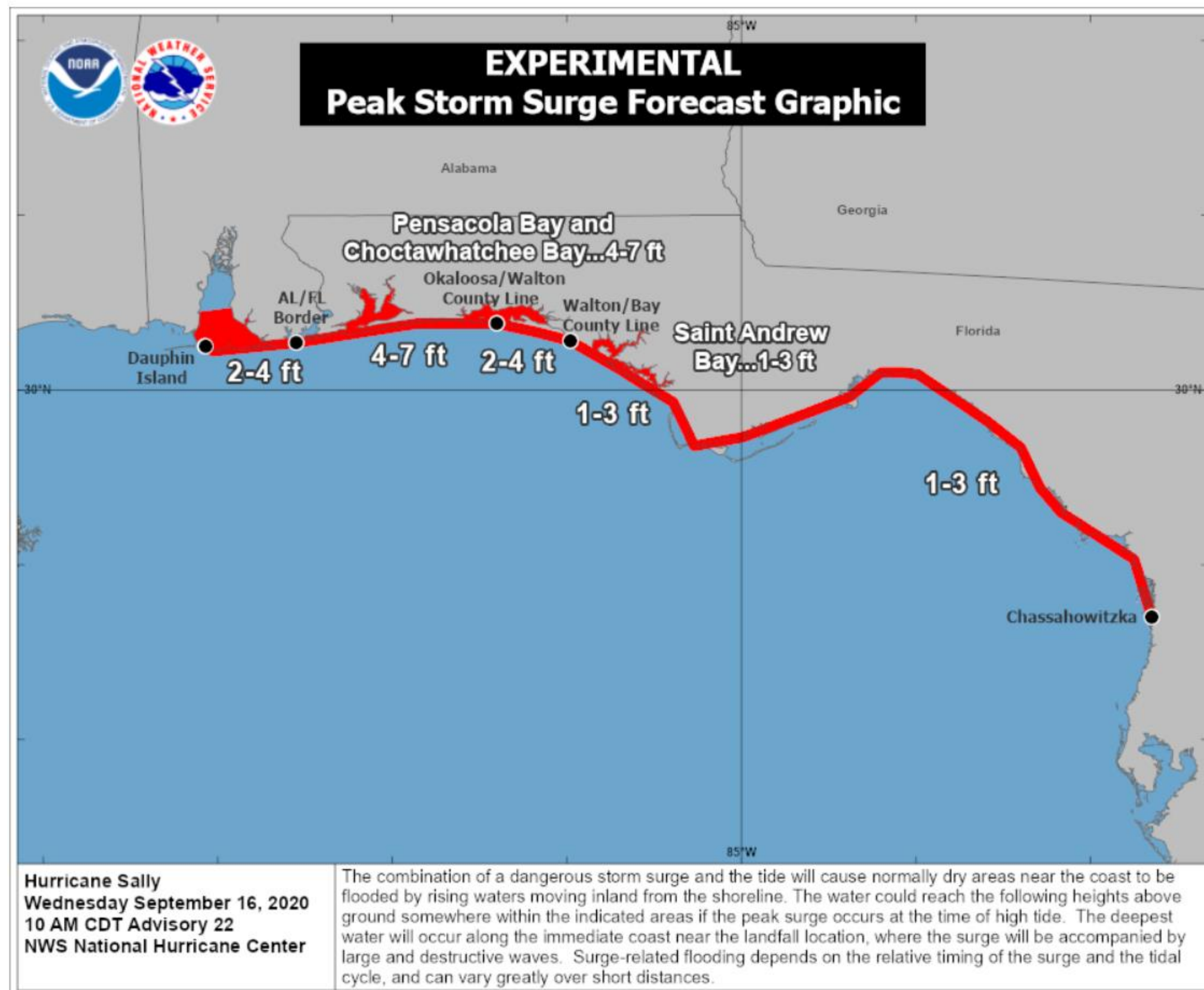
TIME OF DEPARTURE	DATE	DAY	HOURS
Most Likely	9/16 8PM EDT	Wednesday	9
Latest Reasonable	9/17 2AM EDT	Thursday	15

Storm Surge Amounts and Warnings

Hurricane Sally



Tropical Analysis and Forecast Branch
NWS National Hurricane Center



Storm Surge Watch/Warning Graphic*

Hurricane Sally
Advisory 022 Issued: 10:00 AM CDT Wed Sep 16



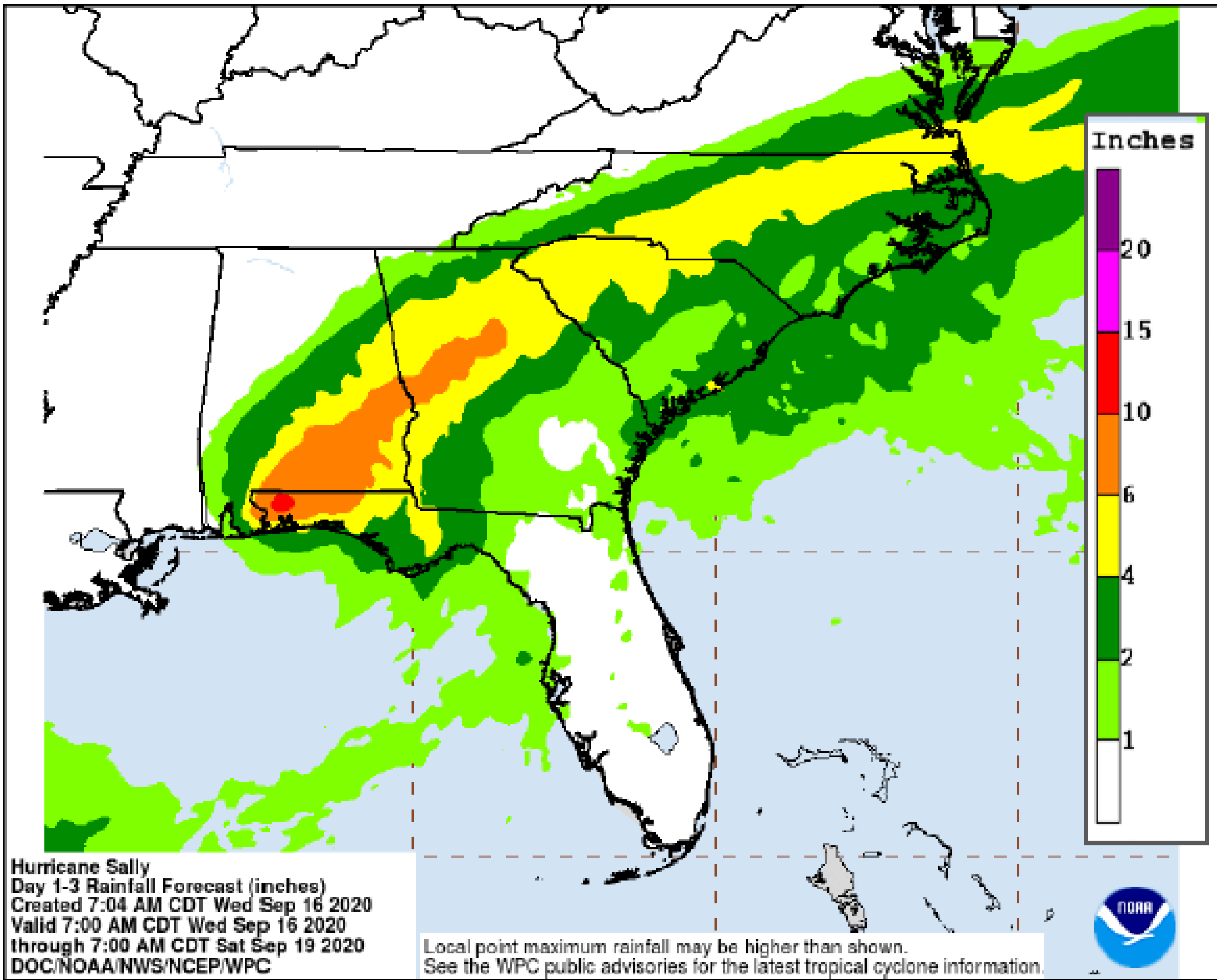
Expected Storm Total Rainfall and Chance of Rainfall Flooding

Hurricane Sally

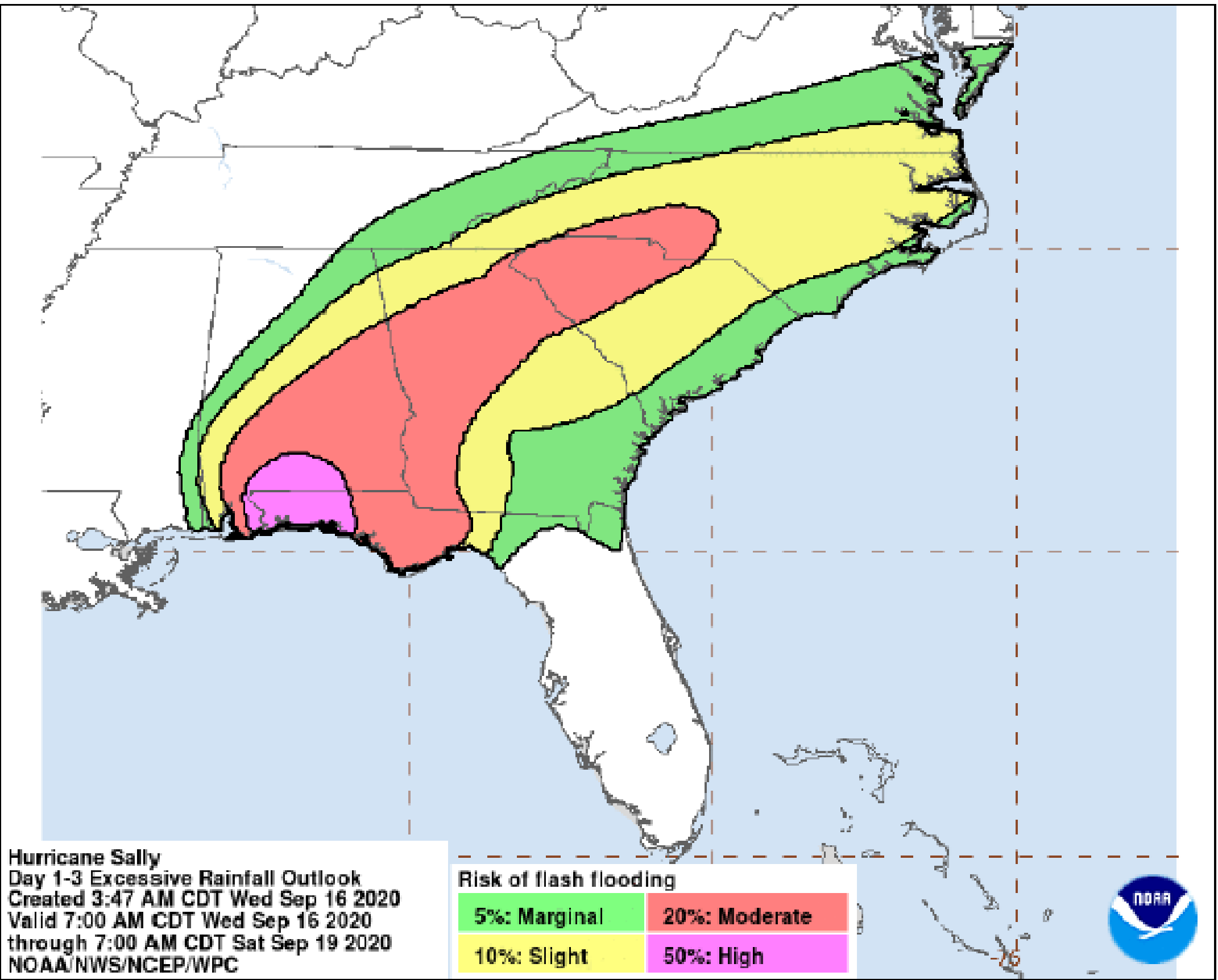


Tropical Analysis and Forecast Branch
NWS National Hurricane Center

3-Day Rainfall Forecast Through Early Saturday, Sep. 19



Day 1-3 Maximum ERO Risk through 12Z Saturday



Far southern Alabama and Florida Panhandle: *Additional rainfall shown in graphic.* **TOTALS 10-20", isolated 35"**

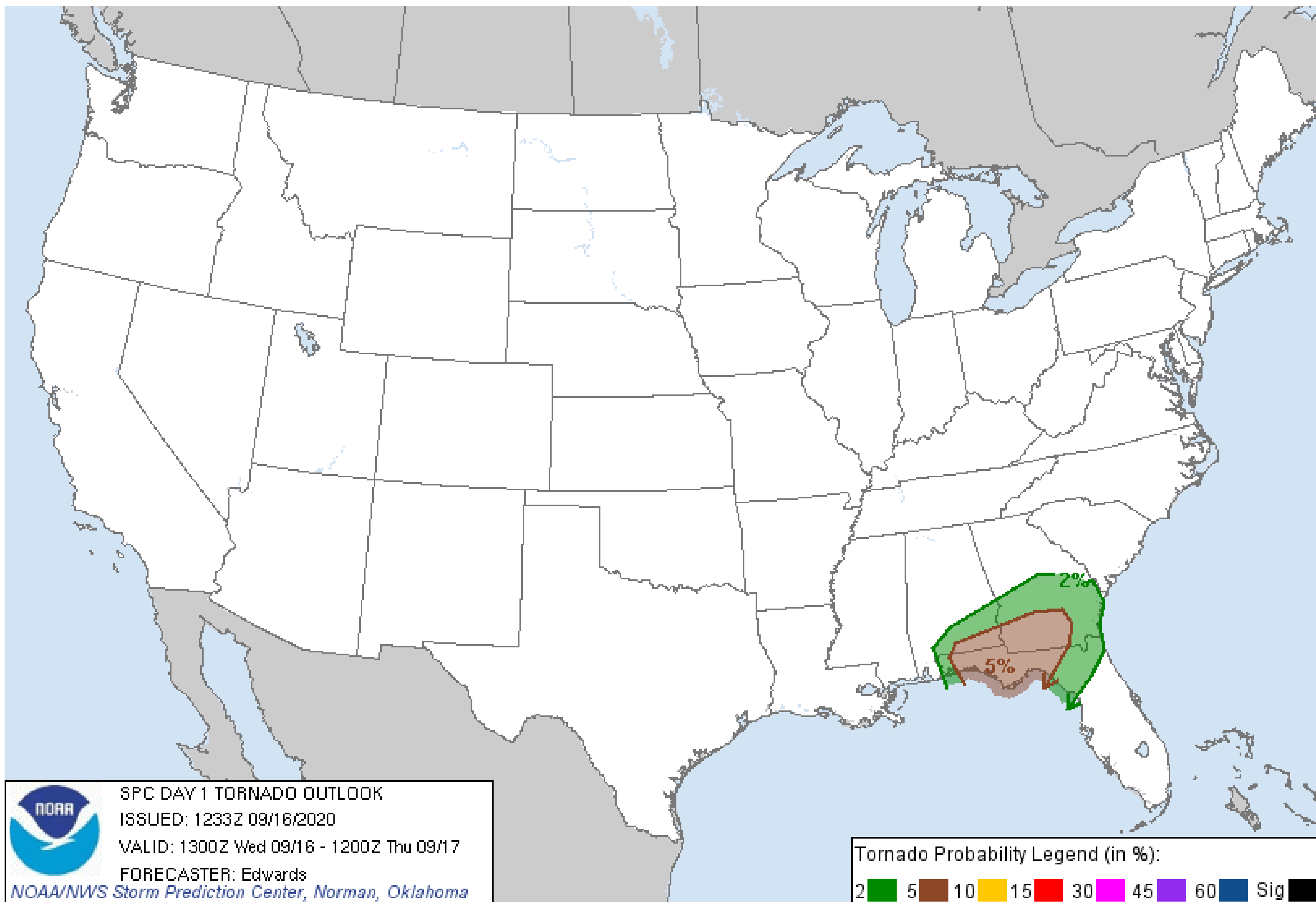
High Risk includes: Pensacola, Destin, Fort Walton Beach
Moderate Risk includes: Montgomery, Atlanta, Greenville SC, Charlotte

Tornado Outlook – Day 1

Hurricane Sally



Tropical Analysis and Forecast Branch
NWS National Hurricane Center



- A few tornadoes may occur today and tonight across portions of the Florida Panhandle, southeast Alabama, and southwest Georgia.

(source: NOAA/NWS
Storm Prediction Center)

Key Messages

Hurricane Sally



Tropical Analysis and Forecast Branch
NWS National Hurricane Center



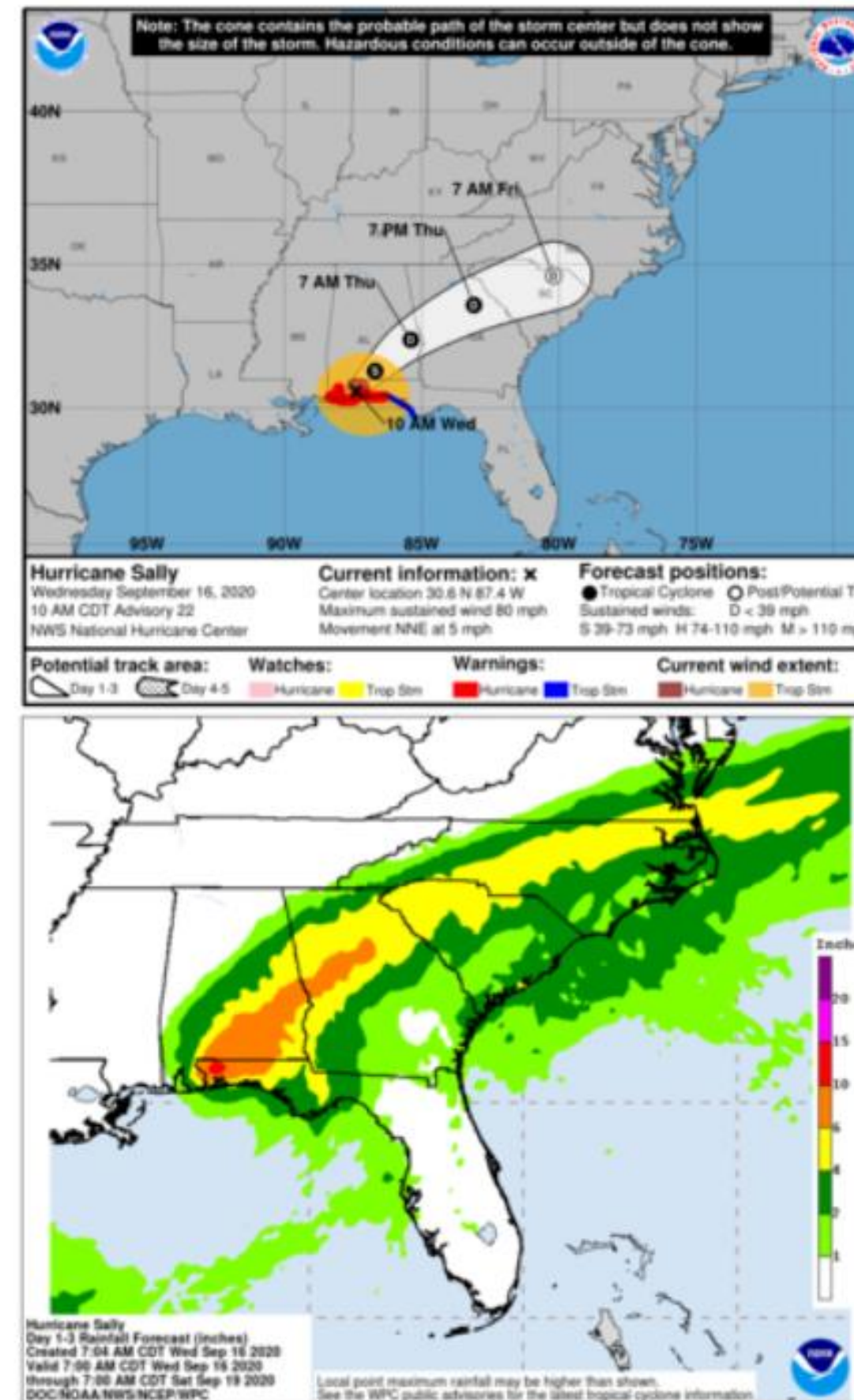
Key Messages for Hurricane Sally Advisory 22: 10:00 AM CDT Wed Sep 16, 2020



1. Historic and catastrophic flooding, including widespread moderate to major river flooding, is unfolding along and just inland from west of Tallahassee, Florida, to Mobile Bay, Alabama. Significant and widespread flooding is likely across inland portions of Alabama into central Georgia, and possible across western South Carolina, western and central North Carolina, and far southeast Virginia.

2. Life-threatening storm surge is occurring along portions of the coastline from Alabama to the western Florida Panhandle, including Pensacola Bay.

3. Hurricane conditions are expected to continue this afternoon within portions of the Hurricane Warning area in southern Alabama and the western Florida panhandle.



For more information go to hurricanes.gov

IMPACTS FOR D8:

Winds – High

Storm Surge – High

Rainfall/Flash Flooding – Extreme

Tornadoes – Low

Waves - High



HURRICANE SALLY BRIEFING

You can contact the Tropical Analysis and Forecast Branch at
305-229-4424

*The Next Briefing Will Be:
Wednesday 5:00 PM CDT (if requested)*

You can always find get the latest graphics and information for this storm at www.hurricanes.gov



NHC_TAFB

www.nhc.noaa.gov