

IMPACTS FOR District 8

Winds/US Coast – None

Winds/SRR – High

Waves/US Coastal – Low

Waves/SRR – Moderate

through next 5 days

US Storm Surge – None

US Rainfall/Flash Flooding – Low

US Tornadoes – None

TROPICAL STORM RAFAEL BRIEFING



10:00 AM CST
Saturday, November 9, 2024
Prepared by:

Stephen Konarik

*Tropical Analysis and Forecast Branch
NWS National Hurricane Center*



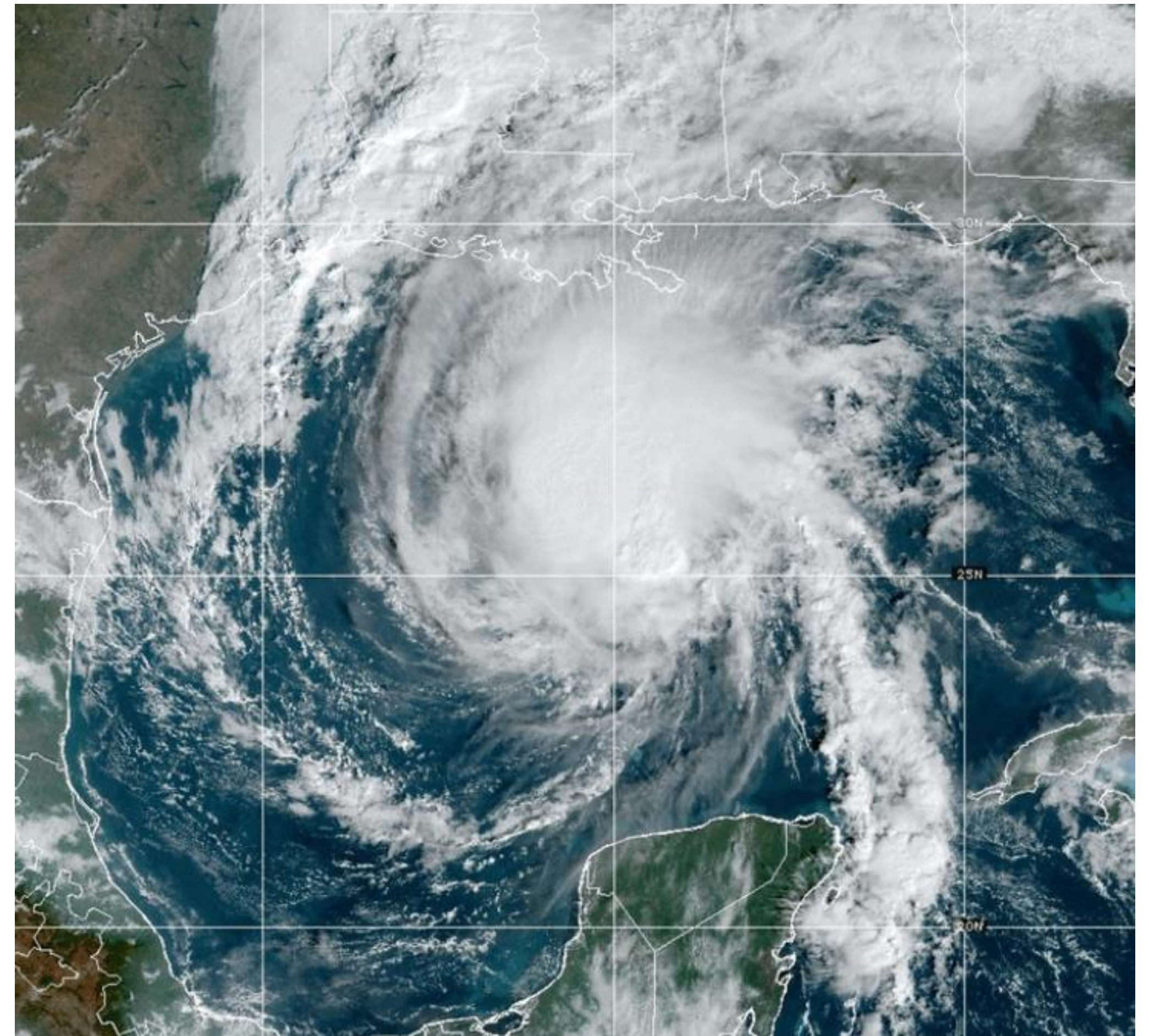
Changes since yesterday

Tropical Storm Rafael



Tropical Analysis and Forecast Branch
NWS National Hurricane Center

- Rapid weakening; now a Tropical Storm
- Peak seas have fallen to around 20 ft

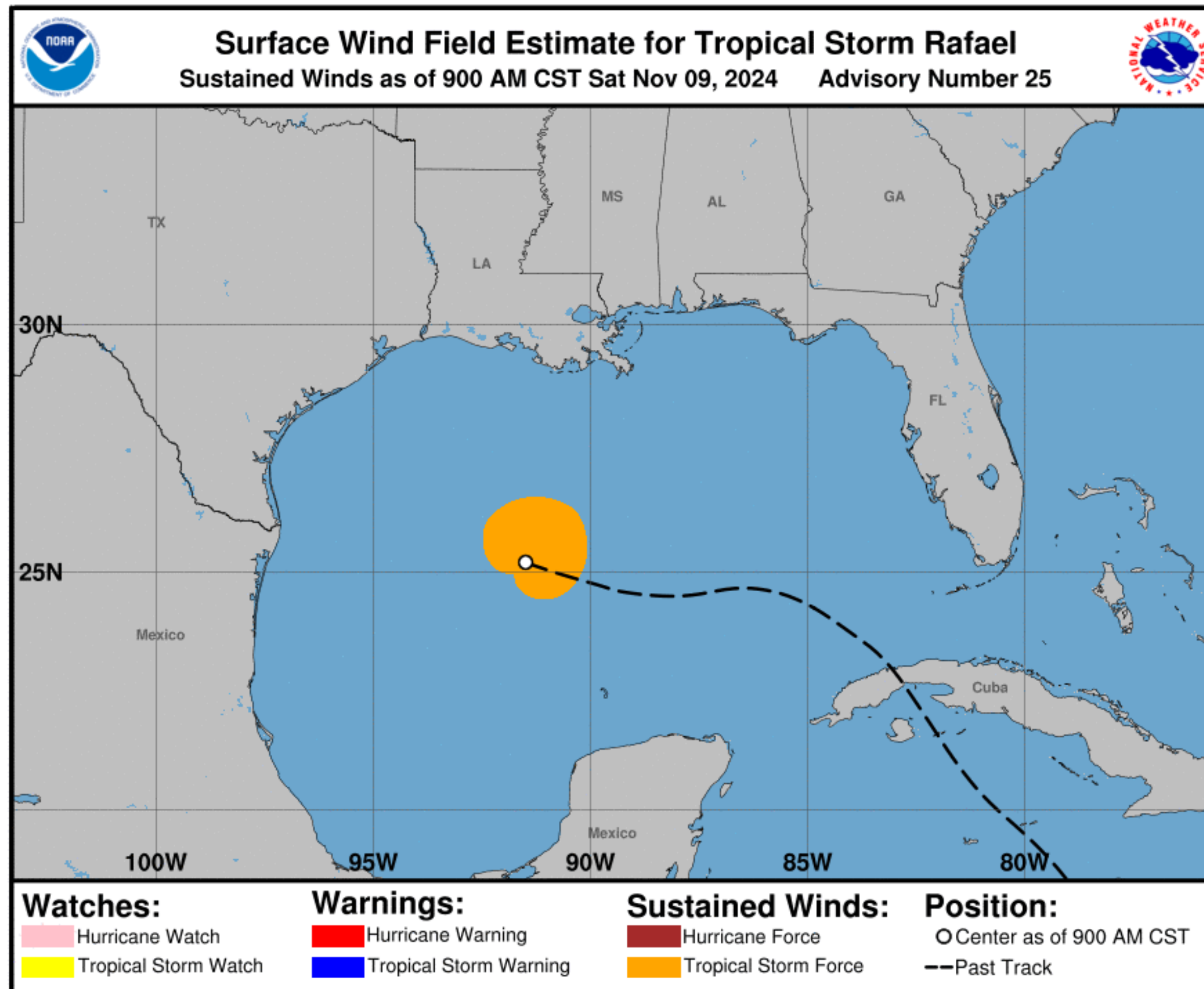


Situation Overview

Tropical Storm Rafael



Tropical Analysis and Forecast Branch
NWS National Hurricane Center



...AIR FORCE HURRICANE HUNTERS FIND
RAFAEL CONTINUES TO WEAKEN...

SUMMARY OF 900 AM CST...1500 UTC...

LOCATION...25.2N 91.5W

ABOUT 400 NM NNW OF PROGRESO MEXICO

MAXIMUM SUSTAINED WINDS...45 KT

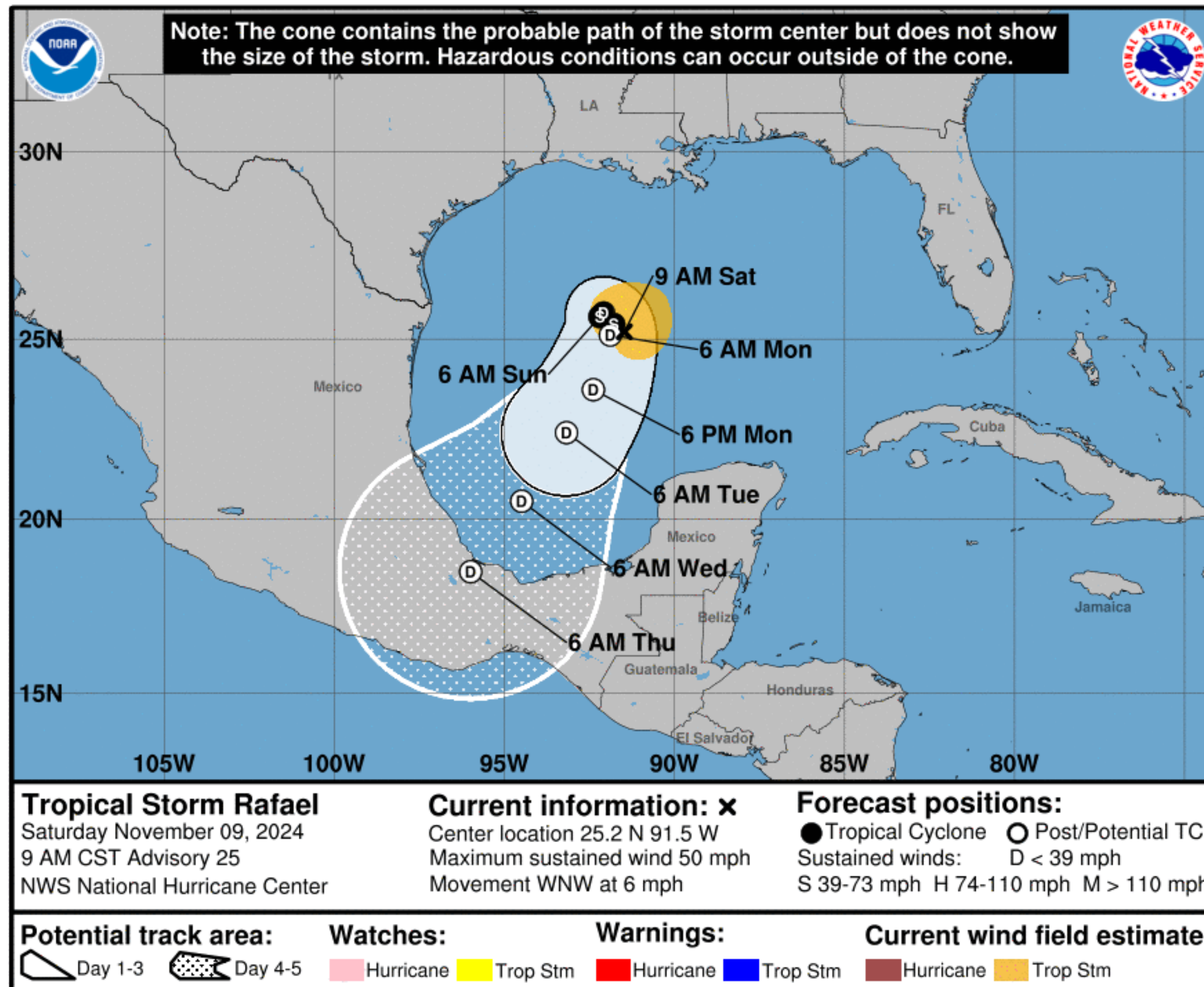
PRESENT MOVEMENT...WNW AT 5 KT

Forecast Information

Tropical Storm Rafael



Tropical Analysis and Forecast Branch
NWS National Hurricane Center



NOTE: Do not focus on the exact track. Impacts can occur well outside the area enclosed by the cone.

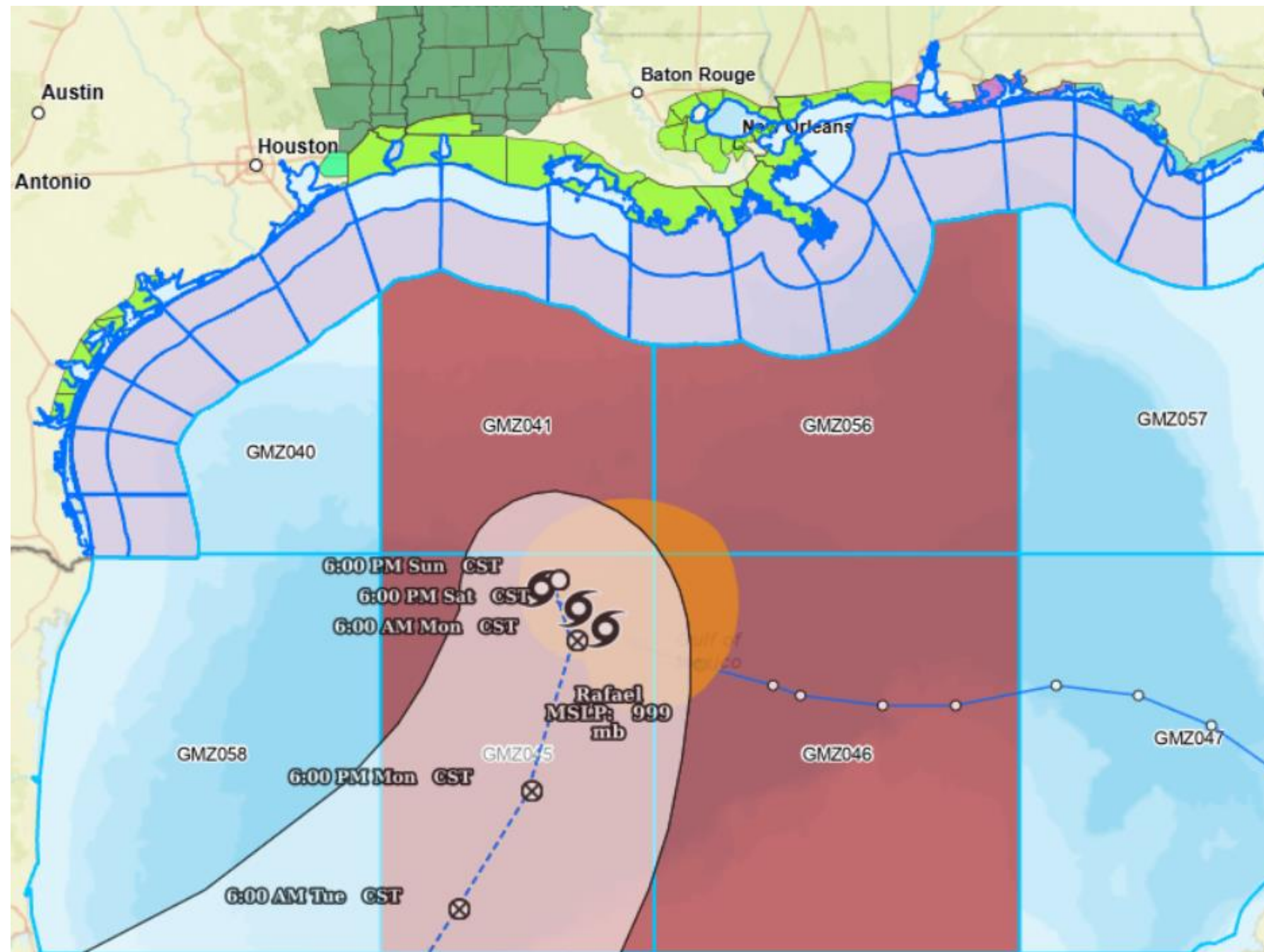
- Rafael is forecast to stall later today continuing to rapidly weaken
- By Monday, no longer expected to be “tropical” in nature, winds 25 KT or less
- The remnant low pressure should move southwestward through the SW Gulf early next week.

Hazards Map

Tropical Storm Rafael



Tropical Analysis and Forecast Branch
NWS National Hurricane Center



- Tropical Storm Warning
- High Surf Advisory (9)
- Coastal Flood Advisory
- Small Craft Advisory
- Rip Current Statement

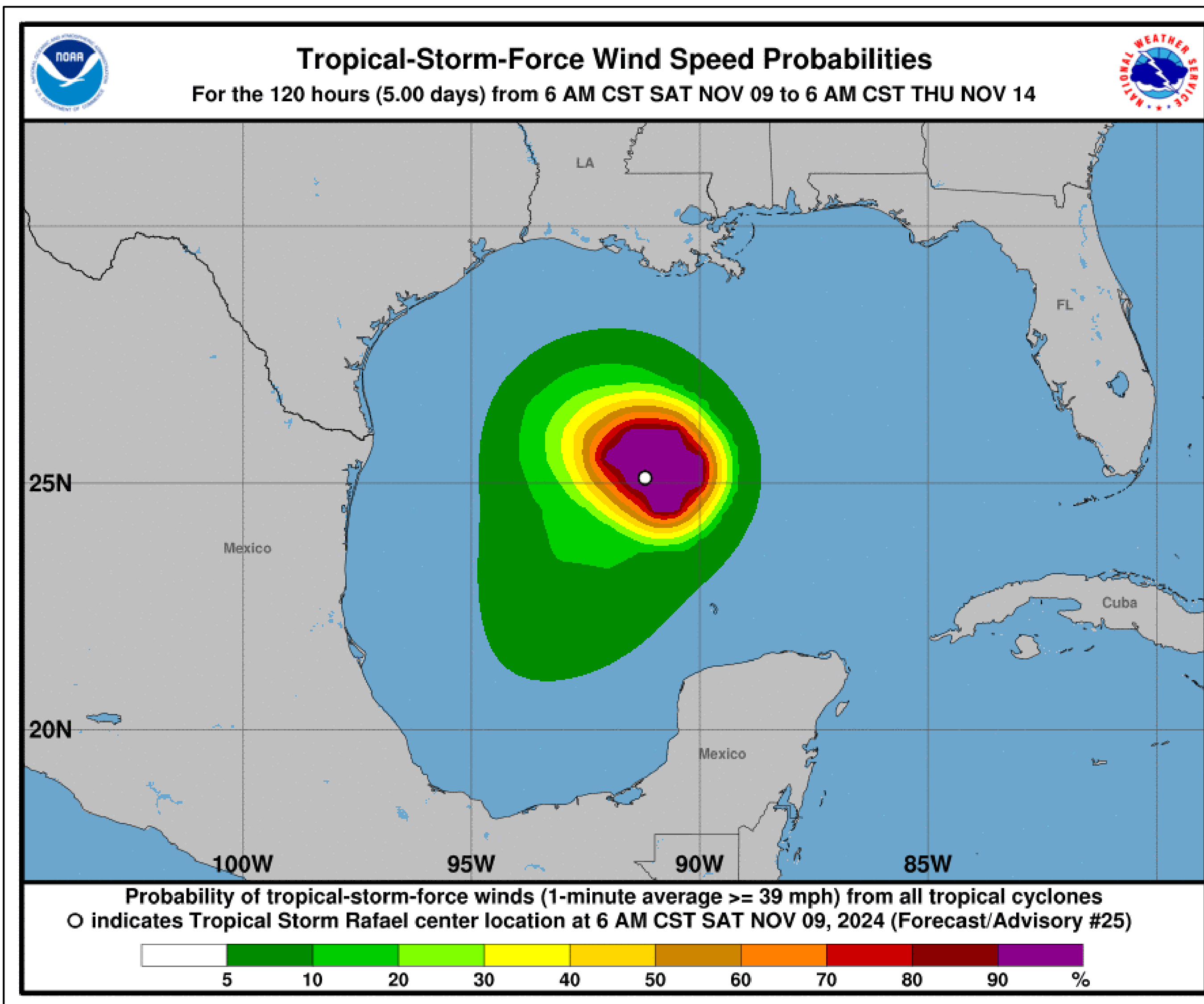
- Along the coastlines this weekend:
 - Rough seas to 10 ft
 - Gusty winds
 - Minor tidal flooding (1 ft or less)
 - High sSurf
 - Significant Rip Currents

T.S. Wind Speed Probabilities

Tropical Storm Rafael



Tropical Analysis and Forecast Branch
NWS National Hurricane Center



- The risk for TS force winds near the coast has ended
- Strong NE to E winds (20-25 KT) through tonight for all nearshore waters/coastal locations

Expected Storm Total Rainfall and Chance of Rainfall Flooding

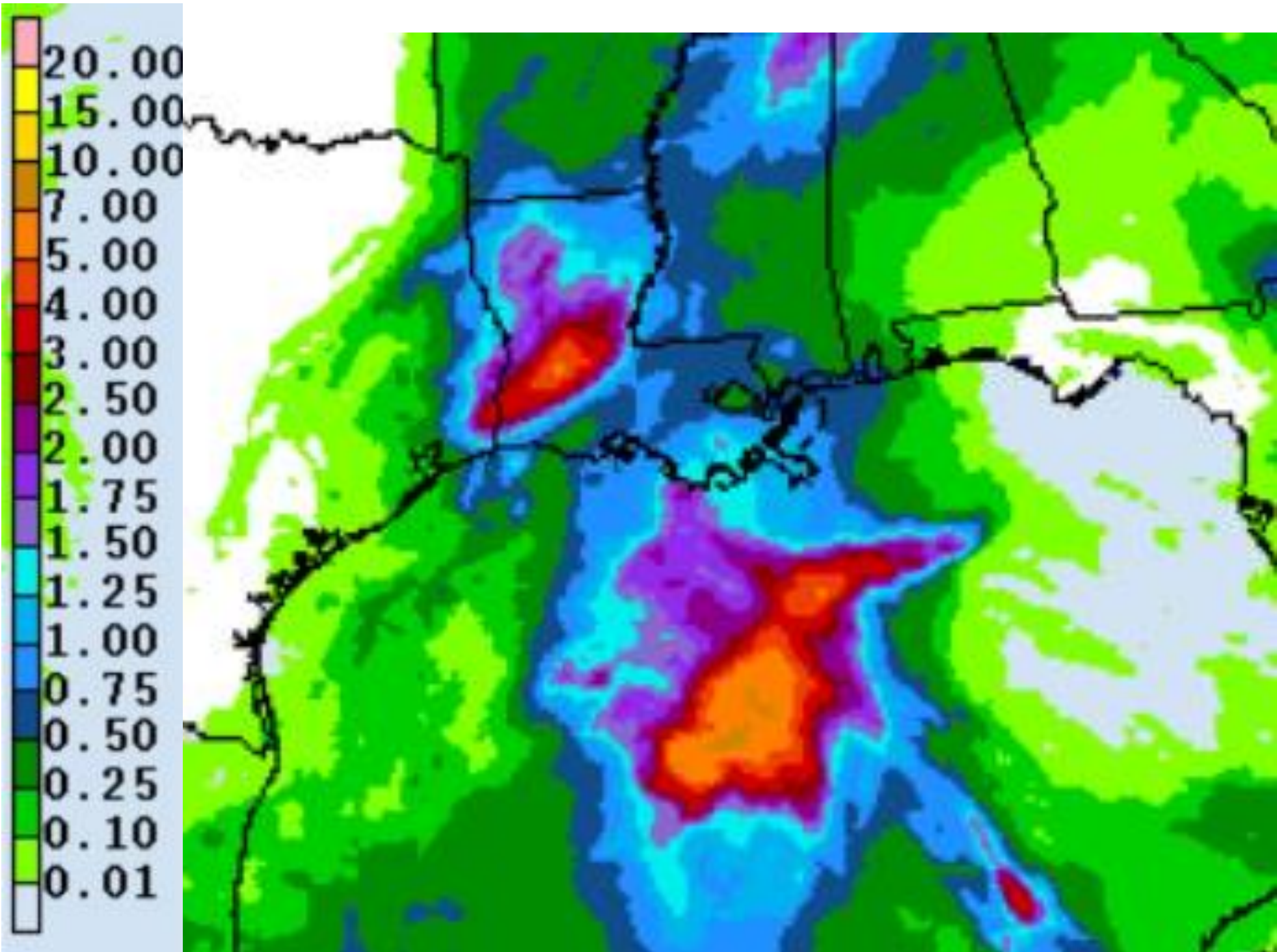


Tropical Analysis and Forecast Branch
NWS National Hurricane Center

Tropical Storm Rafael

Images from NWS Weather Prediction Center

Rainfall flooding threat due to very slow moving cold front (through Monday)



* Rainfall amounts through Monday night



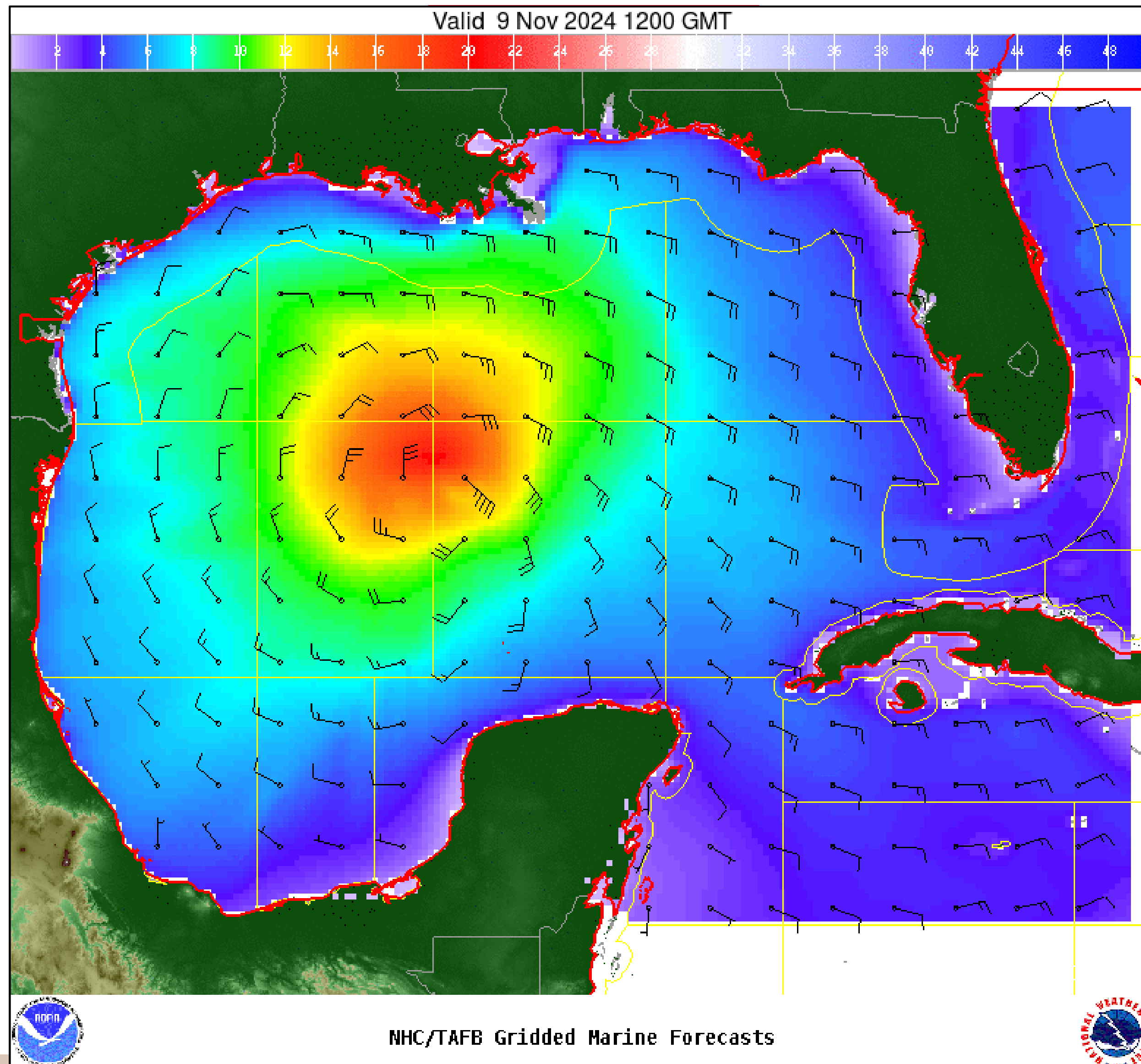
* Higher flood risk into tonight, then marginal continues into Monday

Wind And Waves

Tropical Storm Rafael



Tropical Analysis and Forecast Branch
NWS National Hurricane Center



Current Conditions through Today
(6 AM CST Saturday)

Peak Winds: 45 KT

Peak Seas: 20 FT

Nearshore waters: E wind 20-25 kt, seas 8 to 11 ft

■ Wave heights are in feet



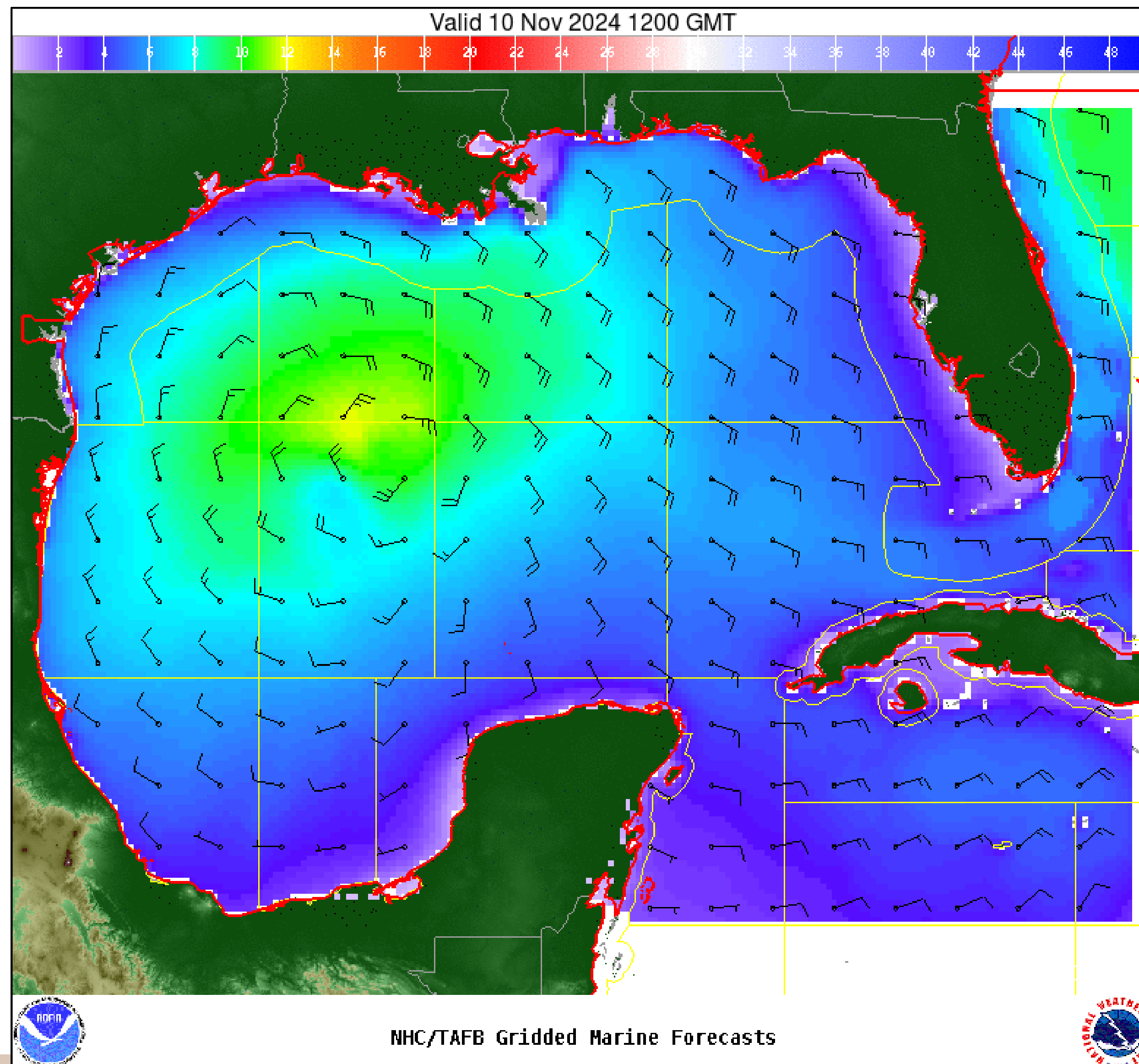
Significant Wave Height (ft)

Wind And Waves

Tropical Storm Rafael



Tropical Analysis and Forecast Branch
NWS National Hurricane Center



Sunday

(6 AM CST)

Peak Winds: 35 KT

Peak Seas: 14 FT

Nearshore waters: E wind 20-25 kt, seas 6 to 9 ft

- Wave heights are in feet



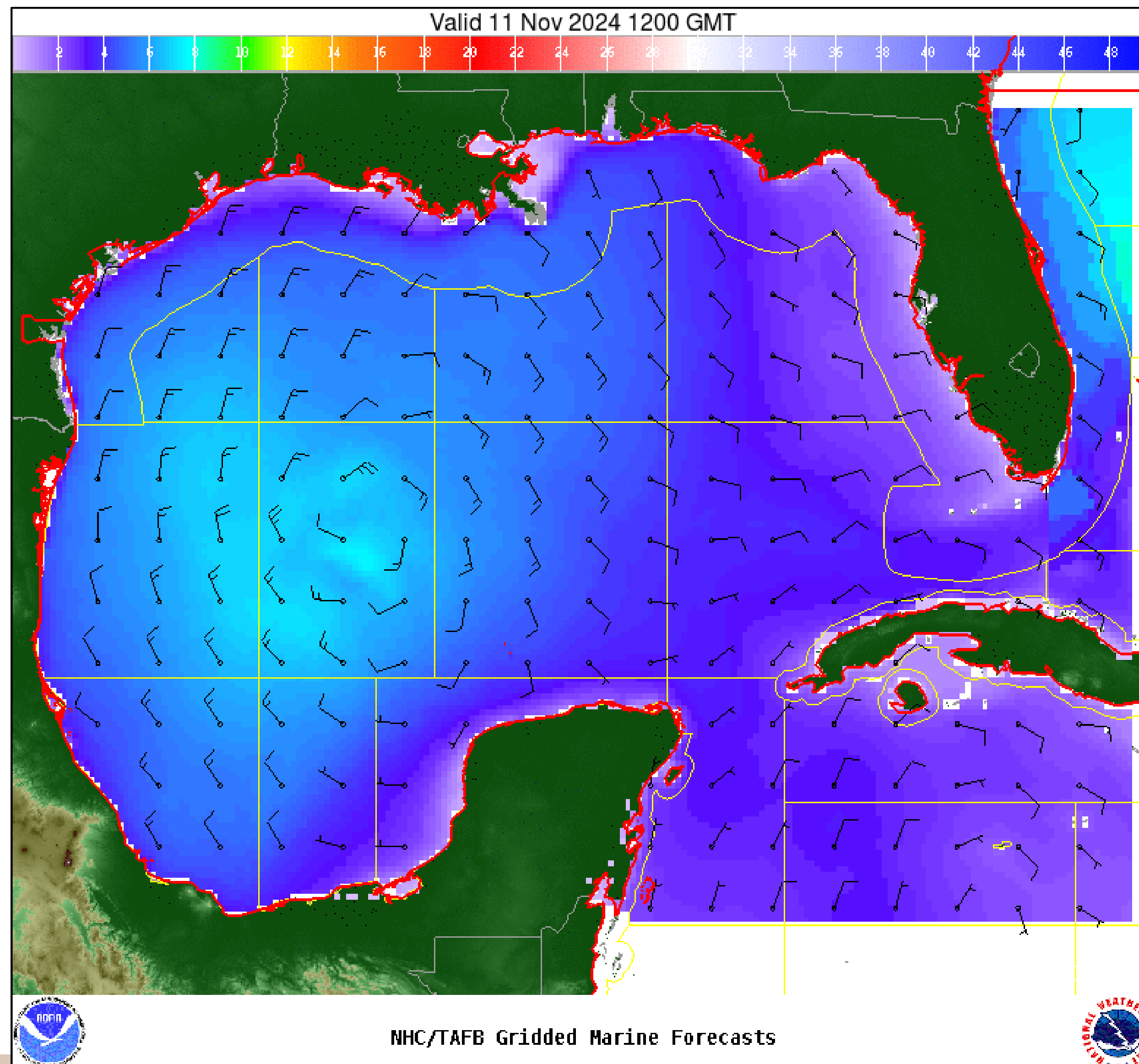
Significant Wave Height (ft)

Wind And Waves

Tropical Storm Rafael



Tropical Analysis and Forecast Branch
NWS National Hurricane Center



Monday

(6 AM CST)

Peak Winds: 30 KT

Peak Seas: 10 FT

Nearshore waters: Conditions improved –
winds less than 20 KT and seas less than 6 FT

■ Wave heights are in feet



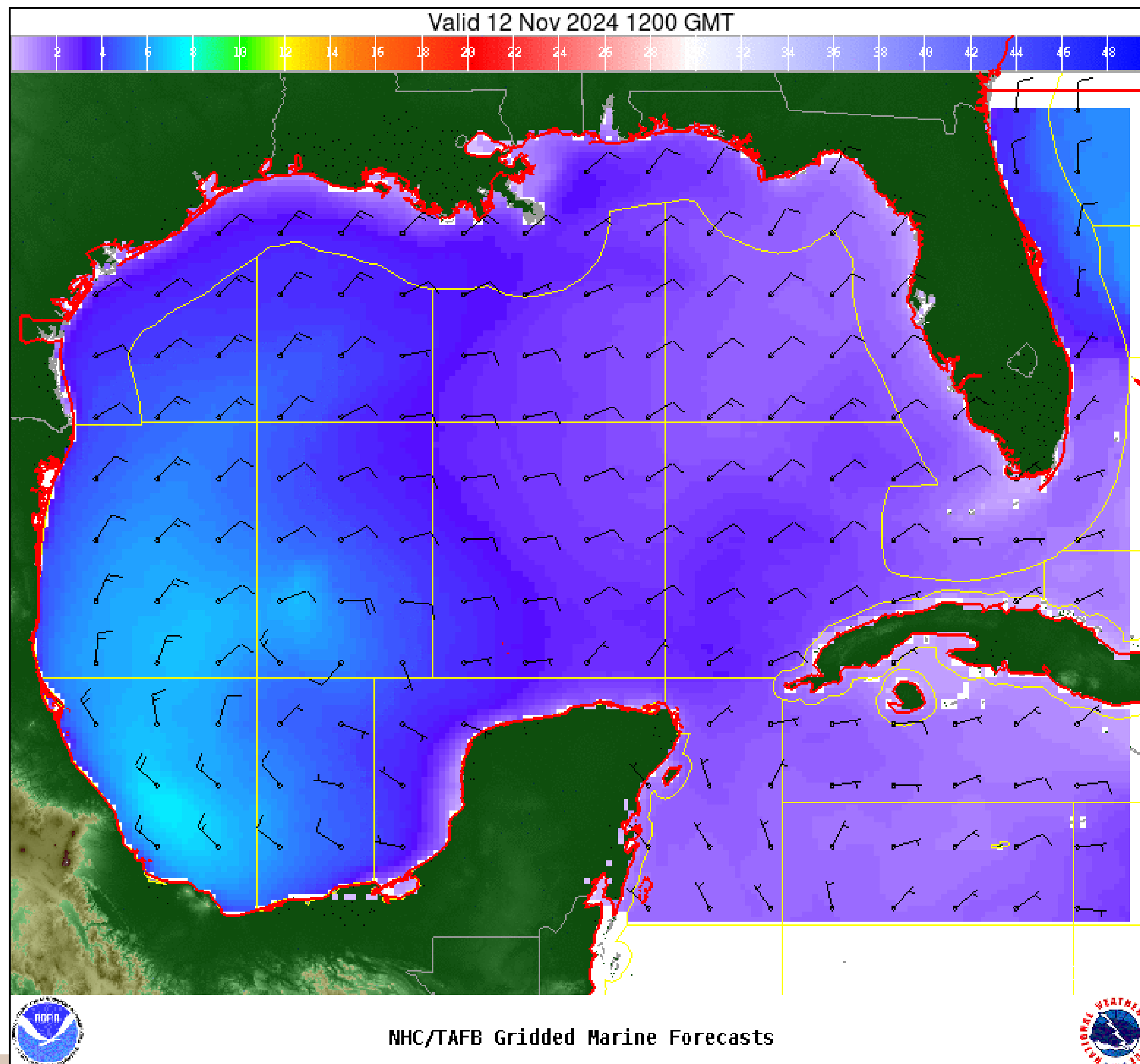
Significant Wave Height (ft)

Wind And Waves

Tropical Storm Rafael



Tropical Analysis and Forecast Branch
NWS National Hurricane Center



Tuesday

(6 AM CST)

Peak Winds: 25 KT

Peak Seas: 8 FT

- Wave heights are in feet



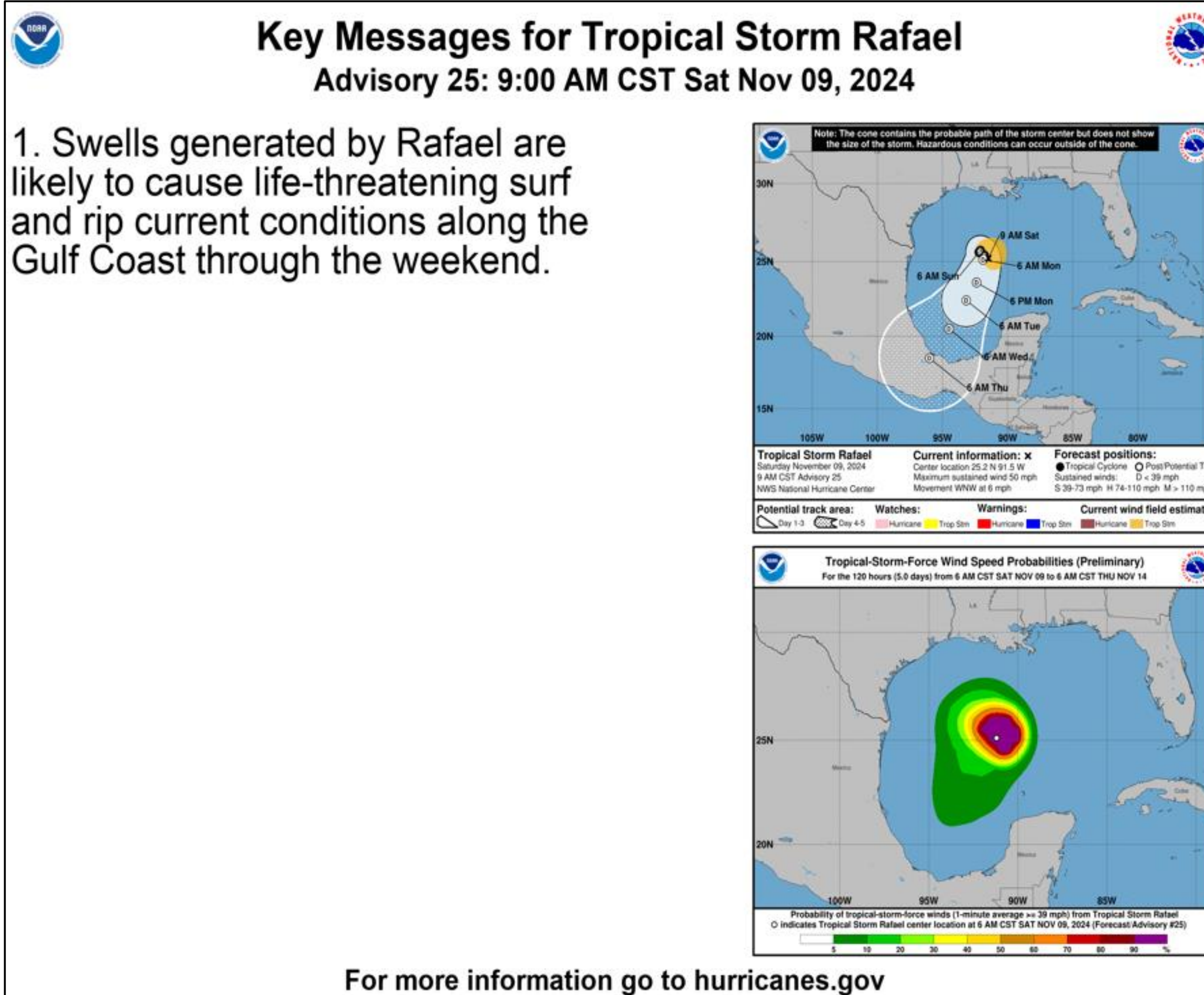
Significant Wave Height (ft)

Key Messages

Tropical Storm Rafael



Tropical Analysis and Forecast Branch
NWS National Hurricane Center



- **Marine Key Messages:**

- Winds to 40 KT and seas to 20 FT in central Gulf currently; will diminish through the weekend
- Hazardous conditions for small craft and beachgoers along the coast this weekend
 - Winds to 20 to 25 KT
 - Seas to 11 ft
 - Minor coastal flooding
- For details on localized near-shore conditions, contact National Weather Service Forecast Offices
 - weather.gov

IMPACTS FOR District 8

Winds/US Coast – None

Winds/SRR – High

Waves/US Coastal – Low

Waves/SRR – Moderate

US Rainfall/Flash Flooding – Low



**TIME of NEXT NHC Advisory:
21 UTC: 3 PM CST**

HURRICANE RAFAEL BRIEFING

You can contact the Tropical Analysis and Forecast Branch at
305-229-4424

This briefing was prepared by:

Stephen Konarik

Stephen.konarik@noaa.gov

You can always find get the latest graphics and information for this storm at www.hurricanes.gov



NHC_TAFB

www.nhc.noaa.gov