

IMPACTS FOR D8 (through next 5 days)

Winds – Medium

Storm Surge – High

Rainfall/Flash Flooding – Extreme

Tornadoes – Low

Waves - High

Tropical Storm Barry BRIEFING

9:00 AM CDT

Thursday, April 21, 2022

Prepared by:

TAFB FORECASTER

*Tropical Analysis and Forecast Branch
NWS National Hurricane Center*



NHC_TAF

B

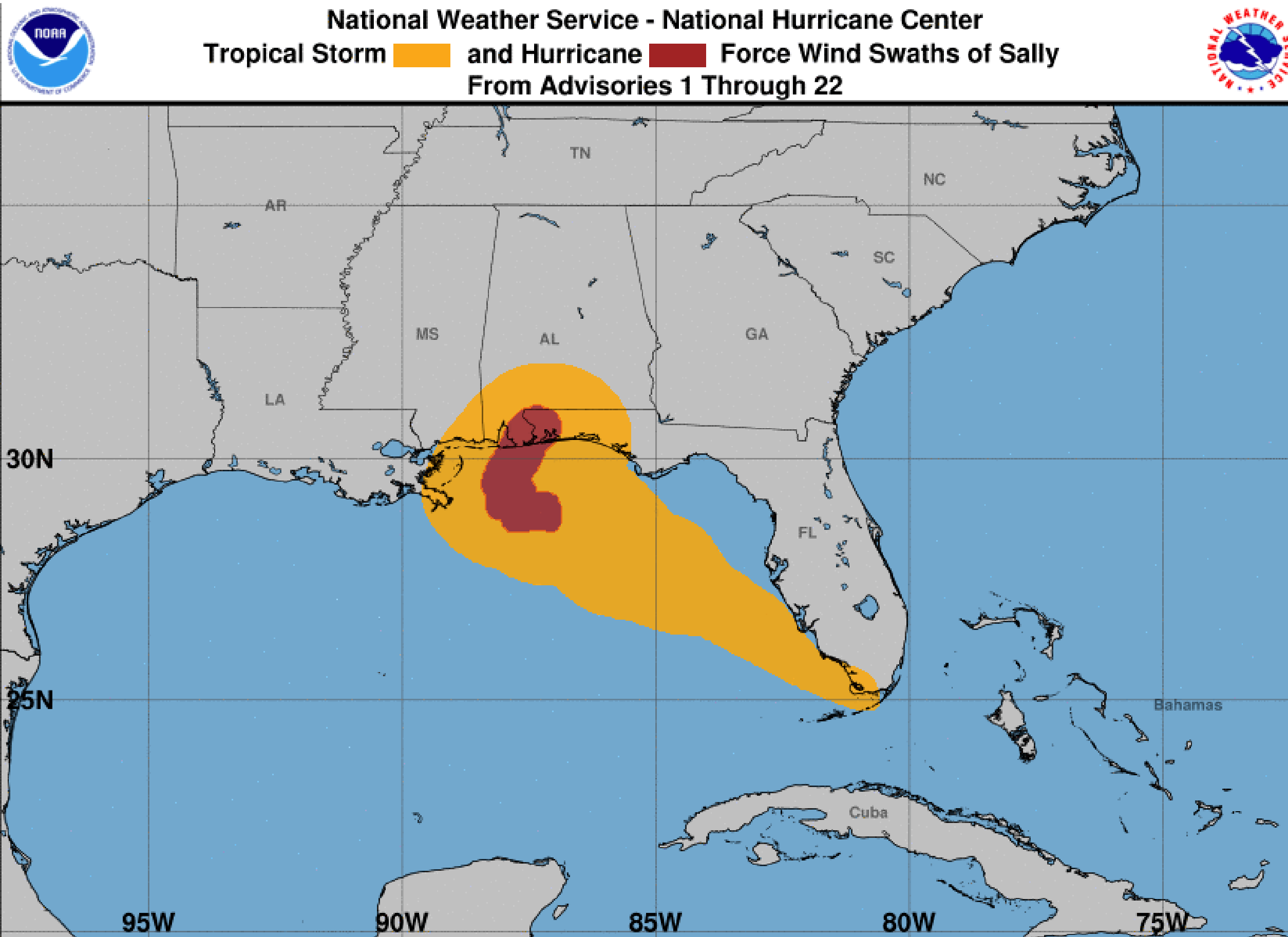
www.nhc.noaa.gov

Situation Overview

Tropical Storm Barry



Tropical Analysis and Forecast Branch
NWS National Hurricane Center



**...CATASTROPHIC AND LIFE-
THREATENING FLOODING OCCURRING
OVER PORTIONS OF THE FLORIDA
PANHANDLE AND SOUTHERN
ALABAMA...**

Summary of 1000 AM CDT Information

Location...30.9N 87.1W

About 25 nm NNE of Pensacola, Florida

Maximum Sustained Winds...60 kt

Present Movement...NNE at PRESENT

MOVEMENT...NNE 10 MPH

Minimum Central Pressure...982 MB

12 ft seas...0NE 120SE 75SW 0NW.

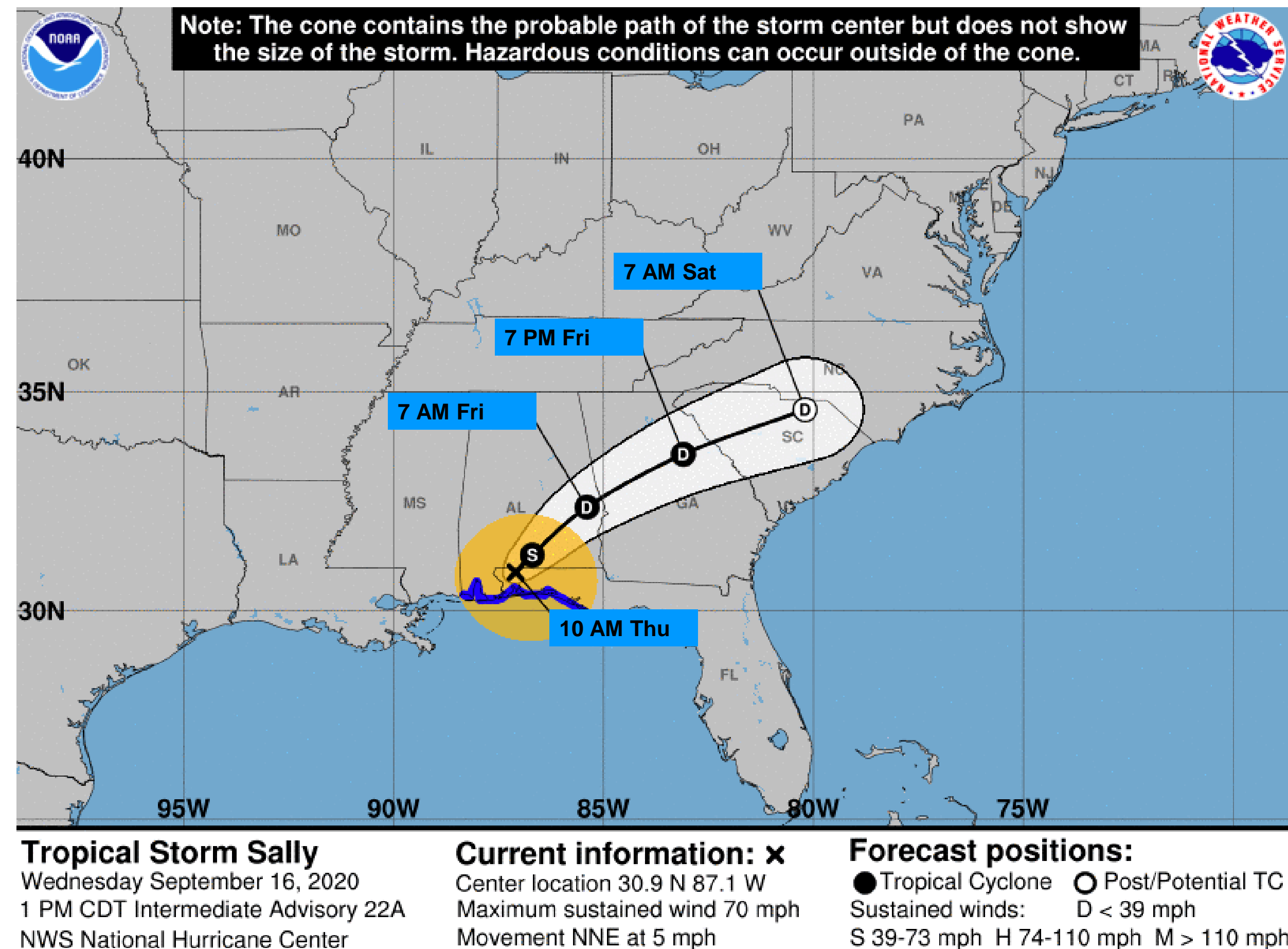
Peak Seas: 16 ft

Forecast Information

Tropical Storm Barry



Tropical Analysis and Forecast Branch
NWS National Hurricane Center



NOTE: Do not focus on the exact track. Impacts can occur well outside the area enclosed by the cone.

- **Barry continue to weaken overnight and become a depression by Friday morning**
- **The center of Barry will continue moving ENE toward the Carolinas through the weekend**

- Current center forecast positions through the next 5 days illustrated by dots
- White swath is potential track error through day 3
- Hatched swath is potential track error on days 4-5

** Swaths are designed so the actual track will occur inside the cone two-thirds of the time. One-third of the time, the center will track outside the cone.

T.S. Wind Speed Probabilities

Tropical Storm Barry

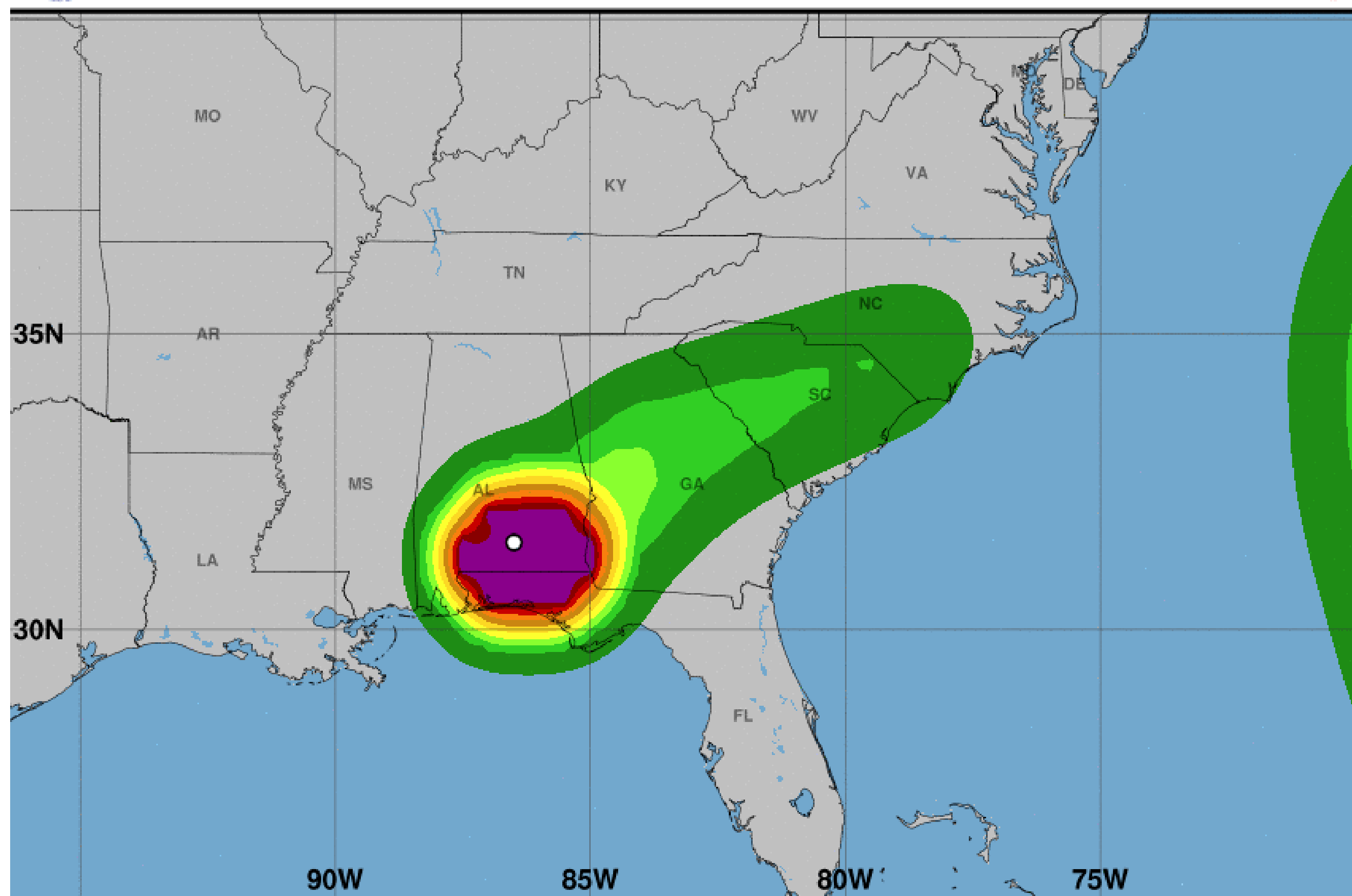


Tropical Analysis and Forecast Branch
NWS National Hurricane Center



Tropical-Storm-Force Wind Speed Probabilities

For the 120 hours (5.00 days) from 7 PM CDT WED SEP 16 to 7 PM CDT MON SEP 21



Probability of tropical-storm-force winds (1-minute average ≥ 39 mph) from all tropical cyclones

○ indicates Tropical Depression Sally center location at 7 PM CDT WED SEP 16, 2020 (Forecast/Advisory #24)



- **Pensacola, FL – 100%**

Probabilities of sustained tropical storm force winds (34 kt to 63 kt) over the next 5 days, based off this cyclone's wind radii and track.

Potential Storm Surge

Tropical Storm Barry



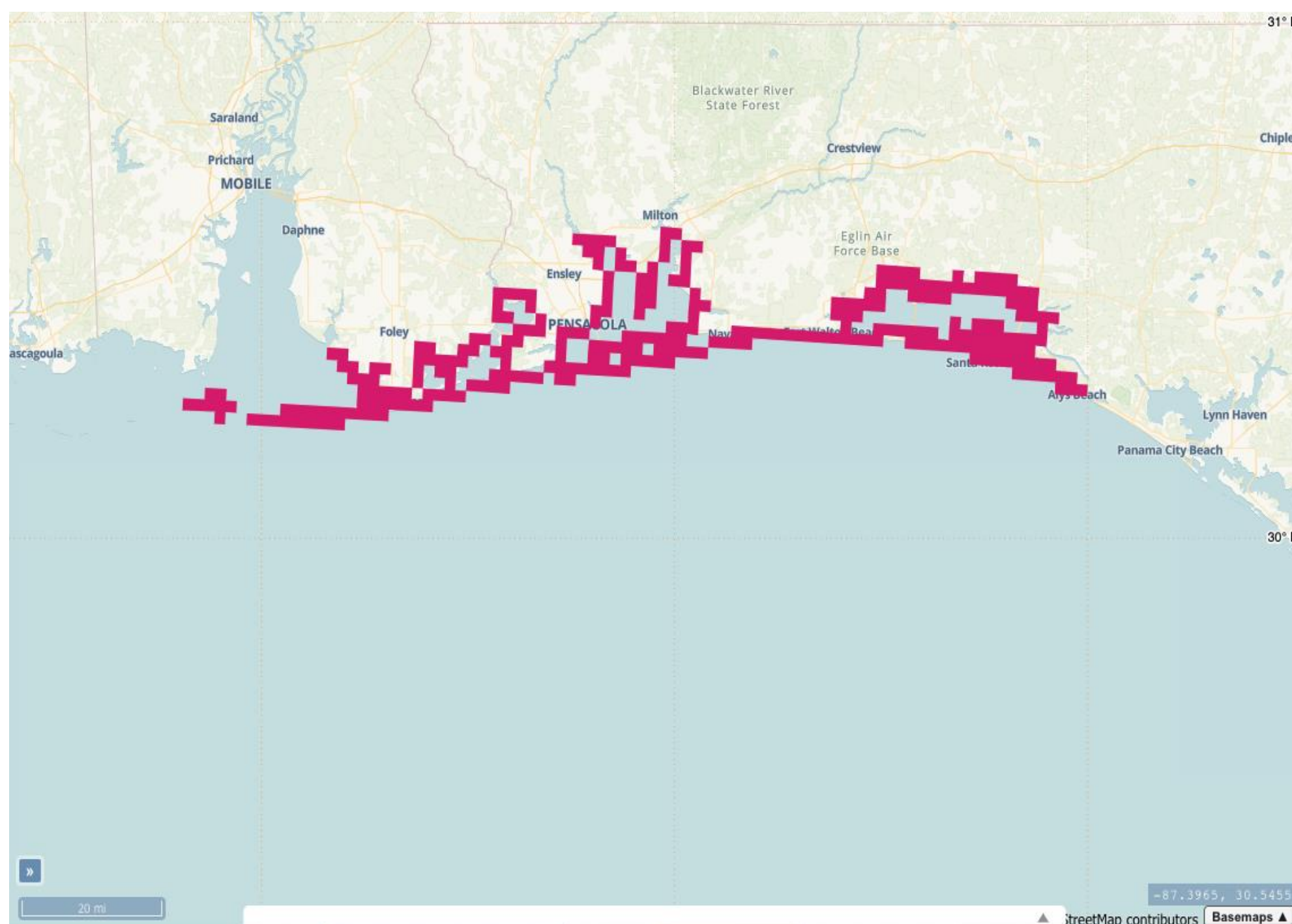
Tropical Analysis and Forecast Branch
NWS National Hurricane Center

A Storm Surge **Warning** is in effect for...

* Dauphin Island Alabama to the Walton/Bay County Line Florida

The combination of a dangerous storm surge and the tide will cause normally dry areas near the coast to be flooded by rising waters moving inland from the shoreline. The water could reach the following heights above ground somewhere in the indicated areas if the peak surge occurs at the time of high tide...

- -Dauphin Island to Santa Rosa/Okaloosa County Line, FL including Pensacola Bay and Choctawhatchee Bay... 6-9 ft
- -Santa Rosa/Okaloosa County Line to Walton Bay County Line, FL...4-6 ft
- -Dauphin Island, AL to Mouth Peral River including Bon Secour Bay...1-3 ft
- -Walton/Bay County Line, FL to Chassahowitzka, FL including Saint Andrew Bay...1-3 ft



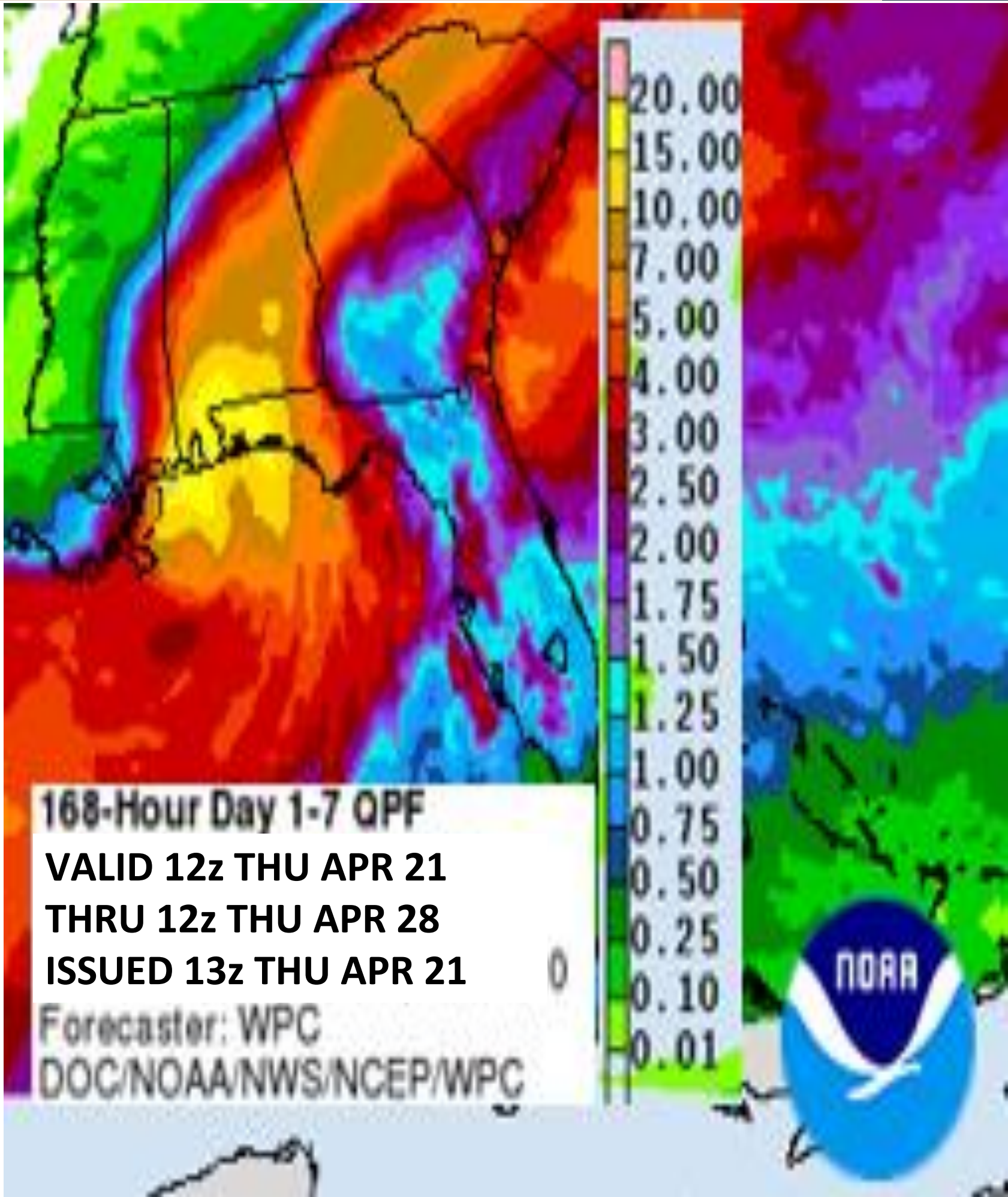
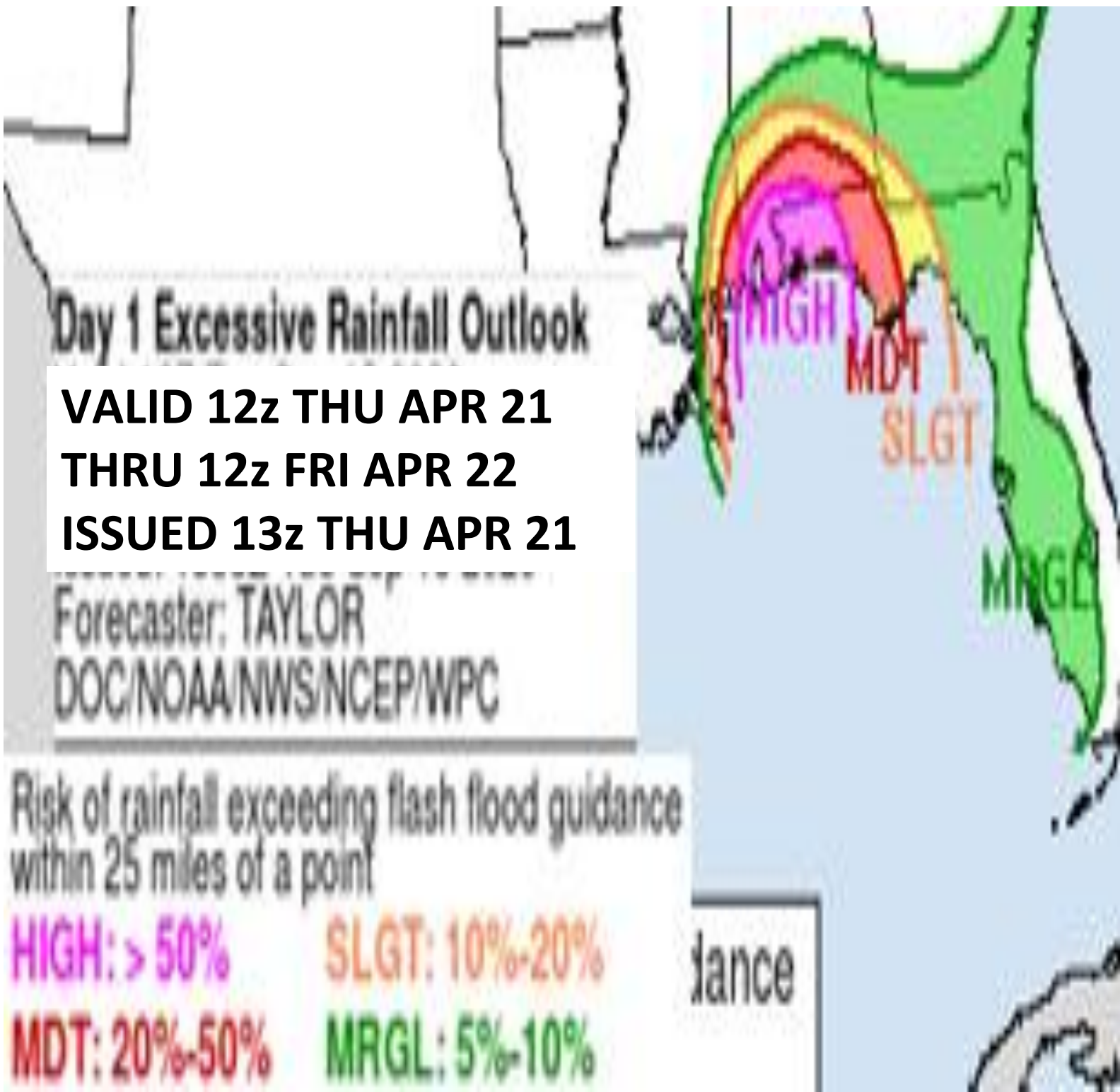
The deepest water will occur along the immediate coast in areas of onshore winds, where the surge will be accompanied by large and damaging waves. Surge-related flooding depends on the relative timing of the surge and the tidal cycle, and can vary greatly over short distances. For information specific to your area, please see products issued by your local National Weather Service forecast office.

Expected Storm Total Rainfall and Chance of Rainfall Flooding

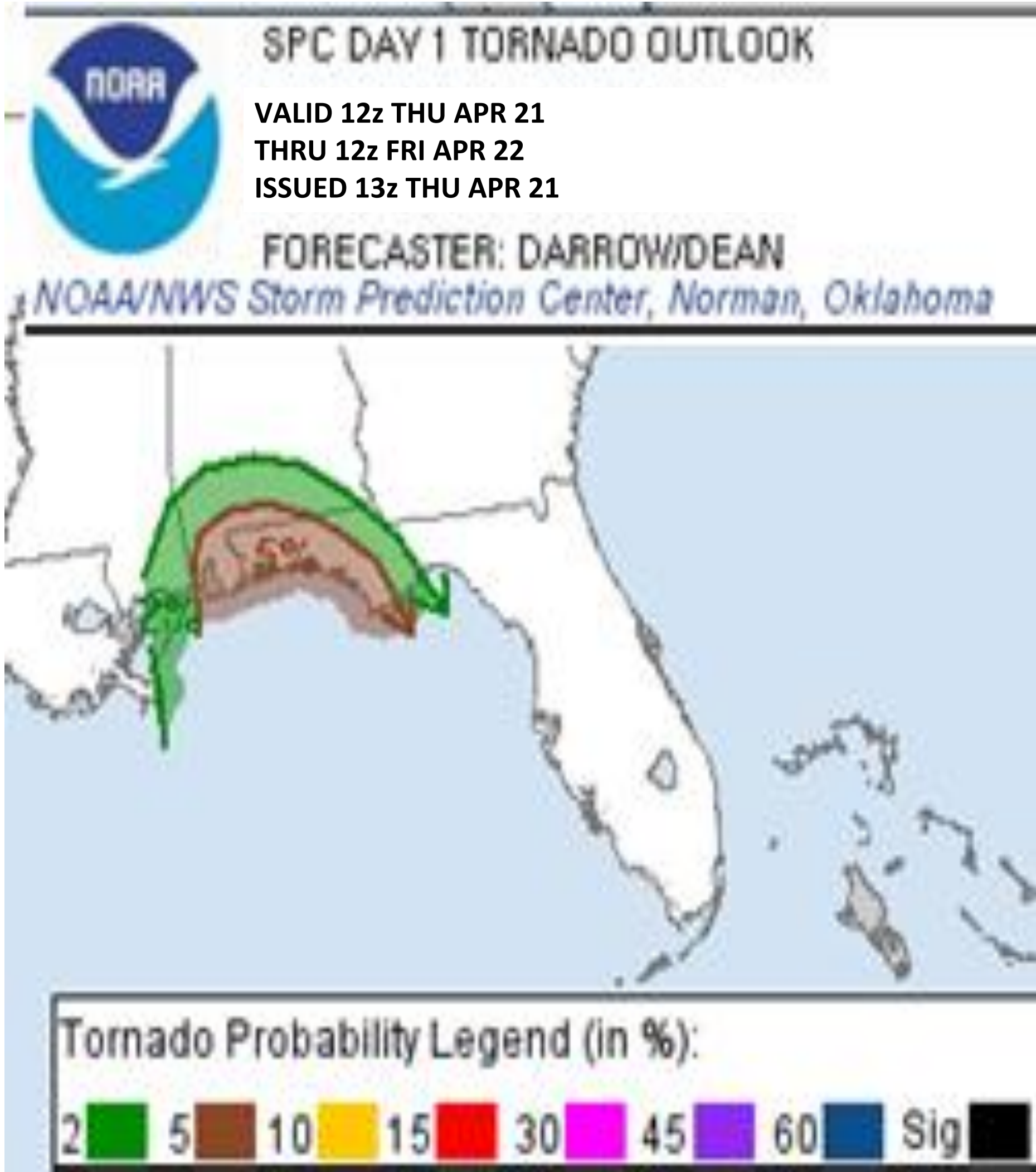


Tropical Analysis and Forecast Branch
NWS National Hurricane Center

Tropical Storm Barry



Through this afternoon, Barry will produce additional rainfall totals of 8 to 12 inches with localized higher amounts possible along and just inland of the central Gulf Coast from west of Tallahassee, Florida to Mobile Bay, Alabama. Storm totals of 10 to 20 inches to isolated amounts of 35 inches are expected. Historic and catastrophic flooding, including widespread moderate to major river flooding, is unfolding.





- **Marine Key Messages:**
- Seas will slowly come down along the central Gulf Coast and subside below 12 ft by Friday morning

IMPACTS FOR **D8** (through next 5 days)

Winds – Medium

Storm Surge – High

Rainfall/Flash Flooding – Extreme

Tornadoes – Low

Waves - High



BRIEFING

You can contact the Tropical Analysis and Forecast Branch at
305-229-4424

This is the last briefing

You can always find get the latest graphics and information for this storm at www.hurricanes.gov



NHC_TAF

B

www.nhc.noaa.gov