

IMPACTS FOR D8

Winds/US Coast – **Low** to **Medium**

Winds/SRR – **Low** to **Medium**

Waves/US Coastal – **Low** to **Medium**

Waves/SRR – **Low** to **Medium**

through next 5 days

US Storm Surge – **None**

US Rainfall/Flash Flooding – **Medium**

US Tornadoes – **Low**

INVEST 91L BRIEFING

11:00 AM CDT

Sunday, September 8, 2024

Prepared by:

Nelsie Ramos

*Tropical Analysis and Forecast Branch
NWS National Hurricane Center*



NHC_TAFB

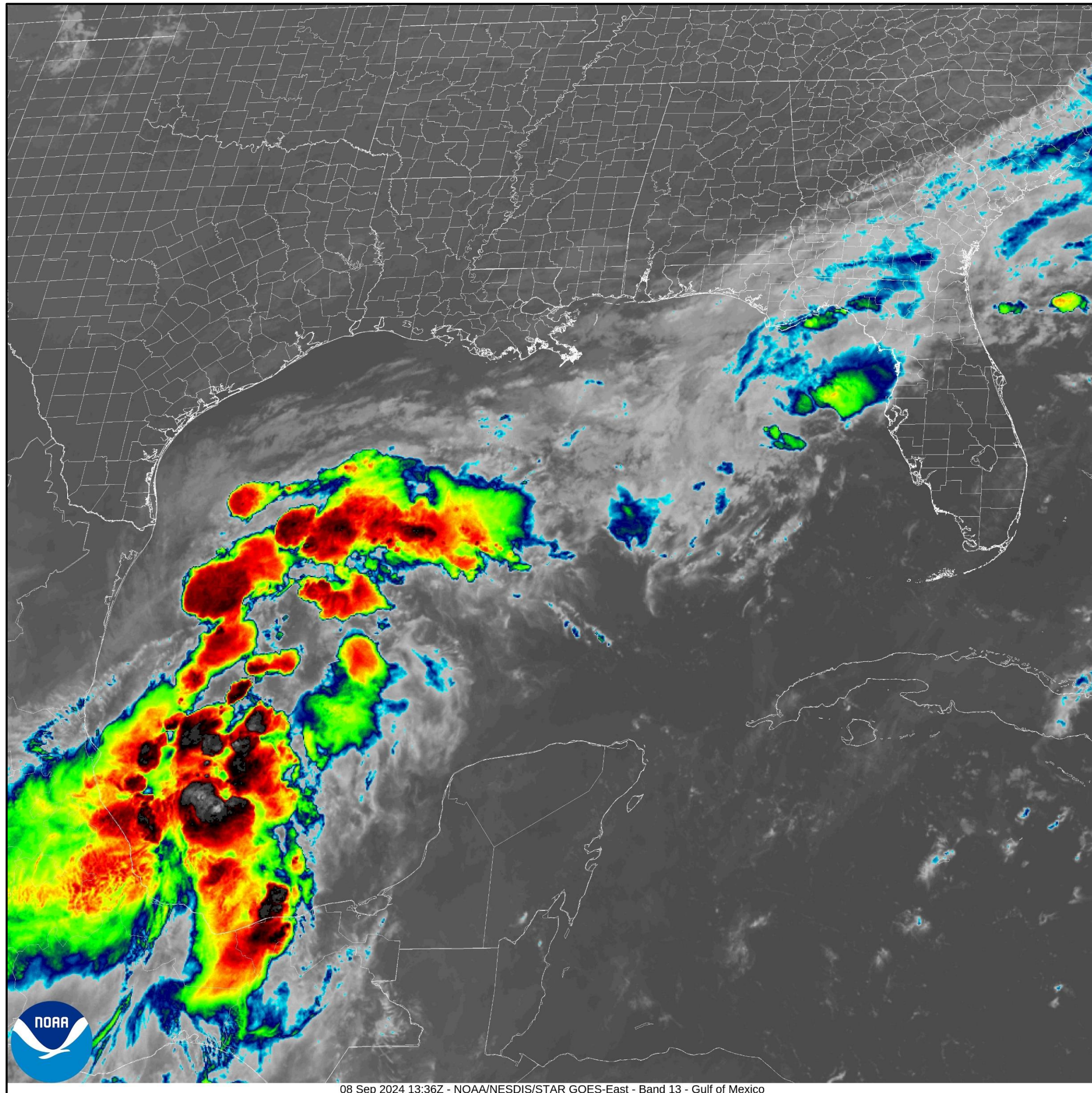
www.nhc.noaa.gov

Current Satellite View

Invest 91L



Tropical Analysis and Forecast Branch
NWS National Hurricane Center



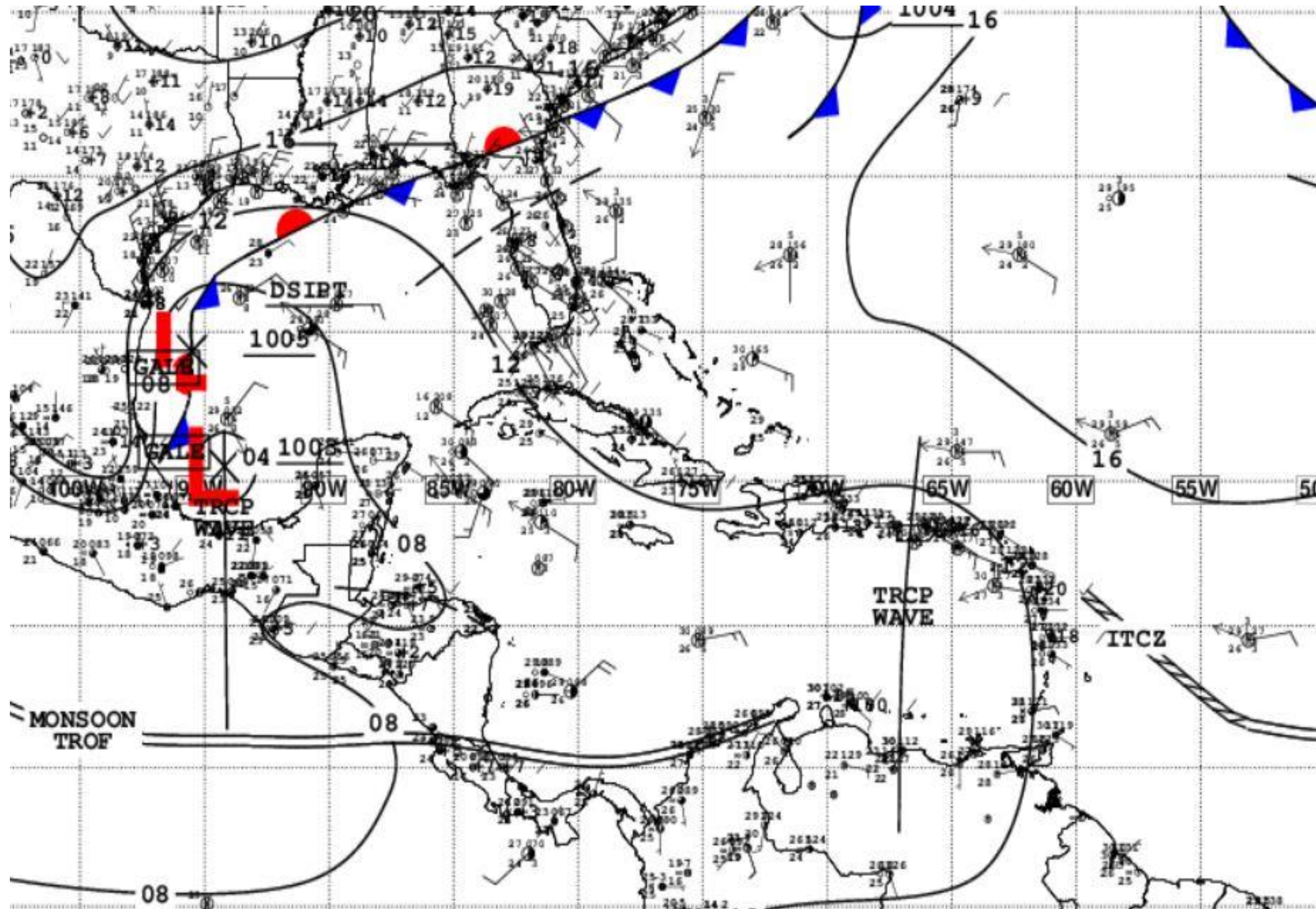
- Invest 91L located in the central Bay of Campeche near 20.5N 94.2W at 12 UTC
- Showers and thunderstorms have increased this morning in association with this system and chances of formation within the next 2 and 7 days is now high
- A TD is likely to form during the next couple of days as the system moves generally NW and then N near or along the Gulf coast of Mexico and Texas through the middle of the week.
- Watches could be required for portions of the western Gulf coast later today or tonight.
- An Air-Force Reserve Hurricane Hunter aircraft is scheduled to investigate the system later today.

Situation Overview

Invest 91L



Tropical Analysis and Forecast Branch
NWS National Hurricane Center



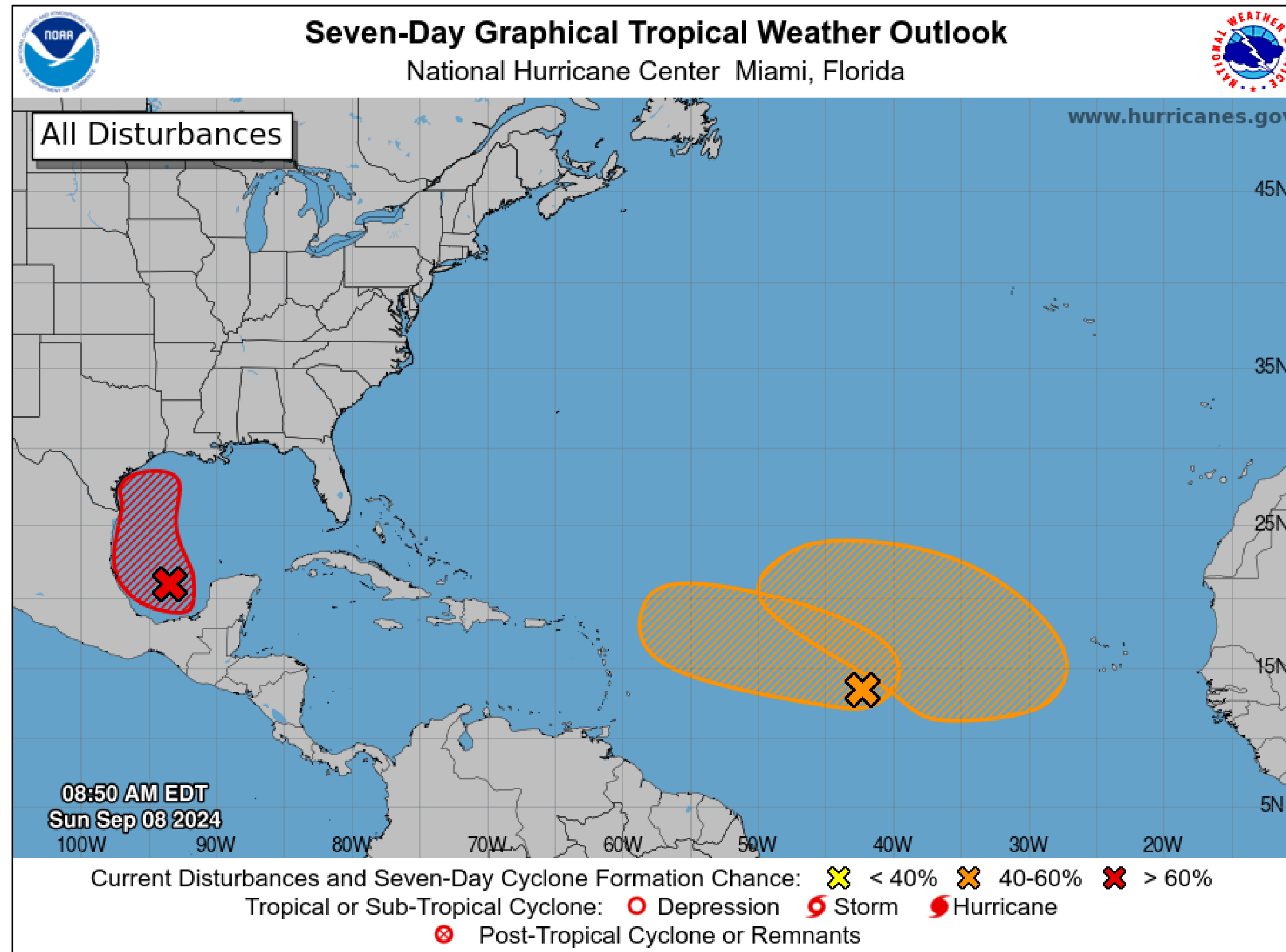
- Complex scenario with a stationary front just west of Invest 91L
- Gust to Gale force winds currently W of the frontal boundary and along the W Gulf W of 94W
- Very rough seas to 20 ft ongoing off Veracruz and to 17 ft over the central-eastern Mexican offshore waters

Tropical Weather Outlook

Invest 91L



Tropical Analysis and Forecast Branch
NWS National Hurricane Center



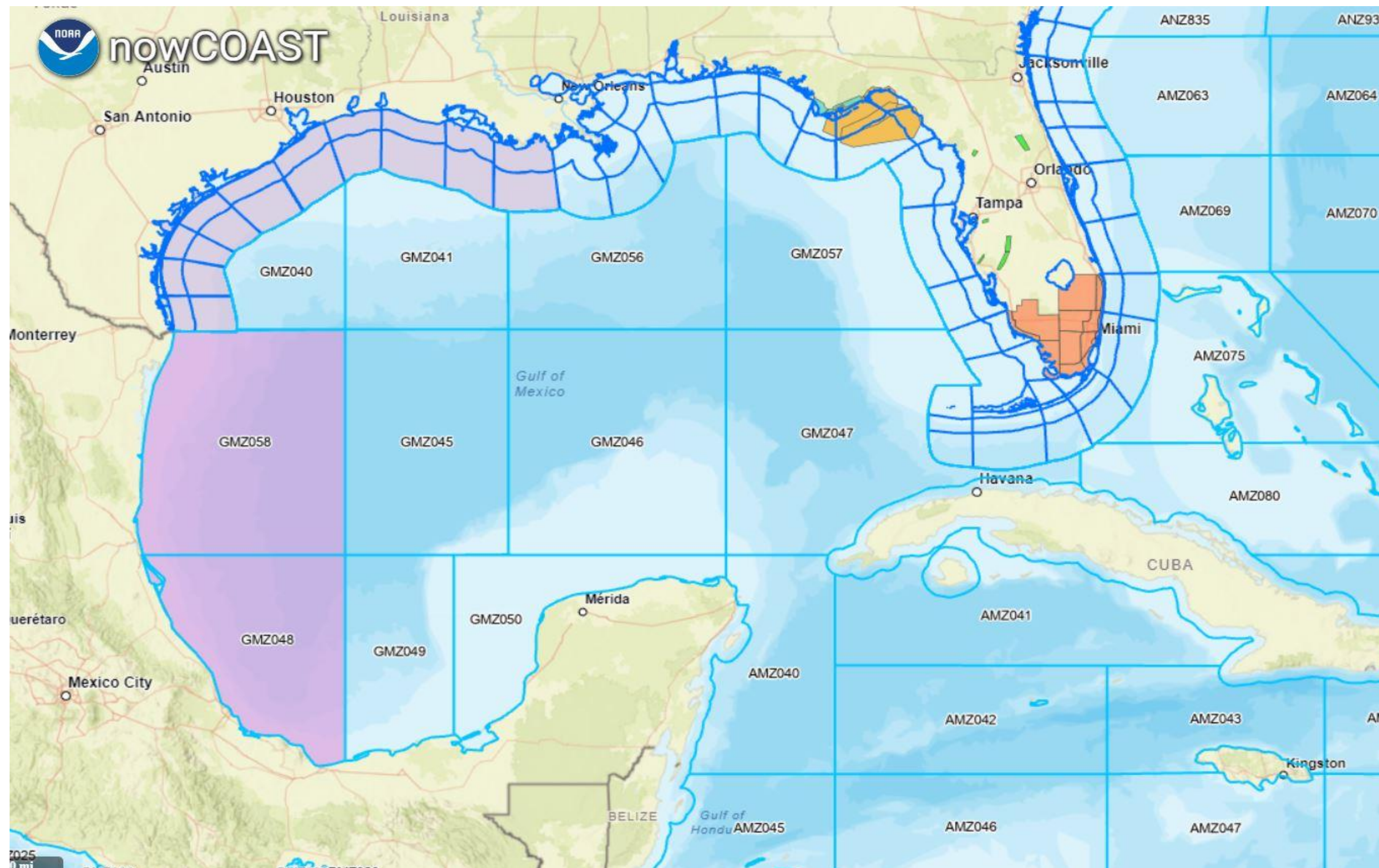
- **Red areas:** High risk of tropical formation through 7 days
- **Orange area:** Medium risk of tropical formation through 7 days
- Regardless of 91L development, near gale to gale force winds will continue to affect the W Gulf of Mexico through Wed night
- **Reminder:** The hatched area represents a possible development area, not the system's path after development occurs.

Hazards Map

Invest 91L



Tropical Analysis and Forecast Branch
NWS National Hurricane Center

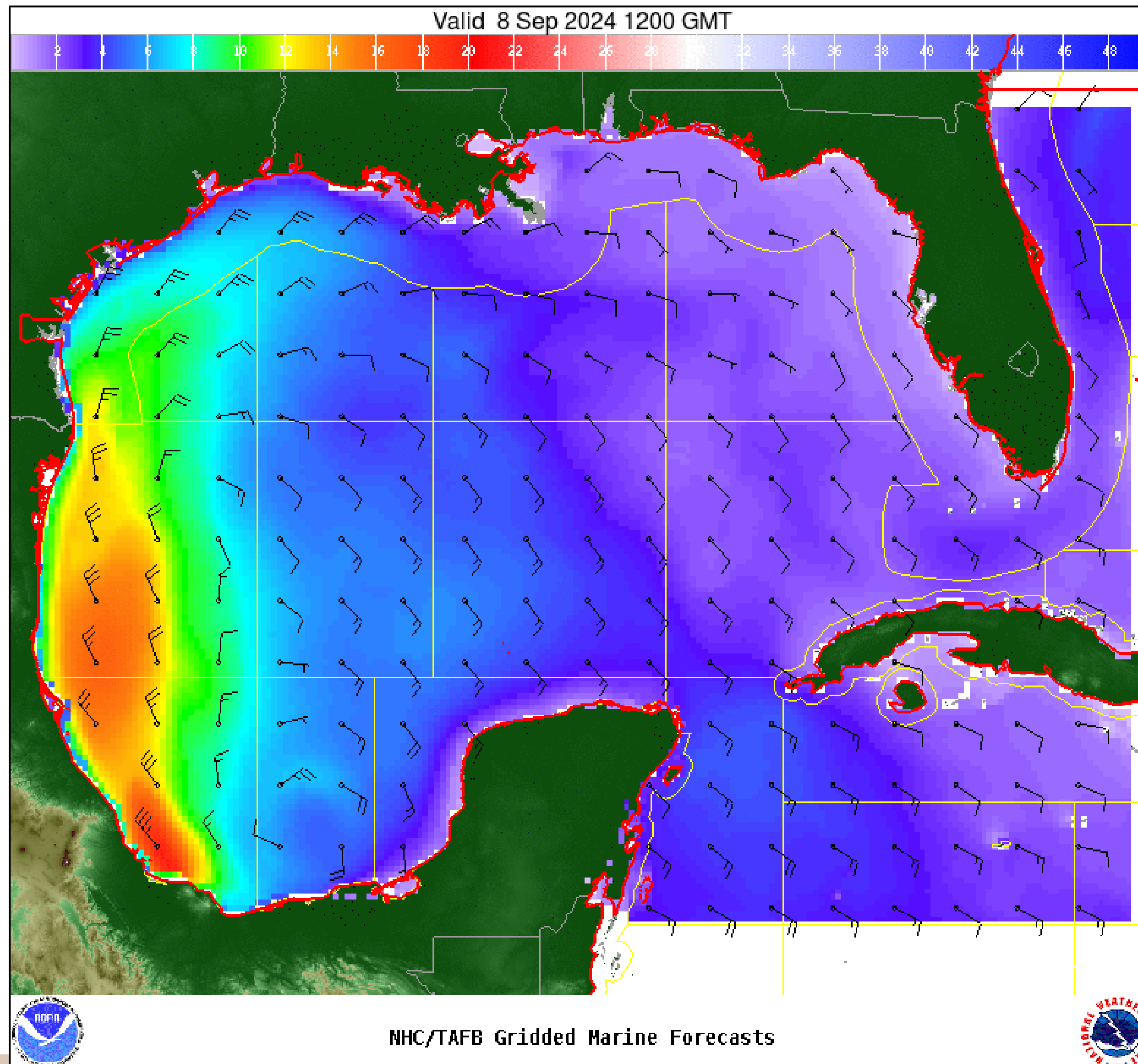


Wind And Waves

Invest 91L



Tropical Analysis and Forecast Branch
NWS National Hurricane Center



Current Conditions

Sunday Morning

Peak Winds: 30 kt

Peak Seas: 8 to 9 ft

■ Wave heights are in feet



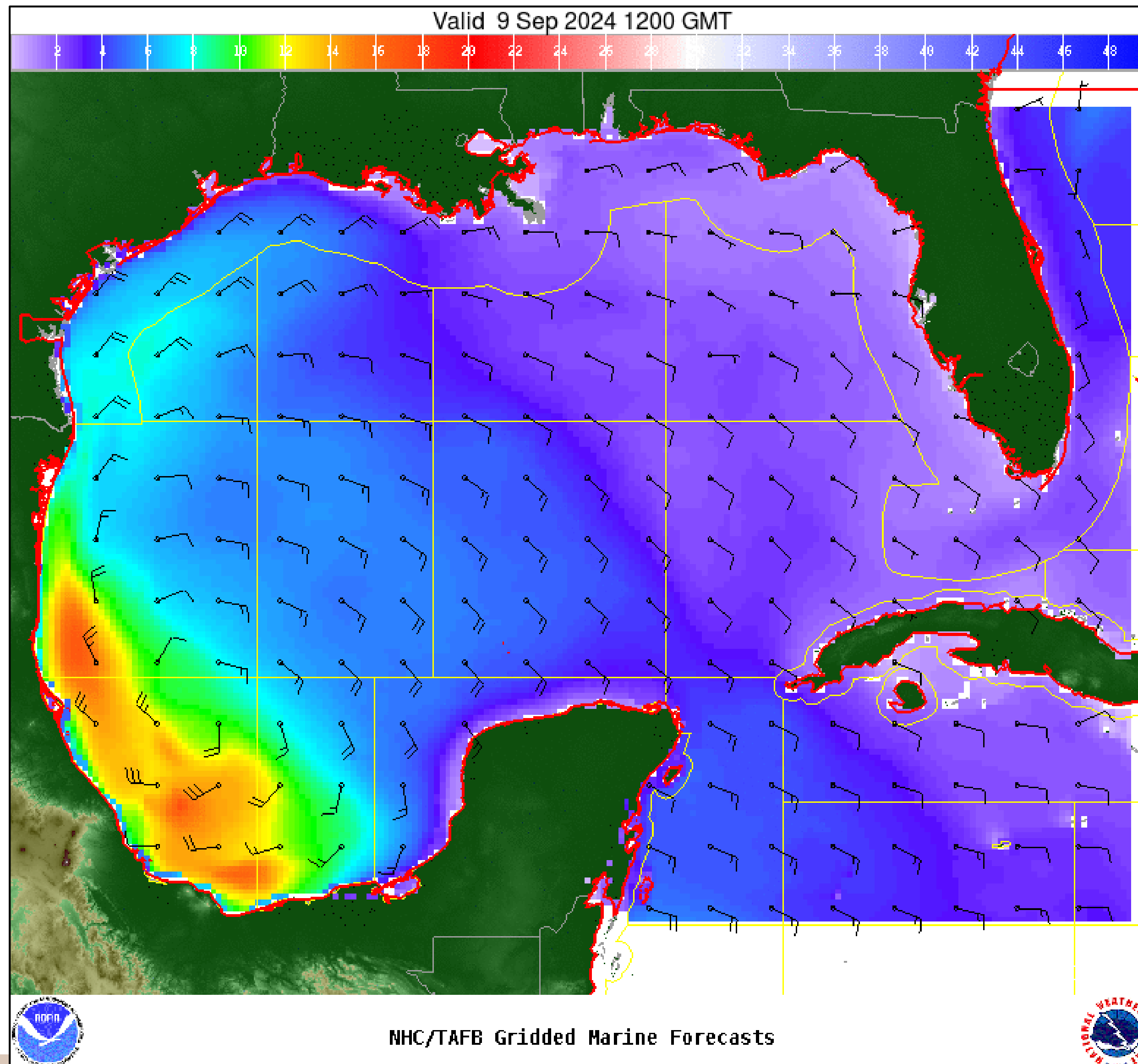
Significant Wave Height (ft)

Wind And Waves

Invest 91L



Tropical Analysis and Forecast Branch
NWS National Hurricane Center



24 Hour Forecast

Monday morning

Peak Winds: 35 kt

Peak Seas: 13 to 17 ft

- Wave heights are in feet



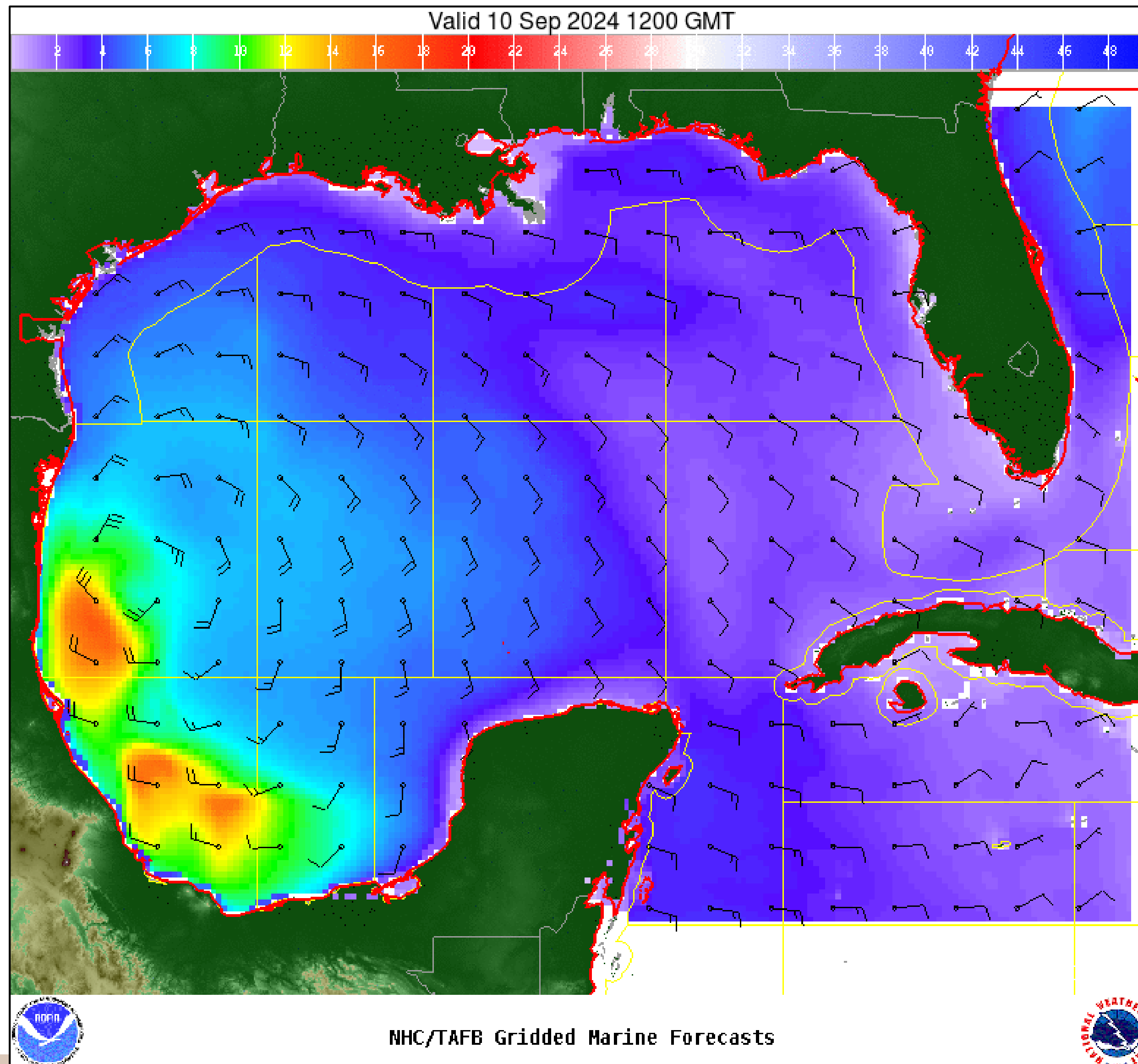
Significant Wave Height (ft)

Wind And Waves

Invest 91L



Tropical Analysis and Forecast Branch
NWS National Hurricane Center



48 Hour Forecast

Tuesday morning

Peak Winds: 40 kt

Peak Seas: 13 to 17 ft

■ Wave heights are in feet



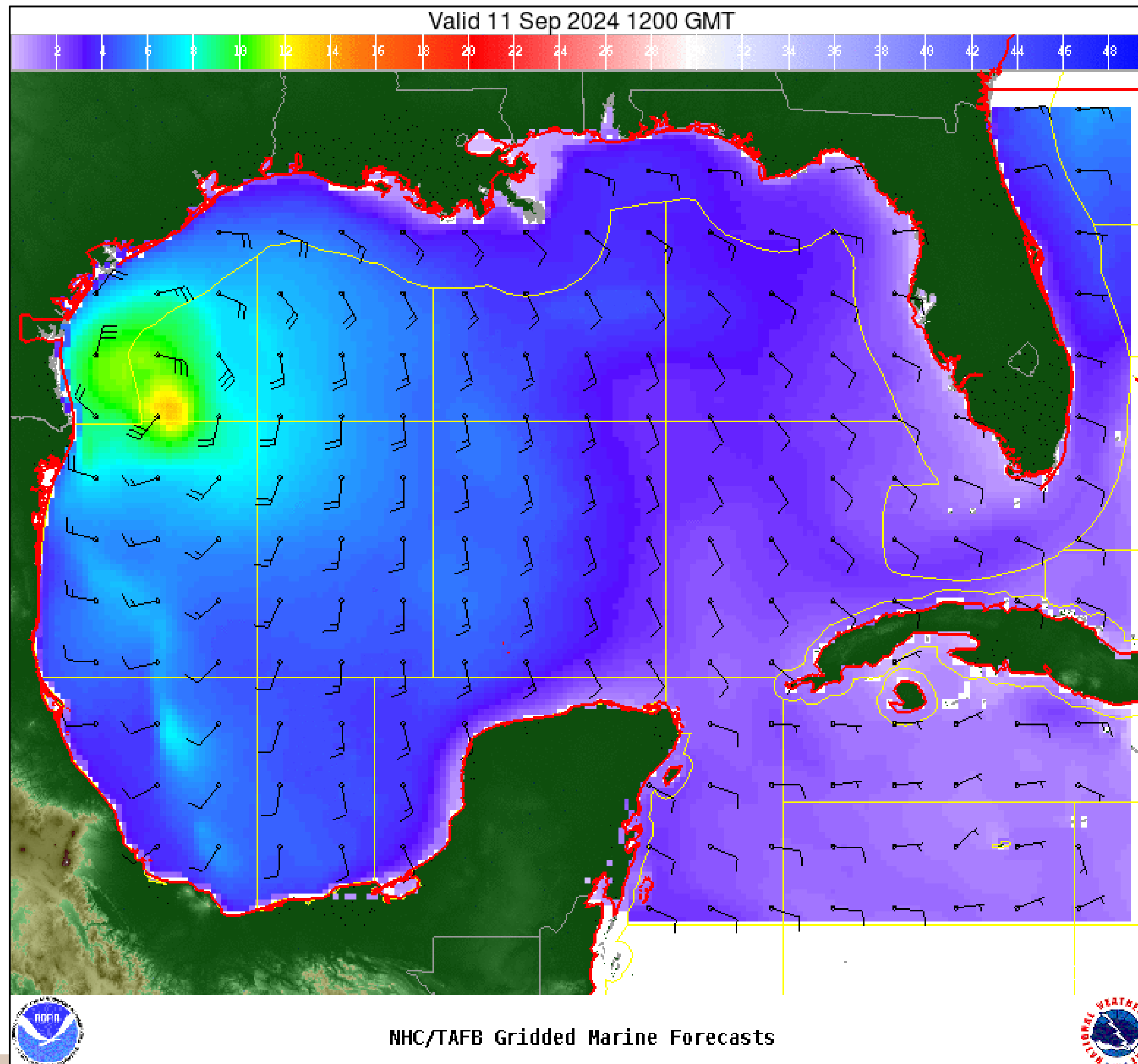
Significant Wave Height (ft)

Wind And Waves

Invest 91L



Tropical Analysis and Forecast Branch
NWS National Hurricane Center



72 Hour Forecast

Wednesday morning

Peak Winds: 40 kt

Peak Seas: 19 ft

■ Wave heights are in feet



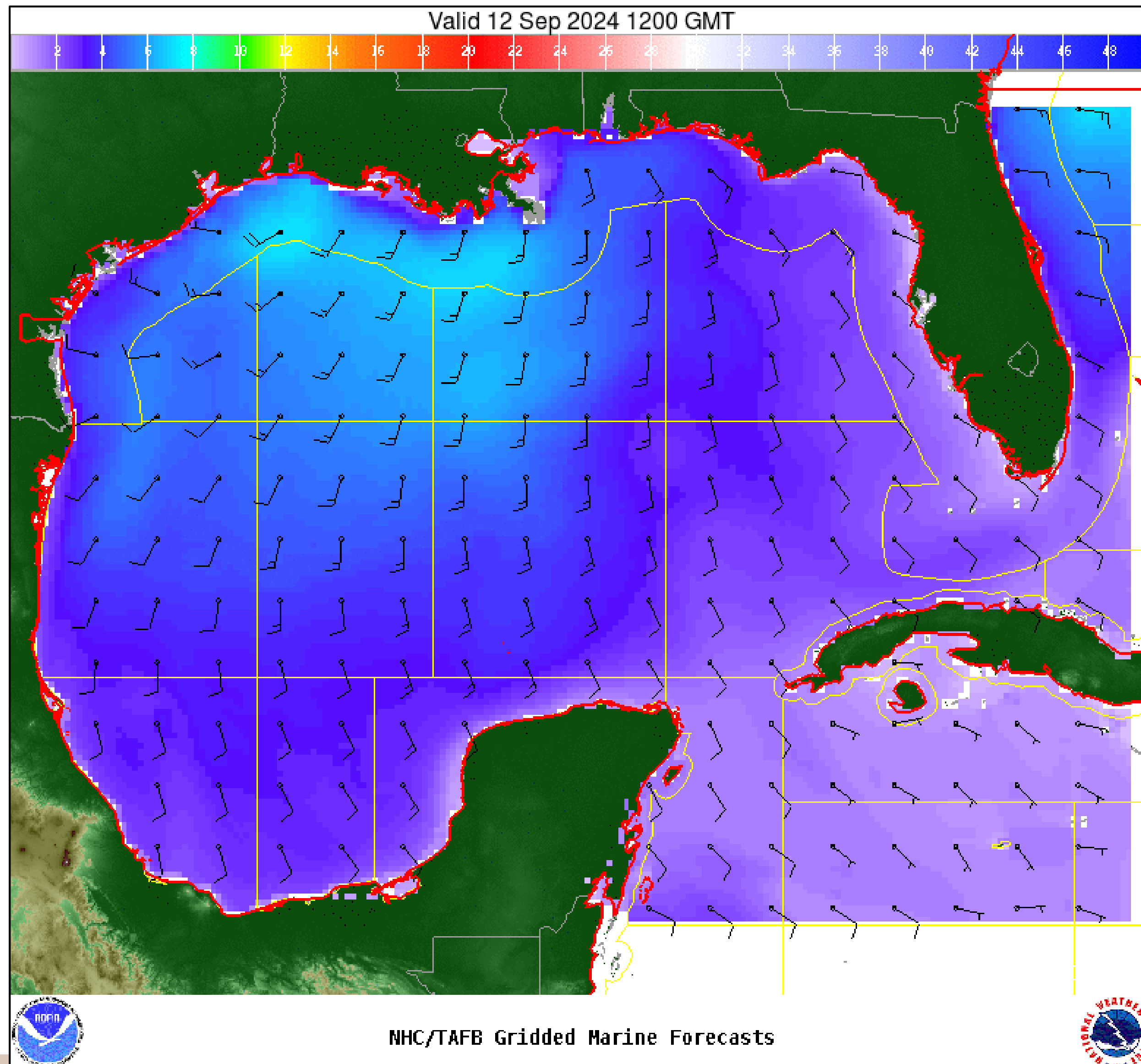
Significant Wave Height (ft)

Wind And Waves

Invest 91L



Tropical Analysis and Forecast Branch
NWS National Hurricane Center



96 Hour Forecast

Thursday morning

Peak Winds: 30 kt

Peak Seas: 8 ft

■ Wave heights are in feet



Significant Wave Height (ft)

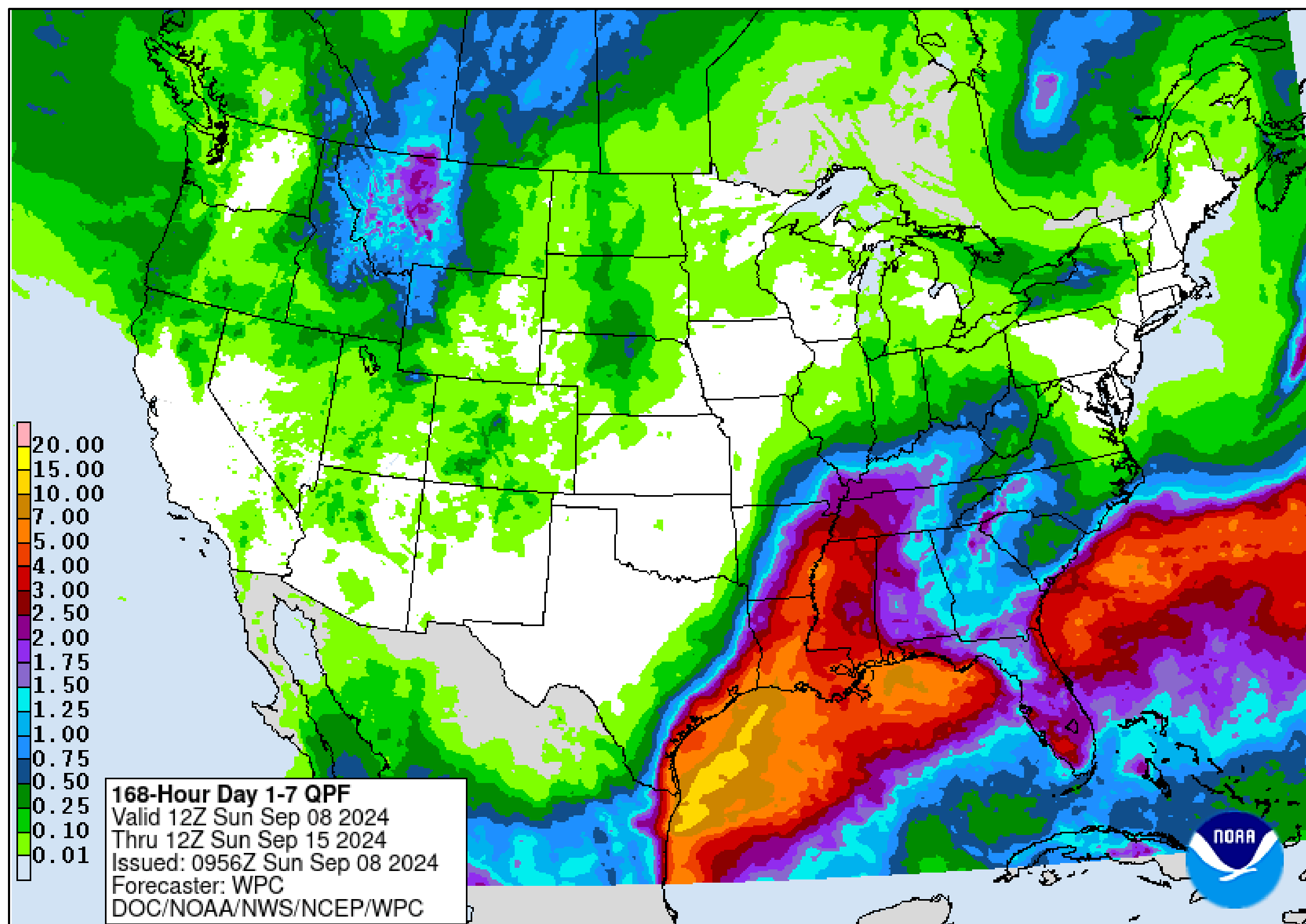
Expected Storm Total Rainfall and Chance of Rainfall Flooding



Tropical Analysis and Forecast Branch
NWS National Hurricane Center

Invest 91L

Images from NWS Weather Prediction Center



Marine Key Messages:

- Heavy rainfall with accumulations 10 inches forecast for the northern Gulf
- Regardless of 91L development, near gale to gale force winds will continue to affect the W Gulf of Mexico through Wed night
- Potential tropical cyclone advisories starting this afternoon

Risk of rainfall exceeding flash flood guidance
within 25 miles of a point

HIGH: > 50% **SLGT: 10%-20%**
MDT: 20%-50% **MRGL: 5%-10%**



You can contact the Tropical Analysis and Forecast Branch at 305-229-4424 (24/7/365)

This briefing was prepared by: Nelsie Ramos –
Nelsie.Ramos@noaa.gov

*The Next Briefing Will Be:
Monday at Noon EDT by
Keren Rosado - keren.rosado-vazquez@noaa.gov*

You can always find get the latest graphics and information for this storm at www.hurricanes.gov



NHC_TAFB

www.nhc.noaa.gov