

## IMPACTS FOR **D7**

Winds – **Low**

Storm Surge – **Low**

Rainfall/Flash Flooding - **Low**

Tornadoes – None

Waves - **Medium**

# TROPICAL STORM LAURA BRIEFING



9:00 AM EDT  
Sunday, August 23, 2020

Prepared by:  
**Chris Landsea**

*Tropical Analysis and Forecast Branch  
NWS National Hurricane Center*



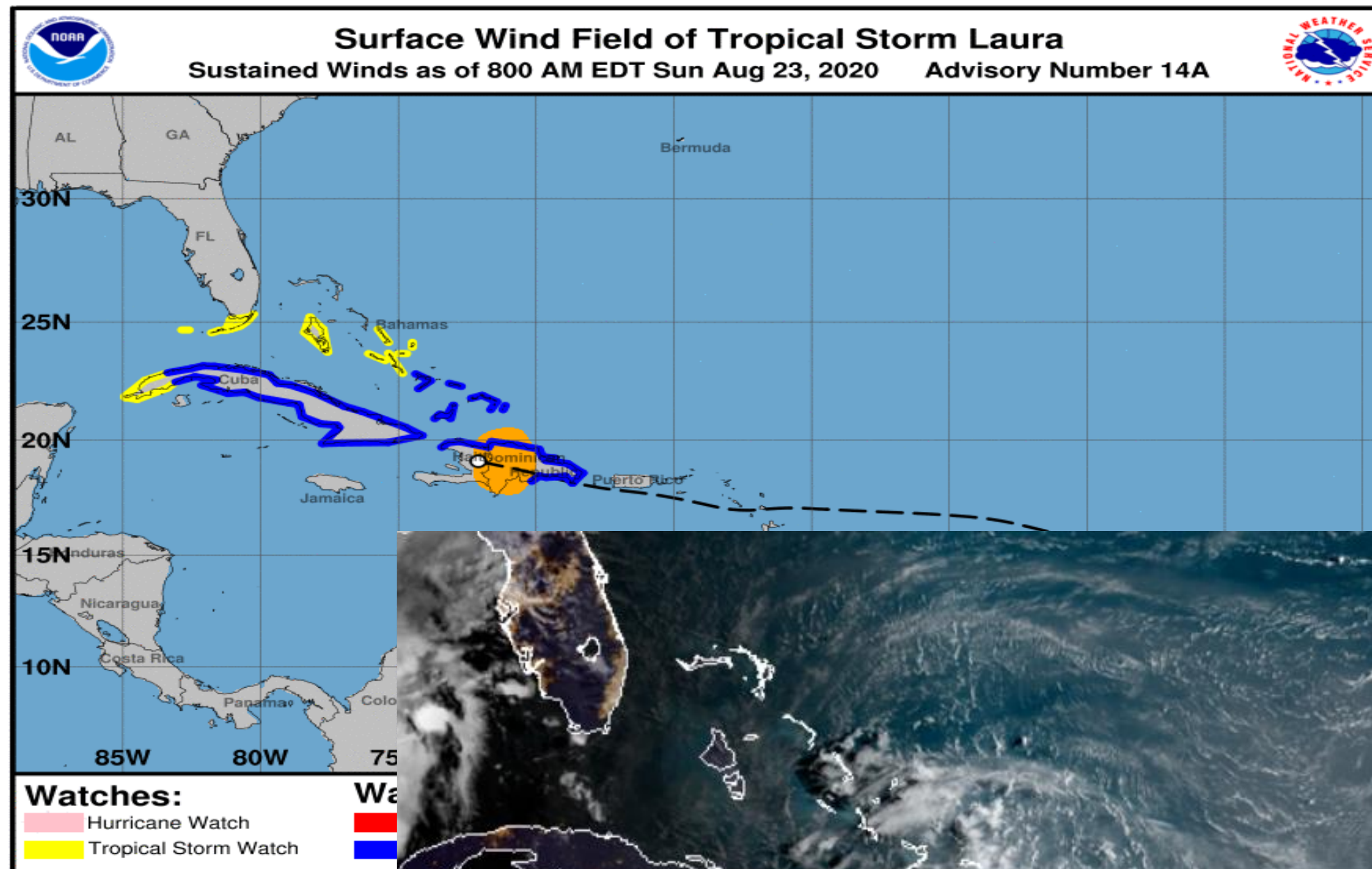


# Situation Overview

## Tropical Storm Laura



Tropical Analysis and Forecast Branch  
NWS National Hurricane Center



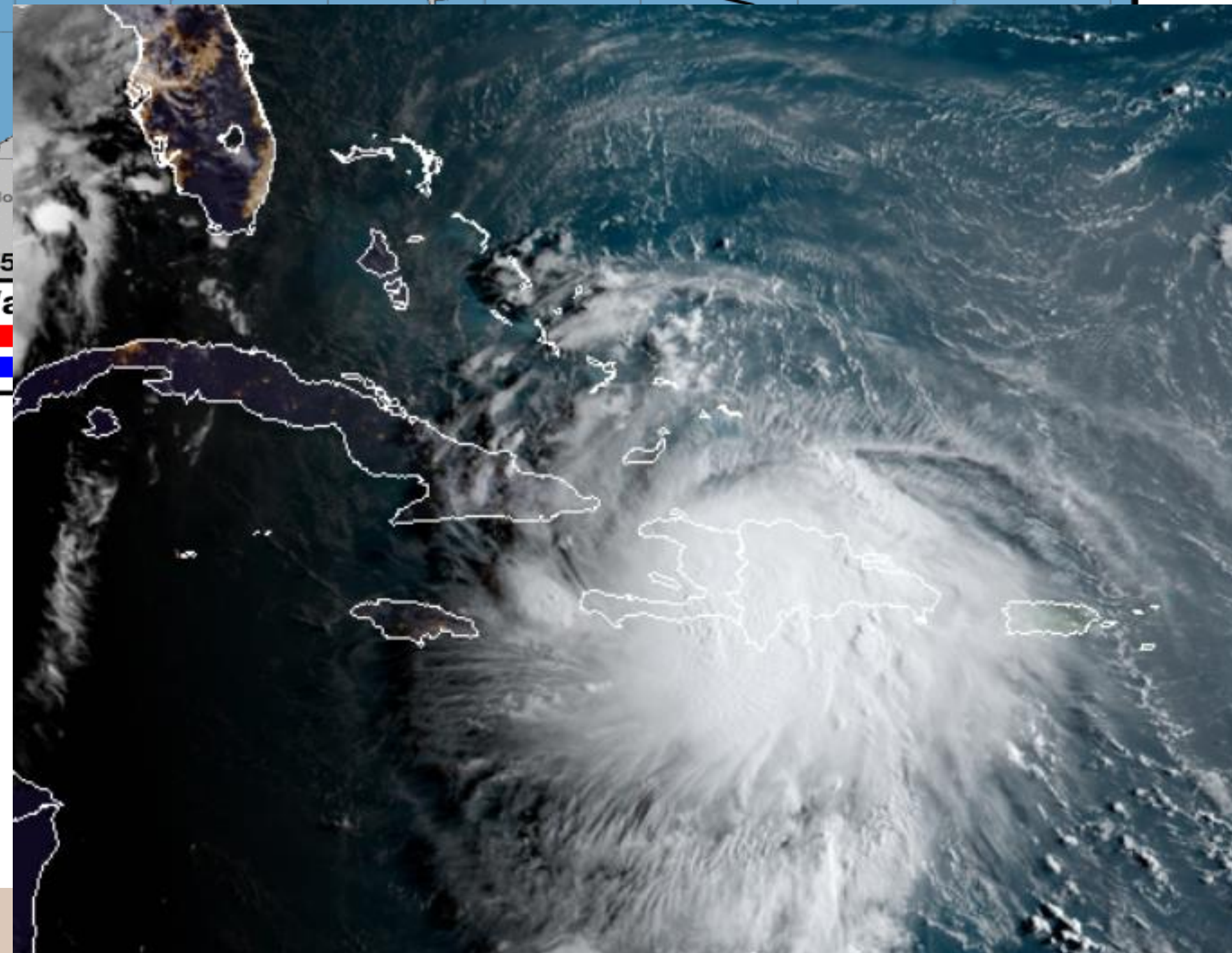
**...LAURA BRINGING TORRENTIAL RAINFALL AND LIFE-THREATENING FLOODING TO THE DOMINICAN REPUBLIC AND HAITI...**

### SUMMARY OF 800 AM EDT INFORMATION

LOCATION...19.1N 72.1W  
ABOUT 35 NM NNE OF PORT AU PRINCE HAITI  
ABOUT 40 NM S OF CAP HAITIEN HAITI  
MAXIMUM SUSTAINED WINDS...40 KT  
PRESENT MOVEMENT...WNW AT 16 KT

### SIZE (IN NM)

34 KT.....120NE 120SE 0SW 0NW.  
12 FT SEAS..210NE 0SE 0SW 210NW.  
PEAK SEAS 18 FT



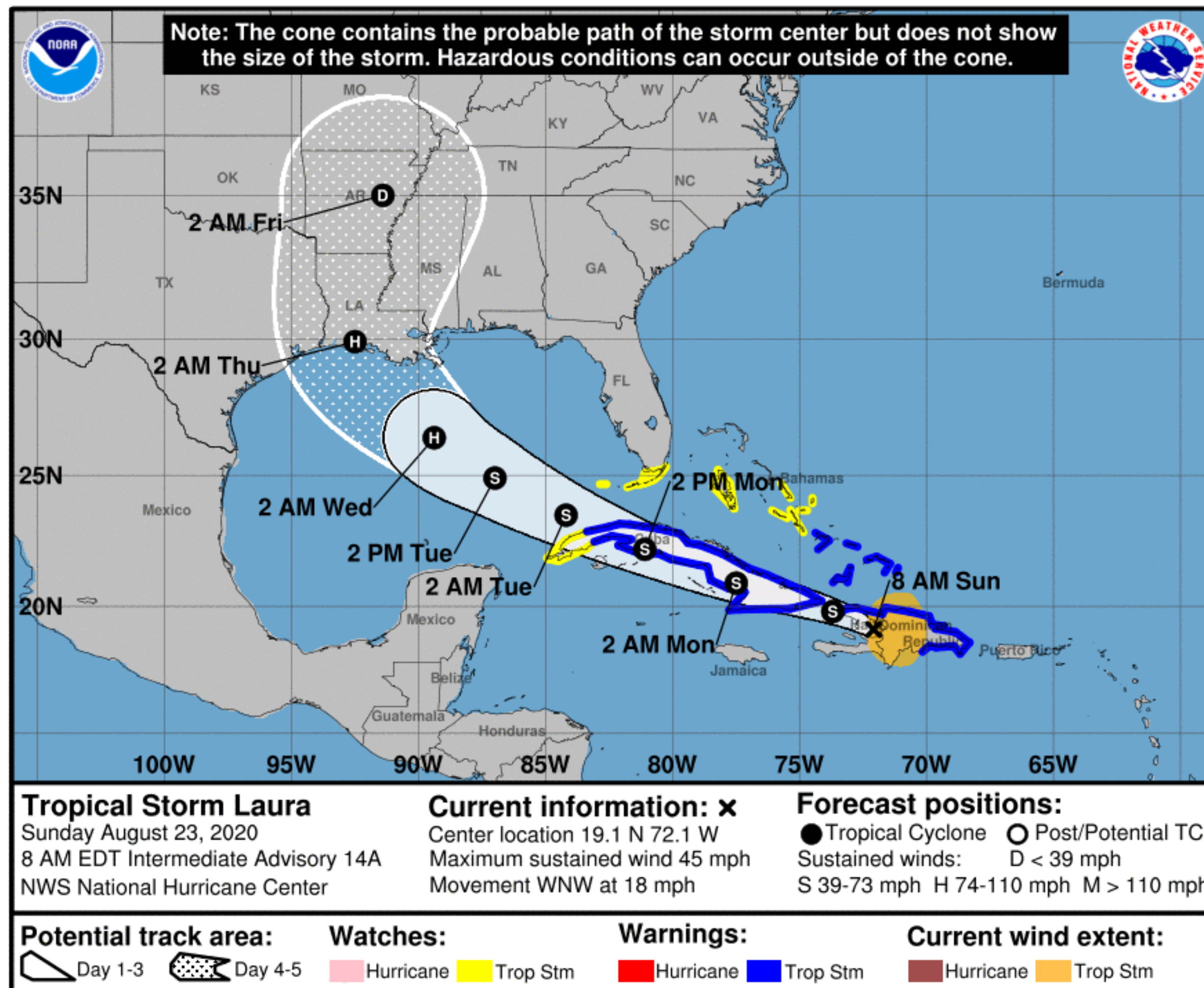


# Forecast Information

## Tropical Storm Laura



Tropical Analysis and Forecast Branch  
NWS National Hurricane Center



**NOTE:** Do not focus on the exact track. Impacts can occur well outside the area enclosed by the cone.

- **Laura will continue moving quickly to the WNW for two to three days**
- **The center will pass south of the Florida Keys as a tropical storm**
- **After reaching the Gulf, Laura should intensify to a hurricane**
- Current center forecast positions through the next 5 days illustrated by dots
- White swath of potential track is average track error added to each side of the forecast track through day 3
- Hatched swath of potential track is average track error added to each side of the forecast track days 4-5

\*\* Swaths are calculated using average track errors and actual track may be well inside, or possibly outside the potential track areas indicated.



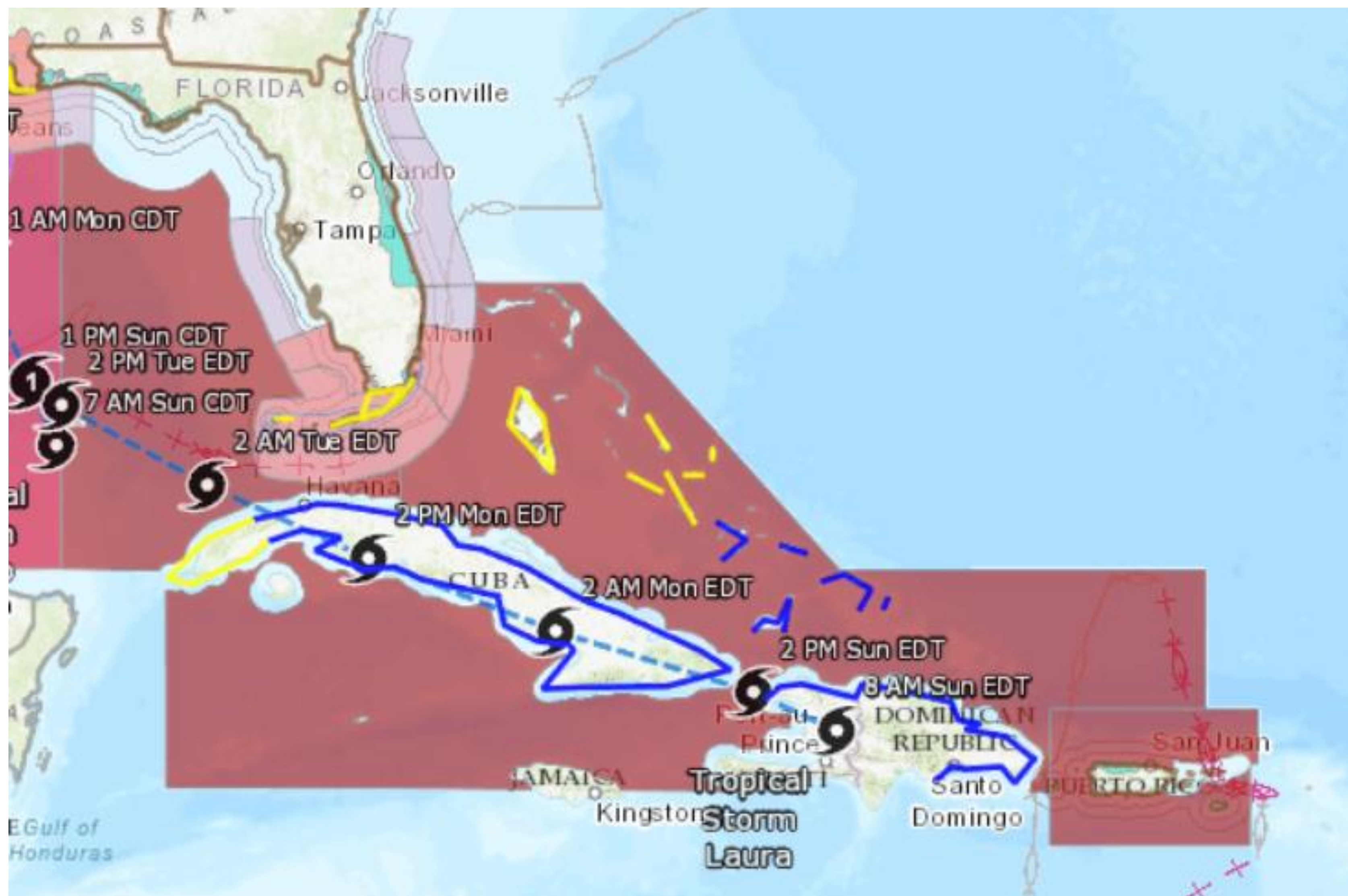
# Hazards Map

Tropical Storm Laura



Tropical Analysis and Forecast Branch  
NWS National Hurricane Center

<https://nowcoast.noaa.gov/>



-  Hurricane Warning
-  Tropical Storm Warning
-  Hurricane Watch
-  Tropical Storm Watch
-  Gale Watch
-  Small Craft Advisory

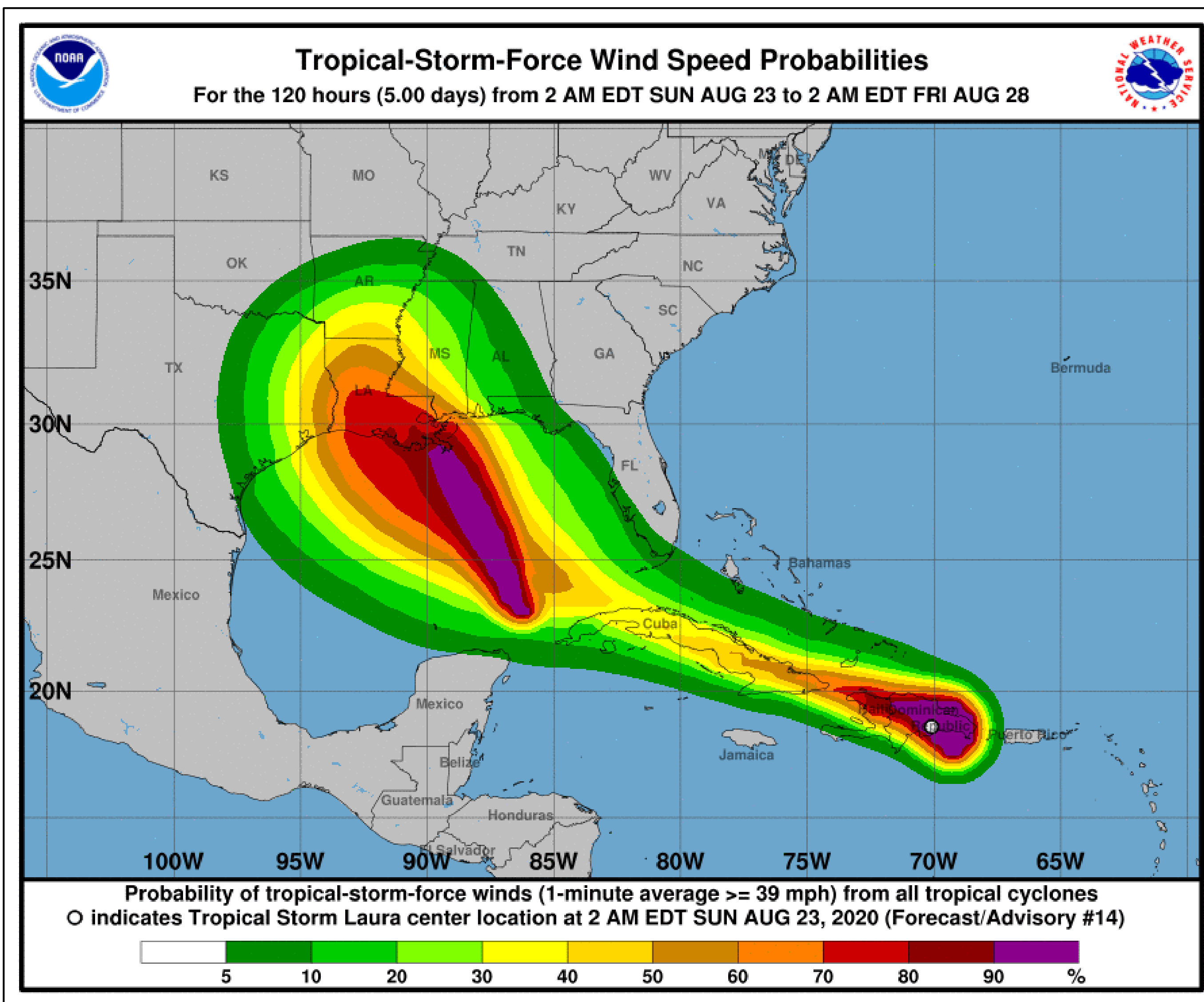


# T.S. Wind Speed Probabilities

Tropical Storm Laura



Tropical Analysis and Forecast Branch  
NWS National Hurricane Center



- Key West – 20%
  - Marathon – 10%
  - Miami – Less than 5%
  - Tampa – 5%
- 
- Probabilities of sustained tropical storm force winds (34 kt to 63 kt) over the next 5 days, based off this cyclone's wind radii and track.
  - Clear or dark green are the lowest chances of 0-30%.
  - Yellow to orange is 31-70%
  - Red through purple are the highest probabilities of 71%-100%
  - See the color bar below the image for more details.

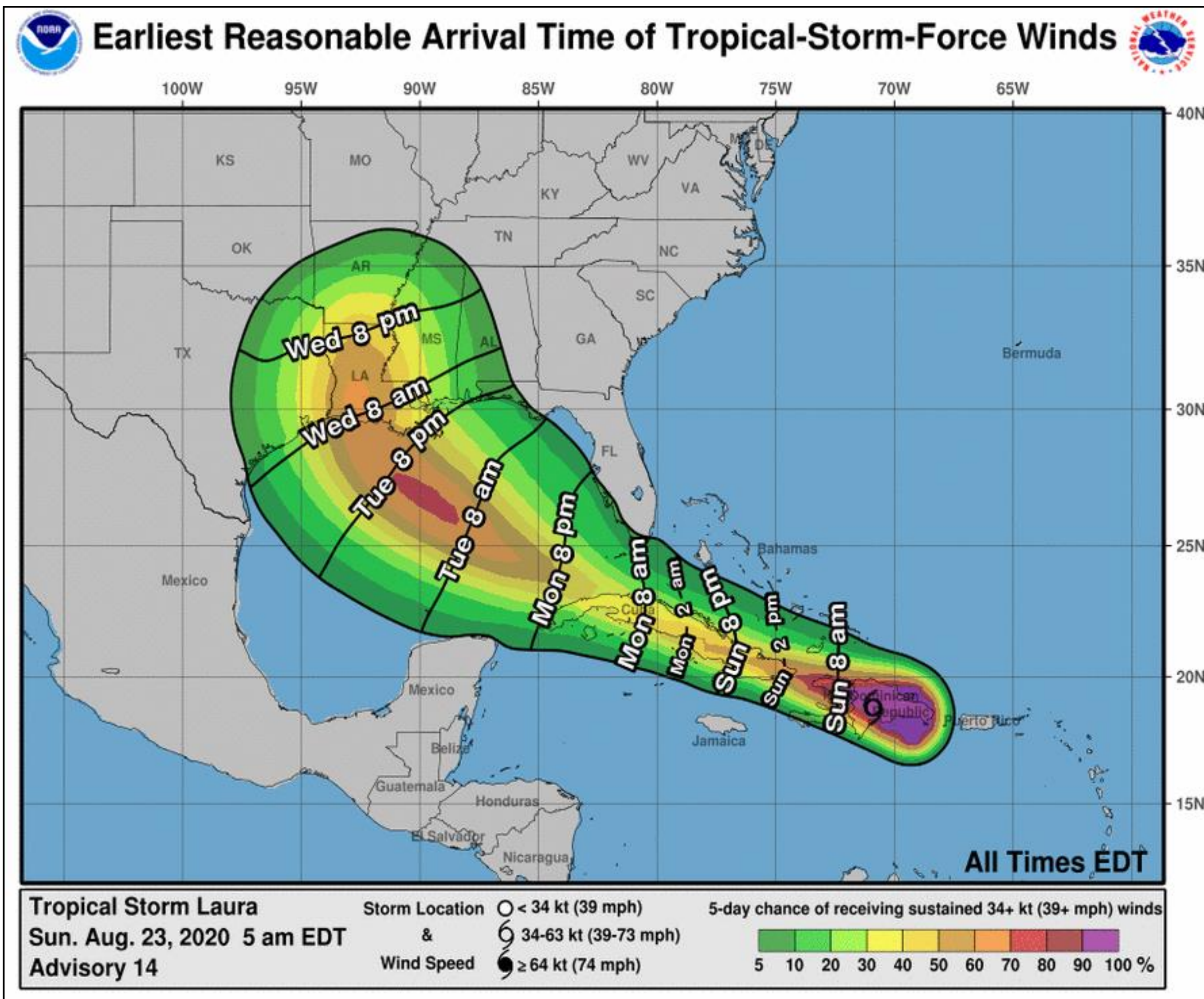


# Earliest Reasonable Time of Arrival

## Tropical Storm Laura



Tropical Analysis and Forecast Branch  
NWS National Hurricane Center



- **Key West and Marathon – Monday morning**
- The earliest reasonable time of arrival of Tropical Storm Force Winds (34kt to 63 kt) for this cyclone based off the current track and wind radii.
- Clear or dark green are the lowest chances of 0-30%.
- Yellow to orange is 31-70%
- Red through purple are the highest probabilities of 71%-100%
- See the color bar below the image for more details.

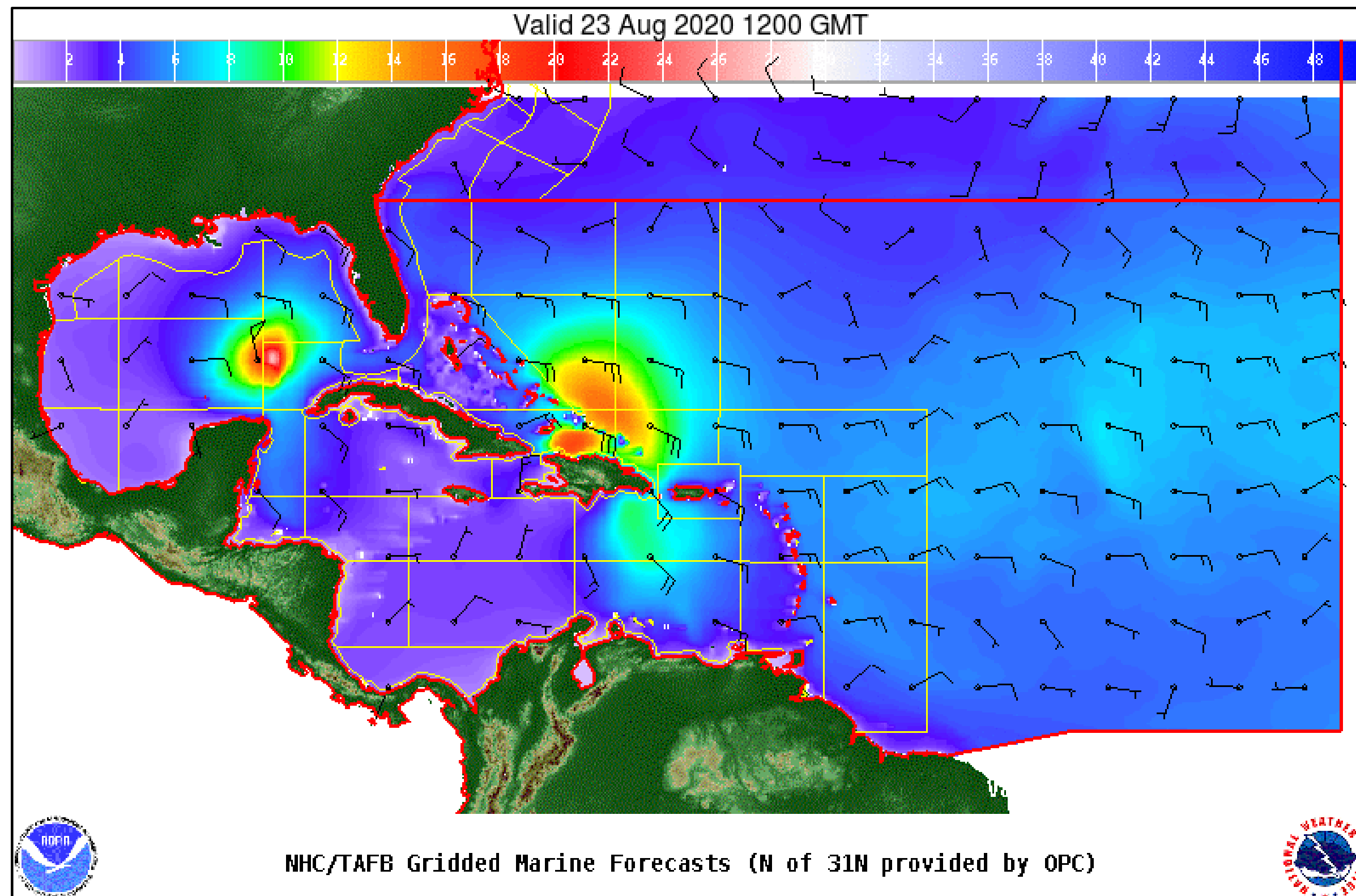


# Wind And Waves

## Tropical Storm Laura



Tropical Analysis and Forecast Branch  
NWS National Hurricane Center



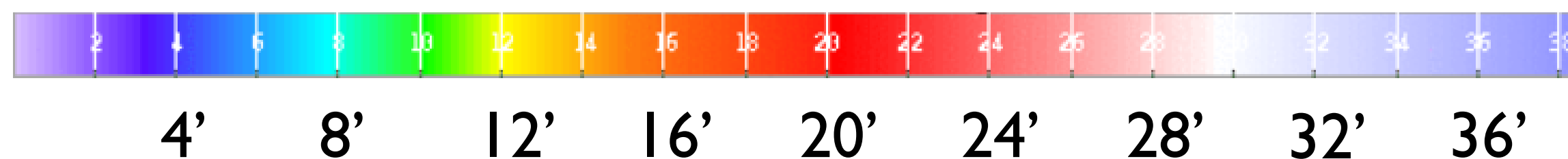
### Current Conditions

8am EDT, Sunday, August 23<sup>rd</sup>, 2020

Peak Winds: 40 kt

Peak Seas: 18 ft

- Wave heights are in feet

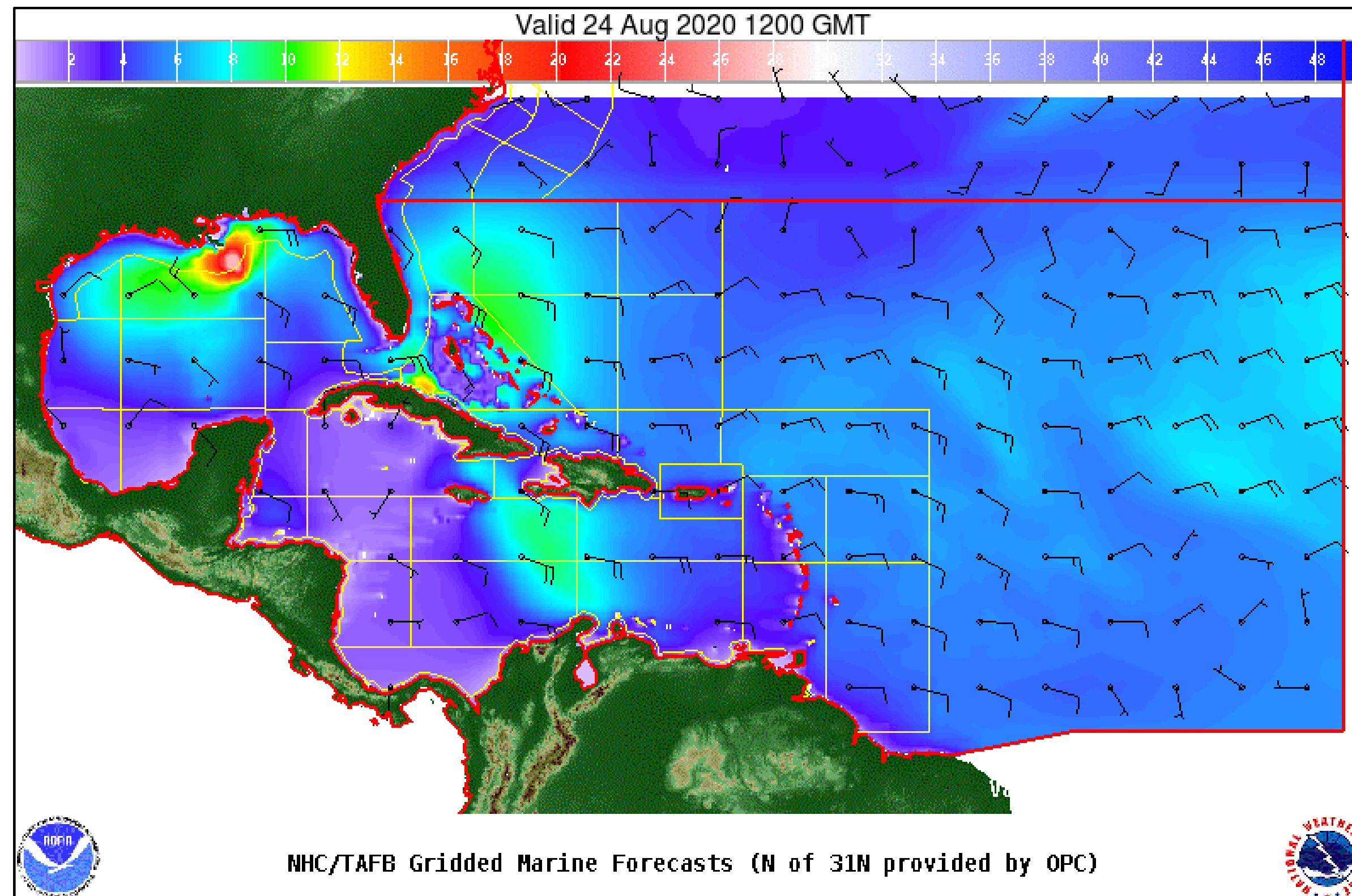


# Wind And Waves

## Tropical Storm Laura



Tropical Analysis and Forecast Branch  
NWS National Hurricane Center



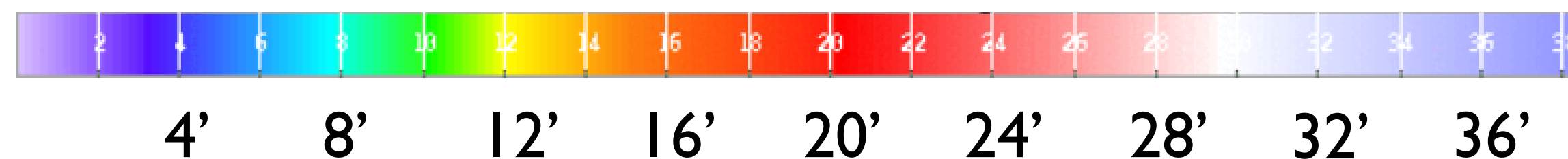
## 24 Hour Forecast

8am EDT, Monday, August 24<sup>th</sup>, 2020

Peak Winds: 40 kt

Peak Seas: 18 ft

- Wave heights are in feet



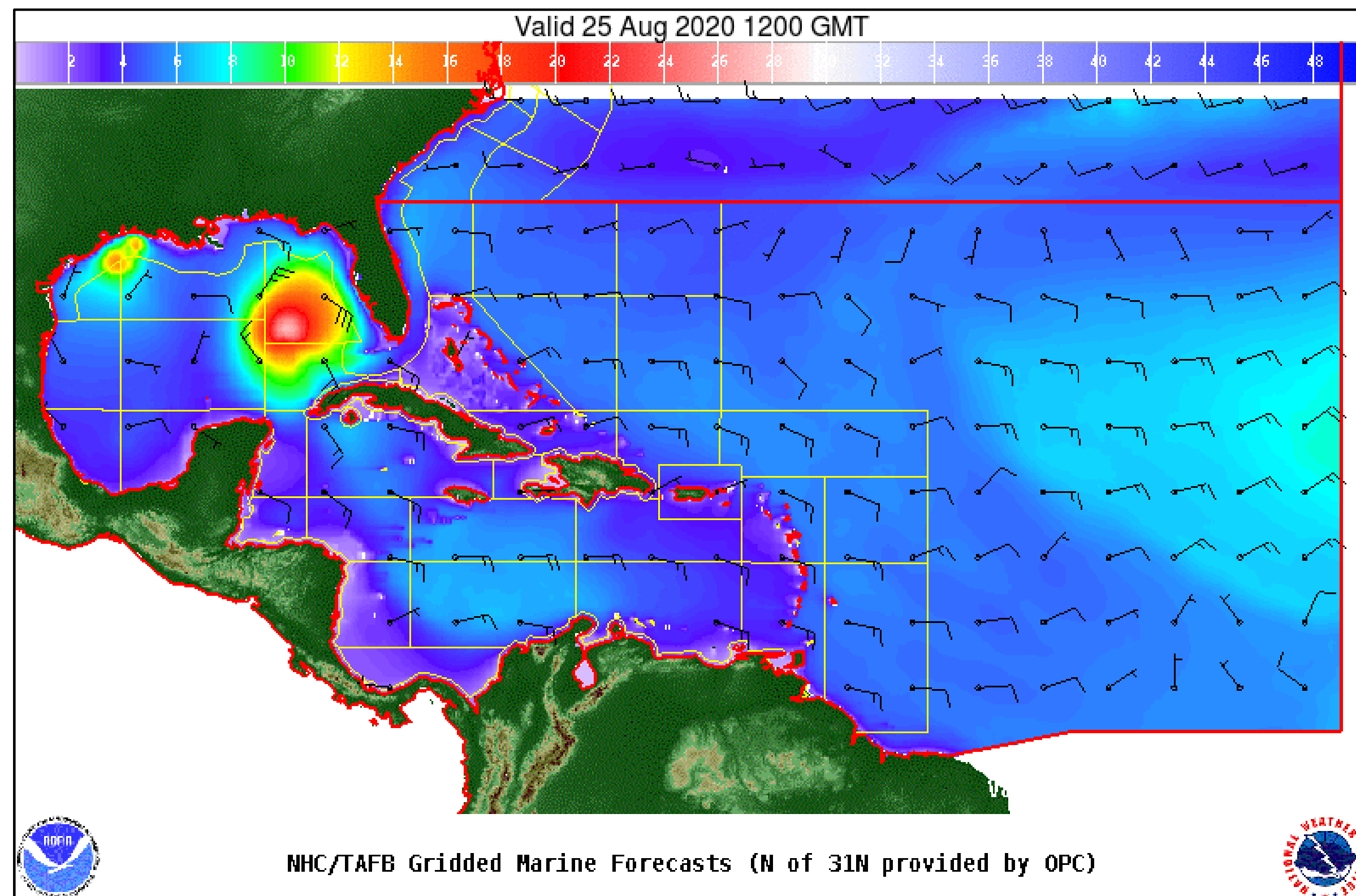


# Wind And Waves

## Tropical Storm Laura



Tropical Analysis and Forecast Branch  
NWS National Hurricane Center



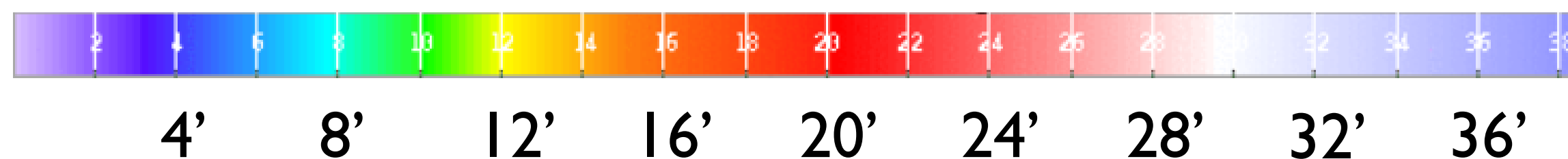
### 48 Hour Forecast

8am EDT, Tuesday, August 25<sup>th</sup>, 2020

Peak Winds: 50 kt

Peak Seas: 25 ft

- Wave heights are in feet



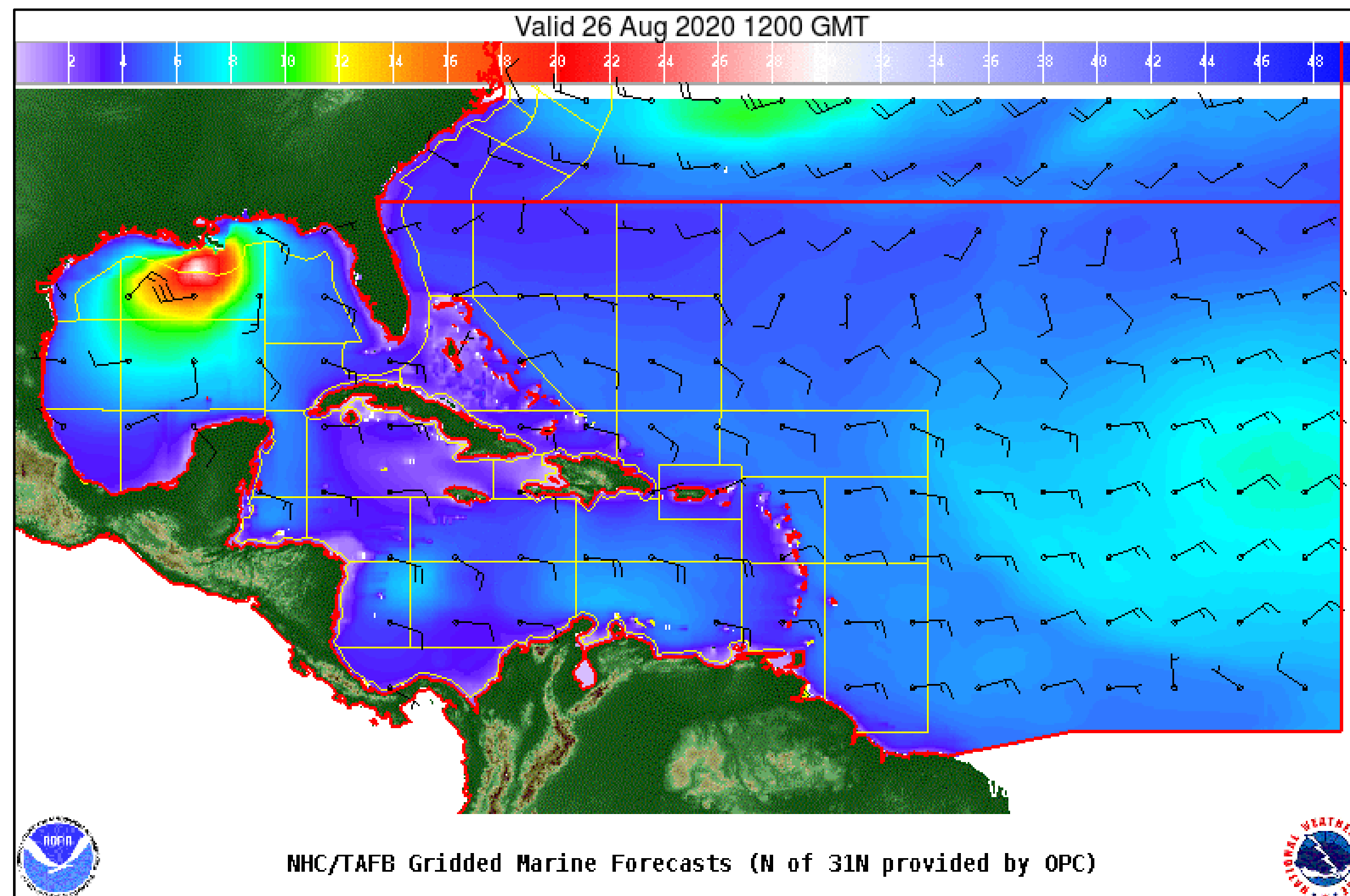


# Wind And Waves

## Tropical Storm Laura



Tropical Analysis and Forecast Branch  
NWS National Hurricane Center



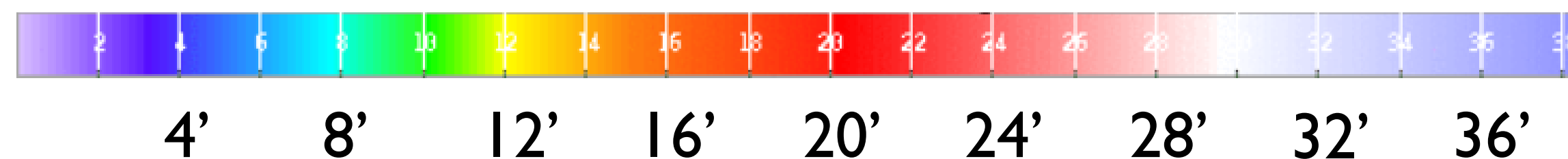
## 72 Hour Forecast

8am EDT, Wednesday, August 26, 2020

Peak Winds: 20 kt (in District 7's waters)

Peak Seas: 8 ft (in District 7's waters)

- Wave heights are in feet



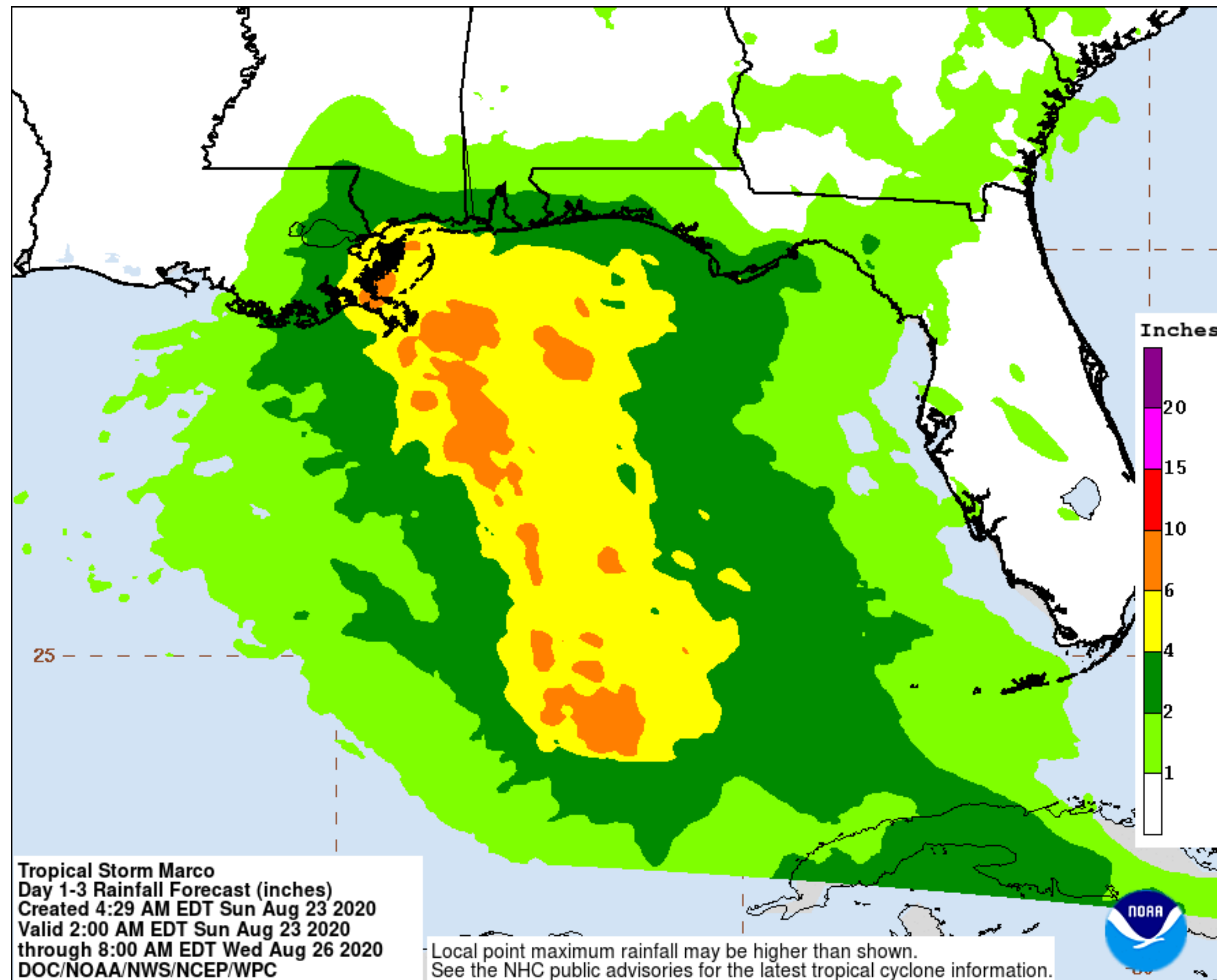


# Expected Storm Total Rainfall and Chance of Flooding Rain

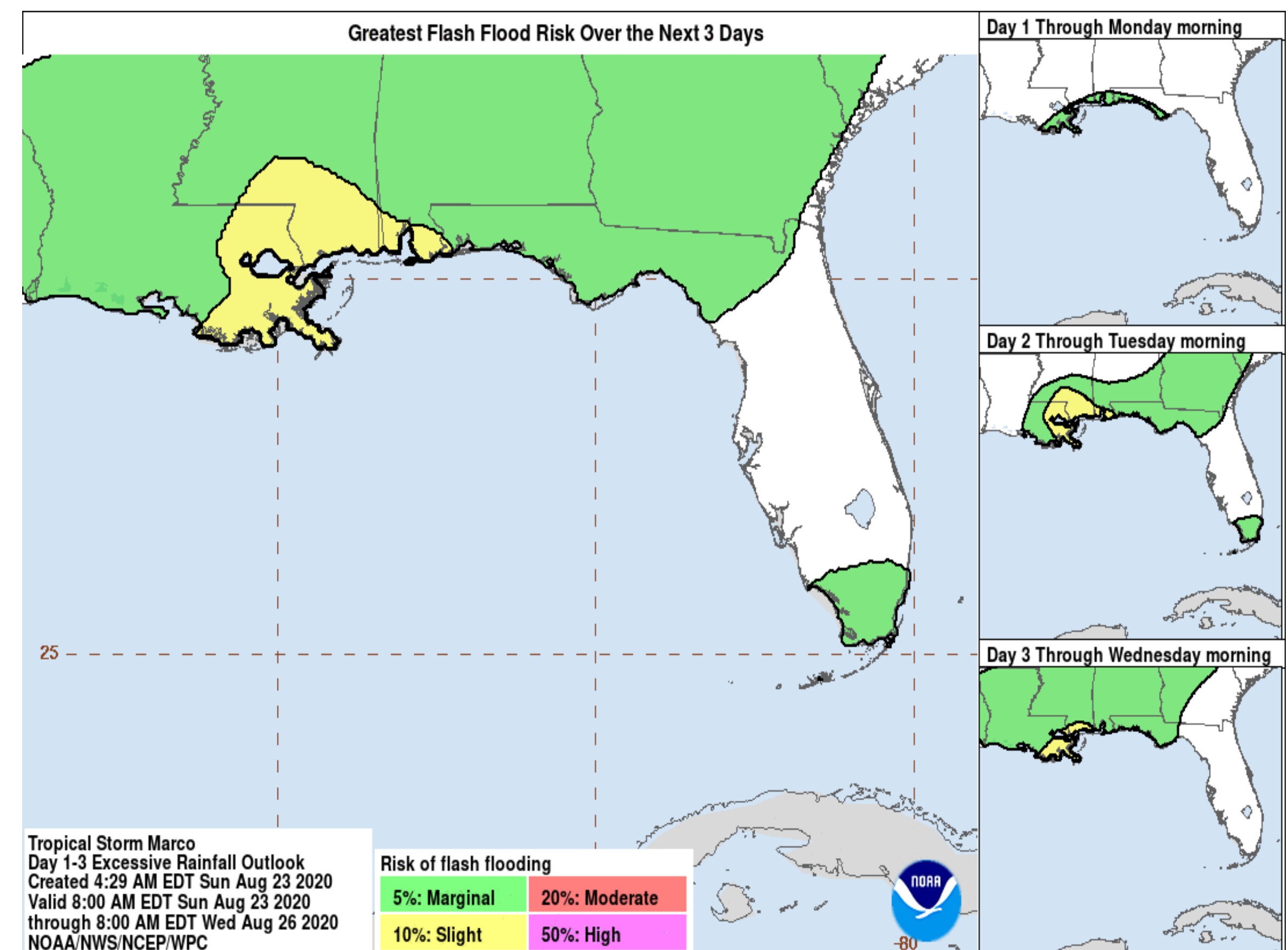


Tropical Analysis and Forecast Branch  
NWS National Hurricane Center

## Tropical Storm Laura



- Total rainfall in inches through Wednesday morning.



Risk of rainfall exceeding flash flood guidance within 25 miles of a point

**HIGH: > 50%** **SLGT: 10%-20%**  
**MDT: 20%-50%** **MRGL: 5%-10%**

Valid through Wednesday morning





# Key Messages

## Tropical Storm Laura





Tropical Analysis and Forecast Branch  
NWS National Hurricane Center



### Key Messages for Tropical Storm Laura

Advisory 14: 5:00 AM EDT Sun Aug 23, 2020

1. Tropical storm conditions are expected across portions of the Dominican Republic and Haiti, the Turks and Caicos, the southeastern Bahamas, and Cuba through Monday. Heavy rainfall is likely across these areas and could cause mudslides and flash and urban flooding.
2. Tropical storm conditions are possible the central Bahamas and Andros Island tonight and Monday, and in the Florida Keys on Monday.
3. The details of the long-range track and intensity forecasts remain uncertain since Laura is forecast to move near or over portions of the Greater Antilles through Monday. However, Laura is forecast to strengthen over the Gulf of Mexico and could bring storm surge, rainfall, and wind impacts to portions of the U.S. Gulf Coast by the middle of next week. This could result in a prolonged period of hazardous weather for areas that are likely to be affected by Tropical Storm Marco earlier in the week. Interests there should monitor the progress of Laura and Marco and updates to the forecast during the next few days.



For more information go to [hurricanes.gov](https://hurricanes.gov)

- Marine Key Messages:
- Large tropical storm with 12 ft seas extending out more than 200 nm in the northern semi-circle with peak seas 18 ft
- Seas to increase to near 25 ft in D7's eastern Gulf of Mexico on Tuesday
- Seas to diminish to near normal in D7's waters by Wednesday





# TROPICAL STORM LAURA BRIEFING

You can contact the Tropical Analysis and Forecast Branch at  
305-229-4424

*The Next Briefing Will Be:  
Sunday 3:00 PM EDT*

*You can always find get the latest graphics and information for this storm at [www.hurricanes.gov](http://www.hurricanes.gov)*



NHC\_TAFB

[www.nhc.noaa.gov](http://www.nhc.noaa.gov)