

IMPACTS FOR USCG D7 and D8 (through next 5 days)

Winds – **High**

Storm Surge – **Low**

Rainfall/Flash Flooding – **Moderate**

Tornadoes – **Low**

Waves - **High**

T.D.TWENTY-EIGHT BRIEFING



6:00 PM EDT

Saturday, October 24, 2020

Prepared by:

Eric Christensen

*Tropical Analysis and Forecast Branch
NWS National Hurricane Center*



NHC_TAFB

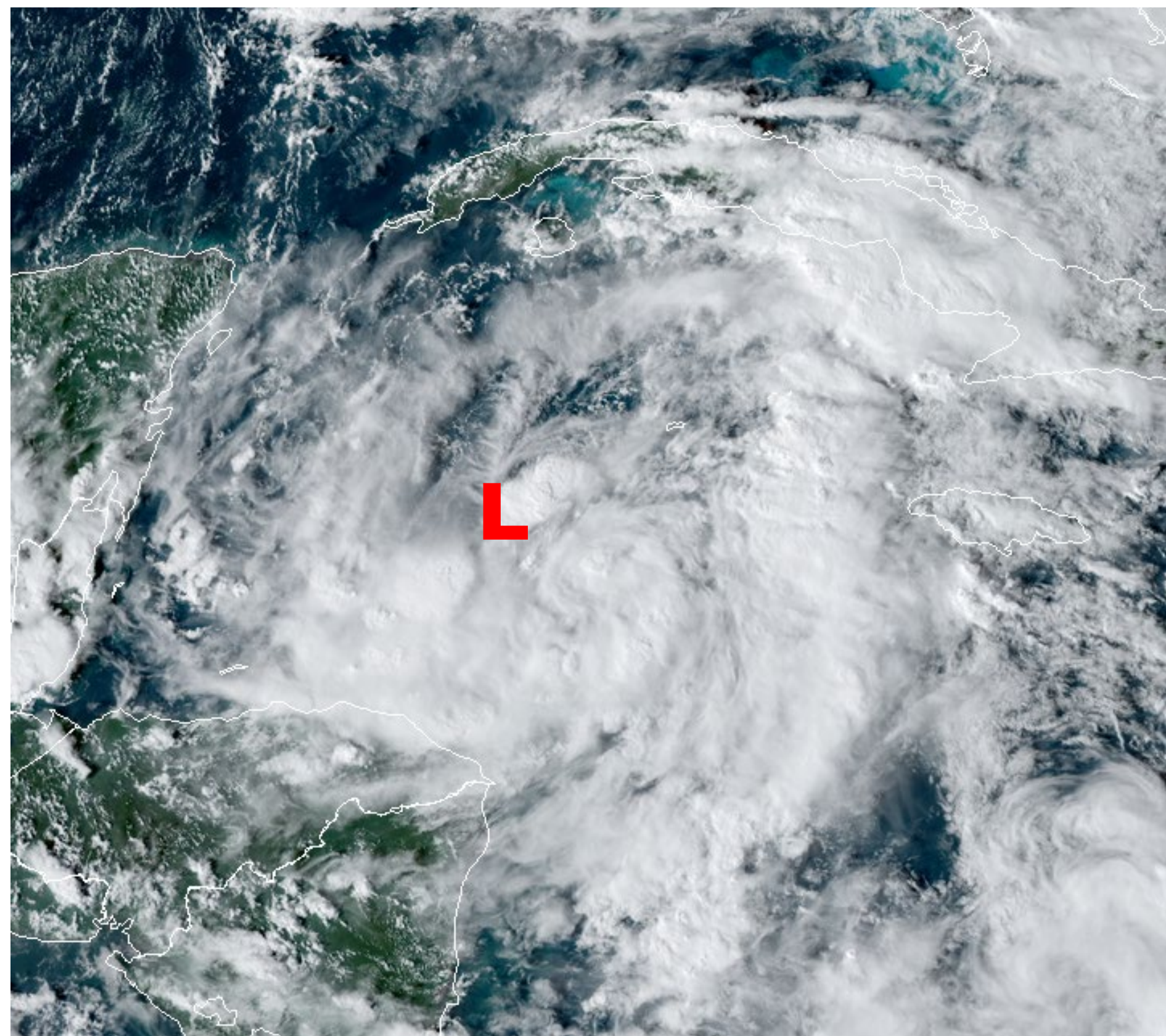
www.nhc.noaa.gov

Situation Overview

T.D. Twenty-eight



Tropical Analysis and Forecast Branch
NWS National Hurricane Center



...2020 PRODUCES YET ANOTHER TROPICAL DEPRESSION...

...TROPICAL STORM WATCH ISSUED FOR PART OF WESTERN CUBA...

SUMMARY OF 600 PM EDT INFORMATION

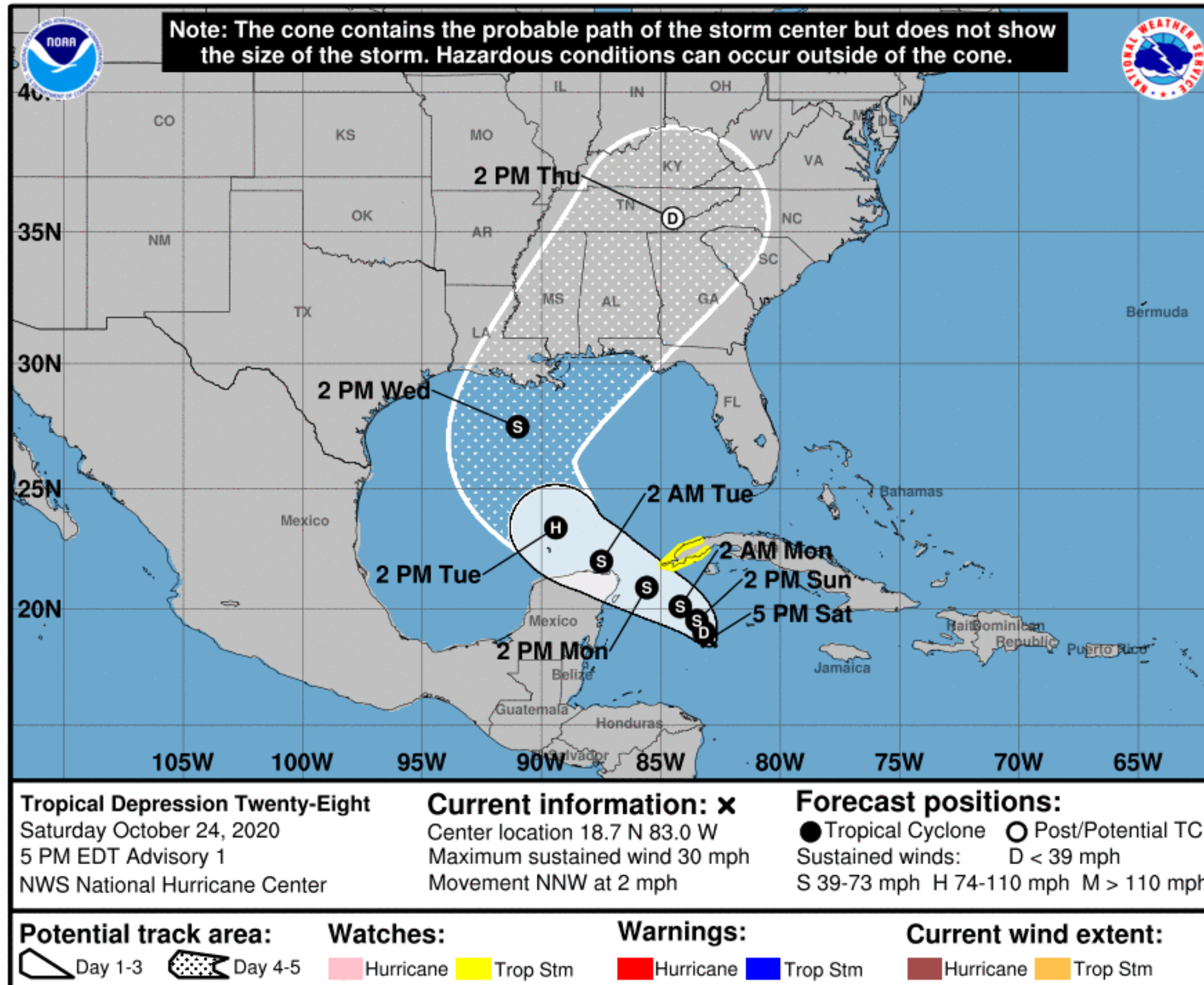
LOCATION...18.7N 83.0W
ABOUT 195 NM ESE OF WESTERN TIP OF CUBA
MAXIMUM SUSTAINED WINDS 25 KT
PRESENT MOVEMENT...NNW AT 2 KT

Forecast Information

T.D. Twenty-eight



Tropical Analysis and Forecast Branch
NWS National Hurricane Center



- **Tropical Depression Twenty-eight is expected to reach tropical storm strength Sunday over the northwest Caribbean**
- **The storm will continue to intensify as it moves northwest passing over the northeast Yucatan.**
- **It will reach hurricane strength over the warm waters of the south central Gulf Tue, then weaken over the north central Gulf through mid week.**
- Current center forecast positions through the next 5 days illustrated by dots
- White swath of potential track is average track error added to each side of the forecast track through day 5

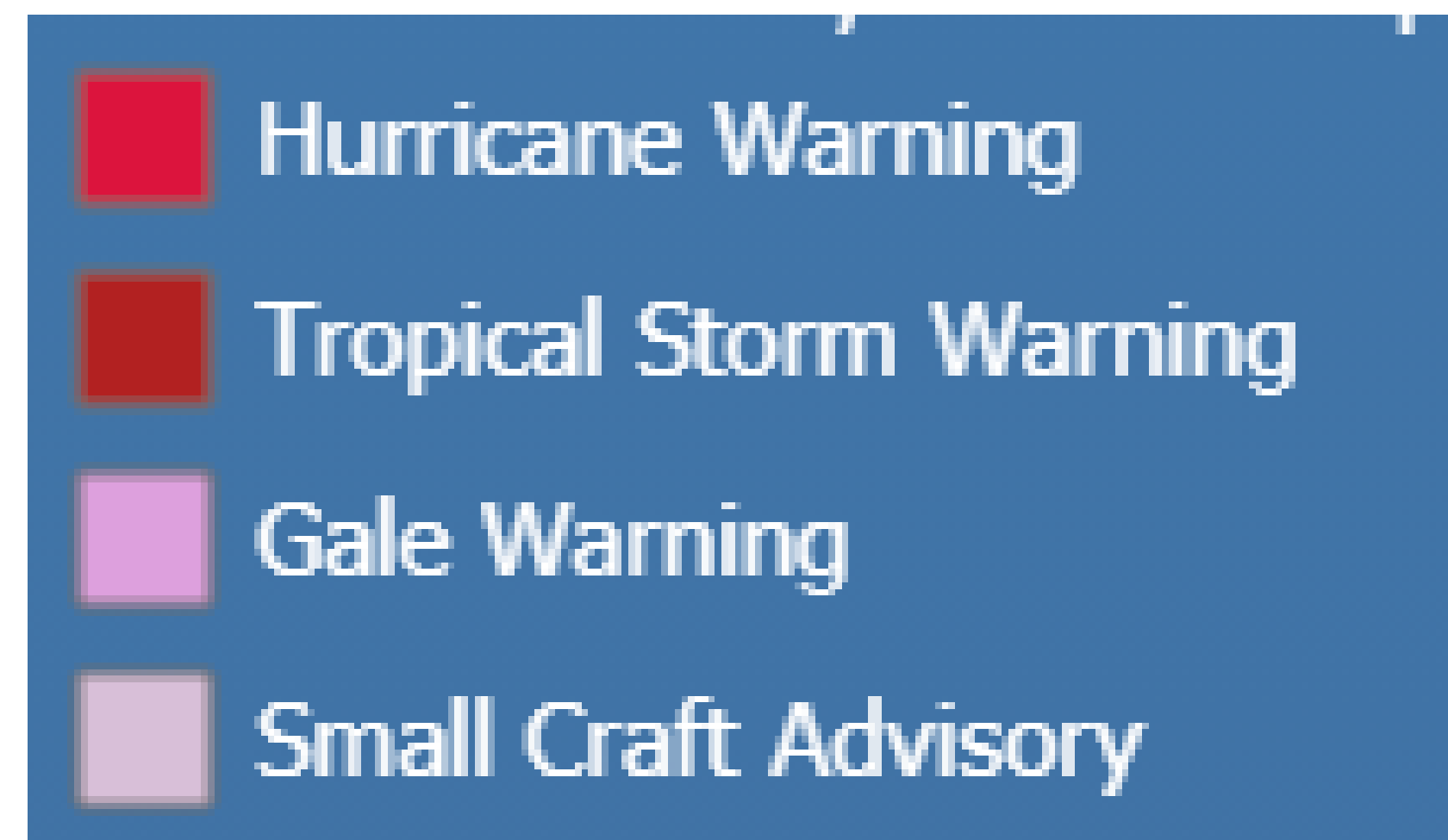
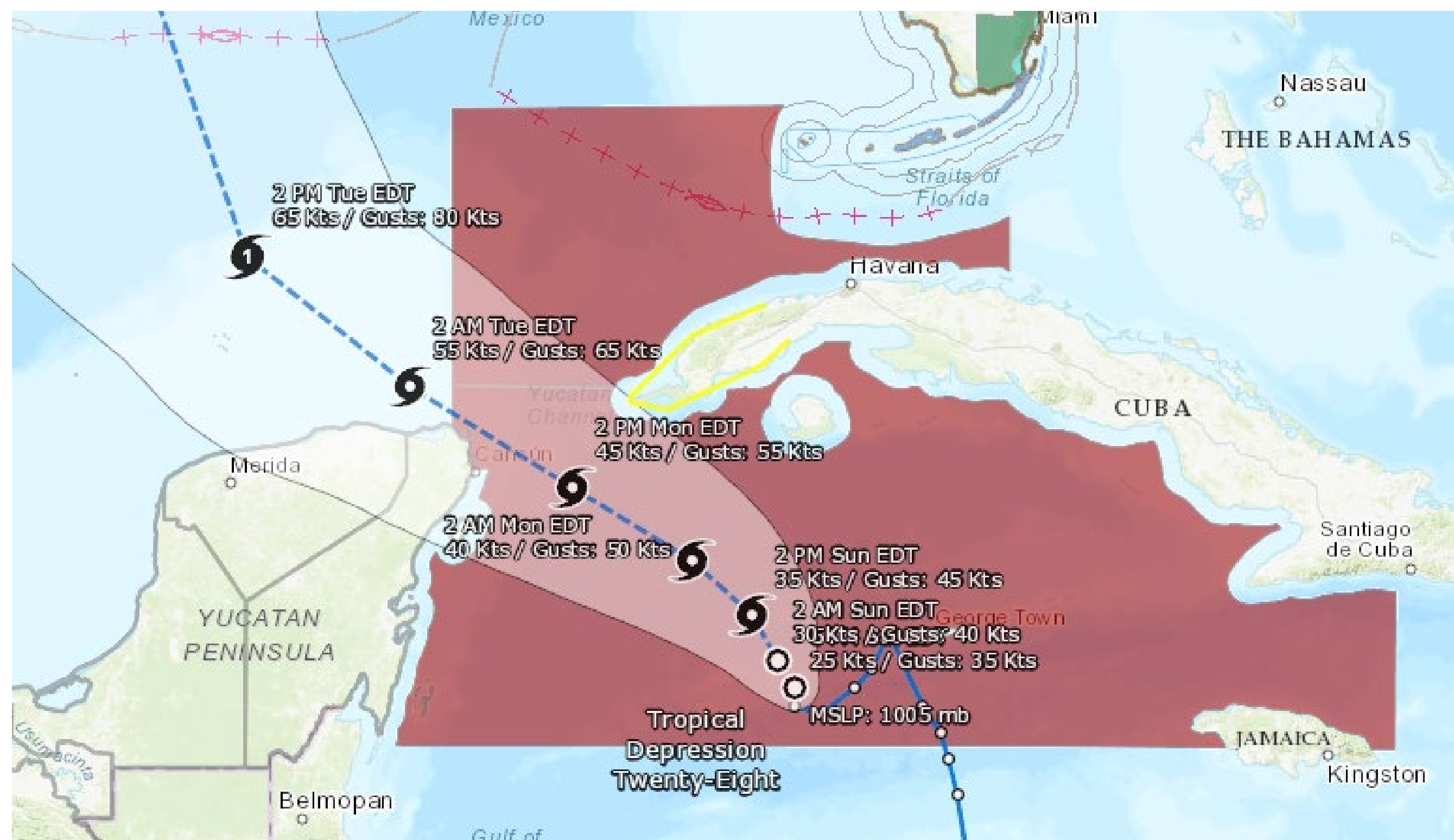
** Swaths are calculated using average track errors and actual track may be well inside, or possibly outside the potential track areas indicated.

Hazards Map

T.D. Twenty-eight



Tropical Analysis and Forecast Branch
NWS National Hurricane Center



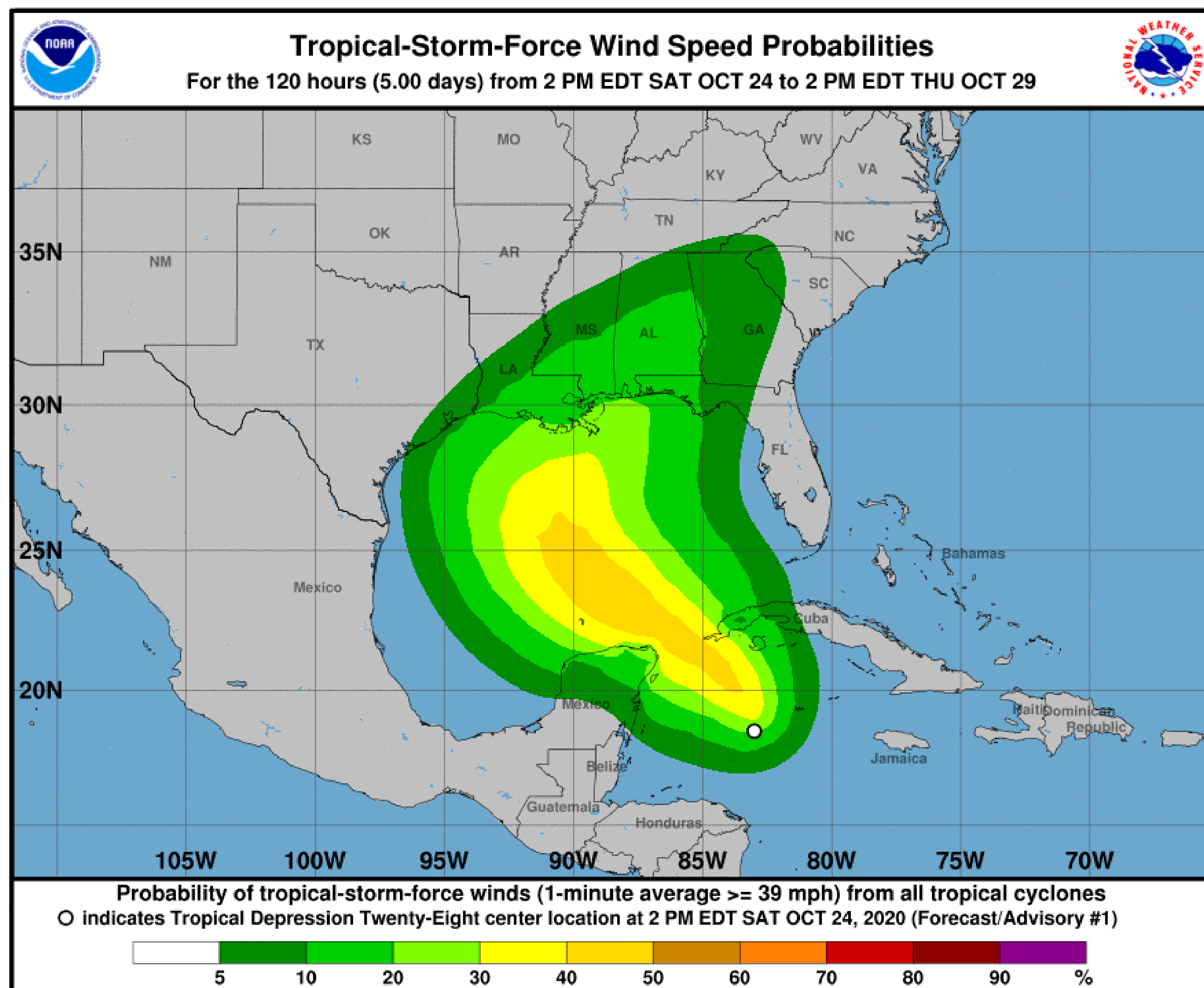
<https://nowcoast.noaa.gov/>

Hurricane Wind Speed Probabilities

T.D. Twenty-eight



Tropical Analysis and Forecast Branch
NWS National Hurricane Center



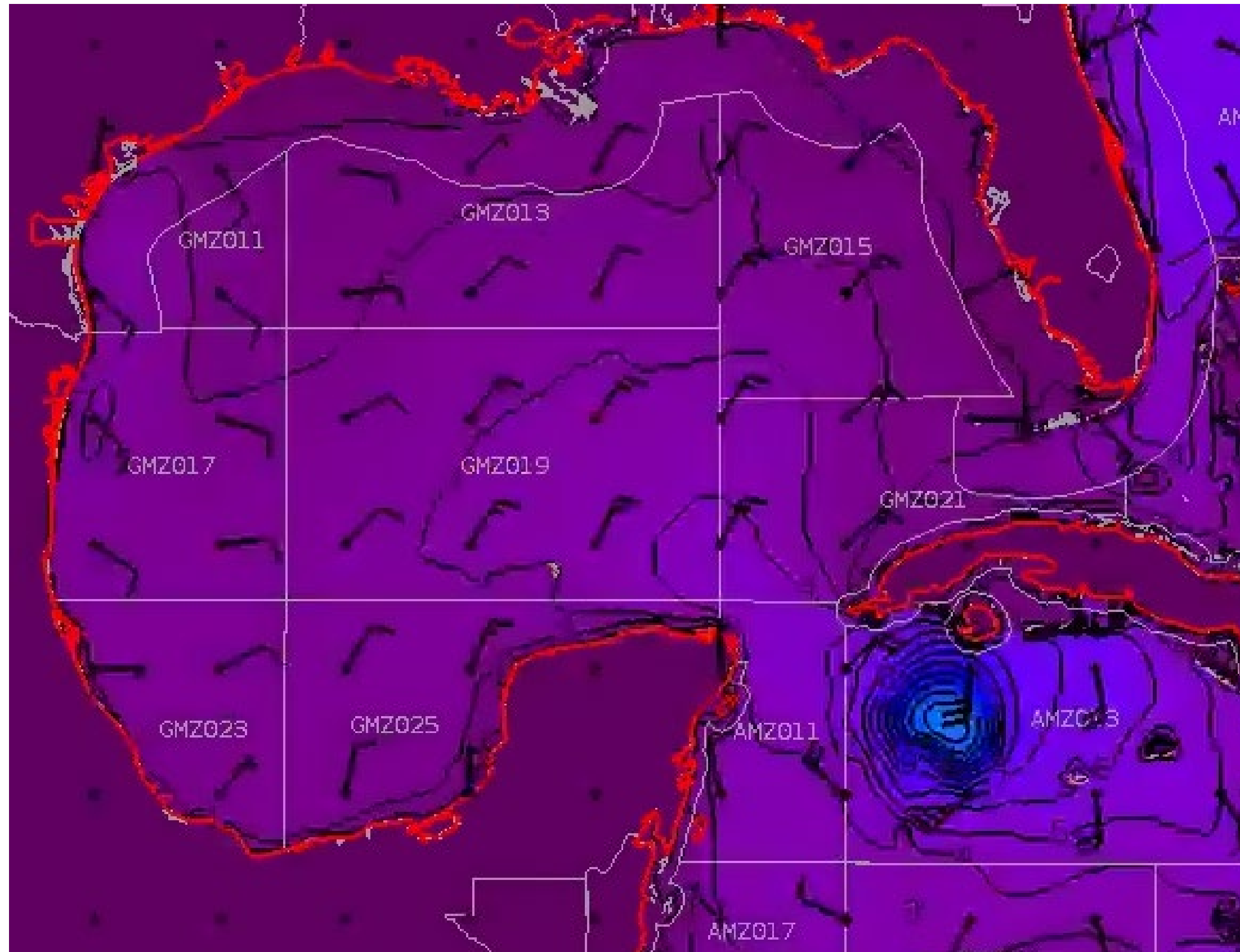
- Gulfport MS – 15%
- New Orleans, LA – 15%
- Cameron, LA – 10%
- Mobile Regional Airport, AL – 15%
- Clear or dark green are the lowest chances of 0-30%.
- Yellow to orange is 31-70%
- Red through purple are the highest probabilities of 71%-100%
- See the color bar below the image for more details.

Wind And Waves

T.D. Twenty-eight



Tropical Analysis and Forecast Branch
NWS National Hurricane Center



24 Hour Forecast

Sun, Oct 25 18Z

Peak Winds: 35 kt

Peak Seas: 14 ft

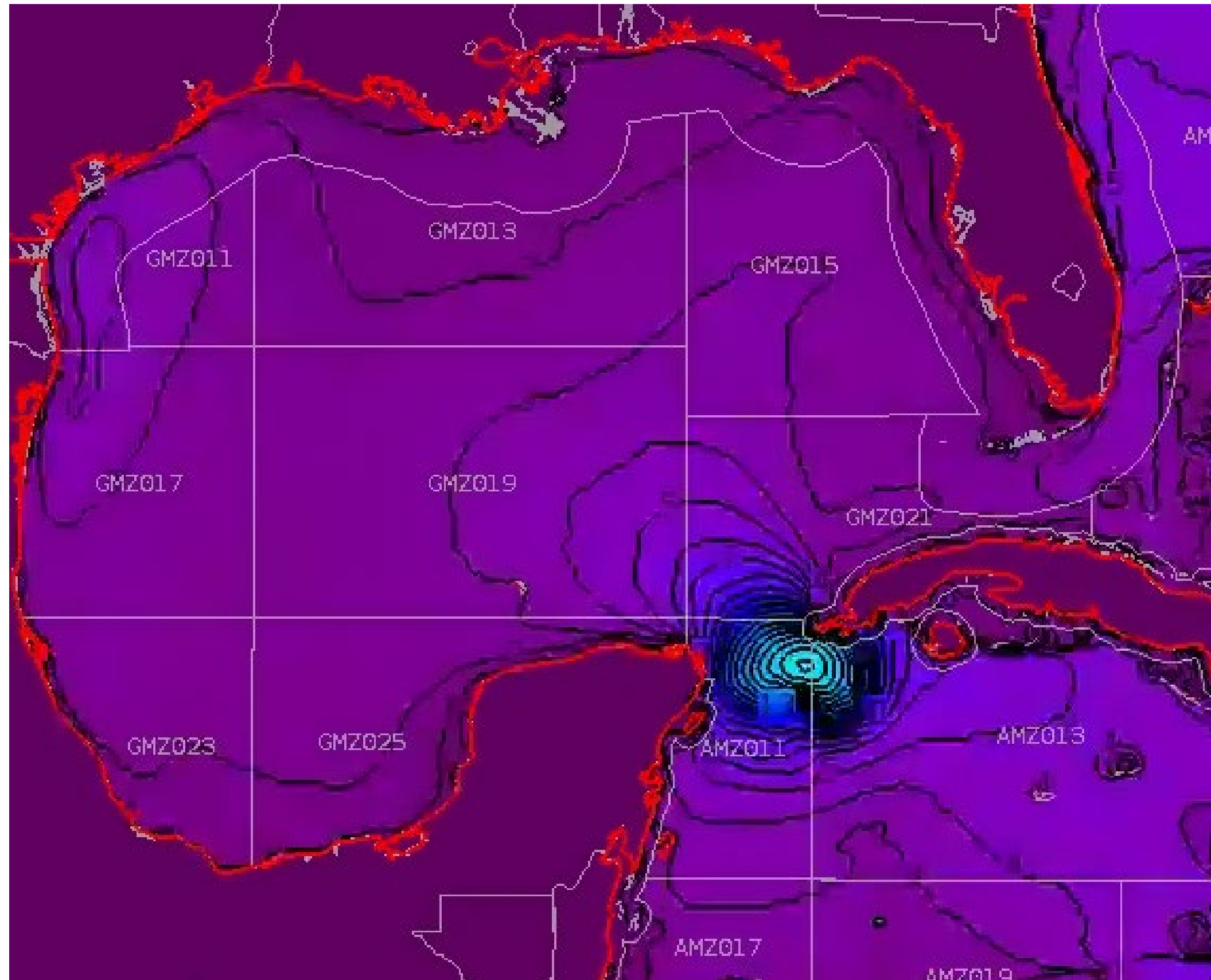
- Wave heights are in feet

Wind And Waves

T.D. Twenty-eight



Tropical Analysis and Forecast Branch
NWS National Hurricane Center



48 Hour Forecast

Mon, Oct 26 18Z

Peak Winds: 45 kt

Peak Seas: 20 ft

- Wave heights are in feet

Wind And Waves

T.D. Twenty-eight



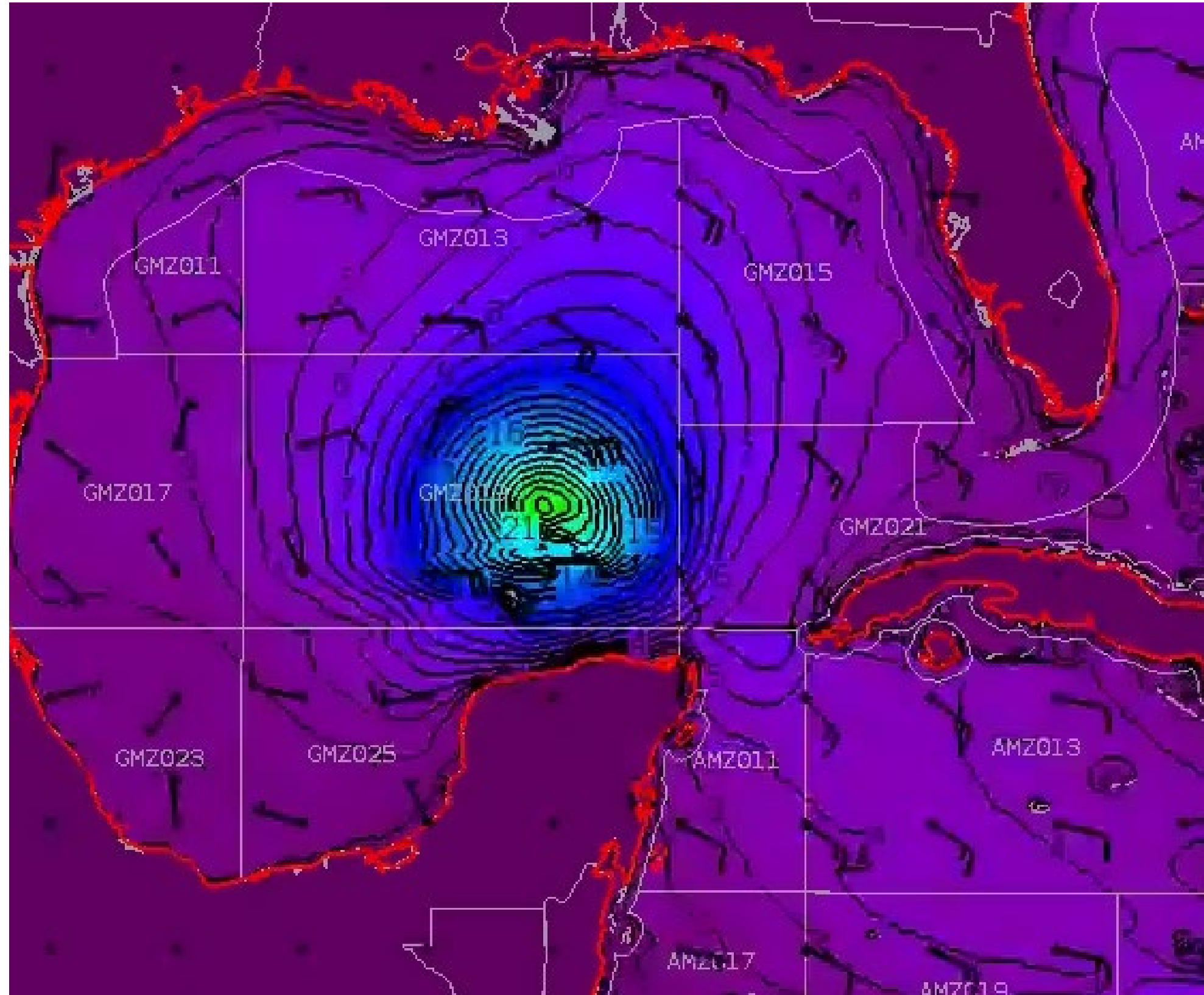
Tropical Analysis and Forecast Branch
NWS National Hurricane Center

72 Hour Forecast

Tue, Oct 27 18Z

Peak Winds: 65 kt

Peak Seas: 25 ft



- Wave heights are in feet

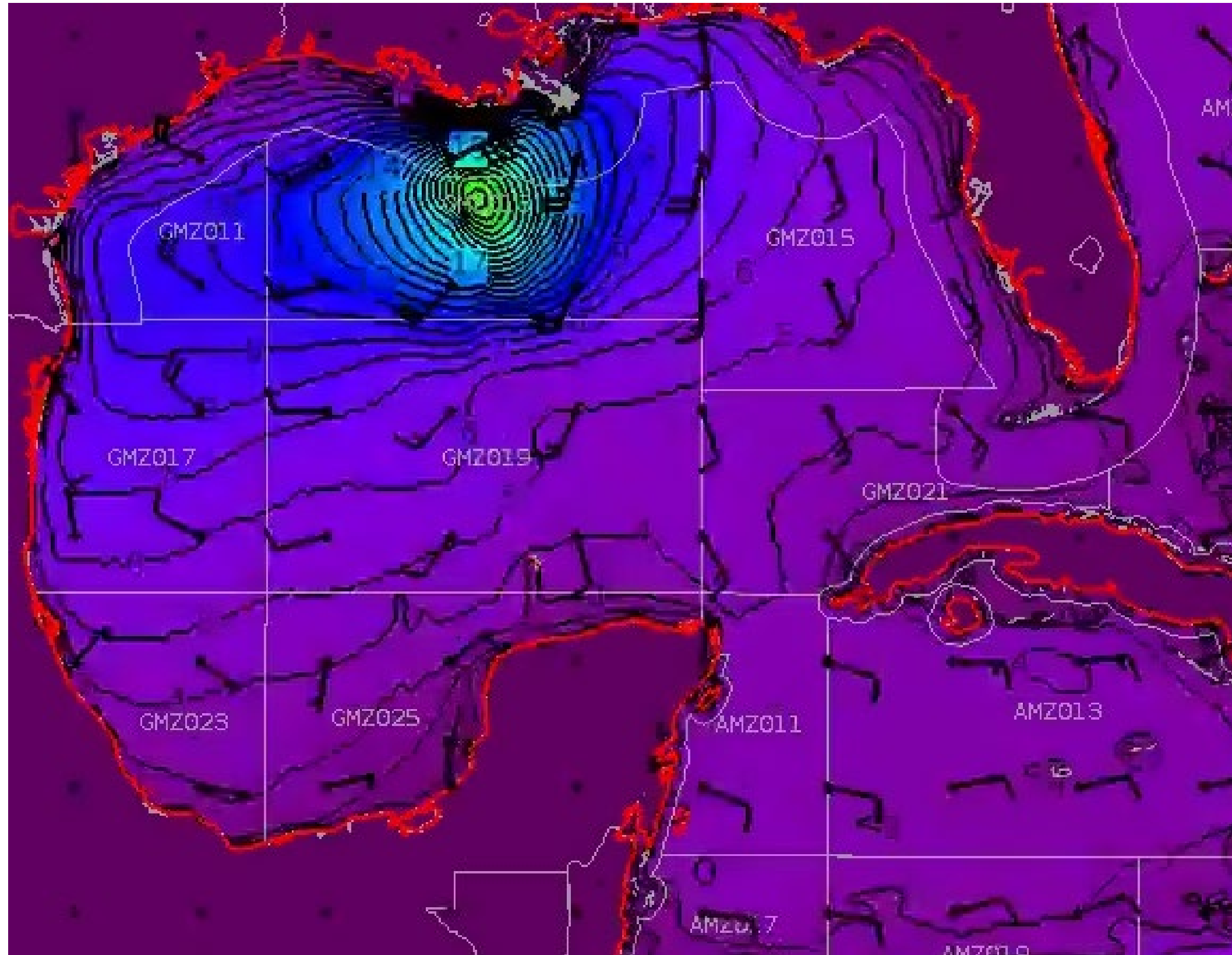
4' 8' 12' 16' 20' 24' 28' 32' 36'

Wind And Waves

T.D. Twenty-eight



Tropical Analysis and Forecast Branch
NWS National Hurricane Center



96 Hour Forecast
(Insert Forecast Time)

Peak Winds: 55 kt

Peak Seas: 26 ft

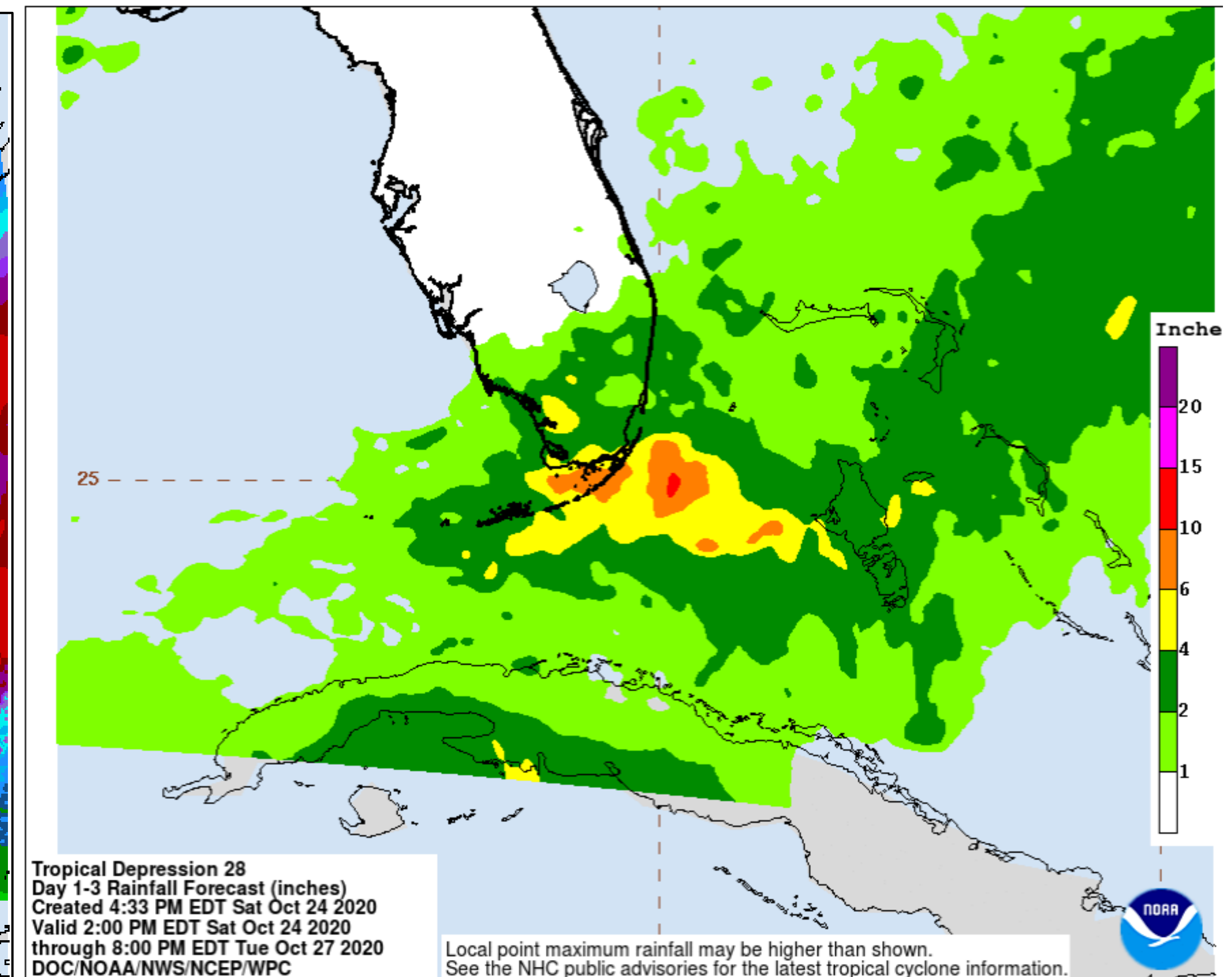
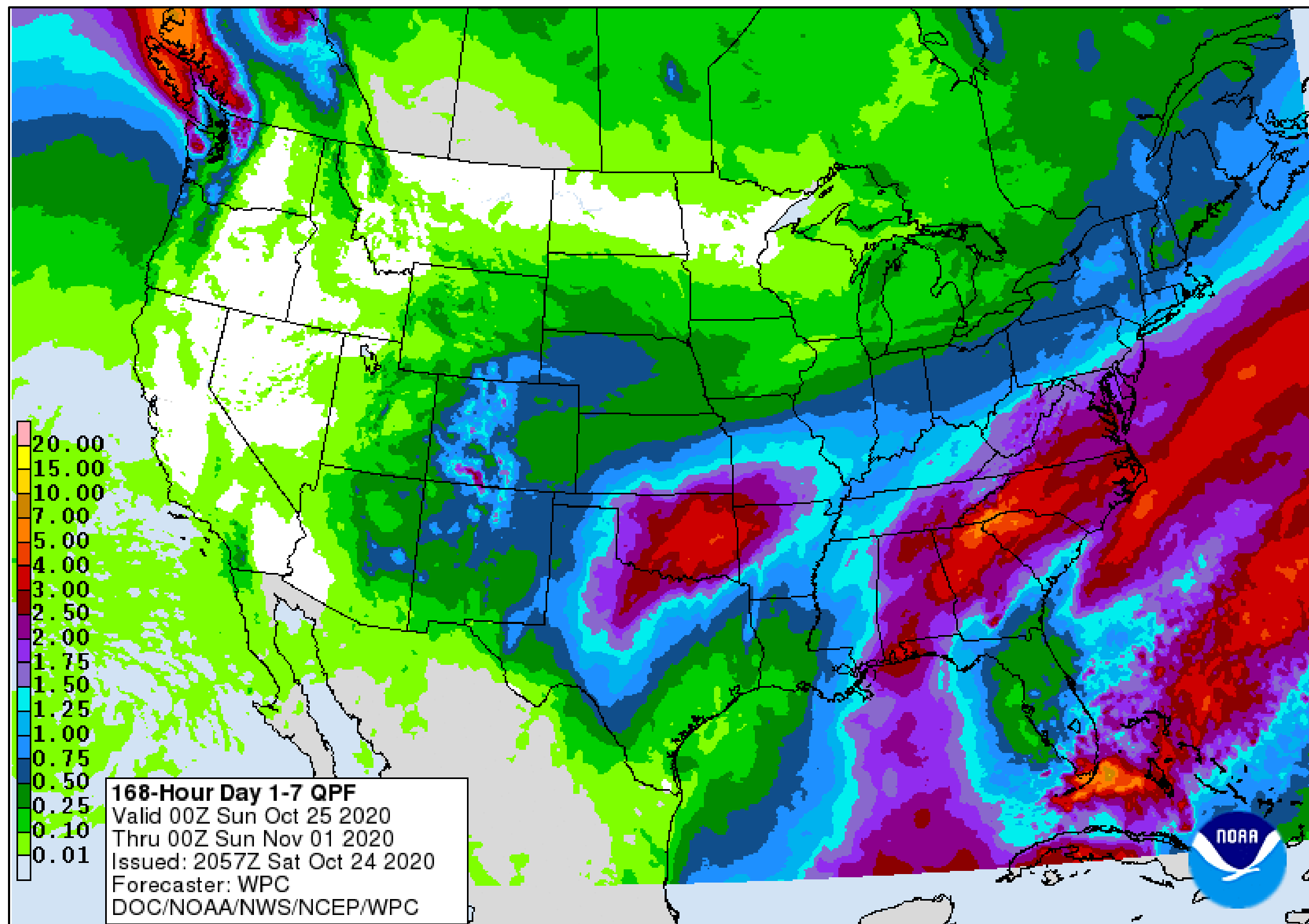
- Wave heights are in feet

Expected Storm Total Rainfall and Chance of Rainfall Flooding

Hurricane Twenty-eight



Tropical Analysis and Forecast Branch
NWS National Hurricane Center



- Total rainfall in inches through the next week (to late Sat, Nov 1).
- Total rainfall in inches through late Tue.

Key Messages

Hurricane Twenty-eight



Tropical Analysis and Forecast Branch
NWS National Hurricane Center



Key Messages for Tropical Depression Twenty-Eight

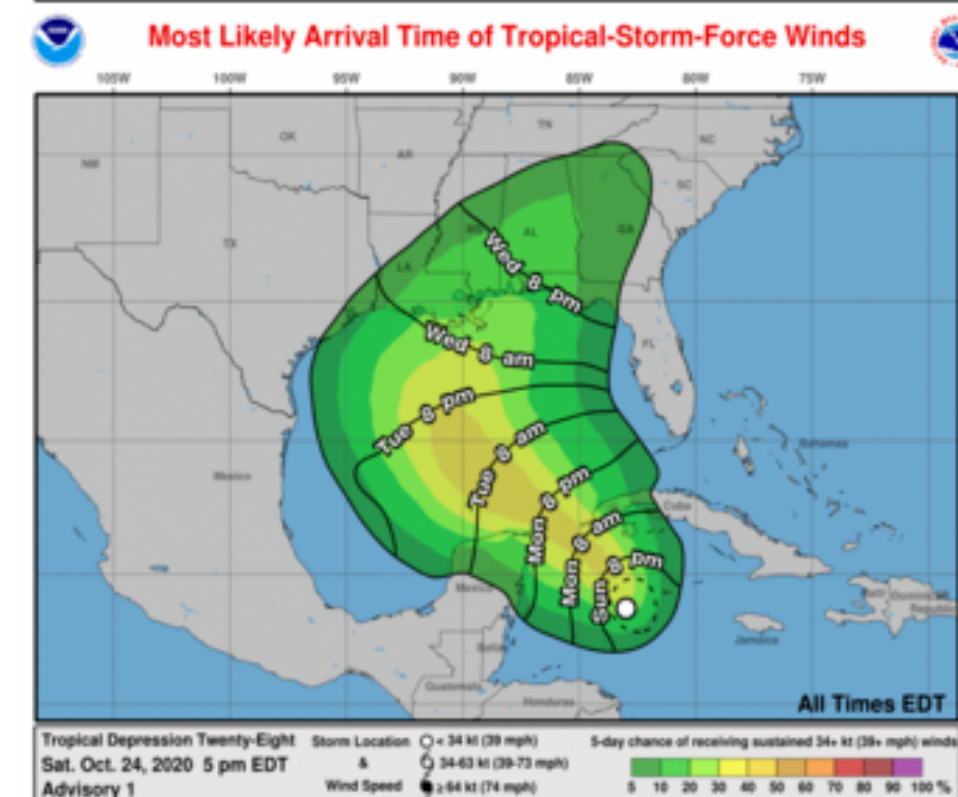
Advisory 1: 5:00 PM EDT Sat Oct 24, 2020



1. The depression is forecast to strengthen to a tropical storm Sunday and could bring tropical storm conditions to extreme western Cuba on Monday, where a Tropical Storm Watch is in effect. There is also a risk of tropical storm conditions in the northern Yucatan Peninsula of Mexico Monday night and Tuesday.

2. Through Wednesday, heavy rainfall is expected across portions of central and western Cuba, the Cayman Islands, Jamaica, the northeast Yucatan peninsula of Mexico, southern Florida and the Keys. This rainfall may lead to flash flooding in urban areas.

3. The system is forecast to approach the northern Gulf Coast as a tropical storm on Wednesday, and could bring storm surge, rainfall, and wind impacts to areas from Louisiana to the Florida Panhandle. Residents in these areas should monitor the progress of the depression and updates to the forecast.



For more information go to hurricanes.gov

IMPACTS FOR USCG D7 and D8 (through next 5 days)

Winds – **High**

Storm Surge – **Low**

Rainfall/Flash Flooding – **Moderate**

Tornadoes – **Low**

Waves - **High**



HURRICANE TWENTY-EIGHT BRIEFING

You can contact the Tropical Analysis and Forecast Branch at
305-229-4424

You can always find get the latest graphics and information for this storm at www.hurricanes.gov



NHC_TAFB

www.nhc.noaa.gov