

## IMPACTS FOR **D7:**

Winds – **Low** (PR & USVI, Florida), **Moderate** (Florida Lower Keys)

Storm Surge – **Low** (PR & USVI, Florida)

Rainfall/Flash Flooding – **Moderate** to **High** (PR & USVI), **Low** (Florida)

Tornadoes – **Low** (NE PR & USVI, Florida)

Waves – **Low** to **Moderate** (PR & USVI, Florida)

# TROPICAL STORM LAURA BRIEFING



3:00 PM EDT  
Friday, August 21, 2020

Prepared by:

**Jeff Lewitsky**

*Tropical Analysis and Forecast Branch  
NWS National Hurricane Center*



NHC\_TAFB

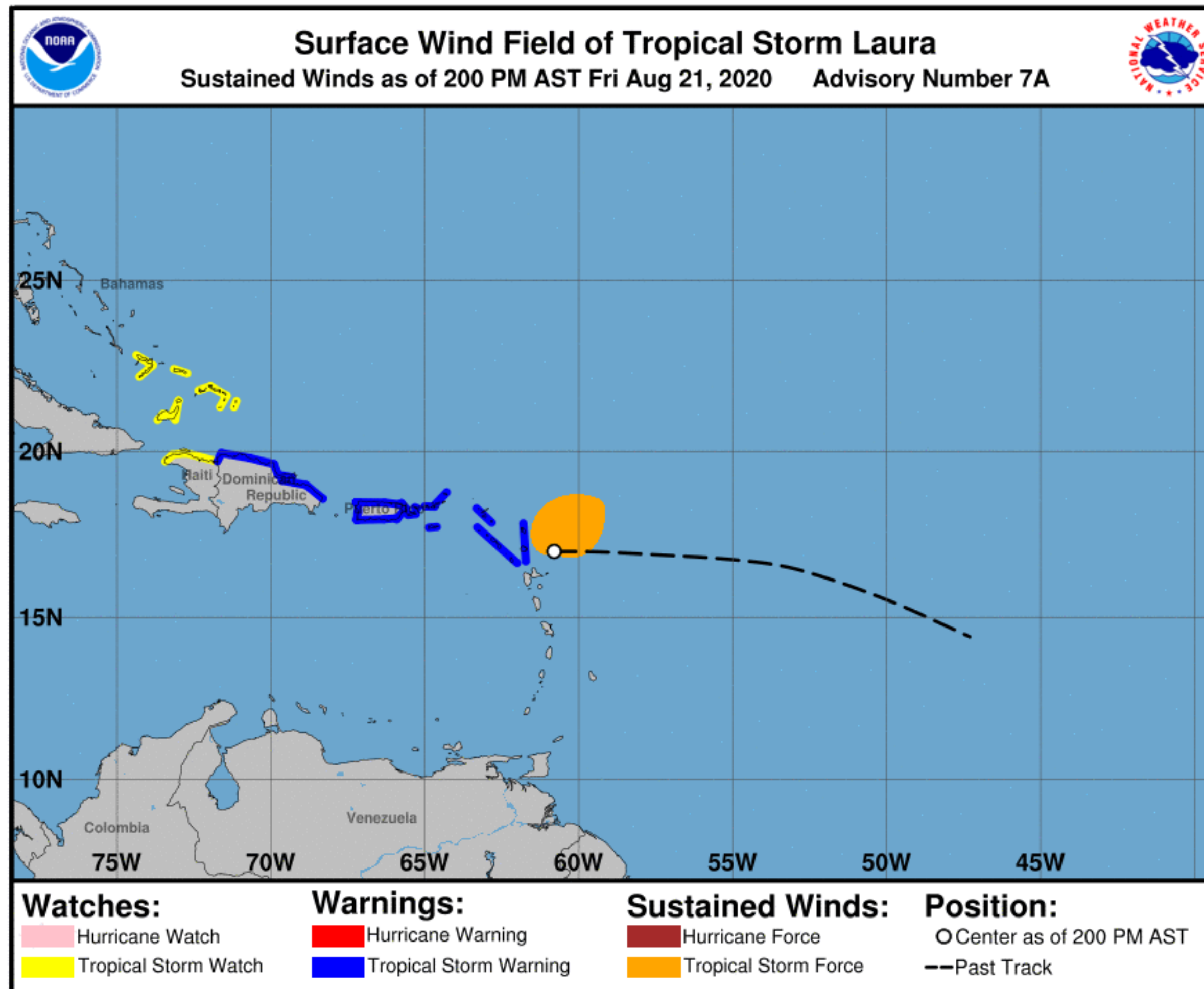
[www.nhc.noaa.gov](http://www.nhc.noaa.gov)

# Situation Overview

## Tropical Storm Laura



Tropical Analysis and Forecast Branch  
NWS National Hurricane Center



**...LAURA EXPECTED TO BRING TROPICAL STORM CONDITIONS, HEAVY RAINFALL, TO PORTIONS OF THE LEEWARD ISLANDS...**

Summary of 2 PM AST...

LOCATION...17.0N 60.8W  
ABOUT 175 MI ESE OF THE NORTHERN LEEWARD ISLANDS

MAXIMUM SUSTAINED WINDS...45 MPH

PRESENT MOVEMENT...W OR 270 DEGREES AT 18 MPH

SIZE...

34 KT.....130NE 0SE 0SW 60NW

12 FT.....60NE 0SE 0SW 0NW

Max Seas..13 FT



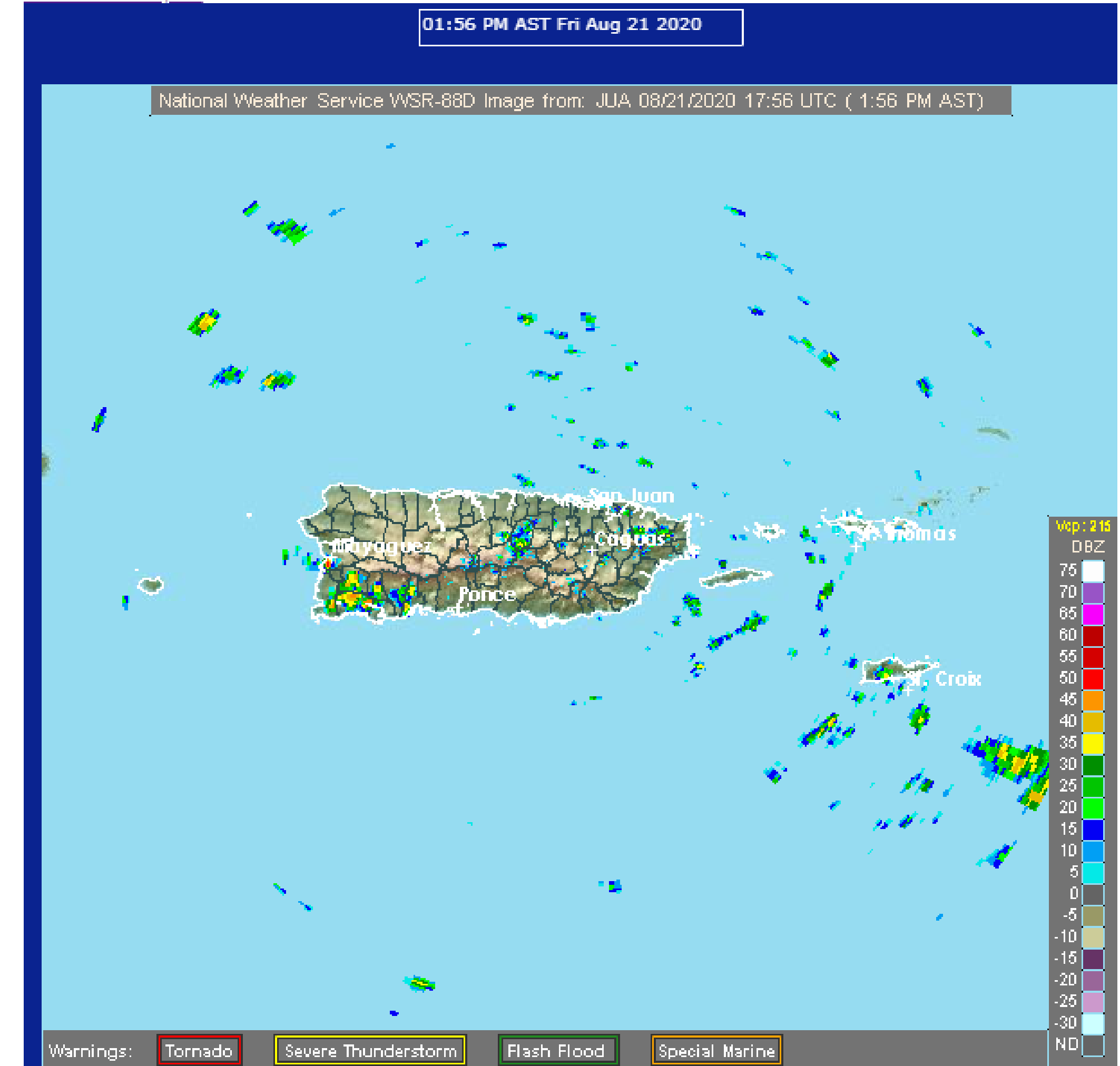
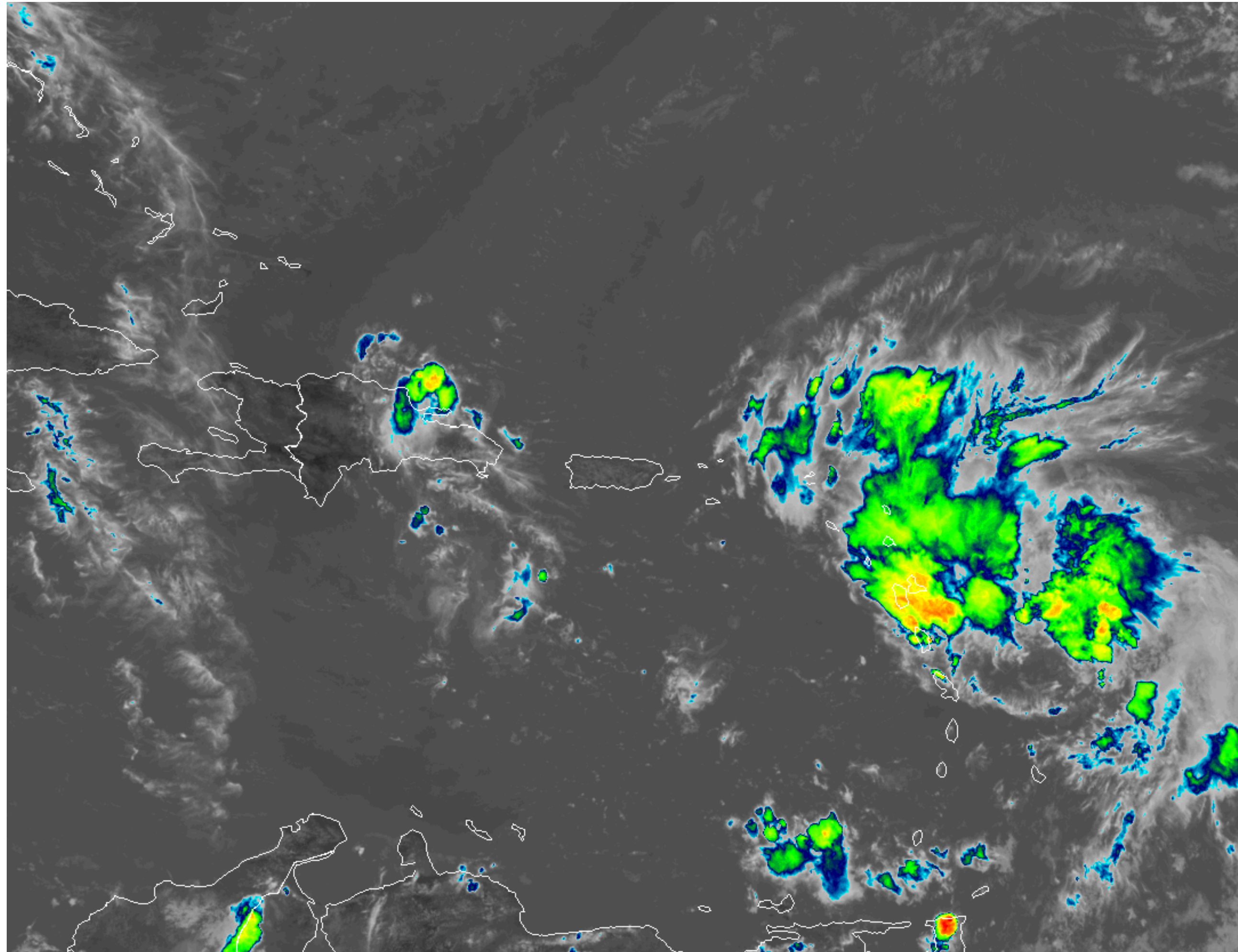
# Current Satellite and Radar

## Tropical Storm Laura



Tropical Analysis and Forecast Branch  
NWS National Hurricane Center

NWS San Juan, PR



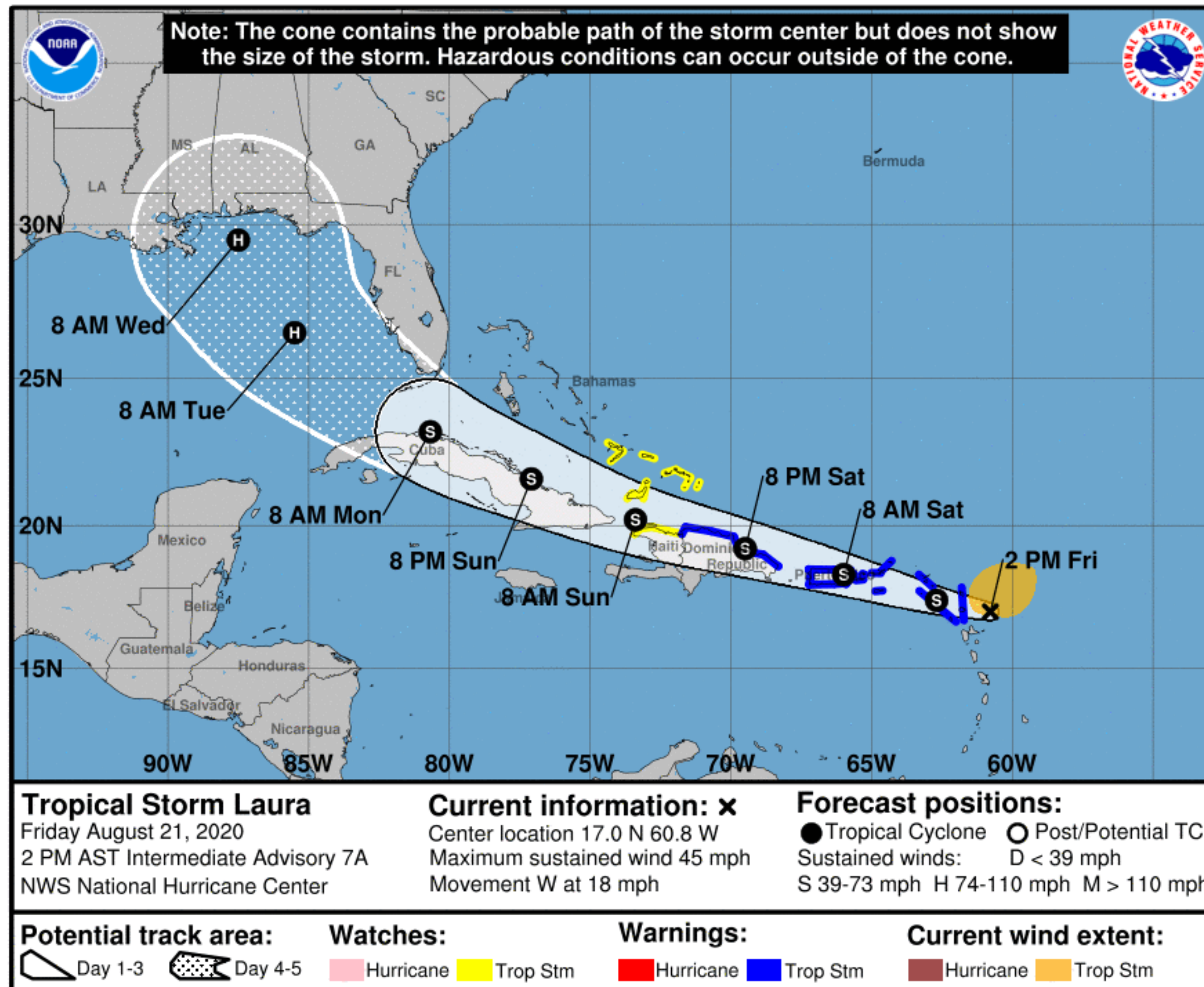


# Forecast Information

## Tropical Storm Laura



Tropical Analysis and Forecast Branch  
NWS National Hurricane Center



**NOTE:** Do not focus on the exact track. Impacts can occur well outside the area enclosed by the cone.

- Laura will move near or over Puerto Rico Saturday morning, near or over the Straits of Florida early next week.
- Some slow strengthening is forecast during the next 48 hours.
- Locally Heavy Rainfall over PR & USVI could lead to Flash and Urban Flooding, increased potential for Mudslides, River Flooding.

\*\* Swaths are calculated using average track errors and actual track may be well inside, or possibly outside the potential track areas indicated.

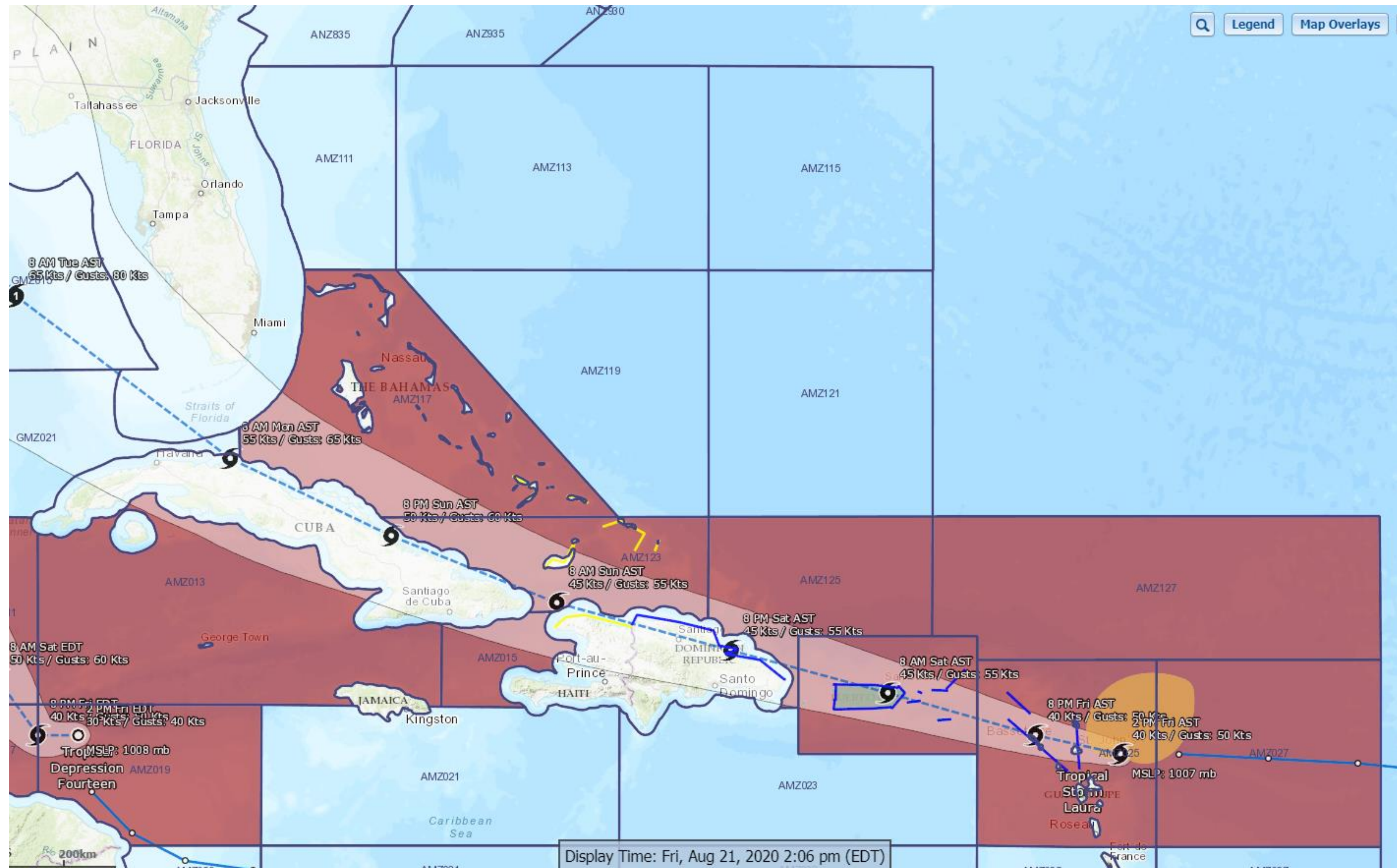


# Hazards Map

## Tropical Storm Laura



Tropical Analysis and Forecast Branch  
NWS National Hurricane Center



### Legend:

-  Tropical Storm Warning
-  Tropical Storm Force Winds
-  Flash Flood Watch

■ <https://nowcoast.noaa.gov/>

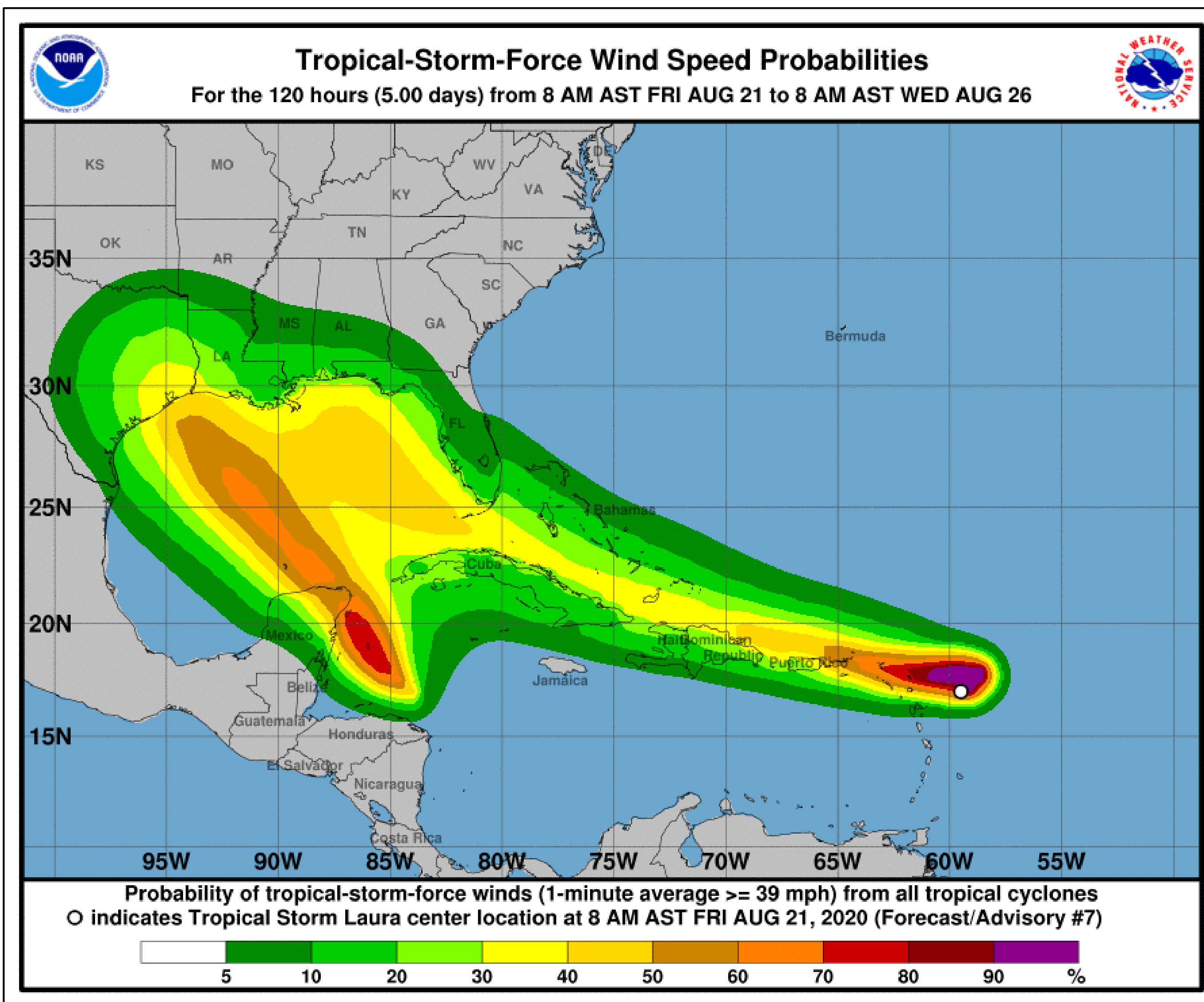


# T.S. Wind Speed Probabilities

Tropical Storm Laura



Tropical Analysis and Forecast Branch  
NWS National Hurricane Center



- St. Thomas: 55% Chance
  - San Juan: 35% Chance
  - Key West: 40% Chance
  - Miami: 20% Chance
  - Ft. Lauderdale: 15% Chance
  - West Palm Beach 10% Chance
  - Cape Canaveral: 5% Chance
  - Tampa: 20% Chance
- 
- Probabilities of sustained tropical storm force winds (34 kt to 63 kt) over the next 5 days, based off this cyclone's wind radii and track.
  - See the color bar below the image for more details.

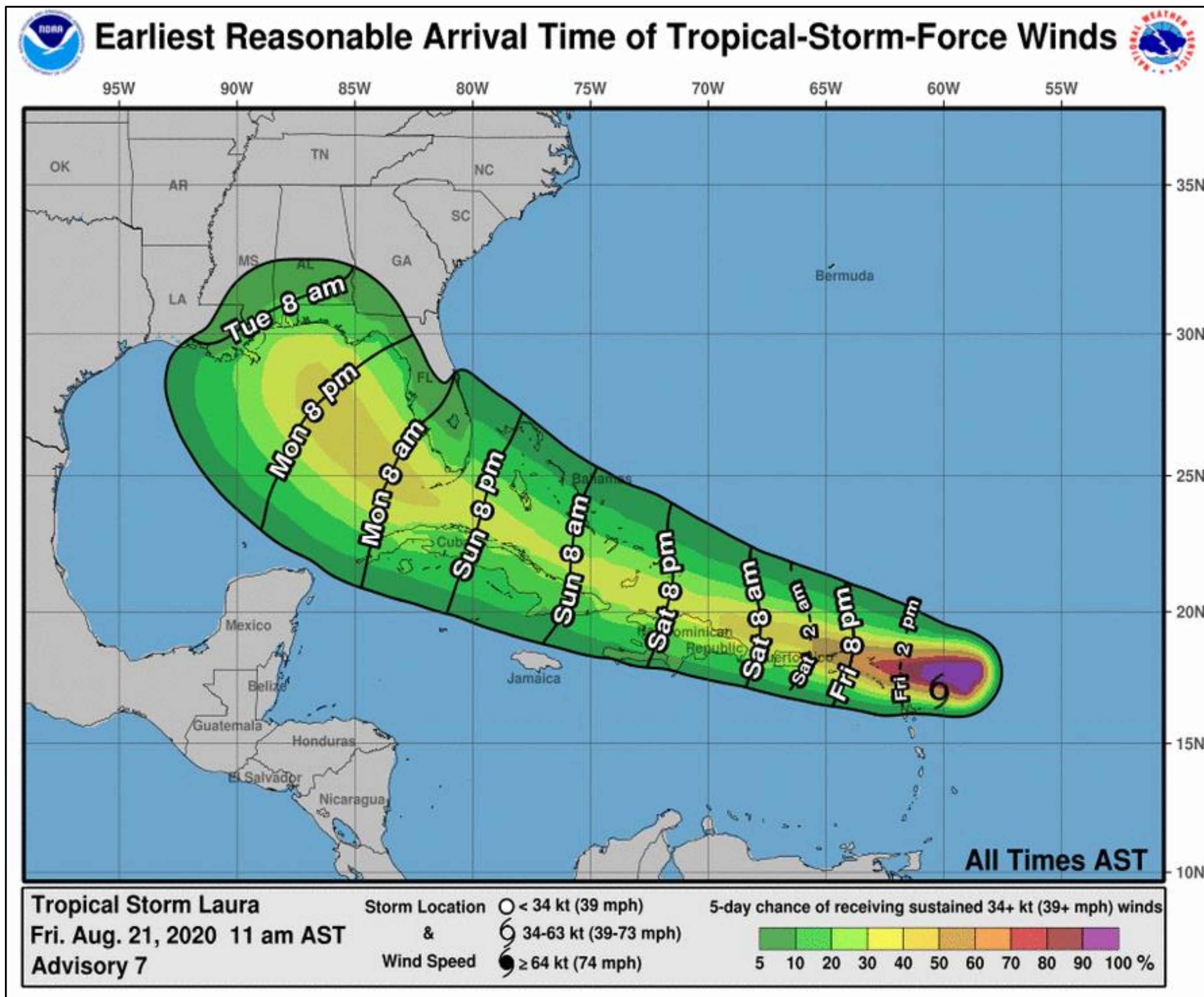


# Earliest Reasonable Time of Arrival

## Tropical Storm Laura



Tropical Analysis and Forecast Branch  
NWS National Hurricane Center



- St. Thomas: Today 8pm AST
  - San Juan: Saturday 2am AST
  - Key West: Monday 2am AST
  - Miami: Monday 2am AST
  - Ft. Lauderdale: Monday 2am AST
  - West Palm Beach Monday 2am AST
  - Cape Canaveral: Monday 8am AST
  - Tampa: Monday 2pm AST
- 
- The earliest reasonable time of arrival of Tropical Storm Force Winds (34kt to 63 kt) for this cyclone based off the current track and wind radii.
  - See the color bar below the image for more details.

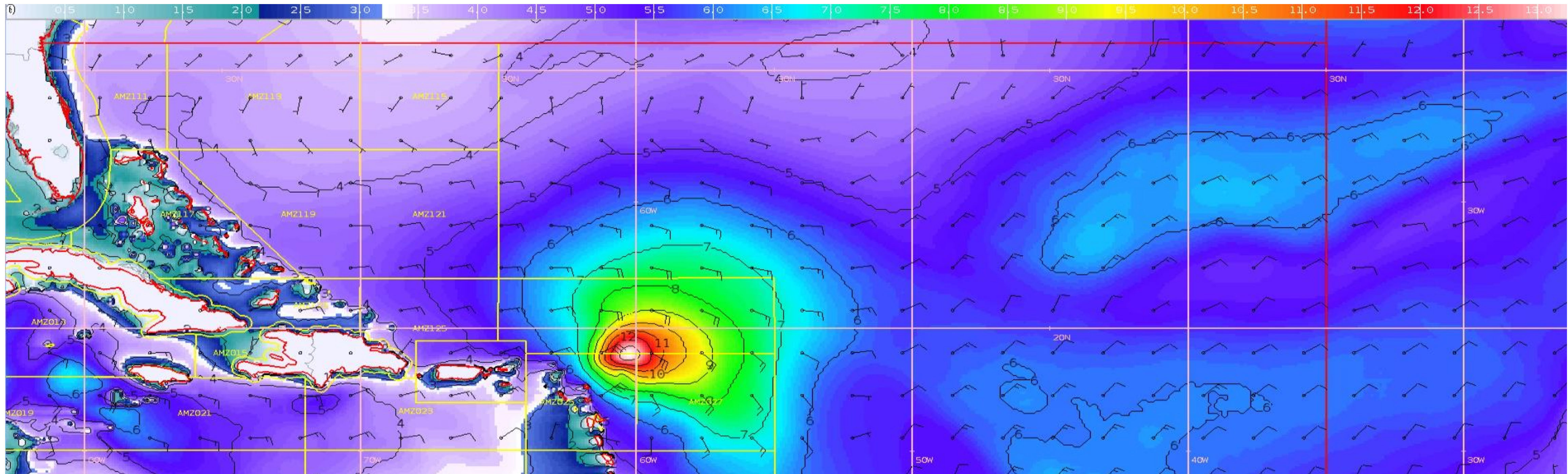


# Wind And Waves

## Tropical Storm Laura



Tropical Analysis and Forecast Branch  
NWS National Hurricane Center



2pm AST Friday, August 21<sup>st</sup>

Peak Winds: 40 KT

Peak Seas: 13 FT

- Wave heights are in feet

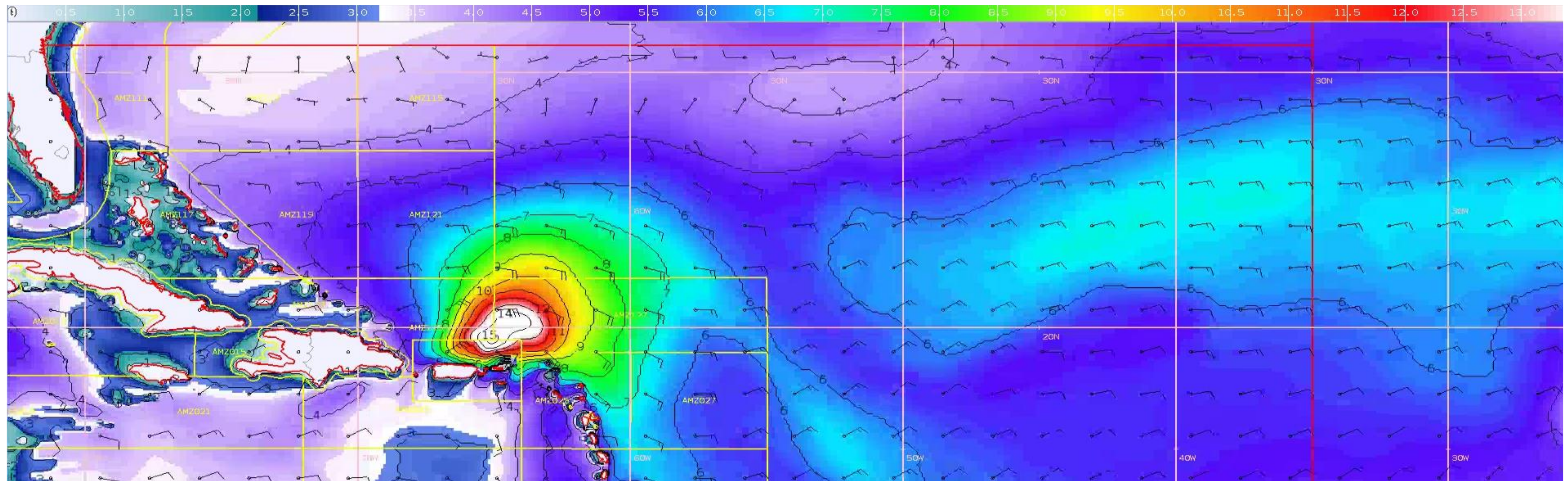


# Wind And Waves

## Tropical Storm Laura



Tropical Analysis and Forecast Branch  
NWS National Hurricane Center



8am AST, Saturday, August 22<sup>nd</sup>

Peak Winds: 45 KT

Peak Seas: 16 FT

- Wave heights are in feet

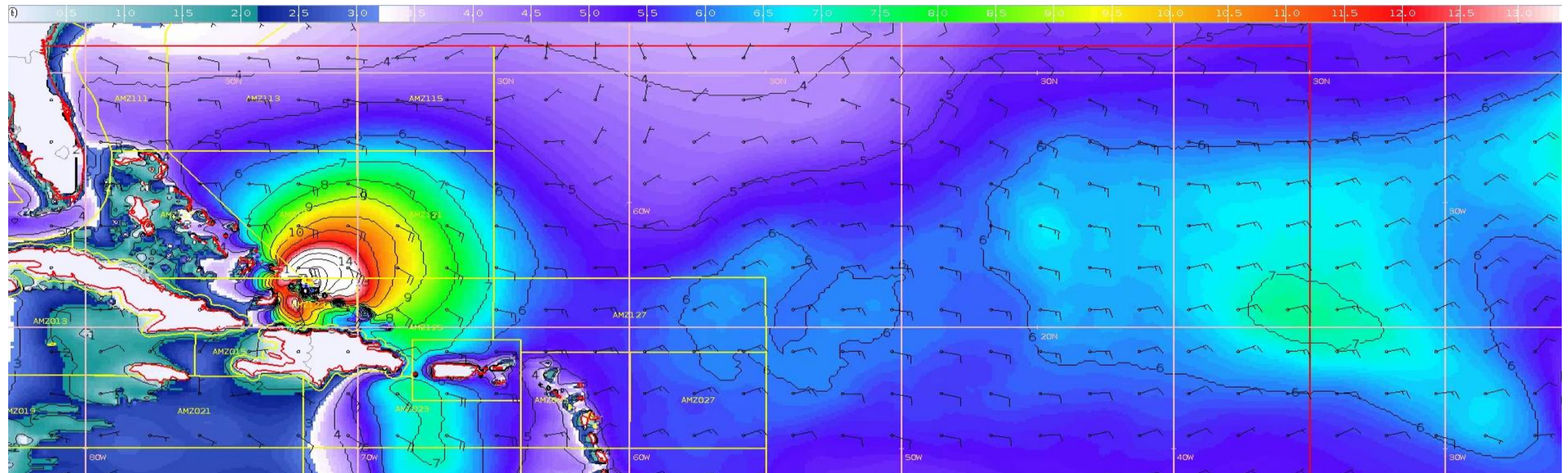


# Wind And Waves

## Tropical Storm Laura



Tropical Analysis and Forecast Branch  
NWS National Hurricane Center



8am AST, Sunday, August 23<sup>rd</sup>

Peak Winds: 45 KT

Peak Seas: 18 FT

- Wave heights are in feet

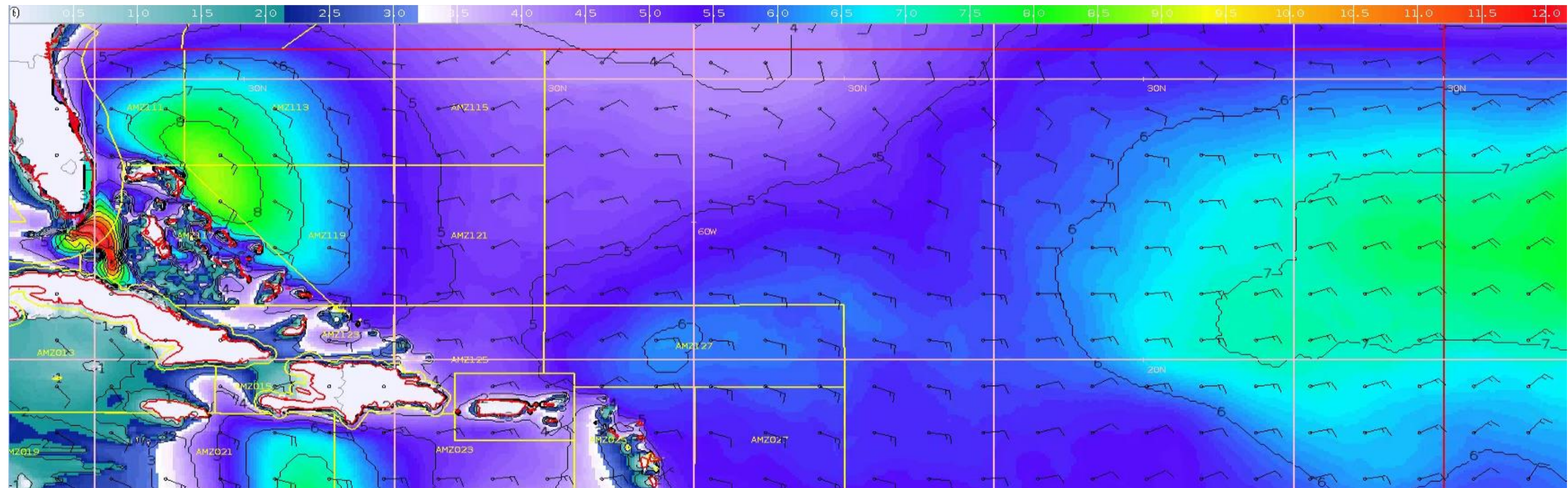


# Wind And Waves

## Tropical Storm Laura



Tropical Analysis and Forecast Branch  
NWS National Hurricane Center



8am AST, Monday, August 24<sup>th</sup>

Peak Winds: 55 KT

Peak Seas: 18 FT

- Wave heights are in feet



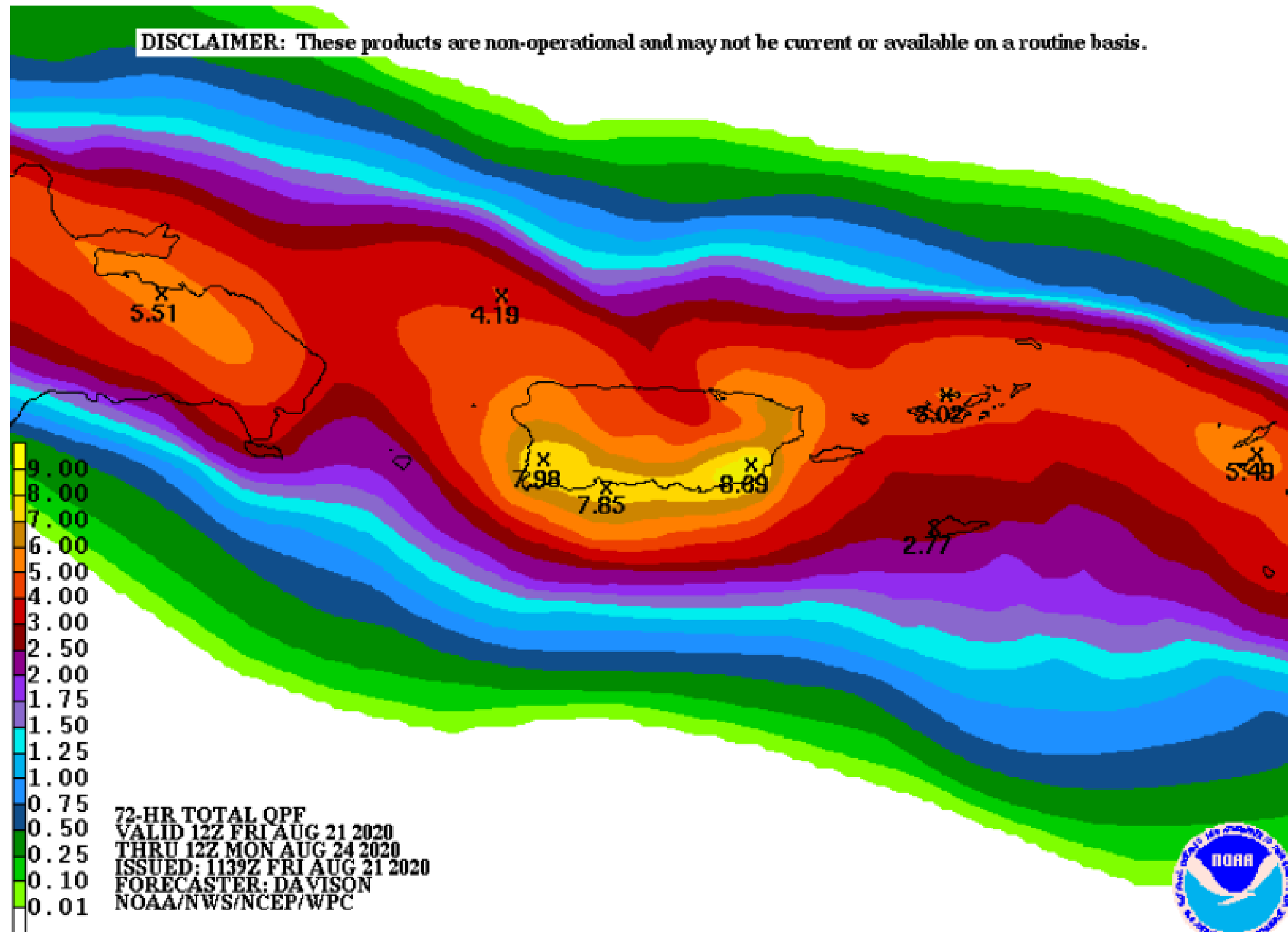
# Expected Storm Total Rainfall

Tropical Storm Laura



Tropical Analysis and Forecast Branch  
NWS National Hurricane Center

DISCLAIMER: These products are non-operational and may not be current or available on a routine basis.



- Total rainfall in inches through 8am AST, Monday, August 24<sup>th</sup>

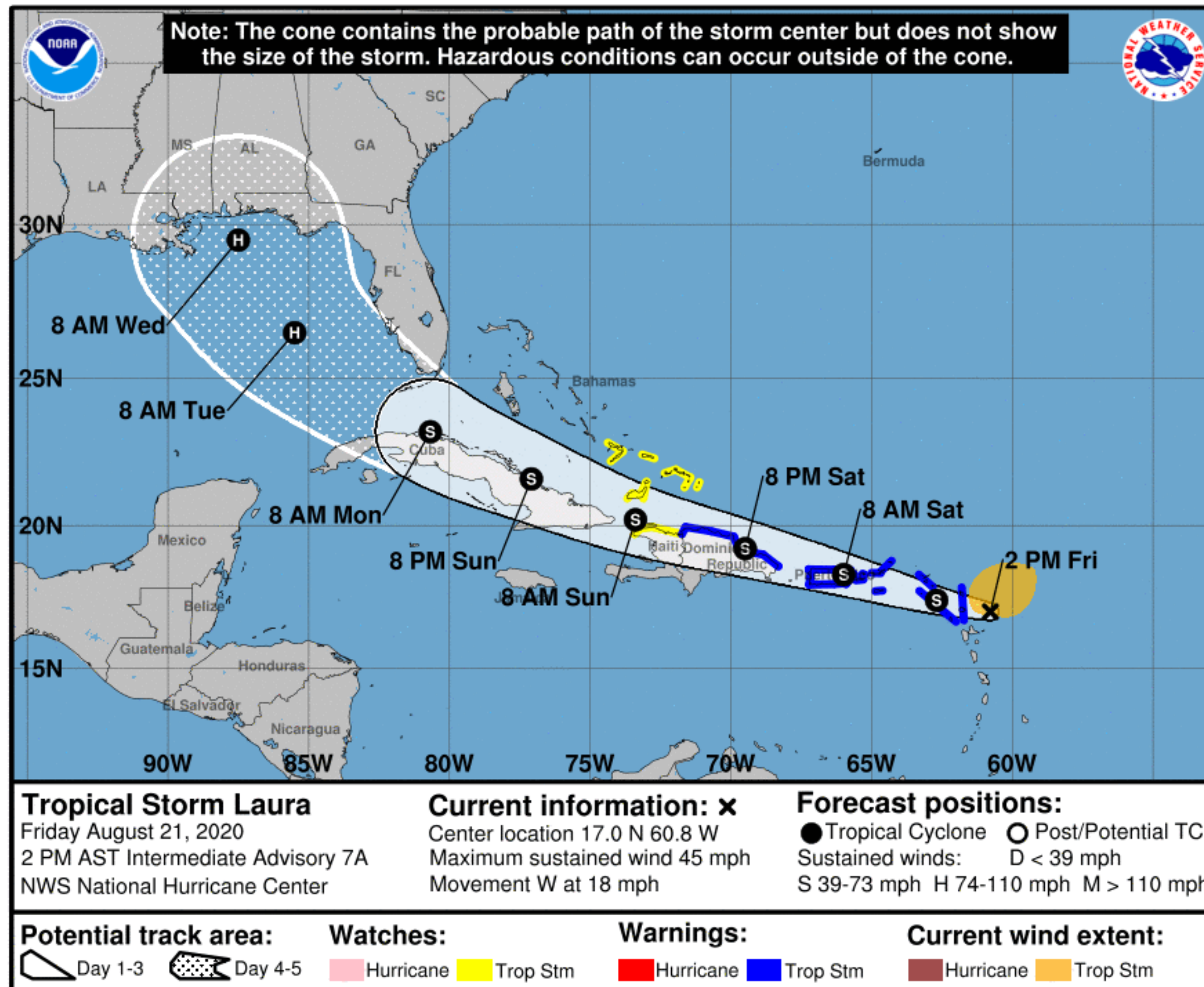


# Key Messages

## Tropical Storm Laura



Tropical Analysis and Forecast Branch  
NWS National Hurricane Center



- **Marine Key Messages:**
- Strength: Slow strengthening
- Movement: W-NW
- Peak Seas: 13 FT building to 18 FT
- Rainfall: 6-8 inches PR & USVI
- Uncertainty due to interaction with land



## IMPACTS FOR **D7:**

Winds – **Low** (PR & USVI, Florida), **Moderate** (Florida Lower Keys)

Storm Surge – **Low** (PR & USVI, Florida)

Rainfall/Flash Flooding – **Moderate** to **High** (PR & USVI), **Low** (Florida)

Tornadoes – **Low** (NE PR & USVI, Florida)

Waves – **Low** to **Moderate** (PR & USVI, Florida)



# TROPICAL STORM LAURA BRIEFING

You can contact the Tropical Analysis and Forecast Branch at  
305-229-4424

*The Next Briefing Will Be:  
Saturday 8:15 AM EDT (or as needed)*

*You can always find get the latest graphics and information for this storm at [www.hurricanes.gov](http://www.hurricanes.gov)*



NHC\_TAFB

[www.nhc.noaa.gov](http://www.nhc.noaa.gov)