

**IMPACTS FOR D7/D8 (through next 5 days)**

**Winds – High to Extreme**

**Storm Surge – High to Extreme**

**Rainfall/Flash Flooding – High**

**Tornadoes – Low to Medium**

**Waves - Extreme**

# HURRICANE IAN BRIEFING

9:00 AM EDT

Monday, September 26, 2022

Prepared by:

**Amanda Reinhart**

*Tropical Analysis and Forecast Branch  
NWS National Hurricane Center*



NHC\_TAFB

[www.nhc.noaa.gov](http://www.nhc.noaa.gov)

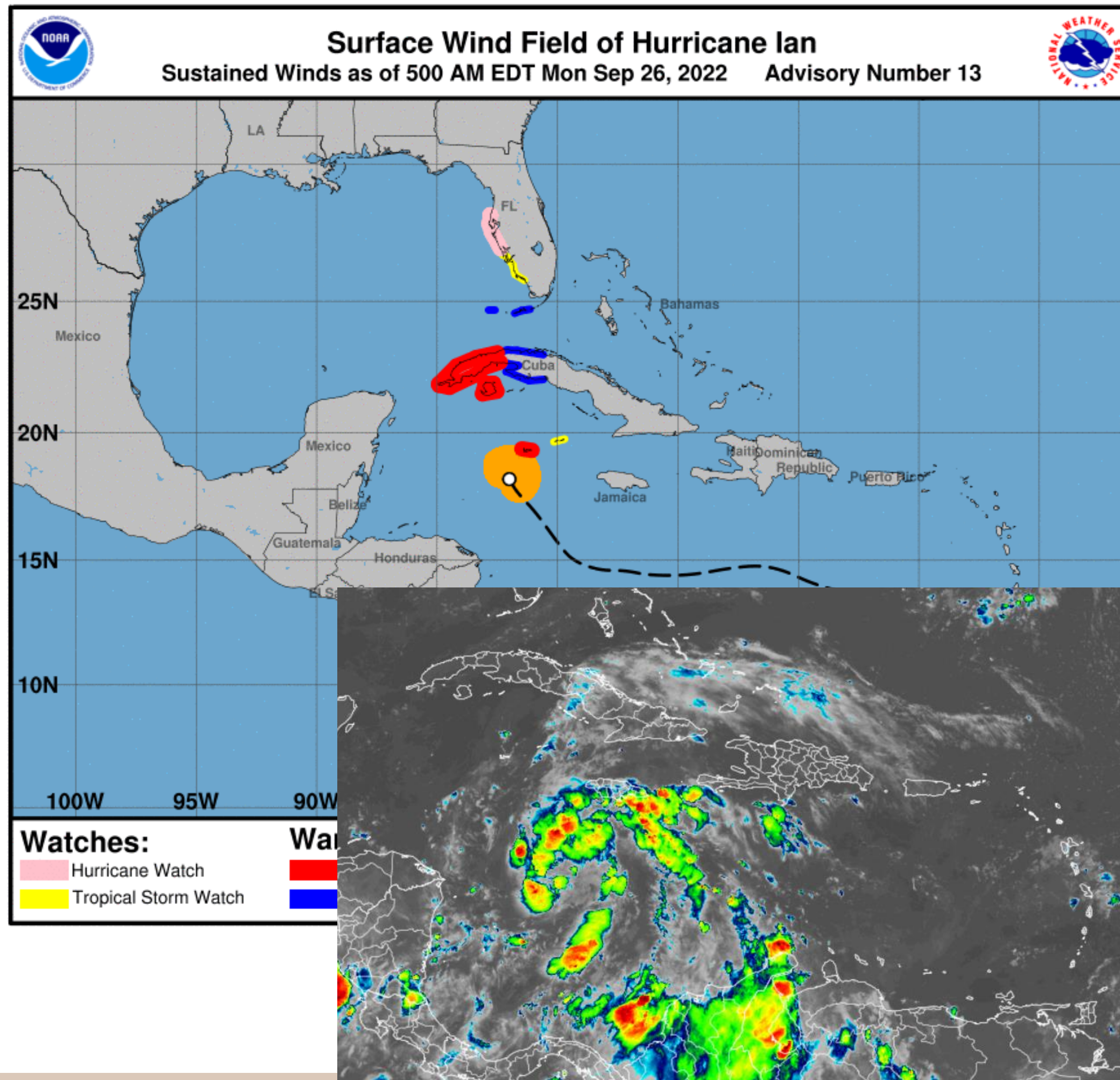


# Situation Overview

## Hurricane Ian



Tropical Analysis and Forecast Branch  
NWS National Hurricane Center



**...IAN BECOMES A HURRICANE AND  
ADDITIONAL RAPID STRENGTHENING IS  
EXPECTED TODAY...**

**...EXPECTED TO PRODUCE SIGNIFICANT  
WIND AND STORM SURGE IMPACTS  
IN WESTERN CUBA...**

### Summary of 800 AM EDT Information

Location... 18.2N 82.0W

About 80 nm...SW of GRAND CAYMAN

About 275 nm...SE of the western tip of Cuba

Maximum Sustained Winds... 65 kt

Present Movement... NW 10 kt

Minimum Central Pressure... 983 mb

Peak Seas... 18 ft

12 FT SEAS... 60NE 30SE 30SW 60NW.

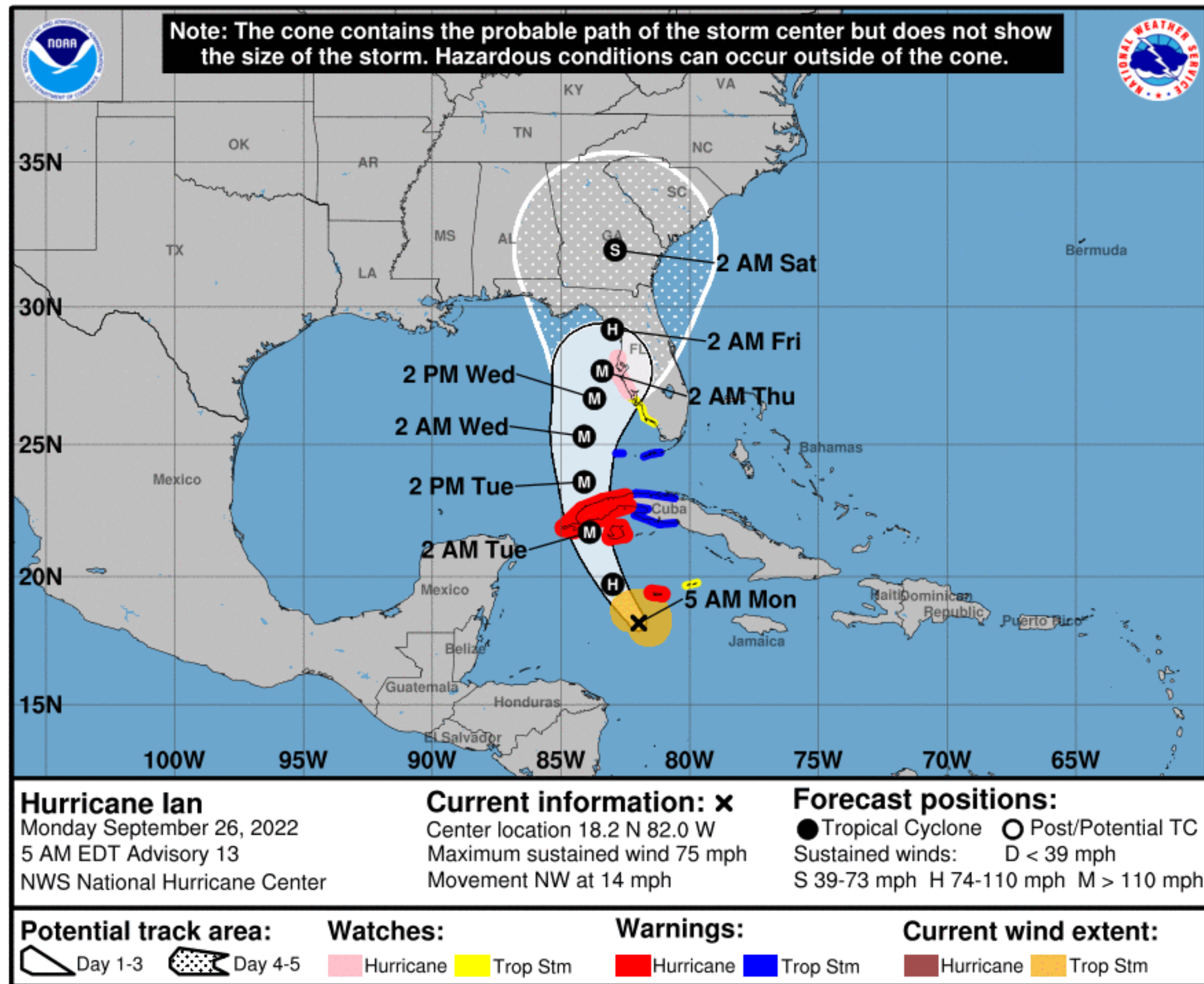


# Forecast Information

## Hurricane Ian



Tropical Analysis and Forecast Branch  
NWS National Hurricane Center



**NOTE:** Do not focus on the exact track. Impacts can occur well outside the area enclosed by the cone.

- A turn toward the NNW is expected later today, then moving northward on Tue with a slightly slower forward speed.
- A turn toward the NNE expected on Tue night/Wed morning.
- Ian is expected to move over western Cuba as a major hurricane late tonight and emerge into the southeast Gulf by Tue morning.
- Uncertainty is still high in regards to exactly where landfall will occur, but significant impacts are expected along the west coast of Florida and the Florida Panhandle by the middle of this week
- Current center forecast positions through the next 5 days (if applicable) illustrated by dots
- White swath of potential track error added to each side of the forecast track through day 3
- Hatched swath of potential track error added to each side of the forecast track days 4-5

\*\* Swaths are calculated using average track errors and actual track may be well inside, or possibly outside the potential track areas indicated.

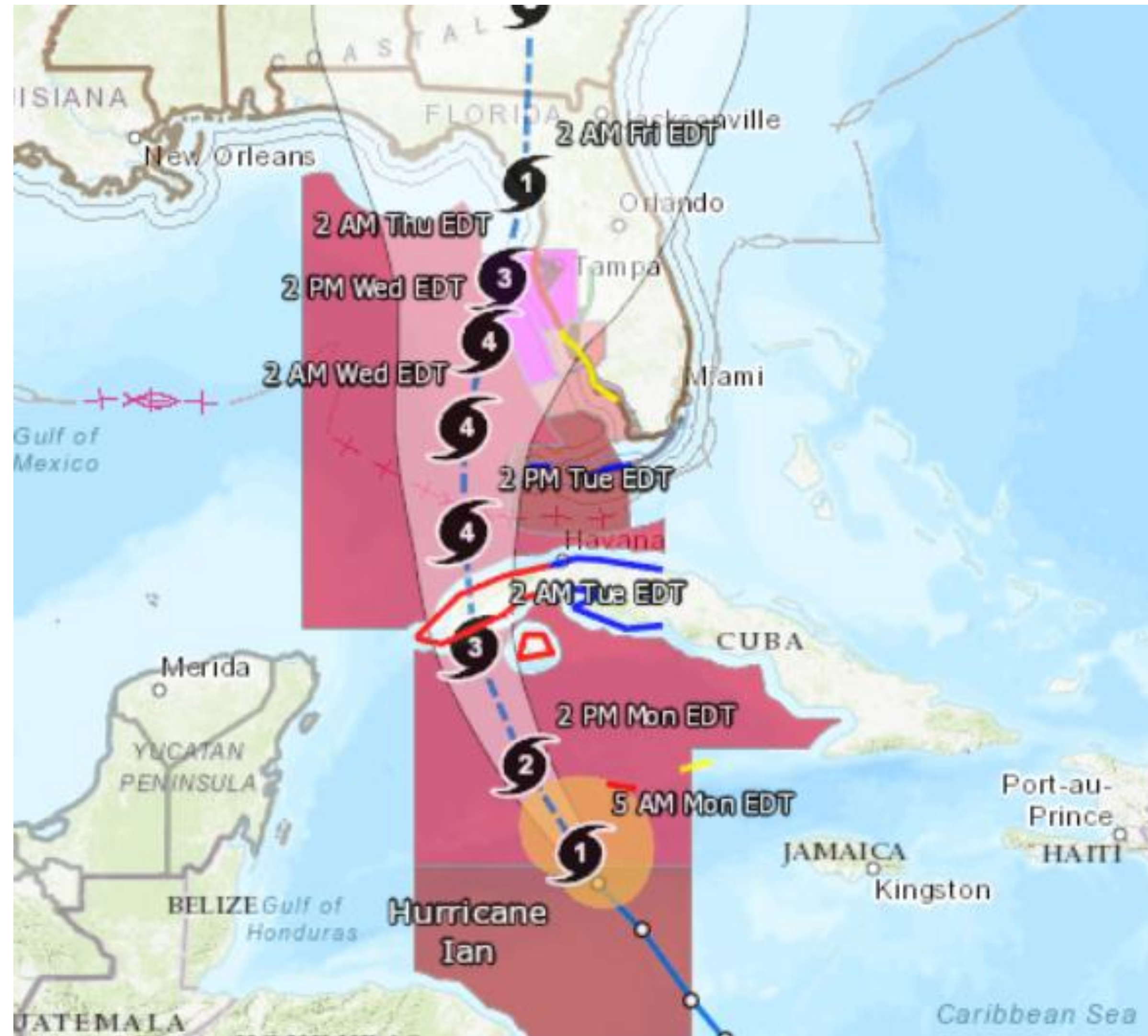


# Hazards Map

Hurricane Ian



Tropical Analysis and Forecast Branch  
NWS National Hurricane Center

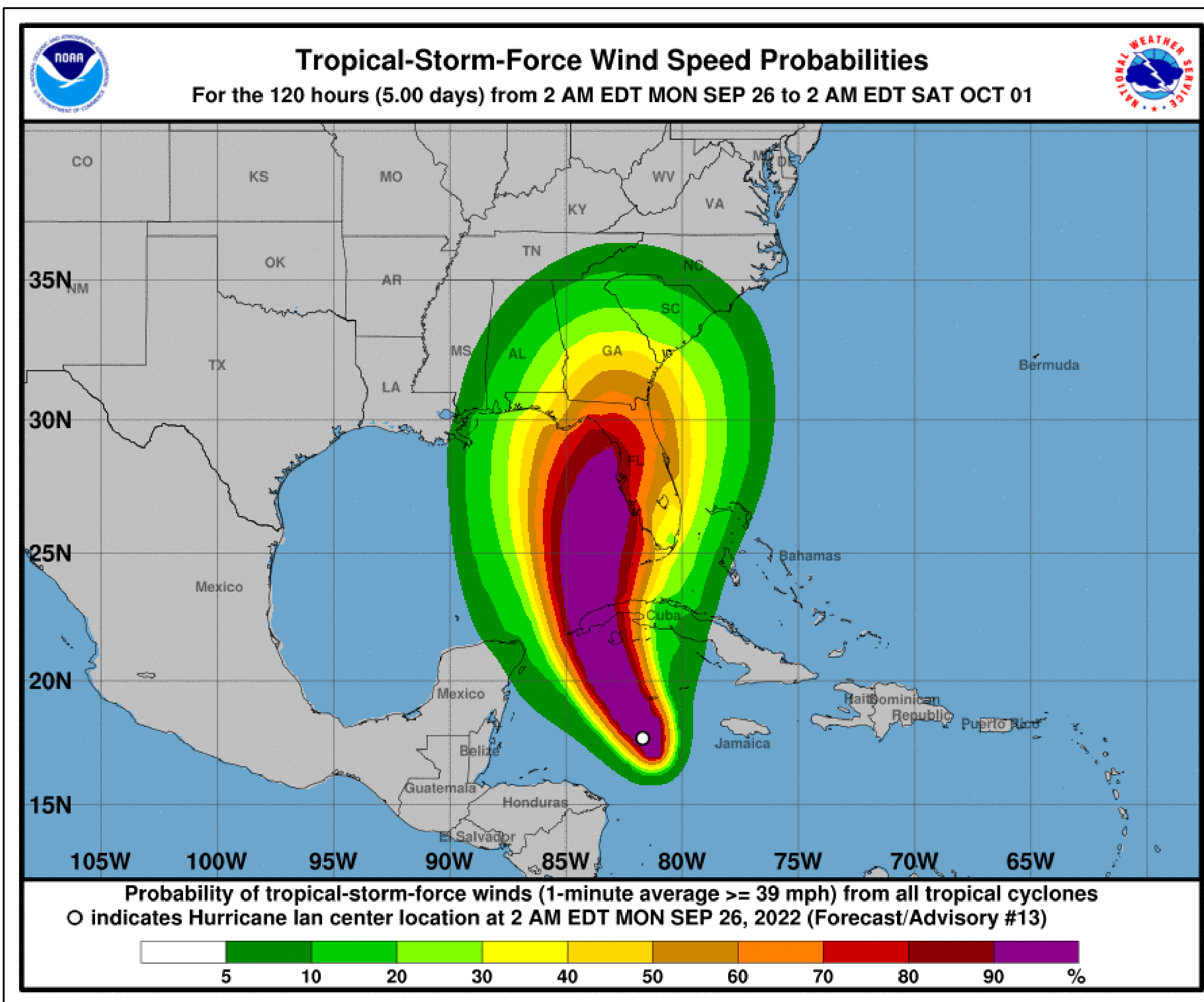


# T.S. Wind Speed Probabilities

Hurricane Ian



Tropical Analysis and Forecast Branch  
NWS National Hurricane Center



- **JACKSONVILLE – 60%**
  - **DAYTONA BEACH – 60%**
  - **COCOA BEACH – 60%**
  - **PATRICK AFB – 65%**
  - **FT PIERCE – 55%**
  - W PALM BEACH – 45%
  - FT LAUDERDALE – 40%
  - MIAMI – 30%
  - HOMESTEAD ARB – 30%
  - **MARATHON – 50%**
  - **KEY WEST – 70%**
  - **NAPLES – 80%**
  - **FT MYERS – 70%**
  - **VENICE – 95%**
  - **TAMPA – 90%**
  - **CEDAR KEY – 85%**
  - **TALLAHASSEE – 50%**
  - **ST MARKS – 55%**
  - **APALACHICOLA – 60%**
  - **PANAMA CITY – 50%**
  - CHARLESTON SC – 30%
  - BEAUFORT – 40%
  - SAVANNAH – 40%
  - KINGS BAY – 35%
  - **MAYPORT – 60%**
  - DESTIN – 30%
  - WHITING FIELD – 20%
  - PENSACOLA – 20%
  - MOBILE – 10%
  - GULFPORT – 5%
- Probabilities of sustained tropical storm force winds (34 kt to 63 kt) over the next 5 days, based off this cyclone's wind radii and track.
  - Clear or dark green are the lowest chances of 0-30%.
  - Yellow to orange is 31-70%
  - Red through purple are the highest probabilities of 71%-100%
  - See the color bar below the image for more details.

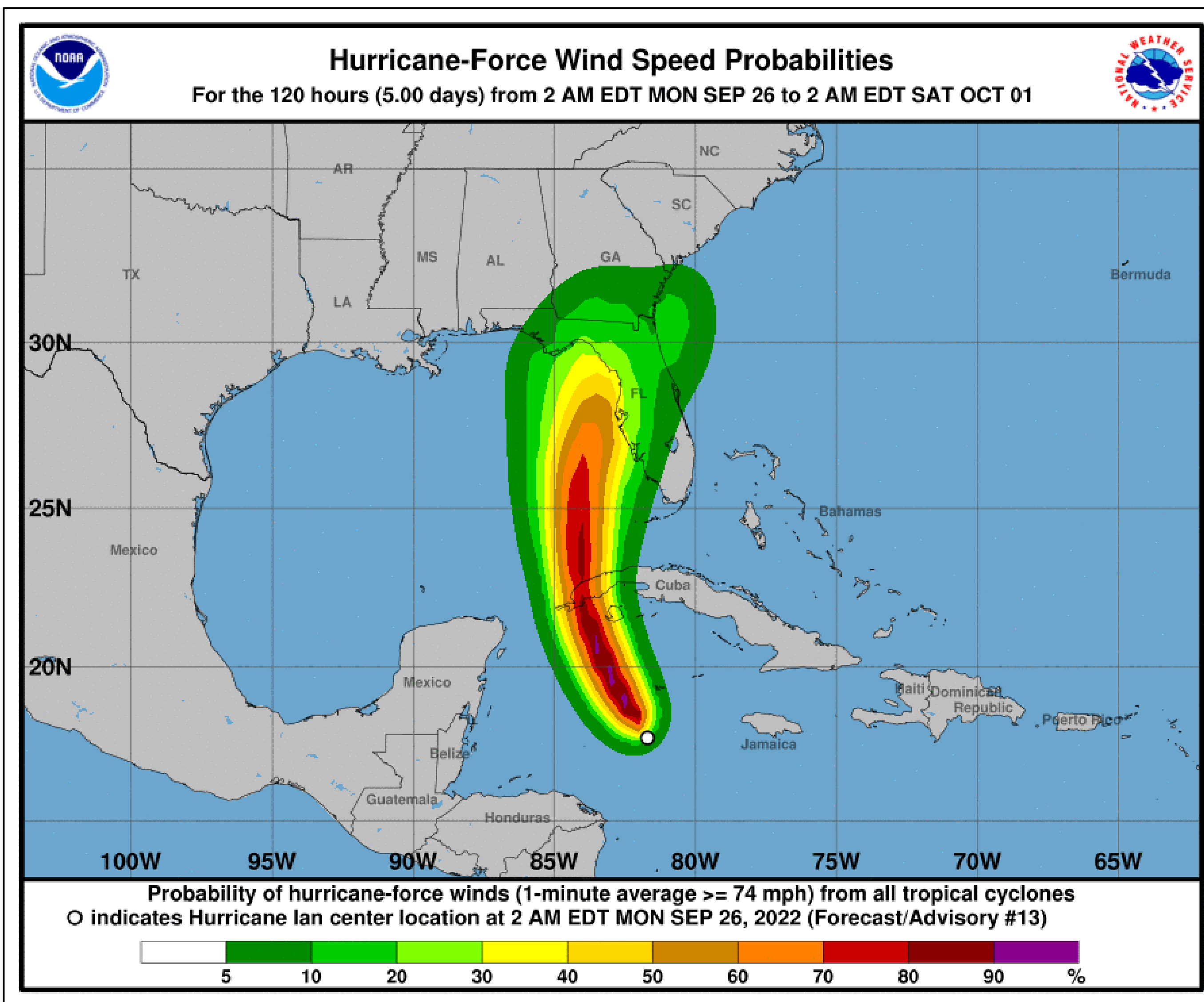


# Hurricane Wind Speed Probabilities

Hurricane Ian



Tropical Analysis and Forecast Branch  
NWS National Hurricane Center



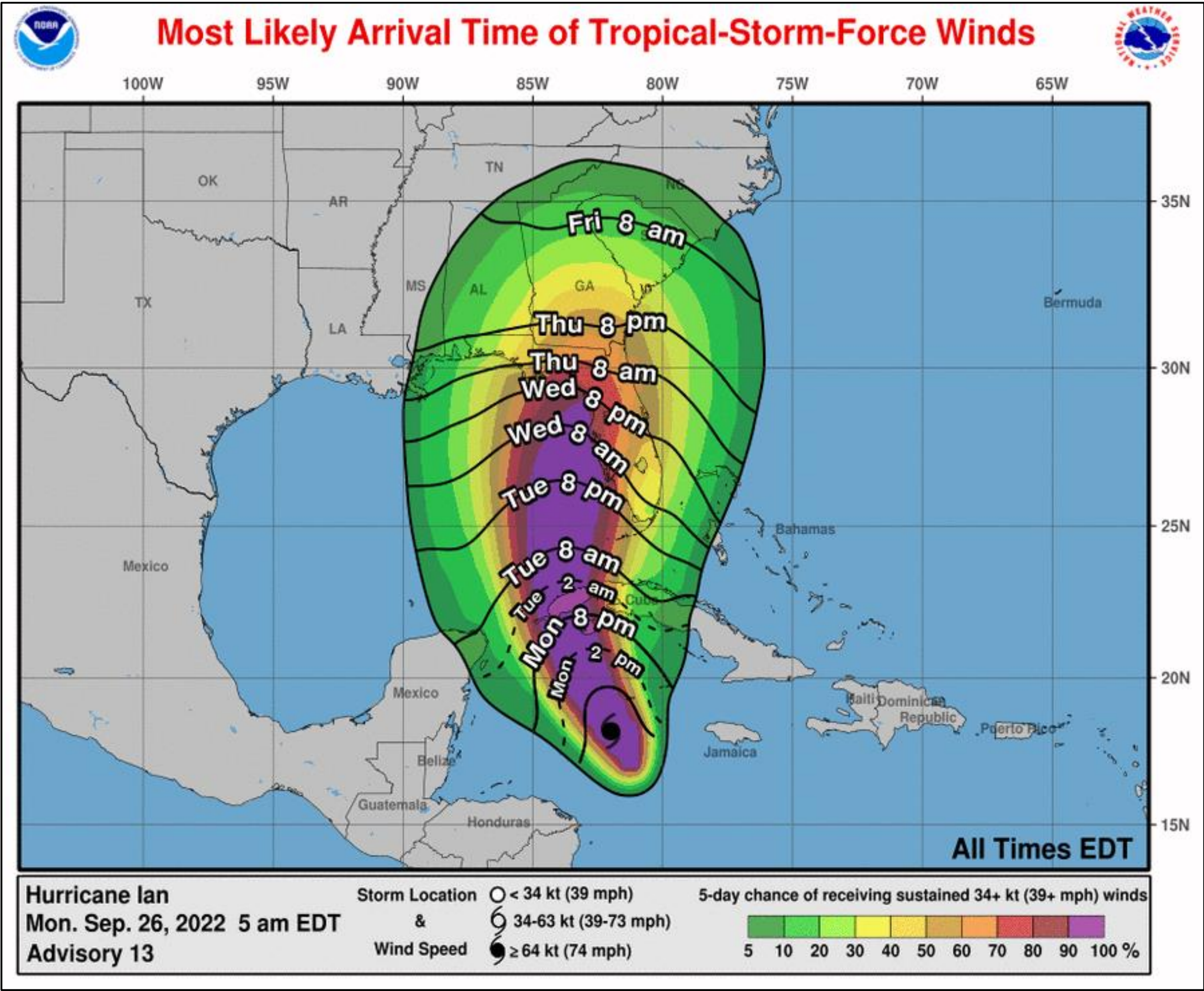
- CHARLESTON SC - 5%
- BEAUFORT - 5%
- SAVANNAH - 5%
- KINGS BAY - 10%
- MAYPORT - 15%
- JACKSONVILLE - 10%
- DAYTONA BEACH - 10%
- COCOA BEACH - 10%
- PATRICK AFB - 10%
- FT PIERCE - 5%
- KEY WEST - 10%
- NAPLES - 15%
- FT MYERS - 15%
- **VENICE - 40%**
- **TAMPA - 40%**
- **CEDAR KEY - 35%**
- TALLAHASSEE - 10%
- ST MARKS - 15%
- APALACHICOLA - 15%
- PANAMA CITY - 10%

- Probabilities of sustained hurricane force winds (64 kt +) over the next 5 days, based off this cyclone's wind radii and track.
- Clear or dark green are the lowest chances of 0-30%.
- Yellow to orange is 31-70%
- Red through purple are the highest probabilities of 71%-100%
- See the color bar below the image for more details.





Hurricane Ian



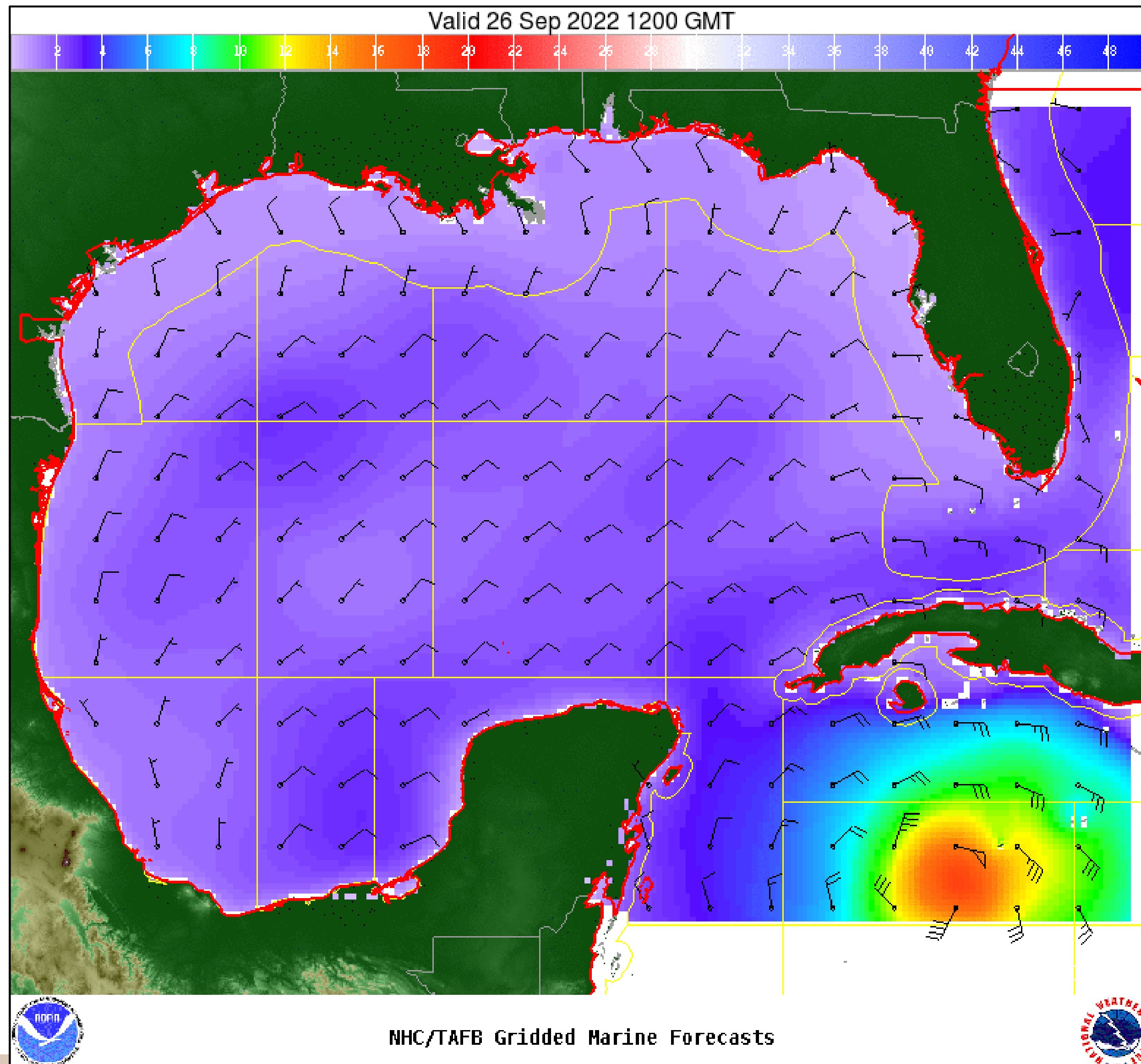
- Florida Keys – midday Tuesday
- Ft. Myers/Sarasota – Tuesday night
- Tampa – Wednesday morning
- Big Bend – Wednesday night
- The most likely time of arrival of Tropical Storm Force Winds (34kt to 63 kt) for this cyclone based off the current track and wind radii.
- Clear or dark green are the lowest chances of 0-30%.
- Yellow to orange is 31-70%
- Red through purple are the highest probabilities of 71%-100%
- See the color bar below the image for more details.



# Wind And Waves



Tropical Analysis and Forecast Branch  
NWS National Hurricane Center



## Current Conditions

8 am EDT, Monday, September 26

Peak Winds: 64 kt

Peak Seas: 18 ft

- Wave heights are in feet



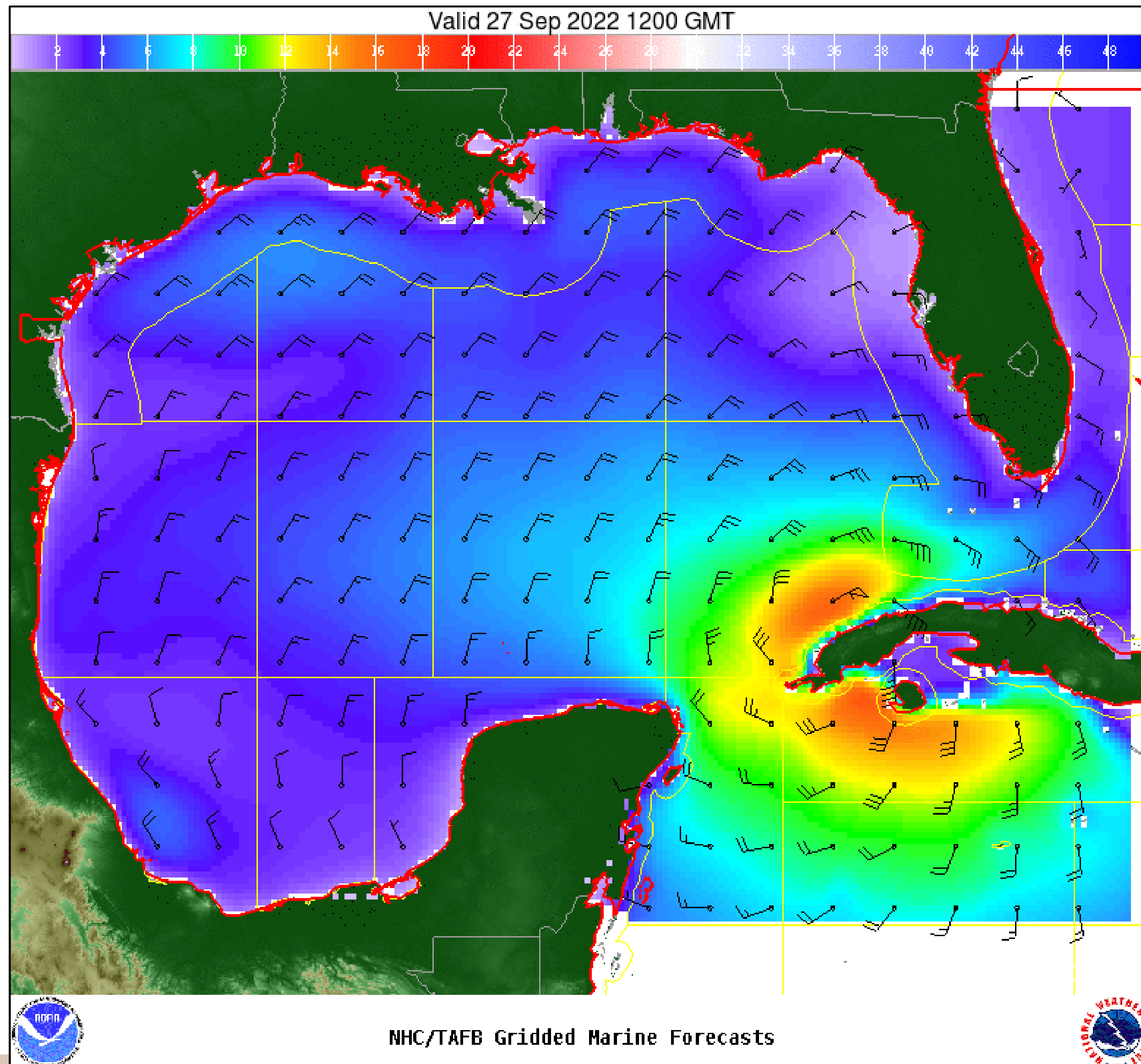
Significant Wave Height (ft)



# Wind And Waves



Tropical Analysis and Forecast Branch  
NWS National Hurricane Center



## 24 Hour Forecast

8 am EDT, Tuesday, September 27

Peak Winds: 110 kt

Peak Seas: 15 ft (SE Gulf)

- Wave heights are in feet



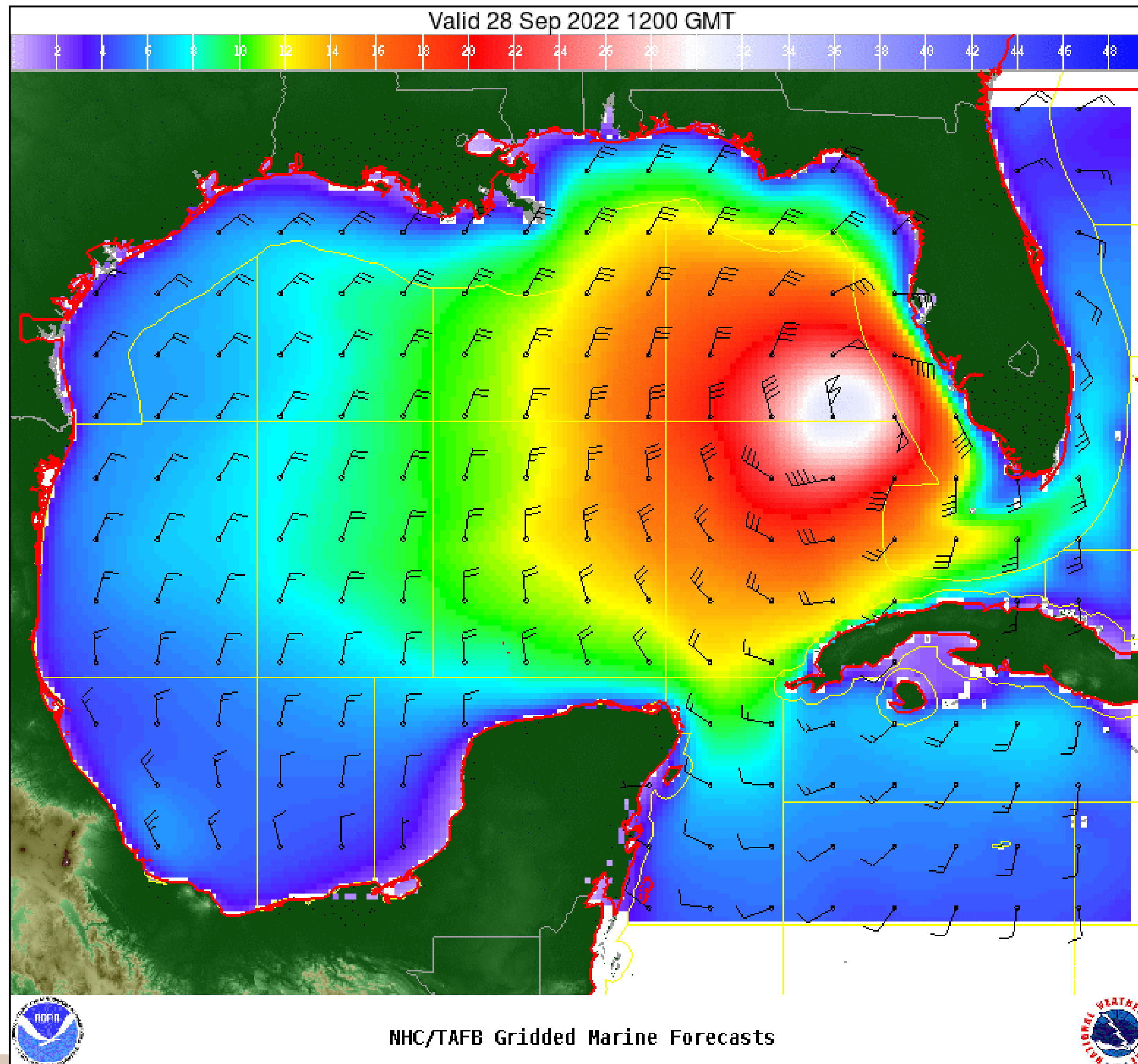
Significant Wave Height (ft)



# Wind And Waves



Tropical Analysis and Forecast Branch  
NWS National Hurricane Center



48 Hour Forecast

8 am EDT, Wednesday, September 27

Peak Winds: 120 kt

Peak Seas: 30 ft

■ Wave heights are in feet



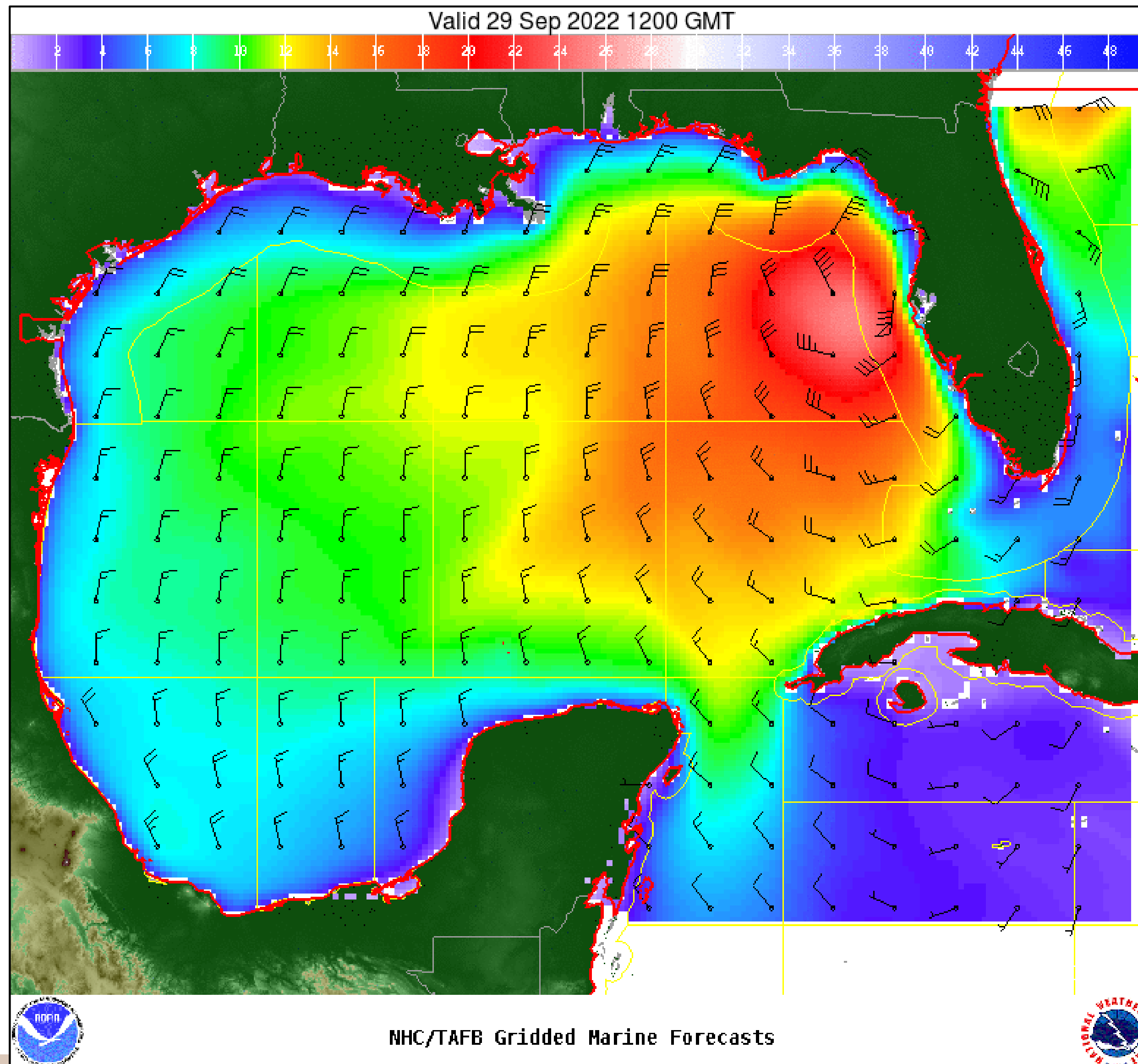
Significant Wave Height (ft)



# Wind And Waves



Tropical Analysis and Forecast Branch  
NWS National Hurricane Center



72 Hour Forecast

8 am EDT, Wednesday, September 29

Peak Winds: 90 kt

Peak Seas: 25 ft

■ Wave heights are in feet



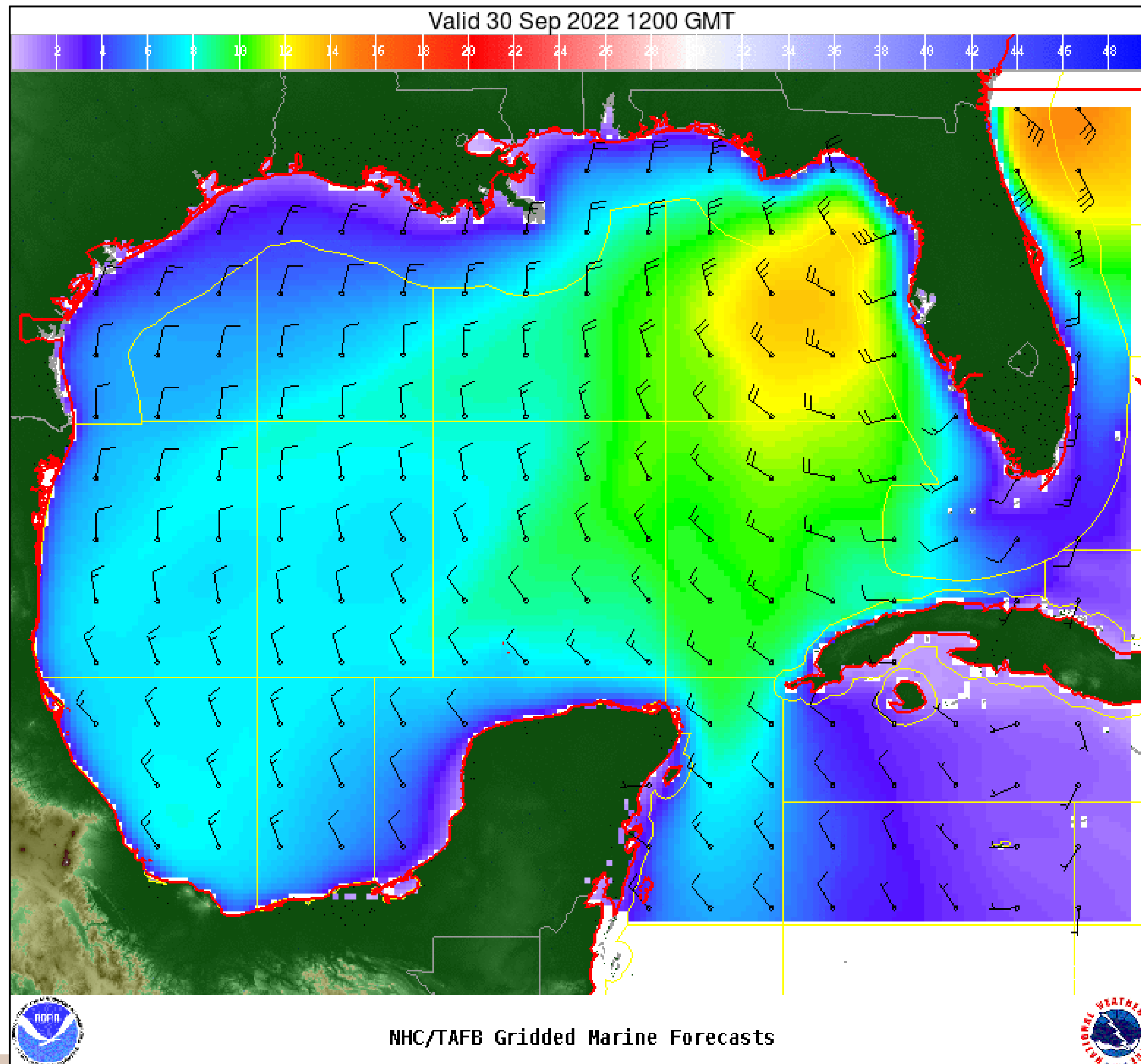
Significant Wave Height (ft)



# Wind And Waves



Tropical Analysis and Forecast Branch  
NWS National Hurricane Center



96 Hour Forecast

8 am EDT, Thu, September 30

Peak Winds: 40 kt

Peak Seas: 15 ft (on both coasts)

■ Wave heights are in feet



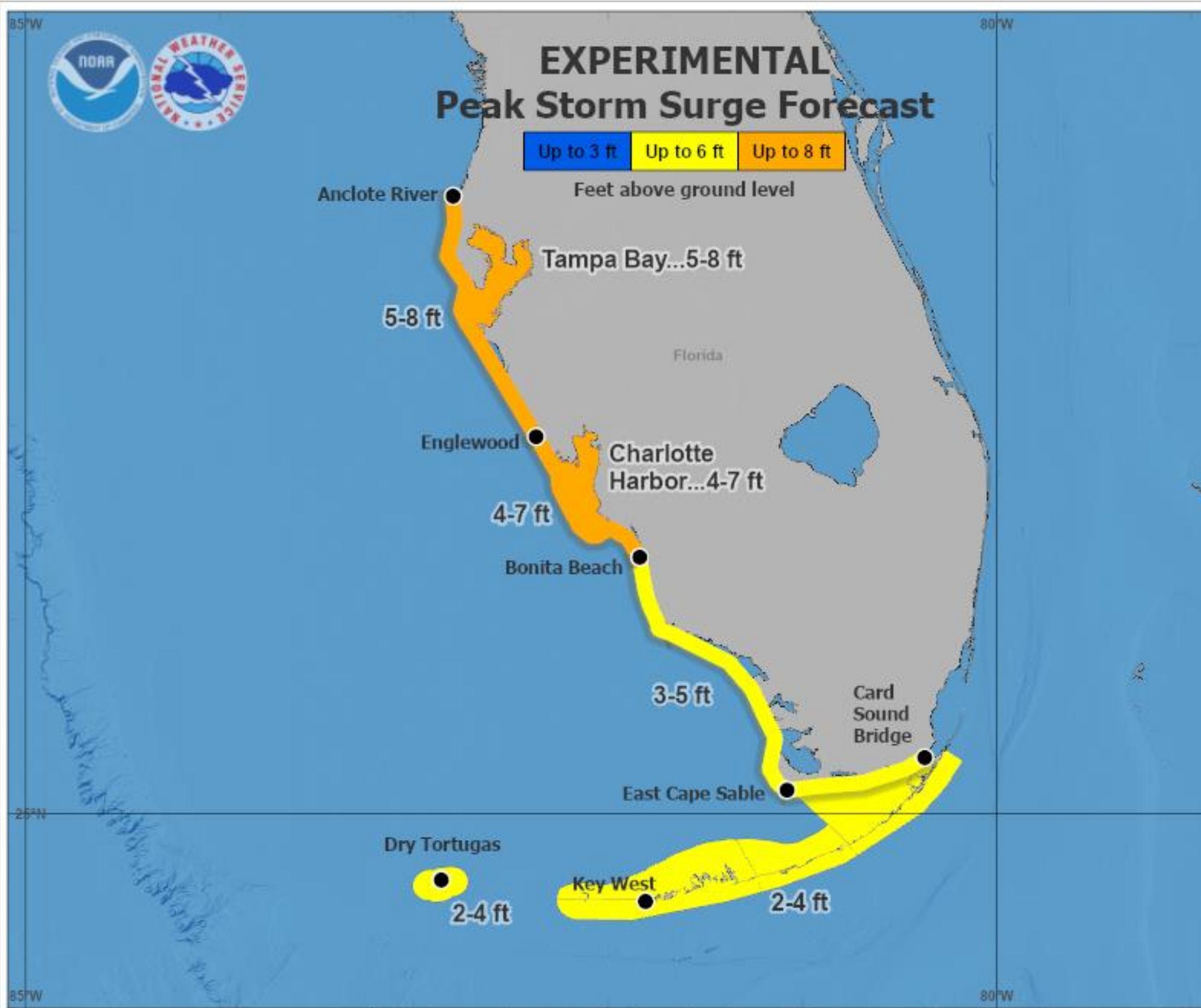
Significant Wave Height (ft)

# Potential Peak Storm Surge / Watches and Warnings



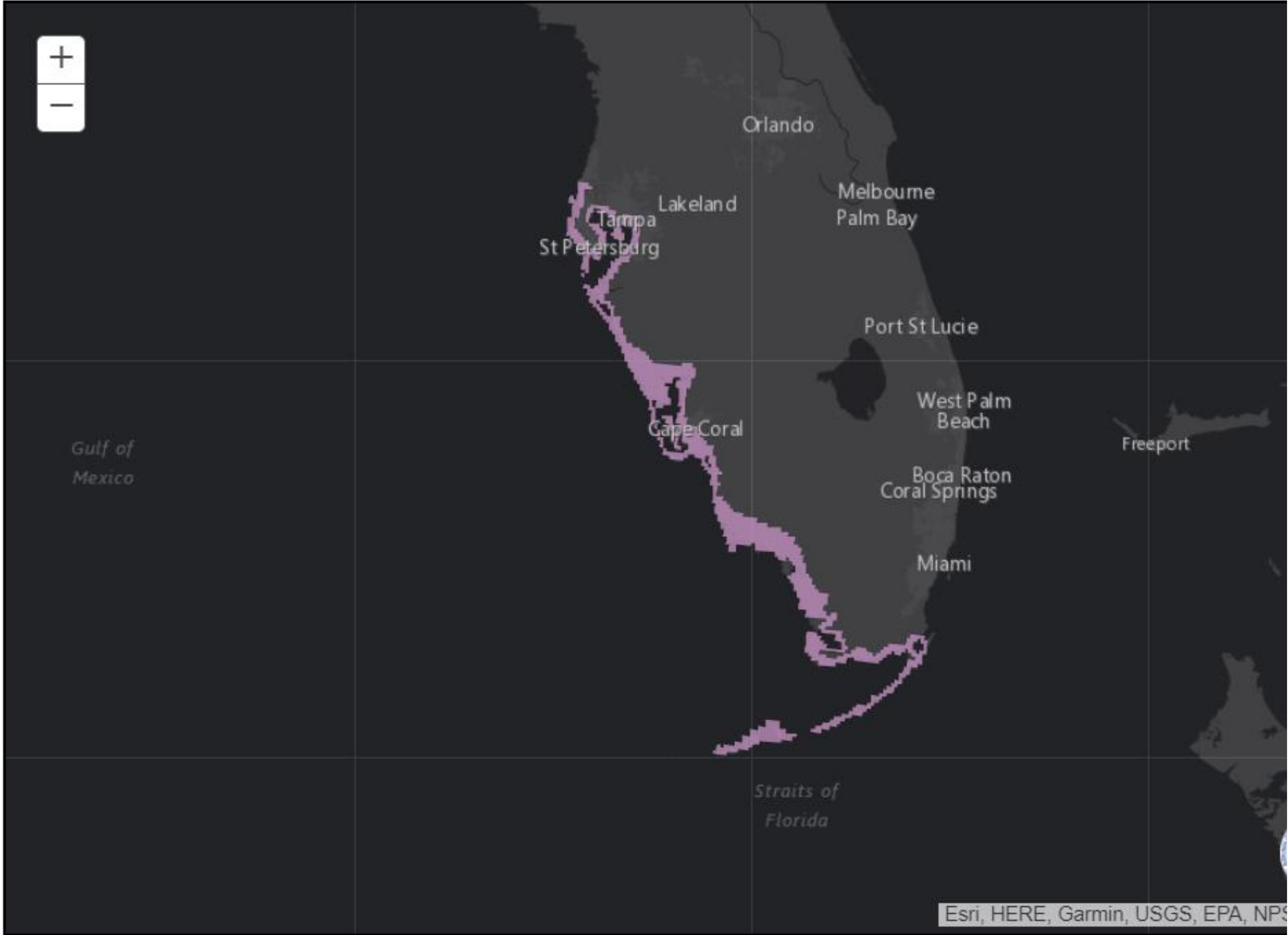
Tropical Analysis and Forecast Branch  
NWS National Hurricane Center

Hurricane Ian



**Hurricane Ian**  
**Monday September 26, 2022**  
**05 AM EDT Advisory 13**  
**NWS National Hurricane Center**

**User Notes:** Water levels along the immediate coast could reach the following heights level within the indicated areas. Elevated water levels will likely be accompanied by large destructive waves. Colors are determined by the highest values in the associated forecast range. Values shown on this graphic are inclusive of tide.



0 30 60mi

Storm Surge Warning  
Storm Surge Watch



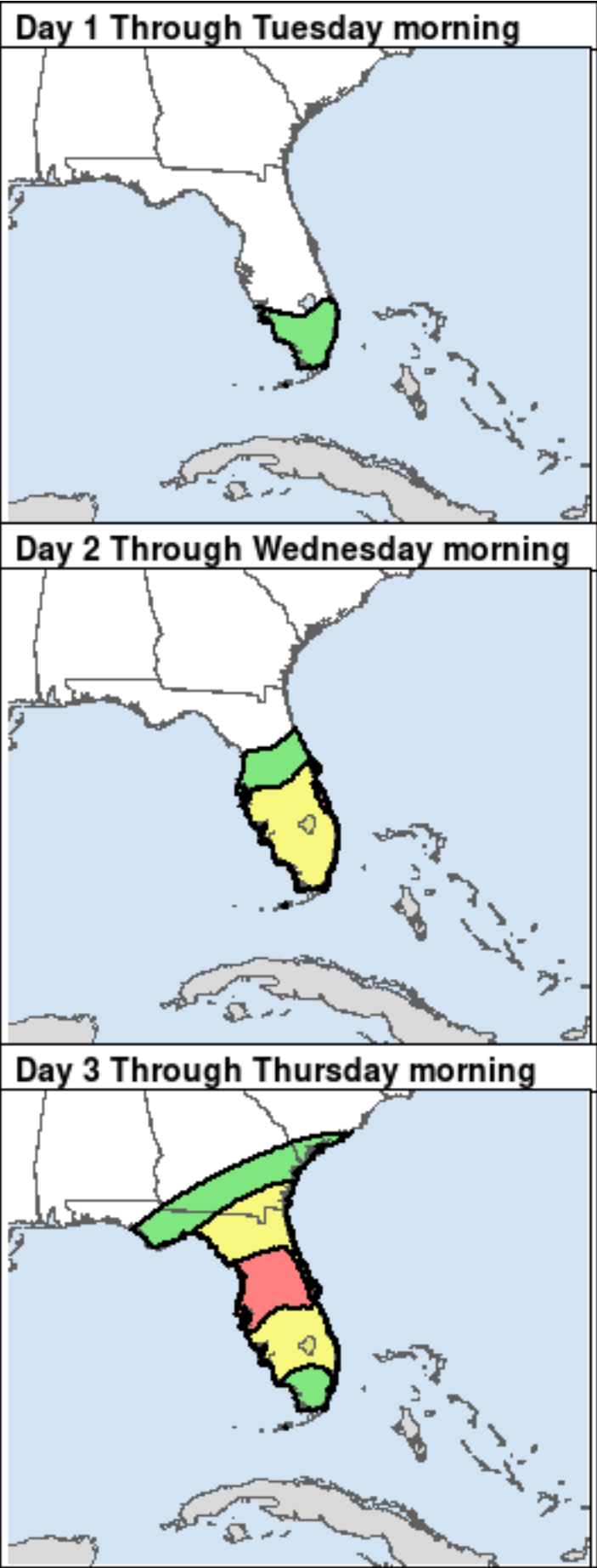
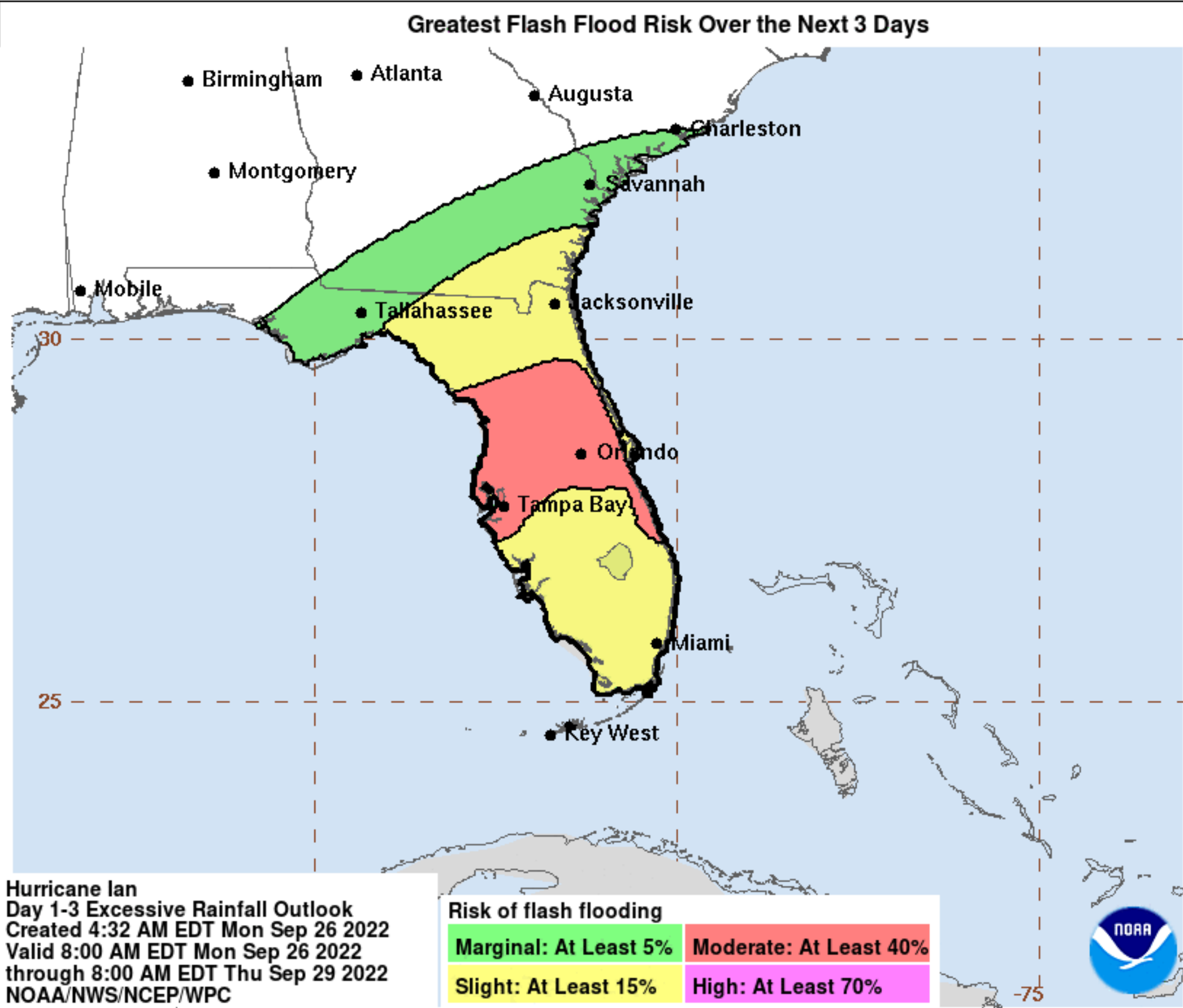
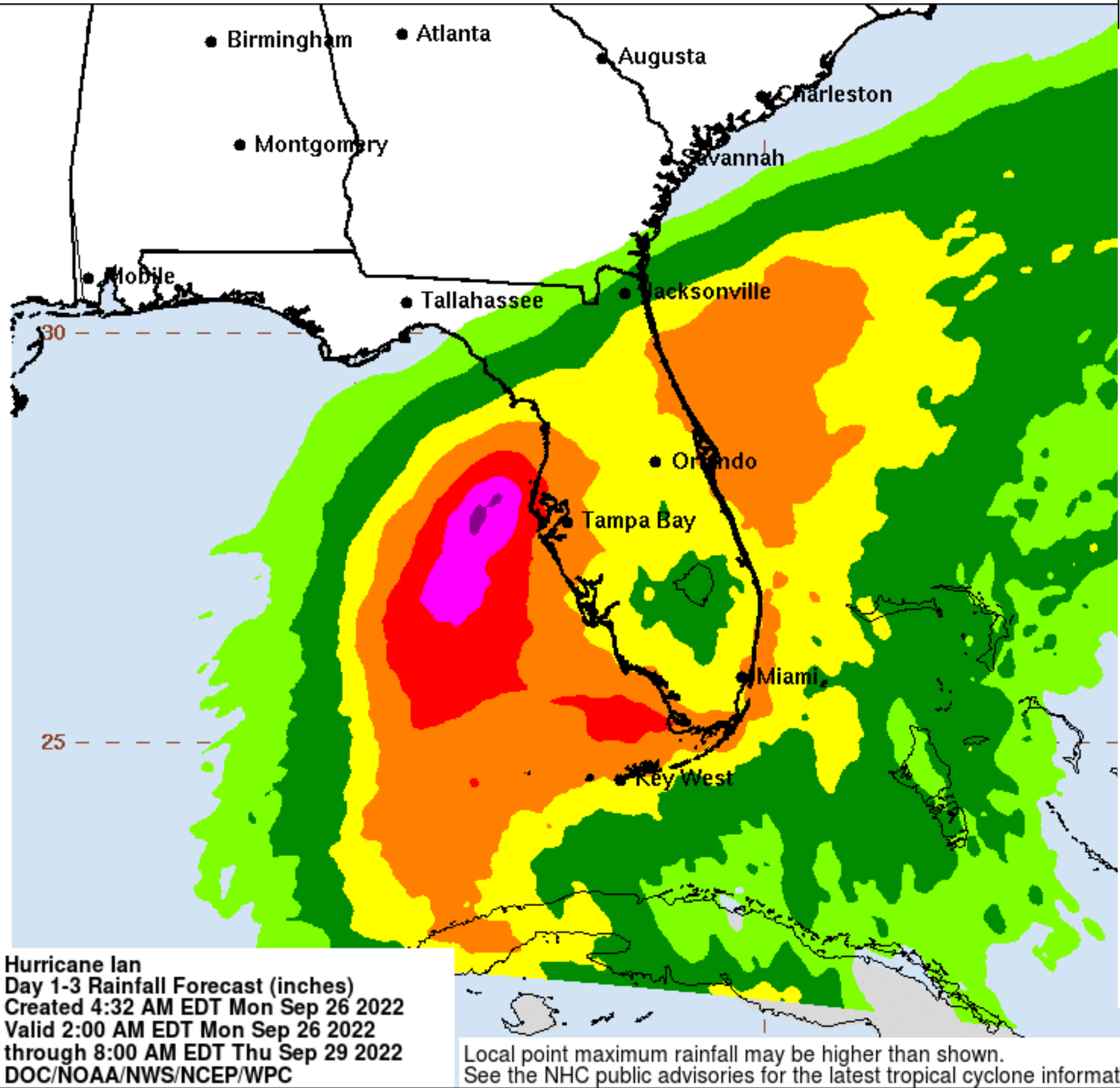
# Expected Storm Total Rainfall and Chance of Rainfall Flooding



Tropical Analysis and Forecast Branch  
NWS National Hurricane Center

Hurricane Ian

Images from NWS Weather Prediction Center



Hurricane Ian  
Day 1-3 Excessive Rainfall Outlook  
Created 4:32 AM EDT Mon Sep 26 2022  
Valid 8:00 AM EDT Mon Sep 26 2022  
through 8:00 AM EDT Thu Sep 29 2022  
NOAA/NWS/NCEP/WPC

Risk of flash flooding  
Marginal: At Least 5%    Moderate: At Least 40%  
Slight: At Least 15%    High: At Least 70%

Local point maximum rainfall may be higher than shown.  
See the NHC public advisories for the latest tropical cyclone information.

Rainfall through Thursday morning

Risk of rainfall exceeding flash flood guidance  
within 25 miles of a point

HIGH: > 50%    SLGT: 10%-20%  
MDT: 20%-50%    MRGL: 5%-10%

Refer to map legend for Valid Time



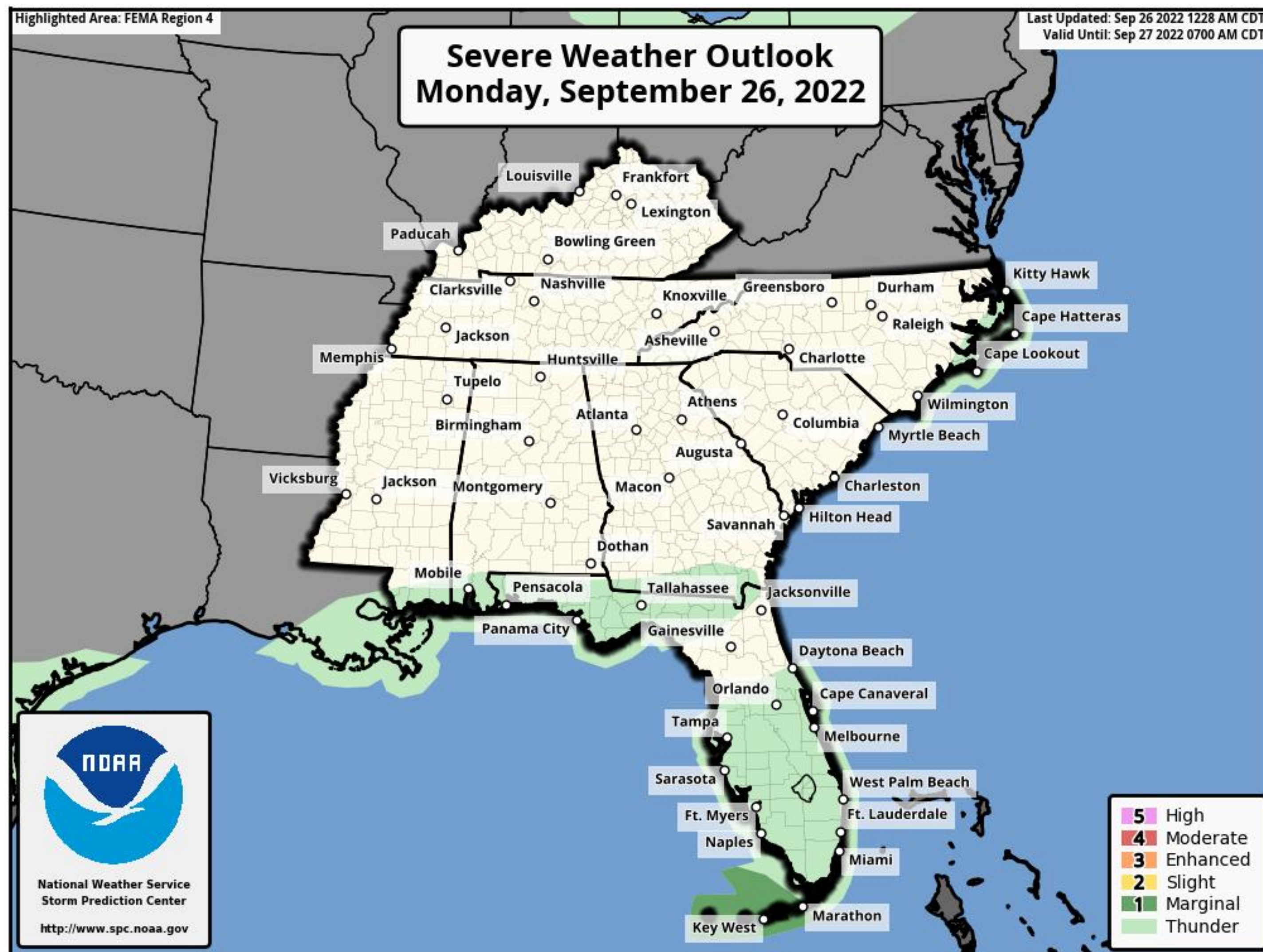
# Tornado Outlook – Day 1

Hurricane Ian

Image from NWS Storm Prediction Center



Tropical Analysis and Forecast Branch  
NWS National Hurricane Center





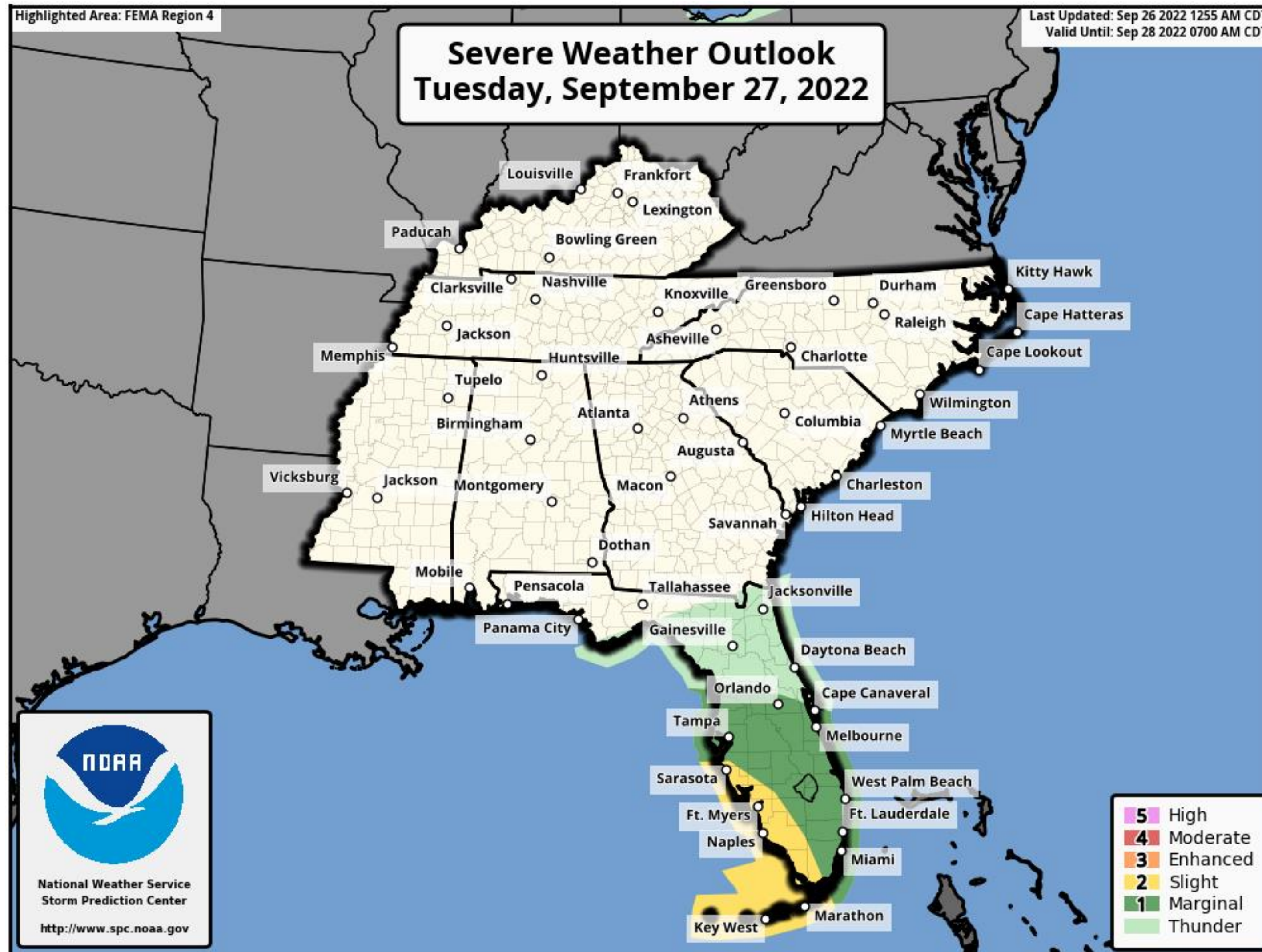
# Tornado Outlook – Day 2

Hurricane Ian

Image from NWS Storm Prediction Center



Tropical Analysis and Forecast Branch  
NWS National Hurricane Center





# Key Messages

## Hurricane Ian



Tropical Analysis and Forecast Branch  
NWS National Hurricane Center



### Key Messages for Hurricane Ian Advisory 13: 5:00 AM EDT Mon Sep 26, 2022

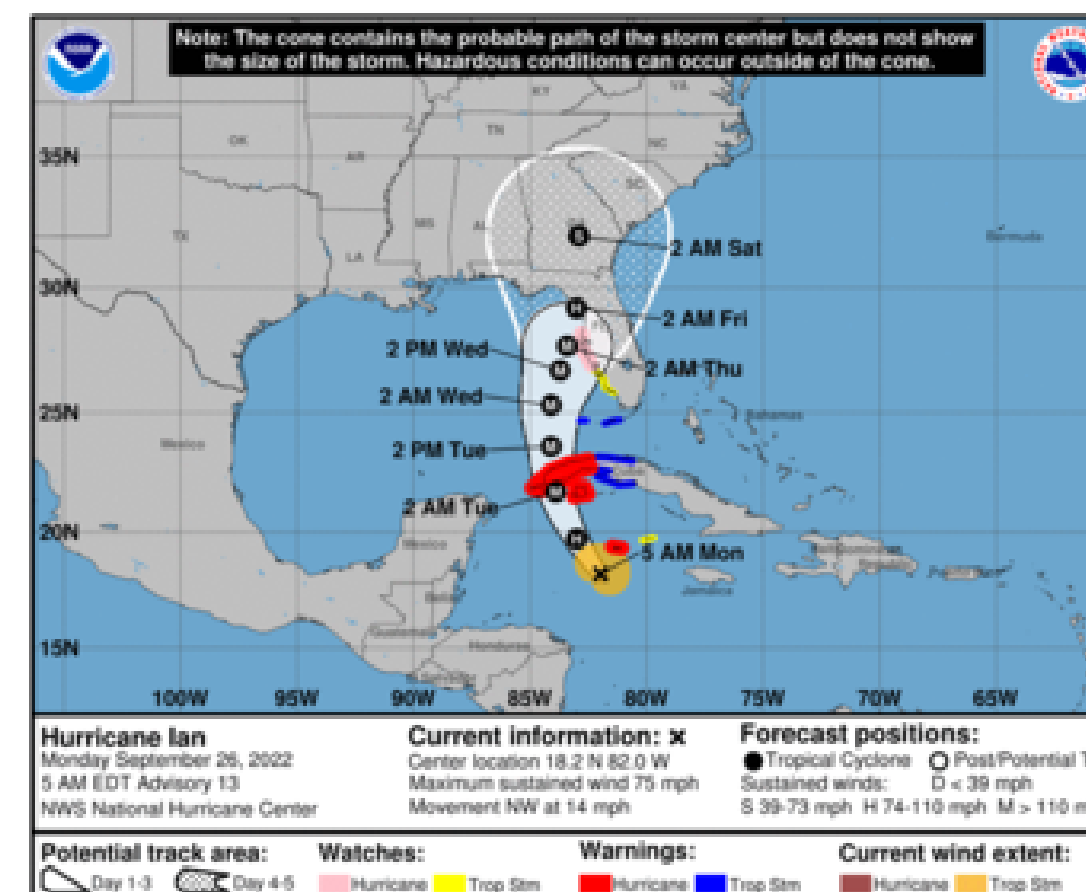


1. Ian is expected to produce heavy rainfall and instances of flash flooding and possible mudslides in areas of higher terrain, particularly over Jamaica and Cuba. Considerable flooding impacts are possible later this week in west central Florida. Additional flash and urban flooding, and flooding on rivers across the Florida Peninsula and parts of the Southeast cannot be ruled out for later this week.

2. Life-threatening storm surge and hurricane-force winds are expected in portions of western Cuba beginning late today, and Ian is forecast to be at major hurricane strength when it is near western Cuba. Efforts to protect life and property should be rushed to completion.

3. Ian is expected to be a major hurricane in the eastern Gulf of Mexico during the middle of this week. Regardless of Ian's exact track and intensity, there is a risk of a life-threatening storm surge, hurricane-force winds, and heavy rainfall along the west coast of Florida and the Florida Panhandle by the middle of this week. Tropical Storm and Hurricane Watches have been issued for a portion of the west coast of Florida and additional watches may be required later today.

For more information go to [hurricanes.gov](https://hurricanes.gov)



### IMPACTS FOR D7/D8 (through next 5 days)

Winds – High to Extreme

Storm Surge – High to Extreme

Rainfall/Flash Flooding – High

Tornadoes – Low to Medium

Waves - Extreme

### Marine Key Messages:

- Peak seas are currently near 20 ft in the NW Caribbean
- Once Ian emerges off the Cuba coast, seas are expected to build to over 30 ft in the eastern Gulf Tue night and Wed





# HURRICANE IAN BRIEFING

You can contact the Tropical Analysis and Forecast Branch at  
305-229-4424

*The Next Briefing Will Be:  
Tuesday 9:00 AM EDT*

*You can always find get the latest graphics and information for this storm at [www.hurricanes.gov](http://www.hurricanes.gov)*



NHC\_TAFB

[www.nhc.noaa.gov](http://www.nhc.noaa.gov)