

IMPACTS FOR **D7** (through next 5 days)

Winds – **Low**

Storm Surge – **Low**

Rainfall/Flash Flooding – **Moderate**

Tornadoes – **None**

Waves – **Moderate**

BRIEFING

8:15 AM EDT

Friday, July 2, 2021

Prepared by:

Amanda Reinhart

*Tropical Analysis and Forecast Branch
NWS National Hurricane Center*



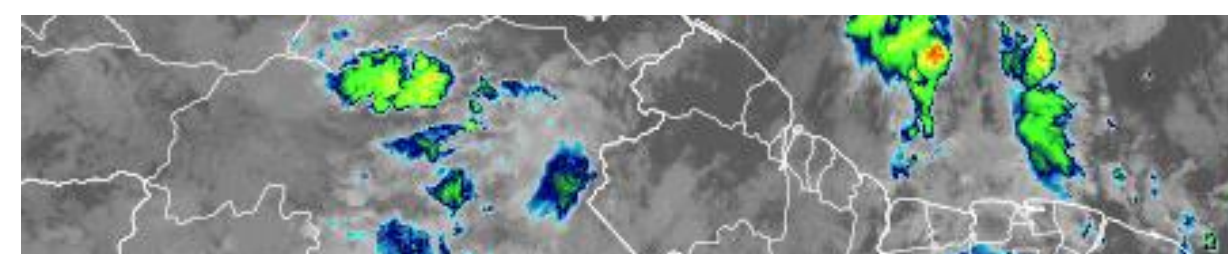
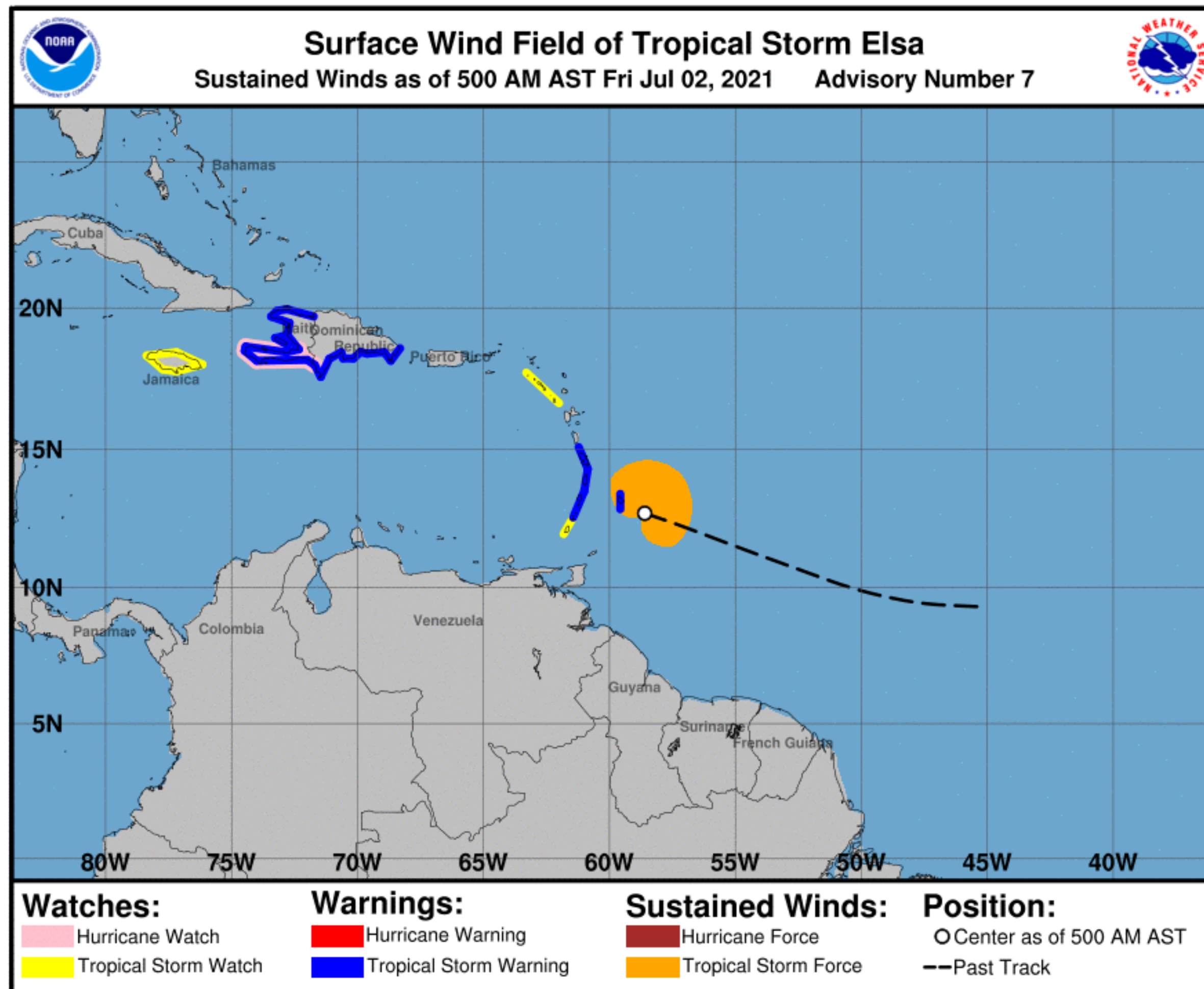
NHC_TAFB

www.nhc.noaa.gov

Situation Overview



Tropical Analysis and Forecast Branch
NWS National Hurricane Center



...ELSA HAS BECOME A HURRICANE...

SUMMARY OF 500 AM EDT INFORMATION

LOCATION...12.7N 58.6W
ABOUT 60 NM ESE OF BARBADOS
ABOUT 155 NM ESE OF ST. VINCENT
MAXIMUM SUSTAINED WINDS...50 KT
PRESENT MOVEMENT...WNW 25 KT

SIZE

64 KT....TBD

50 KT..... 40NE 0SE 0SW 0NW.

34 KT..... 120NE 100SE 0SW 110NW.

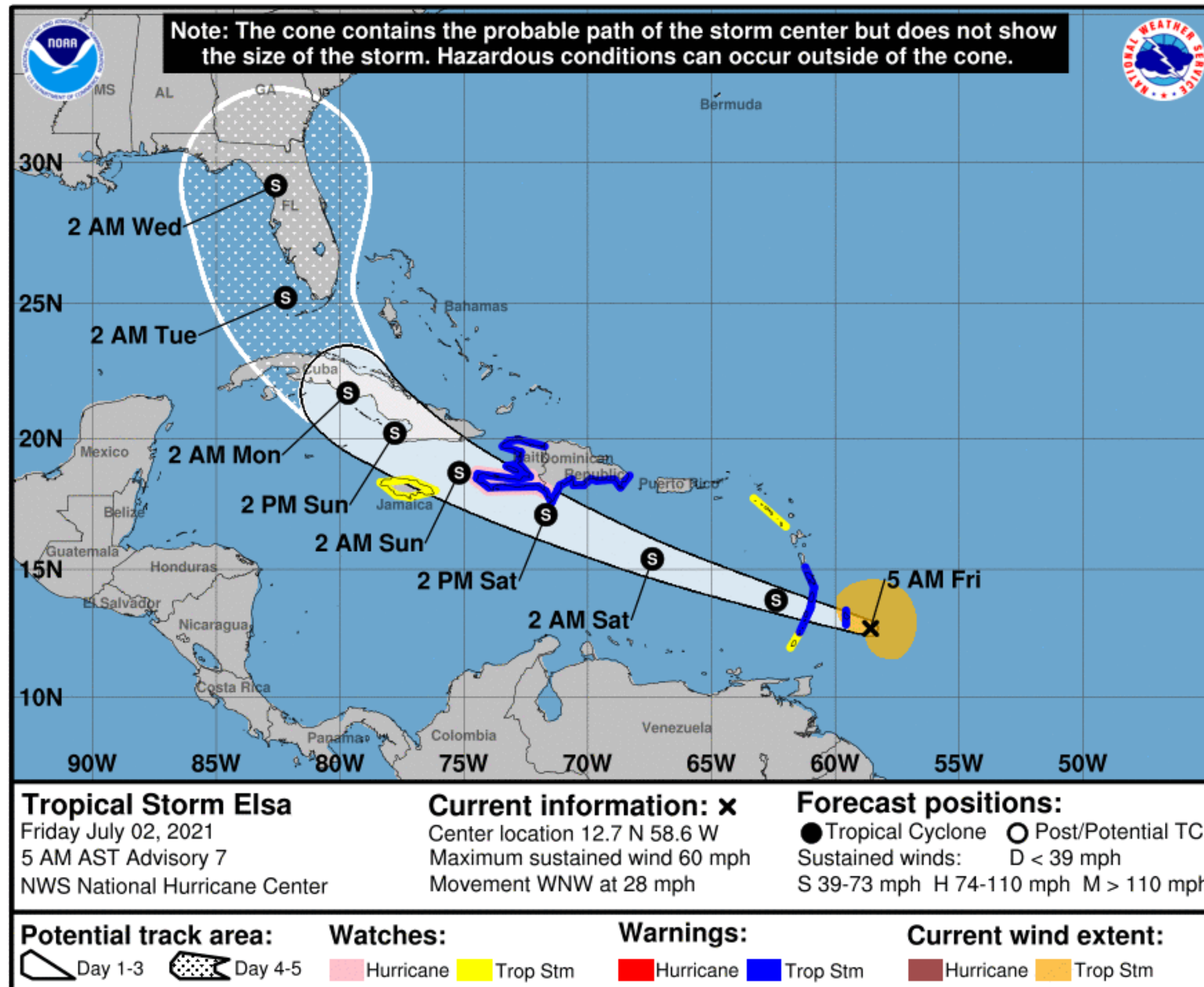
12 FT SEAS..210NE 75SE 0SW 75NW.

PEAK SEAS 20 FT

Forecast Information



Tropical Analysis and Forecast Branch
NWS National Hurricane Center



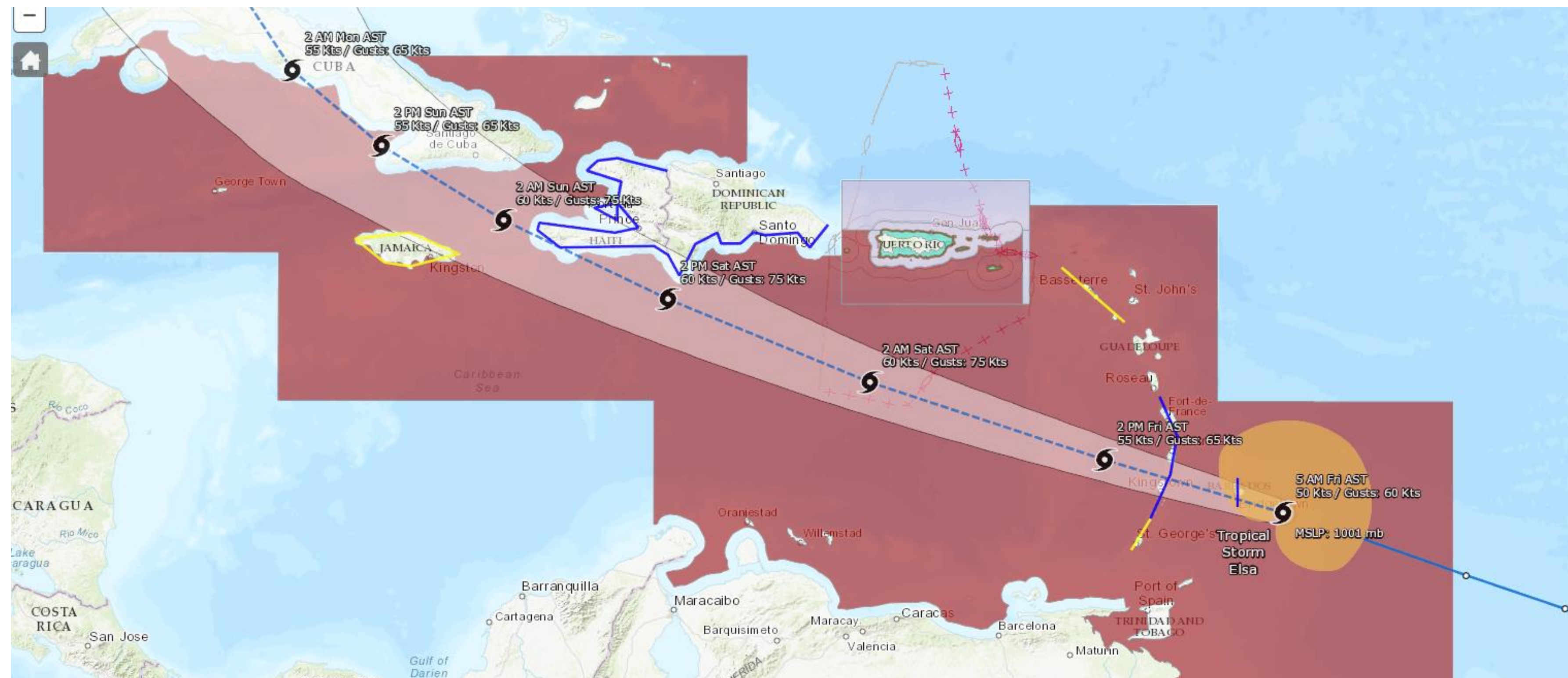
NOTE: Do not focus on the exact track. Impacts can occur well outside the area enclosed by the cone.

- Elsa will continue to move **WNW** over the next few days while slightly slowing down in the **Caribbean**
- System expected to intensify some
- **Uncertainty in track and intensity continues to be very large beyond Day 2**
- Current center forecast positions through the next 5 days (if applicable) illustrated by dots
- White swath of potential track is average track error added to each side of the forecast track through day 3
- Hatched swath of potential track is average track error added to each side of the forecast track days 4-5

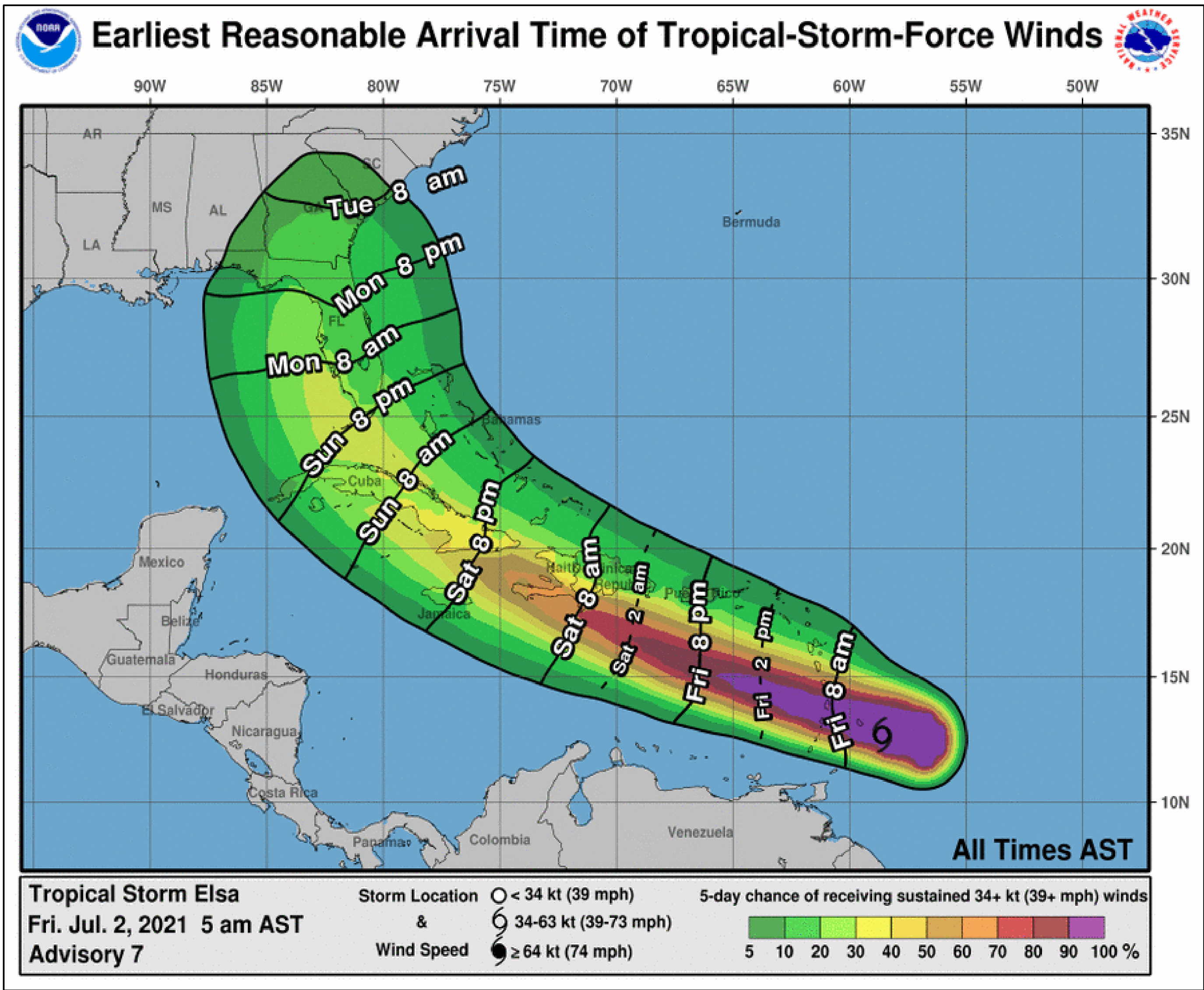
Hazards Map



Tropical Analysis and Forecast Branch
NWS National Hurricane Center



<https://nowcoast.noaa.gov/>

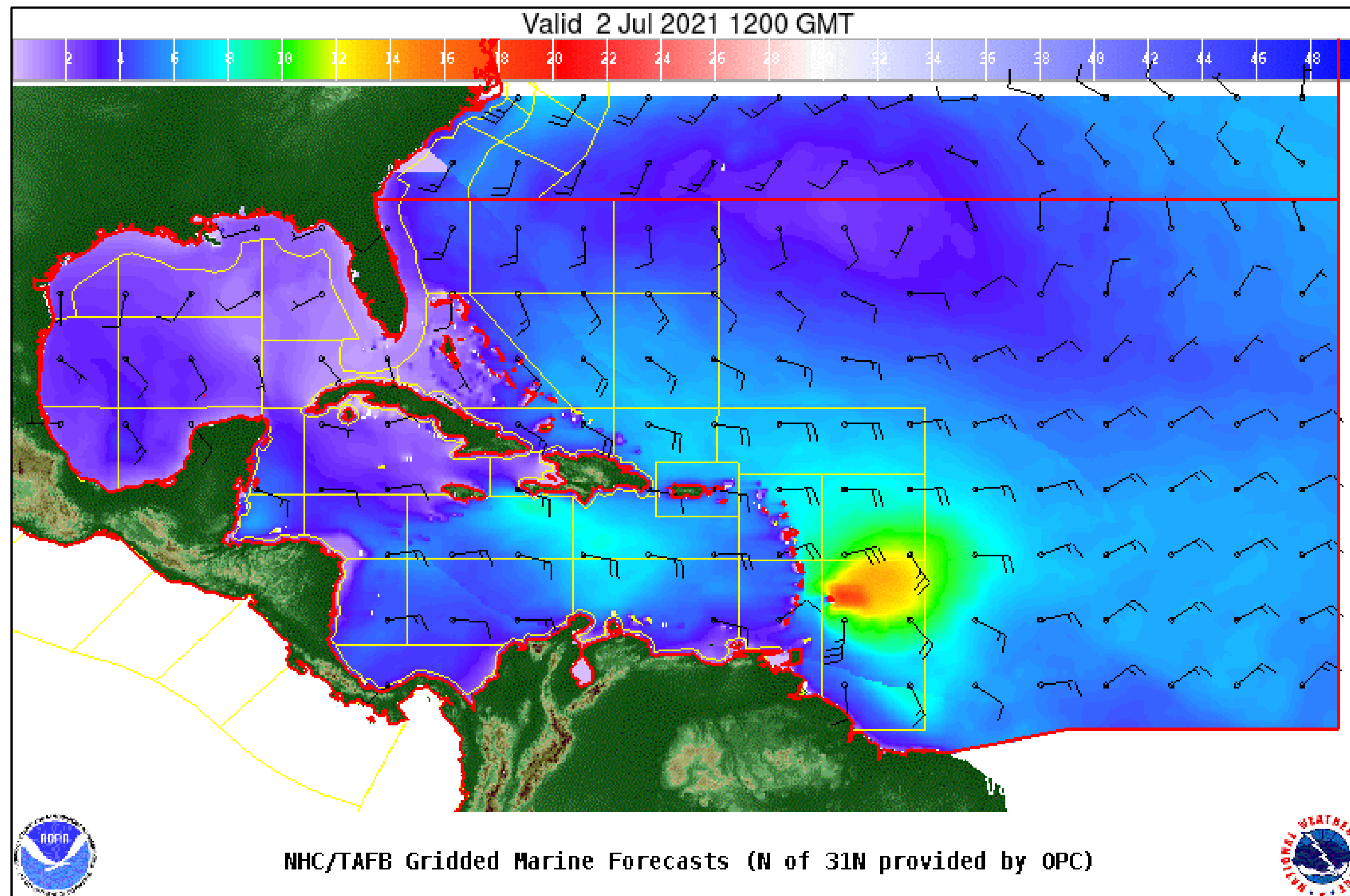


- AGUADILLA PR 15%
- VIEQUES PR 15%
- SAINT THOMAS 10%
- SAINT CROIX 15%
- JACKSONVILLE 15%
- DAYTONA BEACH 15%
- COCOA BEACH FL 20%
- PATRICK AFB 20%
- W PALM BEACH 20%
- FT LAUDERDALE 20%
- MIAMI FL 20%
- HOMESTEAD ARB 20%
- KEY WEST FL 35%
- NAPLES FL 30%
- VENICE FL 30%
- TAMPA FL 25%
- CEDAR KEY FL 25%
- TALLAHASSEE FL 34 15%
- APALACHICOLA 15%
- PANAMA CITY FL 10%
- The earliest reasonable time of arrival of Tropical Storm Force Winds (34kt to 63 kt) for this cyclone based off the current track and wind radii.
- Clear or dark green are the lowest chances of 0-30%.
- Yellow to orange is 31-70%
- Red through purple are the highest probabilities of 71%-100%
- See the color bar below the image for more details.

Wind And Waves



Tropical Analysis and Forecast Branch
NWS National Hurricane Center



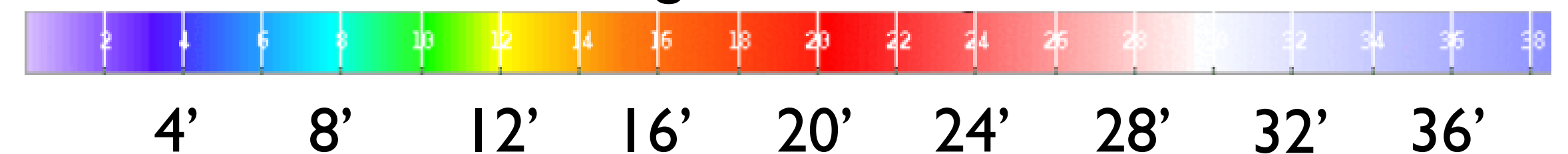
Current Conditions

8am EDT, Friday, July 2

Peak Winds: 65 kt

Peak Seas: 20 ft

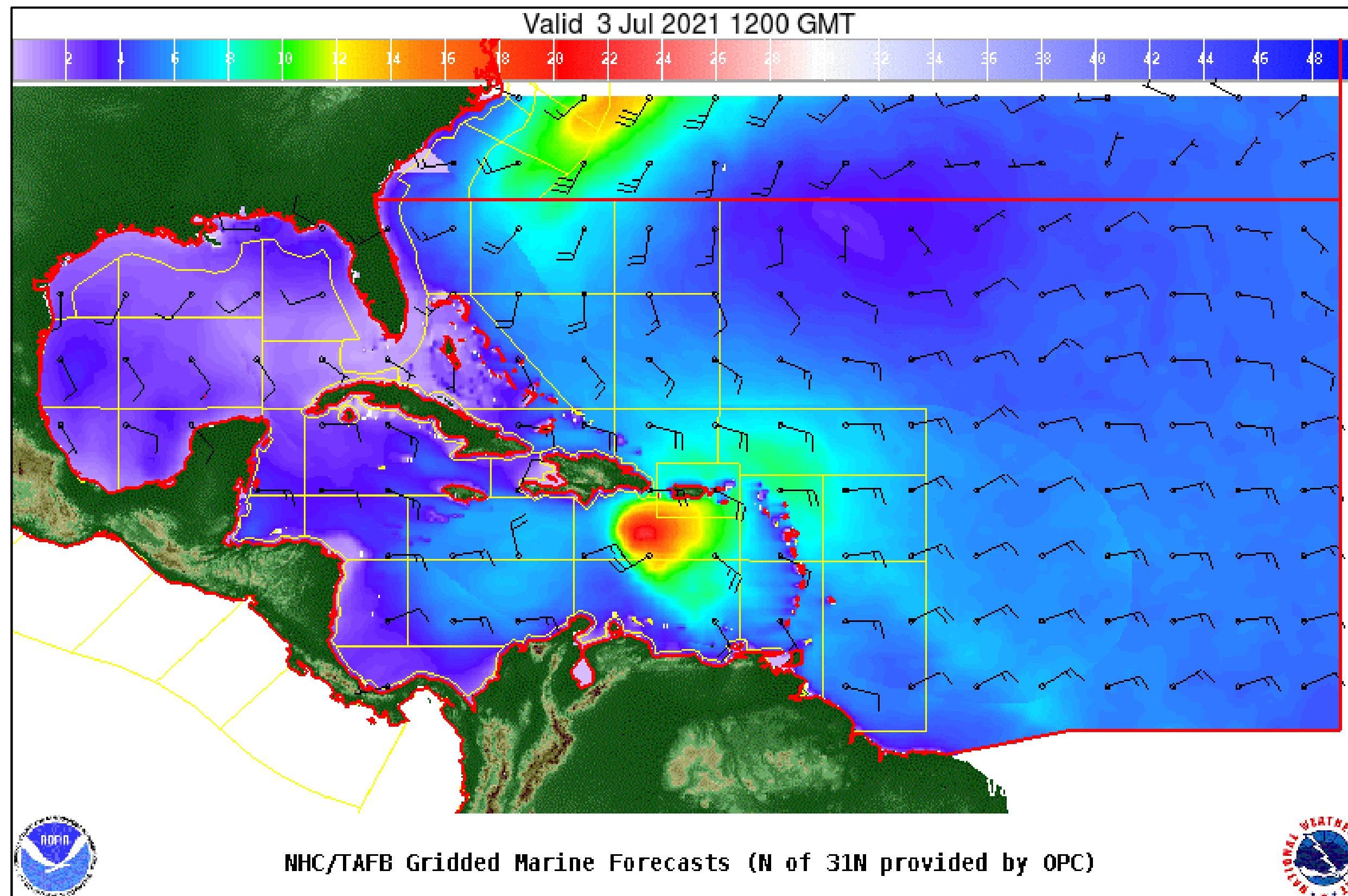
■ Wave heights are in feet



Wind And Waves



Tropical Analysis and Forecast Branch
NWS National Hurricane Center



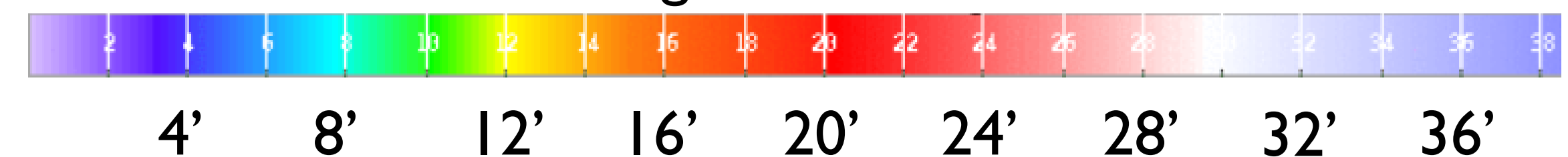
24 Hour Forecast

8 am EDT, Saturday, July 3

Peak Winds: 65 kt

Peak Seas: 23 ft

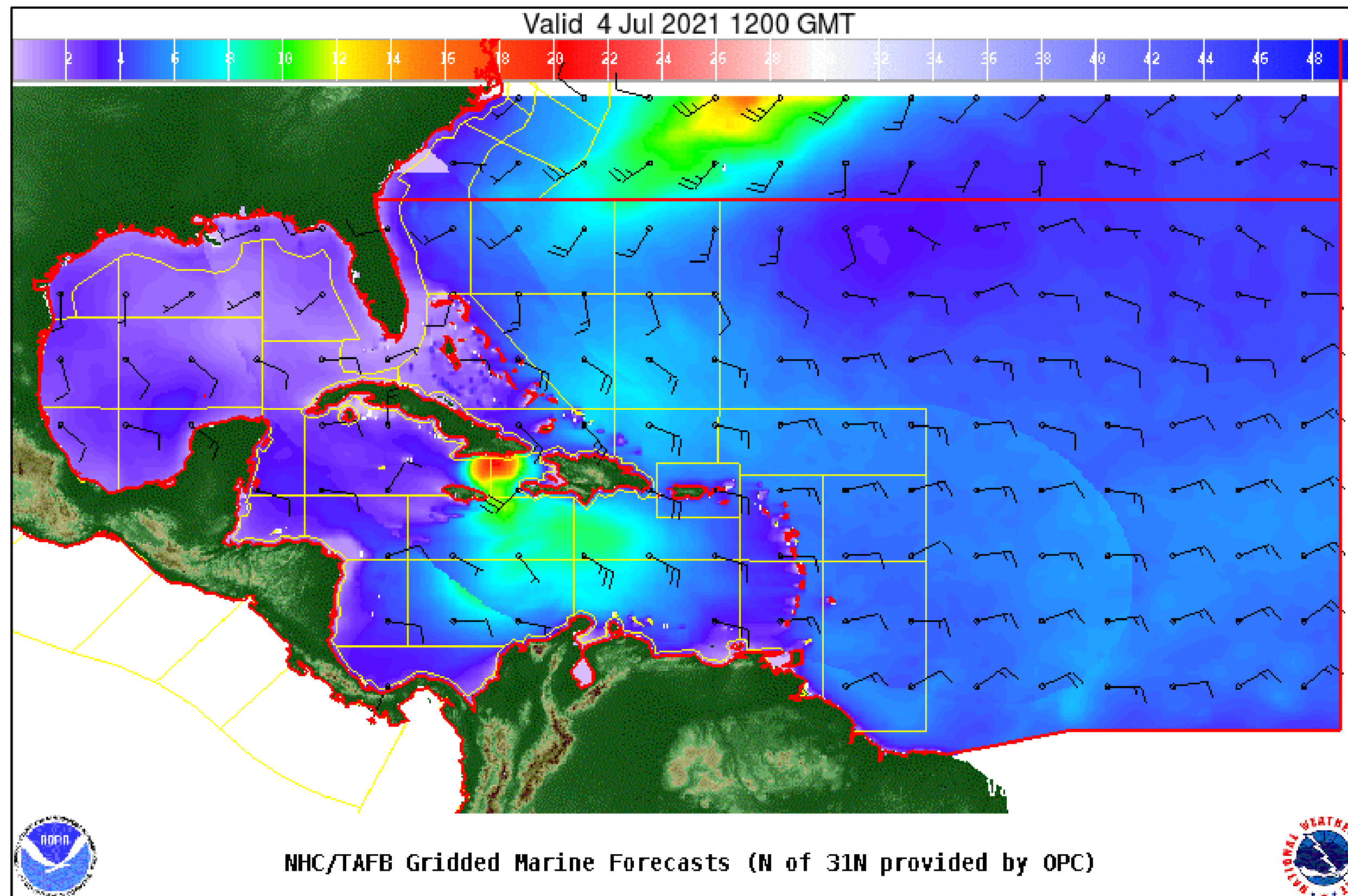
■ Wave heights are in feet



Wind And Waves



Tropical Analysis and Forecast Branch
NWS National Hurricane Center



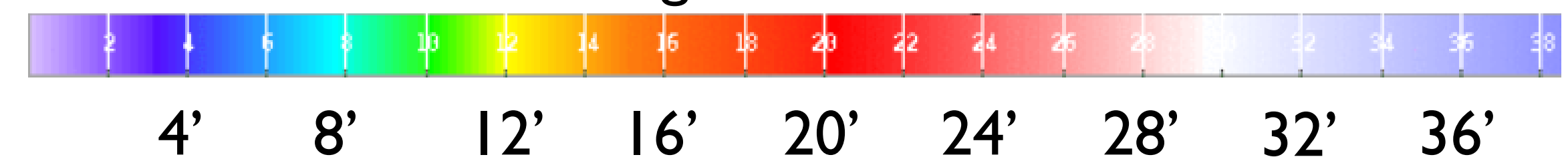
48 Hour Forecast

8 am EDT, Sunday, July 4

Peak Winds: 60 kt

Peak Seas: 18 ft

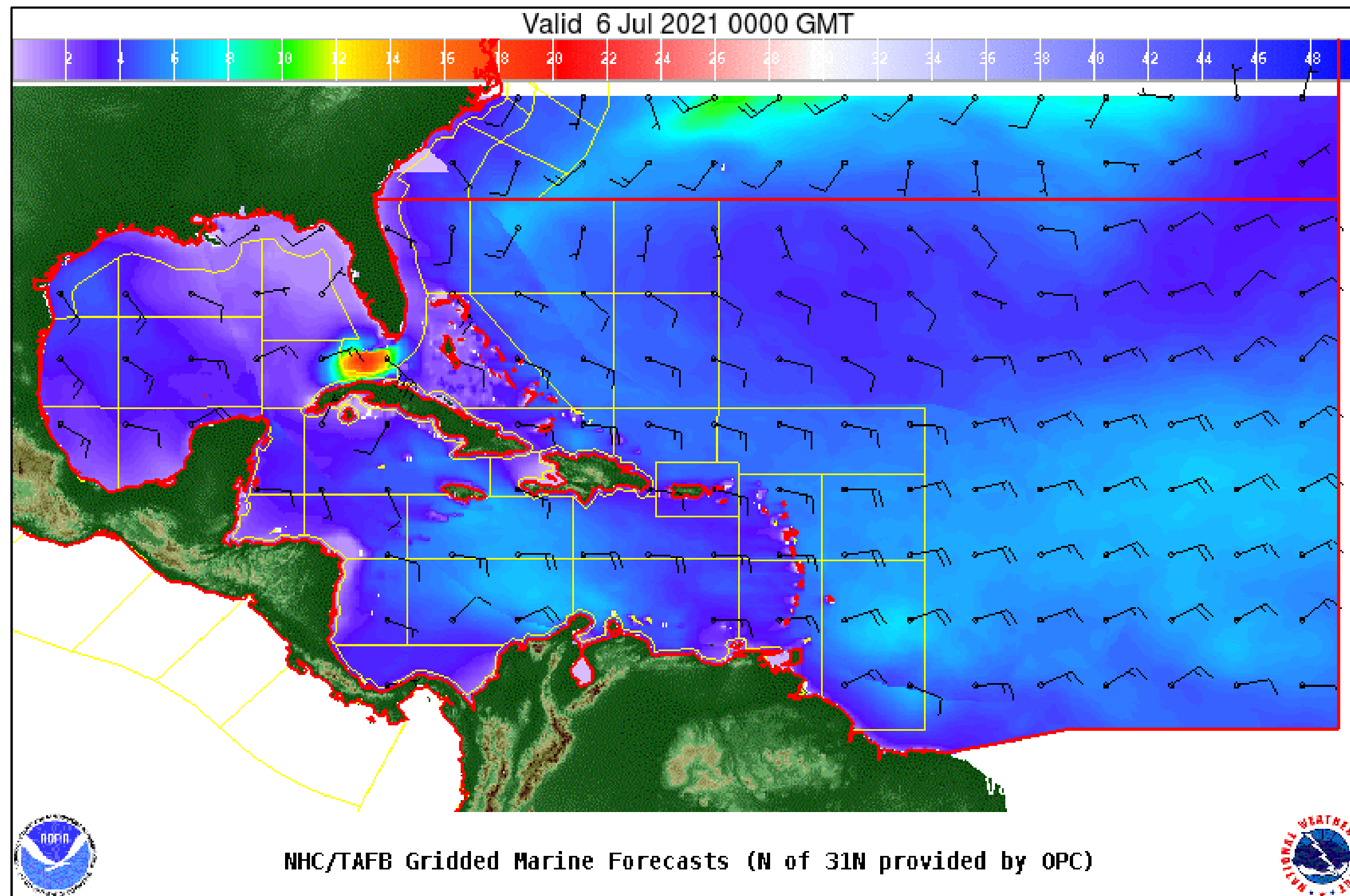
■ Wave heights are in feet



Wind And Waves



Tropical Analysis and Forecast Branch
NWS National Hurricane Center



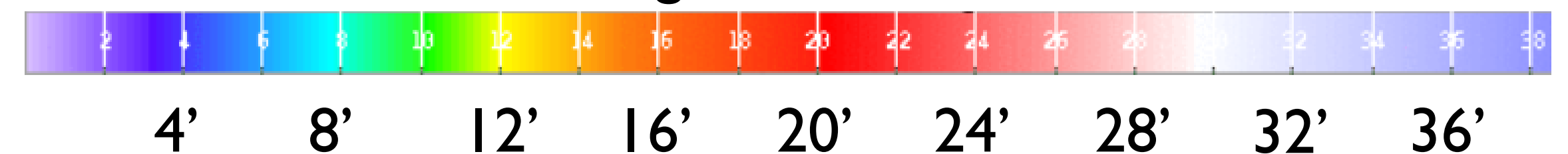
72 Hour Forecast

8 am EDT, Monday, July 5

Peak Winds: 55 kt

Peak Seas: 15 kt

■ Wave heights are in feet

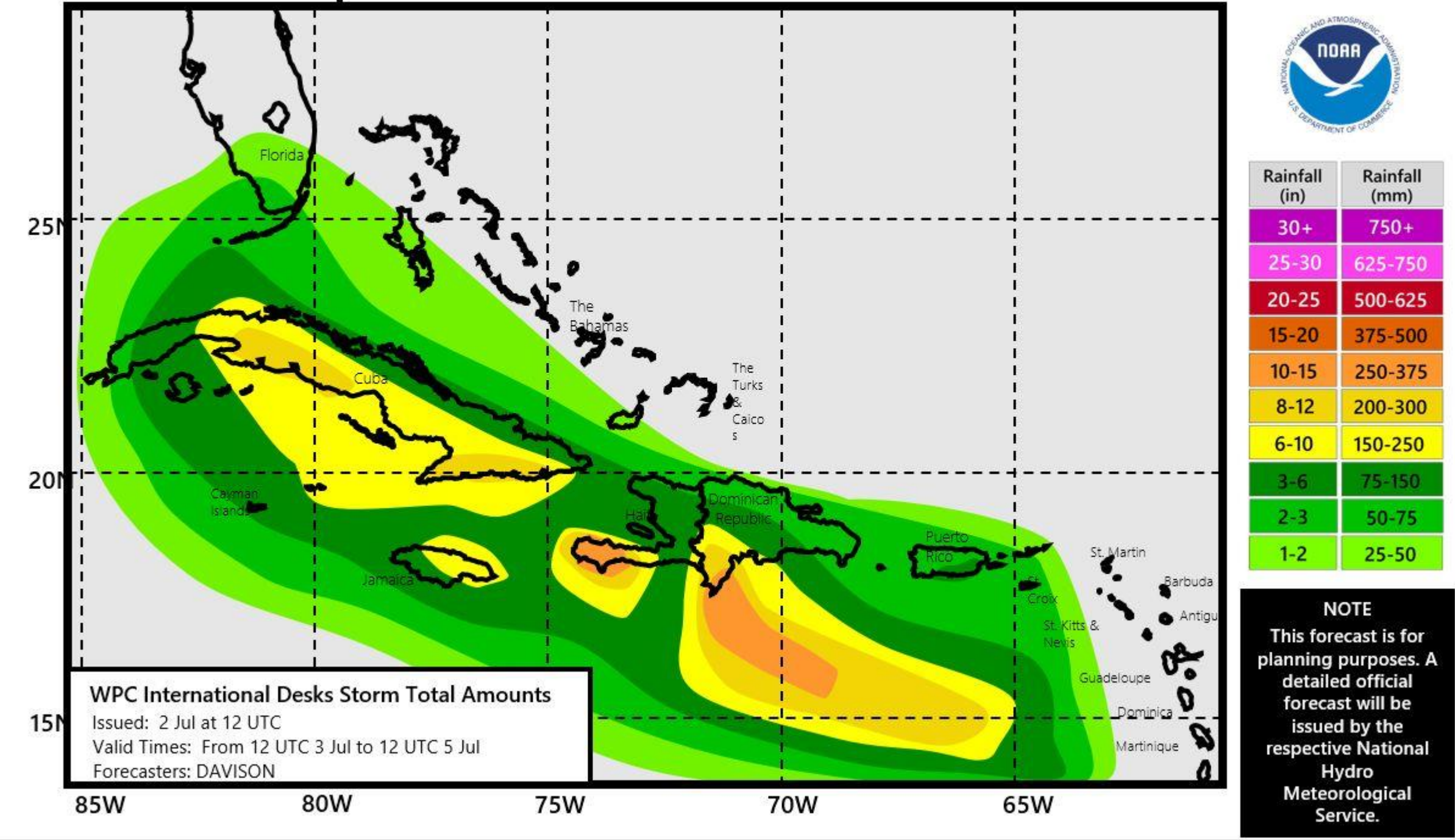


Expected Storm Total Rainfall and Chance of Rainfall Flooding

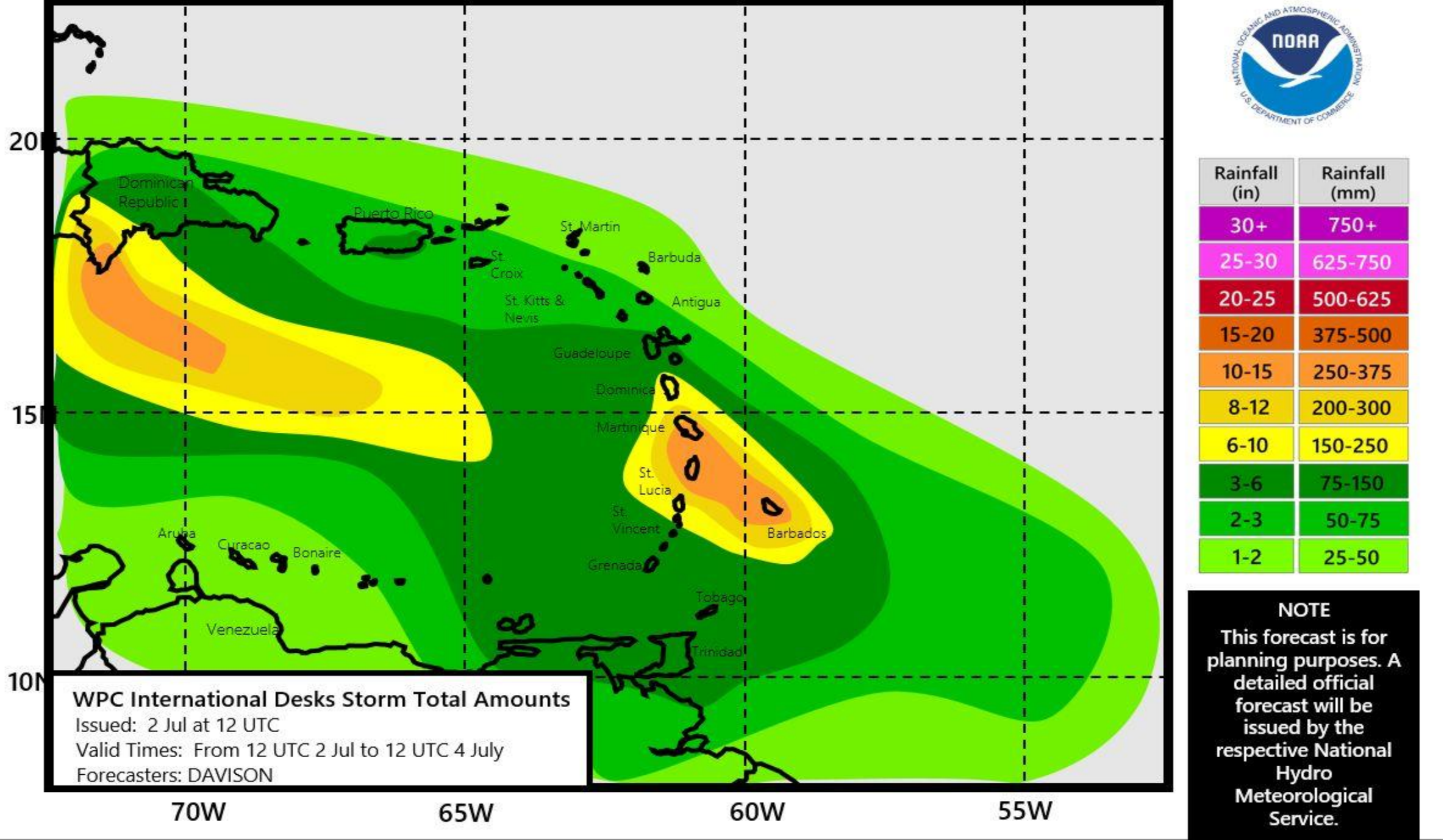


Tropical Analysis and Forecast Branch
NWS National Hurricane Center

Tropical Storm ELSA Rainfall



Tropical Storm ELSA Rainfall



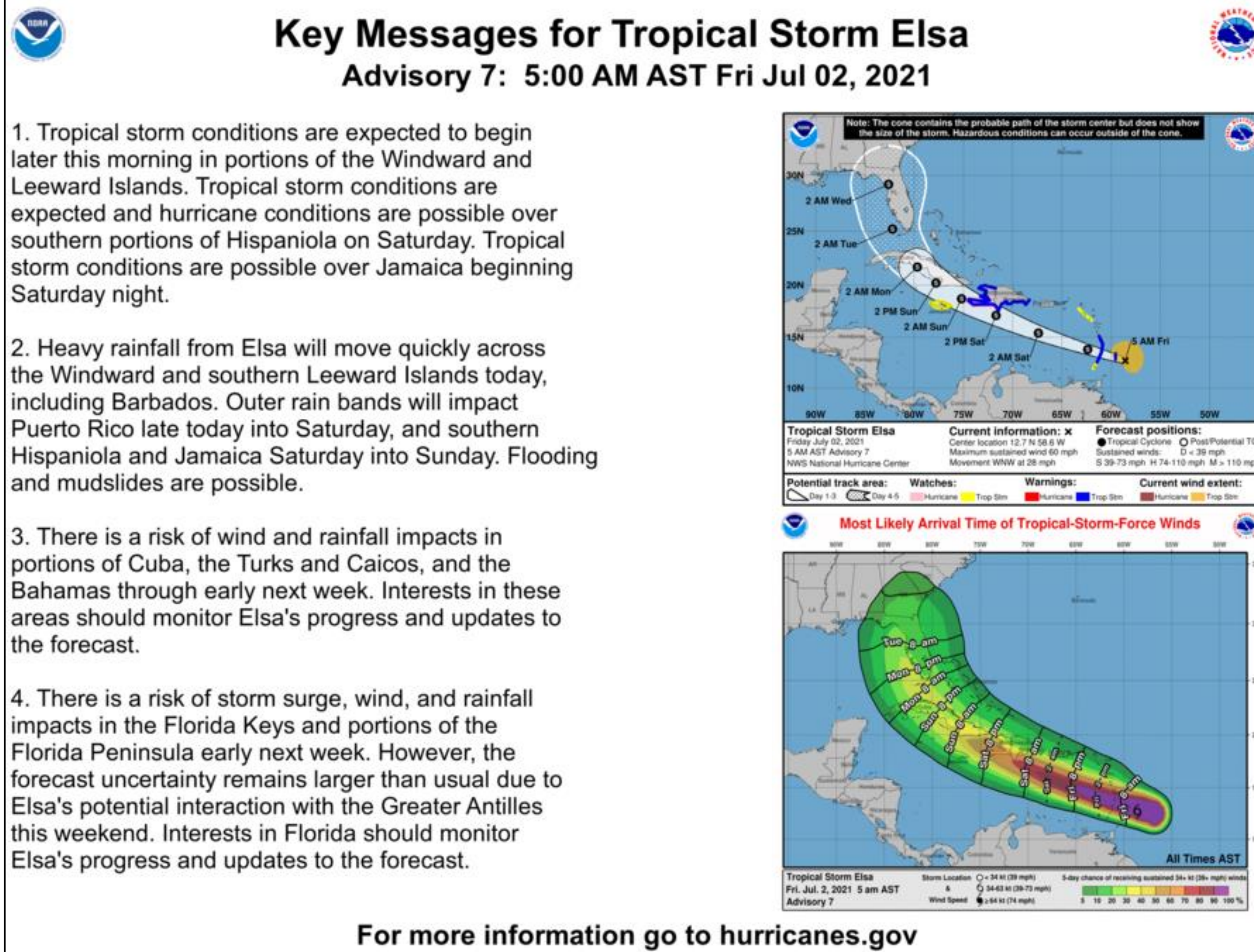
Heavy rainfall from Elsa will move quickly across the Windward and southern Leeward Islands today, including Barbados.

Outer rain bands will impact Puerto Rico late today into Saturday, and southern Hispaniola and Jamaica Saturday into Sunday. Flooding and mudslides are possible.

Key Messages



Tropical Analysis and Forecast Branch
NWS National Hurricane Center



- **Marine Key Messages:**
- Seas will build to 23 ft in the Caribbean south of the Mona Passage
- If Elsa makes it to the Gulf of Mexico, seas could build to 15 ft off the SW Florida coast

IMPACTS FOR D7 (through next 5 days)

Winds – Low

Storm Surge – Low

Rainfall/Flash Flooding – Moderate

Tornadoes – None

Waves – Moderate



BRIEFING

You can contact the Tropical Analysis and Forecast Branch at
305-229-4424

You can always find get the latest graphics and information for this storm at www.hurricanes.gov



NHC_TAFB

www.nhc.noaa.gov