

**IMPACTS FOR D7 (through next 3 days)**

**Winds – Low**

**Storm Surge – Low**

**Rainfall/Flash Flooding – Moderate**

**Tornadoes – Low**

**Waves - Low**

# TROPICAL STORM ELSA BRIEFING



4:00 PM EDT  
Wednesday July 7, 2021

Prepared by:  
**Scott Stripling**

*Tropical Analysis and Forecast Branch  
NWS National Hurricane Center*



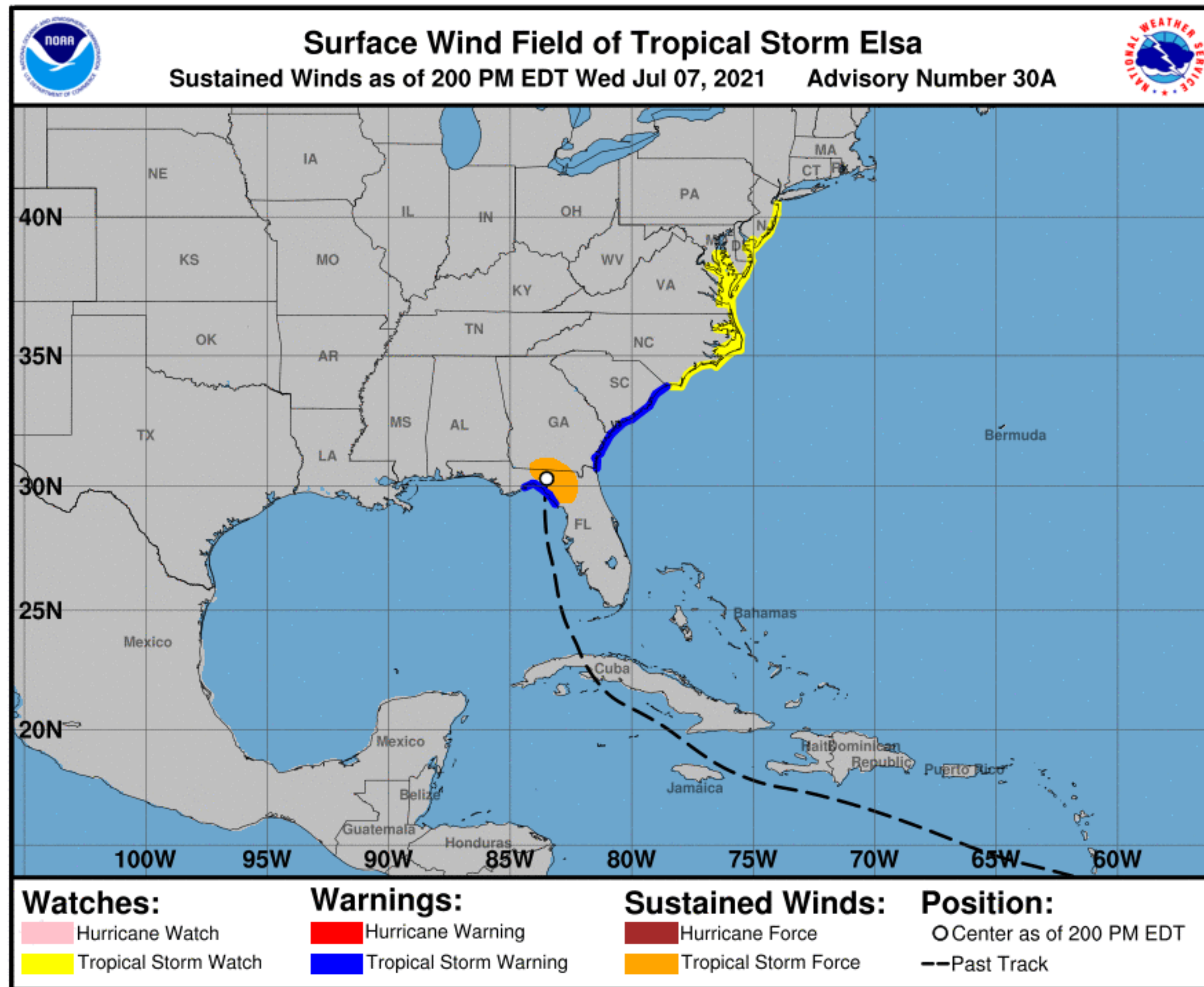


# Situation Overview

## Tropical Storm Elsa



Tropical Analysis and Forecast Branch  
NWS National Hurricane Center



...Elsa is inland and weakening over northern Florida...

Summary of 200 PM EDT...1800 UTC...  
Information

Location... 30.3N 83.5W

About 90 nm...W of Jacksonville FL

Maximum Sustained Winds...45 kt or 50 mph

Present Movement...360 degrees at 12 kt

Minimum Central Pressure...1002 mb

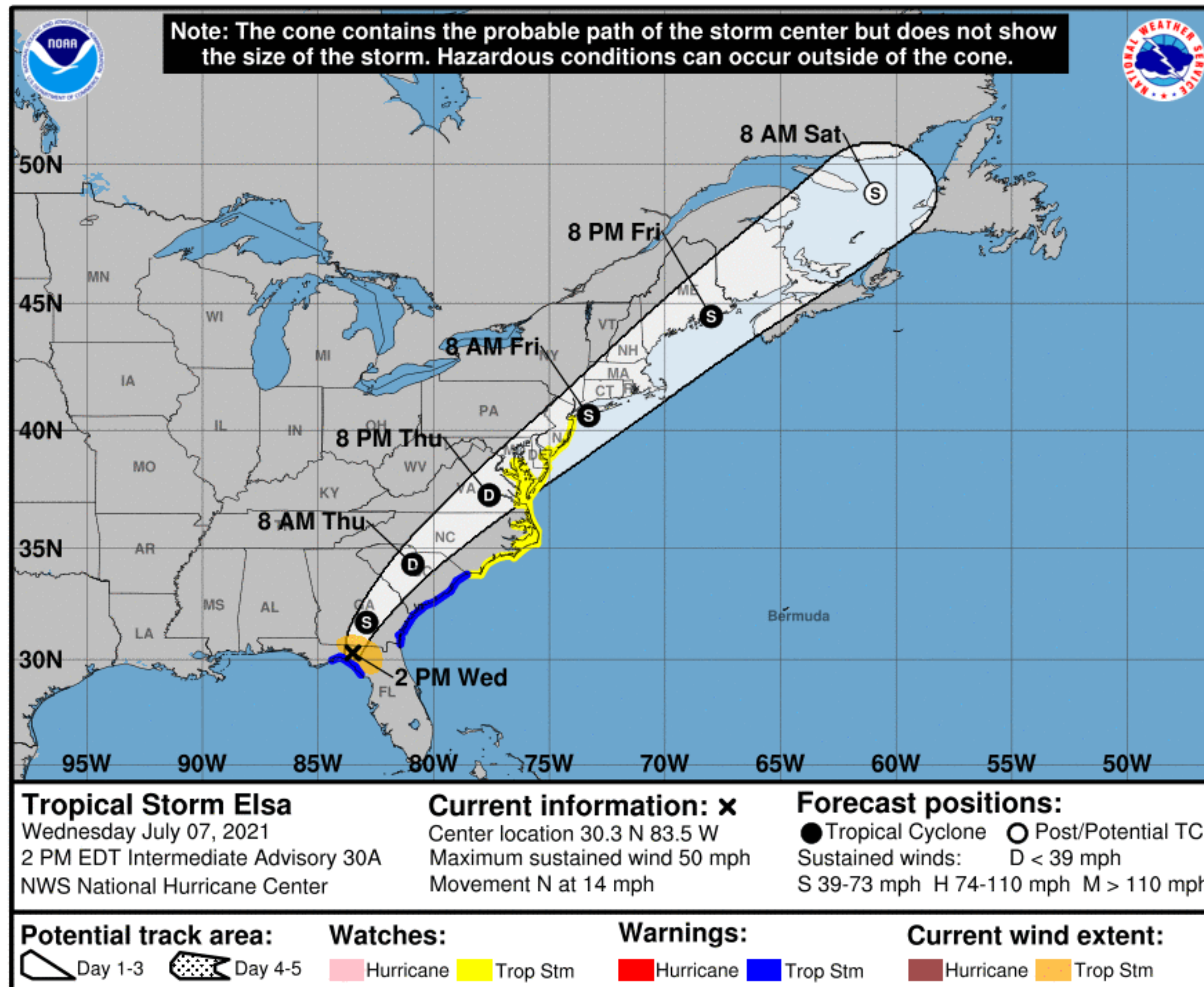


# Forecast Information

## Tropical Storm Elsa



Tropical Analysis and Forecast Branch  
NWS National Hurricane Center



**NOTE:** Do not focus on the exact track. Impacts can occur well outside the area enclosed by the cone.

- Elsa is inland and has weakened, and is maintaining a northward motion across N Florida. Winds along the coast there have just begun to diminish below Tropical Storm strength. Recent altimeter data showed seas to at least 9 ft.
- Elsa is expected to begin moving NE and gradually accelerate tonight through Thursday and pass near the coastal zones of Georgia and South Carolina. Trailing bands of Tstorms also likely to linger across portions N Florida through tonight.
- White swath of potential track is the probable track error added to each side of the forecast track through day 3
- Hatched swath of potential track is 67<sup>th</sup> percentile error added to each side of the forecast track days 4-5

\*\* Swaths are calculated using 67<sup>th</sup> percentile errors and actual track may be well inside, or possibly outside the potential track areas indicated.

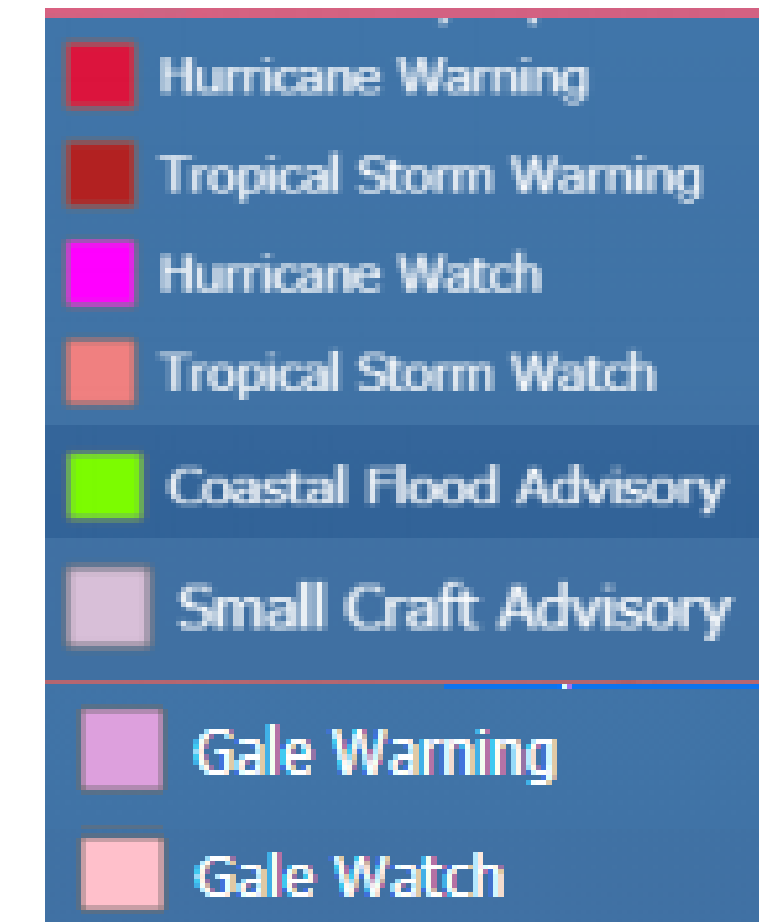
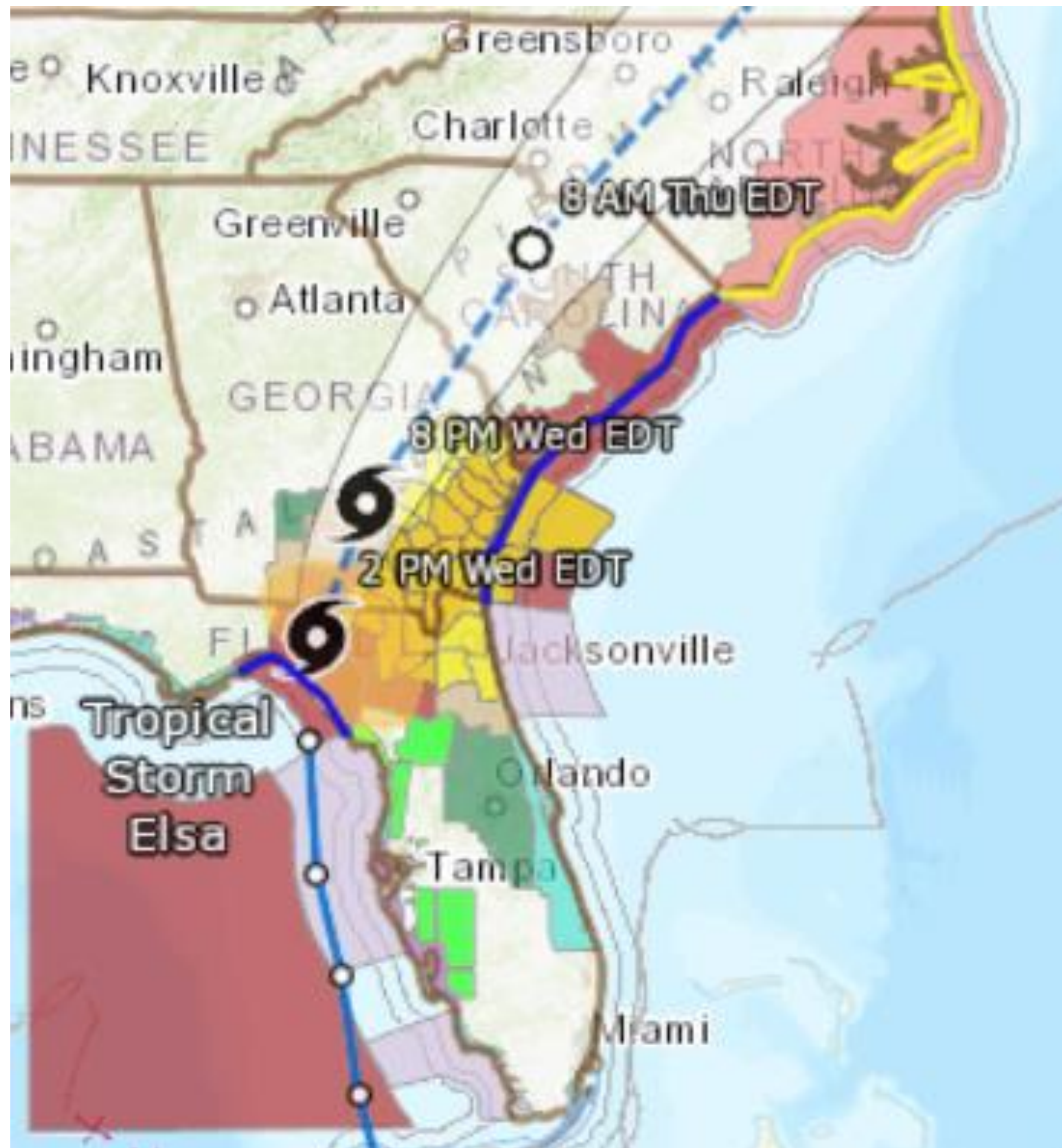


# Hazards Map

## Tropical Storm Elsa



Tropical Analysis and Forecast Branch  
NWS National Hurricane Center



■ <https://nowcoast.noaa.gov/>

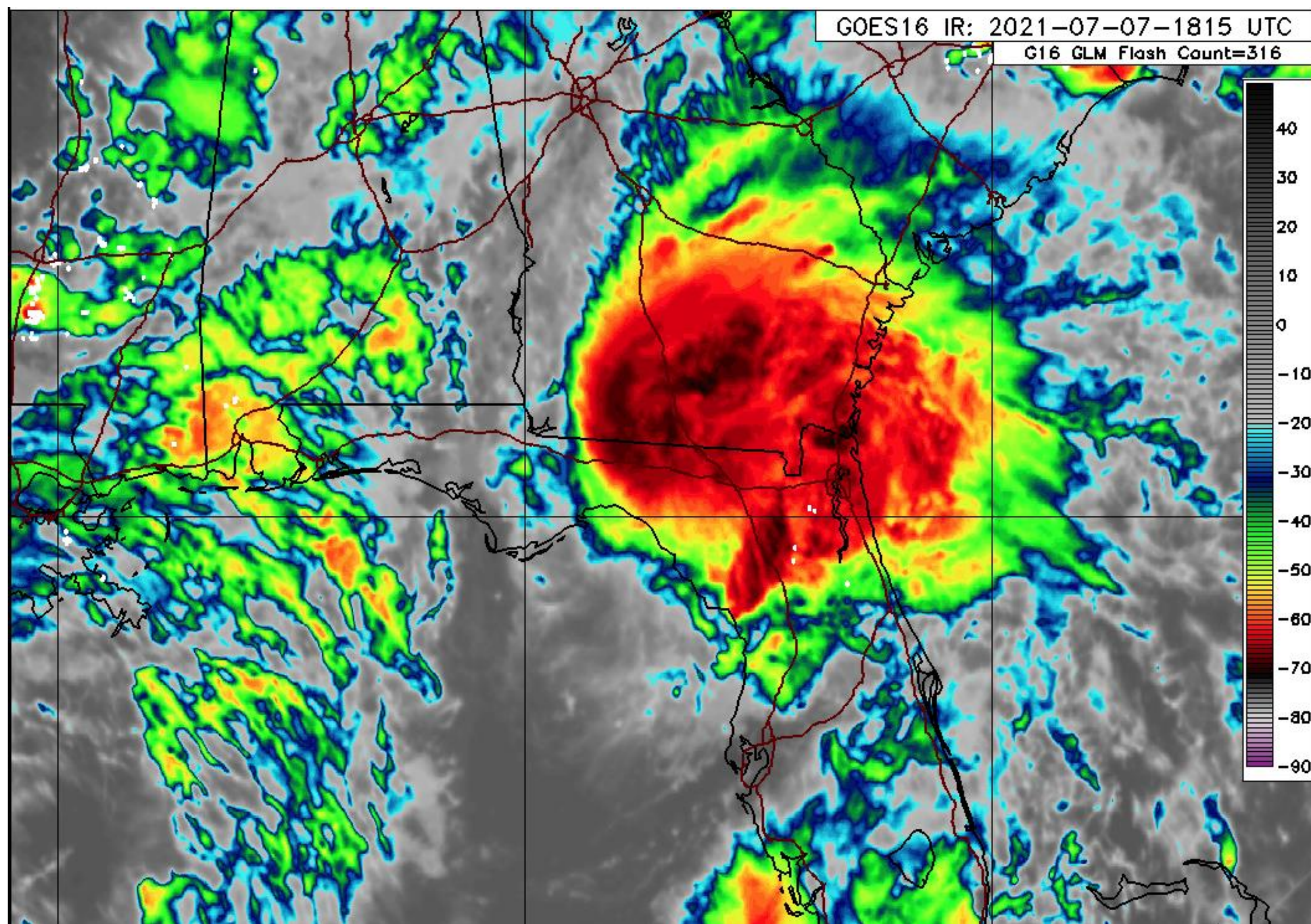


# Current Satellite View

Tropical Storm Elsa



Tropical Analysis and Forecast Branch  
NWS National Hurricane Center



...Elsa is inland and weakening over northern Florida...

Summary of 200 PM EDT...1800 UTC...  
Information

Location... 30.3N 83.5W  
About 90 nm...W of Jacksonville FL  
Maximum Sustained Winds...45 kt or 50 mph  
Present Movement...360 degrees at 12 kt  
Minimum Central Pressure...1002 mb

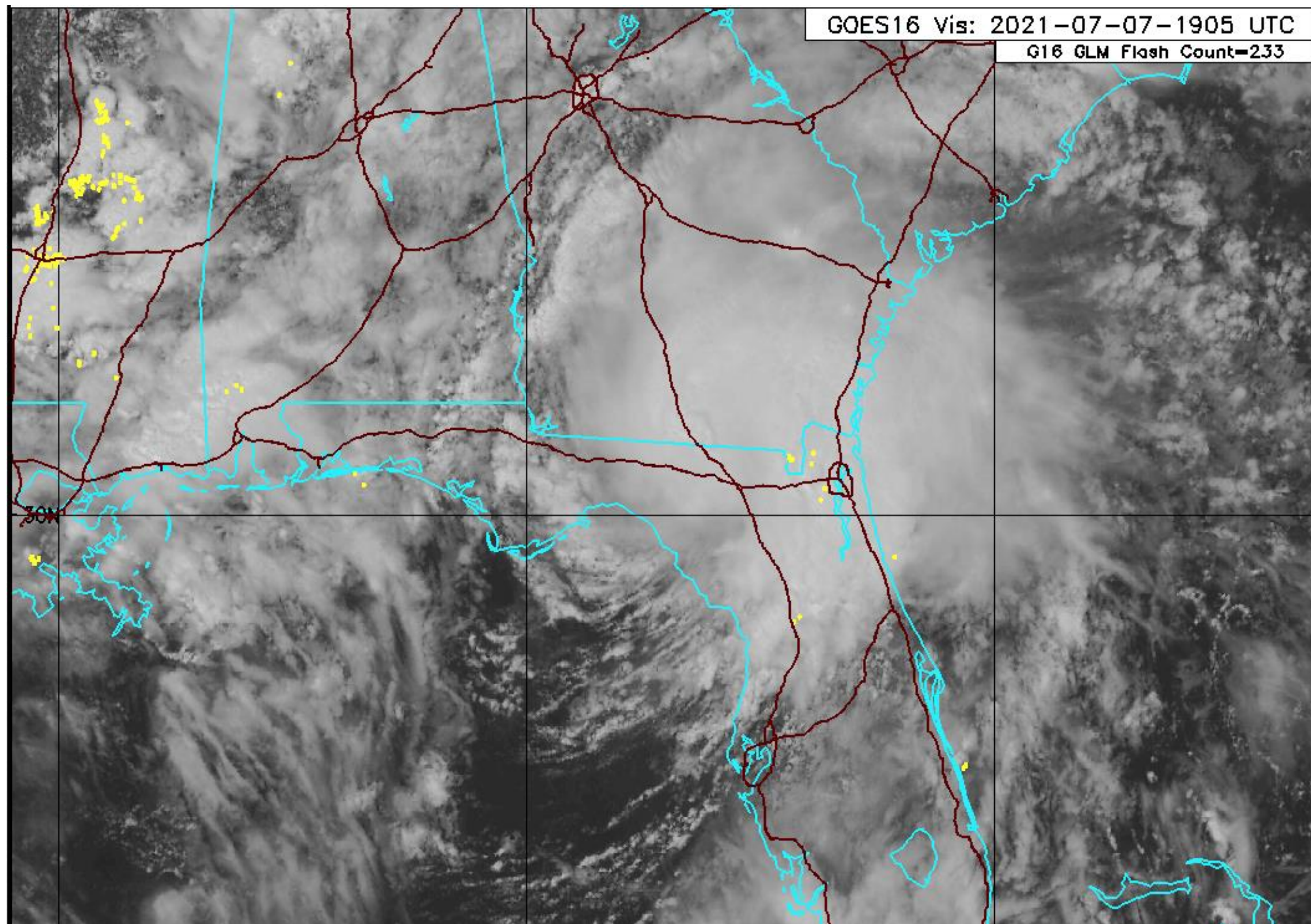


# Graphical Overview

Tropical Storm Elsa 19:05 – 19:15 UTC



Tropical Analysis and Forecast Branch  
NWS National Hurricane Center



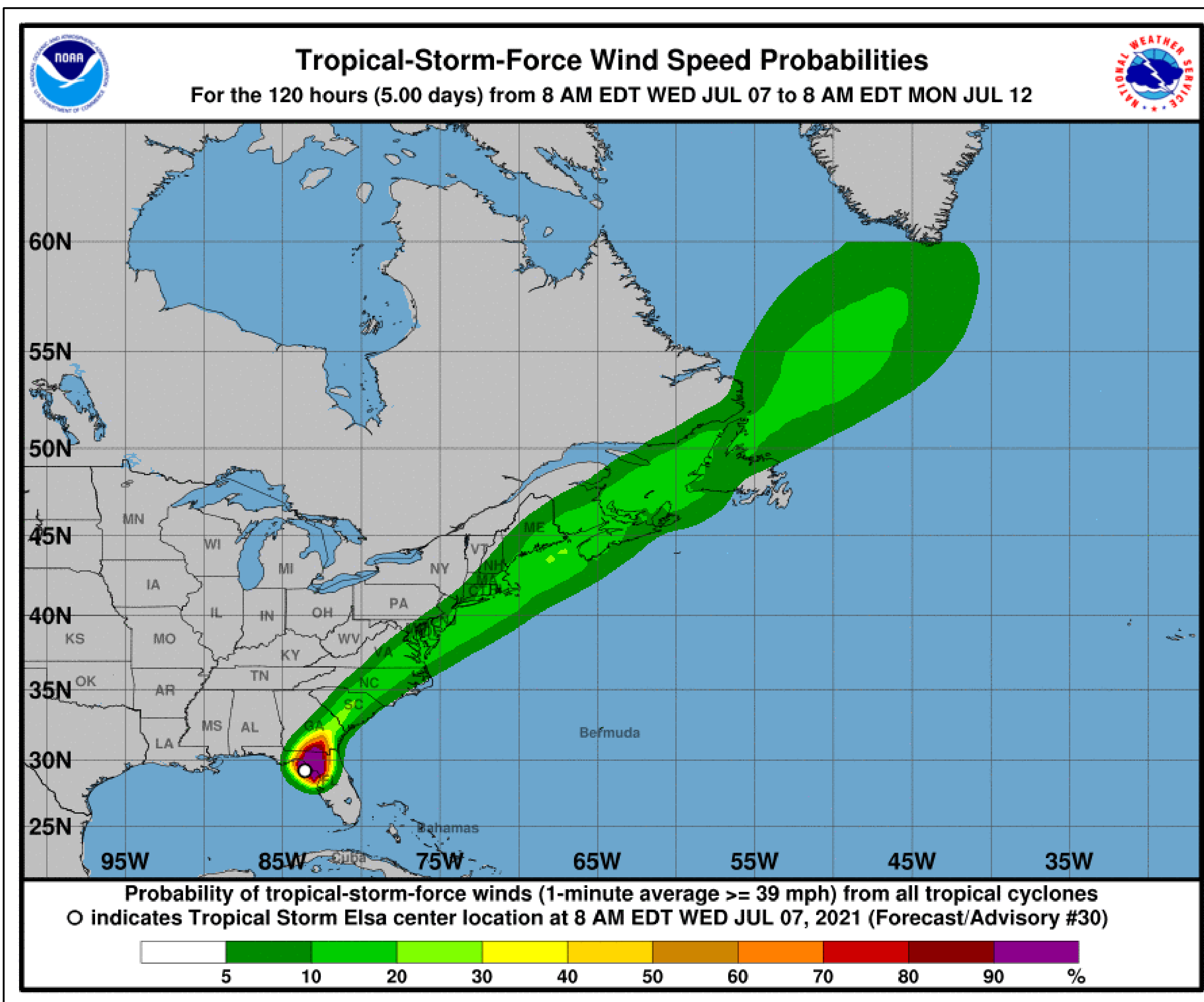


# T.S. Wind Speed Probabilities

Tropical Storm Elsa



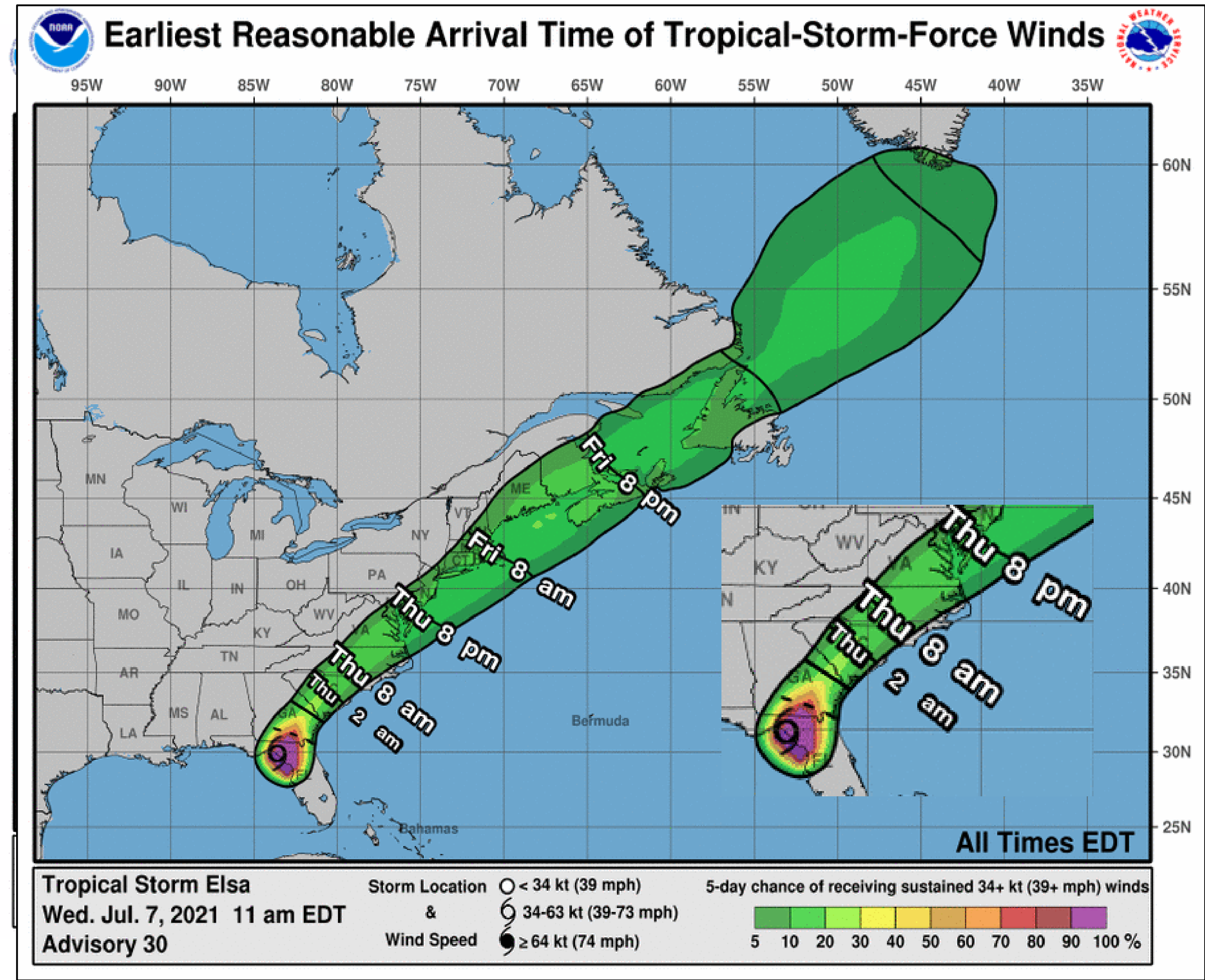
Tropical Analysis and Forecast Branch  
NWS National Hurricane Center



- Probabilities of sustained tropical storm force winds (34 kt to 63 kt) over the next 5 days, based off this cyclone's wind radii and track.
- Clear or dark green are the lowest chances of 0-30%.
- Yellow to orange is 31-70%
- Red through purple are the highest probabilities of 71%-100%
- See the color bar below the image for more details.



Tropical Storm Elsa



- The earliest reasonable time of arrival of Tropical Storm Force Winds (34 kt to 63 kt) for this cyclone based off the current track and wind radii.
- See the color bar below the image for more details.

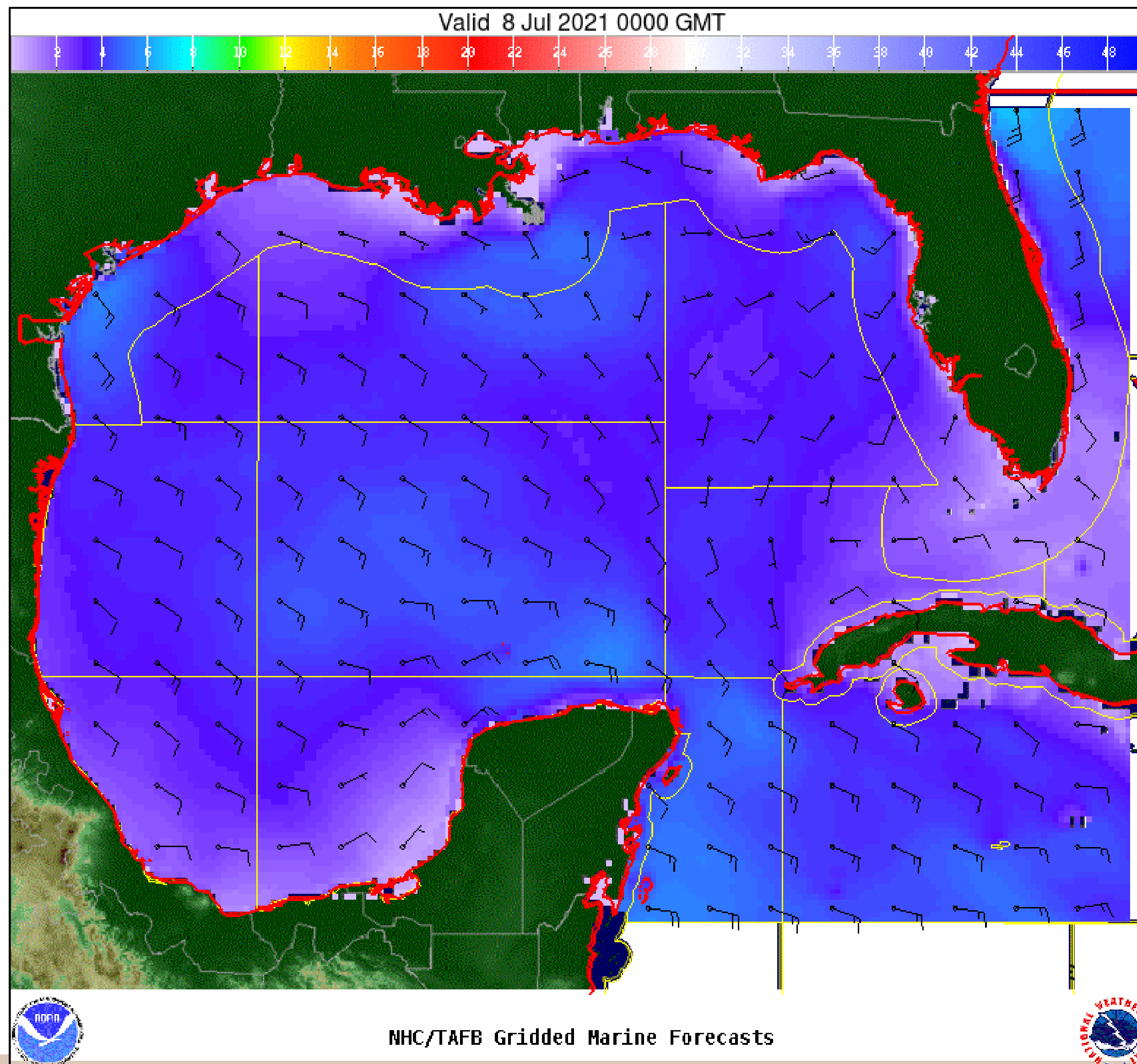


# Wind And Waves

## Tropical Storm Elsa

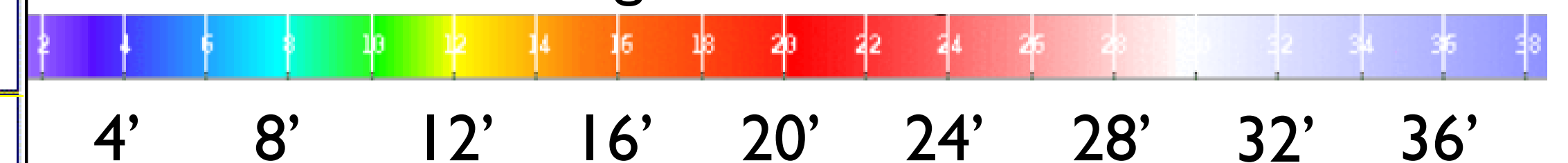


Tropical Analysis and Forecast Branch  
NWS National Hurricane Center



12 Hour Forecast  
8 Jul 0000 UTC or 8 pm  
Inland across S central Georgia  
Peak Winds: 35 kt  
Peak Seas: 4-5 ft NE Gulf waters

■ Wave heights are in feet



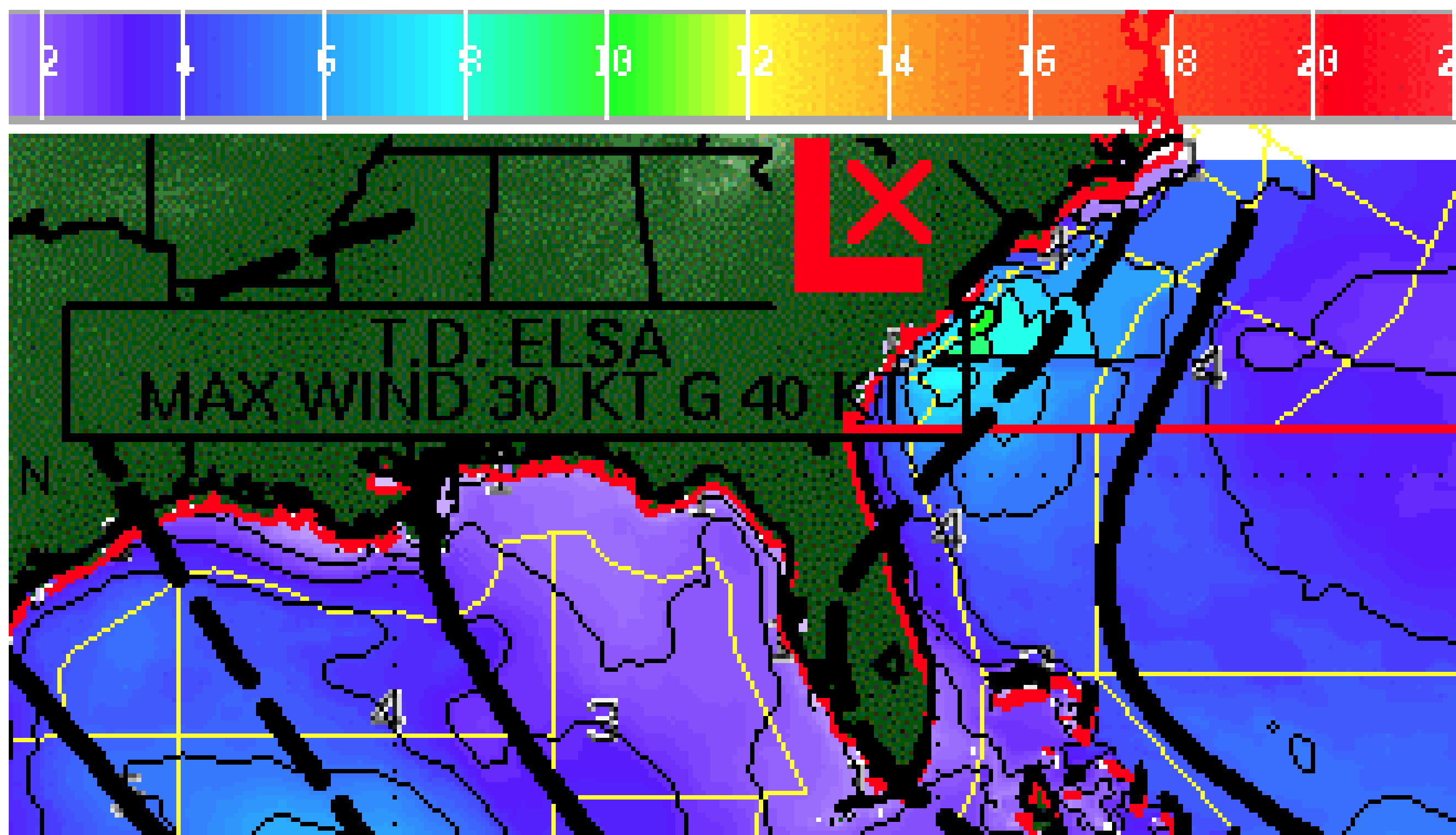


# Wind And Waves

Tropical Storm Elsa



Tropical Analysis and Forecast Branch  
NWS National Hurricane Center



24 Hour Forecast

8 Jul 1200 UTC or 8 am  
Inland across central SC

Peak Winds: 30 kt

Peak Seas: 4-5 ft off JAX to 9-10 ft off Charleston, SC

■ Wave heights are in feet



4' 8' 12' 16' 20' 24' 28' 32' 36'

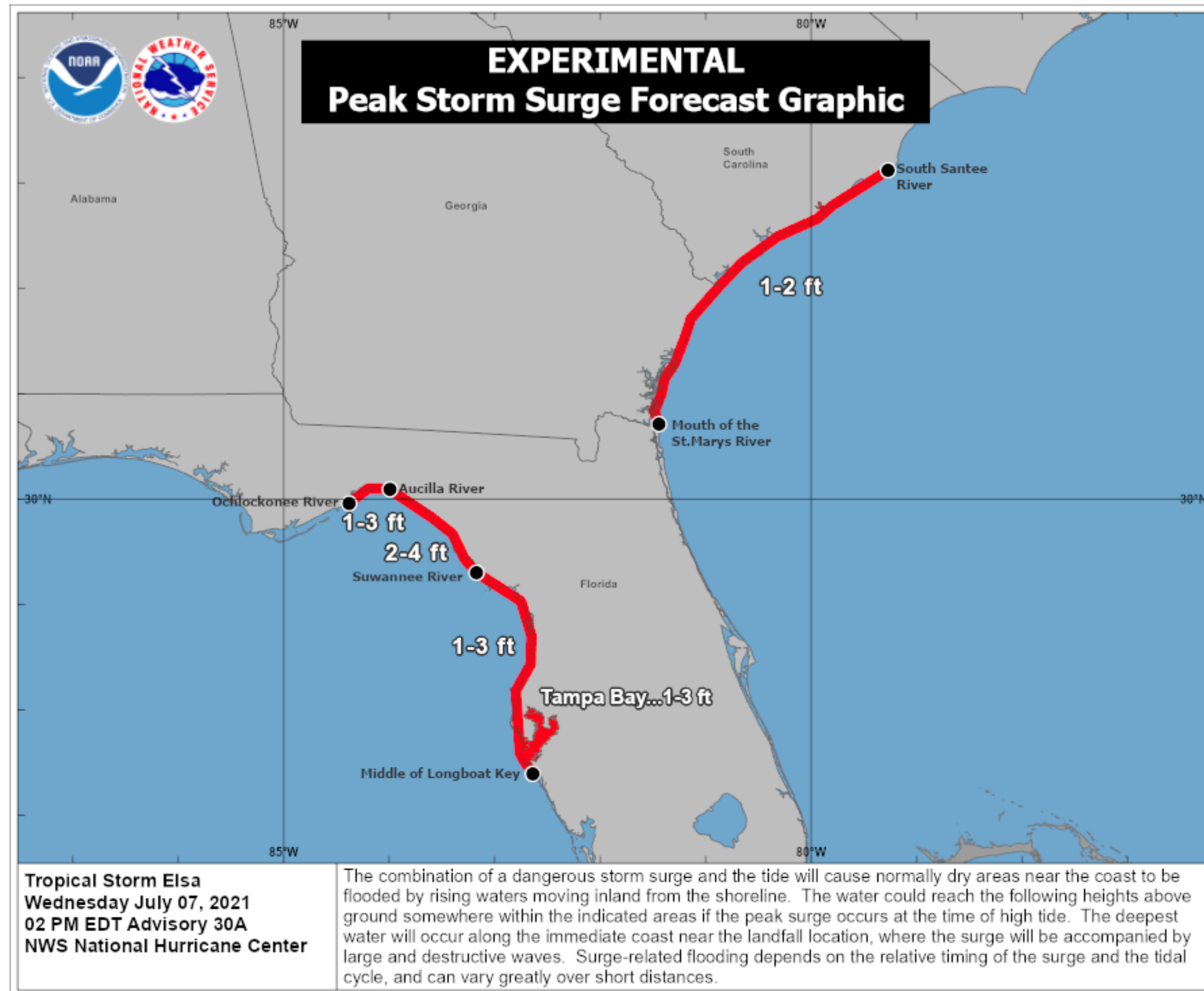


# Potential Peak Storm Surge / Watches and Warnings



Tropical Analysis and Forecast Branch  
NWS National Hurricane Center

## Tropical Storm Elsa



- Potential storm surge is represented in feet above the ground at any given point.

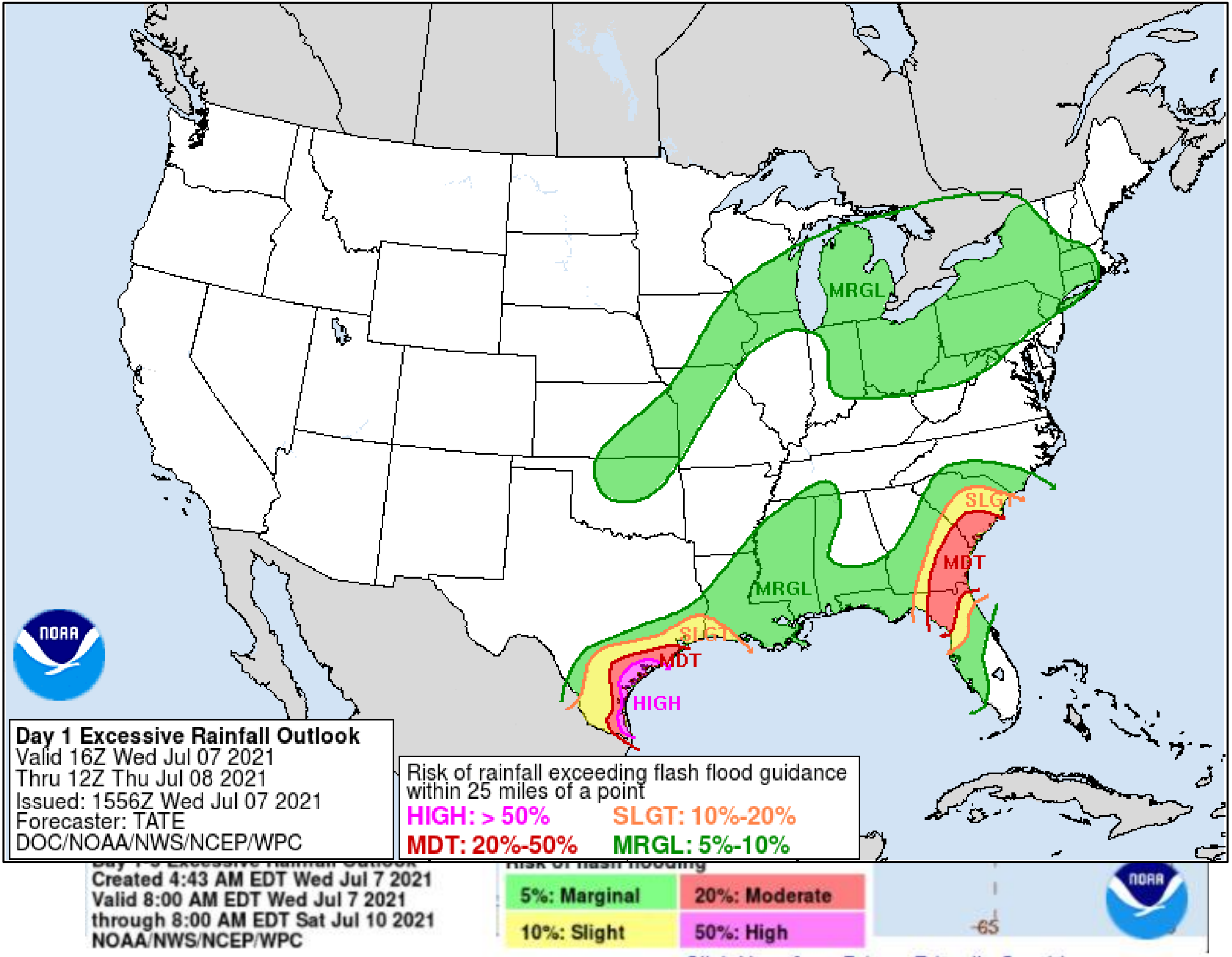
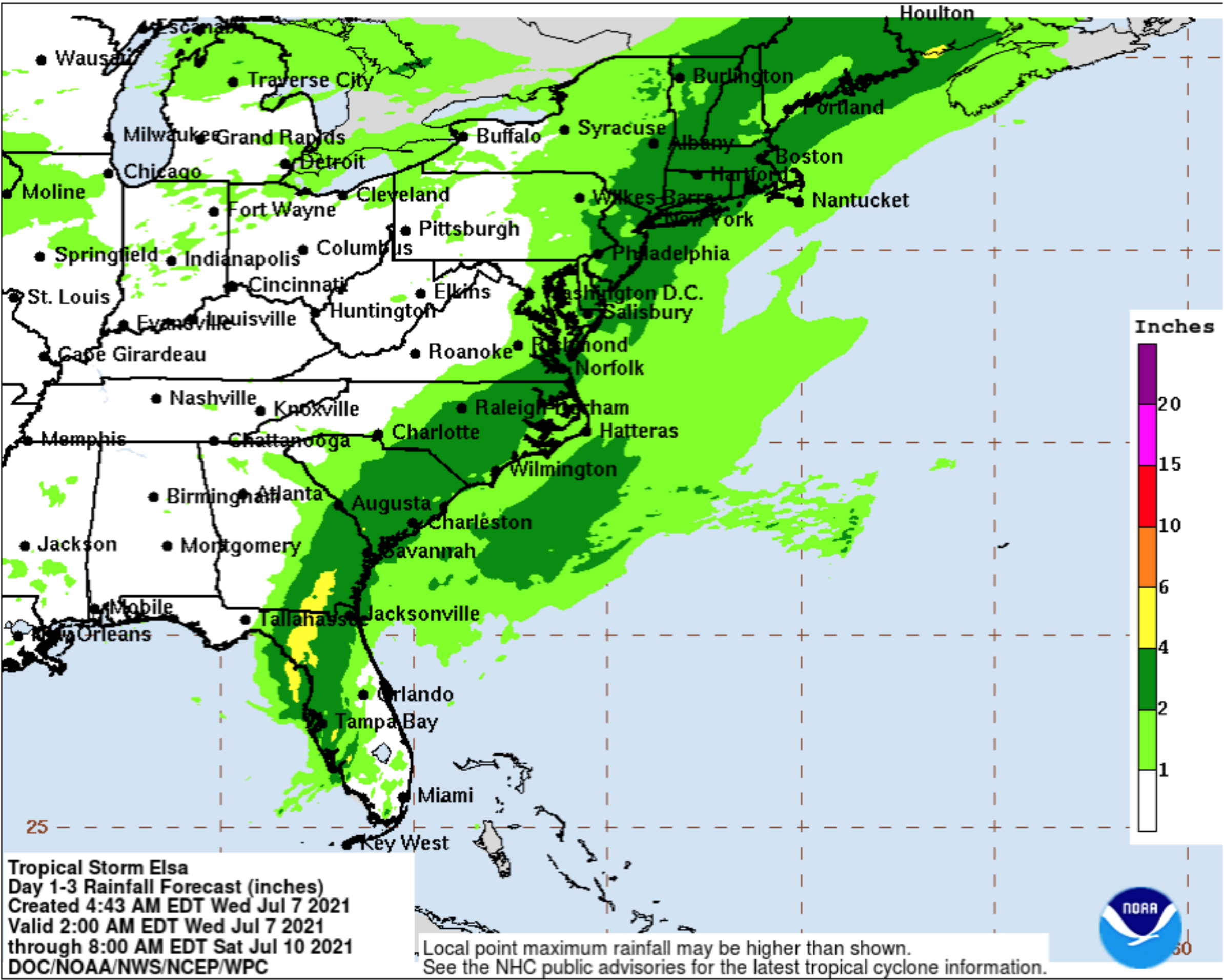


# Expected Storm Total Rainfall and Chance of Rainfall Flooding



Tropical Analysis and Forecast Branch  
NWS National Hurricane Center

## Tropical Storm Elsa



Total rainfall in inches through 10 Jul 1200 UTC or 8 am.

Refer to map legend for Valid Time

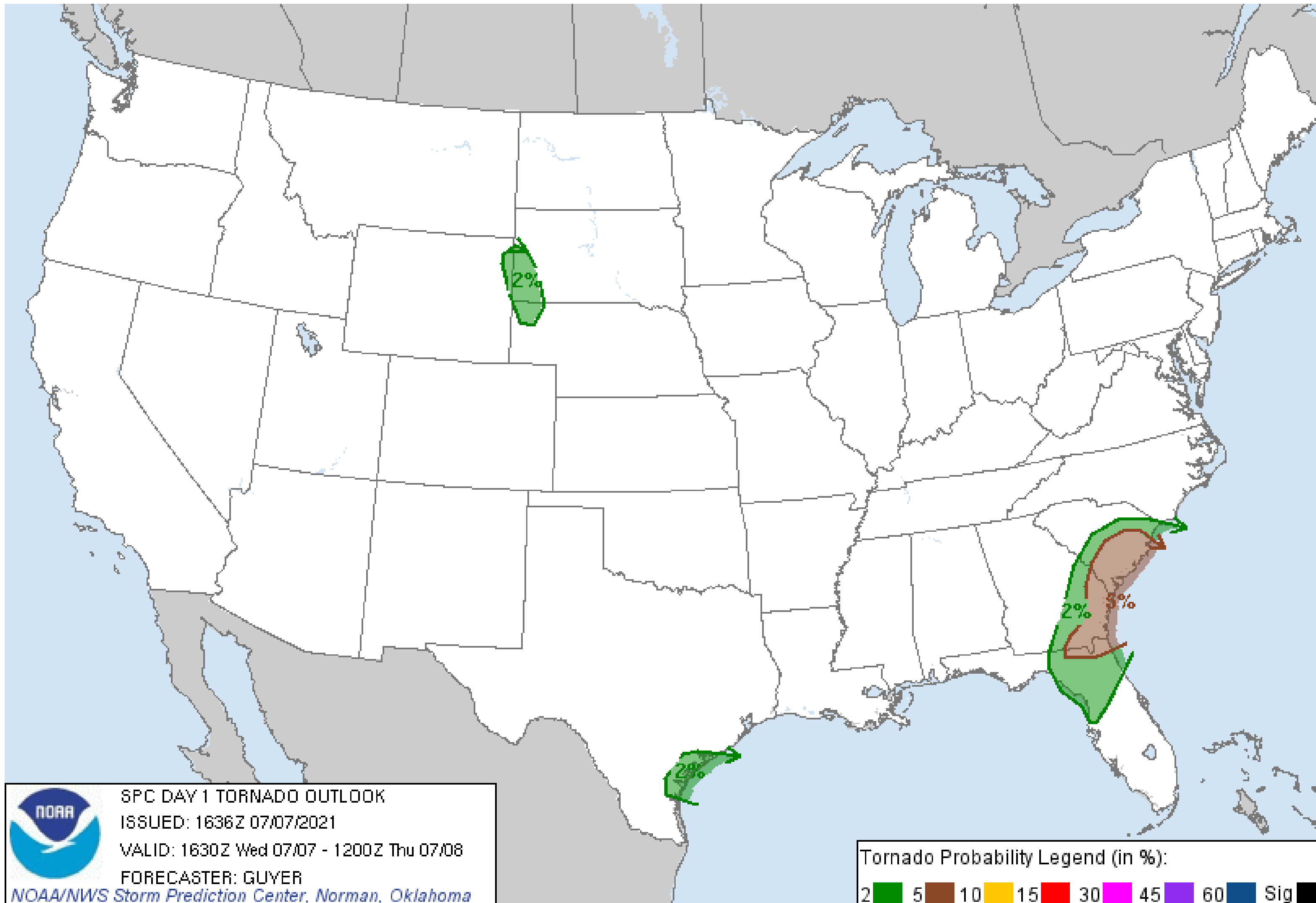


# Tornado Outlook – Day 1

Tropical Storm Elsa



Tropical Analysis and Forecast Branch  
NWS National Hurricane Center



Tornado threat “Low” Elsa  
moves across N Florida

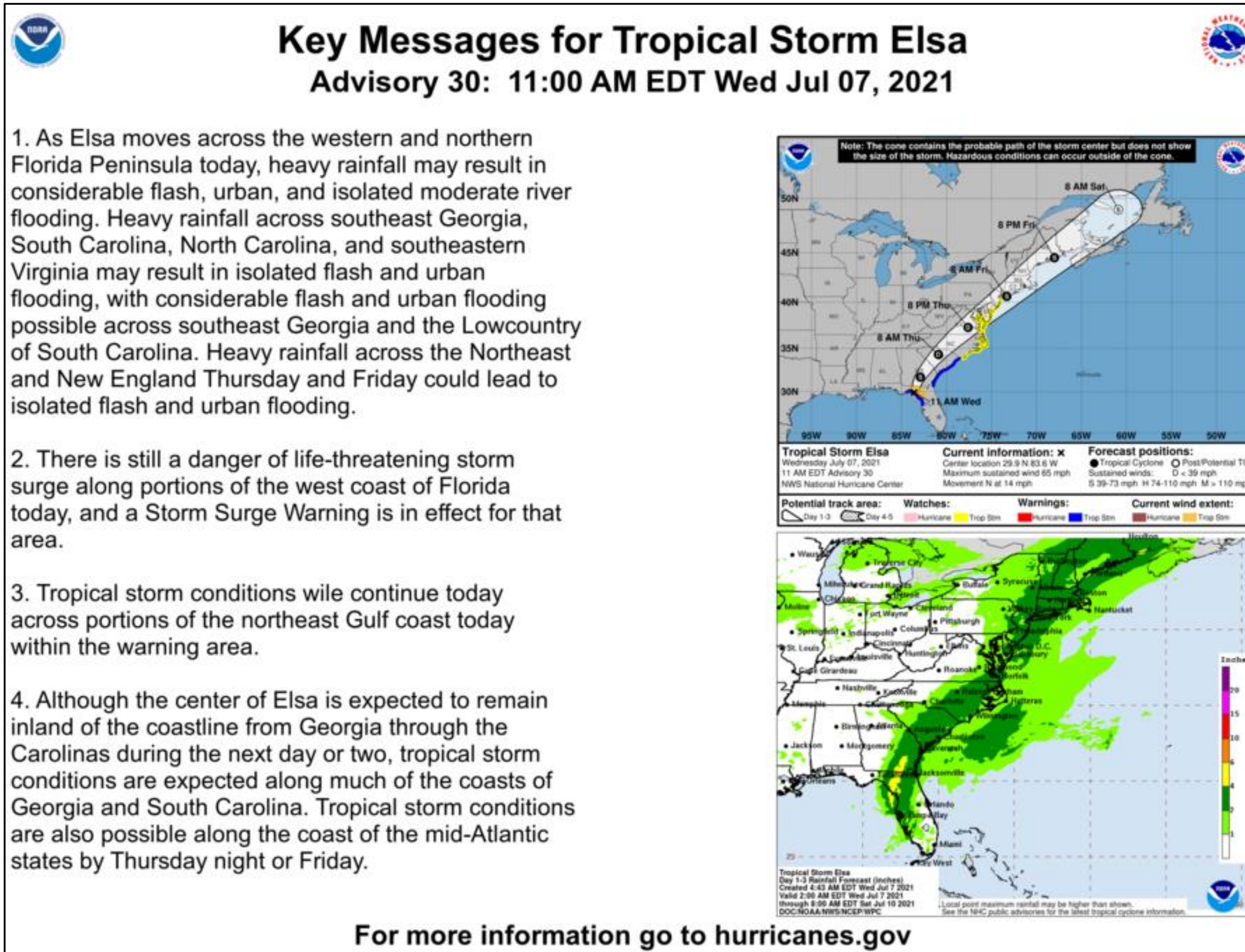


# Key Messages

## Tropical Storm Elsa



Tropical Analysis and Forecast Branch  
NWS National Hurricane Center



- Tropical Storm conditions are currently moving inland and exiting the NE Gulf waters of Florida. Marine conditions across the NE Gulf are expected to quickly improve this evening through tonight.
- Elsa expected to begin moving NE and accelerate across Atlantic coastal states next 72 hours, before becoming extra tropical across the Canadian Maritimes early Sat.
- S to SW winds of 25-30 kt and seas building 6-10 ft expected across the near shore Atlantic waters from Jacksonville to Charleston during the next 24 hours.





# TROPICAL STORM ELSA BRIEFING

You can contact the Tropical Analysis and Forecast Branch at  
305-229-4424

*The Next Briefing Will Be:  
Thursday 8:15 AM EDT*

*You can always find get the latest graphics and information for this storm at [www.hurricanes.gov](http://www.hurricanes.gov)*



NHC\_TAFB

[www.nhc.noaa.gov](http://www.nhc.noaa.gov)