

IMPACTS FOR USCG District 7 (through next 5 days)

Winds – Moderate

Storm Surge – None

Rainfall/Flash Flooding – None

Tornadoes – None

Waves - Moderate

TROPICAL STORM BRET BRIEFING



8:15 AM EDT
Saturday, June 24, 2023

Prepared by:
Stephen Konarik

*Tropical Analysis and Forecast Branch
NWS National Hurricane Center*



NHC_TAFB

www.nhc.noaa.gov

Impacts

Tropical Storm Bret



Tropical Analysis and Forecast Branch
NWS National Hurricane Center

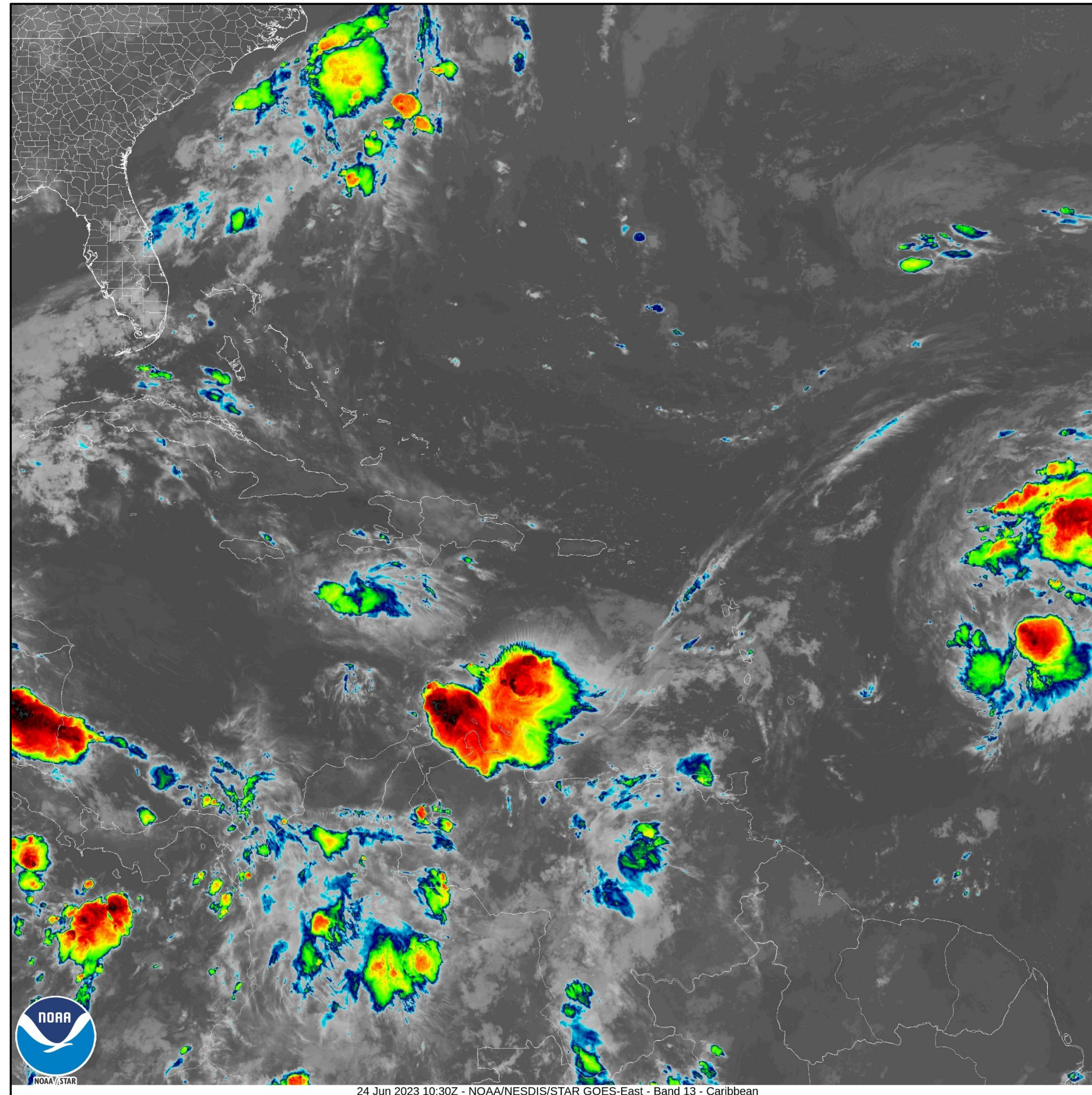
Winds – Moderate
Waves - Moderate

Current Satellite View

Tropical Storm Bret



Tropical Analysis and Forecast Branch
NWS National Hurricane Center

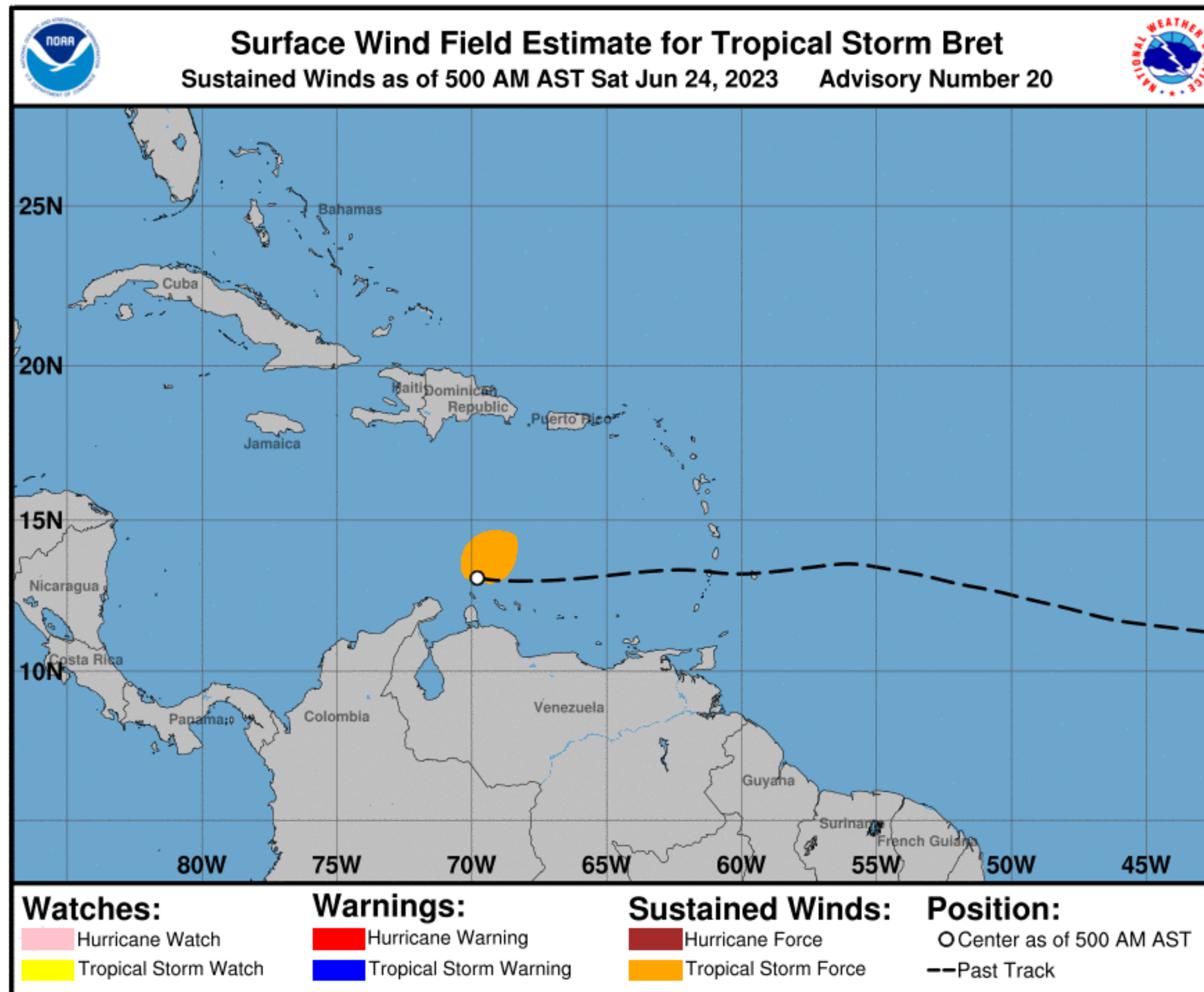


Situation Overview

Tropical Storm Bret



Tropical Analysis and Forecast Branch
NWS National Hurricane Center



...BRET WEAKENING AS IT PASSES JUST NORTH OF ARUBA...

SUMMARY OF 500 AM AST...0900 UTC...INFORMATION

LOCATION...13.1N 69.8W

ABOUT 40 NM...70 KM NNE OF ARUBA
ABOUT 300 NM...600 KM SSE PUERTO RICO

MAXIMUM SUSTAINED WINDS...40 KT

PRESENT MOVEMENT...W OR 270 DEGREES AT 16 KT

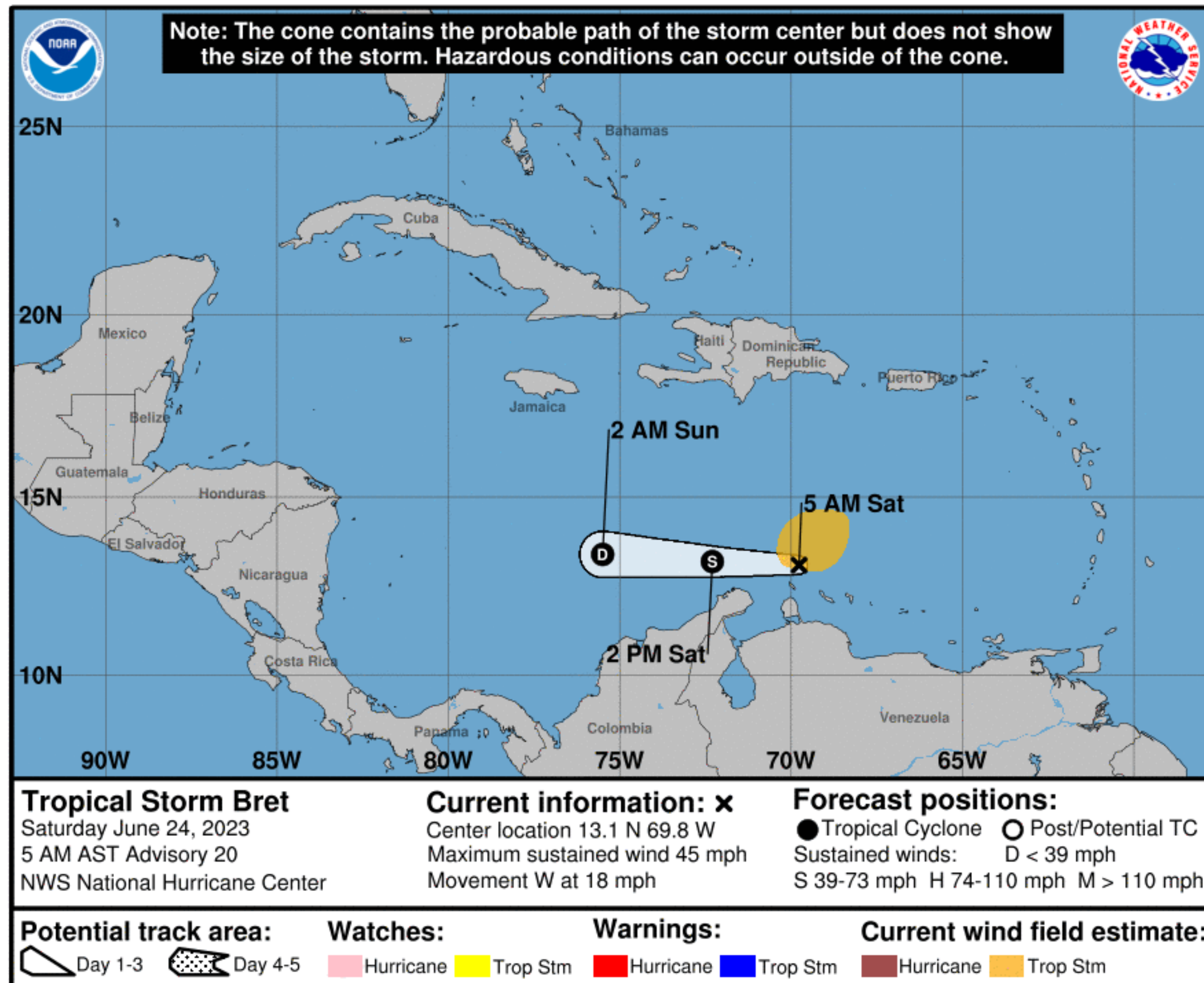
PEAK SEAS: 15 ft
34 KT winds: 34 KT.....120NE 0SE 0SW 50NW.
12 FT SEAS..180NE 15SE 15SW 120NW.

Forecast Information

Tropical Storm Bret



Tropical Analysis and Forecast Branch
NWS National Hurricane Center



...FORECAST TO DEGENERATE INTO A TROUGH OVER THE WEEKEND...

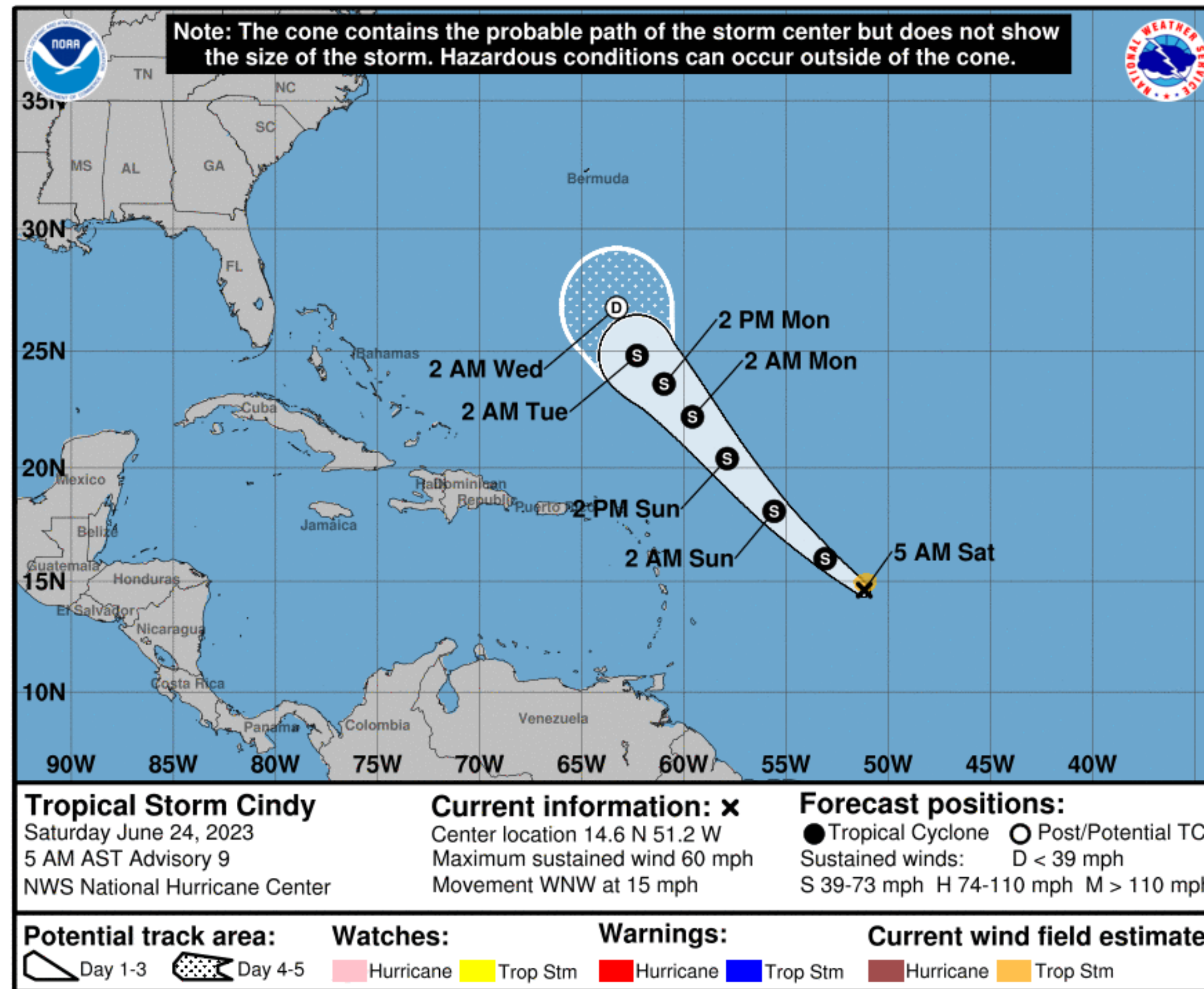
- Tropical Storm Warning for portions of south-central Caribbean
- Winds and seas will gradually subside Sunday

NOTE: Do not focus on the exact track. Impacts can occur well outside the area enclosed by the cone.

Update on Tropical Storm Cindy



Tropical Analysis and Forecast Branch
NWS National Hurricane Center



TROPICAL STORM CINDY

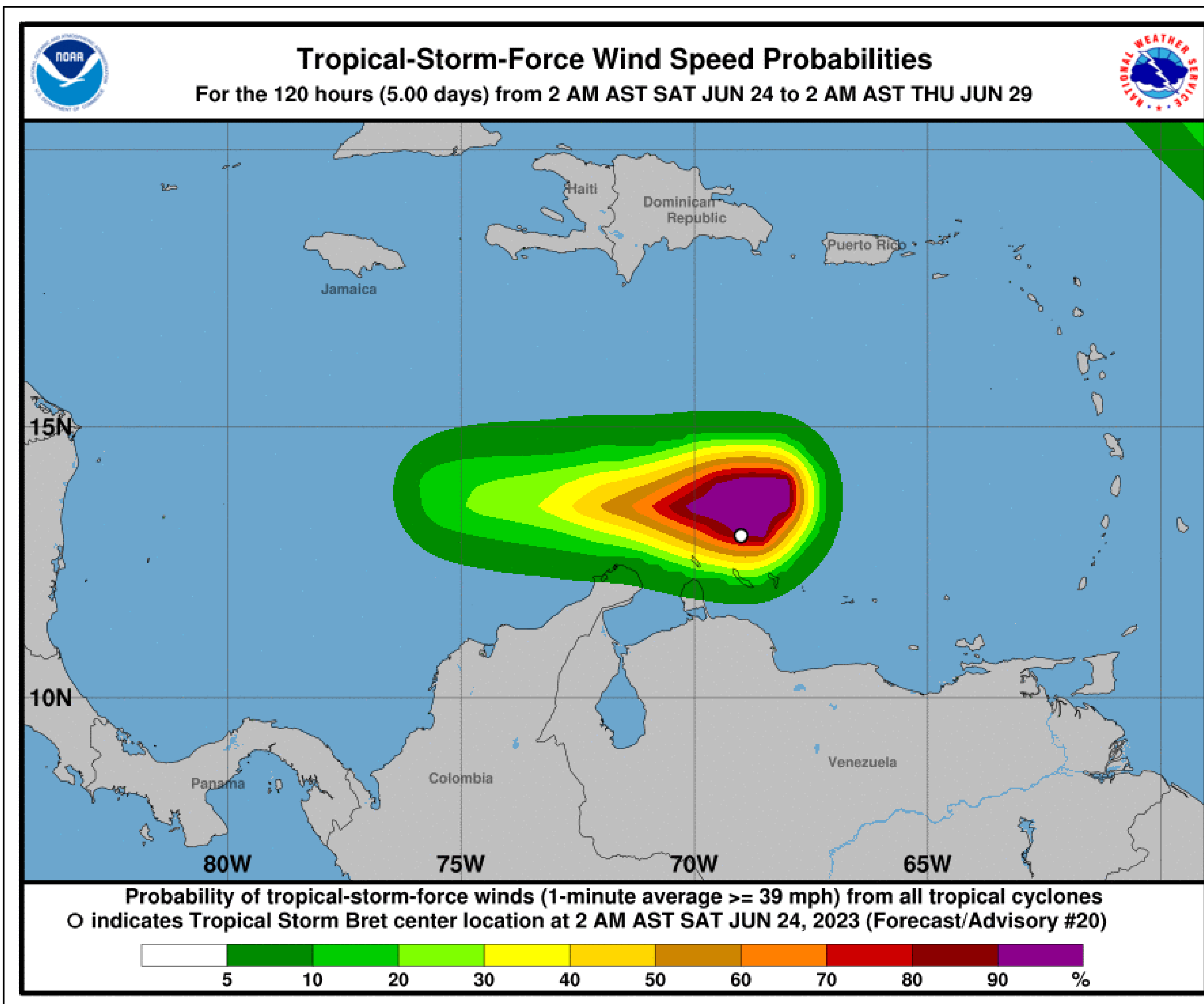
- Max winds 55 kt
- Seas to 16 kt
- No threat to land
- Not expected to become hurricane

T.S. Wind Speed Probabilities

Tropical Storm Bret



Tropical Analysis and Forecast Branch
NWS National Hurricane Center



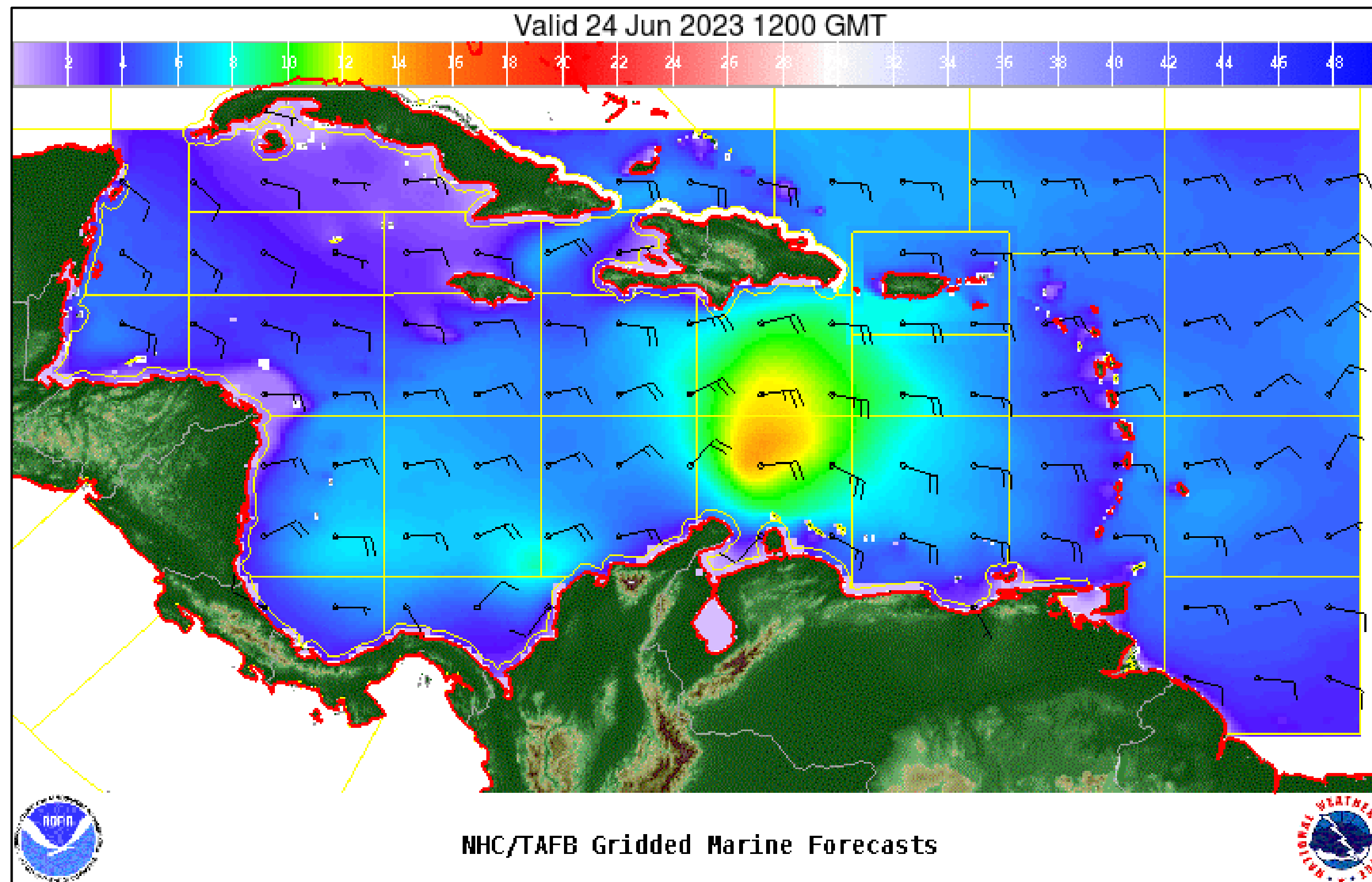
NO THREAT TO LAND

Wind And Waves

Tropical Storm Bret



Tropical Analysis and Forecast Branch
NWS National Hurricane Center



Current Conditions
Peak Winds: 40 KT
Peak Seas: 15 FT

- Wave heights are in feet



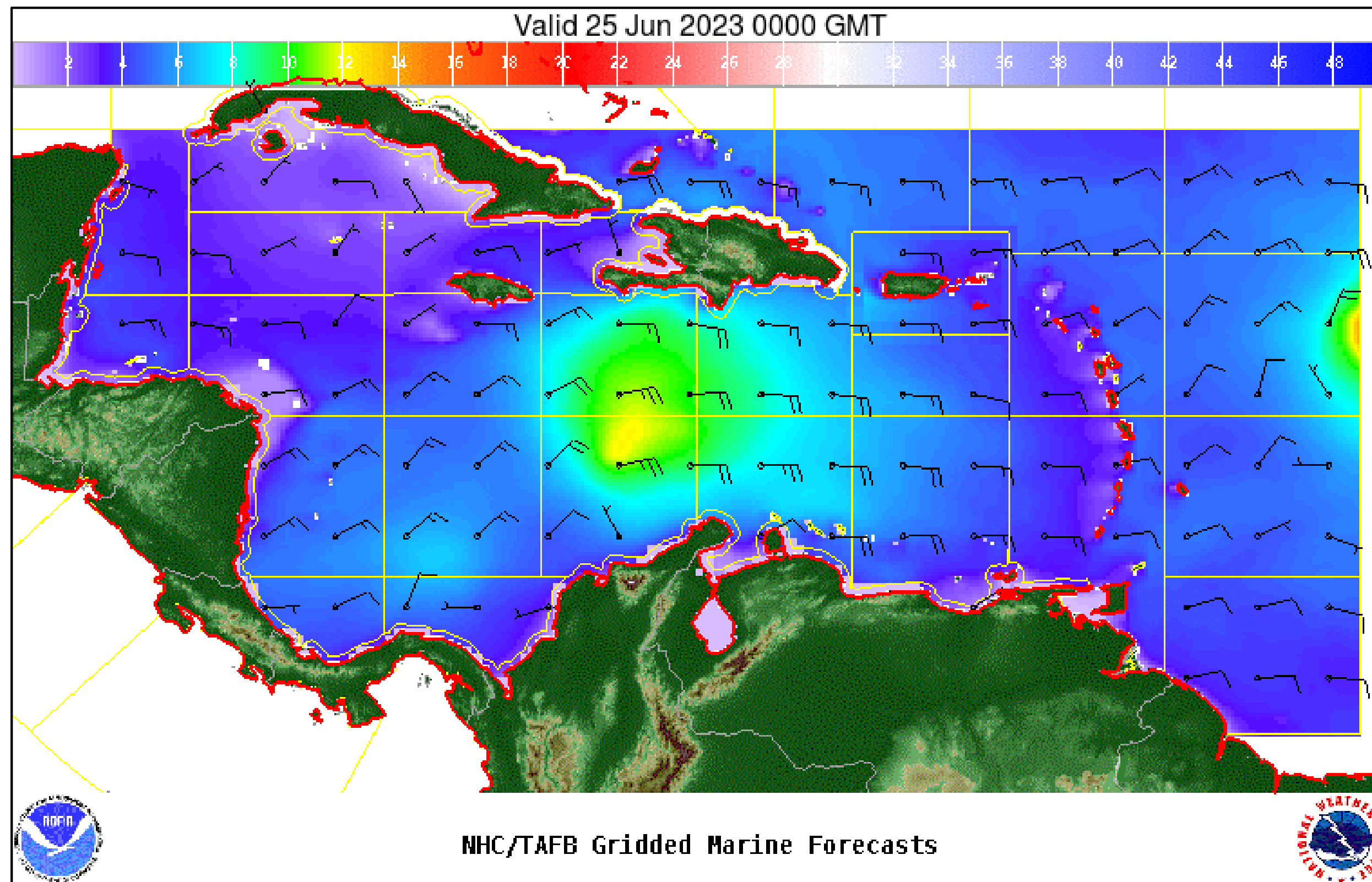
Significant Wave Height (ft)

Wind And Waves

Tropical Storm Bret



Tropical Analysis and Forecast Branch
NWS National Hurricane Center



THIS EVENING

Peak Winds: 35 KT

Peak Seas: 13 FT

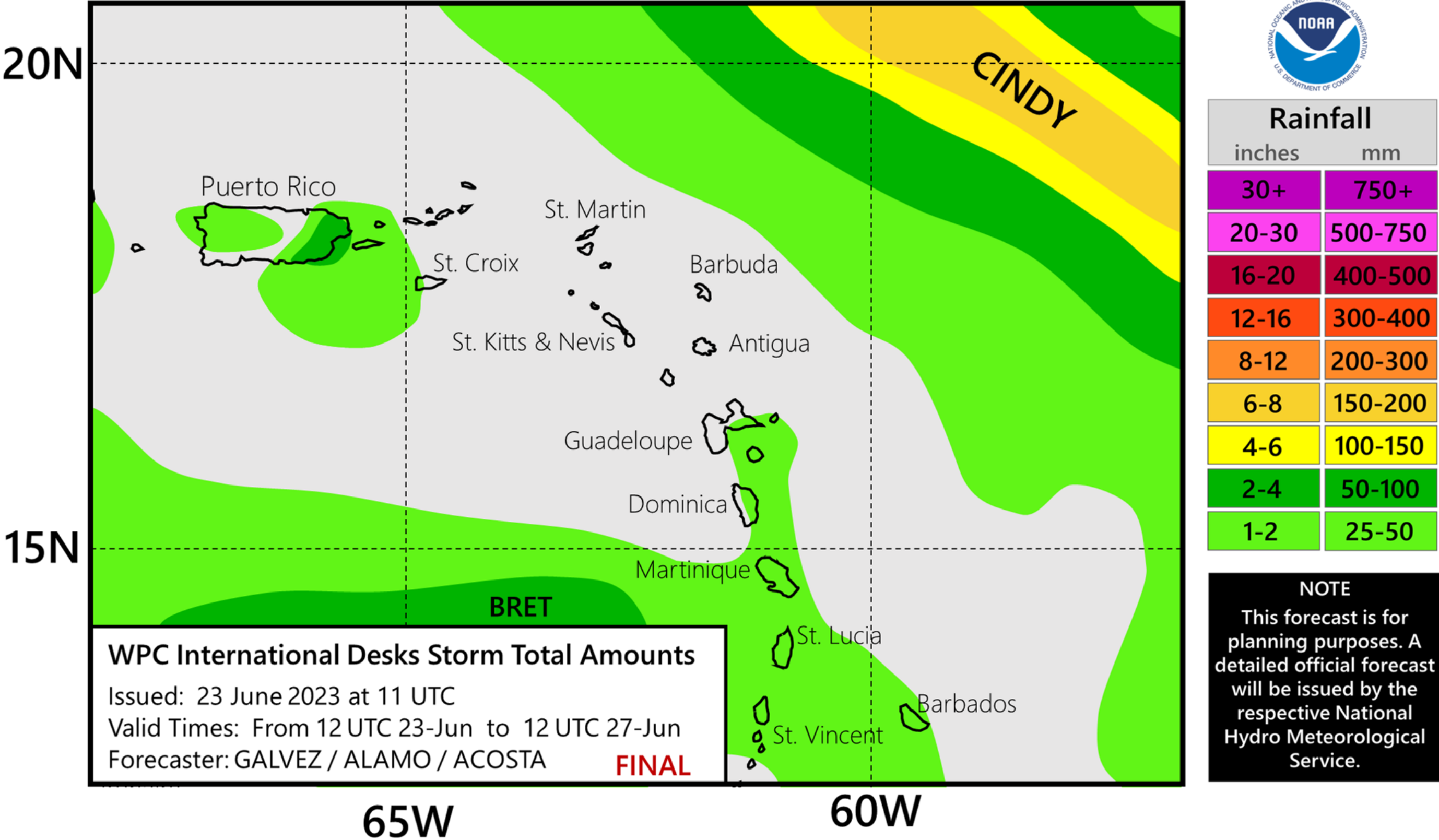
- Wave heights are in feet



Significant Wave Height (ft)



Tropical Storm Cindy Total Rainfall



Key Messages

Tropical Storm Bret



Tropical Analysis and Forecast Branch
NWS National Hurricane Center

- Bret moving W through south-central Caribbean
- Peak seas currently 15 kt
- Seas fall below 12 ft tonight
- Conditions continue to improve Sunday



TROPICAL STORM BRET BRIEFING

You can contact the Tropical Analysis and Forecast Branch at
305-229-4424

You can always find get the latest graphics and information for this storm at www.hurricanes.gov



NHC_TAFB

www.nhc.noaa.gov