

**IMPACTS FOR D7**

**Winds/US Coast – Low**

**Winds/SRR – Low**

**Waves/US Coastal – Low**

**Waves/SRR – Low**

through next 5 days

**US Storm Surge – Unknown**

**US Rainfall/Flash Flooding – Medium**

**US Tornadoes – Unknown**

# INVEST 97L BRIEFING

8:30 AM EDT

Monday, September 23, 2024

Prepared by:

**Chris Landsea**

*Tropical Analysis and Forecast Branch  
NWS National Hurricane Center*



NHC\_TAFB

[www.nhc.noaa.gov](http://www.nhc.noaa.gov)

# Situation Overview

Invest 97L



Tropical Analysis and Forecast Branch  
NWS National Hurricane Center

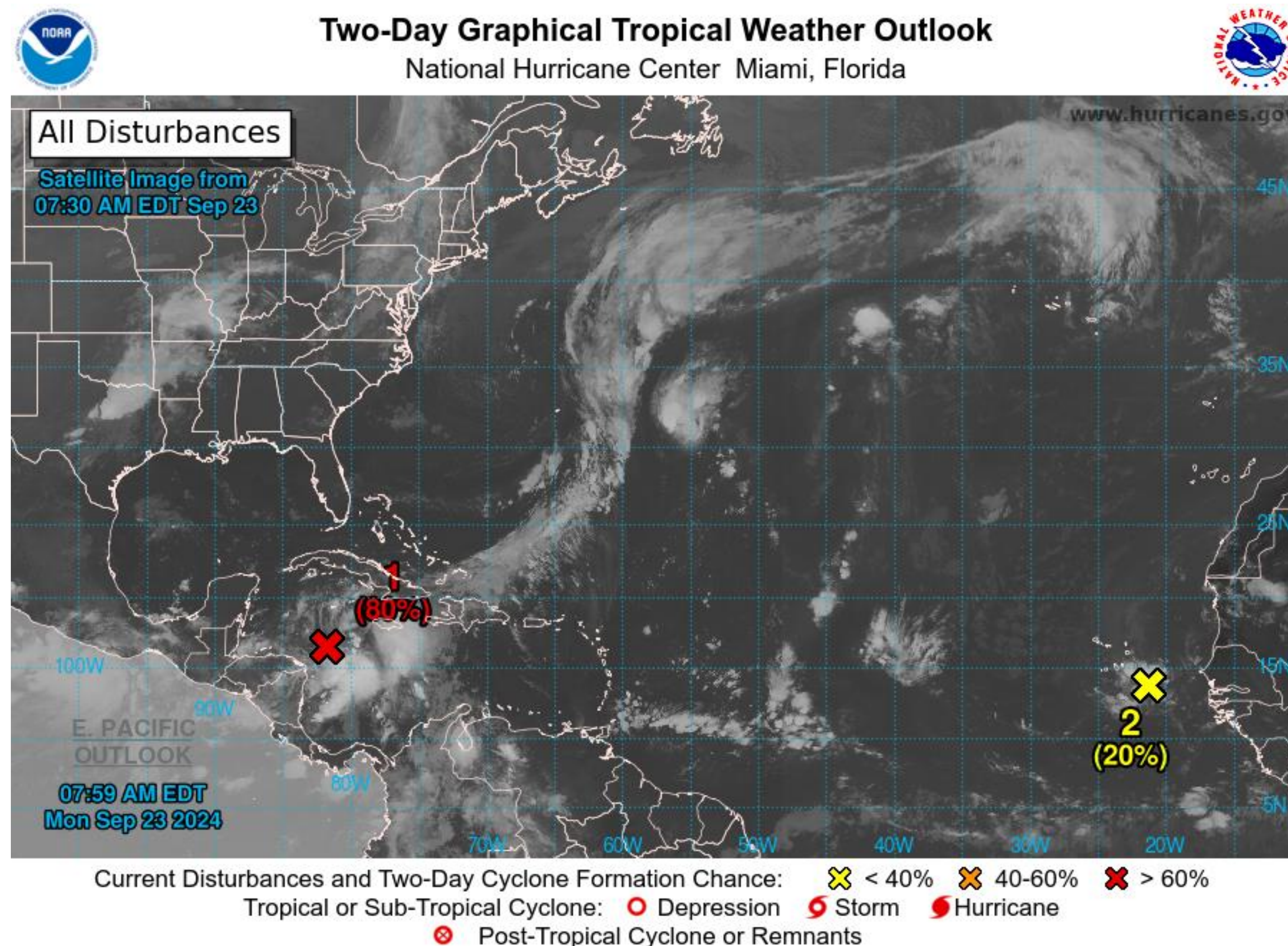
- A broad area of low pressure is currently located over the northwestern Caribbean Sea.
- Environmental conditions appear favorable for further development of this system.
  - A tropical depression or storm is likely to form within the next day or two as the system moves northward across the northwestern Caribbean Sea and into the southeastern Gulf of Mexico, where additional development is expected.
- This system is expected to produce heavy rains over portions of Central America during the next several days.
- Later this week, the system is forecast to move generally northward across the eastern Gulf of Mexico, and interests along the northern and northeastern Gulf Coast should also closely monitor the progress of this system.

# Tropical Weather Outlook

Invest 97L



Tropical Analysis and Forecast Branch  
NWS National Hurricane Center



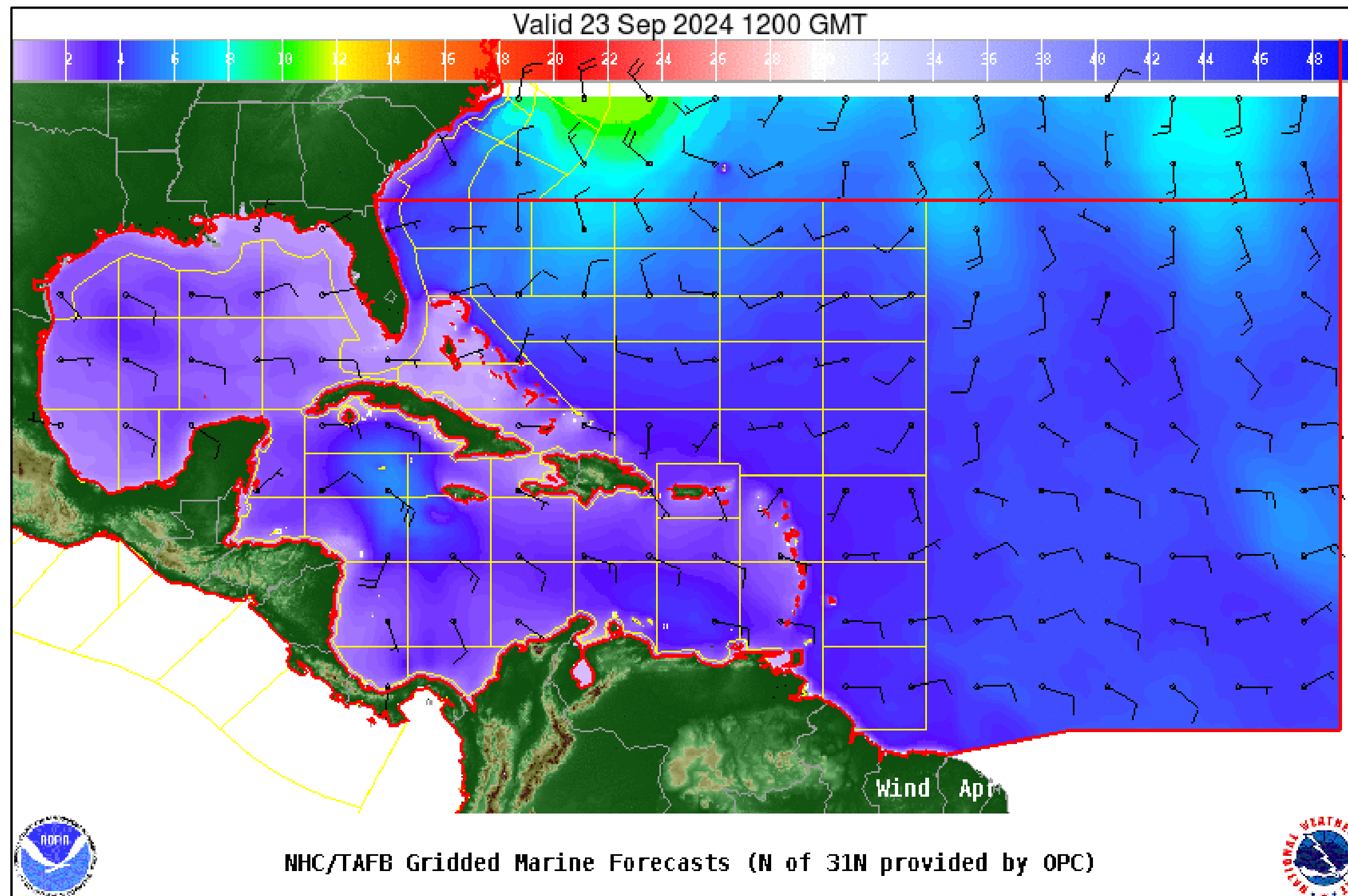
- A broad area of low pressure is currently located over the northwestern Caribbean Sea.
- There is a high chance of tropical cyclone formation in the next 48 hours

# Wind And Waves

Invest 97L



Tropical Analysis and Forecast Branch  
NWS National Hurricane Center



## Current Conditions

**Monday, September 23 at 8:00 AM EDT**

Peak Winds: 10 kt

Peak Seas: 3 ft

- Wave heights are in feet



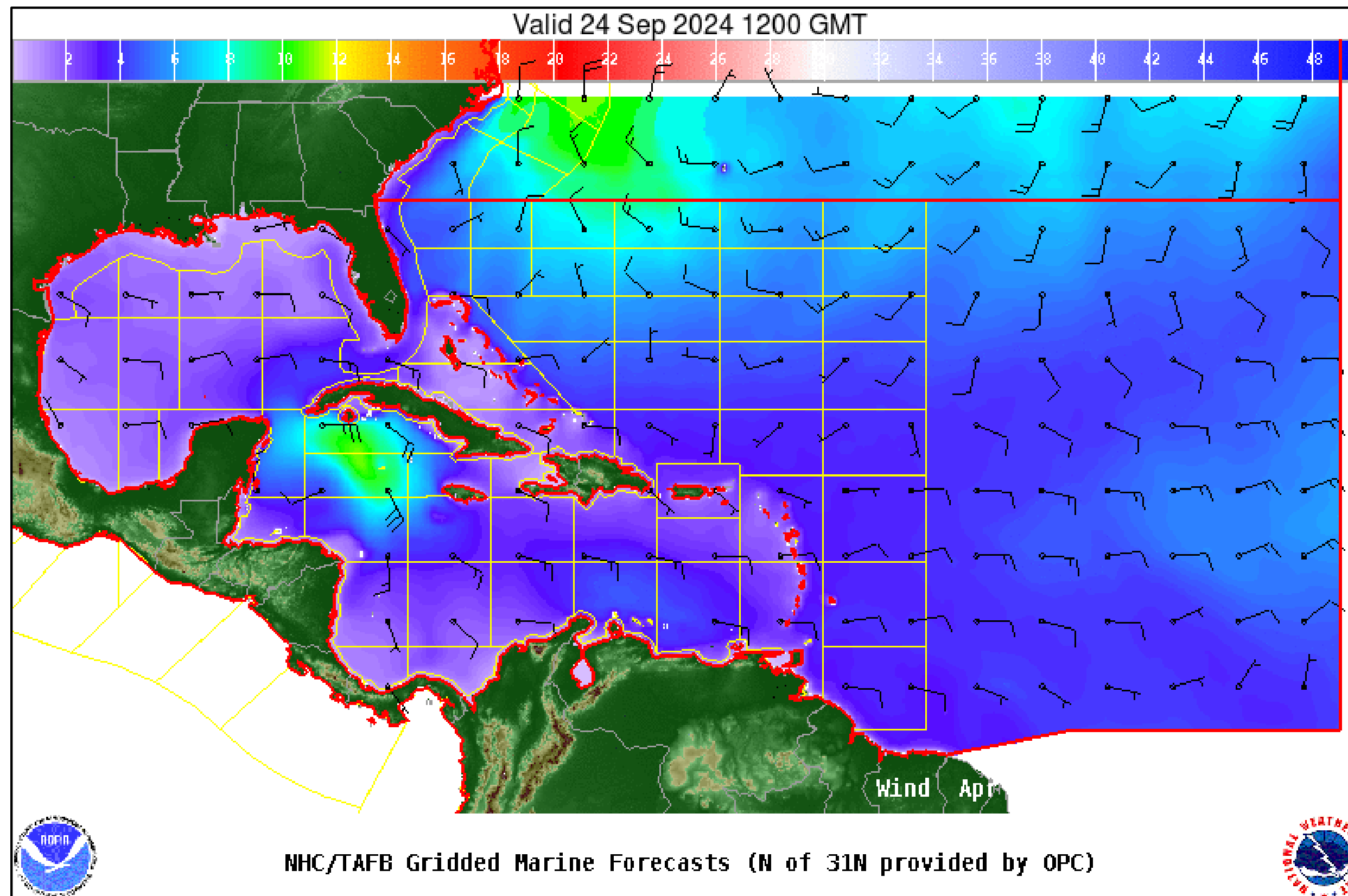
Significant Wave Height (ft)

# Wind And Waves

Invest 97L



Tropical Analysis and Forecast Branch  
NWS National Hurricane Center



## 24 Hour Forecast

**Tuesday, September 24 at 8:00 AM EDT**

Peak Winds: 20 kt

Peak Seas: 6 ft

- Wave heights are in feet



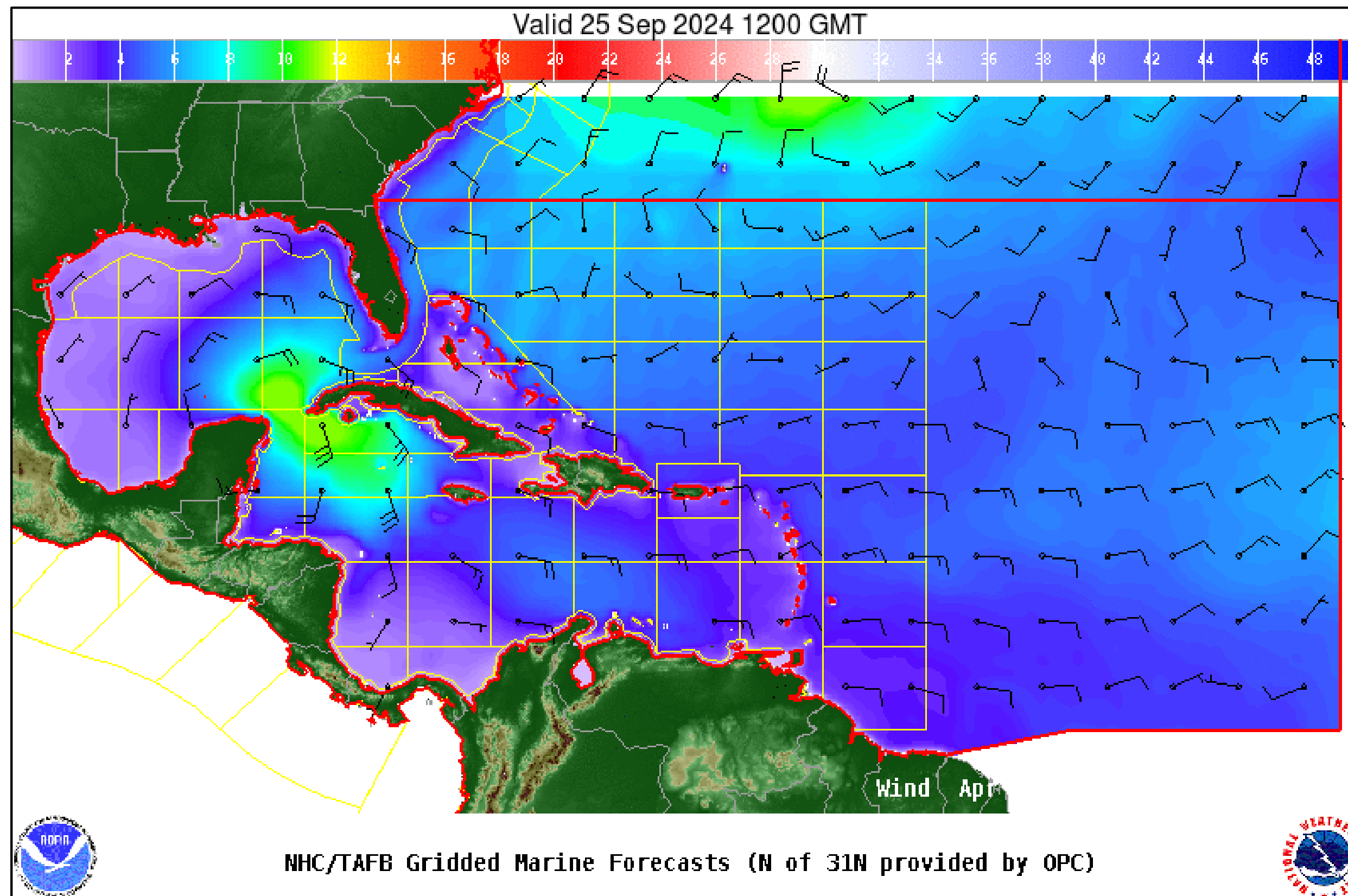
Significant Wave Height (ft)

# Wind And Waves

Invest 97L



Tropical Analysis and Forecast Branch  
NWS National Hurricane Center



## 48 Hour Forecast

Wednesday, September 25 at 8:00 AM EDT

Peak Winds: 30 kt

Peak Seas: 11 ft

- Wave heights are in feet



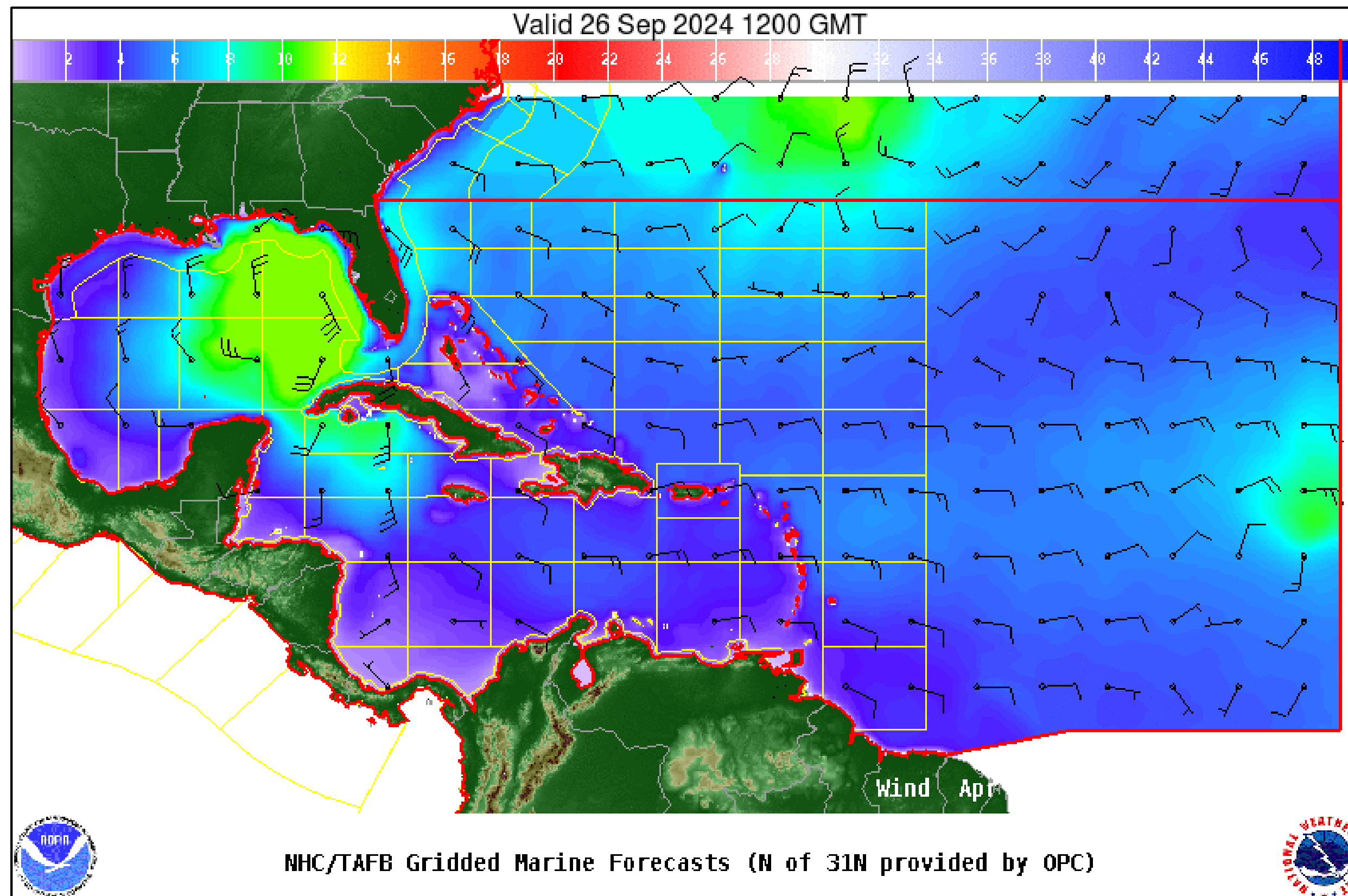
Significant Wave Height (ft)

# Wind And Waves

Invest 97L



Tropical Analysis and Forecast Branch  
NWS National Hurricane Center



## 72Hour Forecast

Thursday, September 26 at 8:00 AM EDT

Peak Winds: 35 kt

Peak Seas: 11 ft

- Wave heights are in feet



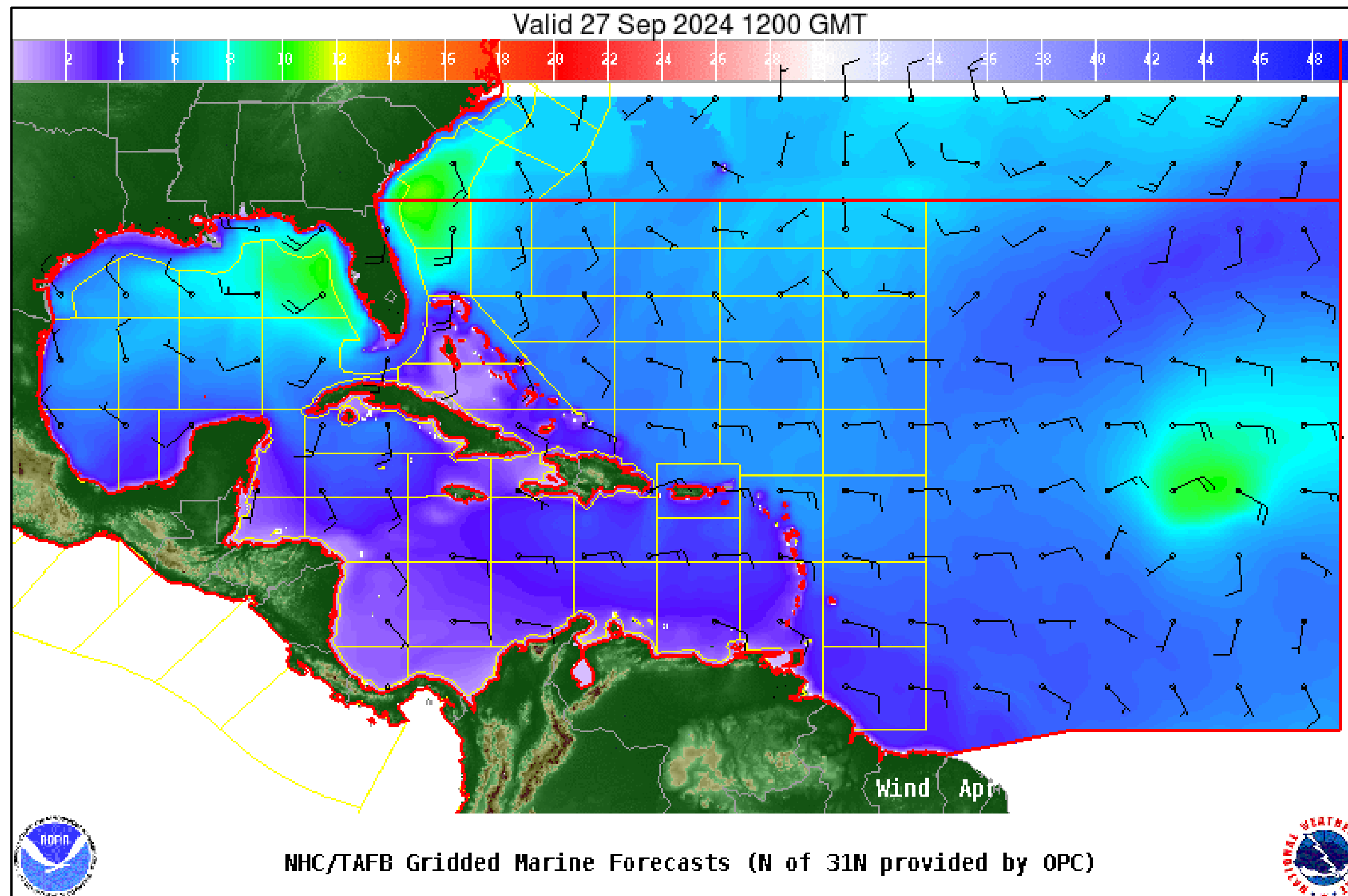
Significant Wave Height (ft)

# Wind And Waves

Invest 97L



Tropical Analysis and Forecast Branch  
NWS National Hurricane Center



96 Hour Forecast

Friday, September 27 at 8:00 AM EDT

Peak Winds: 25 kt

Peak Seas: 11 ft

- Wave heights are in feet



Significant Wave Height (ft)

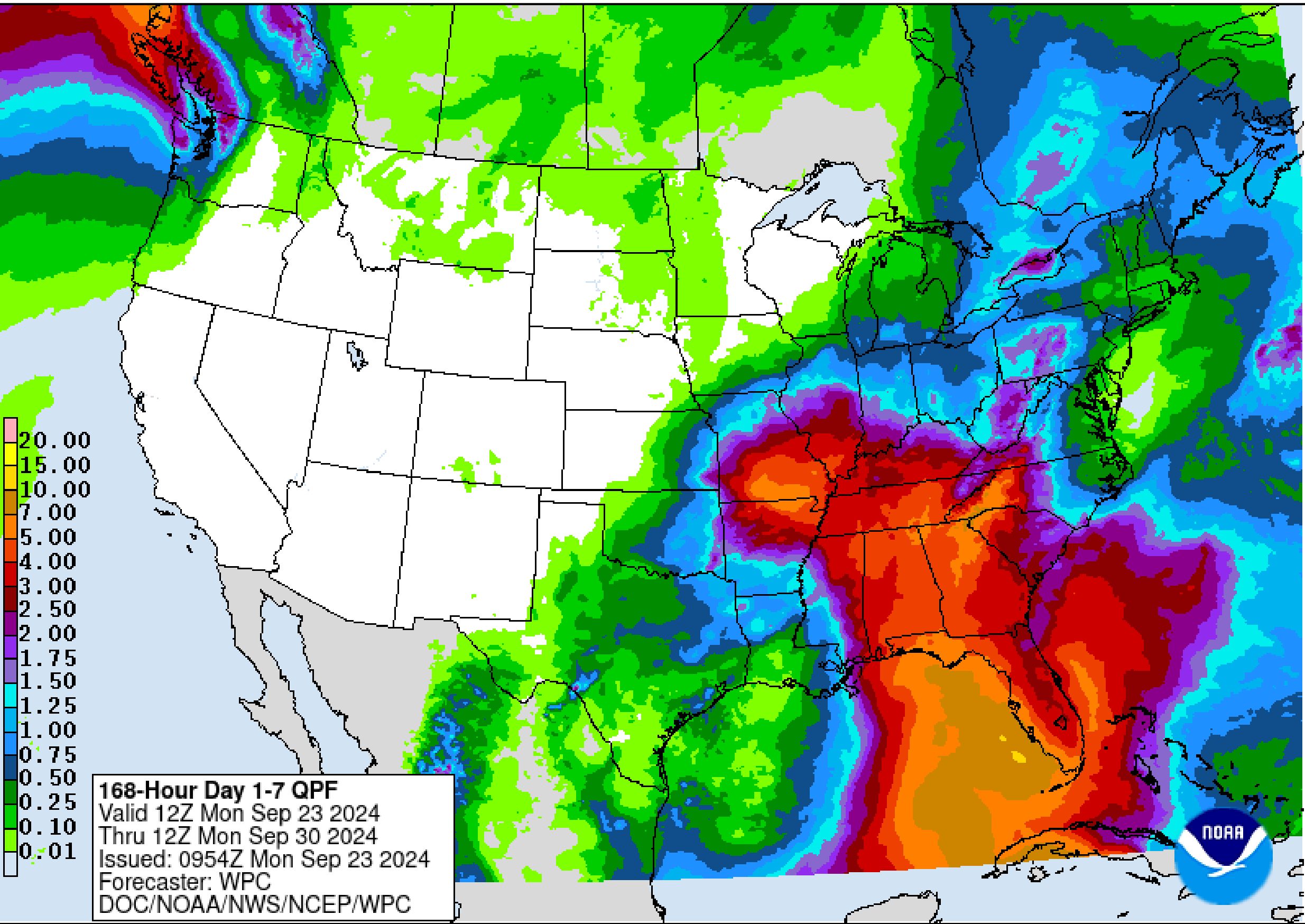
# Expected Storm Total Rainfall and Chance of Rainfall Flooding

Invest 97L

Images from NWS Weather Prediction Center



Tropical Analysis and Forecast Branch  
NWS National Hurricane Center

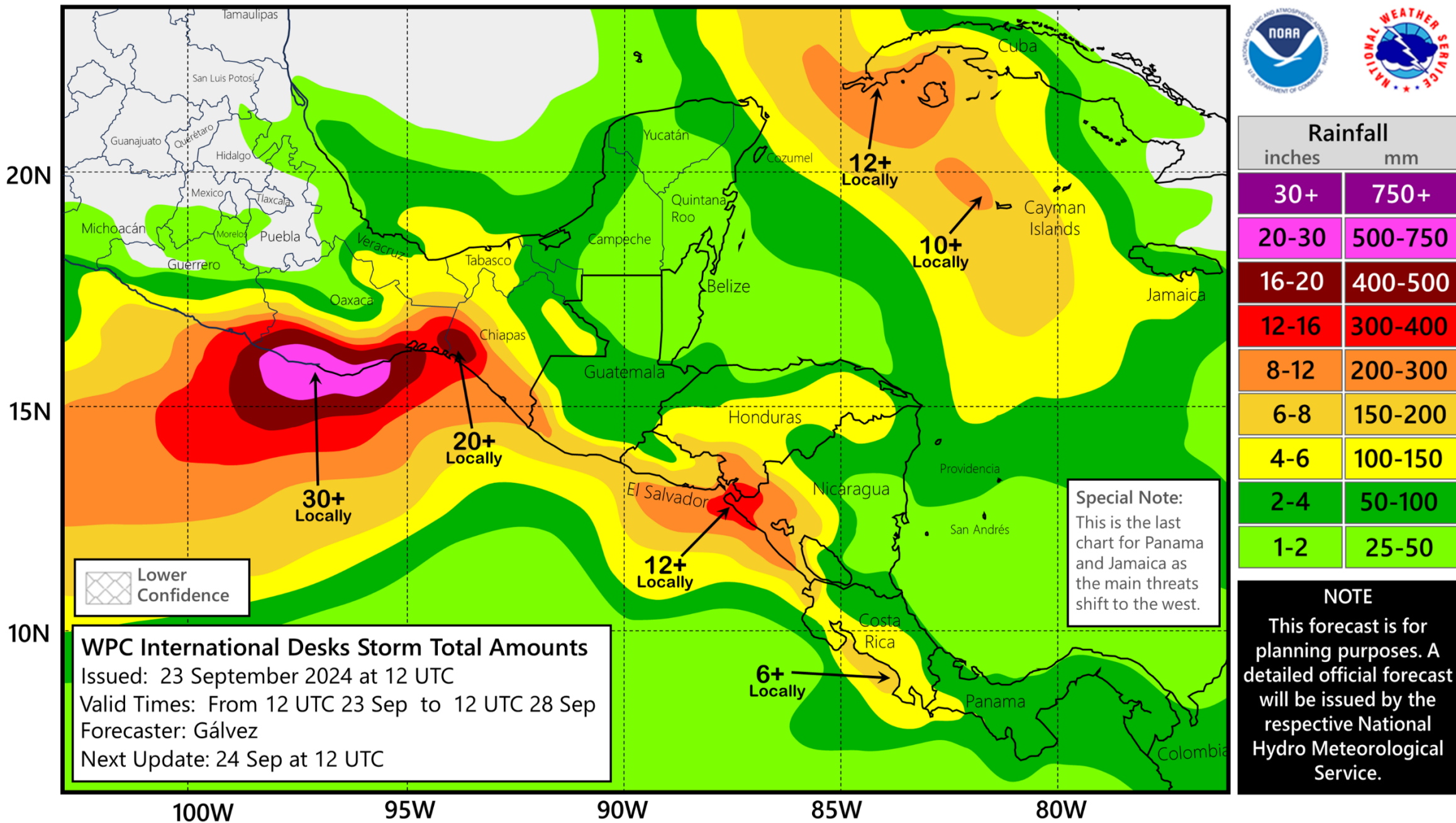


Risk of rainfall exceeding flash flood guidance within 25 miles of a point

**HIGH: > 50%**      **SLGT: 10%-20%**  
**MDT: 20%-50%**    **MRGL: 5%-10%**

Refer to map legend for Valid Time

## 5-Day Forecast Rainfall with a Central American Gyre



# Key Messages

Invest 97L



Tropical Analysis and Forecast Branch  
NWS National Hurricane Center

## **IMPACTS FOR D7**

**Winds/US Coast – Low**

**Winds/SRR – Low**

**Waves/US Coastal – Low**

**Waves/SRR – Low**

## **through next 5 days**

**US Storm Surge – Unknown**

**US Rainfall/Flash Flooding – Medium**

**US Tornadoes – Unknown**

- **Marine Key Messages:**
- Conditions will deteriorate beginning Tuesday over the southern Gulf of Mexico.
- As of now, peak winds are 35 kt while peak seas are 11 ft.
- Current forecast may change if advisories in relation to this system begin.

You can contact the Tropical  
Analysis and Forecast Branch at  
305-229-4424



## INVEST 97L BRIEFING

*The Next Briefing Will Be:  
Tuesday 8:30 AM EDT*

*You can always find get the latest graphics and information for this storm at [www.hurricanes.gov](http://www.hurricanes.gov)*



NHC\_TAFB

[www.nhc.noaa.gov](http://www.nhc.noaa.gov)