

**IMPACTS FOR D7** (through next 5 days)

Winds – **HIGH** (portions of FL coast & Bahamas)

Storm Surge – **LOW** (Bahamas **HIGH**)

Rainfall/Flash Flooding – **LOW** (Bahamas **MODERATE**)

Tornadoes – **LOW**

Waves - **HIGH**

# HURRICANE ISAIAS BRIEFING

4:00 PM EDT

Friday, July 31<sup>st</sup>, 2020

Prepared by:

Jeff Lewitsky

*Tropical Analysis and Forecast Branch  
NWS National Hurricane Center*



NHC\_TAFB

[www.nhc.noaa.gov](http://www.nhc.noaa.gov)

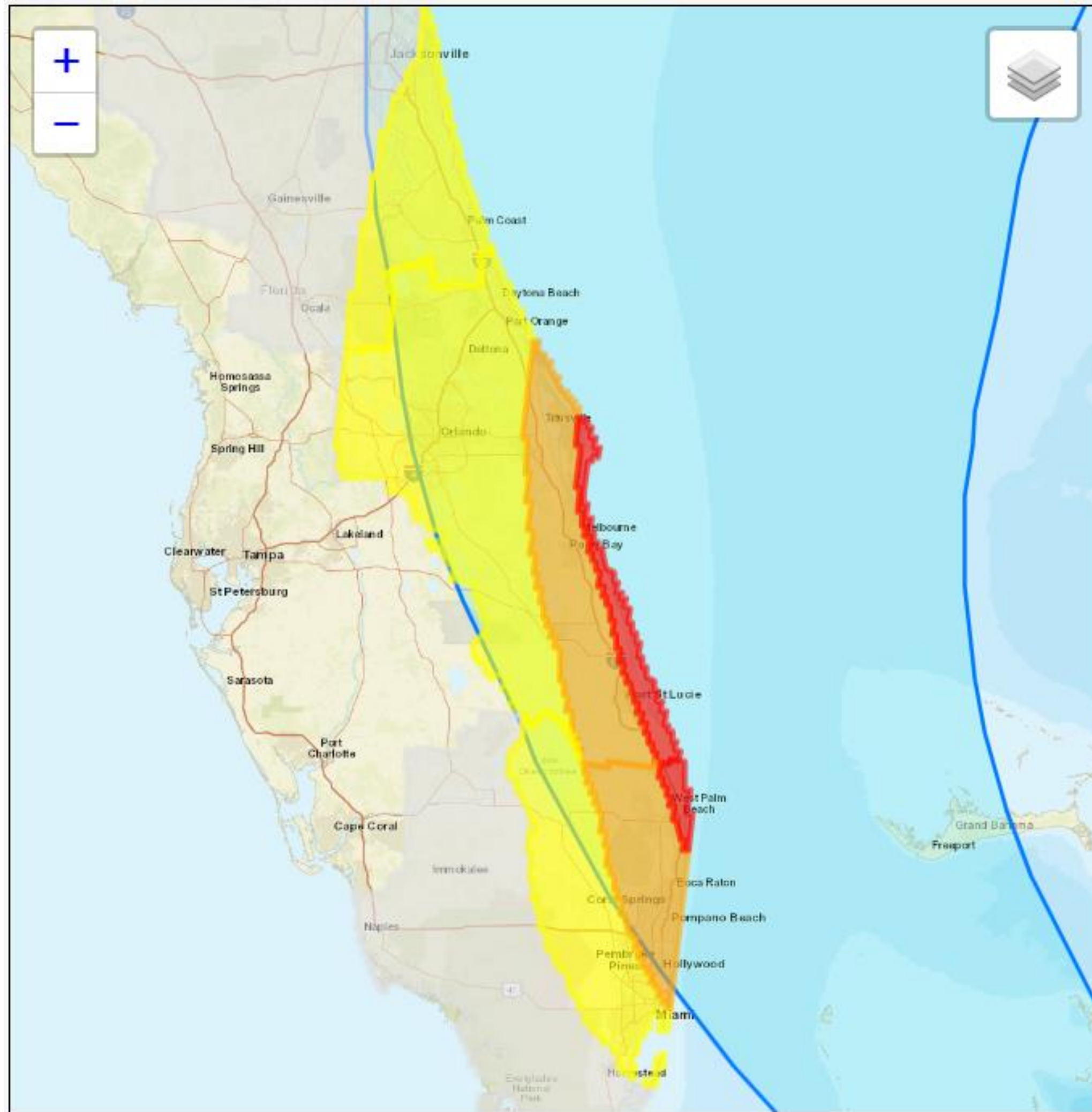


# Wind Impacts

## Hurricane Isaias



Tropical Analysis and Forecast Branch  
NWS National Hurricane Center



### Legend:

Wind Threat
Potential for wind greater than 110 mph
Potential for wind 74 to 110 mph
Potential for wind 58 to 73 mph
Potential for wind 39 to 57 mph
Wind less than 39 mph

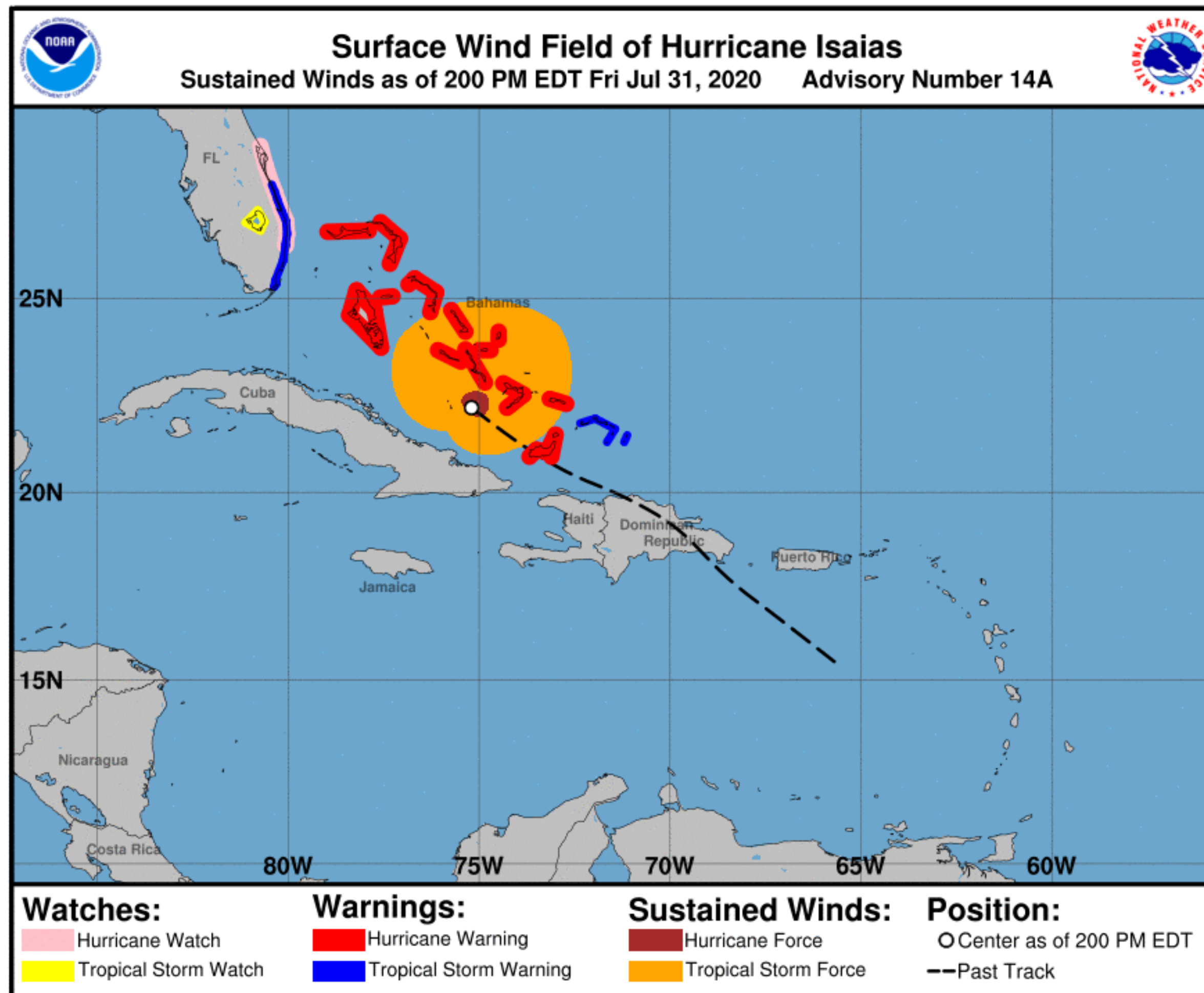


# Situation Overview

## Hurricane Isaias



Tropical Analysis and Forecast Branch  
NWS National Hurricane Center



...**Hurricane Conditions Expected in Warning Area...**

...**Hurricane Conditions Possible in Watch Area...**

Summary of **200 PM EDT** Information...

Location... 22.2N 75.5W

About... 245 miles SE of Nassau, Bahamas

Maximum Sustained Winds... 65 kt

Present Movement... NW 305 degrees at 14 kt

SIZE (in nautical miles)

64 KT..... 30NE 20SE 0SW 20NW.

50 KT..... 80NE 40SE 30SW 70NW.

34 KT..... 180NE 90SE 50SW 150NW.

12 FT SEAS..300NE 180SE 90SW 300NW.

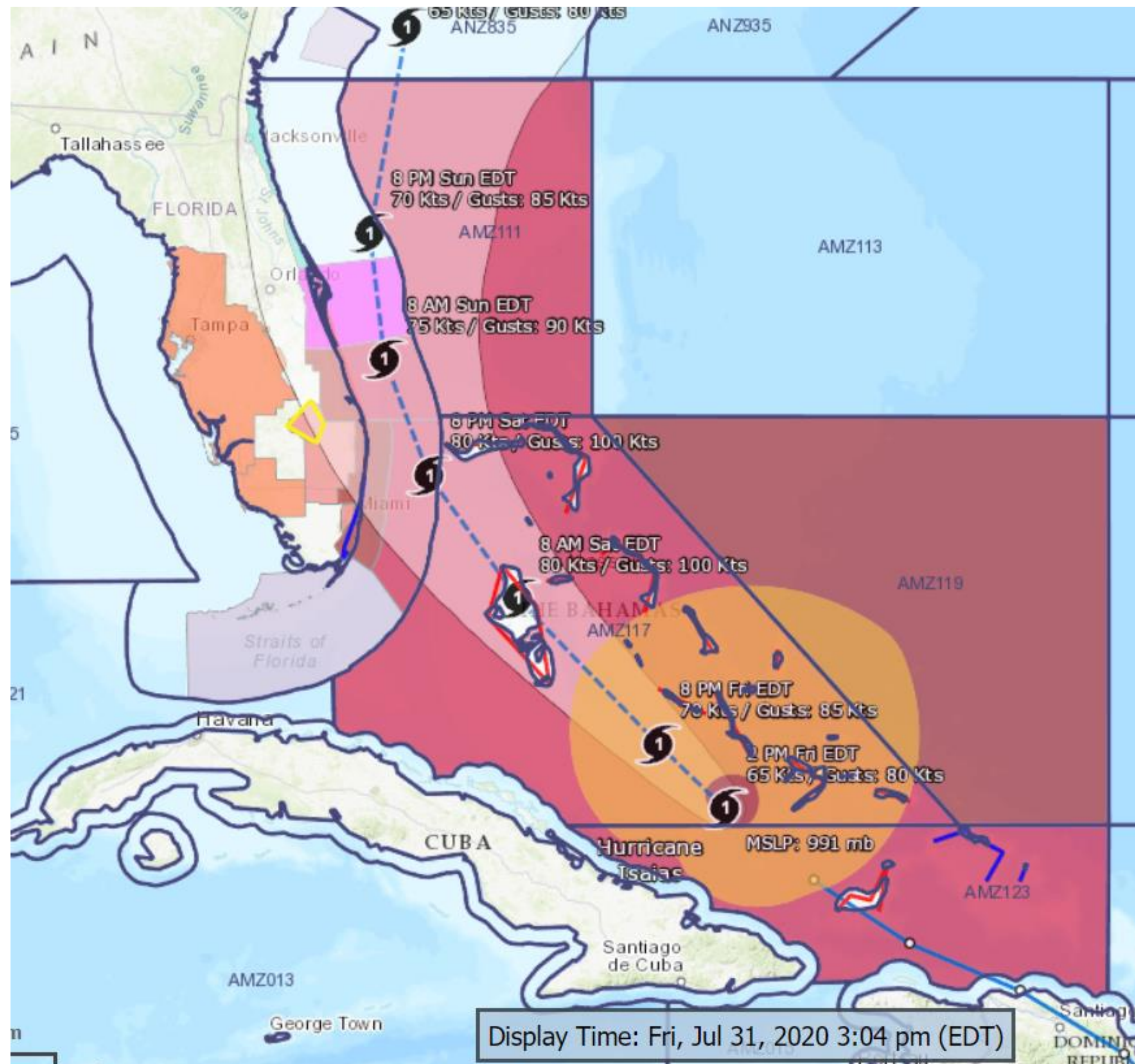


# Hazards Map

## Hurricane Isaias



Tropical Analysis and Forecast Branch  
NWS National Hurricane Center



### Legend:

- Hurricane Warning
- Tropical Storm Warning
- Hurricane Watch
- Tropical Storm Watch
- Gale Warning
- Small Craft Advisory
- Heat Advisory

■ <https://nowcoast.noaa.gov/>

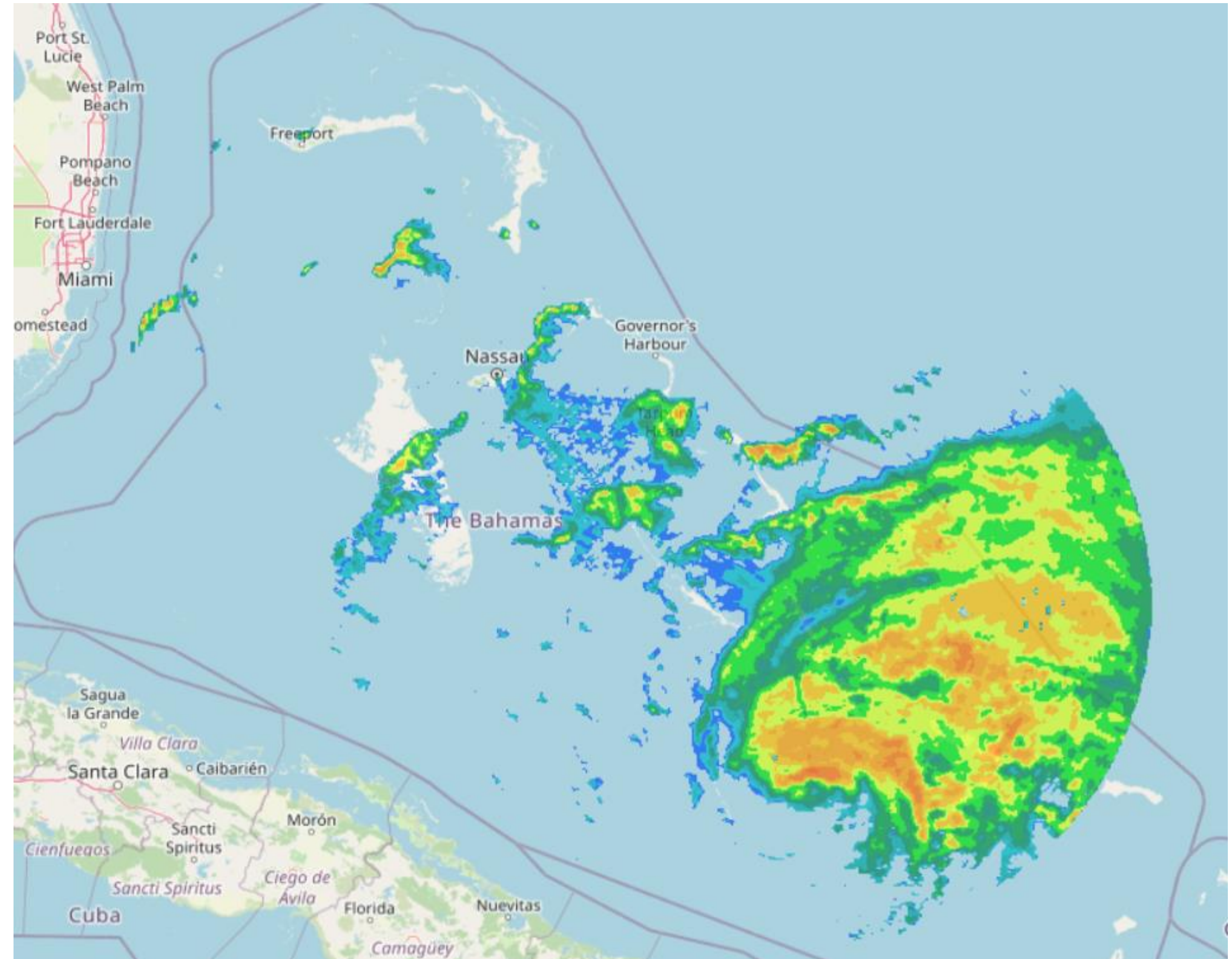
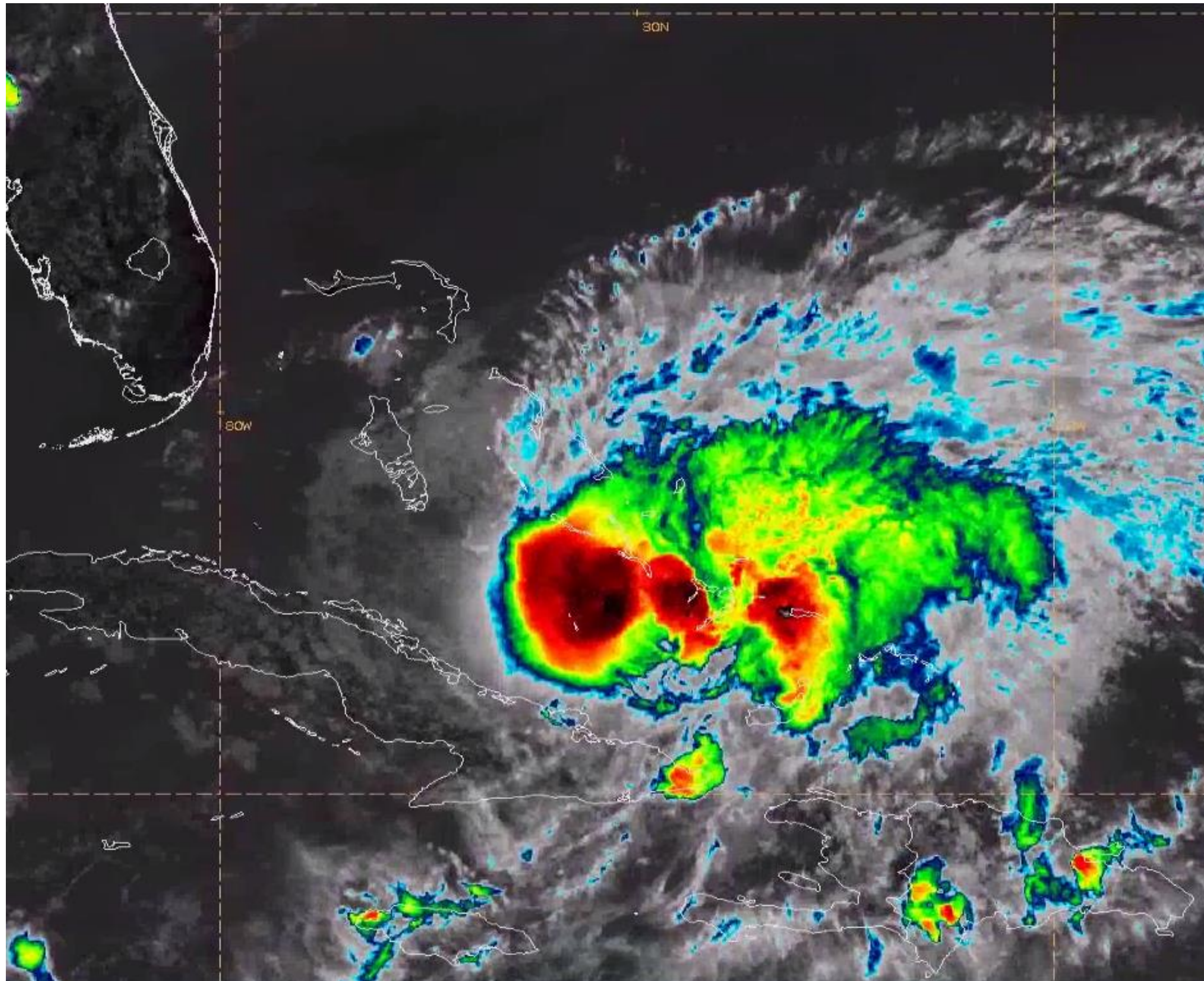


# Current Satellite and Radar

## Hurricane Isaias



Tropical Analysis and Forecast Branch  
NWS National Hurricane Center



- Isaias getting better organized.

- Heavy rain bands and squalls well out ahead of center.

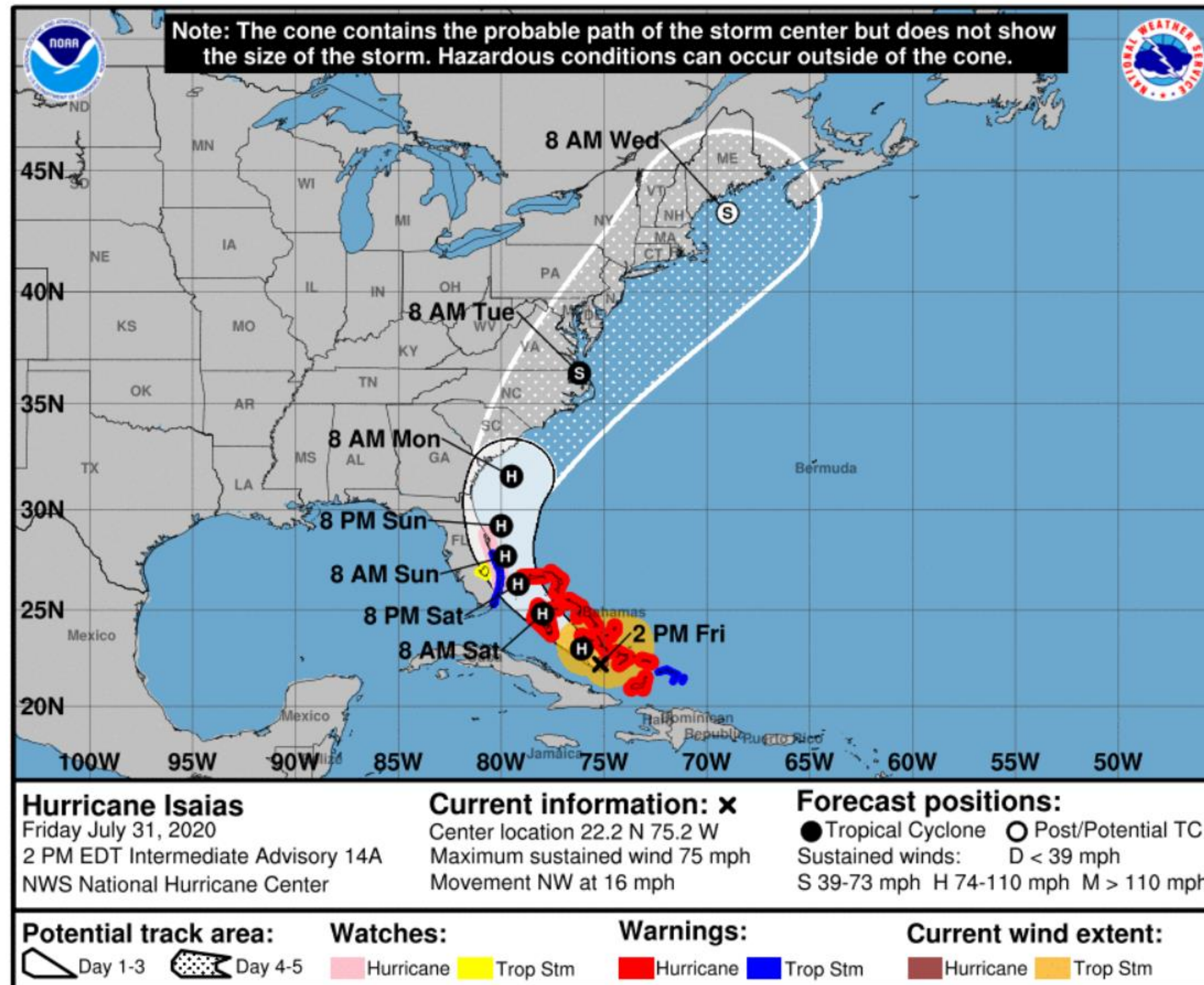


# Forecast Information

## Hurricane Isaias



Tropical Analysis and Forecast Branch  
NWS National Hurricane Center



**NOTE:** Do not focus on the exact track. Impacts can occur well outside the area enclosed by the cone.

- Isaias is expected to turn toward the north and slow its forward speed by Sunday, then recurve toward the north-northeast Monday and Tuesday
- The hurricane will continue to track over or near many of the Bahamian islands and the center will move close to or over the east central Florida coast
- After recurvature, Isaias is a threat to South Carolina and farther north along the U.S. mid-Atlantic and New England coasts
- Isaias should intensify some over the day or so before peaking in winds

\*\* Swaths are calculated using average track errors and actual track may be well inside, or possibly outside the potential track areas indicated.

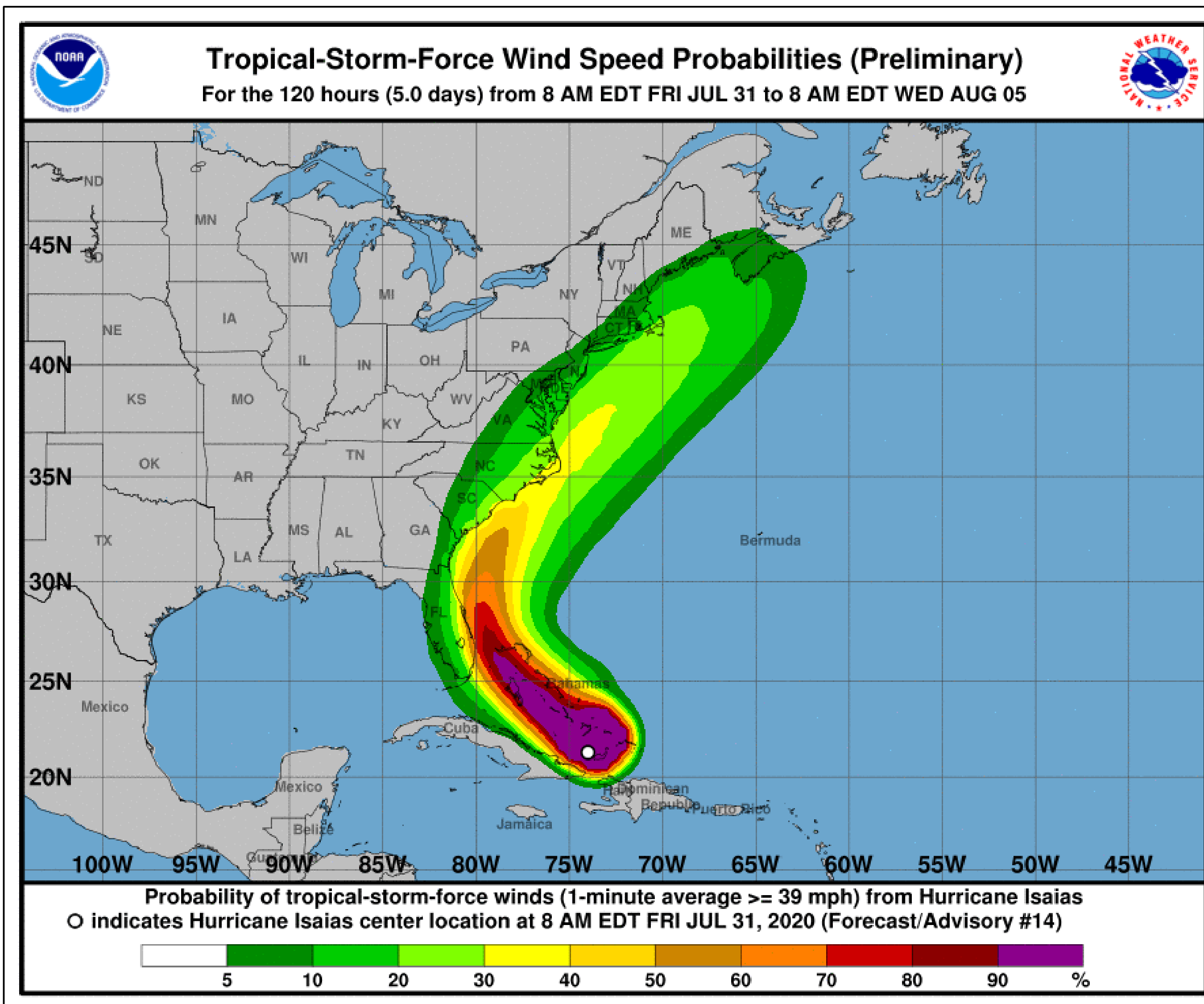


# T.S. Wind Speed Probabilities

## Hurricane Isaias



Tropical Analysis and Forecast Branch  
NWS National Hurricane Center



- **Miami – 35%**
  - **Fort Lauderdale – 50%**
  - **Palm Beach – 70%**
  - **Cape Canaveral – 55%**
  - **Jacksonville – 20%**
  - **Savannah – 20%**
  - **Charleston – 30%**
- Probabilities of sustained tropical storm force winds (34 kt to 63 kt) over the next 5 days, based off this cyclone's wind radii and track.
  - Clear or dark green are the lowest chances of 0-30%.
  - Yellow to orange is 31-70%
  - Red through purple are the highest probabilities of 71%-100%
  - See the color bar below the image for more details.



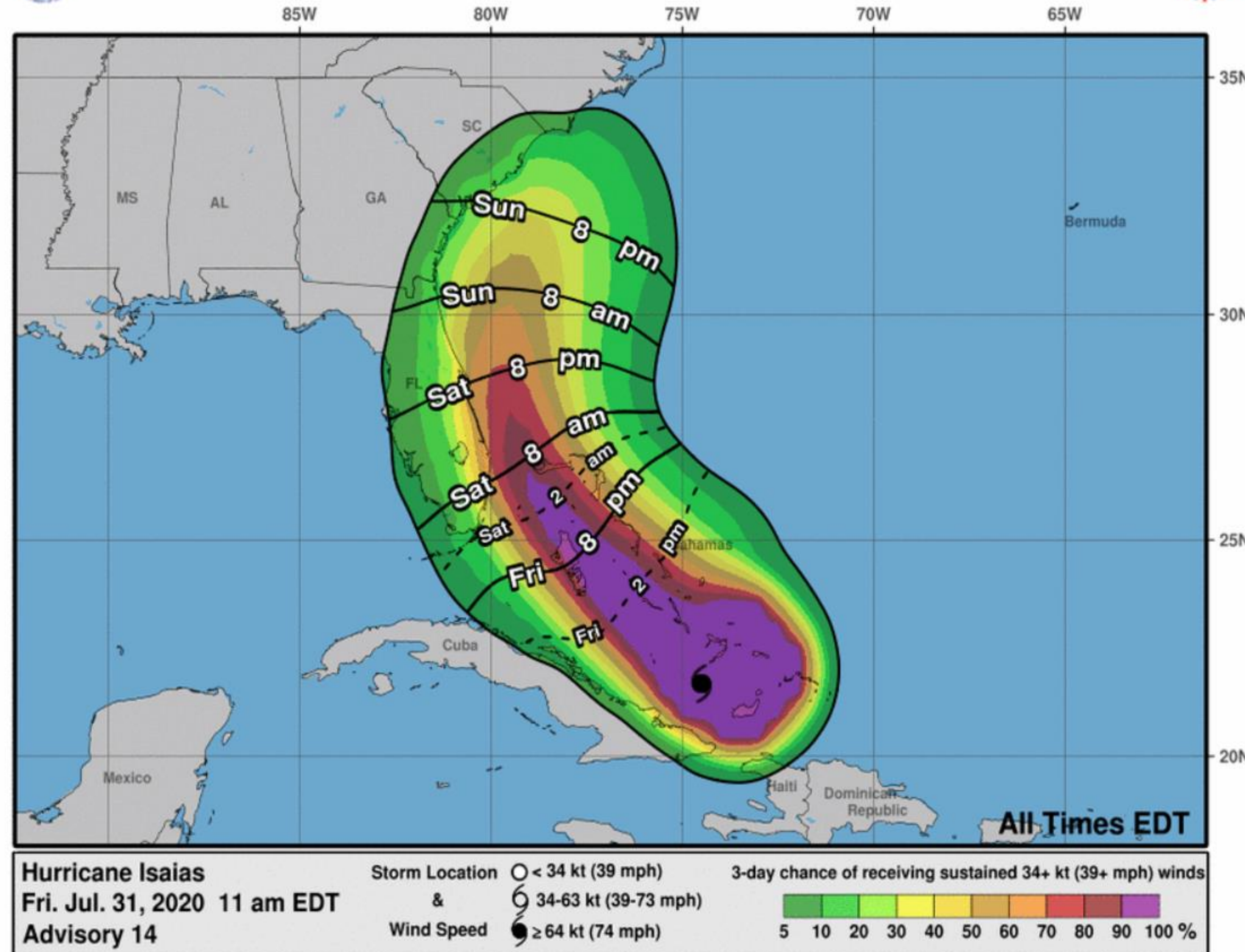
# Earliest Reasonable Time of Arrival

Hurricane Isaias



Tropical Analysis and Forecast Branch  
NWS National Hurricane Center

## 0-3 Day Earliest Reasonable Arrival Time of Tropical-Storm-Force Winds



- **Miami/Fort Lauderdale – Saturday AM**
  - **Cape Canaveral – Saturday PM**
  - **Georgia – Sunday AM**
  - **South Carolina – Sunday PM**
- The earliest reasonable time of arrival of Tropical Storm Force Winds (34kt to 63 kt) for this cyclone based off the current track and wind radii.
  - Clear or dark green are the lowest chances of 0-30%.
  - Yellow to orange is 31-70%
  - Red through purple are the highest probabilities of 71%-100%
  - See the color bar below the image for more details.

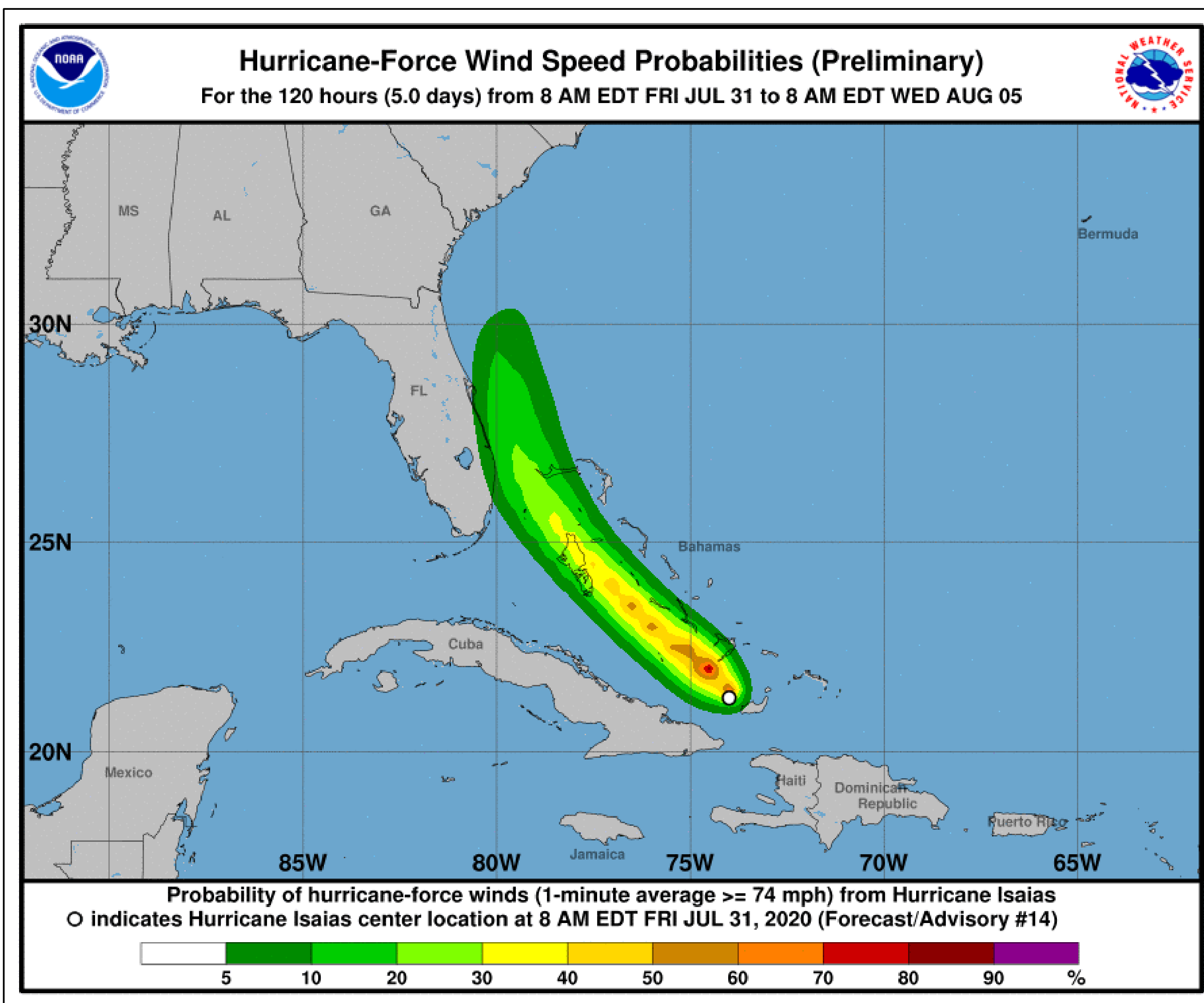


# Hurricane Wind Speed Probabilities

## Hurricane Isaias



Tropical Analysis and Forecast Branch  
NWS National Hurricane Center



- **Miami/Fort Lauderdale – 0-5%**
- **Palm Beach – 10%**
- **Fort Pierce/Cape Canaveral – 5-10%**
- Probabilities of sustained hurricane force winds (64 kt +) over the next 5 days, based off this cyclone's wind radii and track.
- Clear or dark green are the lowest chances of 0-30%.
- Yellow to orange is 31-70%
- Red through purple are the highest probabilities of 71%-100%
- See the color bar below the image for more details.

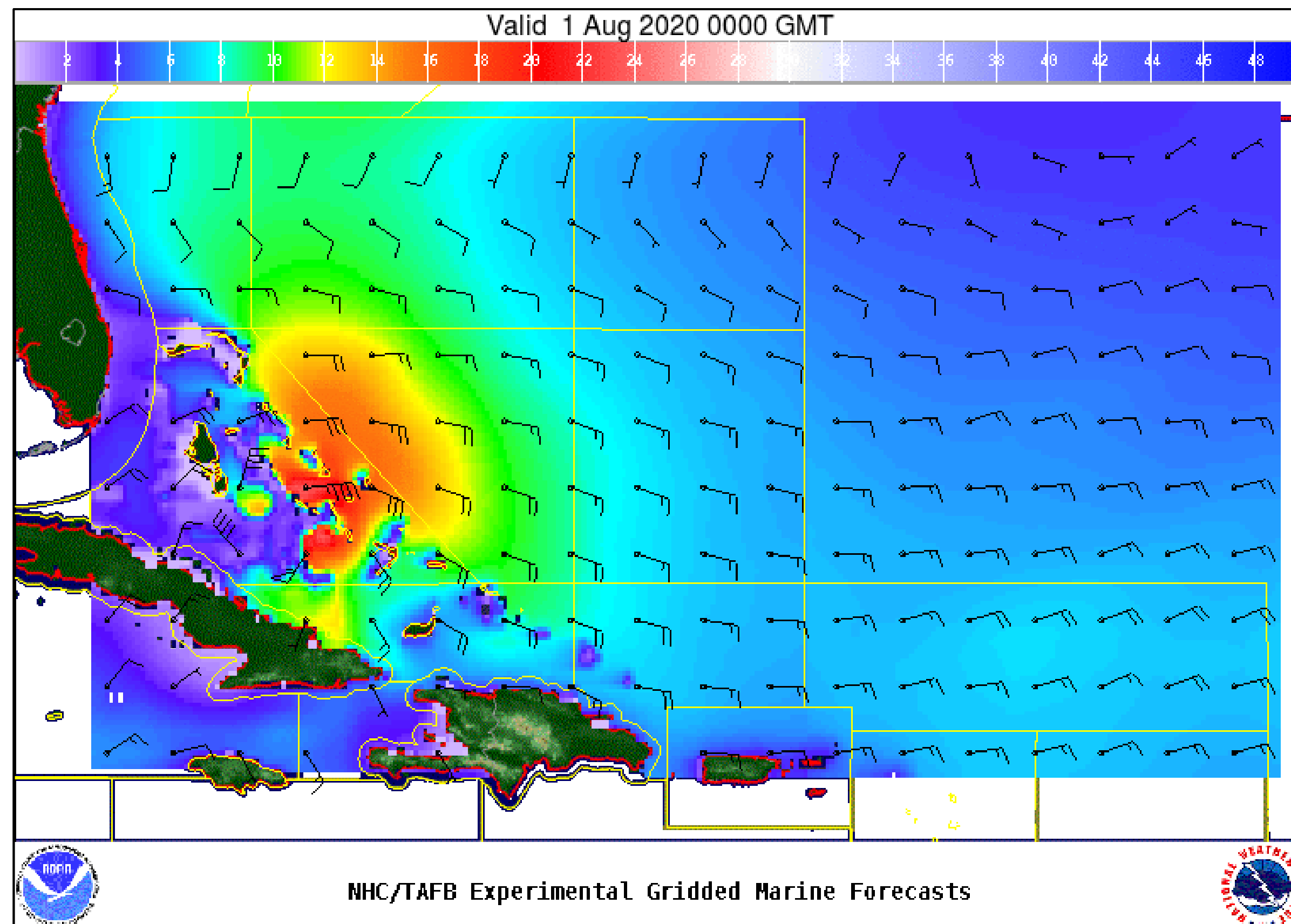


# Wind And Waves

## Hurricane Isaias



Tropical Analysis and Forecast Branch  
NWS National Hurricane Center



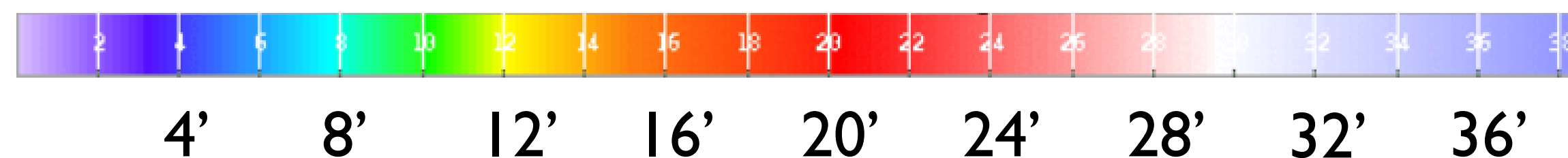
06 Hour Forecast

**8 PM EDT, Friday, July 31<sup>st</sup>, 2020**

Peak Winds: 70 KT

Peak Seas: 26 FT

- Wave heights are in feet



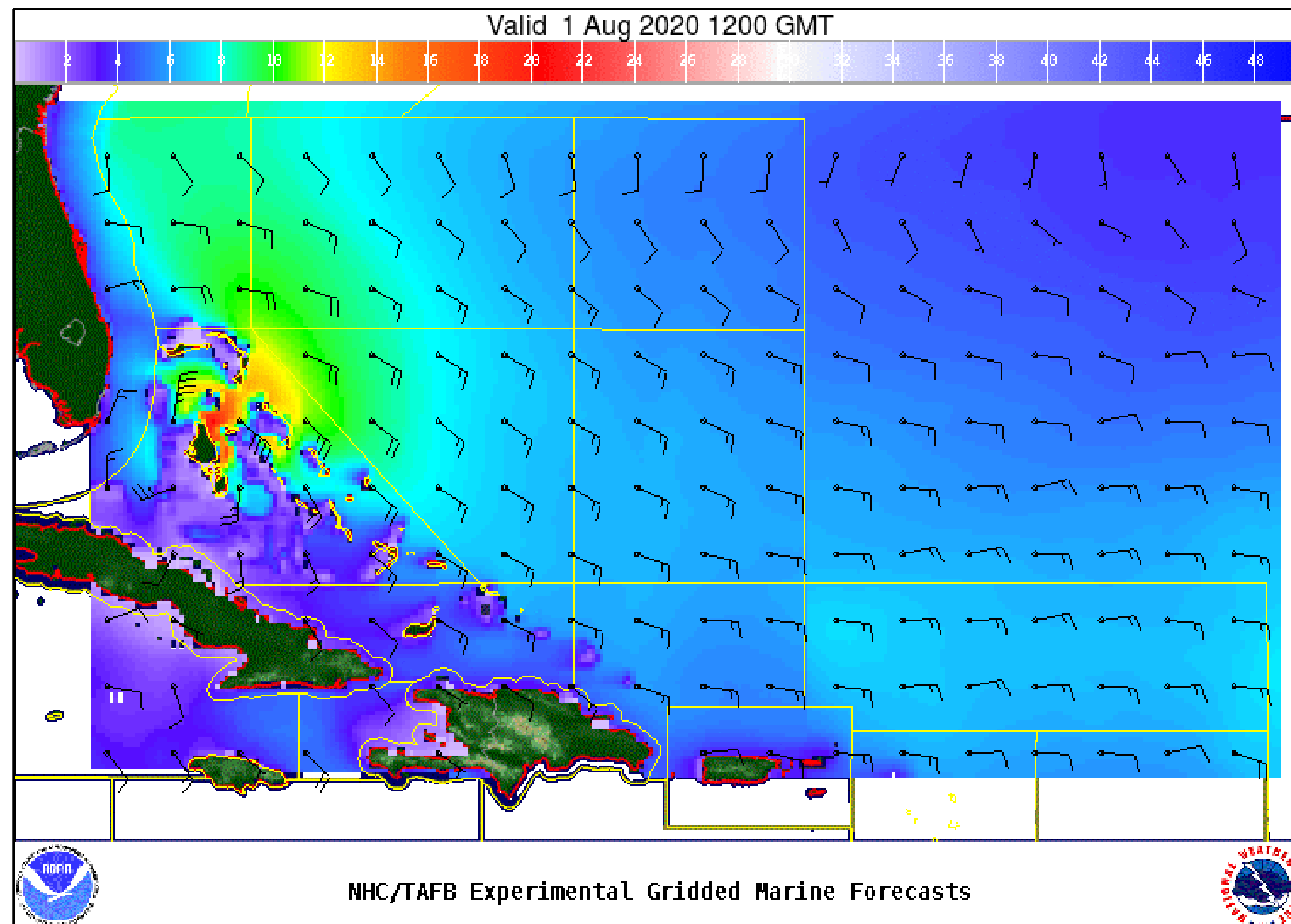


# Wind And Waves

## Hurricane Isaias



Tropical Analysis and Forecast Branch  
NWS National Hurricane Center



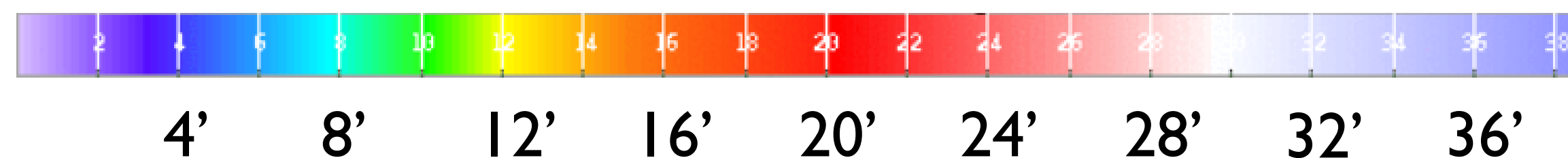
24 Hour Forecast

**8 AM EDT Saturday, August 1<sup>st</sup>, 2020**

Peak Winds: 80 KT

Peak Seas: 19 FT

- Wave heights are in feet



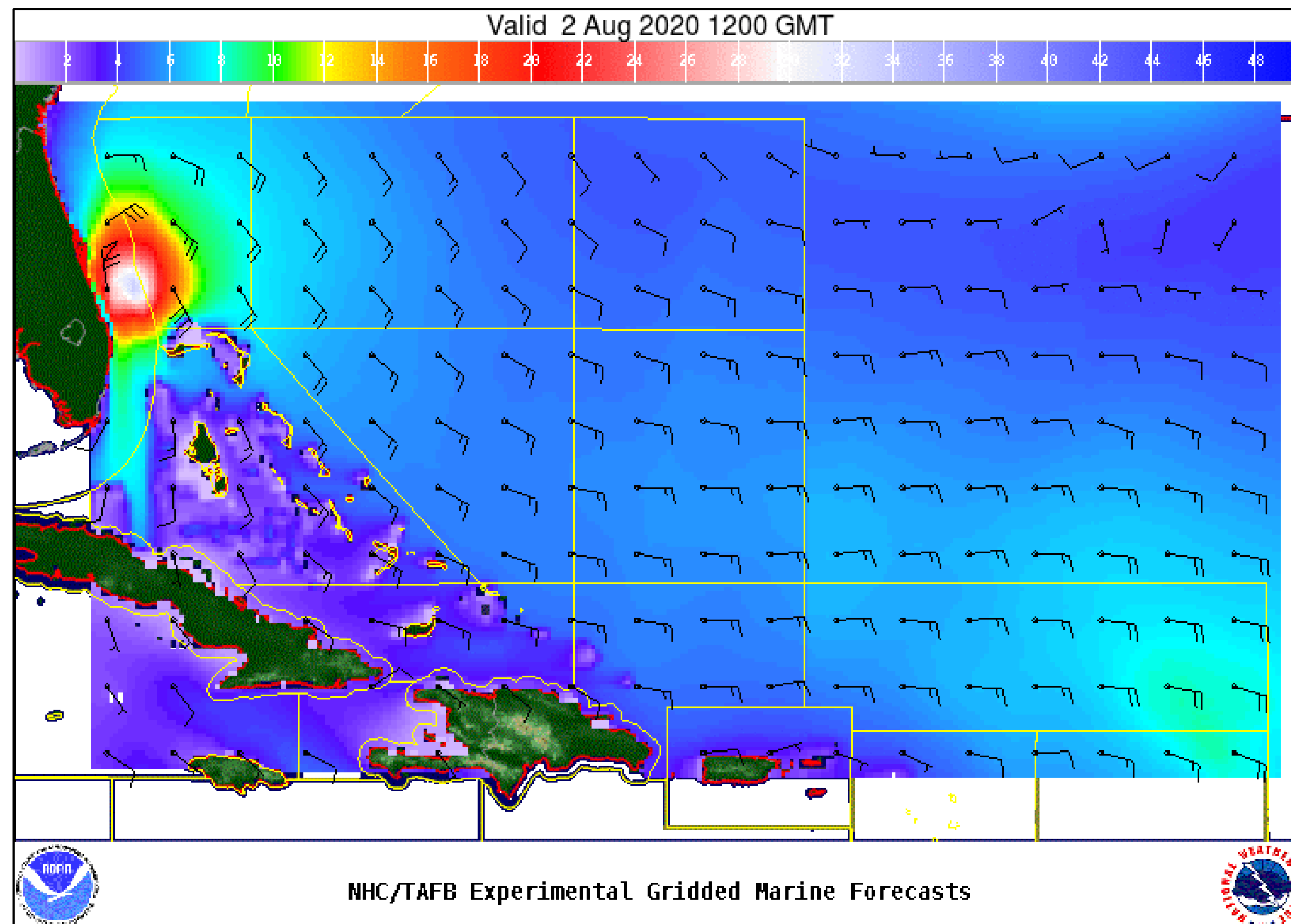


# Wind And Waves

## Hurricane Isaias



Tropical Analysis and Forecast Branch  
NWS National Hurricane Center



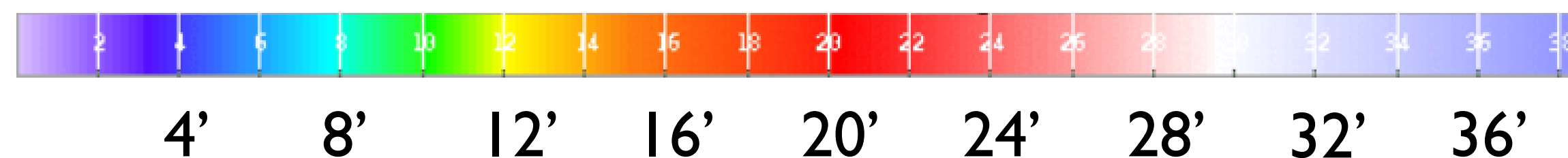
48 Hour Forecast

**8 AM EDT Sunday, August 2<sup>nd</sup>, 2020**

Peak Winds: 75 KT

Peak Seas: 26 FT

- Wave heights are in feet



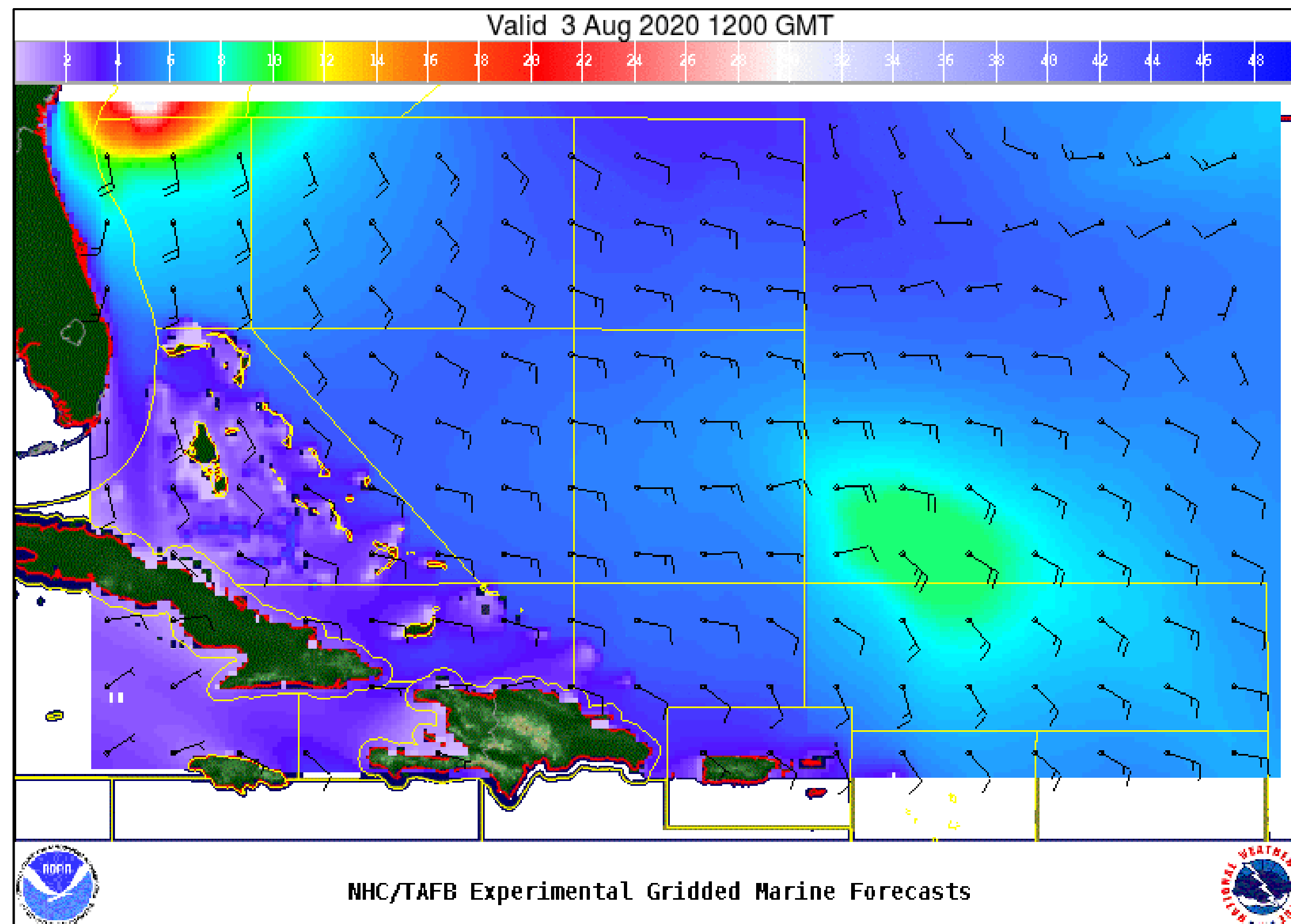


# Wind And Waves

## Hurricane Isaias



Tropical Analysis and Forecast Branch  
NWS National Hurricane Center



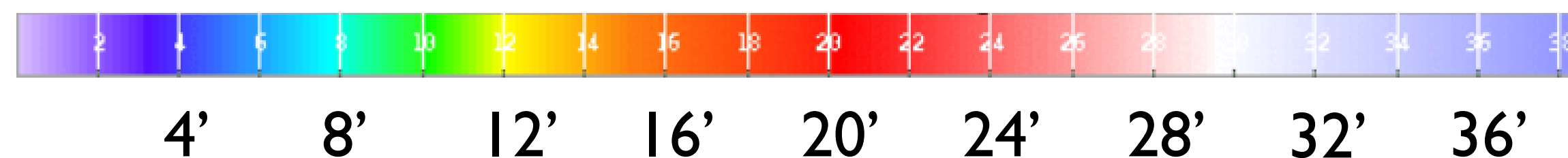
72 Hour Forecast

**8 AM EDT Monday, August 3<sup>rd</sup>, 2020**

Peak Winds: 65 KT

Peak Seas: 28 FT

- Wave heights are in feet



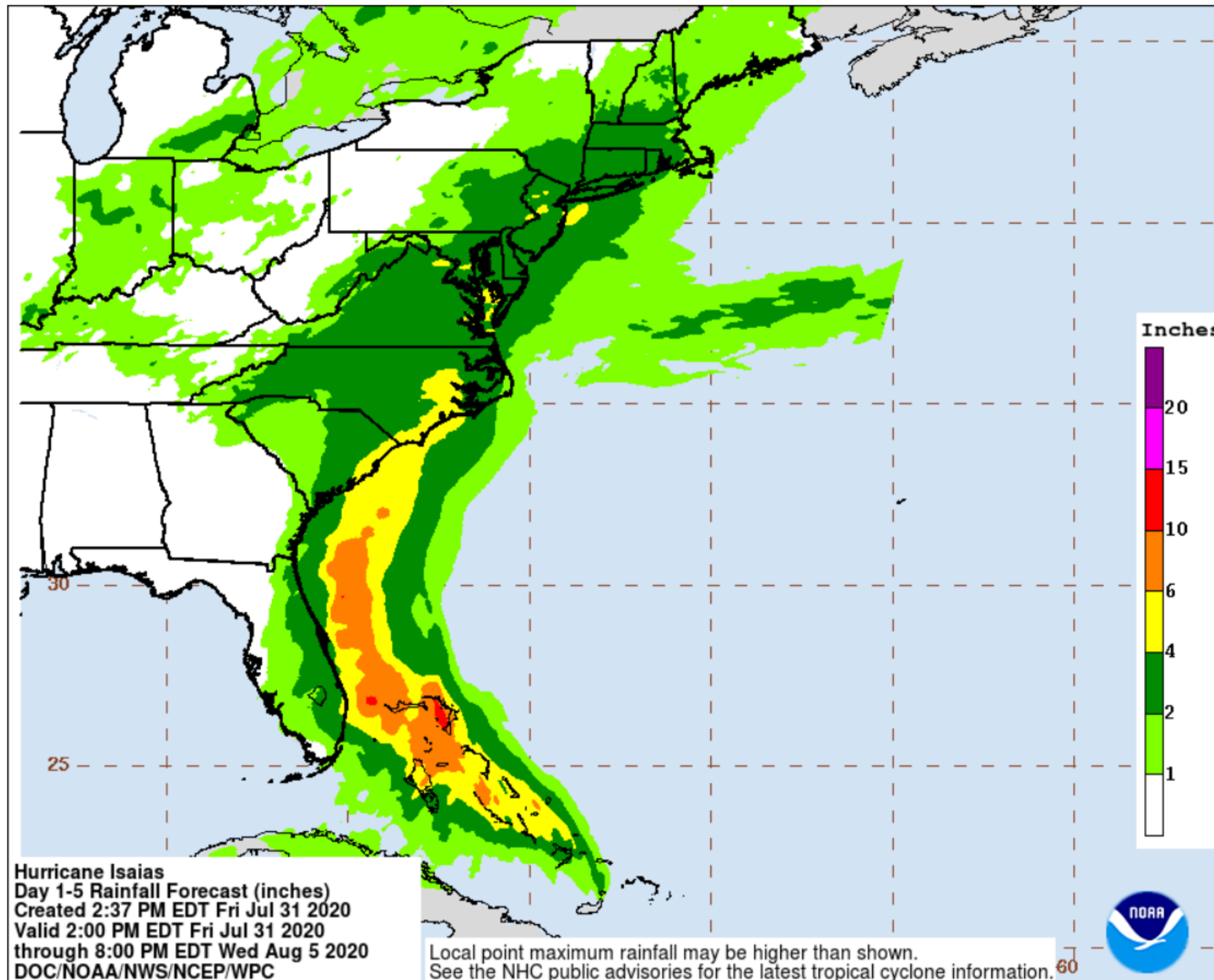


# Expected Storm Total Rainfall

Hurricane Isaias



Tropical Analysis and Forecast Branch  
NWS National Hurricane Center



- **Total rainfall in inches through:  
8 PM EDT Wednesday, August 5<sup>th</sup>**





# Key Messages

## Hurricane Isaias



Tropical Analysis and Forecast Branch  
NWS National Hurricane Center



### Key Messages for Hurricane Isaias

Advisory 14: 11:00 AM EDT Fri Jul 31, 2020

- Isaias will produce heavy rains and potentially life-threatening flash flooding and mudslides across the Dominican Republic, northern Haiti, Turks and Caicos, and the Bahamas. Heavy rains associated with Isaias may begin to affect south and east-central Florida late Friday night, and the eastern Carolinas by early next week, potentially resulting in isolated flash and urban flooding, especially in low-lying and poorly drained areas. Isolated minor river flooding is possible in the Carolinas early next week.
- Hurricane conditions and dangerous storm surge are expected in portions of the Bahamas today and Saturday, and Hurricane Warnings are in effect. Preparations to protect life and property should be rushed to completion.
- Tropical storm conditions are expected with hurricane conditions possible along portions of the Florida east coast beginning Saturday, and a Tropical Storm Warning and Hurricane Watch are in effect. Storm surge watches or warnings could be needed for part of this area this afternoon.
- There is a risk of impacts from winds, heavy rainfall, and storm surge beginning late this weekend along the northeastern Florida coast and spreading northward along the remainder of the U.S. east coast through early next week. Interests along the entire U.S. east coast should monitor the progress of Isaias and updates to the forecast.

For more information go to [hurricanes.gov](https://hurricanes.gov)

## Marine Key Messages:

- Seas currently peaking near 26 FT
- Seas 20-26 FT as Isaias makes it's closest approach to Florida



**IMPACTS FOR D7 (through next 5 days)**

**Winds – HIGH** (portions of FL coast & Bahamas)

**Storm Surge – LOW** (Bahamas **HIGH**)

**Rainfall/Flash Flooding – LOW** (Bahamas **MODERATE**)

**Tornadoes – LOW**

**Waves - HIGH**



# HURRICANE ISAIAS BRIEFING

You can contact the Tropical Analysis and Forecast Branch at  
305-229-4424

*The Next Briefing Will Be:  
Saturday 8:15 AM EDT*

*You can always find get the latest graphics and information for this storm at [www.hurricanes.gov](http://www.hurricanes.gov)*



NHC\_TAFB

[www.nhc.noaa.gov](http://www.nhc.noaa.gov)