

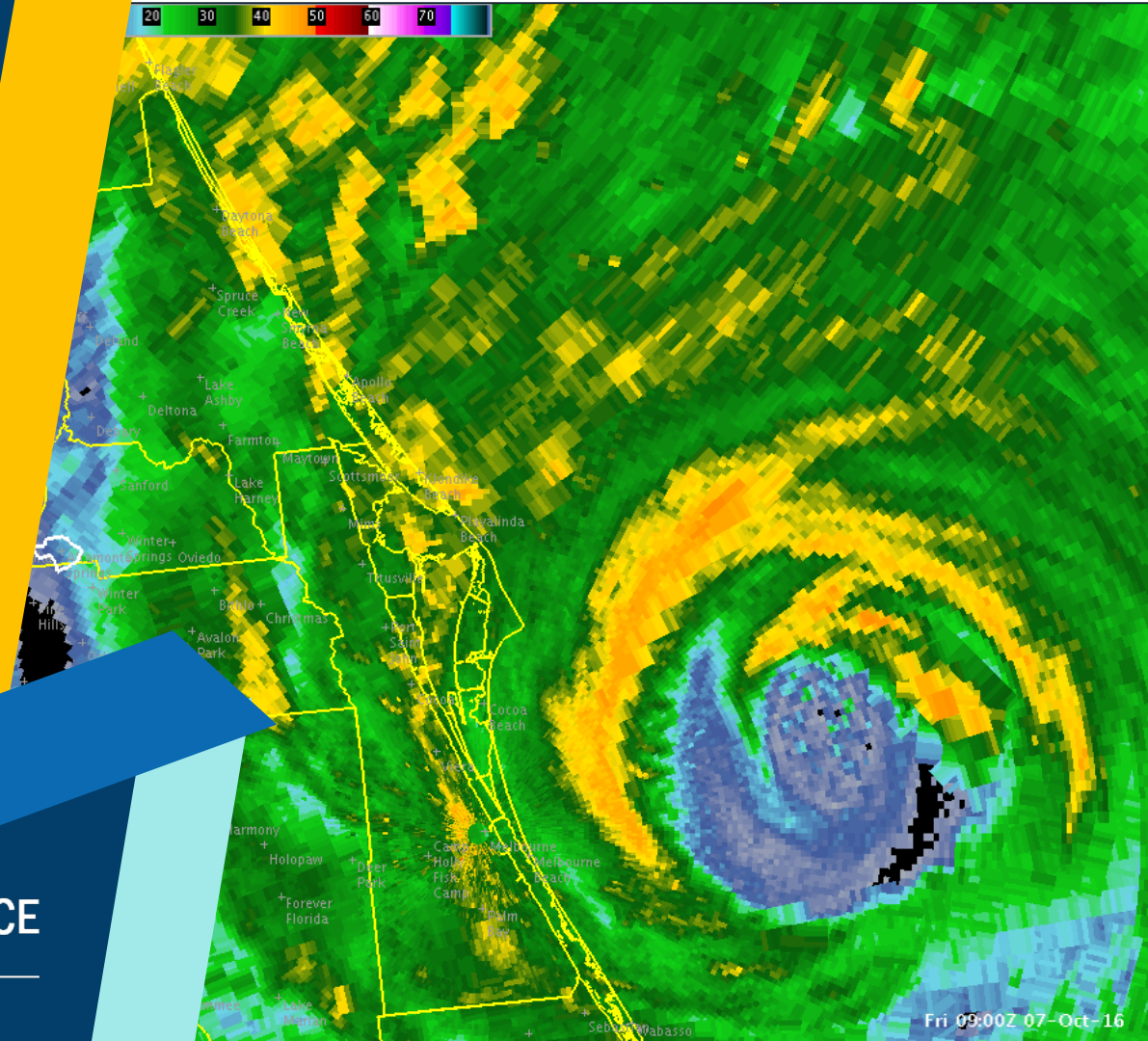
Local NWS Tropical Products & Impacts-Based Decision Support Services

Will Ulrich
Warning Coordination
Meteorologist
NWS Melbourne

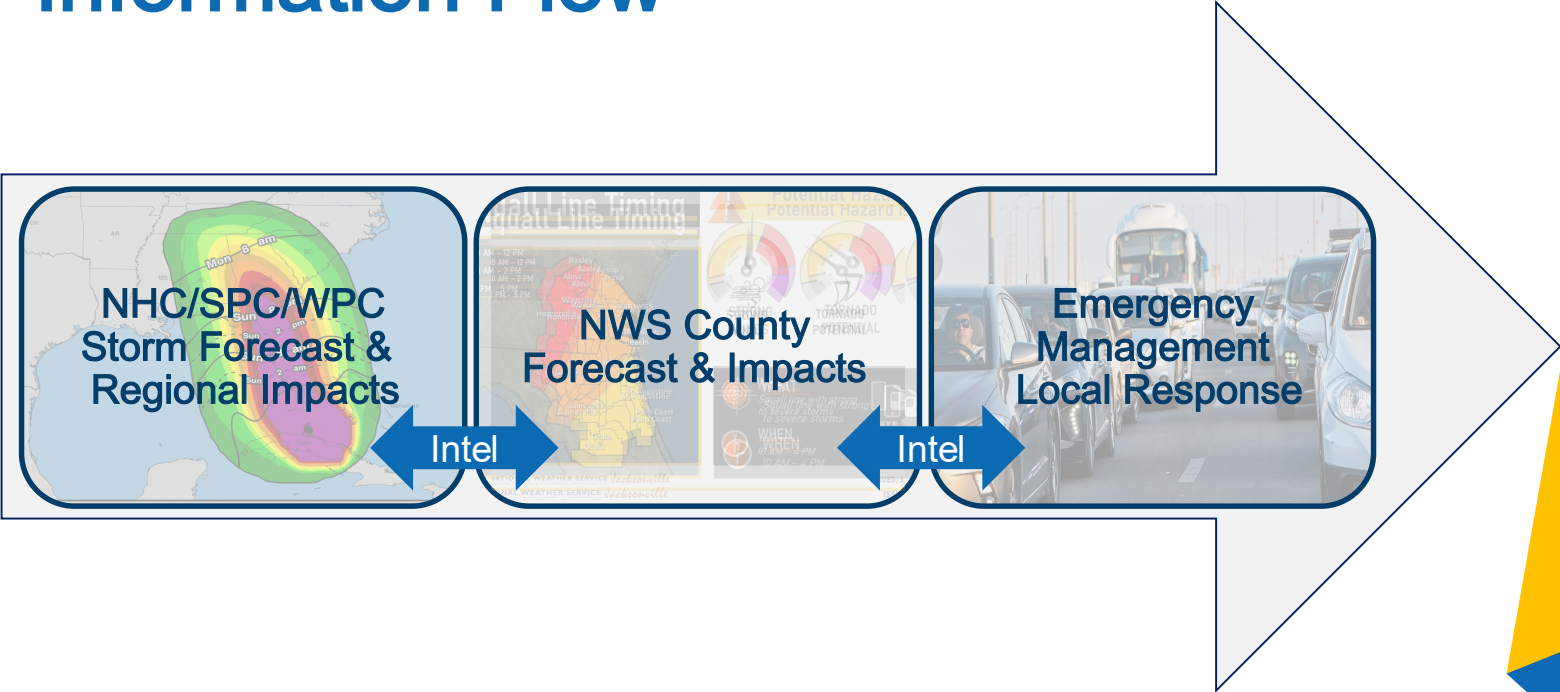


WEATHER FORECAST OFFICE

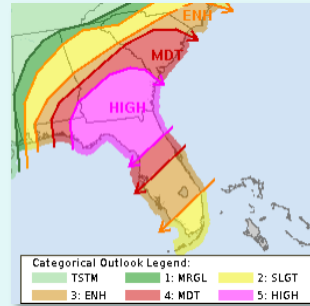
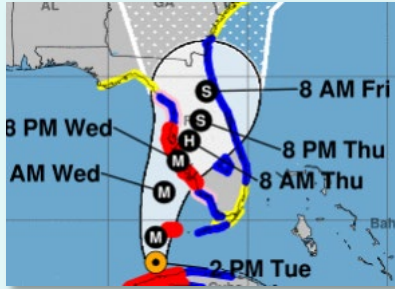
Melbourne  Florida



Information Flow



National Centers



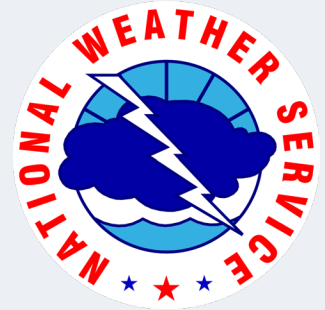
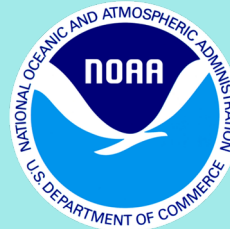
National Hurricane Center



Storm Prediction Center



Weather Prediction Center



Daily Local NWS Weather Intel - Routine

Melbourne, FL

Click for Text Forecast
JAX Forecast Discussion
3 miles E of Melbourne, FL

Weekly Summary

	Tue	Wed	Thu	Fri	Sat	Sun	Mon
Max Temp, °F	74	70	80	73	65	73	72
Max Heat Index, °F	74	70	81	73	65	73	72
Min Temp, °F	63	53	54	48	48	52	54
Min Wind Chill, °F	58	53	54	53	48	52	56
Max Wind, mph	12	7	18	14	6	15	13
Min Wind, mph	6	2	6	6	7	8	9
Max Wind Gust, mph	17	10	28	21	13	23	20
Max Cloud Cover, %	23	45	84	77	91	99	88
Min Cloud Cover, %	11	29	49	23	58	74	35
Max Prob. of Precip, %	0	0	3	3	90	51	30
Max RH, %	83	100	100	100	77	100	100
Min RH, %	30	54	54	35	41	66	61
Max Dew Point, °F	63	60	85	60	48	81	59
Min Dew Point, °F	41	53	53	41	36	49	55

Melbourne, FL

Click for Text Forecast
JAX Forecast Discussion
3 miles E of Melbourne, FL

Weekly Summary

	Tue	Wed	Thu	Fri	Sat	Sun	Mon
Max Temp, °F	74	70	80	73	65	73	72
Max Heat Index, °F	74	70	81	73	65	73	72
Min Temp, °F	63	53	54	48	48	52	54
Min Wind Chill, °F	58	53	54	53	48	52	56
Max Wind, mph	12	7	18	14	6	15	13
Min Wind, mph	6	2	6	6	7	8	9
Max Wind Gust, mph	17	10	28	21	13	23	20
Max Cloud Cover, %	23	45	84	77	91	99	88
Min Cloud Cover, %	11	29	49	23	58	74	35
Max Prob. of Precip, %	0	0	3	3	90	51	30
Max RH, %	83	100	100	100	77	100	100
Min RH, %	30	54	54	35	41	66	61
Max Dew Point, °F	63	60	85	60	48	81	59
Min Dew Point, °F	41	53	53	41	36	49	55

Melbourne, FL

Click for Text Forecast
JAX Forecast Discussion
3 miles E of Melbourne, FL

Weekly Summary

	Tue	Wed	Thu	Fri	Sat	Sun	Mon
Max Temp, °F	74	70	80	73	65	73	72
Max Heat Index, °F	74	70	81	73	65	73	72
Min Temp, °F	63	53	54	48	48	52	54
Min Wind Chill, °F	58	53	54	53	48	52	56
Max Wind, mph	12	7	18	14	6	15	13
Min Wind, mph	6	2	6	6	7	8	9
Max Wind Gust, mph	17	10	28	21	13	23	20
Max Cloud Cover, %	23	45	84	77	91	99	88
Min Cloud Cover, %	11	29	49	23	58	74	35
Max Prob. of Precip, %	0	0	3	3	90	51	30
Max RH, %	83	100	100	100	77	100	100
Min RH, %	30	54	54	35	41	66	61
Max Dew Point, °F	63	60	85	60	48	81	59
Min Dew Point, °F	41	53	53	41	36	49	55

Melbourne, FL

Click for Text Forecast
JAX Forecast Discussion
3 miles E of Melbourne, FL

Weekly Summary

	Tue	Wed	Thu	Fri	Sat	Sun	Mon
Max Temp, °F	74	70	80	73	65	73	72
Max Heat Index, °F	74	70	81	73	65	73	72
Min Temp, °F	63	53	54	48	48	52	54
Min Wind Chill, °F	58	53	54	53	48	52	56
Max Wind, mph	12	7	18	14	6	15	13
Min Wind, mph	6	2	6	6	7	8	9
Max Wind Gust, mph	17	10	28	21	13	23	20
Max Cloud Cover, %	23	45	84	77	91	99	88
Min Cloud Cover, %	11	29	49	23	58	74	35
Max Prob. of Precip, %	0	0	3	3	90	51	30
Max RH, %	83	100	100	100	77	100	100
Min RH, %	30	54	54	35	41	66	61
Max Dew Point, °F	63	60	85	60	48	81	59
Min Dew Point, °F	41	53	53	41	36	49	55

Melbourne, FL

Click for Text Forecast
JAX Forecast Discussion
3 miles E of Melbourne, FL

Weekly Summary

	Tue	Wed	Thu	Fri	Sat	Sun	Mon
Max Temp, °F	74	70	80	73	65	73	72
Max Heat Index, °F	74	70	81	73	65	73	72
Min Temp, °F	63	53	54	48	48	52	54
Min Wind Chill, °F	58	53	54	53	48	52	56
Max Wind, mph	12	7	18	14	6	15	13
Min Wind, mph	6	2	6	6	7	8	9
Max Wind Gust, mph	17	10	28	21	13	23	20
Max Cloud Cover, %	23	45	84	77	91	99	88
Min Cloud Cover, %	11	29	49	23	58	74	35
Max Prob. of Precip, %	0	0	3	3	90	51	30
Max RH, %	83	100	100	100	77	100	100
Min RH, %	30	54	54	35	41	66	61
Max Dew Point, °F	63	60	85	60	48	81	59
Min Dew Point, °F	41	53	53	41	36	49	55

Site Specific Forecasts

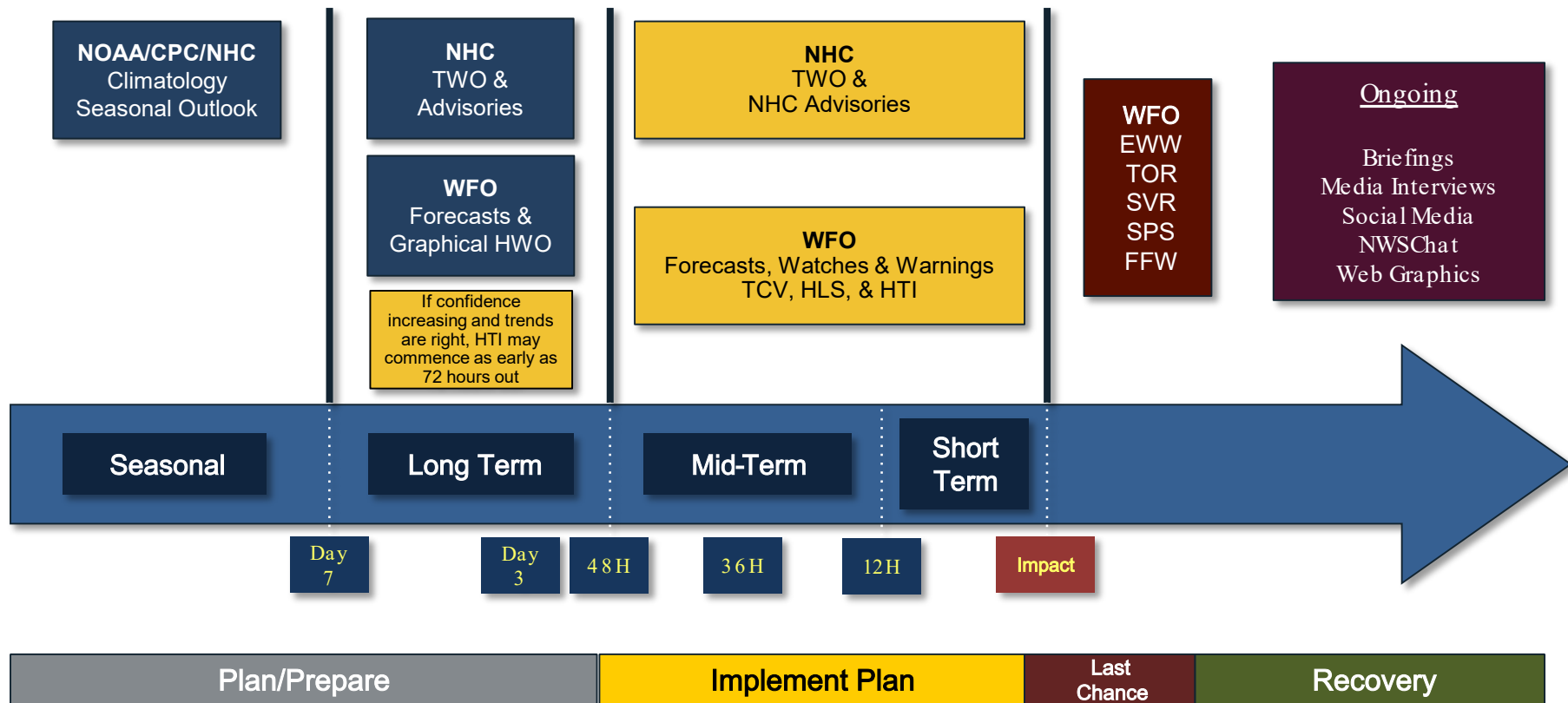
Site Specific Graphics

Social Media

Daily Web Briefings


Weather Stories

NHC & NWS WFO Timeline of Products



Point-n-Click Forecast

- ▶ 7-Day Guidance
- ▶ Site-Specific
- ▶ Derived from NWS Gridded Forecast Database
- ▶ Incorporates NHC & Probabilistic Wind Data
- ▶ Updated Frequently



NATIONAL WEATHER SERVICE

NATIONAL OCEANIC AND ATMOSPHERIC ADMINISTRATION

HOME FORECAST ▾ PAST WEATHER ▾ SAFETY ▾ INFORMATION ▾ EDUCATION ▾ NEWS ▾ SEARCH ▾ ABOUT ▾

[View Location Examples](#)

Your local forecast office is
[Melbourne, FL](#)


News Headlines

- [Peak Wind Gusts From Saturday, March 28th Through Sunday, March 29th](#)
- [NWS Melbourne Student Volunteer Opportunities through Spring 2027](#)
- [Latest Local Drought Information Statement \(Issued: March 26, 2026\)](#)
- [Seven Day Graphical Hazardous Weather Outlook](#)

Hazardous Weather Conditions

- [Rip Current Statement until April 2, 02:00 AM EDT](#)

Current conditions at
Daytona Beach International Airport (KDAB)
Lat: 29.17°N Lon: 81.07°W Elev: 23ft.




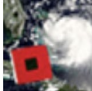
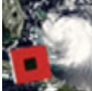
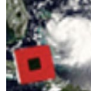
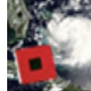
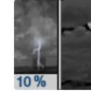
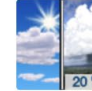


Mostly Cloudy
78°F
26°C

Humidity 48%
Wind Speed E 12 G 21 mph
Barometer 30.24 in (1024.0 mb)
Dewpoint 57°F (14°C)
Visibility 10.00 mi
Heat Index 79°F (26°C)
Last update 31 Mar 3:53 pm EDT

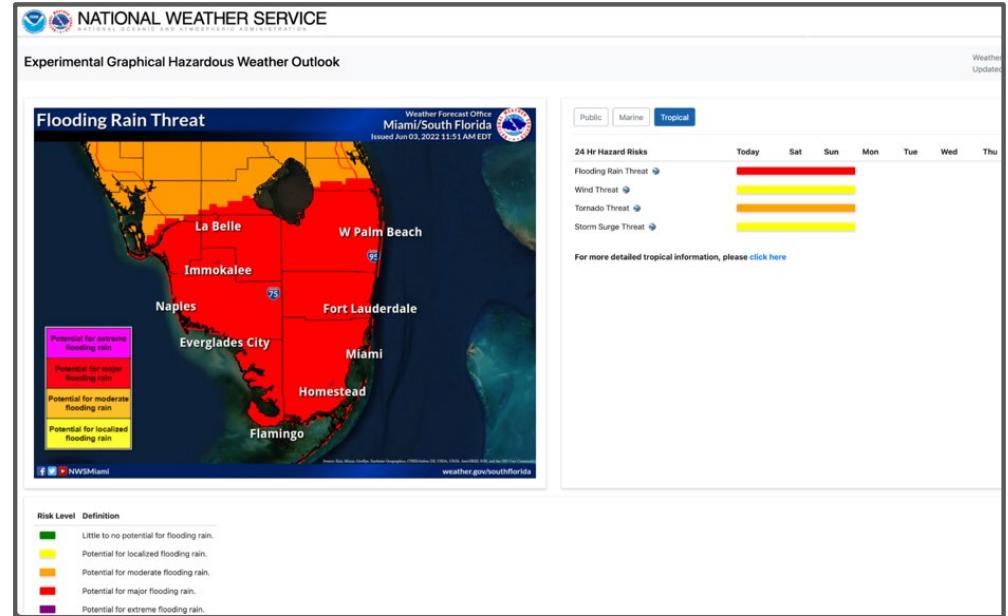
More Information:
[Local Forecast Office](#)
[More Local Wx](#)
[3 Day History](#)
[Hourly Weather Forecast](#)

Extended Forecast for 2 Miles WSW Holly Hill FL

This Afternoon	Tonight	Wednesday	Wednesday Night	Thursday	Thursday Night	Friday	Friday Night	Saturday
								
High: 80 °F	Low: 62 °F	High: 79 °F	Low: 65 °F	High: 82 °F	Low: 67 °F	High: 82 °F	Low: 66 °F	High: 82 °F
Mostly Sunny	Partly Cloudy	Partly Sunny then Slight Chance T-storms	Trop. Storm Conditions Possible	Trop. Storm Conditions Possible	Trop. Storm Conditions Possible	Trop. Storm Conditions Possible	Slight Chance T-storms then Mostly Cloudy	Mostly Sunny then Slight Chance Showers

Graphical Hazardous Weather Outlook

- ▶ 7-Day guidance for weather hazards (thunderstorms, heat, cold, rip currents, etc.)
- ▶ Can be used ahead of Watch & Warning phase
- ▶ Users should transition to Hurricane Threats & Impacts Graphics (HTI) during watch & warning phase



<https://weather.gov/erh/ghwo?wfo=WFO>

Hurricane Local Statement (HLS)

- ▶ Overview of tropical watches, warnings, storm information, and potential impacts for WFO's area of responsibility
- ▶ Ideal for partners who need high -level overview (i.e. media) of each threat:
 - ▶ Wind, Storm Surge, Flooding Rain, and Tornadoes
- ▶ Updated with every National Hurricane Center Advisory Package

225
WTUS82 KMLB 080336
HLSMLB
FLZ041-044-046-053-058-141-144-154-159-164-247-254-259-264-347-447-547-647-747-081030-

Hurricane Milton Local Statement Advisory Number 12
National Weather Service Melbourne FL AL142024
1136 PM EDT Mon Oct 7 2024

This product covers East Central Florida

****MILTON REMAINS AN EXTREMELY DANGEROUS CATEGORY FIVE HURRICANE****
****FINAL HURRICANE PREPARATIONS SHOULD BE COMPLETE BY TUESDAY NIGHT****

NEW INFORMATION

* CHANGES TO WATCHES AND WARNINGS:

- None

* CURRENT WATCHES AND WARNINGS:

- A Hurricane Warning is in effect for Northern Lake, Orange, Osceola, Seminole, and Southern Lake
- A Tropical Storm Warning and Hurricane Watch are in effect for Okeechobee
- A Storm Surge Watch and Hurricane Watch are in effect for Coastal Volusia, Northern Brevard Barrier Islands, and Southern Brevard Barrier Islands
- A Hurricane Watch is in effect for Coastal Indian River, Inland Indian River, Inland Northern Brevard, Inland Southern Brevard, Inland Volusia, Mainland Northern Brevard, and Mainland Southern Brevard
- A Tropical Storm Watch is in effect for Coastal Martin, Coastal Saint Lucie, Inland Martin, and Inland Saint Lucie

* STORM INFORMATION:

- About 710 miles southwest of Orlando FL
- 21.8N 89.9W
- Storm Intensity 165 mph
- Movement East or 90 degrees at 9 mph

SITUATION OVERVIEW

Major Hurricane Milton was located in the south central Gulf of Mexico at 11 PM, moving east at 9 mph. Milton remains an extremely powerful category 5 hurricane with maximum sustained winds of 165 mph

Tropical Cyclone VTEC Product (TCV)

- ▶ More specific, county and zone -based information, including Watch & Warning products
- ▶ Triggers Emergency Alert System (EAS), TV Network Crawls, and Wireless Emergency Alerts (WEA)
- ▶ Hazards based information drawn from forecast database and HTI information
 - ▶ Where, What, When, How Long
- ▶ Very long product designed to be parsed by web display and other applications

```
275
WTUS82 KMLB 090308
TCVMLB

URGENT - IMMEDIATE BROADCAST REQUESTED
Milton Local Watch/Warning Statement/Advisory Number 16
National Weather Service Melbourne FL AL142024
1108 PM EDT Tue Oct 8 2024

FLZ447-091015-
/O.CON.KMLB.HU.W.1014.000000T0000Z-000000T0000Z/
/O.CON.KMLB.SS.W.1014.000000T0000Z-000000T0000Z/
Northern Brevard Barrier Islands-
1108 PM EDT Tue Oct 8 2024

...HURRICANE WARNING REMAINS IN EFFECT...
...STORM SURGE WARNING REMAINS IN EFFECT...

* WIND
- LATEST LOCAL FORECAST: Equivalent Cat 1 Hurricane force wind
- Peak Wind Forecast: 60-80 mph with gusts to 100 mph
- Window for Tropical Storm force winds: Wednesday evening
  until early Friday morning
- Window for Hurricane force winds: Thursday morning until
  Thursday afternoon

- THREAT TO LIFE AND PROPERTY THAT INCLUDES TYPICAL FORECAST
  UNCERTAINTY IN TRACK, SIZE AND INTENSITY: Potential for wind 74
  to 110 mph
- The wind threat has remained nearly steady from the
  previous assessment.
- PLAN: Plan for life-threatening wind of equivalent CAT 1 or
  2 hurricane force.
- PREPARE: Remaining efforts to protect life and property
  should be urgently completed. Prepare for considerable wind
  damage.
- ACT: Move to safe shelter before the wind becomes hazardous.

- POTENTIAL IMPACTS: Extensive
- Considerable roof damage to sturdy buildings, with some
  having window, door, and garage door failures leading to
  structural damage. Mobile homes severely damaged, with some
  destroyed. Damage accentuated by airborne projectiles.
  Locations may be uninhabitable for weeks.
- Many large trees snapped or uprooted along with fences and
  roadway signs blown over.
- Some roads impassable from large debris, and more within
```

Accessing Local Products

The screenshot shows the National Weather Service website interface. At the top, there are logos for NOAA and the National Weather Service, along with the text "NATIONAL WEATHER SERVICE" and "NATIONAL OCEANIC AND ATMOSPHERIC ADMINISTRATION". A navigation bar includes links for HOME, FORECAST, PAST WEATHER, WEATHER SAFETY, INFORMATION CENTER, NEWS, SEARCH, and ABOUT. Below the navigation bar, there is a location search box with "Change location ..." and a "Go" button. A "View Location Examples" link is also present. The "Your local forecast office is" section identifies the office as "Wilmington, NC". A "News Headlines" section lists three items: "Rip Currents: Get Educated & Stay Safe at the Beach!", "Spring Weather Safety Tips & Information", and "Subtropical Storm Ana forms off the Carolina coast. See more at the National Hurricane Center webpage." A "Hazardous Weather Conditions" section lists three items: "Tropical Storm Warning", "Hurricane Local Statement", and "Hazardous Weather Outlook". A red arrow points to the "Hurricane Local Statement" link with the text "Click to Access Text Parsed By Location". Below this, there are social media sharing options and a link to "En Español". The "Current conditions at" section is for "Whiteville, Columbus County Municipal Airport (KCPC)" with coordinates "Lat: 34.27°N Lon: 78.72°W Elev: 98ft.". A weather image shows rain, and the current conditions are "Light Rain" with a temperature of "69°F" and "21°C". Other weather data includes "Humidity 87%", "Wind Speed N 9 G 18 mph", "Barometer 30.01 in", "Dewpoint 65°F (18°C)", "Visibility 10.00 mi", and "Last update 9 May 8:35 am EDT". A "More Information" section includes links for "Local Forecast Office", "More Local Wx", "3 Day History", and "Mobile Weather".

NATIONAL WEATHER SERVICE
NATIONAL OCEANIC AND ATMOSPHERIC ADMINISTRATION

HOME FORECAST PAST WEATHER WEATHER SAFETY INFORMATION CENTER NEWS SEARCH ABOUT

Change location ... Go

[View Location Examples](#)

Your local forecast office is
Wilmington, NC

News Headlines

- [Rip Currents: Get Educated & Stay Safe at the Beach!](#)
- [Spring Weather Safety Tips & Information](#)
- [Subtropical Storm Ana forms off the Carolina coast. See more at the National Hurricane Center webpage.](#)


Hazardous Weather Conditions

- [Tropical Storm Warning](#)
- [Hurricane Local Statement](#)
- [Hazardous Weather Outlook](#)

Click to Access Text Parsed By Location

En Español [Share](#) | [f](#) [t](#) [e](#) [v](#) [m](#)

Current conditions at
Whiteville, Columbus County Municipal Airport (KCPC) |
Lat: 34.27°N Lon: 78.72°W Elev: 98ft.

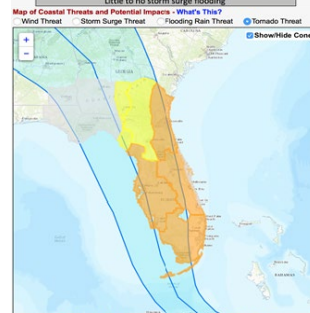
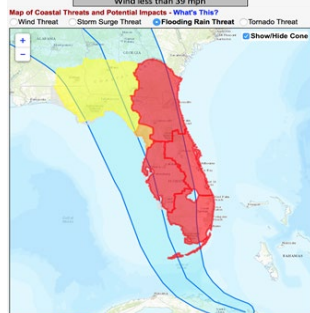
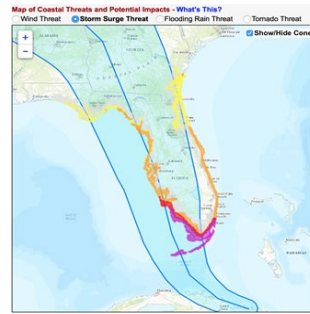
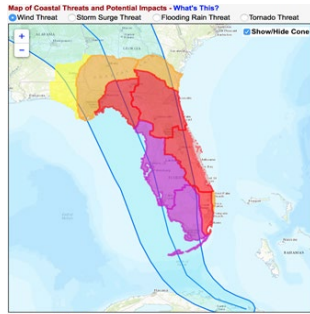
 Light Rain
69°F
21°C

Humidity 87%
Wind Speed N 9 G 18 mph
Barometer 30.01 in
Dewpoint 65°F (18°C)
Visibility 10.00 mi
Last update 9 May 8:35 am EDT

More Information:
[Local Forecast Office](#)
[More Local Wx](#)
[3 Day History](#)
[Mobile Weather](#)

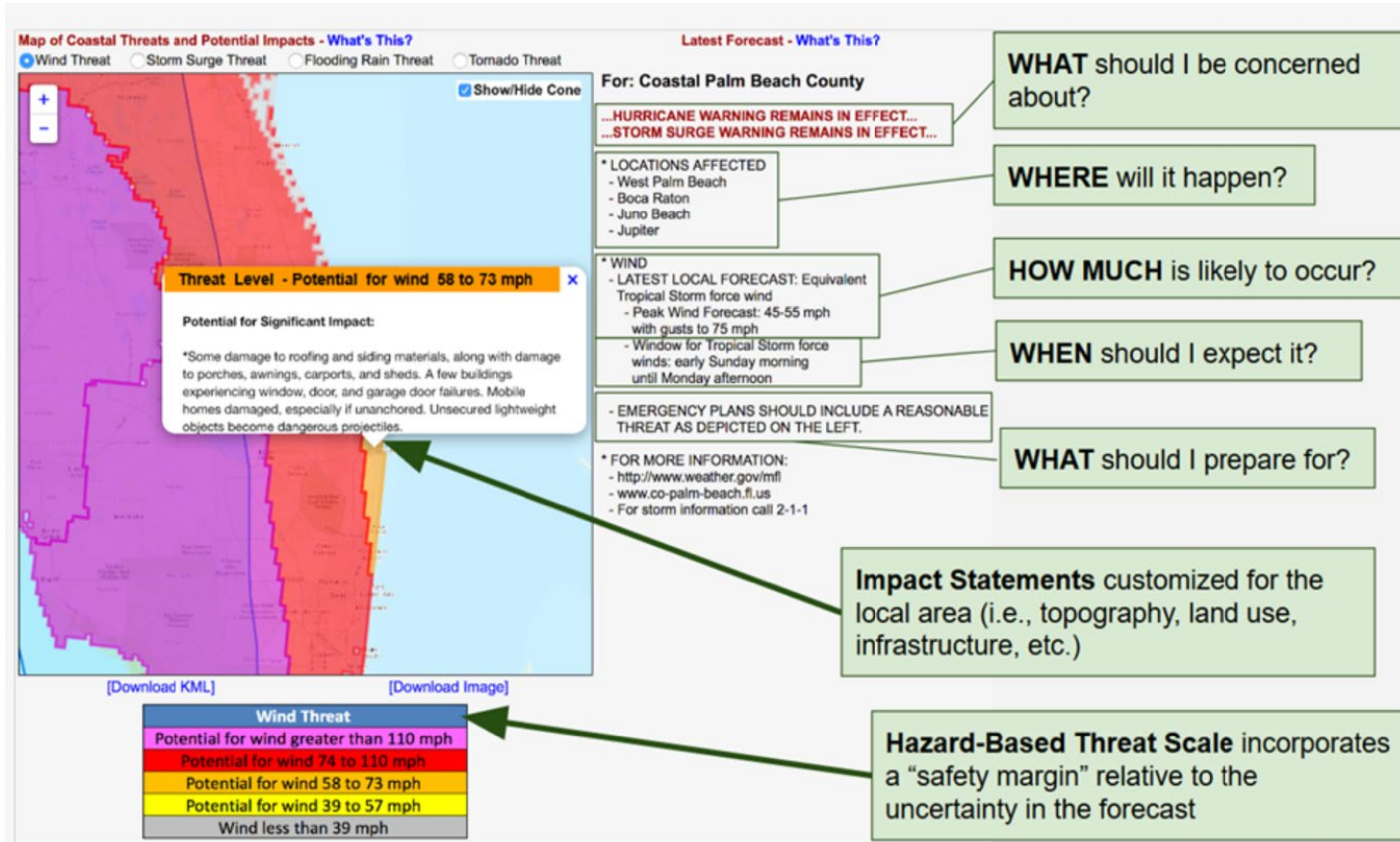
Hurricane Threats & Impacts (HTI)

- ▶ Colorized threat maps with potential impact statement for primary hazards
 - ▶ Wind
 - ▶ Storm Surge
 - ▶ Flooding Rain
 - ▶ Tornadoes
- ▶ Incorporates probabilistic guidance (not expected conditions) to highlight threat



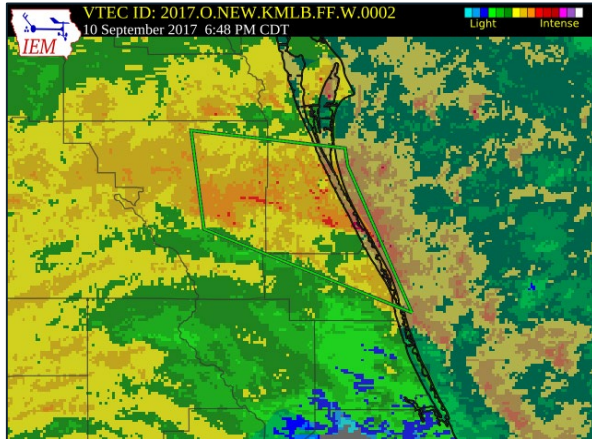
Answers the Question:
"What Should We Plan & Prepare For?"
NOT
"What Can We Expect?"

Hurricane Threats & Impacts (HTI)



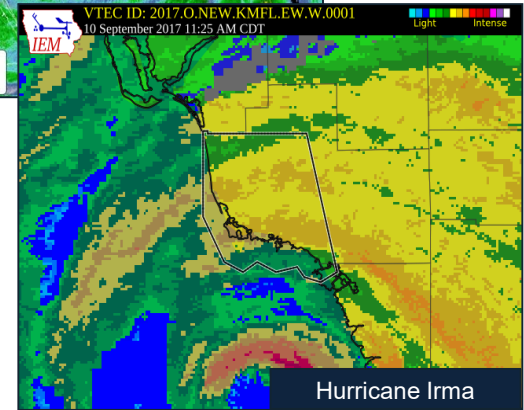
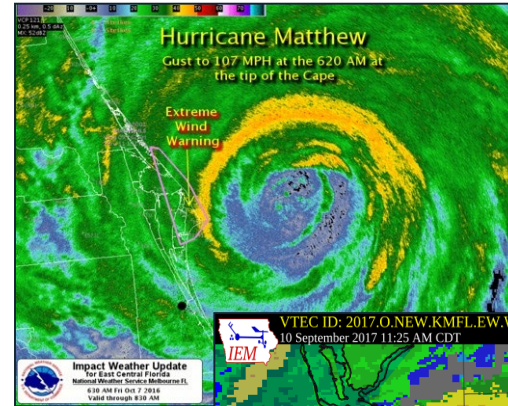
Shorter-Fused Warnings

- ▶ Issued during the onset and impact phase
 - ▶ Tornado (Impact-Based)
 - ▶ Flash Flood (Impact Based)
 - ▶ Extreme Wind Warning
 - ▶ Special Weather Statements (SPS)



Extreme Wind Warning

- ▶ Requirements:
 - ▶ Hurricane is a category 3+ AND
 - ▶ Sustained surface winds of 100 knots (115 mph) or greater are occurring or are expected to occur within one hour
- ▶ Valid time 2 hours or less
- ▶ Alerted via NWR/EAS, Mobile devices, and accessible through NWS Point and Click Pages
- ▶ Warning issued when there is an imminent threat to life & property



EWW's Main Message

"It's Time to Shelter Within Your Shelter!"

Local & Post-Storm Reports

- ▶ **Local Storm Report – LSR**
 - ▶ Reports of preliminary damage, wind gusts, flooding, & potential tornado activity
- ▶ **Post-Storm Report – PSH**
 - ▶ Issued within 5 days of last TCV & used to record and document local impacts
 - ▶ Updated as information becomes available

```
618
NWUSS2 KTAE 301027
LSRTAE

Preliminary Local Storm Report
National Weather Service Tallahassee FL
627 AM EDT Wed Aug 30 2023

..TIME...  ..EVENT...    ...CITY LOCATION...  ...LAT.LON...
..DATE...  ...MAG...    ..COUNTY LOCATION..ST... ..SOURCE...
..REMARKS..

0609 AM    Tropical Cyclone Horseshoe Point    29.44N 83.29W
08/30/2023                Dixie                FL    Mesonet

The Horseshoe Beach WeatherSTEM station
gusted to 81 mph.
```

&&

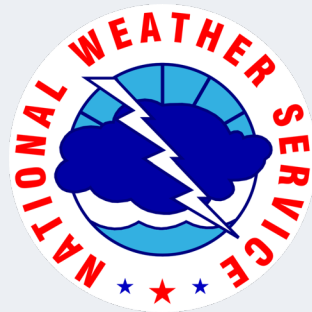
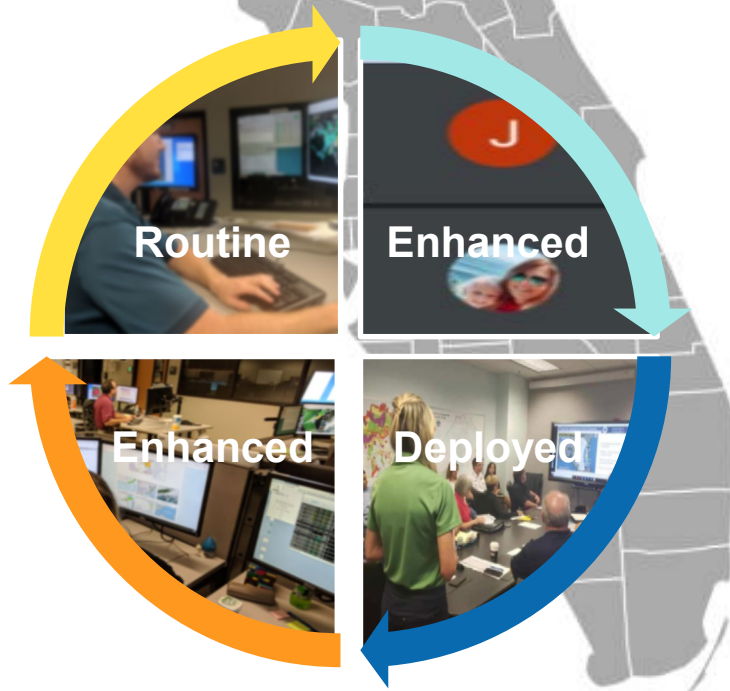
POST TROPICAL CYCLONE REPORT


Storm Name	Idalia
NWS Office	Tallahassee
Begin/End Date	08/29/2023-08/30/2023
Fatalities	1 - Direct N/A - Indirect
Tornadoes	0

Event Summary

Hurricane Idalia made landfall on the morning of August 30th along the coast of Taylor County Florida near Keaton Beach at approximately 745 am EDT. The hurricane made landfall with estimated sustained winds of 125 mph, making it a Category 3 hurricane on the Saffir-Simpson Hurricane Wind Scale, the first major hurricane on record to make landfall in this portion of Florida. Hurricane Idalia moved inland across the eastern Florida Big Bend and into South Central Georgia during the morning hours. Strong winds caused extensive damage to trees, buildings, and infrastructure along a broad swath stretching west to Tallahassee and east beyond the Suwannee River. Significant and devastating storm surge accompanied the hurricane into the Taylor and Dixie County coasts, where water levels rose considerably, inundating numerous structures along the coast and flooding residences and businesses many miles inland. Significant damage to property and infrastructure was associated with the storm surge that will take a considerable time to rebuild. The peak surge values observed were from Dekle Beach in Taylor County southeastward to Horseshoe Beach in Dixie County. Surge heights in this area along the immediate coast were within the range of 7 to 12 feet above normally dry ground. Lower values of up to 6 feet above normally dry ground were noted south of Horseshoe Beach near the community of Suwannee.

Adaptable & Scalable Support



NWS Chat 

- Threads
- Mentions & reactions
- Drafts & sent
- Saved items
- Slack Connect
- More

Connections


Starred

- # sr-crp-primary
- # sr-jax-primary
- # sr-mfl-primary
- # sr-mlb-primary
- # sr-sju-primary
- # sr-tbw-primary


Channels

Direct messages


- NWS-SR-MLB Will U you
- Add teammates

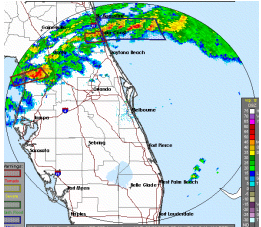
sr-mlb-primary 

Search National Weather Service



#sr-mlb-primary  10


+ Add a bookmark



NWS-SR-MLB Tim S 11:30 p.m.
 KMLB Radar Reflectivity 11:27 p.m.




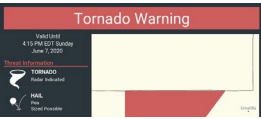
Radar indicates well developed supercell with persistent rotation has pushed onshore Citrus County. This storm is expected to approach Lake County around 12:20 - 12:30 a.m.



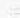

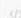

1  3  Last reply 2 min. ago


EM-Lake-John S 11:33 p.m.
 Thanks for the update, Tim. Now hearing of unconfirmed reports of damage in Crystal River. We are watching closely.








NWS-SR-MLB Dave S 12:01 a.m.
 Tornado Warning forthcoming for portions of northern Lake County as strong rotation persists within the supercell. This storm has a history of producing damage and extreme caution is urged given the time of night! Current trajectory of the storm takes it near **Wildwood, Fruitland Park, and Leesburg area** between 12:20 - 12:25 a.m.


WxBot APP 12:03 a.m.
 Melbourne FL: issues **TORNADO WARNING** (TOR 003) for NORTHERN LAKE through 12:45 a.m. Thu. Feb. 2, 2023.



B I B      

Message #sr-mlb-primary

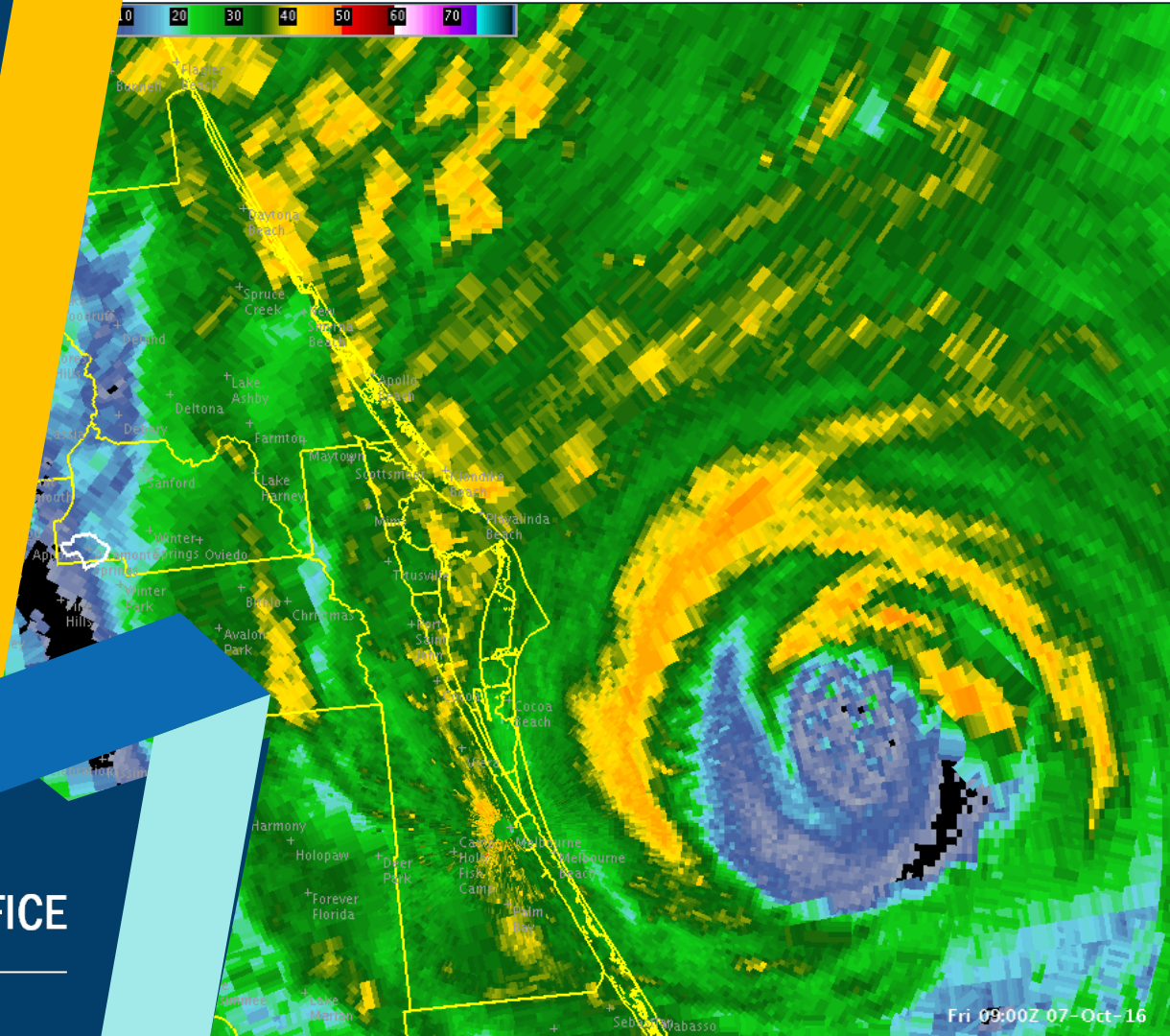
Local NWS Tropical Products & Impacts-Based Decision Support Services

Will Ulrich
Warning Coordination
Meteorologist
NWS Melbourne



WEATHER FORECAST OFFICE

Melbourne  Florida



Fri 09:00Z 07-Oct-16