



FEMA

Unit 1:

Hurricane Basics

Unit 1 Objectives



FEMA

Unit Objectives

- **At the end of Unit 1, you should be able to:**
 - Describe the characteristics and life cycle of a tropical cyclone.
 - Describe Atlantic Hurricane Climatology.
 - Explain the hurricane hazards and how water is responsible for the vast majority of direct fatalities.

Tropical Cyclones Defined



FEMA

Tropical Cyclones

- **Large, long-lived, low-pressure system**
(can be hundreds of miles wide, lasting for days)
- **Form over sub/tropical oceans**
- **No fronts attached**
- **Produce organized thunderstorm activity**
- **Have a closed surface wind circulation around a well-defined center**



Tropical Cyclone Classification



FEMA

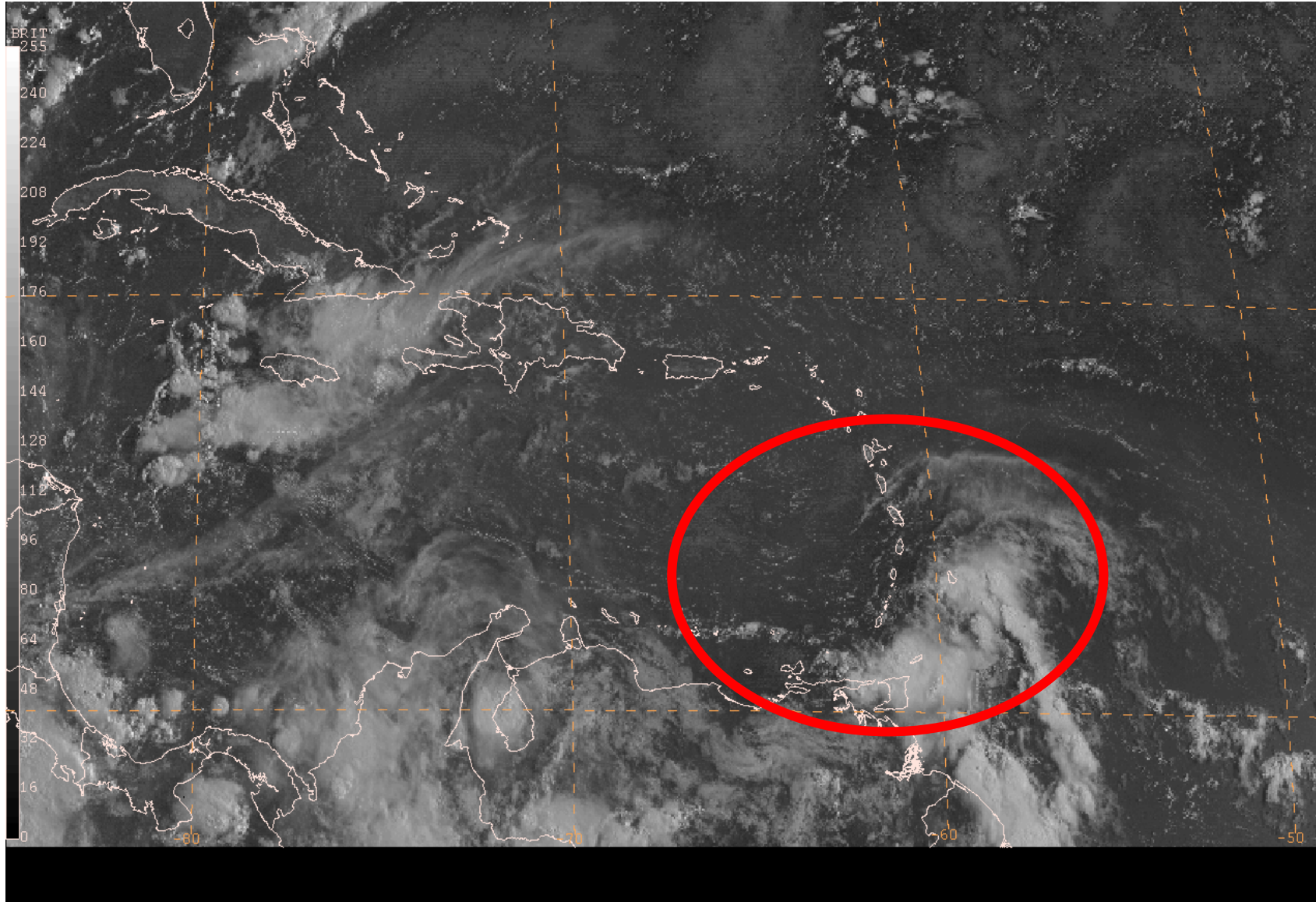
Maximum Wind Speed:

- **Tropical Depression: <39 mph**
- **Tropical Storm: 39–73 mph**
- **Hurricane: 74 mph or greater**
 - *Major Hurricane: 111 mph or greater*

Surface Circulation? Organized?



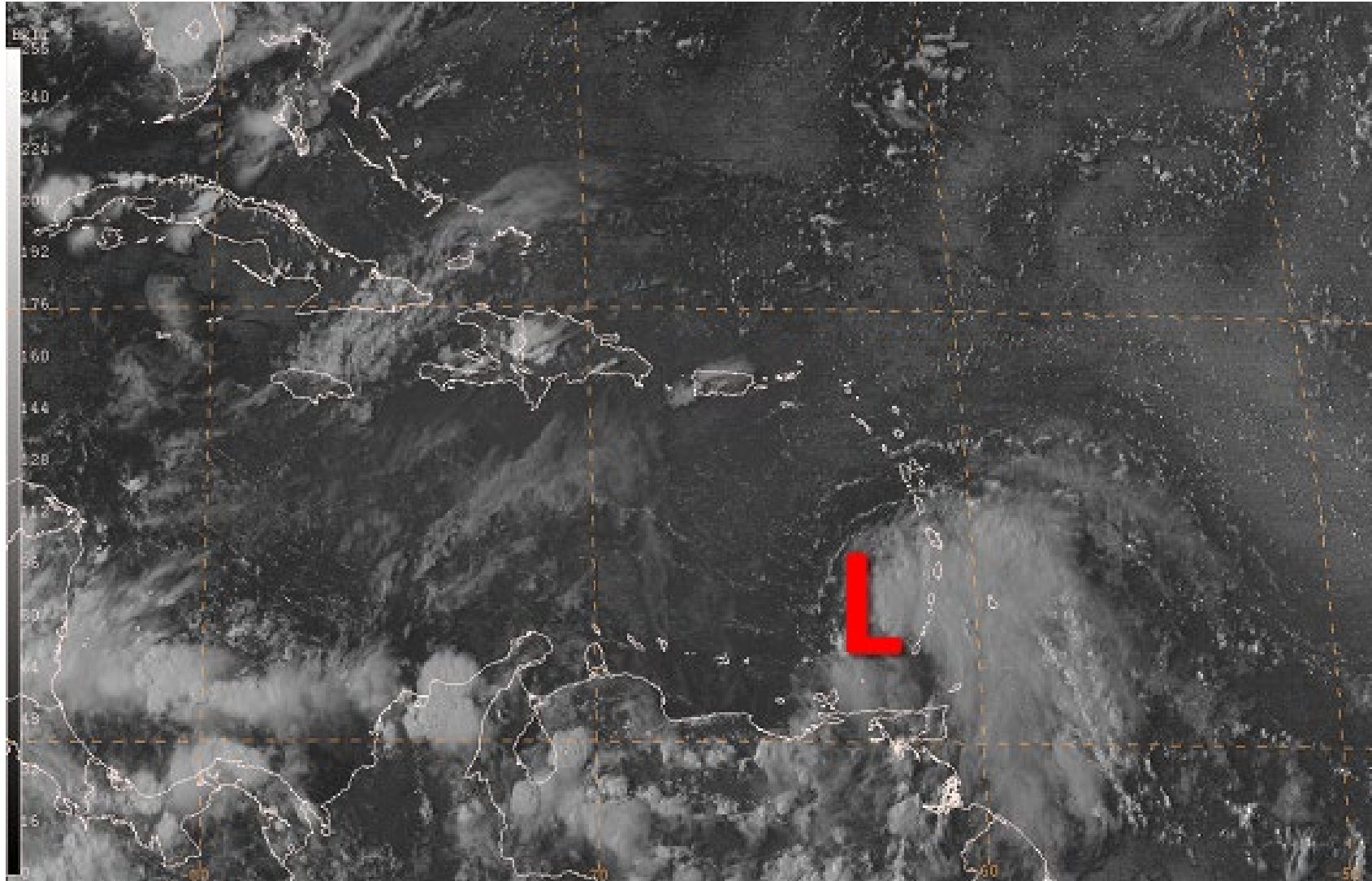
FEMA



Ernesto 2006



FEMA

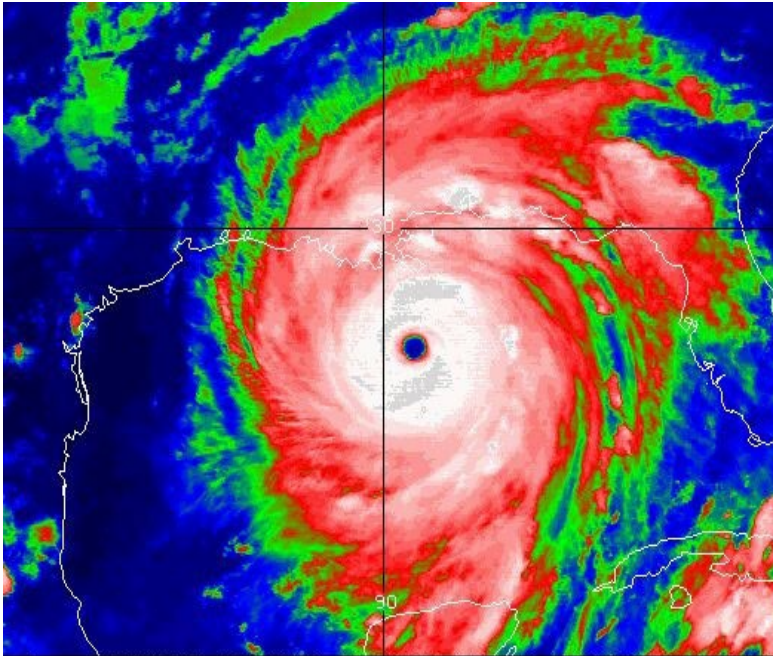


Advisory 1; issued based on aircraft data

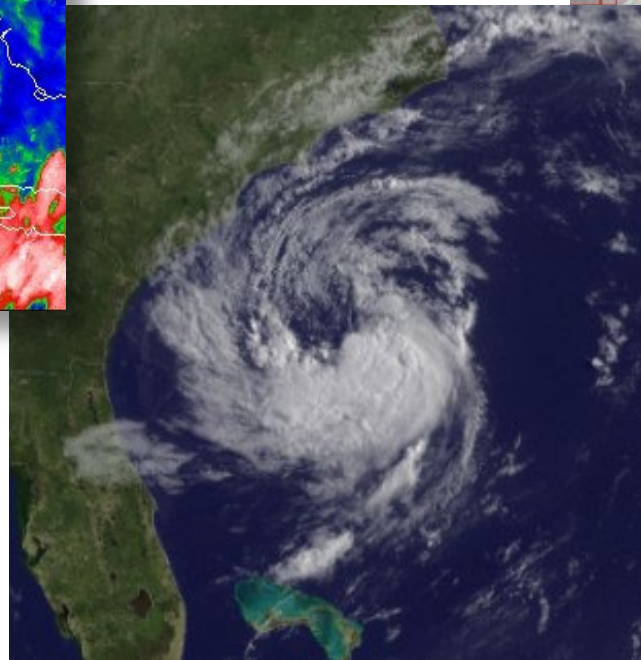
Tropical, Subtropical, & Extratropical



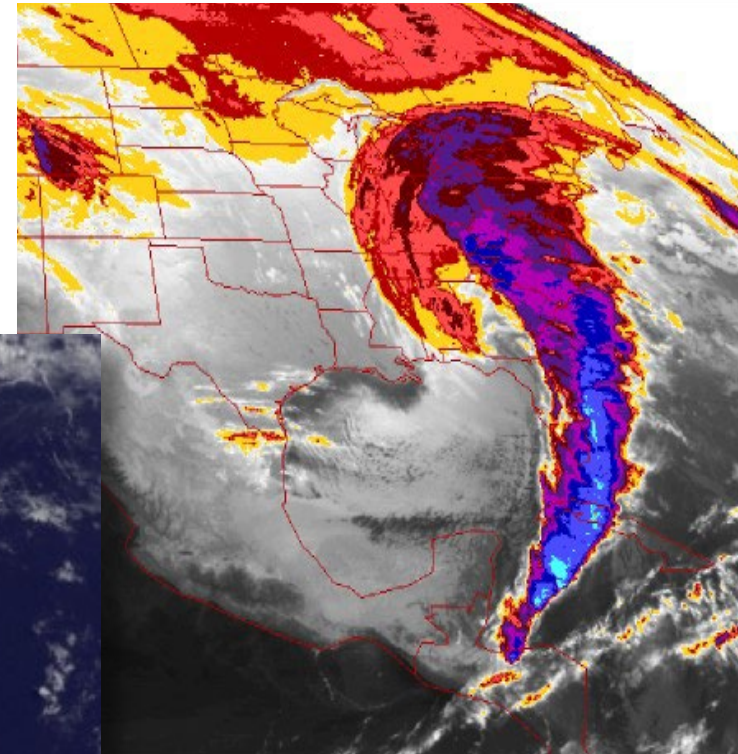
FEMA



Hurricane Katrina 2005



Subtropical Storm Ana 2015

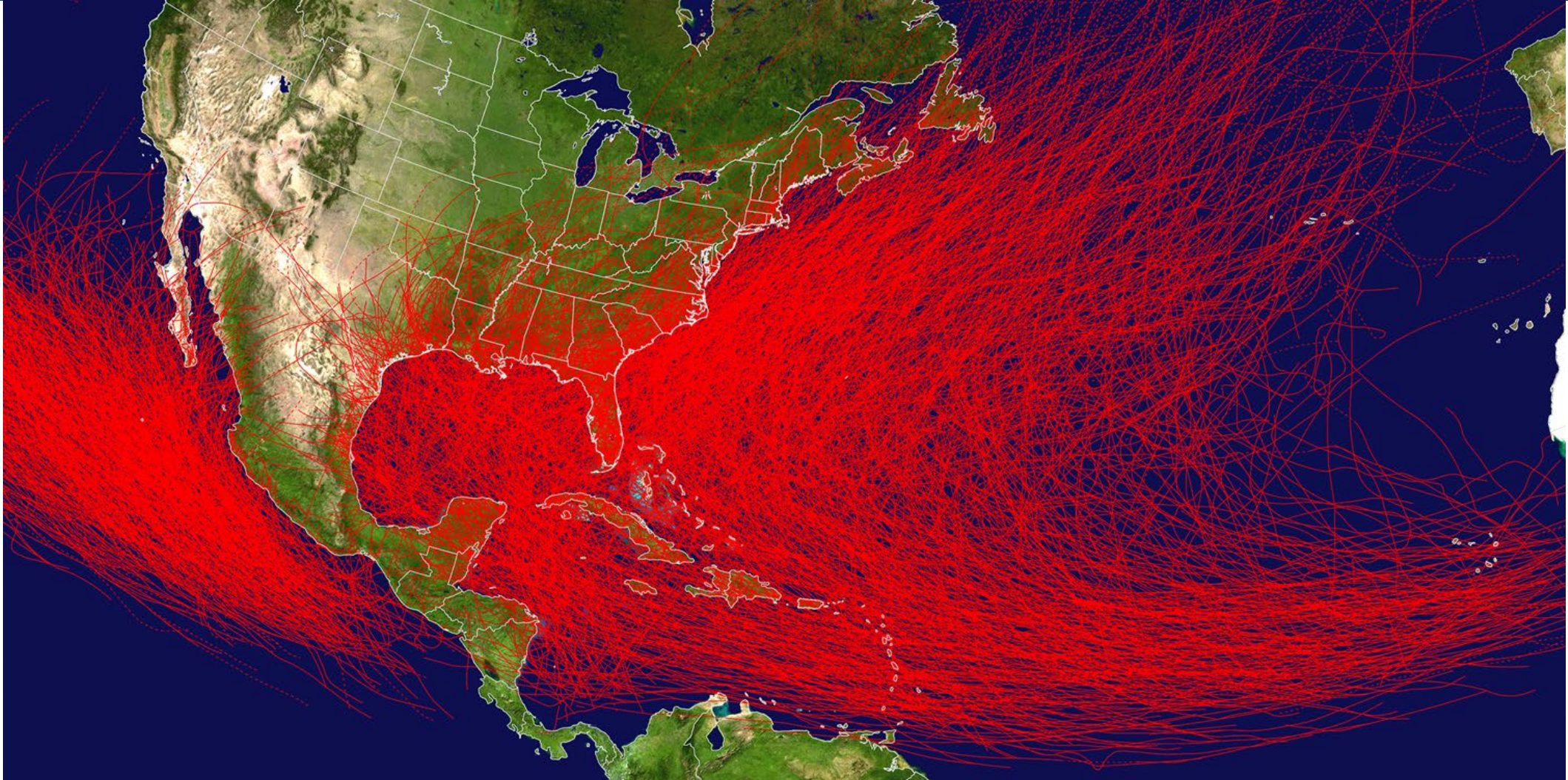


March Superstorm 1993

Tropical Cyclone History



FEMA

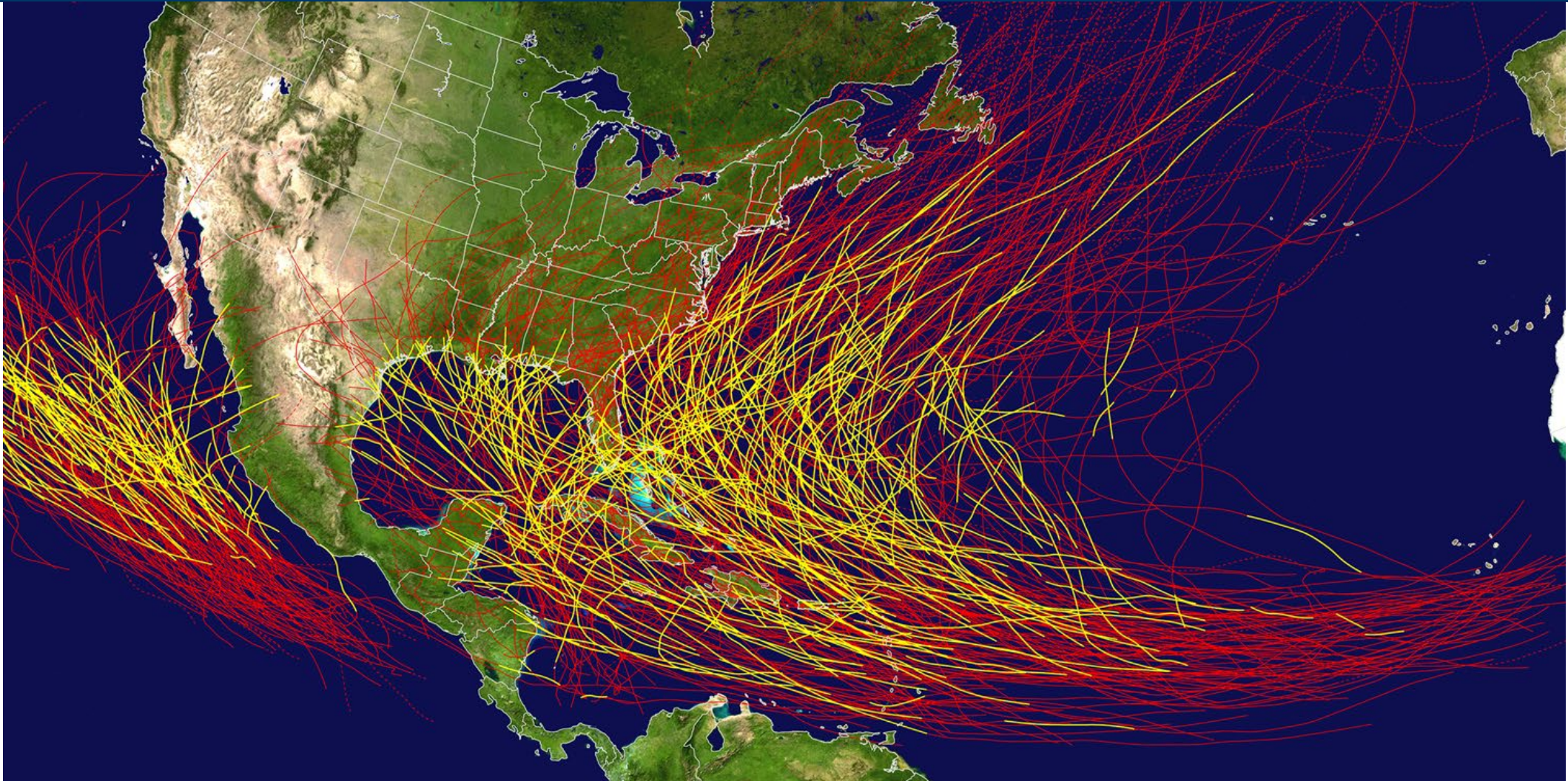


- **Data since 1949 in Pacific, 1851 in Atlantic**

Major Hurricane History



FEMA



- **Data since 1949 in Pacific, 1851 in Atlantic**



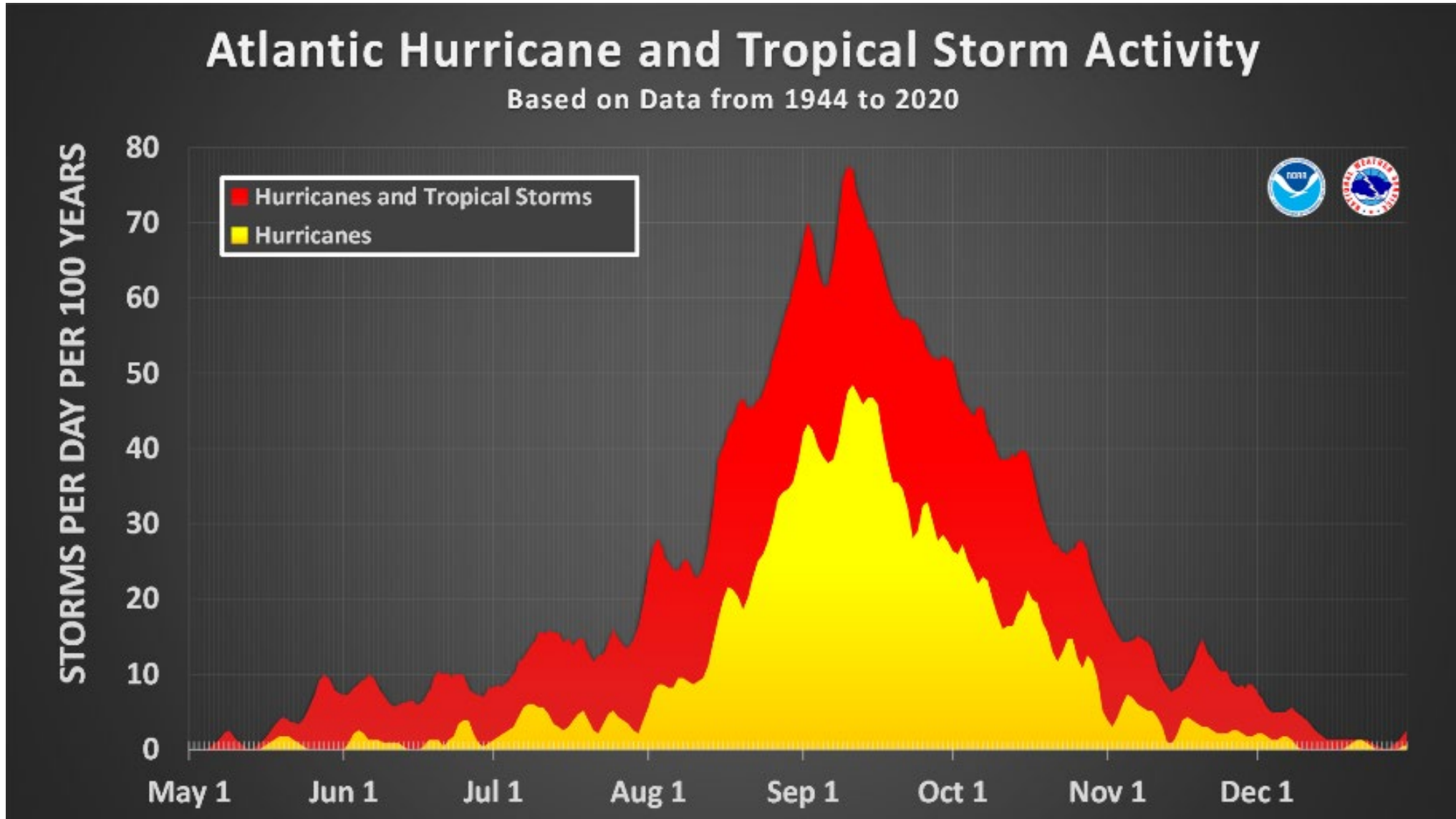
What month has the most hurricane activity in the Atlantic?

- A. December
- B. August
- C. June
- D. September

Annual Atlantic Storm Activity



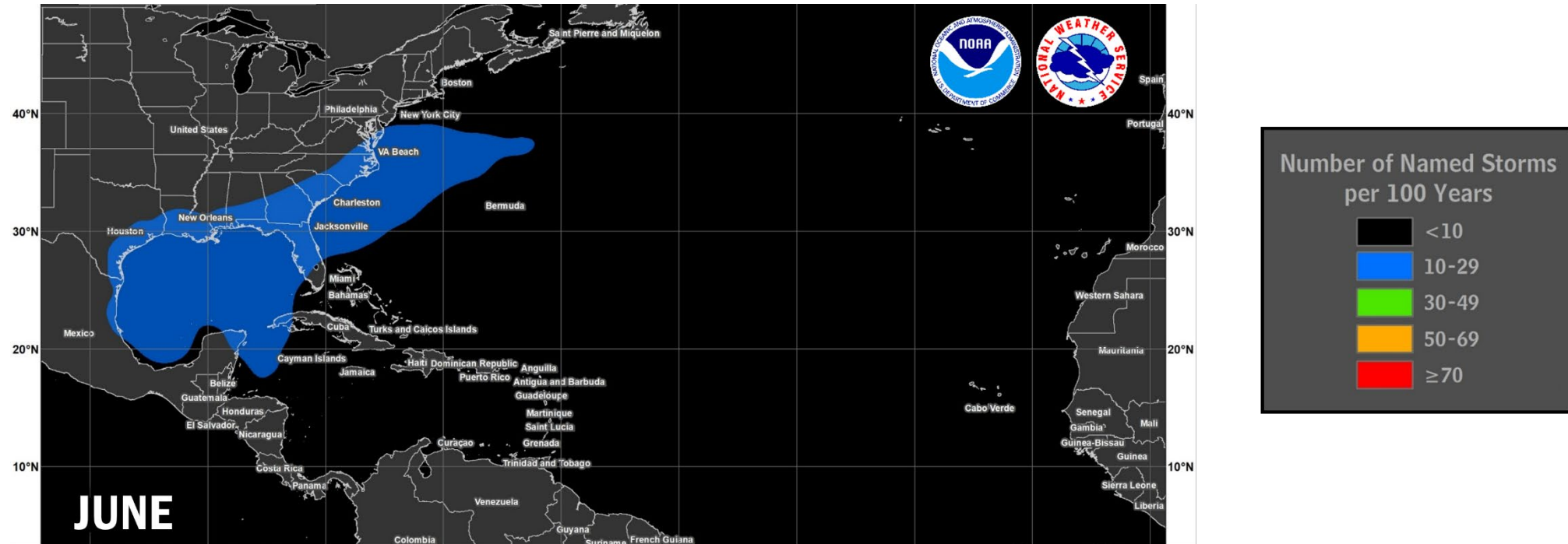
FEMA



June Occurrence Areas



FEMA

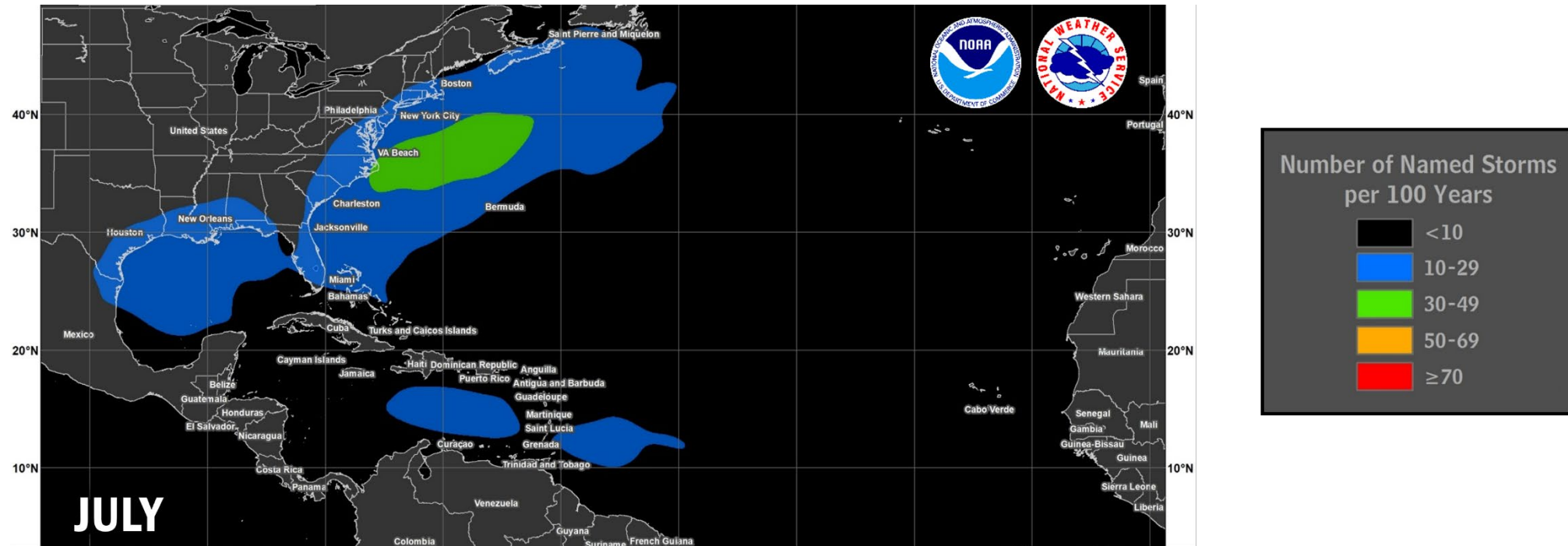


- On average, about one storm every year.
- Most June storms form in the NW Caribbean Sea or Gulf of America.

July Occurrence Areas



FEMA

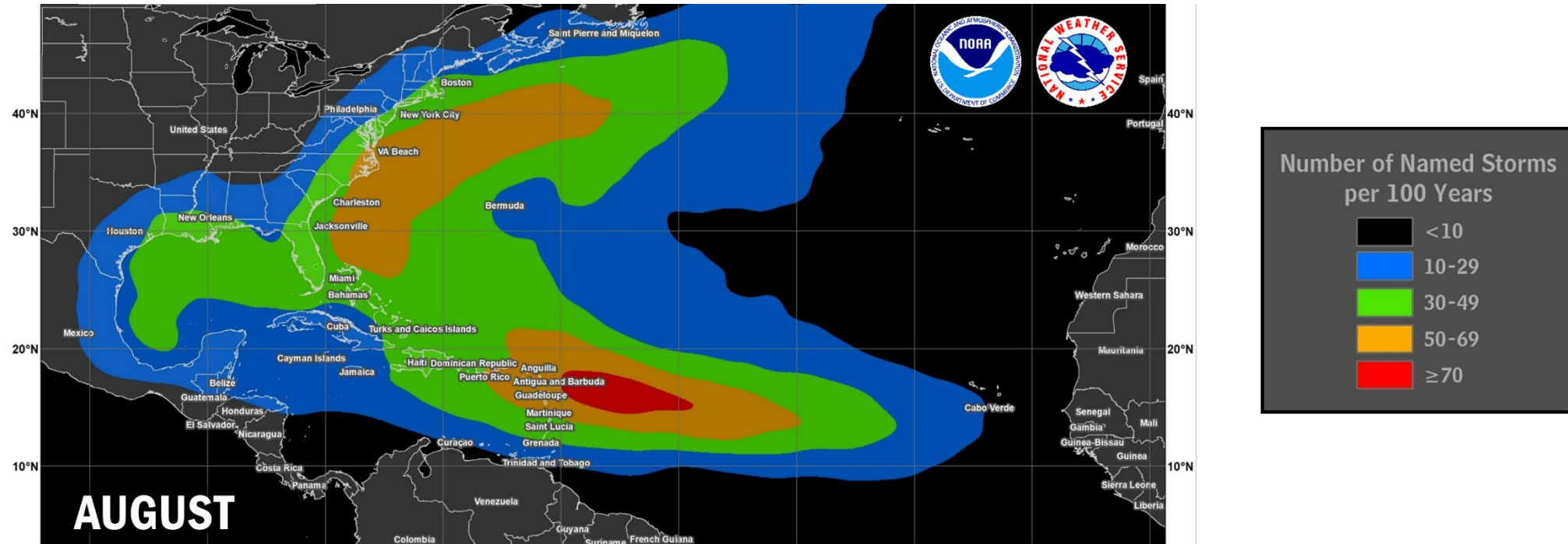


- On average, one to two named storms every year.
- July occurrence areas spread east and cover the western Atlantic, Caribbean, and Gulf of America.

August Occurrence Areas



FEMA

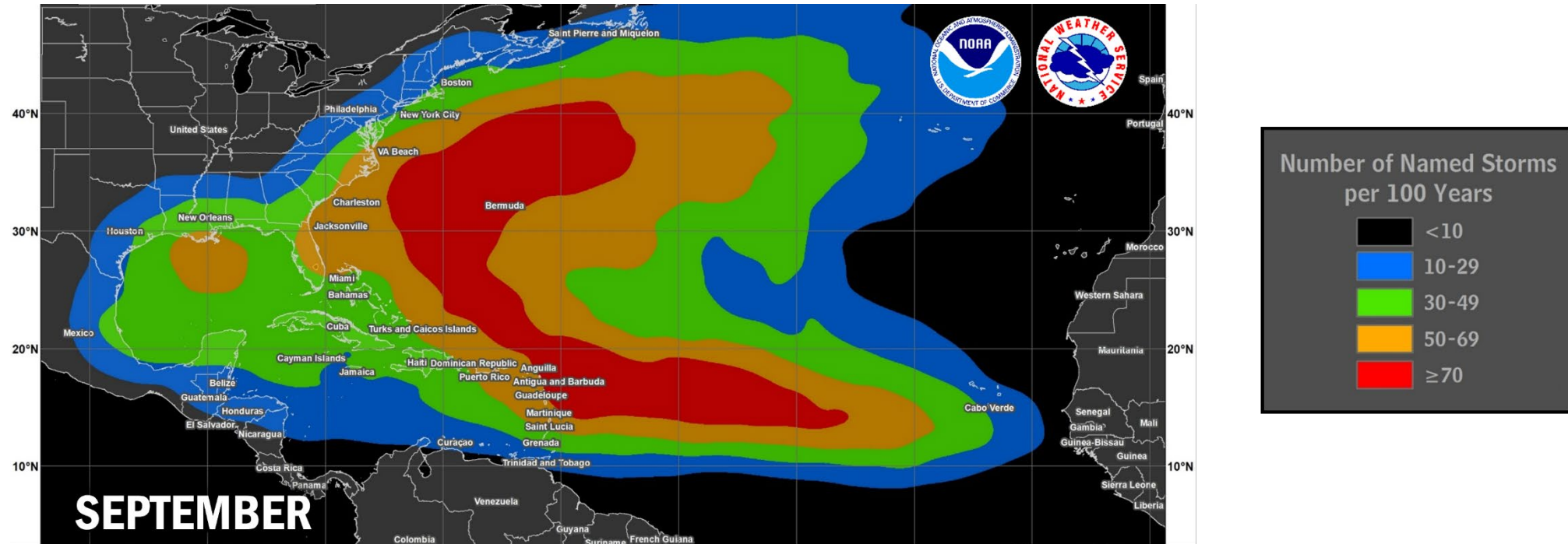


- On average, about three to four storms form each year.
- The Cape Verde season usually begins in August.

September Occurrence Areas



FEMA

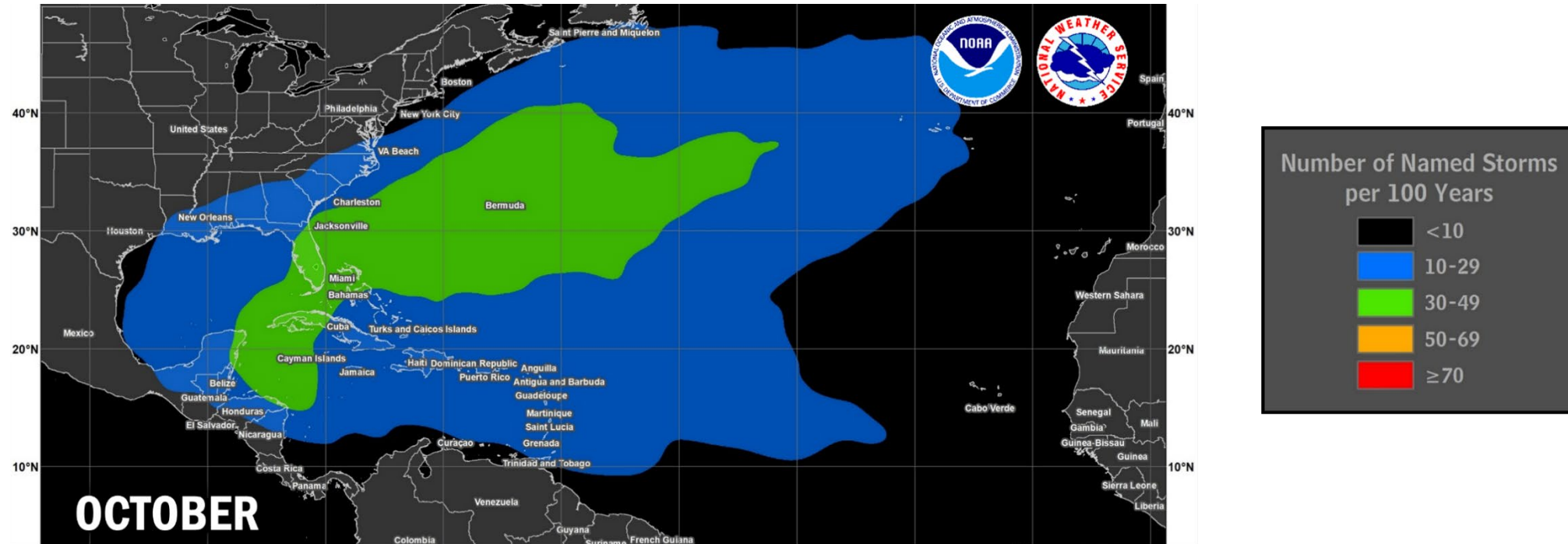


- Climatological peak of the season; on average, four to five storms every year.
- Storms can form nearly anywhere in the basin; long-track Cape Verde storms are more likely.

October Occurrence Areas



FEMA

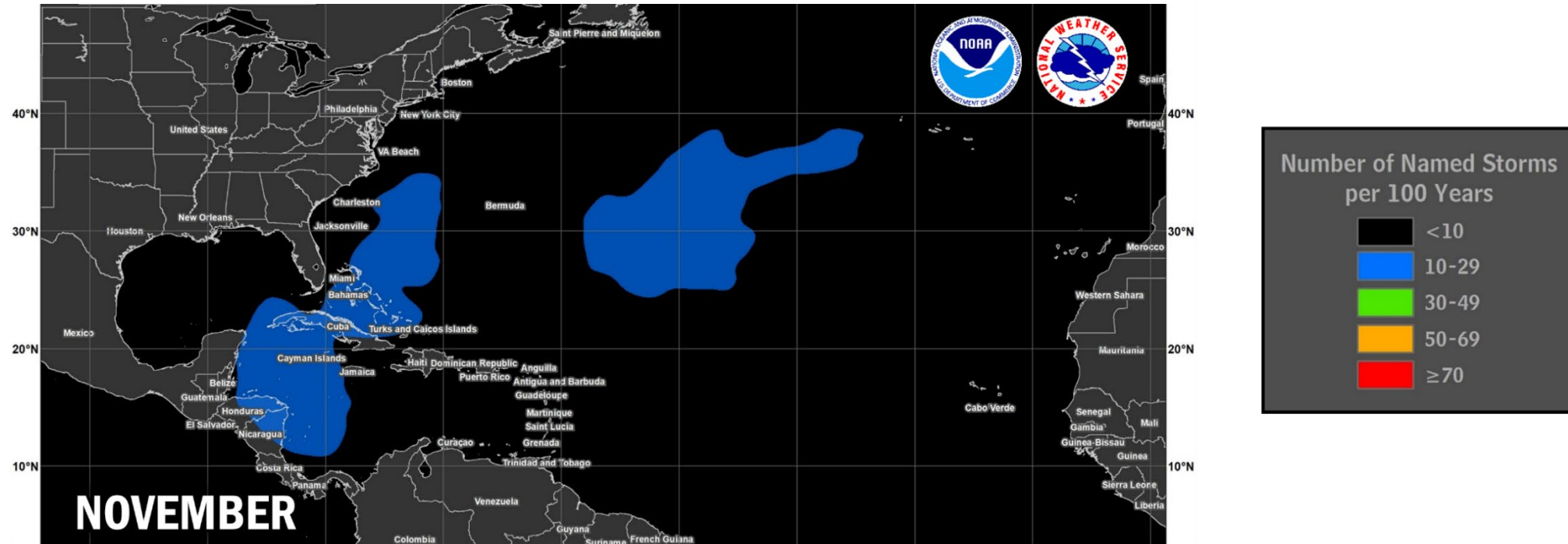


- On average, two to three storms every year.
- Cape Verde season ends, and activity shifts to the Gulf of America, Caribbean Sea, and western Atlantic Ocean.

November Occurrence Areas



FEMA

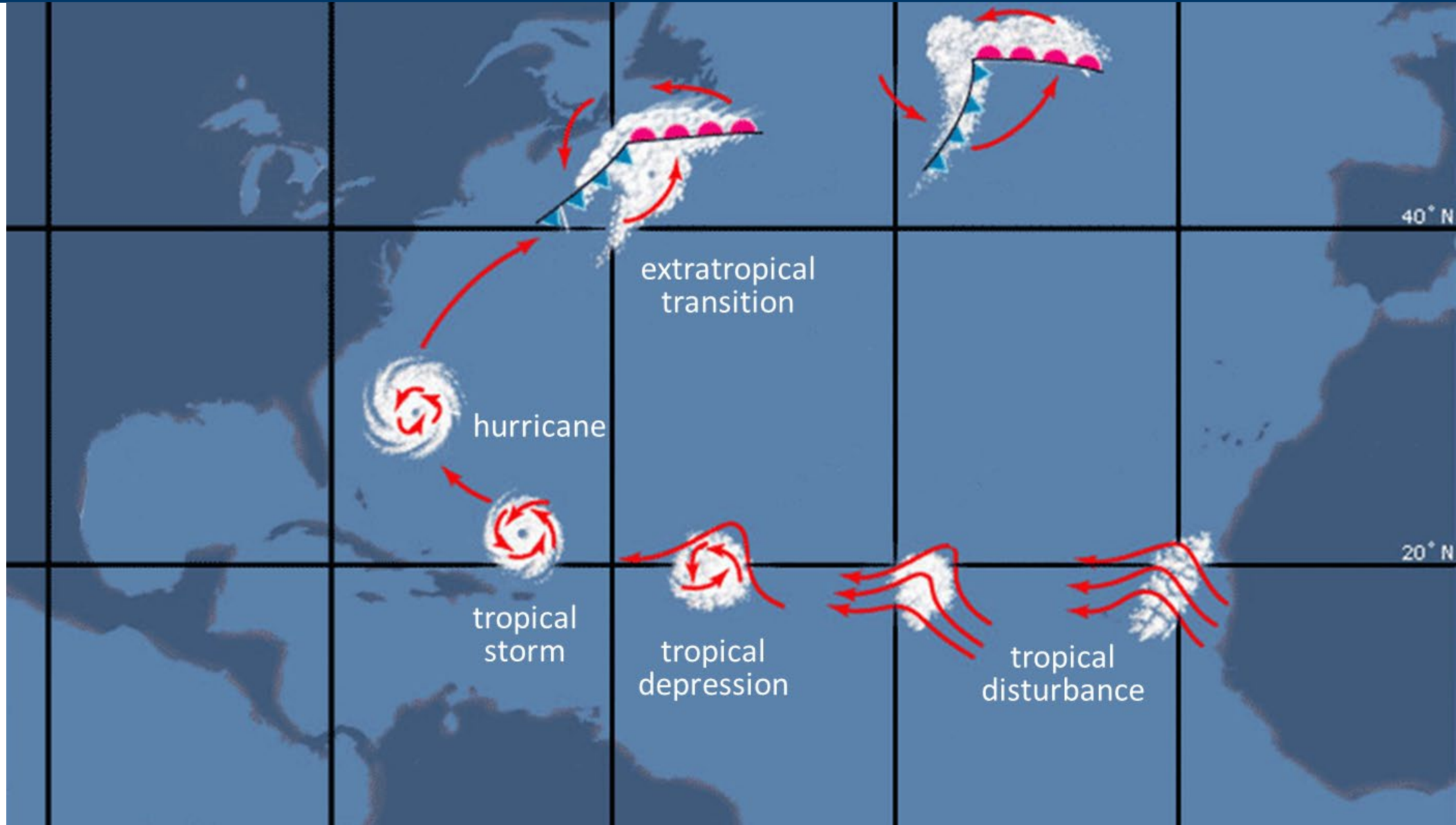


- On average, about one storm every other year.
- Storms typically occur in the western Caribbean Sea or western and central Atlantic Ocean.

Cape Verde Hurricane Lifecycle



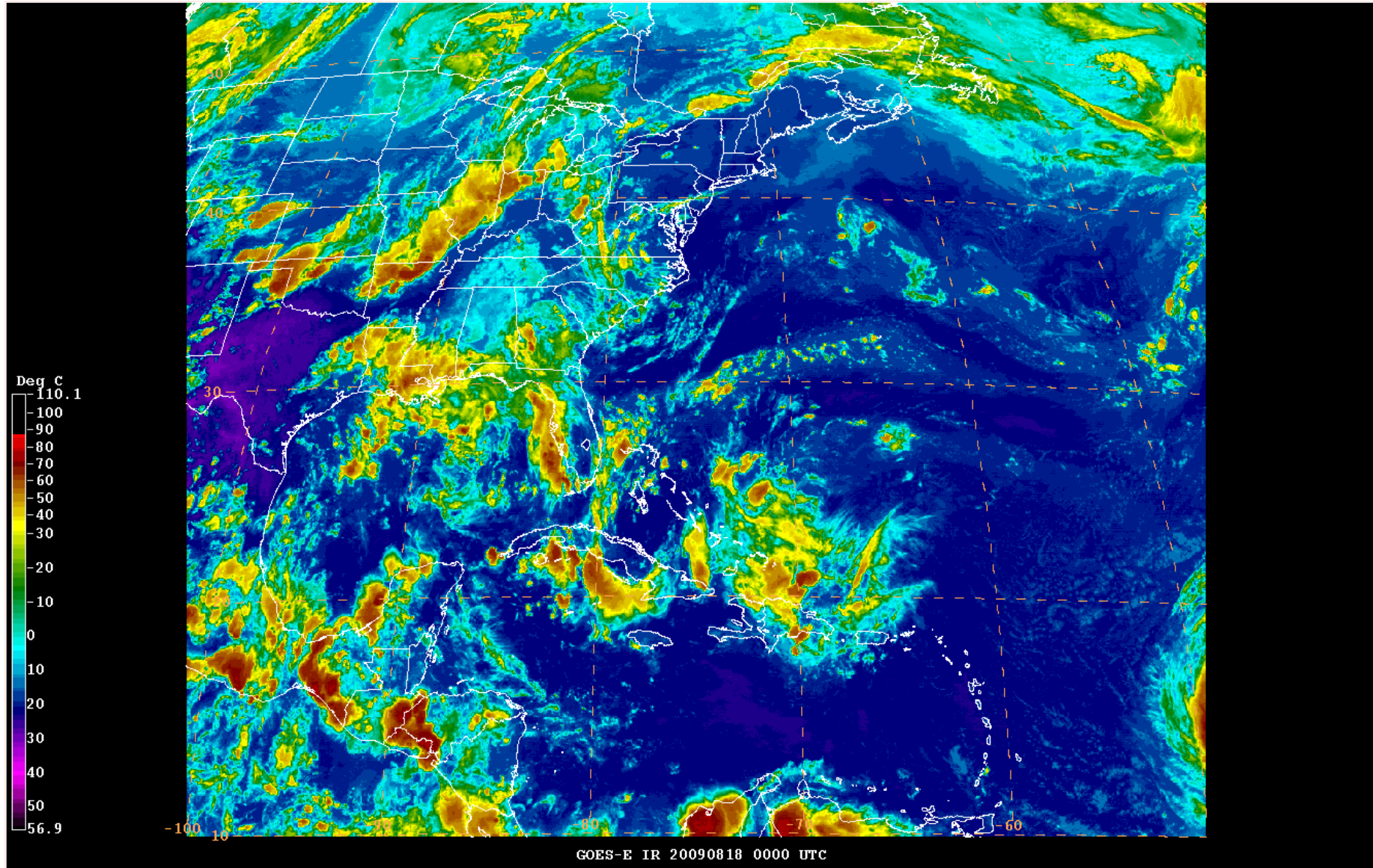
FEMA



Hurricane Bill (2009)



FEMA





Which of the following are ingredients for hurricane development?

- A. Warm Water
- B. Cold Air
- C. Lots of Moisture
- D. Strong Winds Aloft
- E. Icebergs

Ingredients for a Tropical Cyclone



FEMA

Building Blocks

- 1) A pre-existing disturbance (vorticity or spin)



- 2) Location several degrees north of the equator



- 3) Little change in wind speed and/or direction with height (vertical wind shear)



Fuel

- 4) Warm sea-surface temperatures (usually at least 80° F)



- 5) Unstable atmosphere (temperature goes down as you go up)



- 6) High atmospheric moisture content (relative humidity)



Disturbances

- **Tropical Waves**
 - About 70% of all Atlantic-basin formations
 - Most major hurricanes
- **Decaying cold fronts**
 - Formation often near Gulf of America and SE United States
 - Typically early or late-season storms
- **Non-tropical lows and thunderstorm complexes**
 - Often subtropical systems

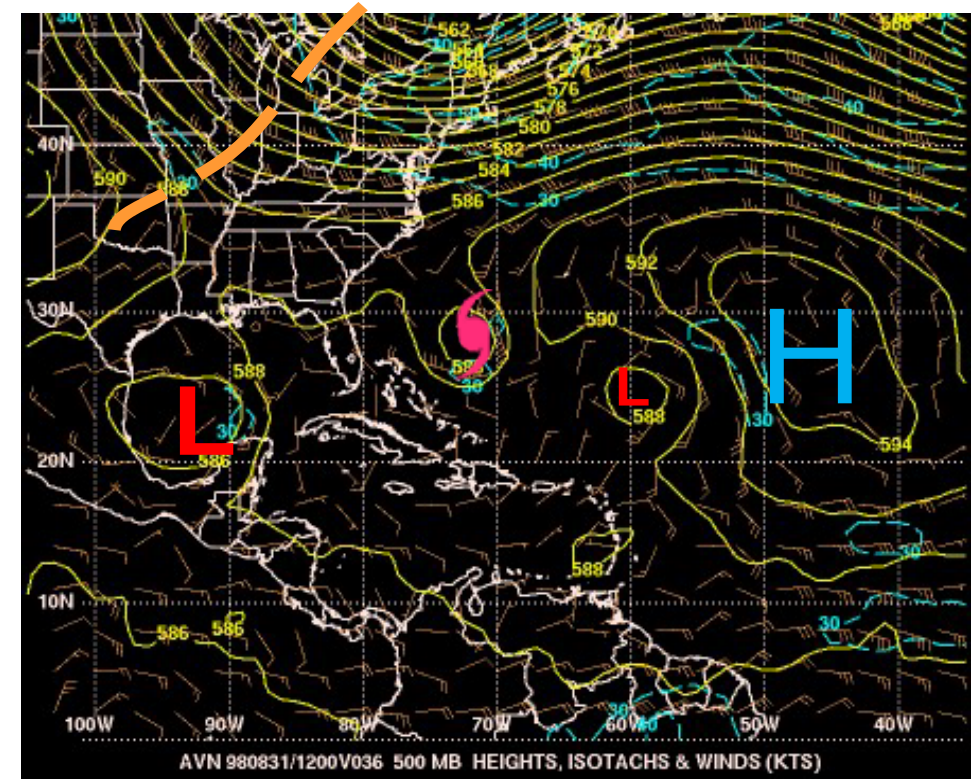
Storm Motion and Track



FEMA

Forecasting

- **Track forecast is usually controlled by large-scale weather features.**
 - “Cork-in-a-stream” analogy
- **Numerical computer models forecast track quite well.**
 - Constantly upgrading model physics and resolution
 - Long ago surpassed statistical models in accuracy



Intensity Factors

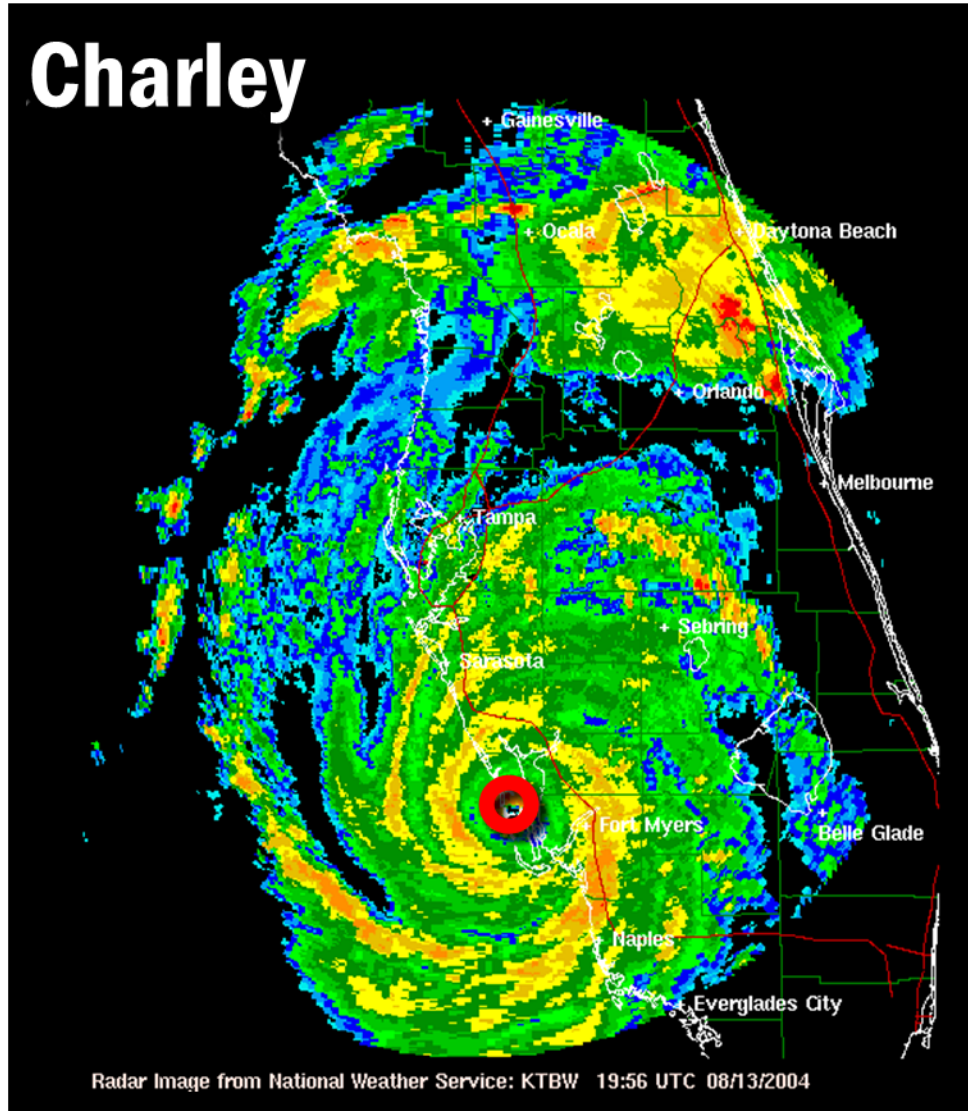
- **Upper-Ocean Temperatures**
More heat favors a stronger storm
- **Interaction with Land/Topography**
More land increases weakening
- **Vertical Wind Shear**
Shear limits strengthening
- **Moisture in Storm Environment**
Dry air can limit strengthening
- **Structural Changes, Eyewall Replacement**
Difficult to forecast and not straightforward
- **Interactions with Other Weather Systems**

Tropical Cyclones Come in All Sizes

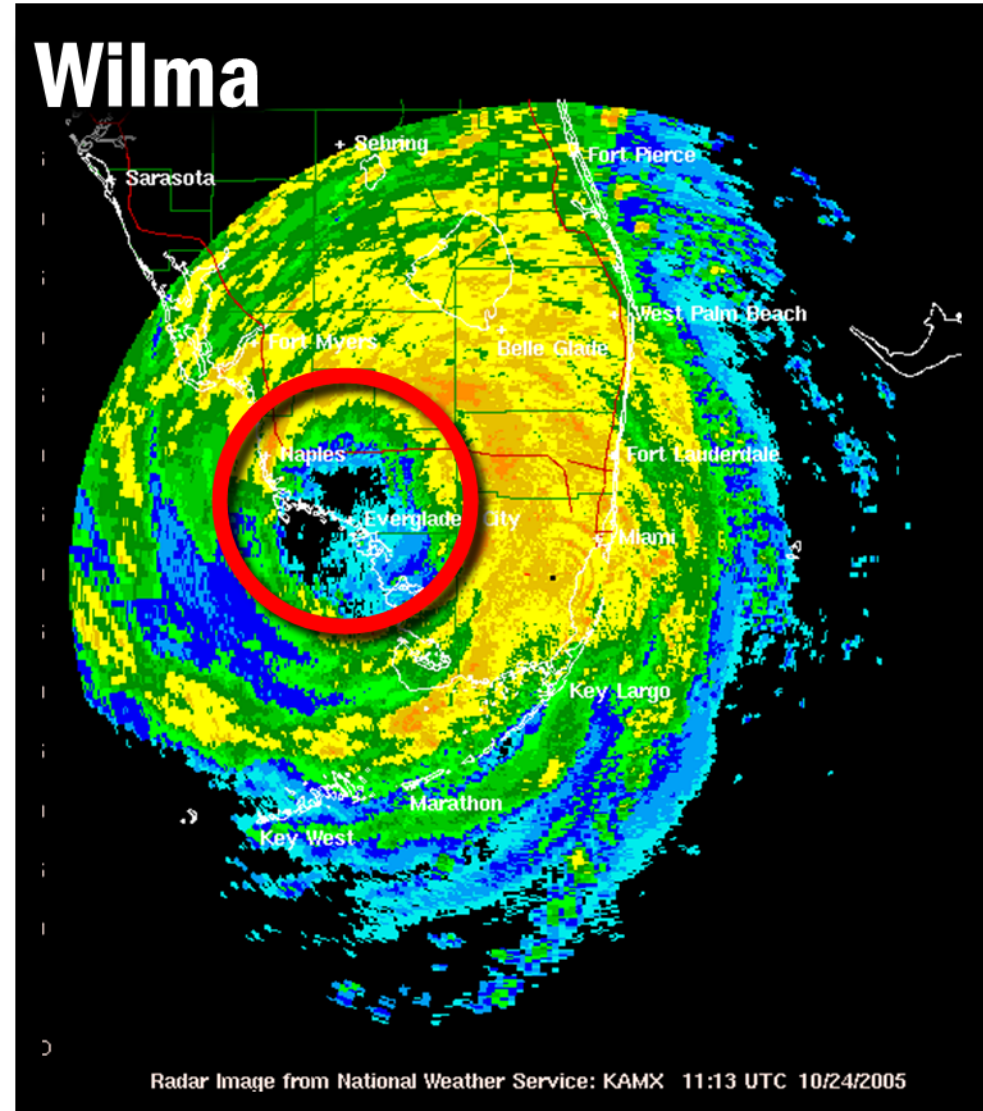


FEMA

Charley



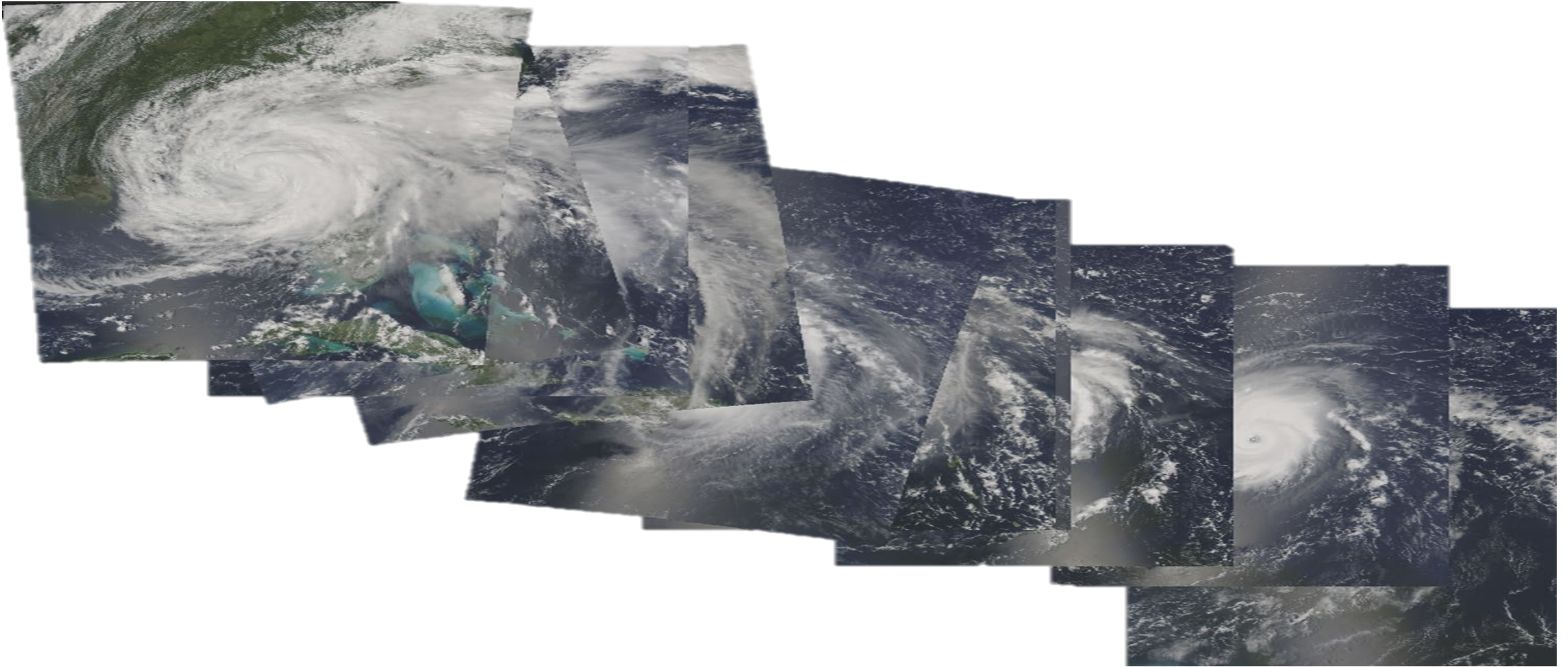
Wilma



Questions?



FEMA





Which hazard has the greatest potential for large loss of life?

- A. Wind
- B. Rain-induced flooding
- C. Tornadoes
- D. Storm Surge

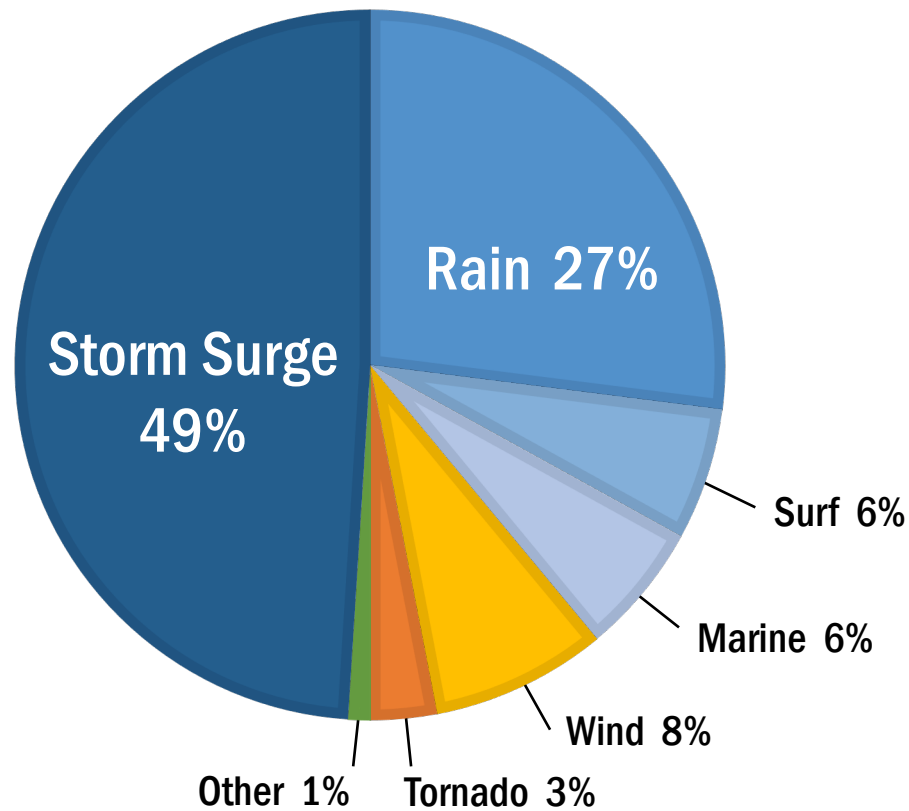
Atlantic Tropical Cyclone Deaths



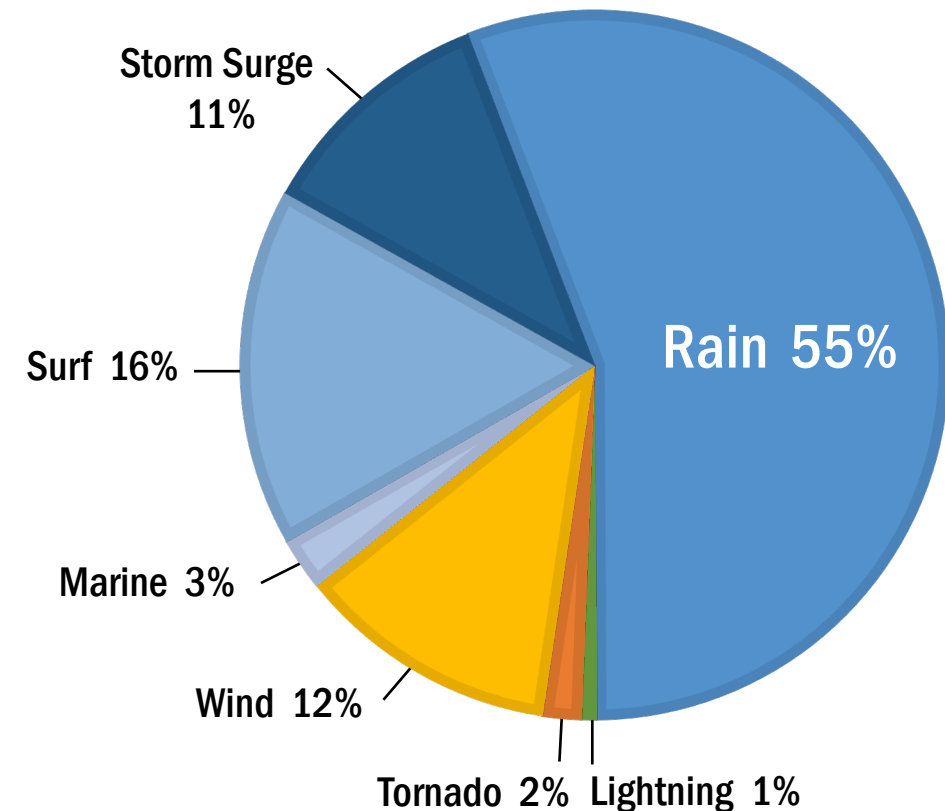
FEMA

U.S. Direct Fatalities

1963 to 2012



2013 to 2023



Hurricane Hazards



FEMA



Wind



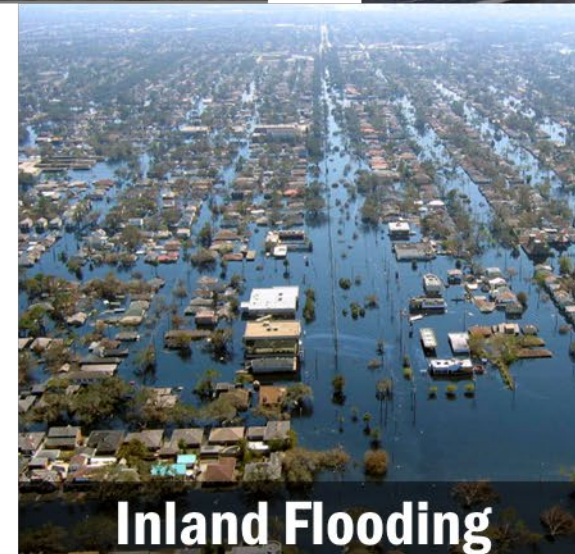
Waves / Rip Currents



Tornadoes



Storm Surge



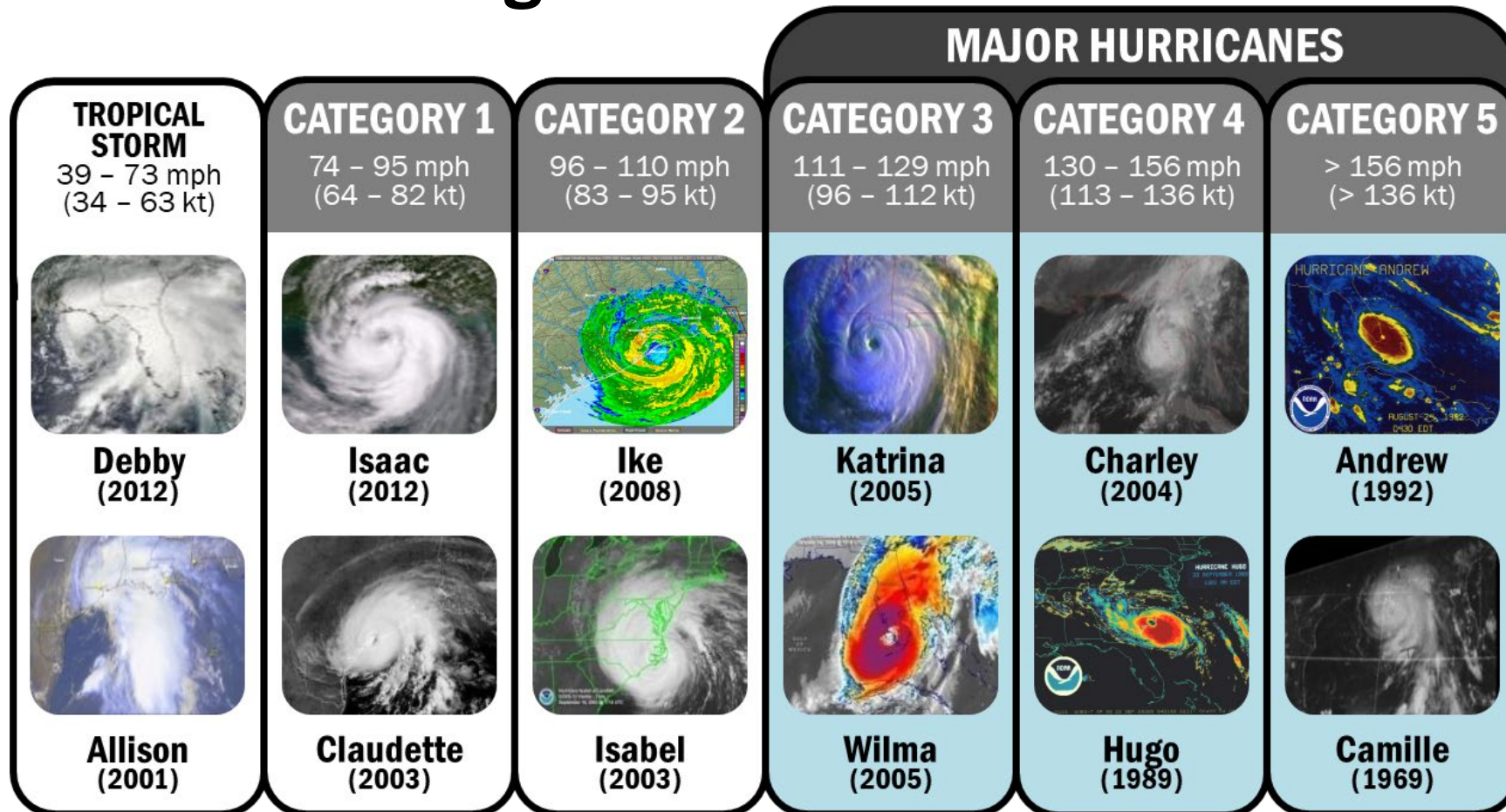
Inland Flooding

Saffir-Simpson Scale



FEMA

- Estimates Wind Damage



Category 1 (74–95 mph)



FEMA



Category 1

- **Some Damage**
 - Well-constructed frame homes could have roof damage.
 - Large tree branches will snap; shallow-rooted trees may topple.
 - Damage to power lines and poles; outages could last several days.

Category 2 (96–110 mph)



FEMA



Category 2

- **Extensive Damage**
 - Well-constructed frame homes could sustain major roof damage.
 - Many shallow-rooted trees will be snapped or uprooted.
 - Near total power loss is expected that could last several days.

Category 3 (111–129 mph)



FEMA



Category 3

- **Devastating Damage**

- Well-constructed frame homes may incur major damage.
- Many trees will be snapped or uprooted.
- Electricity and water will be unavailable for several days to weeks.

Category 4 (130–156 mph)



FEMA



Category 4

- **Catastrophic Damage**

- Well-constructed frame homes may sustain severe damage.
- Most trees will be snapped or uprooted; power poles downed.
- Power outages will last weeks to possibly months.

Category 5 (>156 mph)



FEMA



Category 5

- **Catastrophic Damage**

- A high percentage of framed homes will be destroyed.
- Fallen trees and power poles will isolate residential areas.
- Power outages will last weeks to possibly months.

Category 5 Landfalls – 5 Days Out



FEMA

Cat 5 Landfalls

- Labor Day (1935)
- Camille (1969)
- Andrew (1992)
- Michael (2018)

Where were these hurricanes
5 days before landfall?



Category 5 Landfalls – 3 Days Out



FEMA

Cat 5 Landfalls

- Labor Day (1935)
- Camille (1969)
- Andrew (1992)
- Michael (2018)

Where were these hurricanes
3 days before landfall?



Storm Surge



Hurricane Sandy (2012)

72 deaths

\$86 billion damage (2023 USD)



Hurricane Katrina (2005)

520 deaths

\$195 billion damage (2023 USD)



Hurricane Ian (2022)

66 deaths

\$115 billion damage (2023 USD)

Storm Surge Definitions



FEMA

Storm Surge

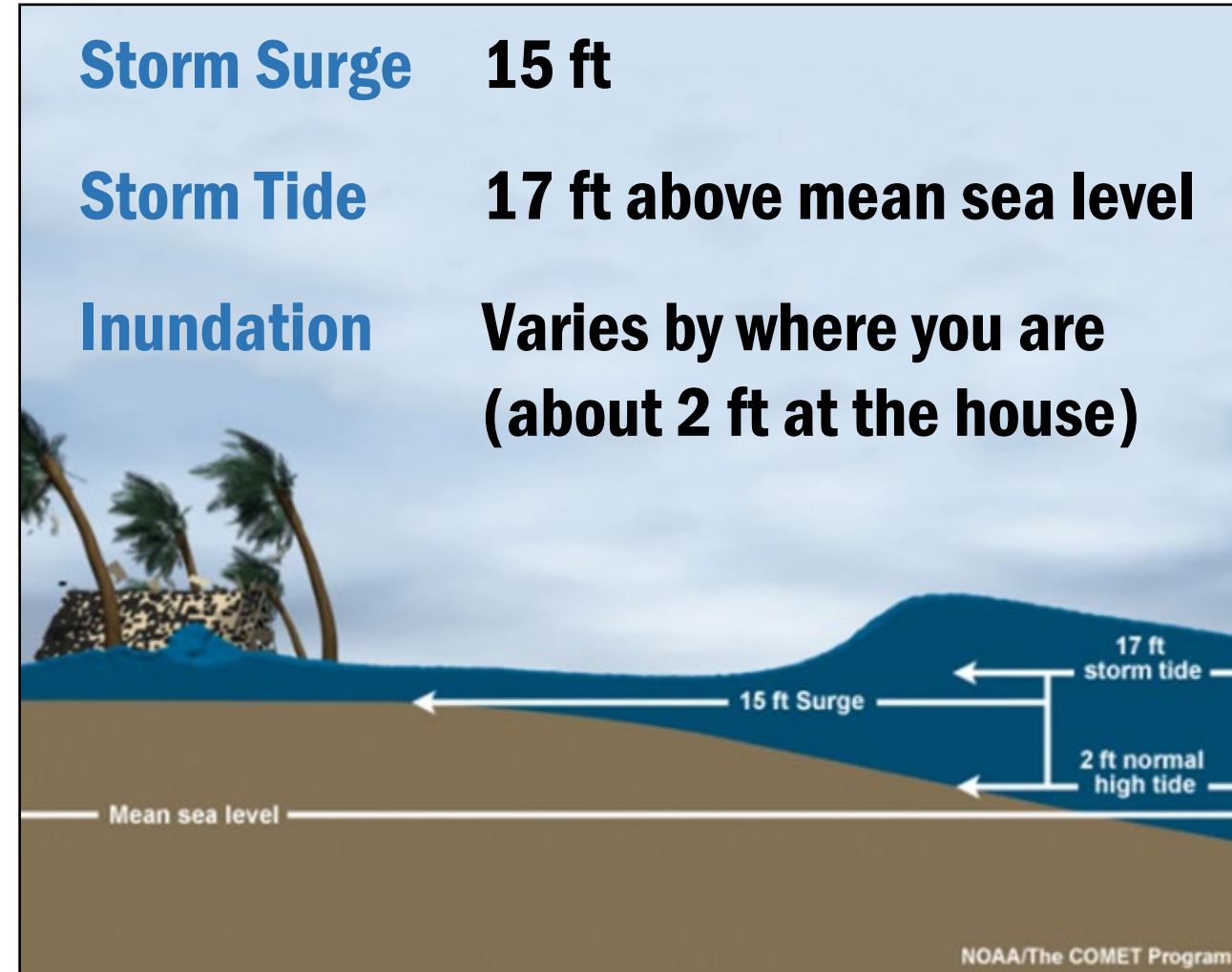
An abnormal rise of water generated by a storm, over and above the predicted astronomical tide.

Storm Tide

Water level due to the combination of storm surge and the astronomical tide.

Inundation

The flooding of normally dry land, resulting from storm tide and possibly other factors.



Storm Surge: Katrina 2005



FEMA



Waveland,
Mississippi

Kimberly and David King

Storm Surge: Ian 2022



FEMA



10:38 AM

Credit: Max Olson

Storm Surge: Gulf Coast



FEMA

Hurricane Zeta (2020)
Biloxi, Mississippi



Hurricane Laura (2020)
Cameron, Louisiana



Hurricane Michael (2018)
Mexico Beach, Florida



Hurricane Hanna (2020)
Corpus Christi, Texas



Storm Surge: Southeast



FEMA



Storm Surge: Mid-Atlantic



FEMA



Storm Surge: New England



FEMA

Hurricane Carol (1954)
Groton, Connecticut



Hurricane Irene (2011)



1938 Hurricane
Providence, Rhode Island



Hurricane Sandy (2012)
Matunuck, Rhode Island

Where Does Storm Surge Occur?



FEMA





Which are important factors in determining how much storm surge could occur for a storm?

- A. Size of the storm
- B. Forward speed of the storm
- C. Intensity
- D. All of the above

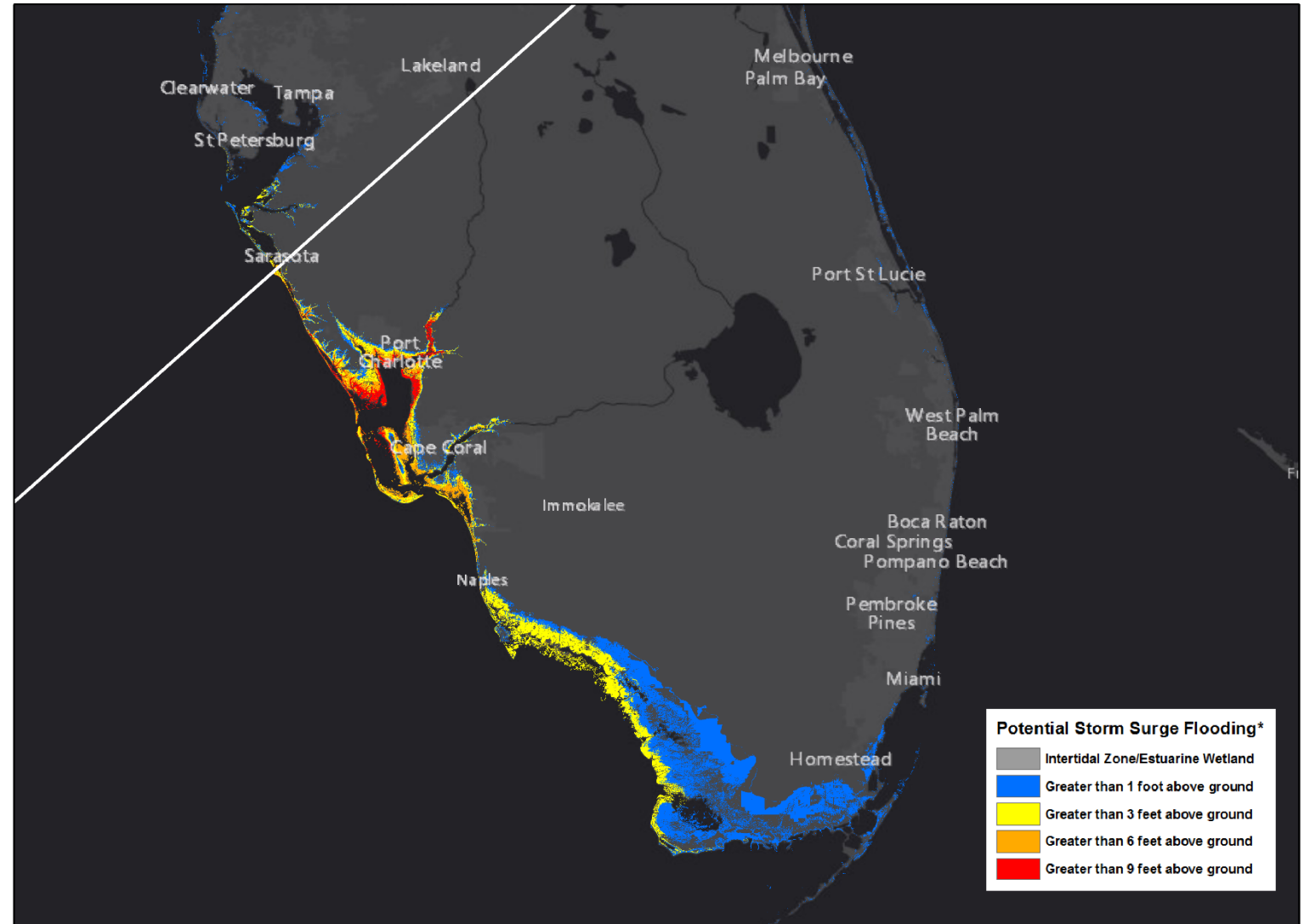
Storm Surge Factors

- **Intensity**
Stronger storm = More storm surge
- **Size (Radius of Maximum Winds)**
Larger storm = More storm surge
- **Forward Speed**
Slower storm = Storm surge farther inland
- **Angle of Approach**
Alters focus of storm surge
- **Width and Slope of Shelf (Bathymetry)**
Gradual shelf = More storm surge

Effect of Storm intensity

Storm Intensity

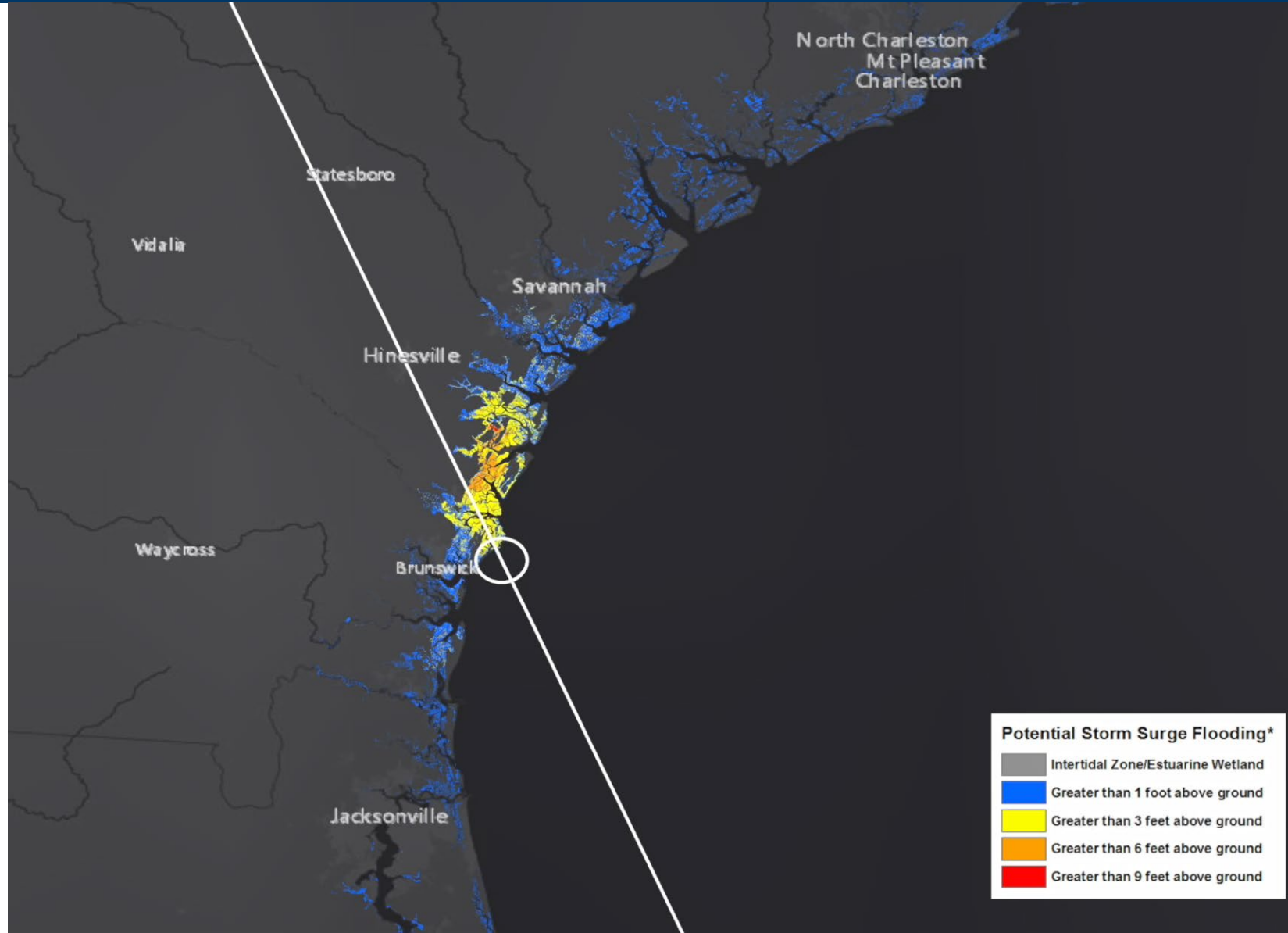
- **Category 3**



Effect of Storm Size



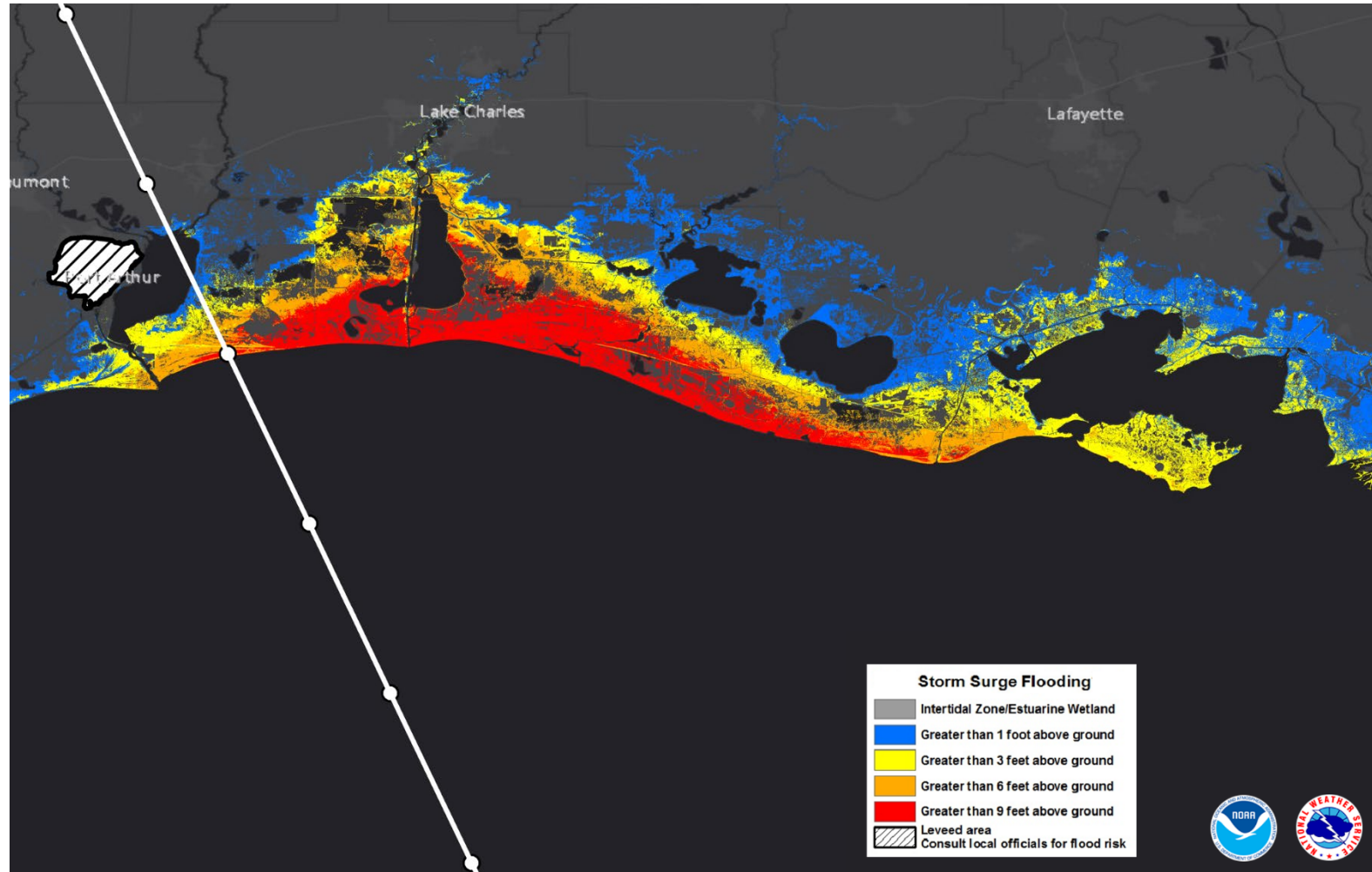
FEMA



Effect of Forward Speed

Forward Speed

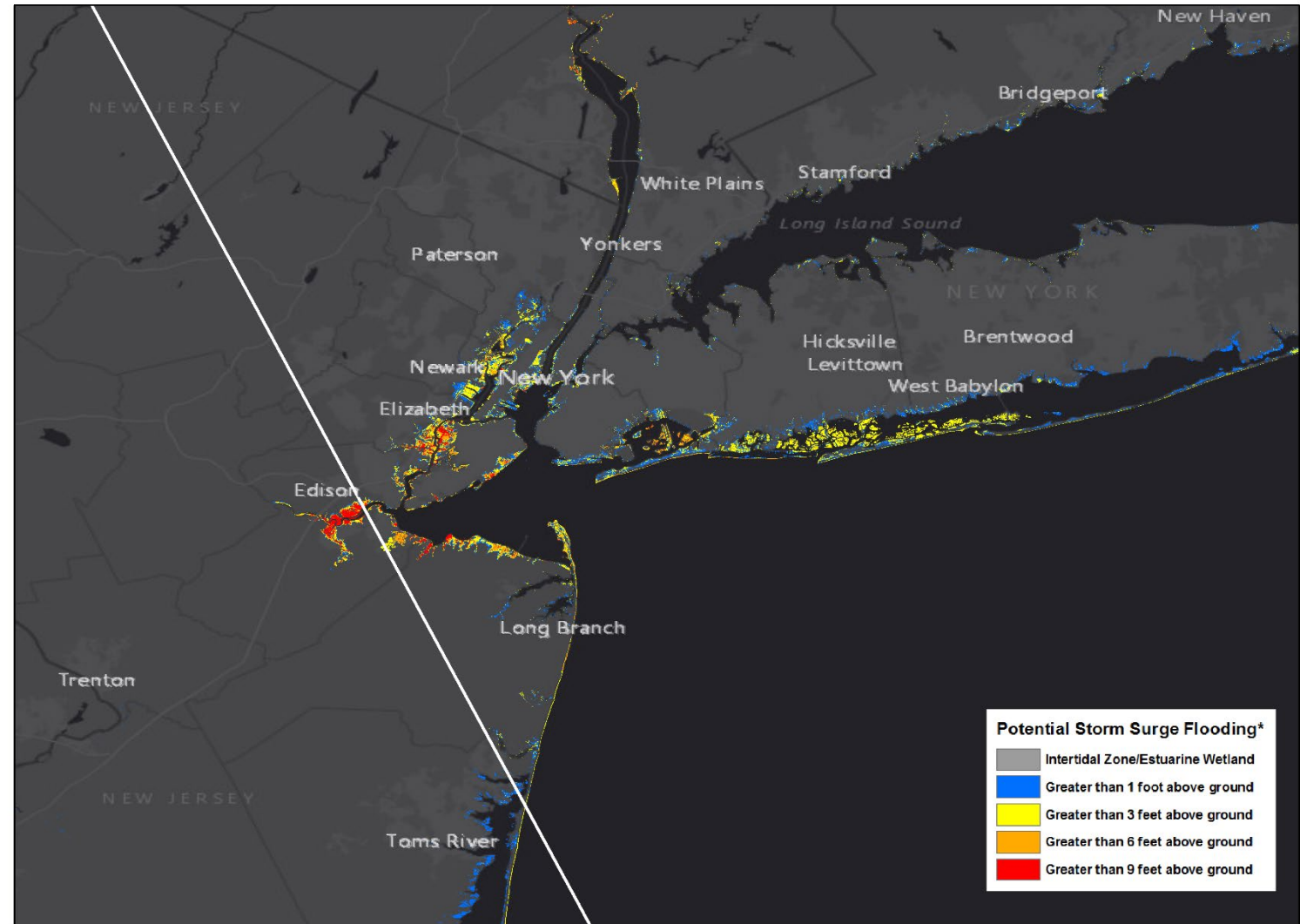
- **5 mph**
(Slower Storm)
- **Slower Storms**
Farther inland penetration



Effect of Angle of Approach

Angle of Approach

- **NNW**



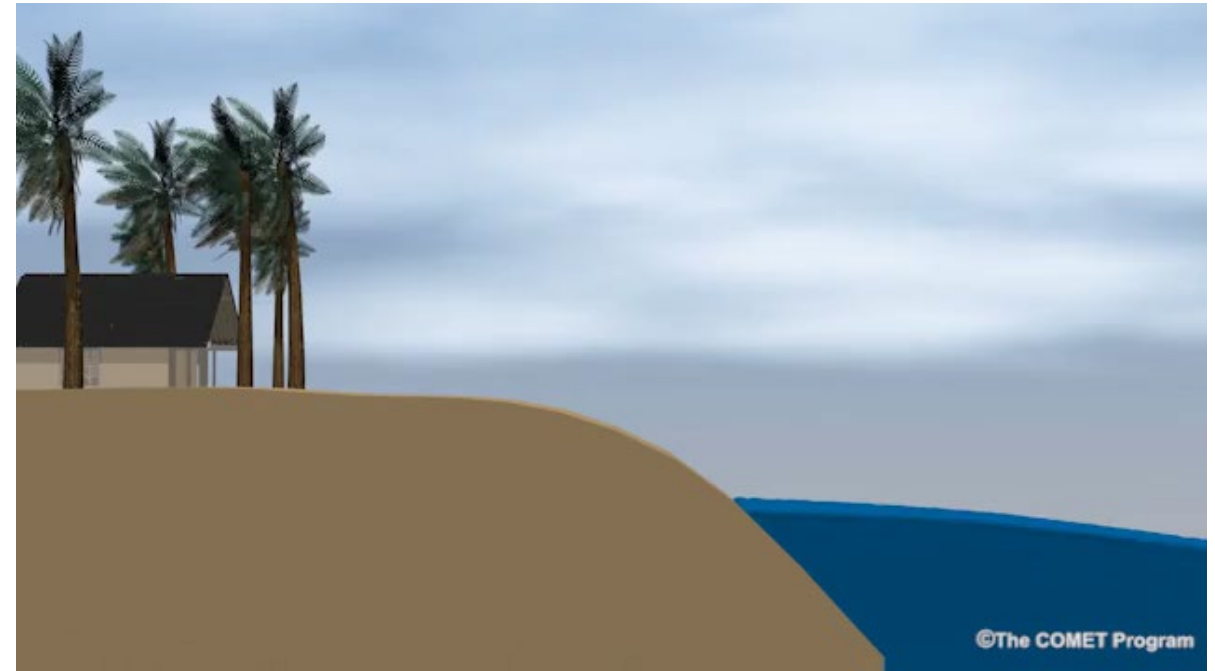
Effect of Width/Slope of Shelf



FEMA



Wide shelf – Gentle slope

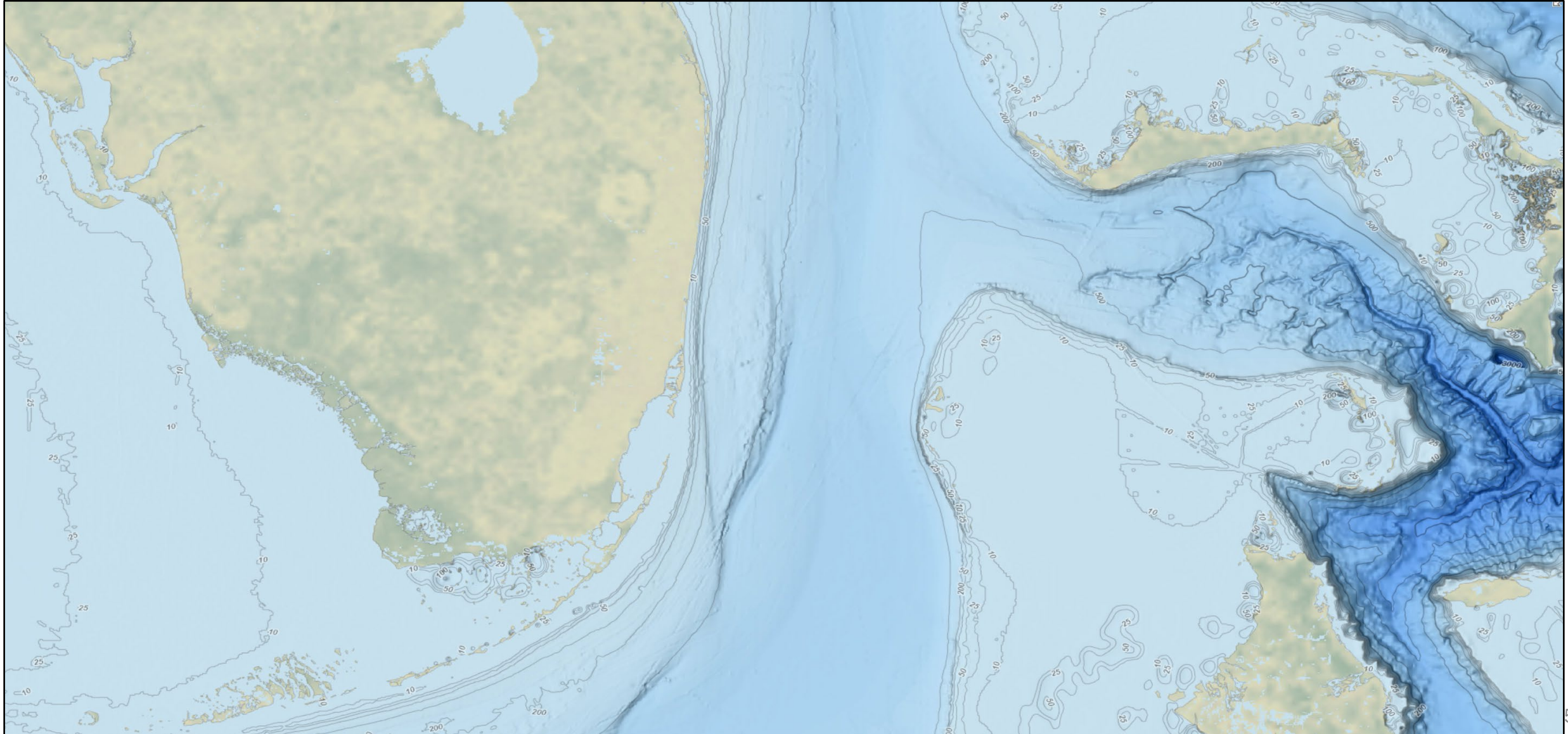


Narrow shelf – Sharp slope

Effect of Width/Slope of Shelf – FL



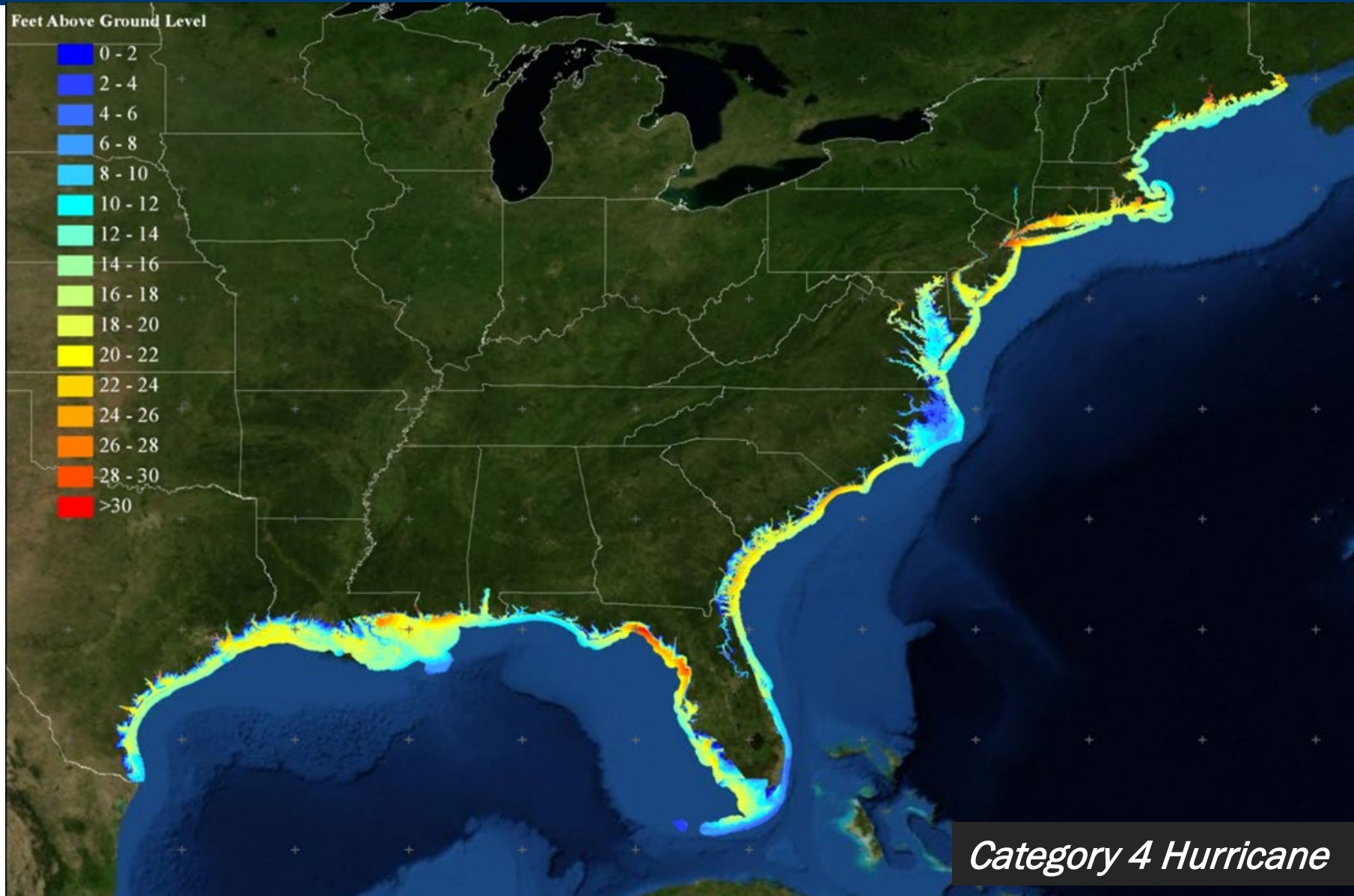
FEMA



Location, Location, Location.



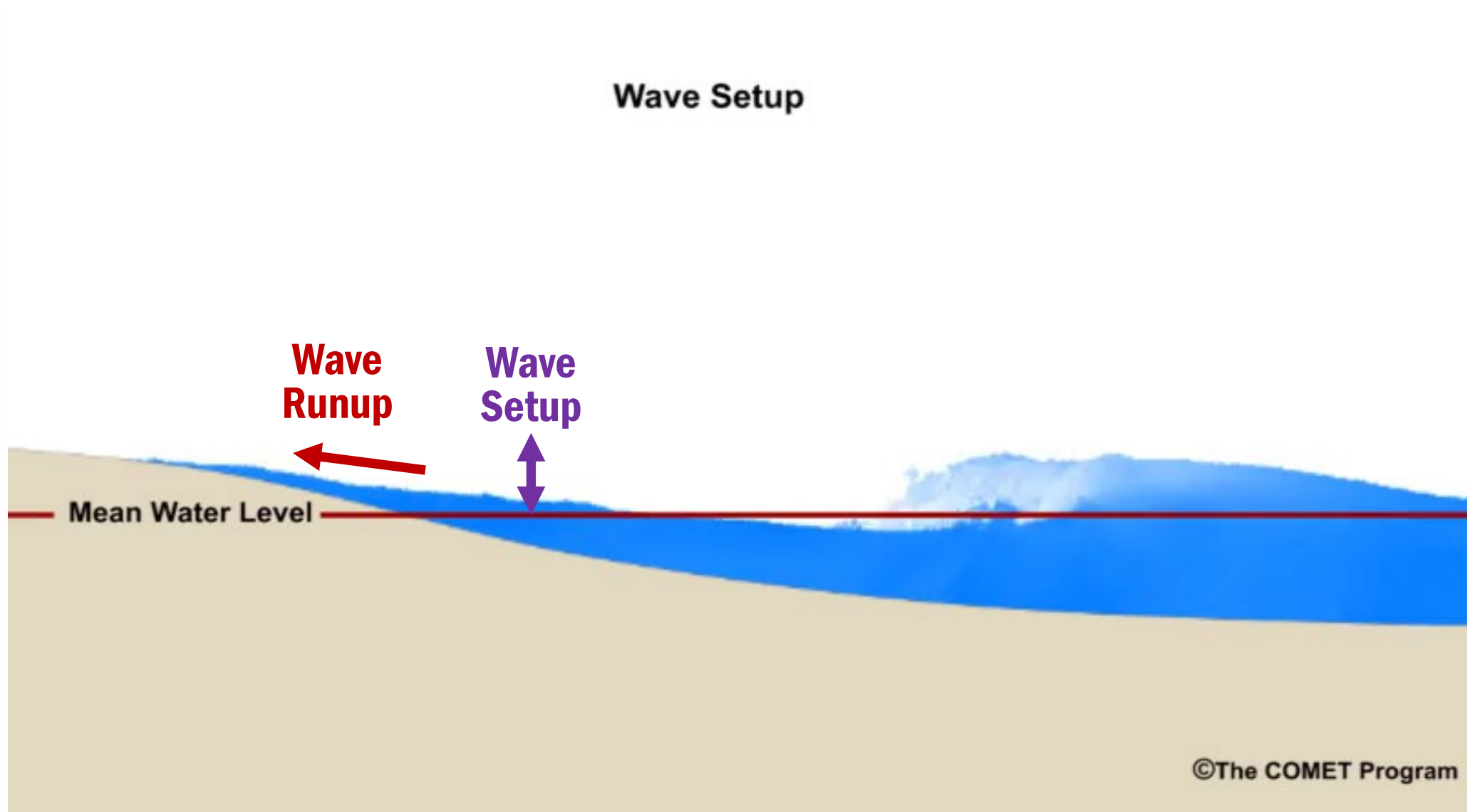
FEMA



Wave Setup



FEMA

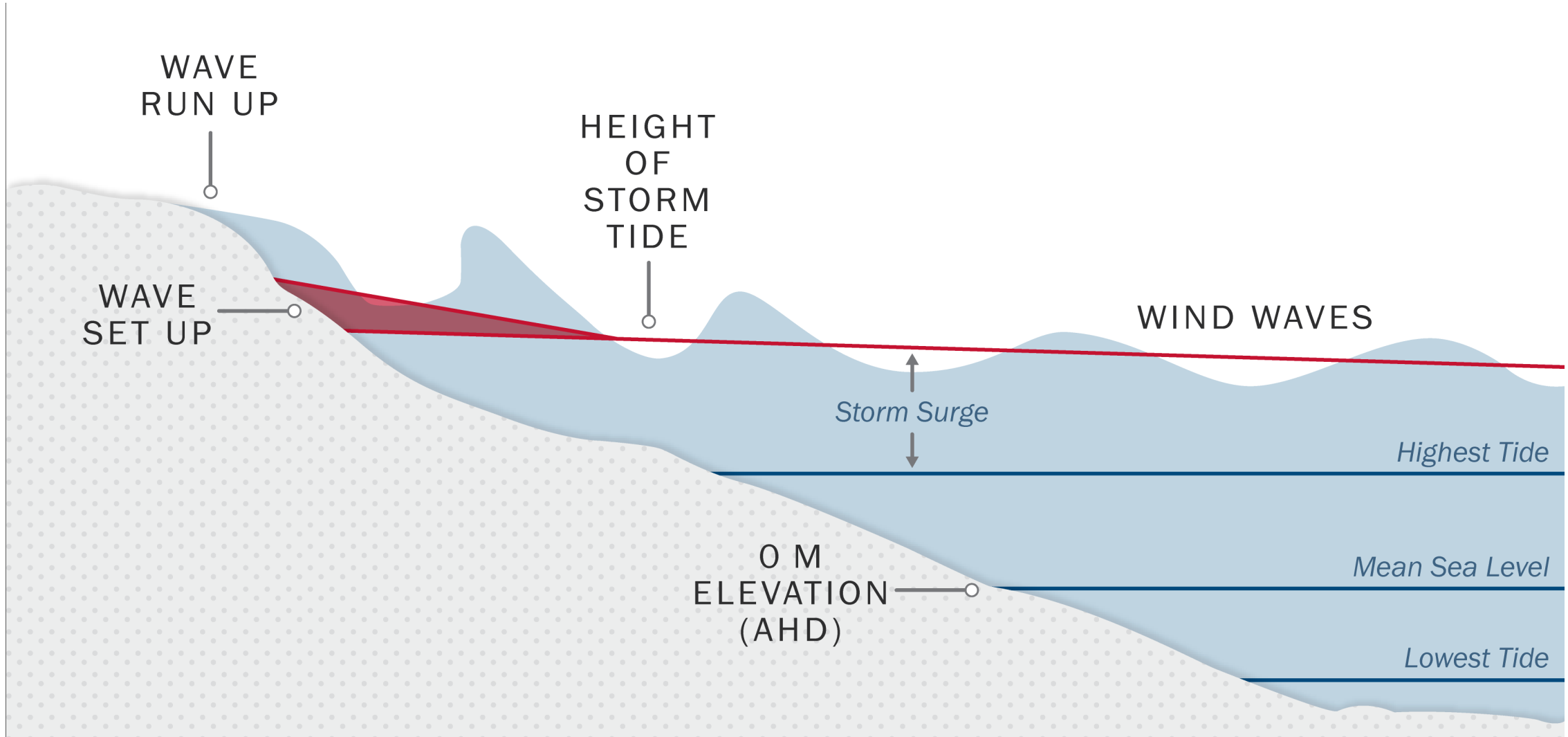


Components of Total Water Level



FEMA

Total Water = Storm Surge + Tides + Wave Setup + Freshwater



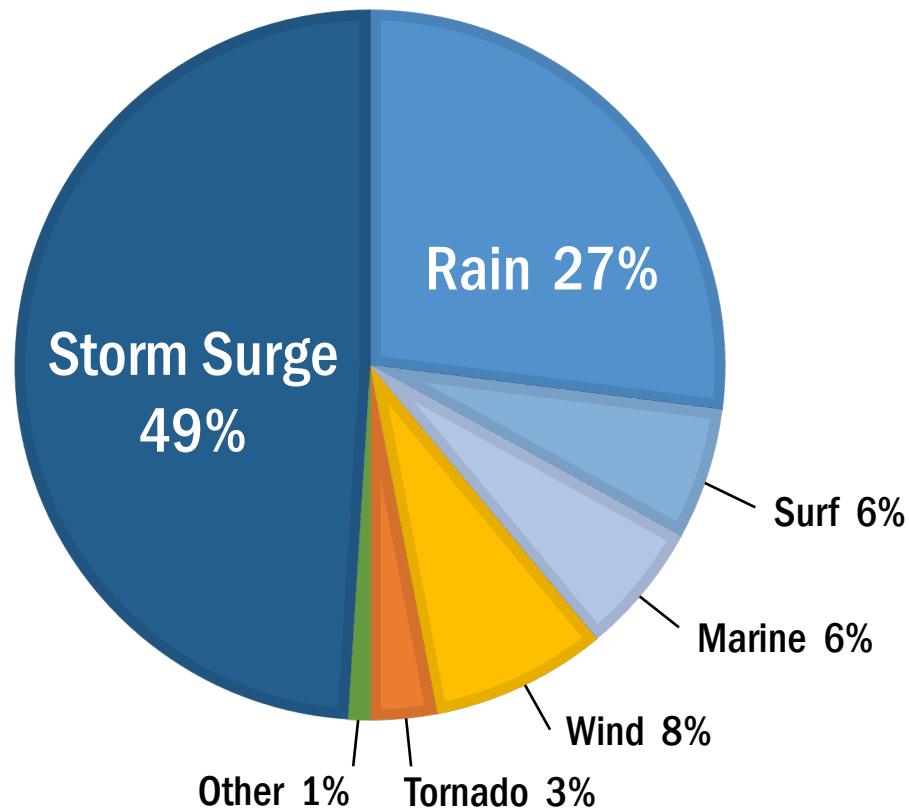
Atlantic Tropical Cyclone Deaths 2



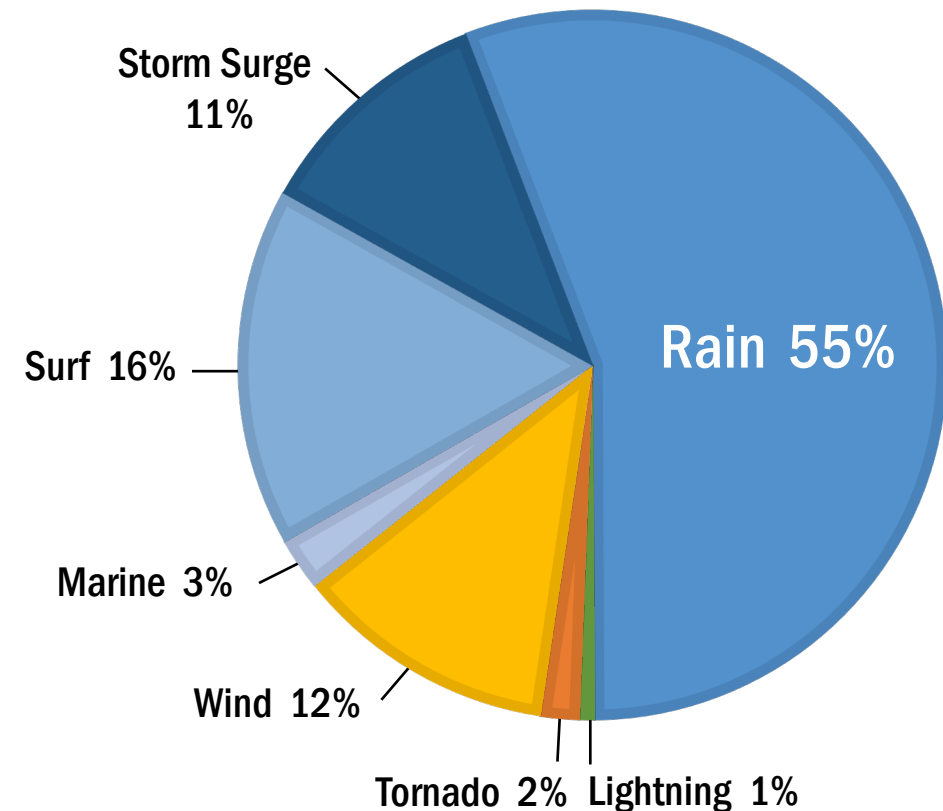
FEMA

U.S. Direct Fatalities

1963 to 2012



2013 to 2023



Flash Floods. Riverine Flooding.



FEMA



Times Herald



Mansfield Heliflight



Reuters



US Army Corps of Engineers

Tropical Storm Allison (2001) I-10



FEMA

Interstate 10 – West View



Hurricane Harvey (2017) Flooding 1



FEMA



Hurricane Harvey (2017) Flooding 2



FEMA



Hurricane Irene (2011) Flooding 1



FEMA

Photo courtesy of L. Gange, Mansfield Helifight



Prattsville, NY Damage (Jimmy Vielkind/Times Union)

Hurricane Irene (2011) Flooding 2



FEMA

Rochester, VT Flash Flooding



Gilboa Dam – Significant scouring & erosion

Rainfall Factors

- **Forward Speed**
Slower storm = More rainfall
- **Size**
Larger storm = More rainfall
- **Topography / Mountains**
More rain on windward side
- **Fronts / Upper-level troughs**
Enhance rainfall
- **Storm Track**
Alters geographic focus of rainfall

Tropical Storm Alberto (2006)



FEMA

COOLER & STABLE
Land - Based Airmass

HEAVY RAIN

WARM & UNSTABLE
Tropical Airmass

TRACK

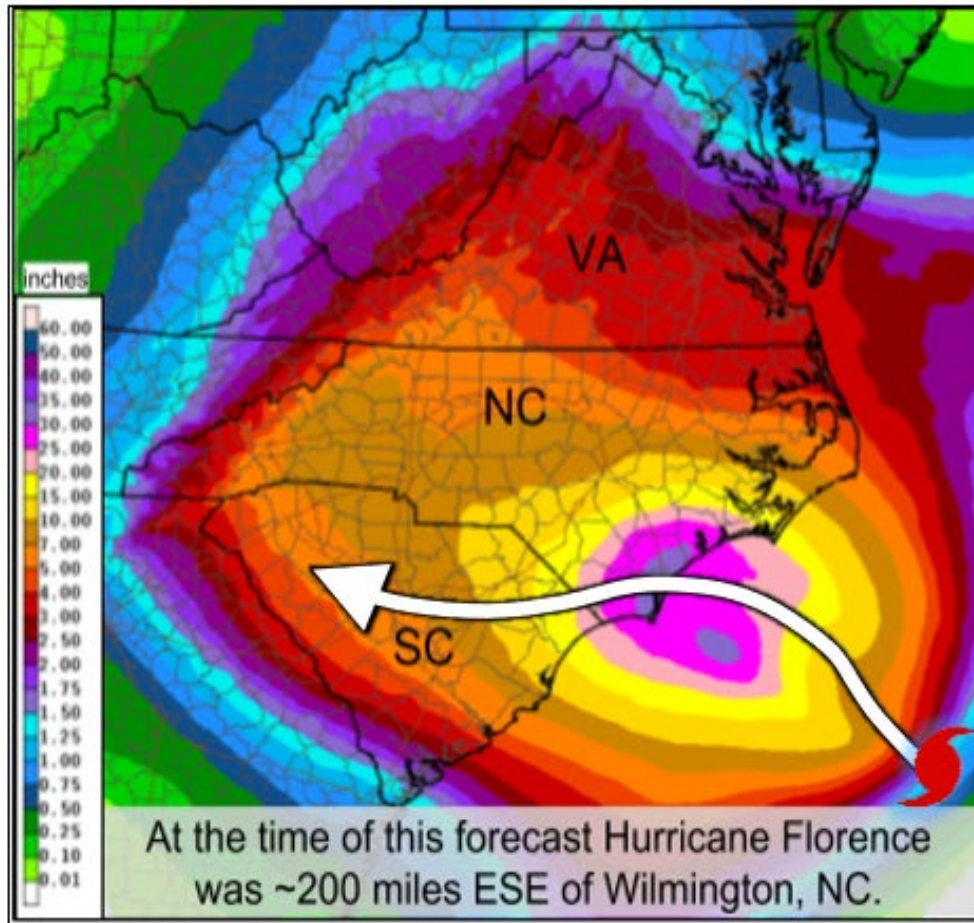
Data analysis - Phillip Badgett
Graphic - Jonathan Blaes
FWS Raleigh, NC
jov/rah

Hurricane Florence (2018)

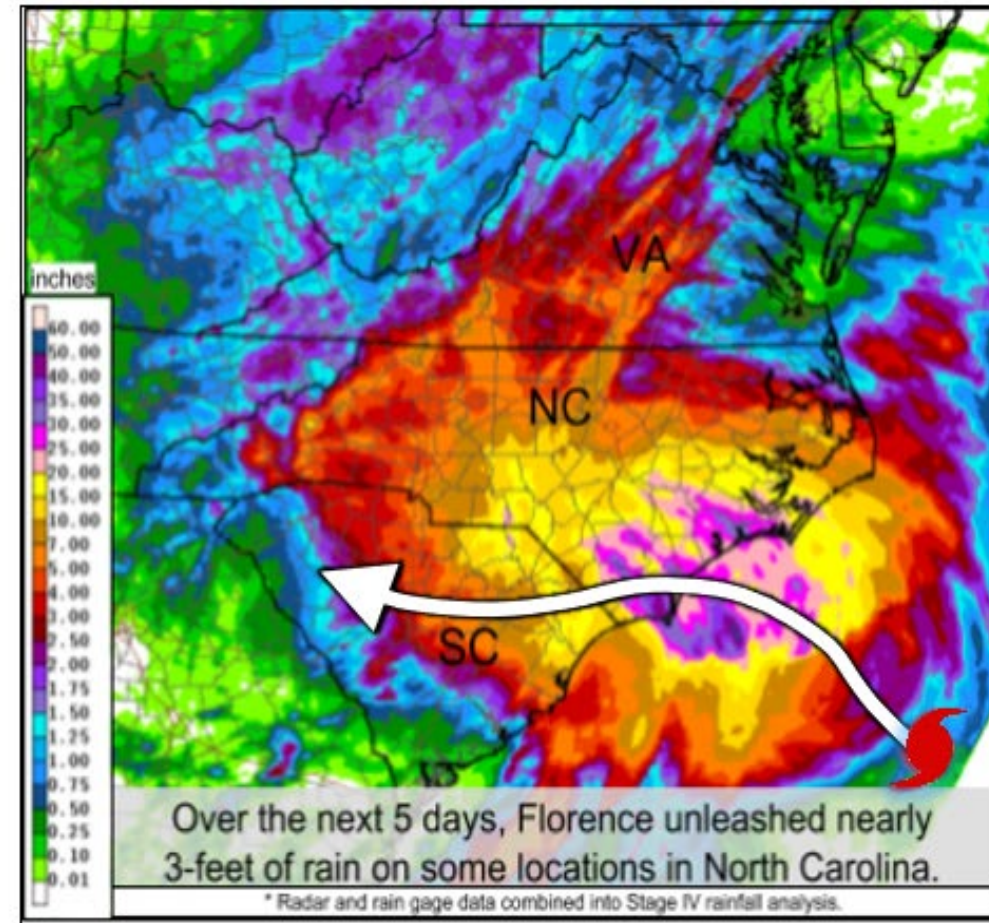


FEMA

5-Day Forecast vs. Observed Rainfall



5-day Rainfall Forecast – Issued Sep 13, 2018

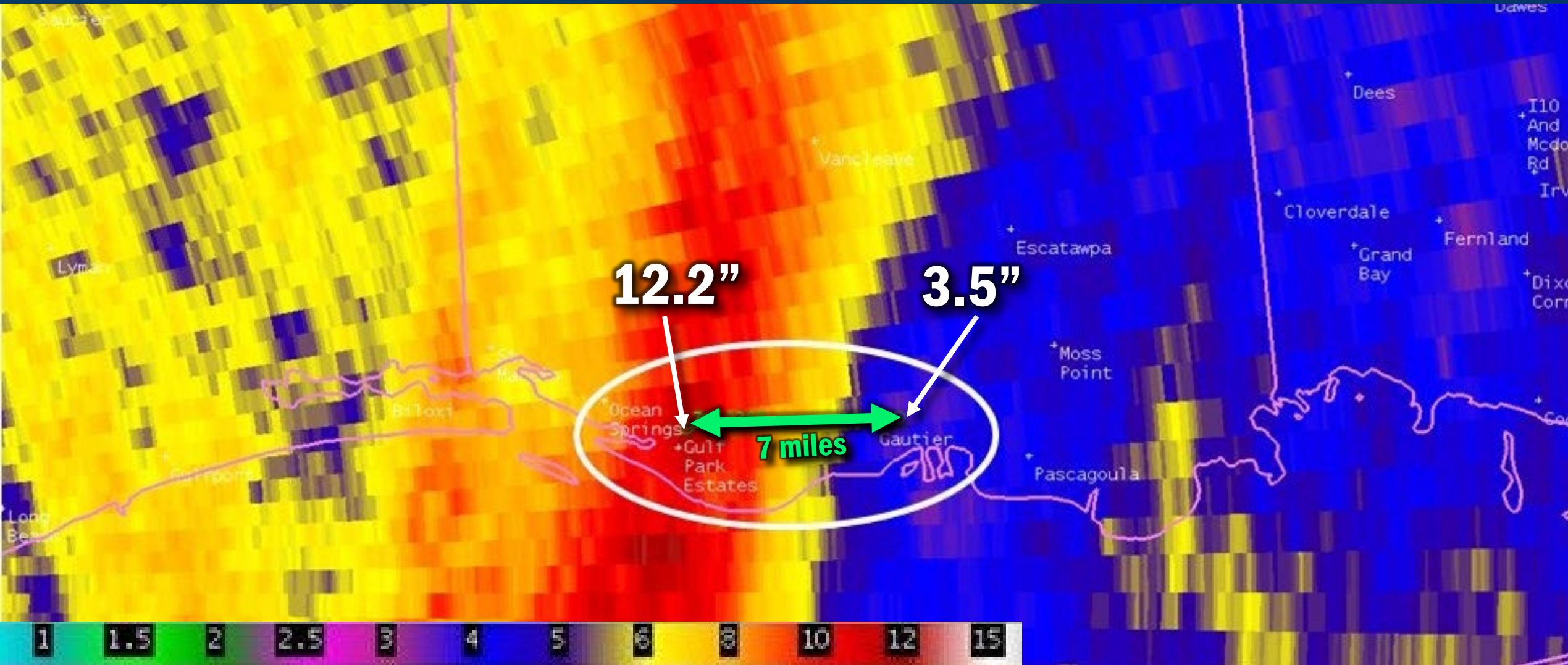


5-day Rainfall – Sep 13-18, 2018

Tropical Storm Cindy (2017)



FEMA



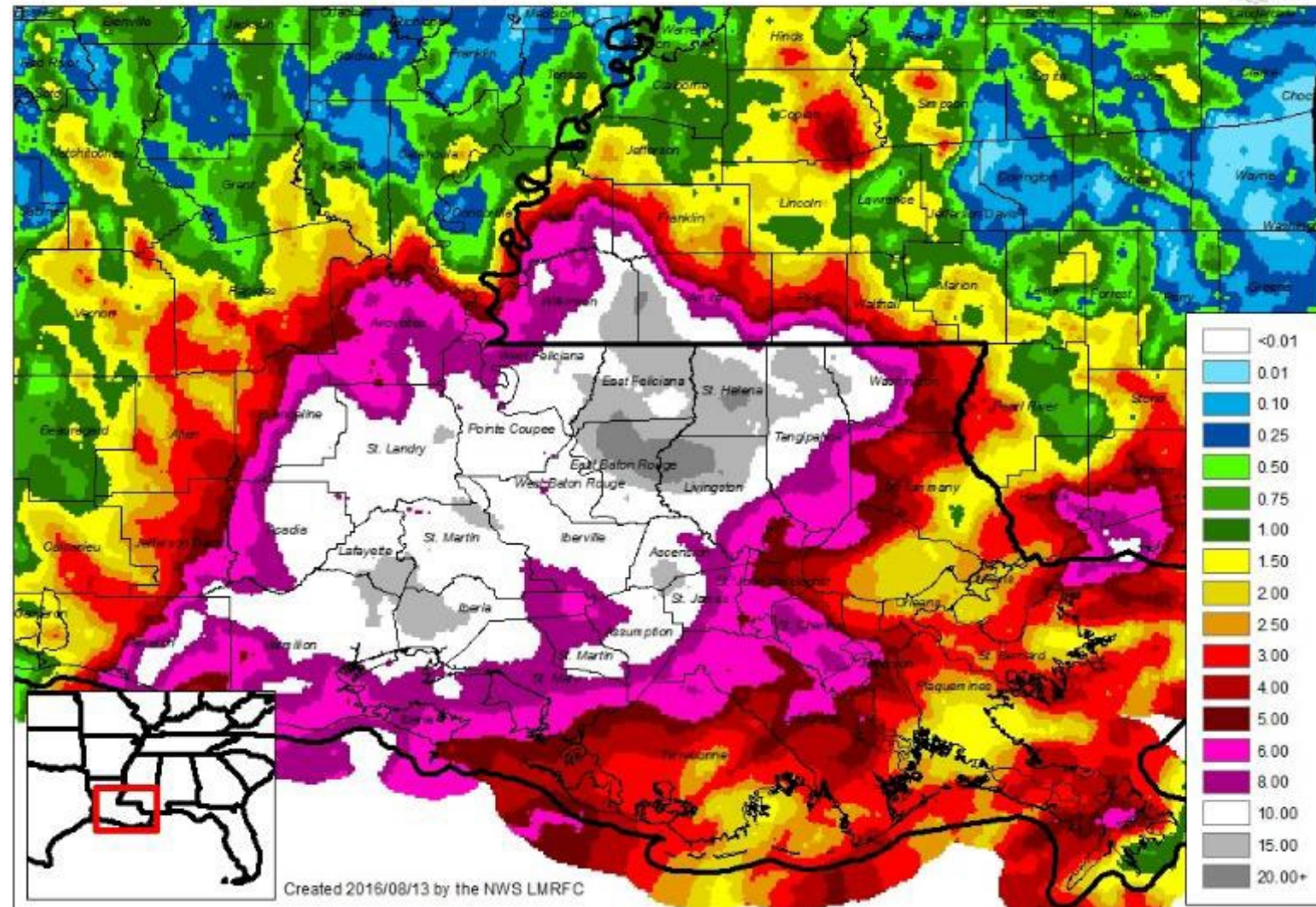
Unnamed Low (2016)



FEMA

Best-Estimate Rainfall

2 day rainfall estimate ending August 13, 2016.

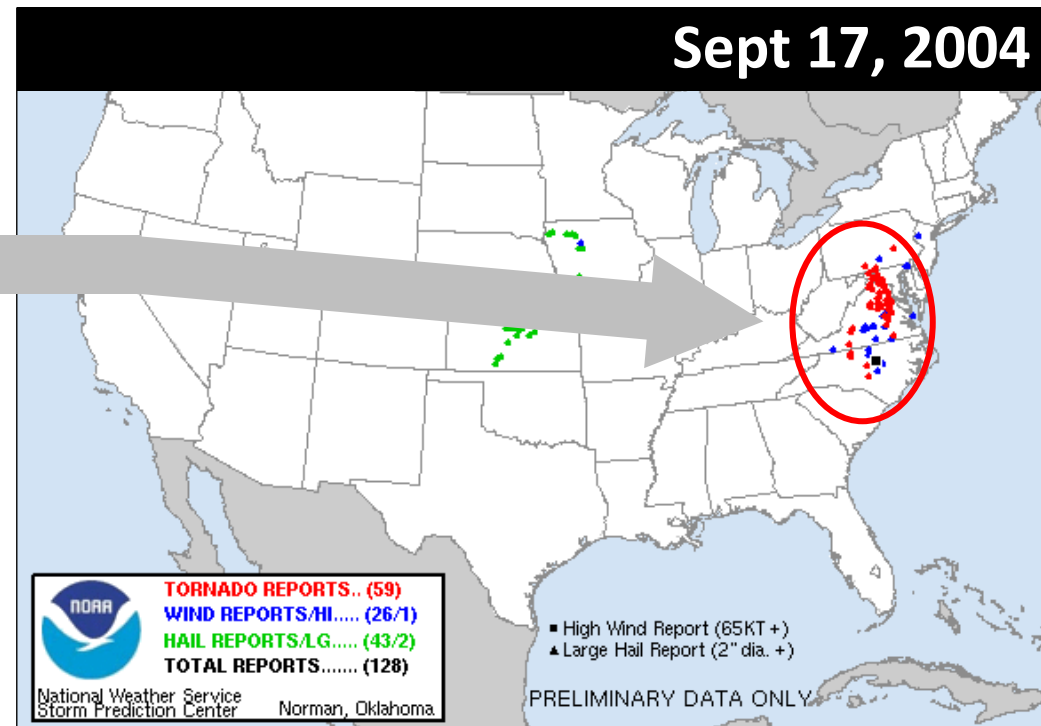


Landfalling Hurricanes

- **70% produce at least one tornado.**
- **40% produce more than three.**

Tornado “outbreak”

Hurricane Ivan (2004)
– 117 Tornadoes



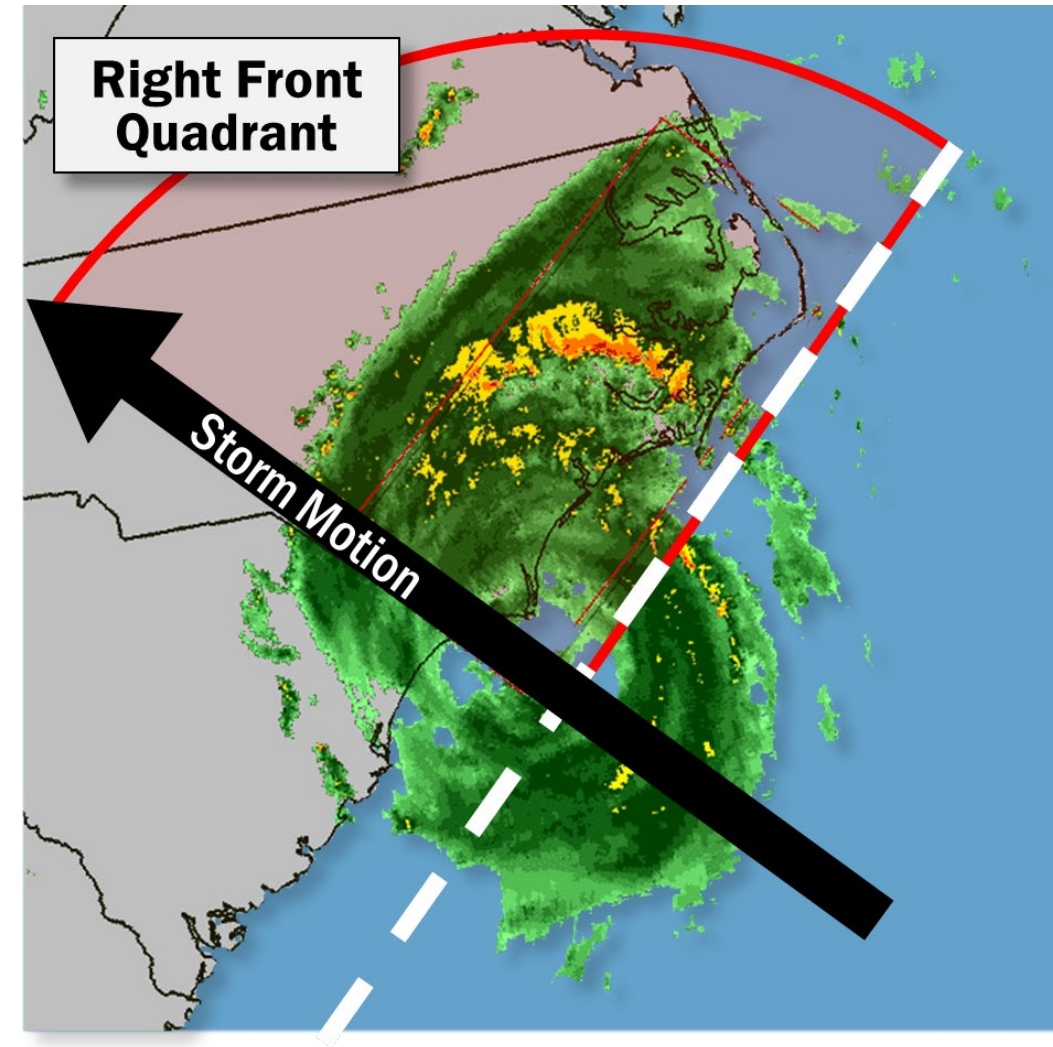
Where Do Tornadoes Form?



FEMA

Tornadoes in Hurricanes

- **Right-front quadrant**
Friction over land creates favorable conditions.
- **Outer rainbands**
Generally, form farther from the center – and the tornado potential continues after landfall.
- **Smaller and short-lived**
Tend to be less intense than those that occur in the Great Plains; however, some large or strong tornadoes have occurred.



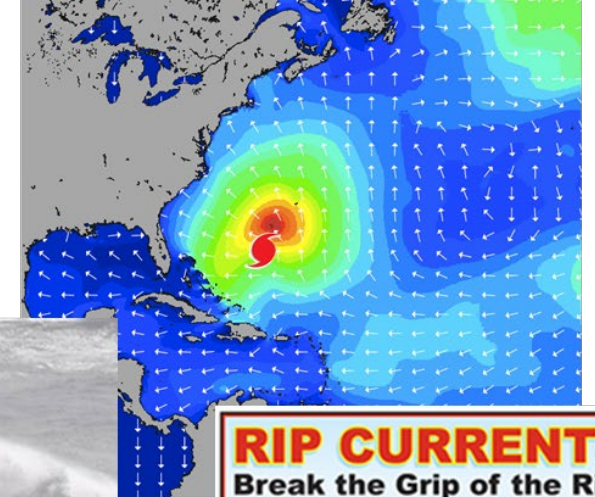
Waves and Rip Currents



FEMA

Waves and Rip Currents

- **Swells from a large hurricane can affect beaches of the entire western Atlantic.**
- **Hurricane Lorenzo (2019)**
 - 8 people drowned along the U.S. East Coast in rip currents and hazardous surf.
- **Hurricane Delta (2020)**
 - 2 people drowned along the NW Florida coast.



Questions/Comments?



FEMA

