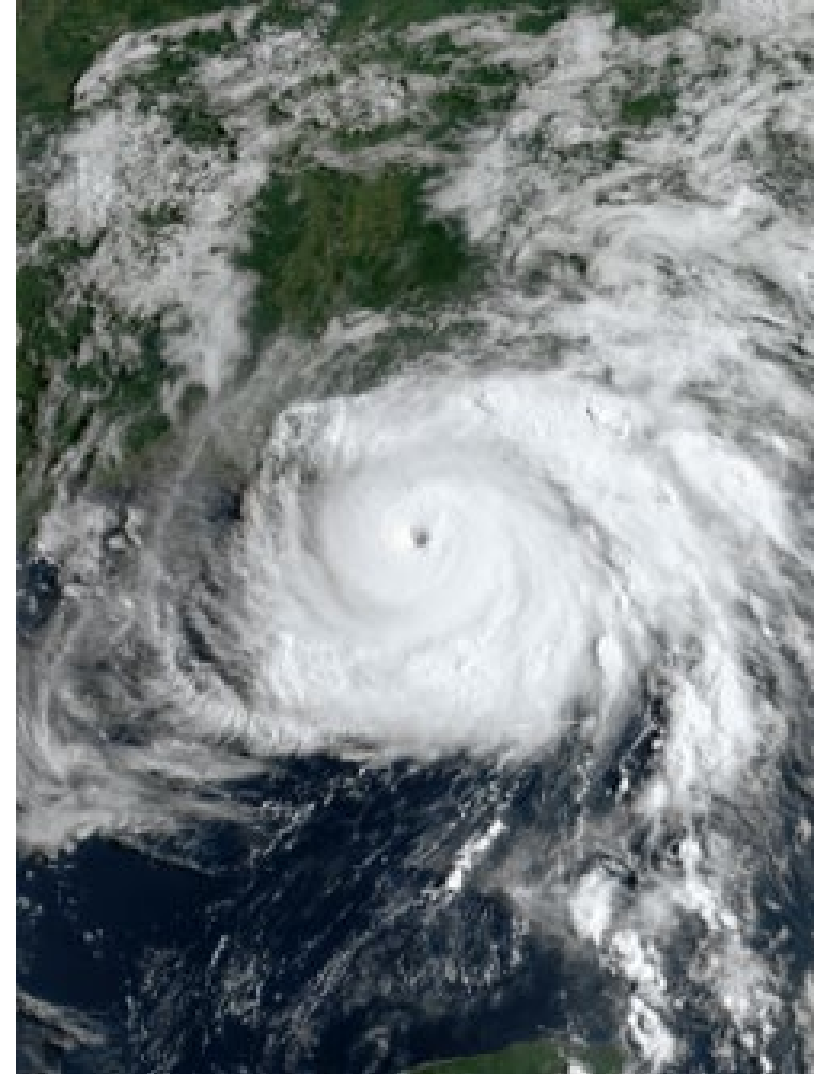


K0311

Hurricane Readiness for Coastal Communities



Ground Rules

- **Attendance and Participation**
 - All mics are muted
 - Use the Q&A box for questions
- **Breaks**
 - Return calls during breaks
 - Return from breaks on time.



Administrative Details

- **Online NETC-NDEMU Application**
 - Replaces paper application.
 - Student Identification (SID) Number required.
 - Link: <https://training.fema.gov/generaladmissionsapplication/>
 - K0311 Course Code: SL05M
- **NDEMU Course Evaluation Form Will be Emailed to Participants Registered for Course at Link Above**
- **NDEMU Certificate and CEUs**
 - Must attend the entire course.
 - Submit an online application form.
 - Submit a course evaluation form.

Online NETC-NDEMU Application

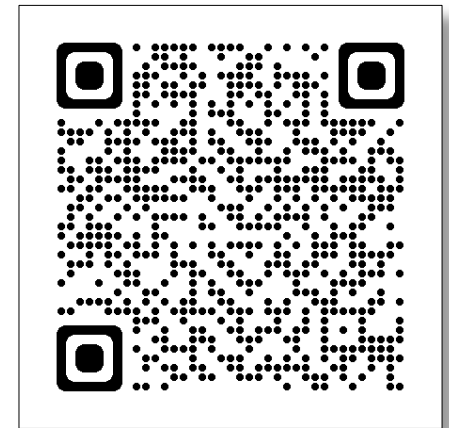


Training Application

- **NDEMU now uses an Online Training Application.**
 - National Emergency Training Center (NETC) – General Admissions Application
 - Students **must** submit their online application within **14 days of class completion to get NDEMU credit.**
 - <https://training.fema.gov/generaladmissionsapplication/>
 - K0311 Course Code: SL05M
- **Student Identification (SID) Number is required to register for this training and any FEMA course.**
 - <https://cdp.dhs.gov/femasid>



NETC Application



Student ID Number

NDEMU Course Evaluation Form



FEMA

Evaluations

- Complete by the end of class.
- Rate topics and instructors.
 - From 1 (lowest) to 5 (highest)
- Write in comments to improve the training!
- Will be sent to participants registered for the course on NDEMU's website.

The image shows a detailed course evaluation form from FEMA. The form is titled 'NATIONAL EMERGENCY TRAINING CENTER EMERGENCY MANAGEMENT INSTITUTE COURSE EVALUATION FORM'. It includes a header with 'FEMA' and the FEMA logo. The form is divided into several sections: 'PARTICIPANT PROFILE', 'COURSE ASSESSMENT', and 'COMMENTS'. The 'PARTICIPANT PROFILE' section includes fields for course title, location, manager, sex, age, work organization, and emergency management role. The 'COURSE ASSESSMENT' section includes a table for rating various aspects of the course, such as printed material, audio-visual materials, instruction, classroom, and course, with a scale from 1 (lowest) to 5 (highest). The table has columns for 'STRONGLY DISAGREE', 'DISAGREE', 'NEUTRAL', 'AGREE', 'STRONGLY AGREE', and 'NOT APPLICABLE'. The form also includes a section for 'COMMENTS' and a footer with 'FEMA Form 95-41, DEC 92'.

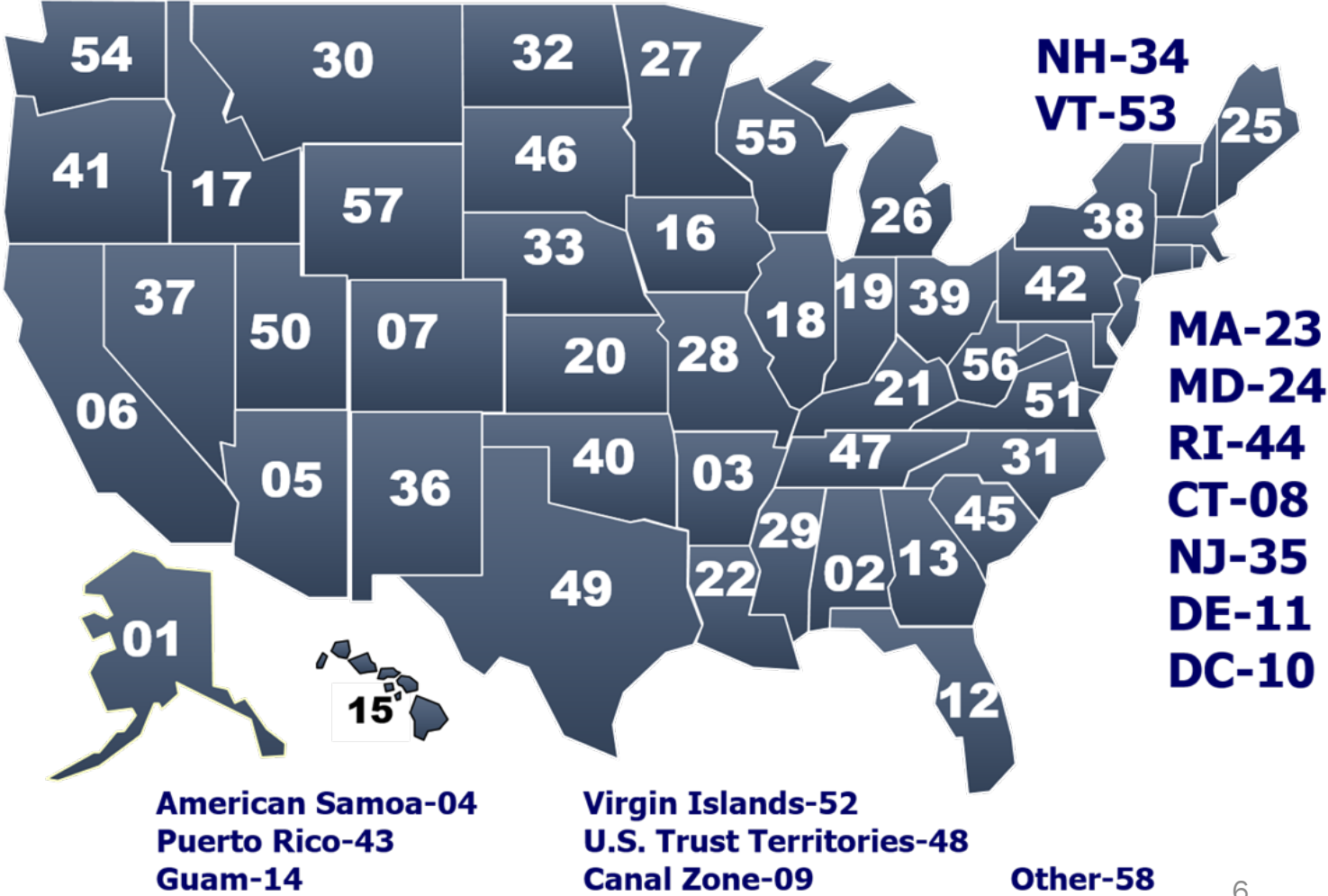
Evaluation Form: Work Location



FEMA

State Codes

- **Evaluation: Block #3**
 - Work Location (not where you live)



National Hurricane Program 1



FEMA



FEMA



®



NATIONAL HURRICANE PROGRAM

three federal partners, one mission to save lives

National Hurricane Program 2



FEMA



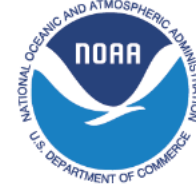
U.S. ARMY CORPS
OF ENGINEERS (USACE)

- National Program Managers
- District Office Study Managers



FEMA

- National Program Managers
- Regional Program Managers
- Hurricane Liaison Team



NATIONAL HURRICANE
CENTER (NHC)

- Hurricane Specialist Unit
- Technology and Science Branch

SERVICES



Operational Decision Support



Planning Support and Technical Assistance



Hurricane Preparedness Training

NHP Products and Services

products



FORECAST
PRODUCTS



STORM SURGE
MODELING



HURRICANE
EVACUATION
STUDIES



HURREVAC
HURRICANE EVACUATION
Decision Support Tool

services



OPERATIONAL
SUPPORT



PLANNING
SUPPORT



TRAINING



INFORMED
DECISIONS

Course Goal

To enable participants to better plan for a hurricane threat by ensuring that they understand hurricane hazards, forecast uncertainty, and resources for hurricane planning and response such as National Hurricane Center (NHC) forecast products and hurricane evacuation studies.



Course Objectives

After completing this course, you should be able to:

- Explain the **hurricane life cycle, climatology, and associated hazards** to coastal communities.
- Describe when **NHC products are available for tropical cyclones** and how to use them to determine threats from an approaching storm.
- Explain the **uncertainties of NHC forecasts** that must be considered in emergency management decision making.
- Describe the **storm surge threat** and how to assess potential impacts.
- Explain the **components of Hurricane Evacuation Studies (HES)** and how they can inform planning for hurricanes.
- Identify the resources available for **evacuation planning and response** and discuss how to use them.

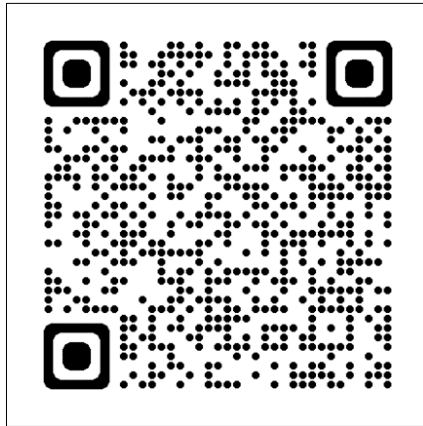
Course Agenda: K0311



Course Agenda	Length
Unit 0: Course Overview	30 minutes
Unit 1: Hurricane Basics	105 Minutes
Unit 2: National Weather Service (NWS) Products	90 Minutes
Lunch	
Unit 3: Forecast Uncertainty	75 Minutes
Unit 4: Making Better Decisions	90 Minutes

Course Materials

- **Agenda**
- **L0311 Student Manual**
- **Handouts**



<http://www.NHC.noaa.gov/outreach/>



Instructors

- **Name**
- **Position**
- **Synopsis of Hurricane Experience**

Questions



FEMA



National Weather Service National Hurricane Center

Home News Organization Search [] INWS JRNORA

Top News of the Day... view past news Last update Fri, 4 Jul 2014 01:21:13 UTC

- **NHC issuing advisories on Hurricane ARTHUR and TD DOUGLAS**
- Inside the Eye: Storm Surge-Plain and Simple (Part 2)
- Five-day Graphical Tropical Weather Outlook introduced (PDF) - video overview
- Update on NHC Products and Services for 2014 (PDF)

Eastern Pacific Atlantic



Poll Question 1



**How long have you worked in the field of
Emergency Management?**

- A. Less than 1 year
- B. 1 to 5 years
- C. 5 to 15 years
- D. More than 15 years

What level of Emergency Management do you represent?

- A. Local
- B. State
- C. Tribal or Territory
- D. Federal
- E. Other

What is your primary role in Emergency Management?

- A. Plans
- B. Operations
- C. Public Information Specialist
- D. Training and Exercise
- E. Other

Poll Question 4



In your role, what is your level of experience with hurricanes?

- A. None, just starting out
- B. Little
- C. Moderate
- D. Extensive

Have you attended a National Hurricane Program course in the past?

- A. Yes, L0311, Hurricane Readiness for Coastal Communities (this Course)
- B. Yes, L8324, Hurricane Preparedness for Decision Makers (at NHC)
- C. Yes, L0320, Hurricane Preparedness for Decision Makers (State Hosted)
- D. Yes, L0310, Hurricane Readiness for Inland Communities
- E. Yes, HURREVAC Training Courses
- F. No, This is my first NHP class.