

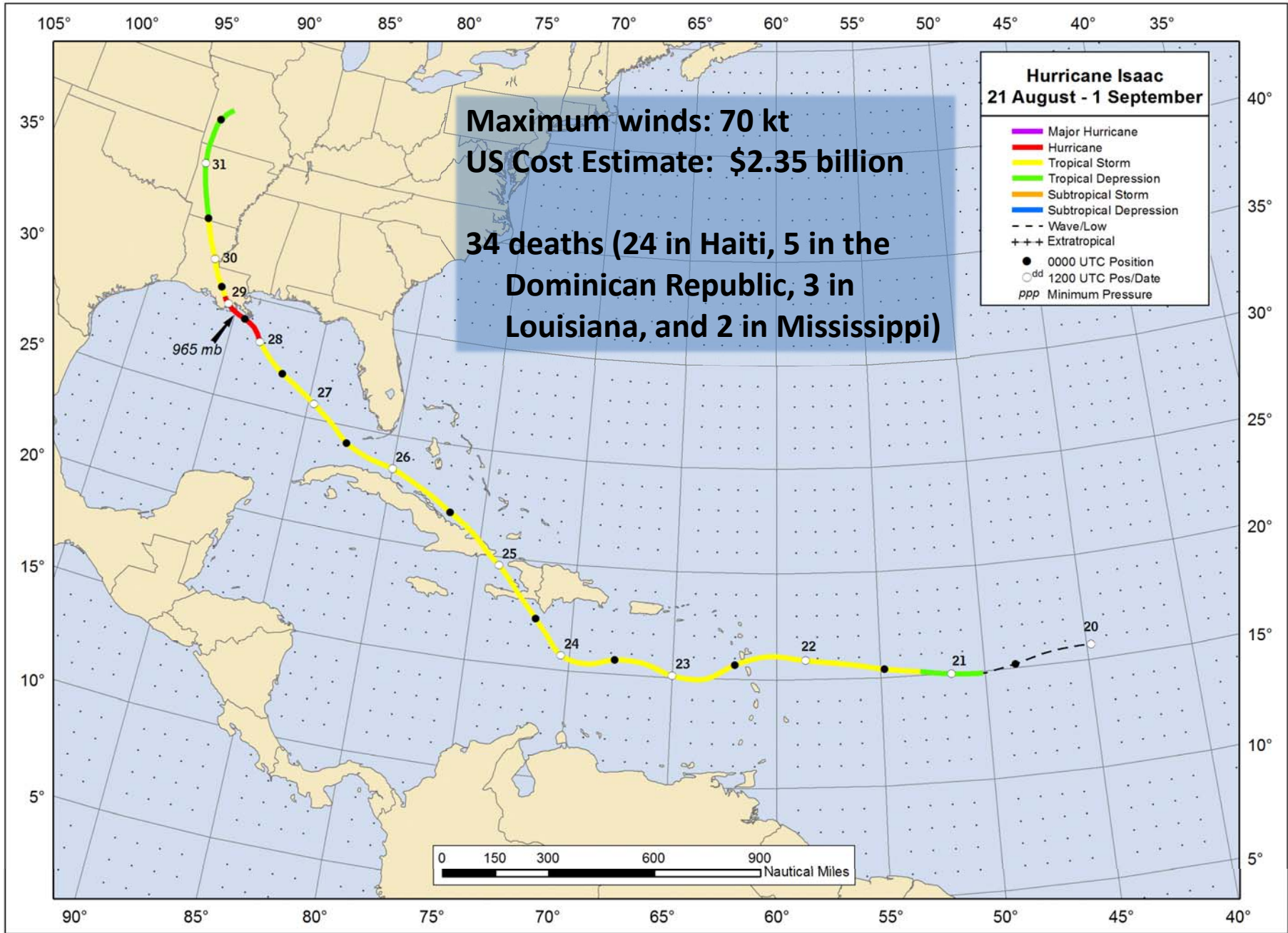
# Hurricane Isaac

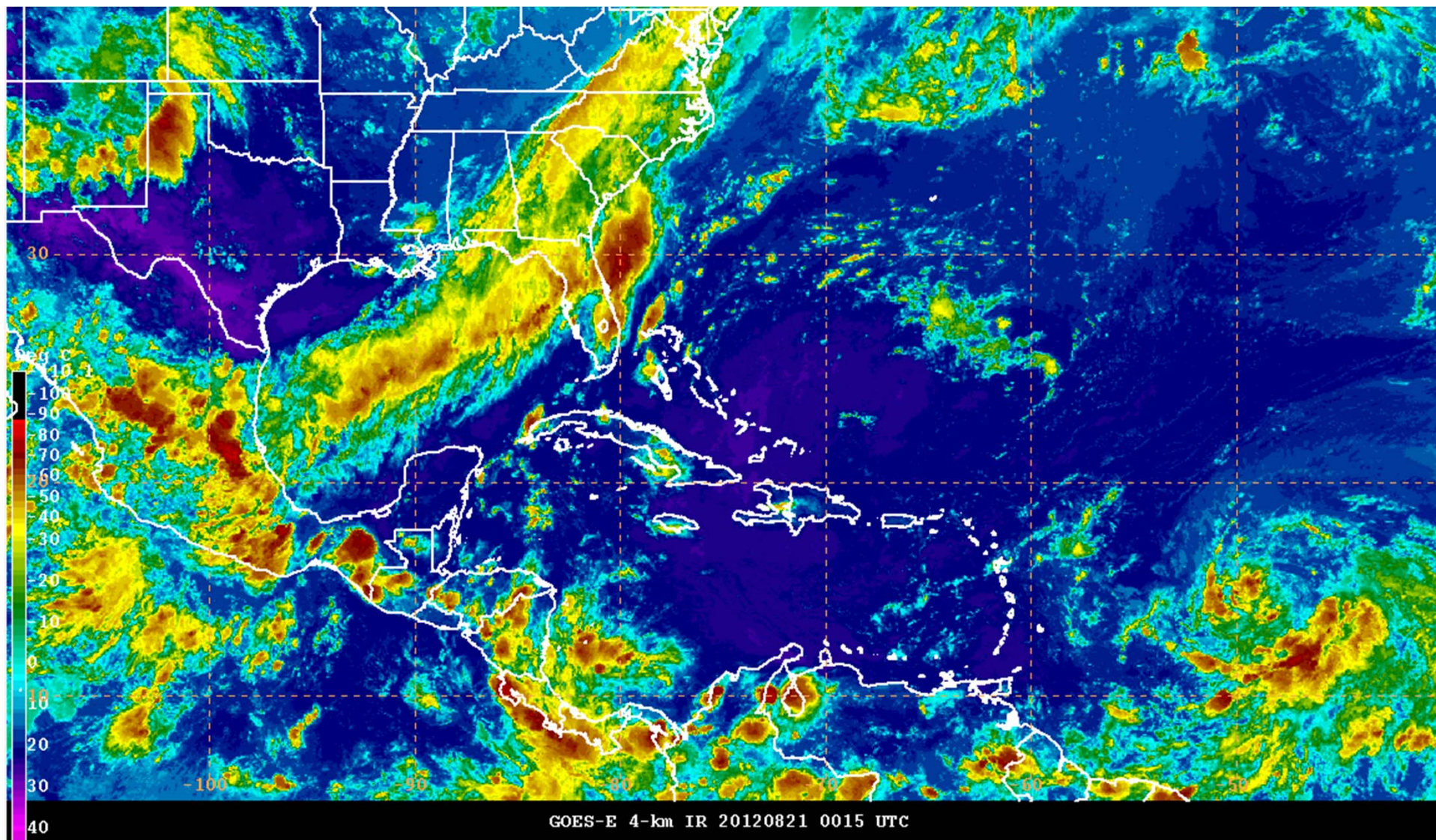


Robbie Berg  
National Hurricane Center

National Hurricane Conference  
New Orleans, LA  
28 March 2013







## FWI Radar Mosaic

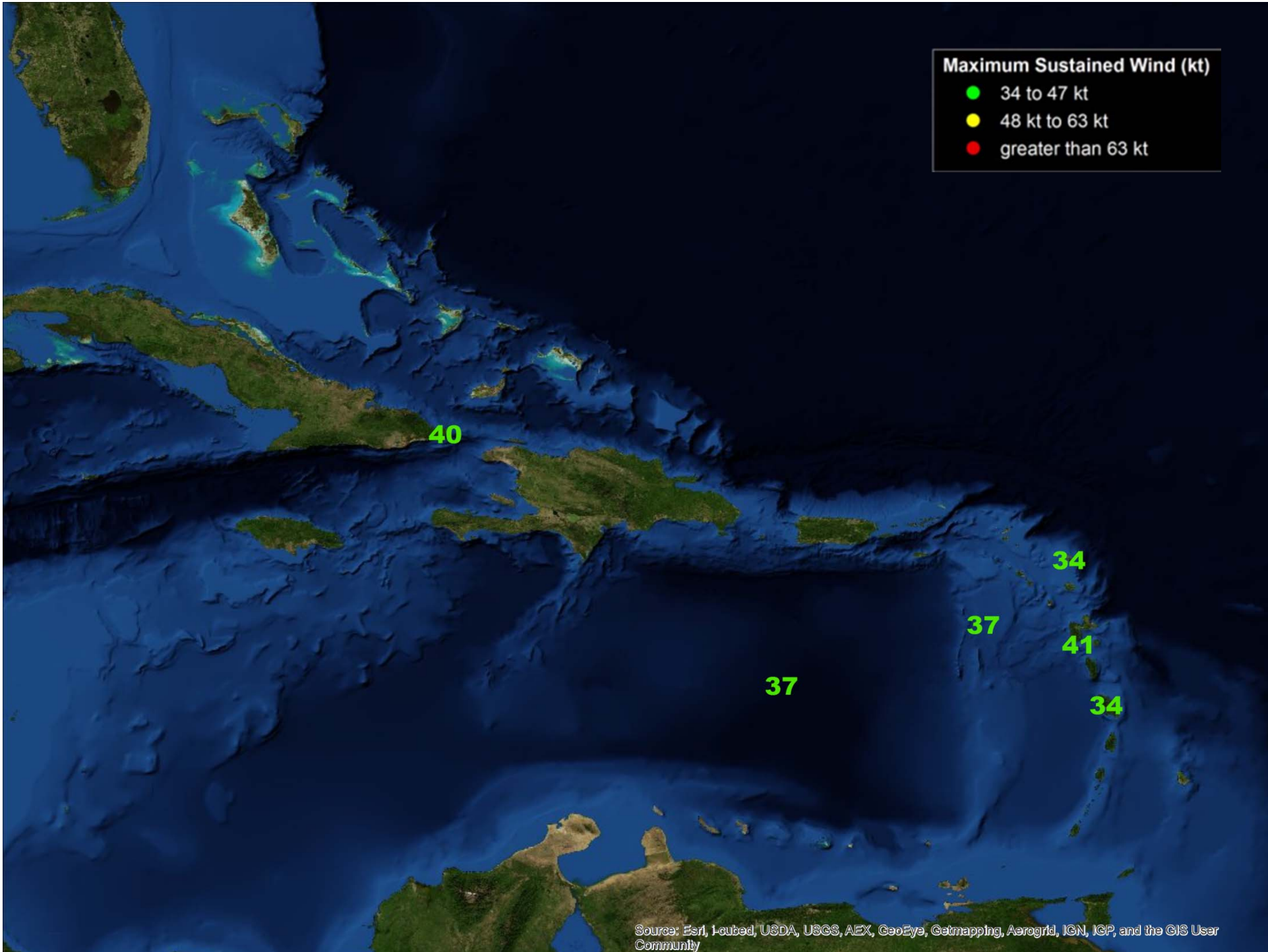
2012 / 08 / 22  
00H00 UTC

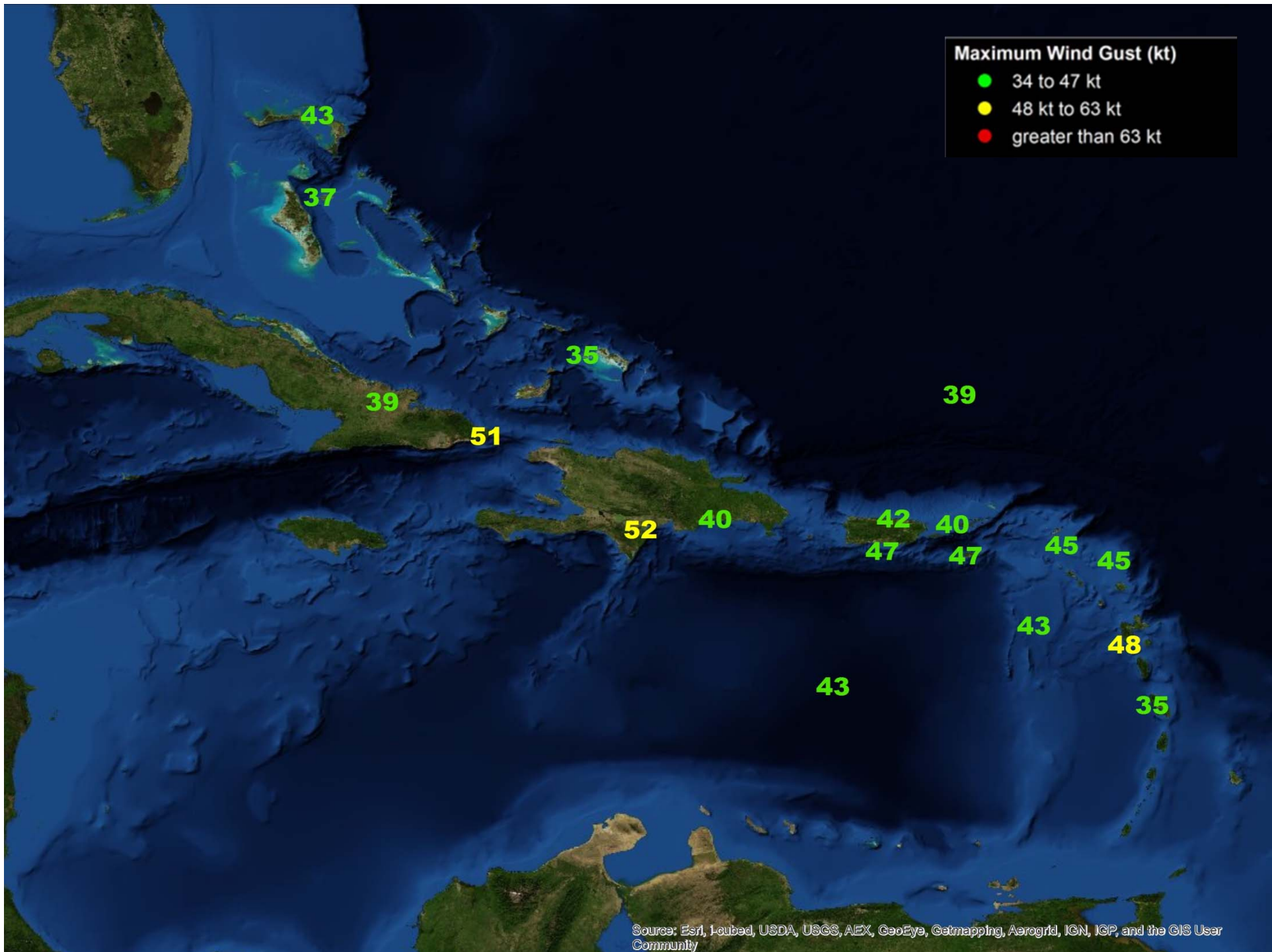
### REFLECTIVITY

Red	62.0- 66.0+>
Dark Red	58.5- 62.0
Orange-Red	55.0- 58.5
Orange	51.5- 55.0
Light Orange	48.0- 51.5
Yellow-Orange	44.5- 48.0
Yellow	41.0- 44.5
Light Yellow	37.5- 41.0
Light Green	34.0- 37.5
Green	30.5- 34.0
Dark Green	27.0- 30.5
Cyan	23.5- 27.0
Light Blue	20.0- 23.5
Blue	16.5- 20.0
Dark Blue	13.0- 16.5

dBZ

RANGE : 400 km







Haiti (YouTube/Nizar Abboud)



Port au Prince, Haiti (Logan Abassi/Reuters)

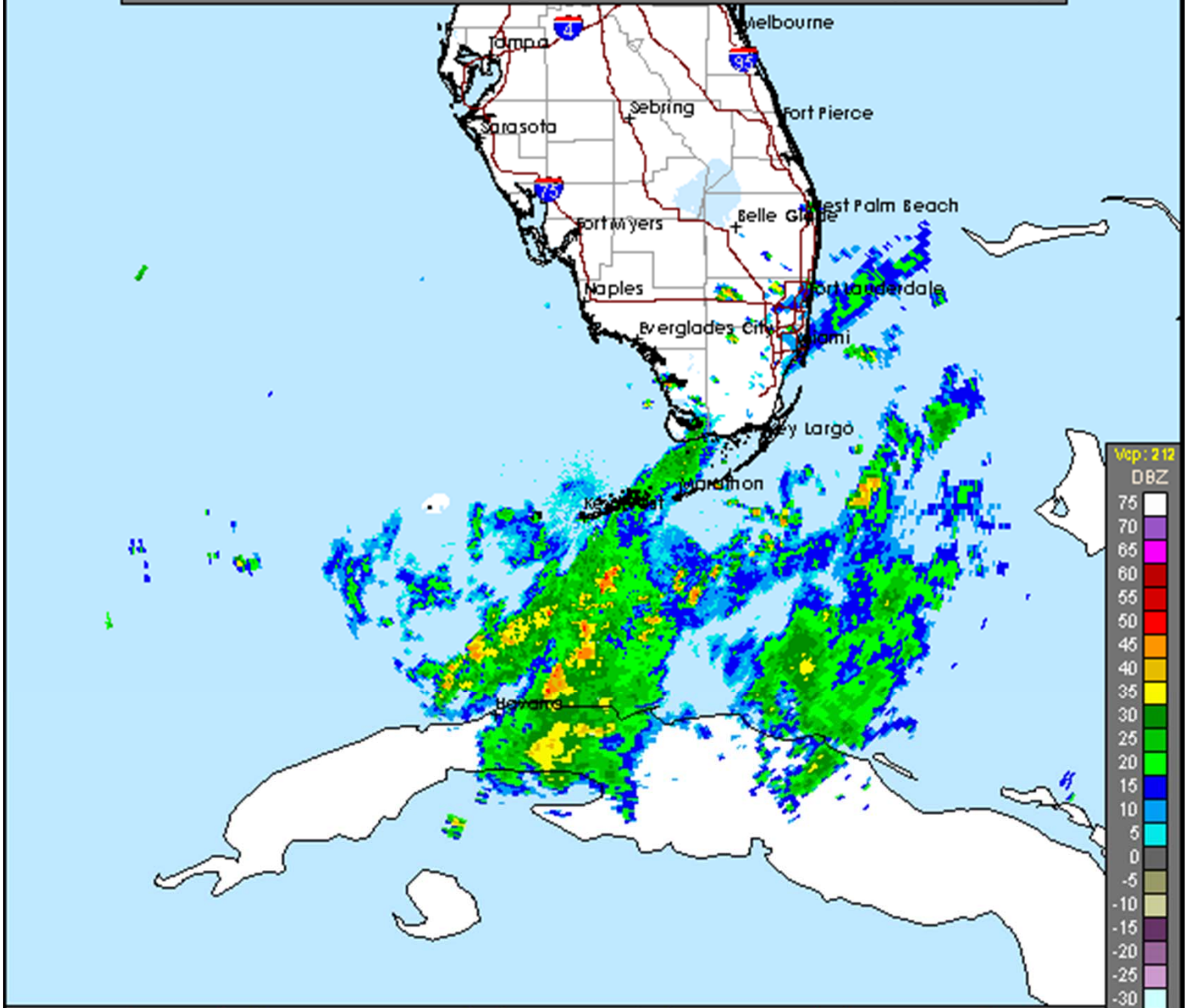


Leogane, Haiti (Victoria Hazou/MINUSTAH)



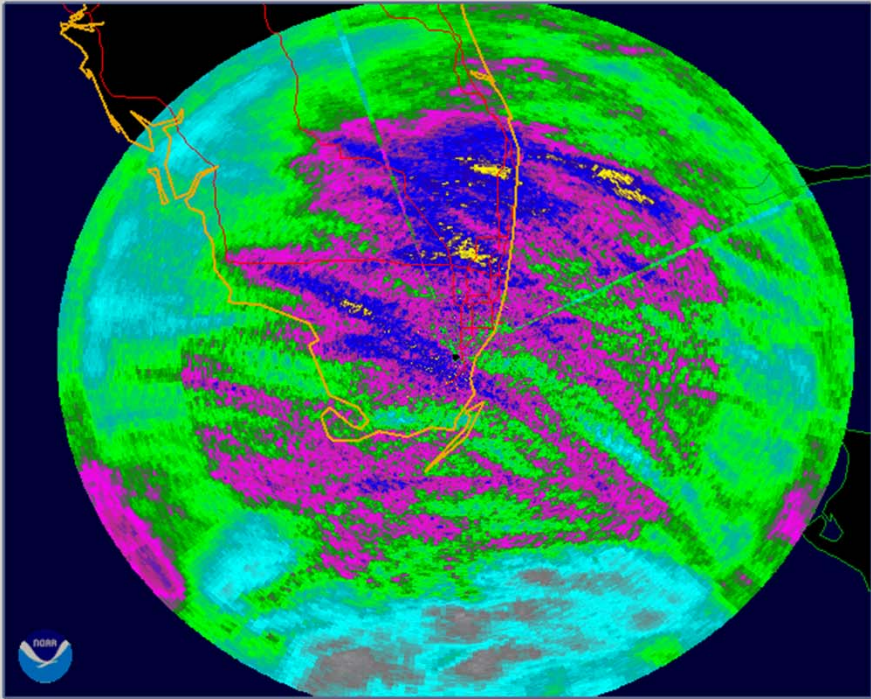
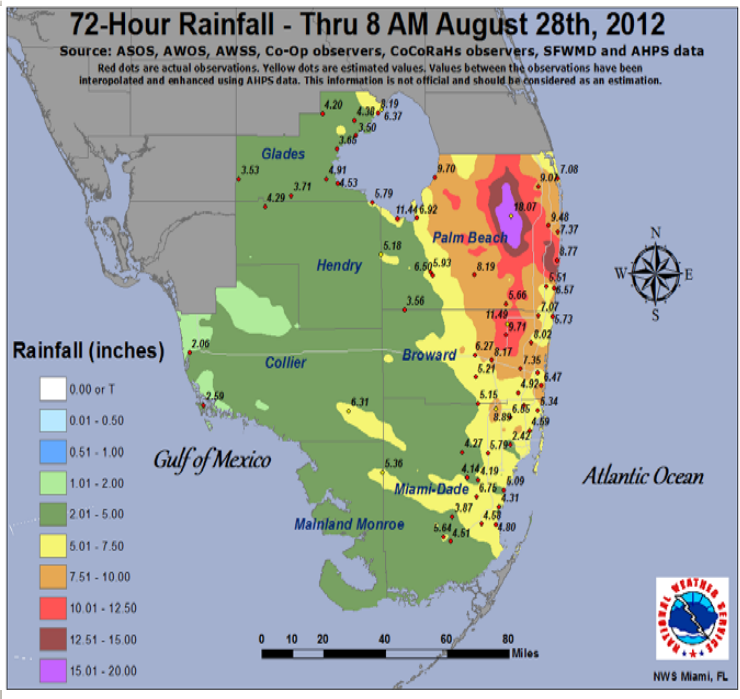
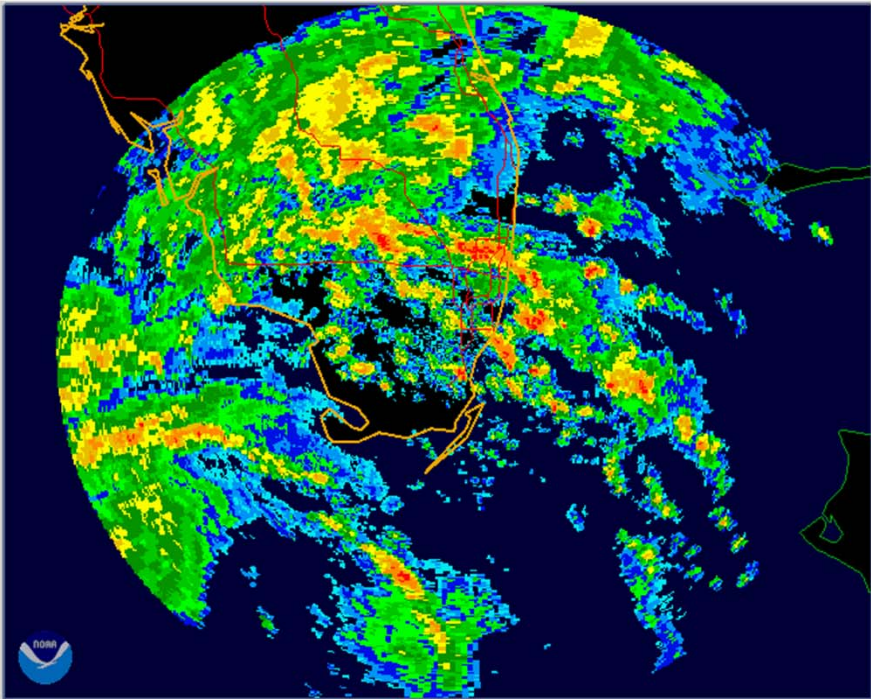
Enriquillo, Dominican Republic (Orlando Barria/EPA)

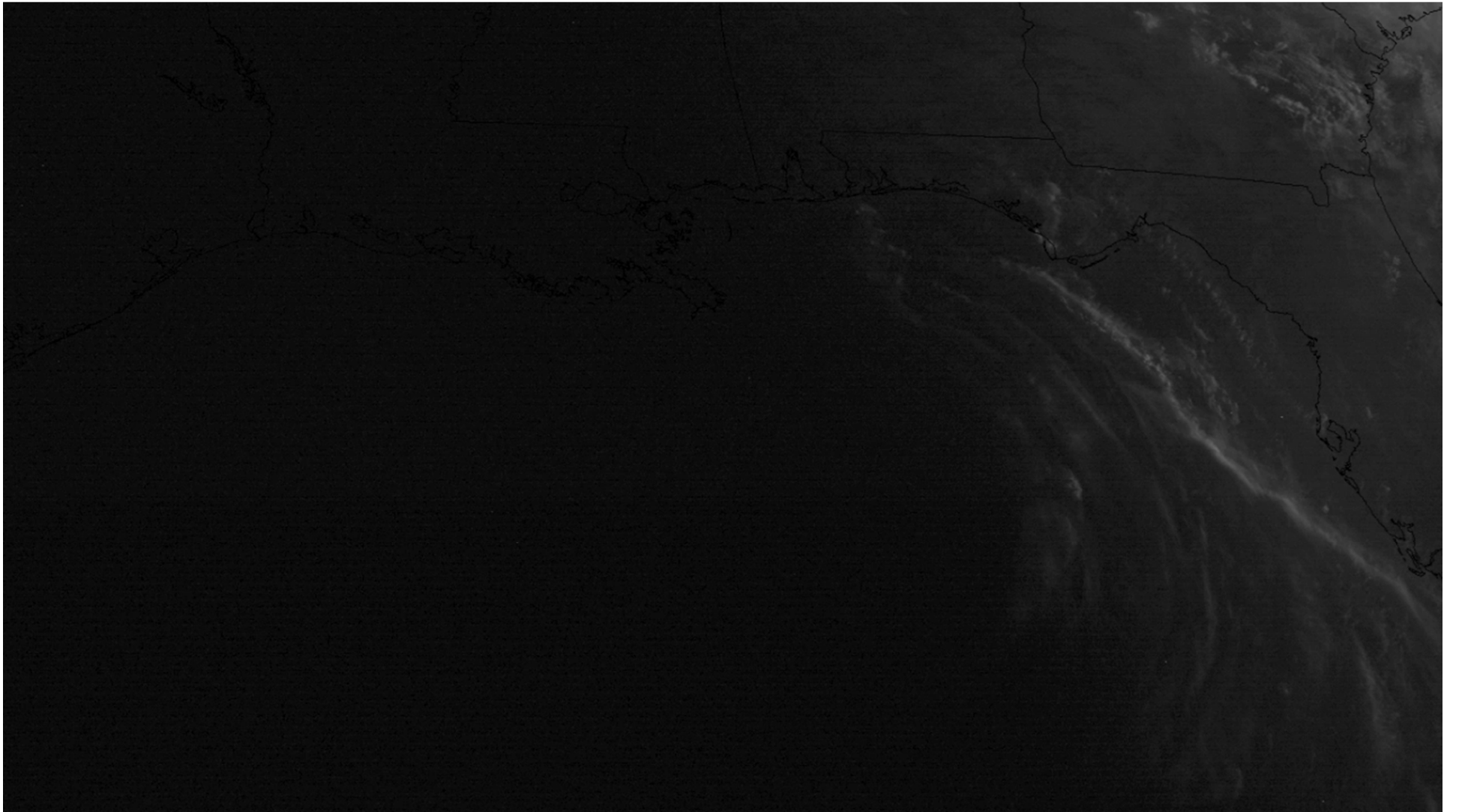
National Weather Service WSR-88D Image from: BYX 08/26/2012 04:03 UTC (12:03 AM EDT)

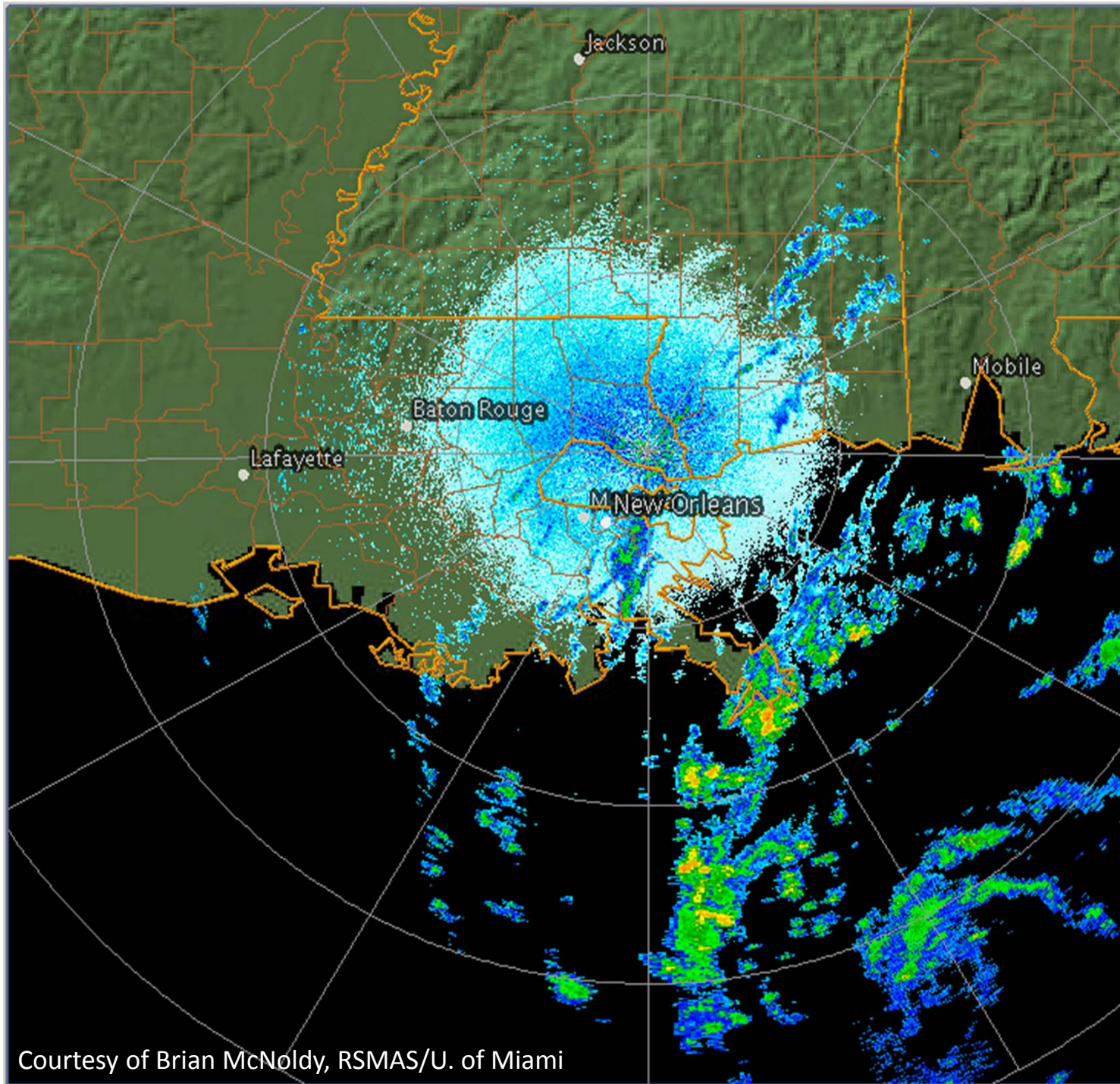


Warnings: **Tornado** Severe Thunderstorm Flash Flood Special Marine Extreme Wind





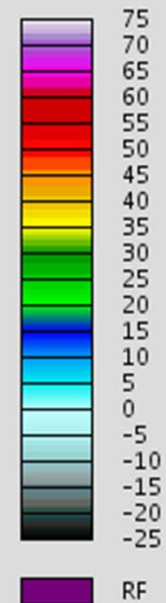




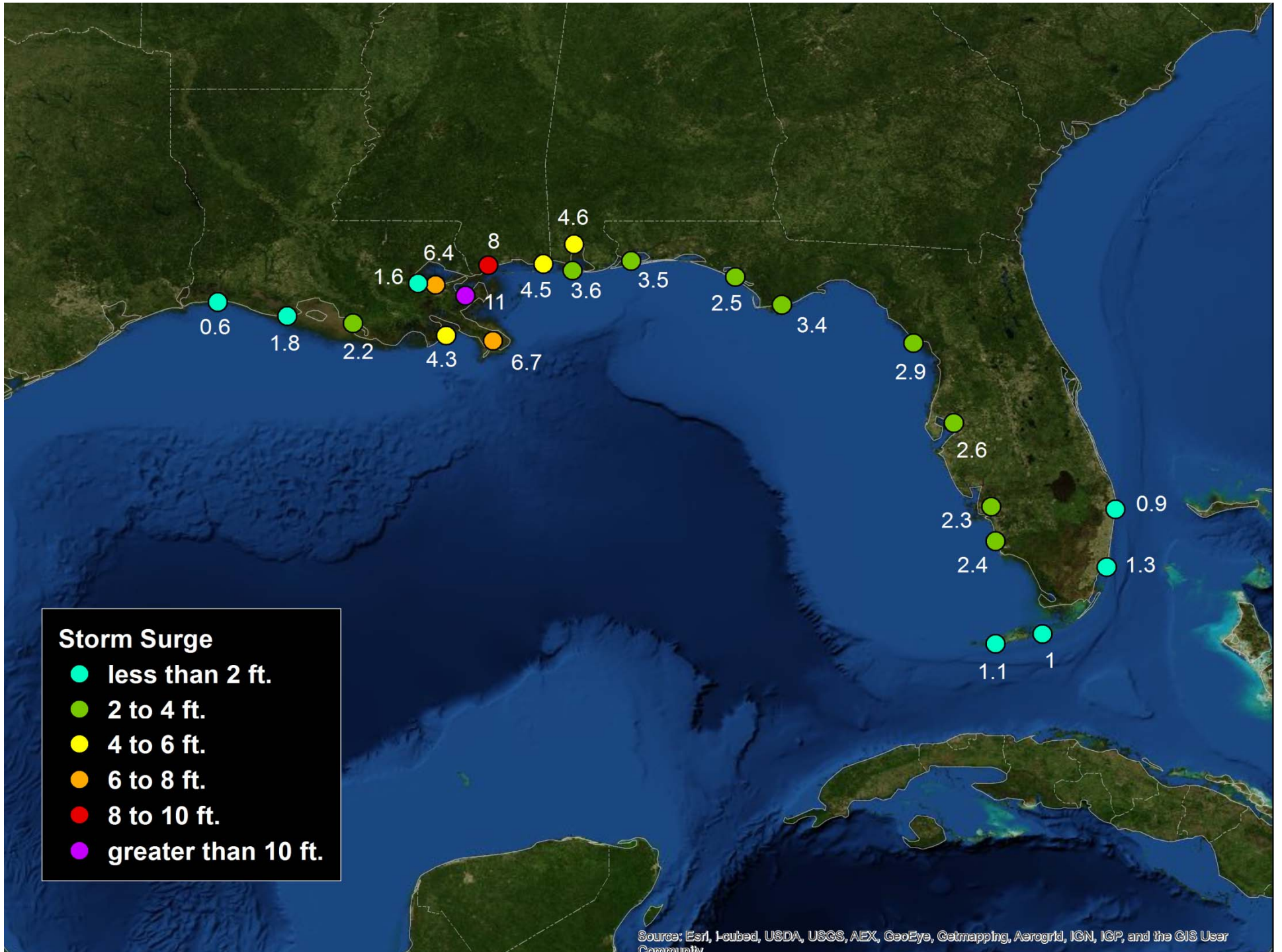
NEXRAD LEVEL-II  
KLIX - NEW ORLEANS, LA  
08/28/2012 09:01:13 GMT  
LAT: 30/20/13 N  
LON: 89/49/33 W  
ELEV: 24 FT  
VCP: 221

REFLECTIVITY  
ELEV ANGLE: 0.49

Legend: dBZ



Courtesy of Brian McNoldy, RSMAS/U. of Miami

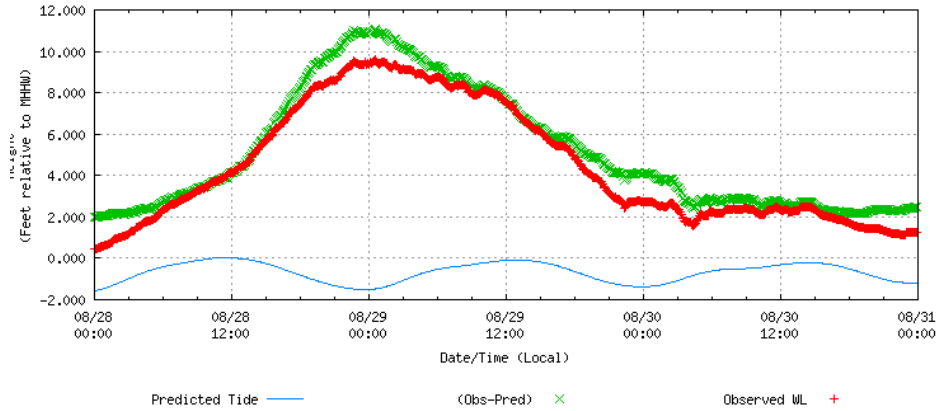


Source: Esri, i-cubed, USDA, USGS, AEX, GeoEye, Getmapping, Aerogrid, IGN, IGP, and the GIS User Community

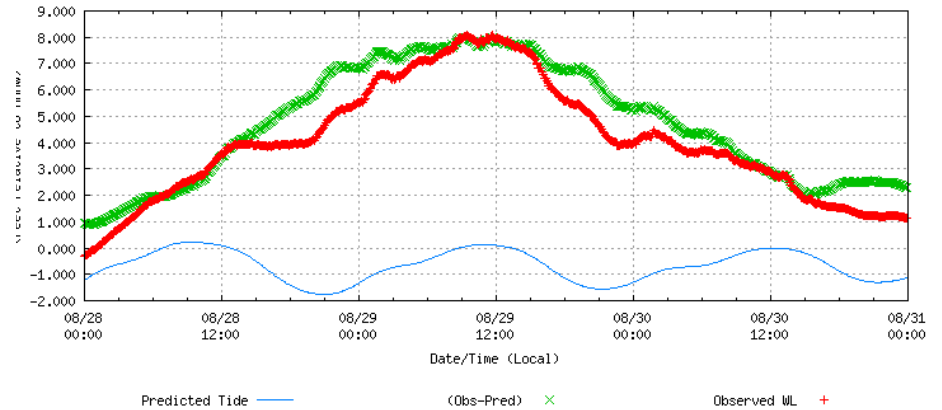


# Isaac Storm Surge

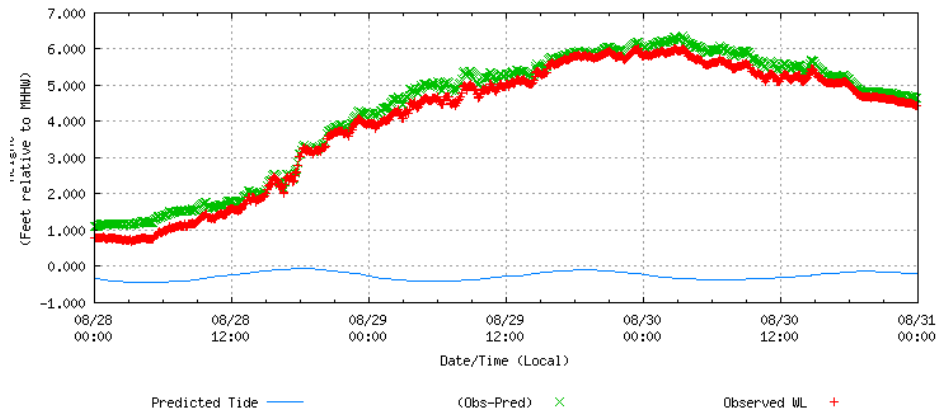
## Shell Beach, LA



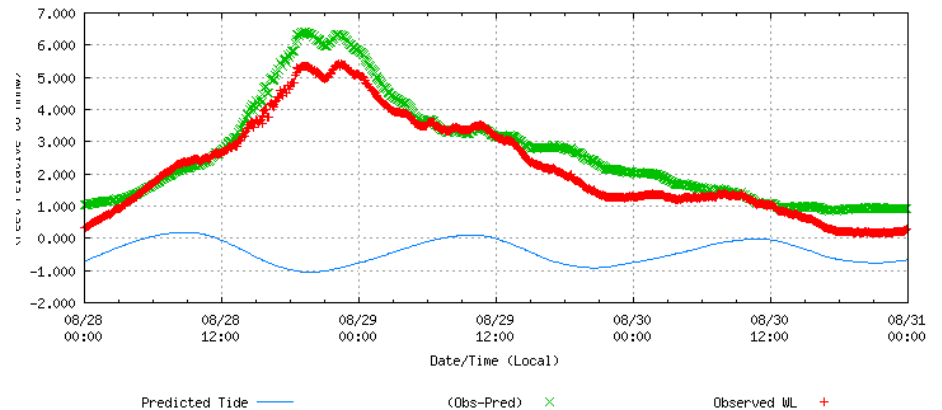
## Bay Waveland Yacht Club, MS



## New Canal Station, LA



## Pilottown, LA



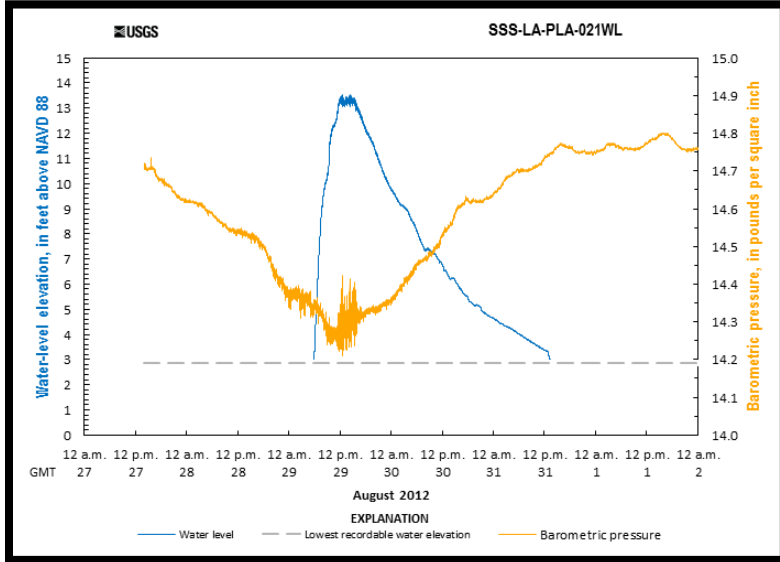
**Storm surge: up to 11 ft *above normal levels* in LA**

**Inundation: up to 17 ft *above ground* in LA**

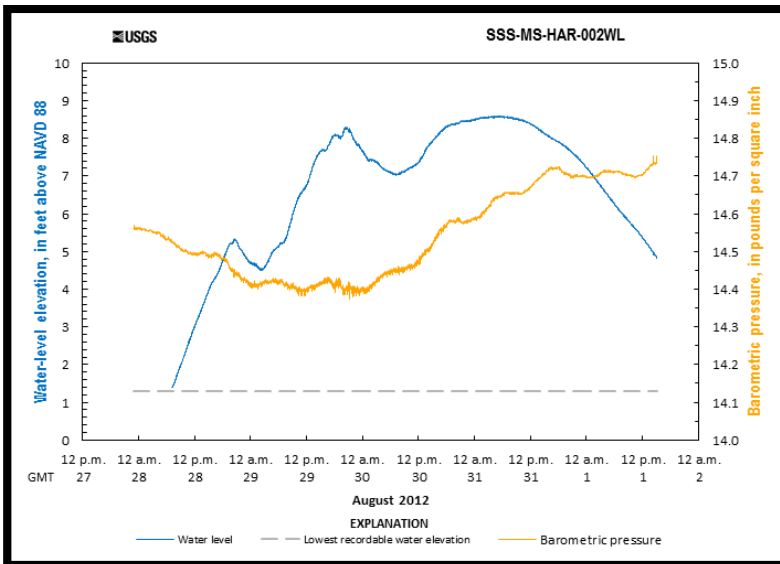
(in some areas of Plaquemines Parish that are below sea level)

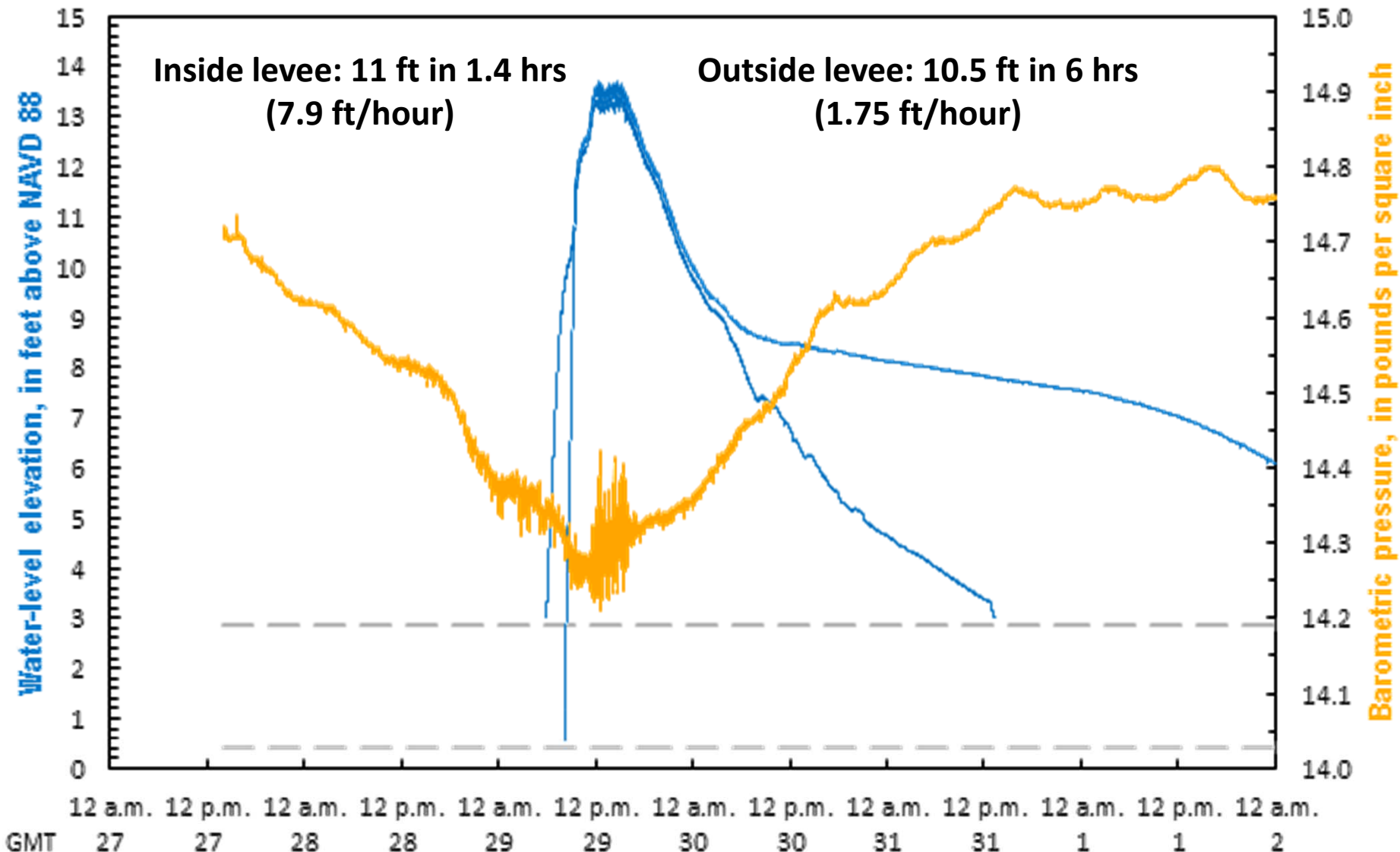
# Isaac Storm Surge

**Caernarvon, LA**



**Biloxi, MS**





August 2012

**EXPLANATION**

- Water level
- - - Lowest recordable water elevation
- Barometric pressure



Metairie

St. Bernard

Lakeview

New Orleans

Chalmette

Maroux

Westwego

Marrero

Gretna

Violet

Timberlane

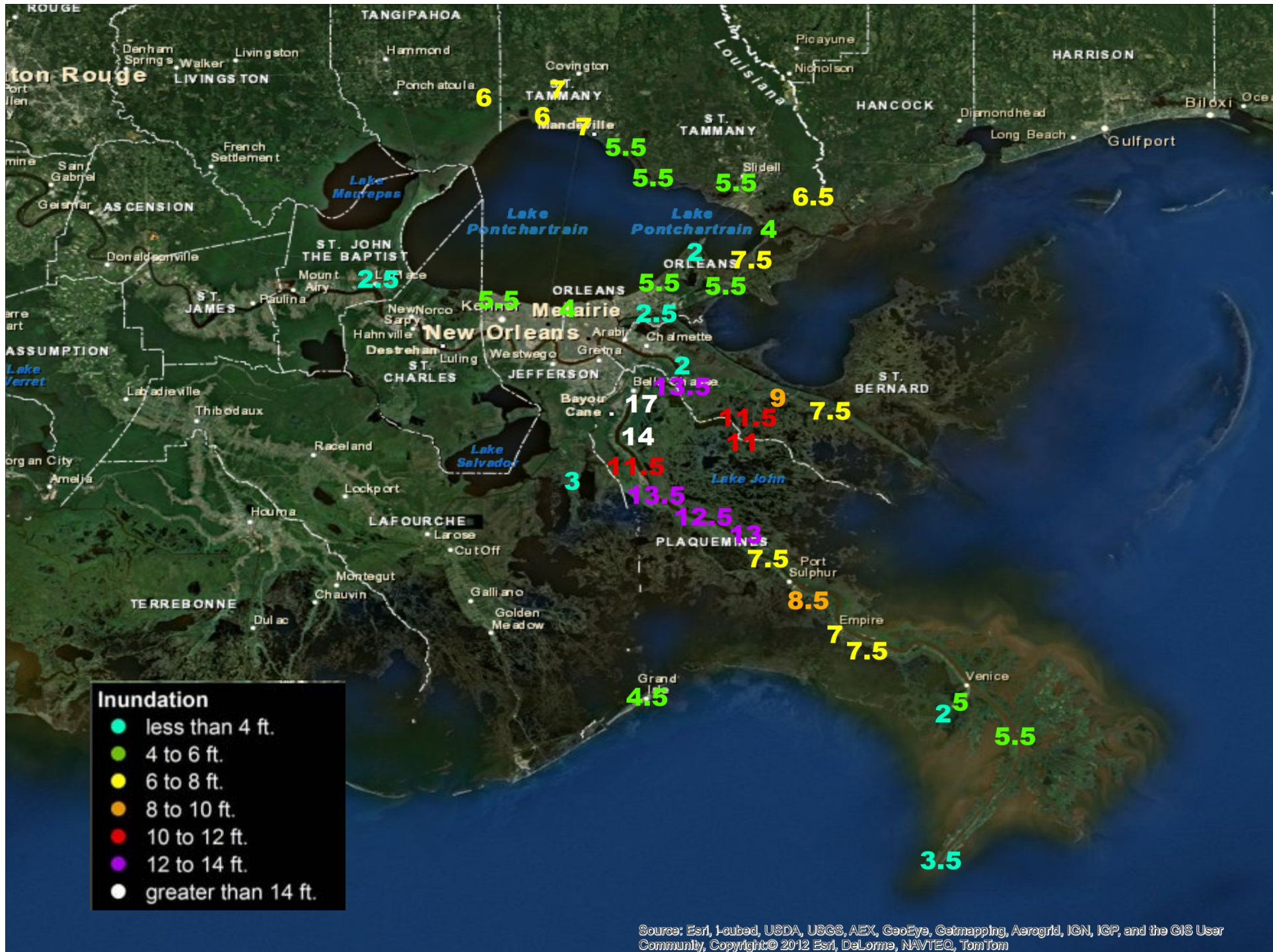
Brattville

St Bernard

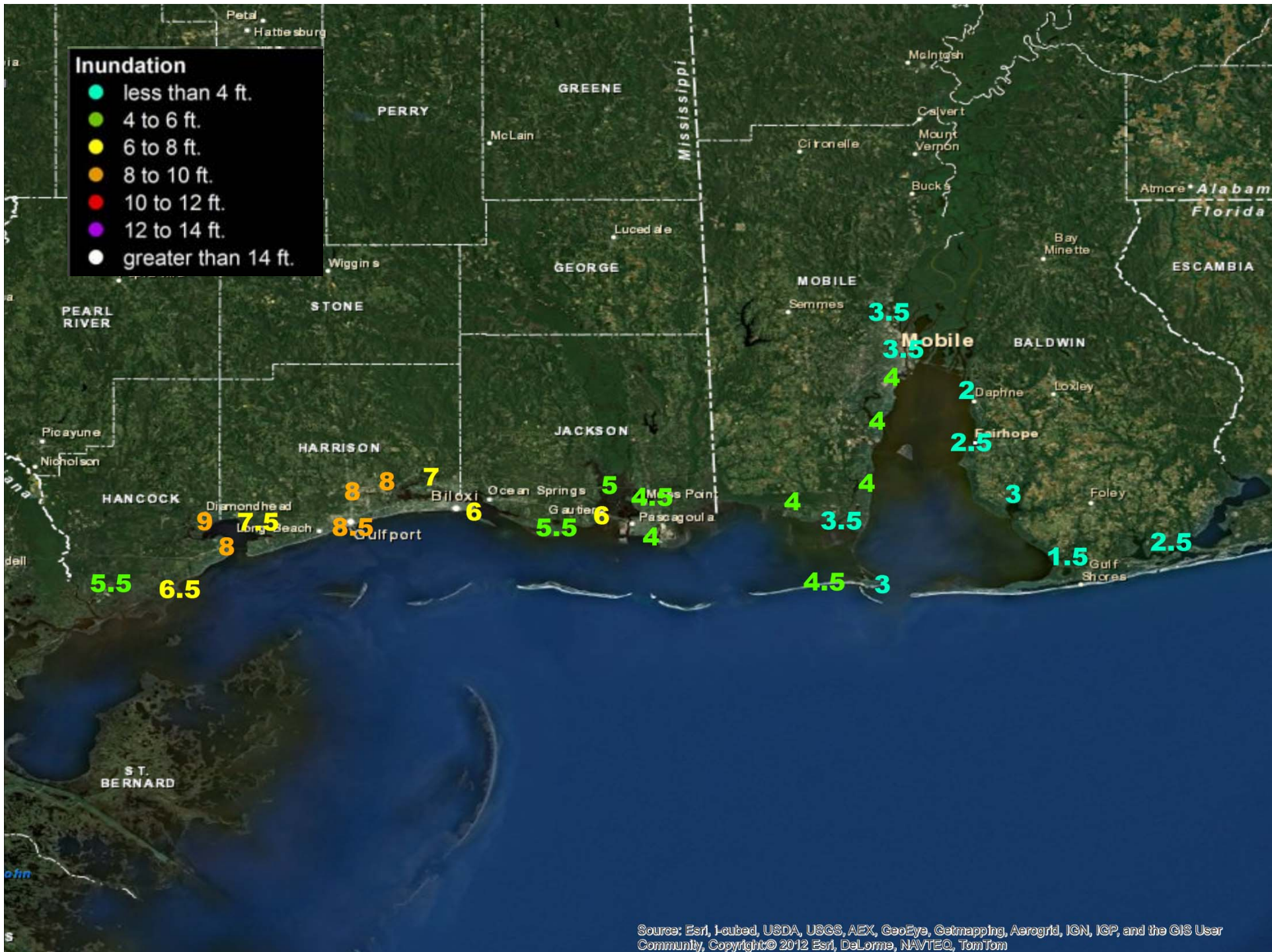
Woodmere

Belle Chasse





Source: Esri, 1-cubed, USDA, USGS, AEX, GeoEye, Getmapping, Aerogrid, IGN, IGP, and the GIS User Community, Copyright© 2012 Esri, DeLorme, NAVTEQ, TomTom



Source: Esri, i-cubed, USDA, USGS, AEX, GeoEye, Getmapping, Aerogrid, IGN, IGP, and the GIS User Community, Copyright© 2012 Esri, DeLorme, NAVTEQ, TomTom



Braithwaite, Louisiana (Twitter/JMLeblanc23)



Slidell, Louisiana (Michael DeMocker/Times-Picayune)



Laplace, Louisiana (Michael DeMocker/Times-Picayune)



Plaquemines Parish, Louisiana (Homeland Security Watch)



Waveland, MS (Rogelio V. Solis/AP)



Dauphin Island, AL (Butch Dill/AP)

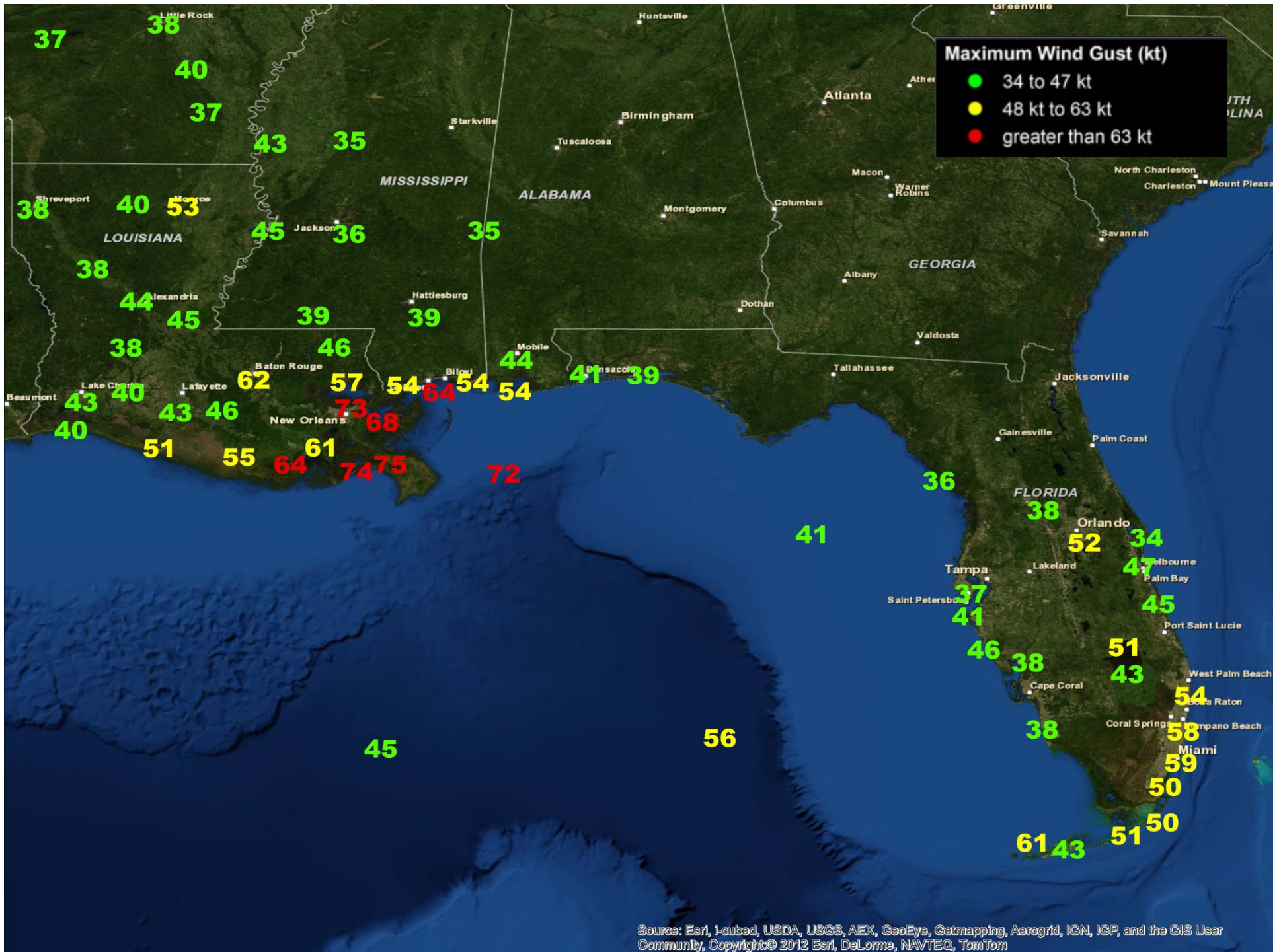


Bay St. Louis, MS (Rogelio V. Solis/AP)



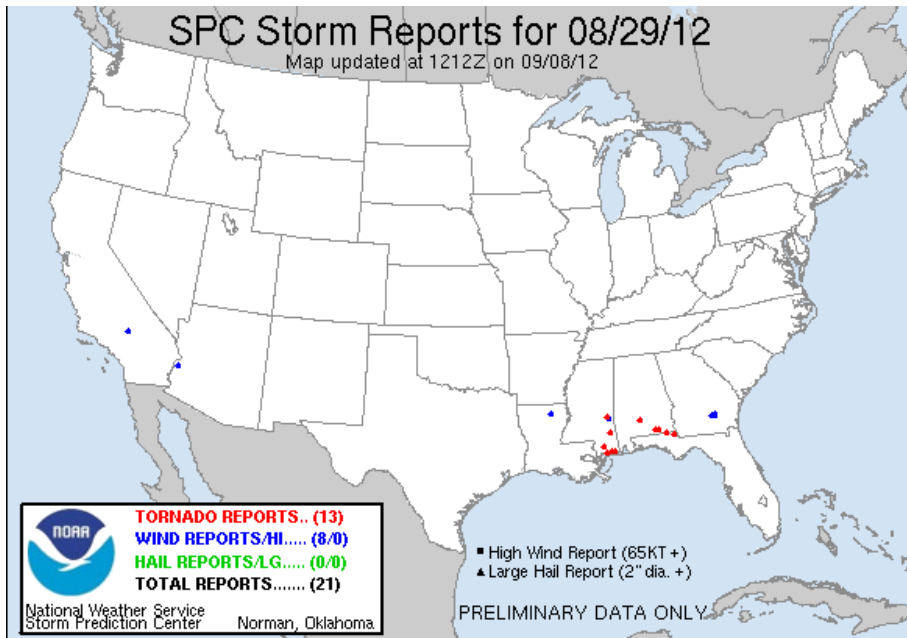
Ocean Springs, MS (Michael Spooner/Reuters)



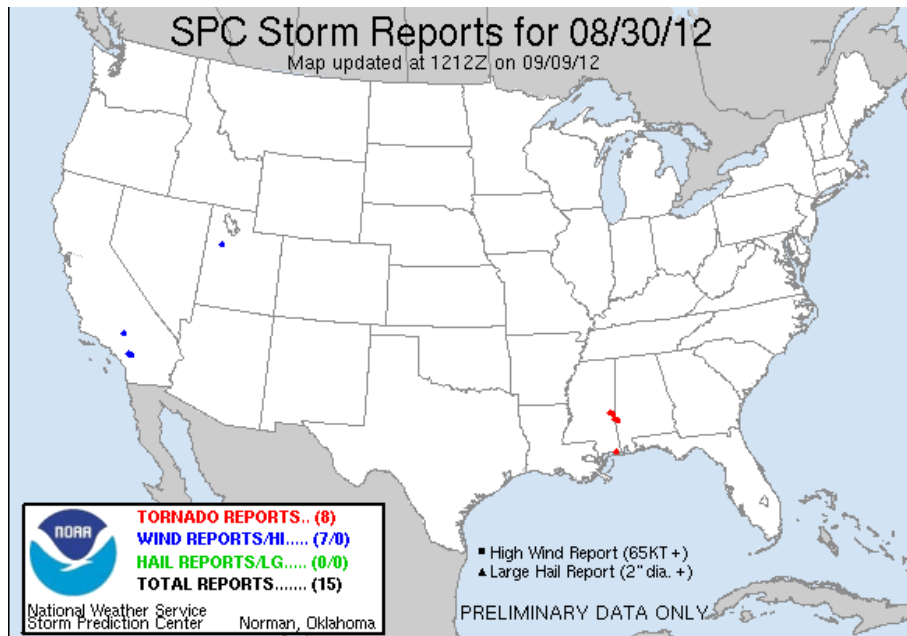


Source: Esri, i-cubed, USDA, USGS, AEX, GeoEye, Getmapping, Aerogrid, IGN, IGP, and the GIS User Community, Copyright© 2012 Esri, DeLorme, NAVTEQ, TomTom

# Isaac Tornadoes

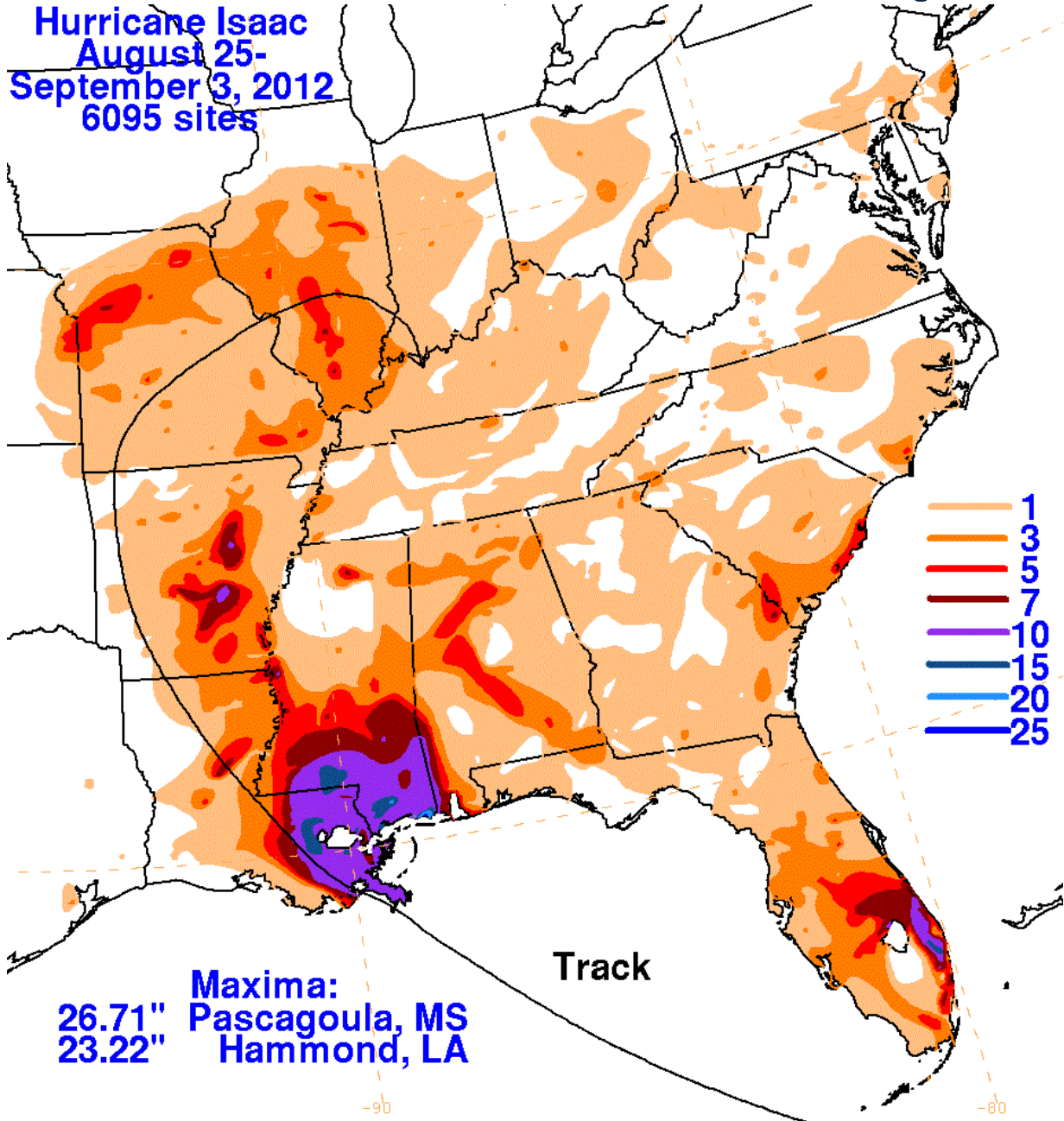


- 17 tornadoes reported
  - 5 in Florida
  - 4 in Alabama
  - 6 in Mississippi
  - 2 in Illinois
- 3 people injured in Mississippi and 1 in Illinois
- Strongest was an EF-2 in Pascagoula, MS
- 9 additional tornadoes occurred in Illinois, Missouri, and Arkansas after Isaac became post-tropical



# Isaac Rainfall/Flooding

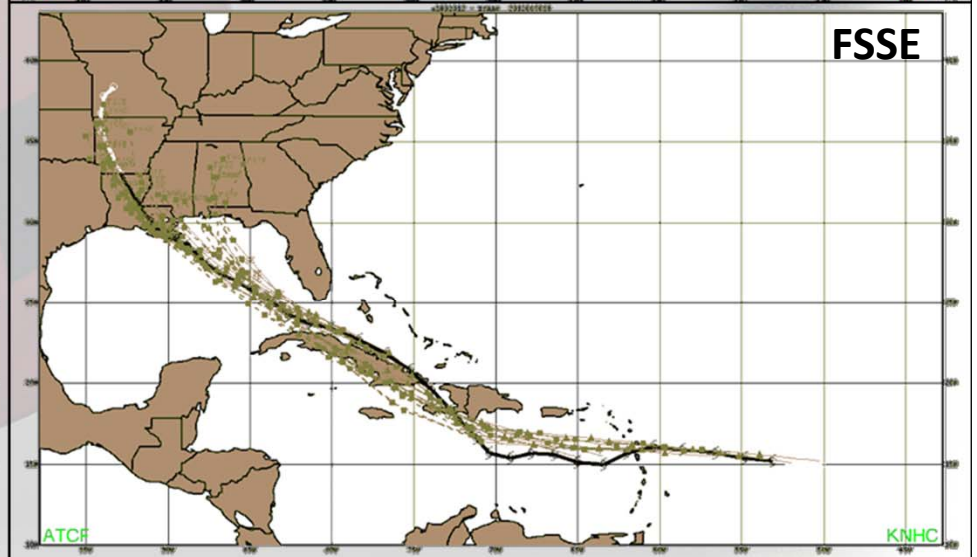
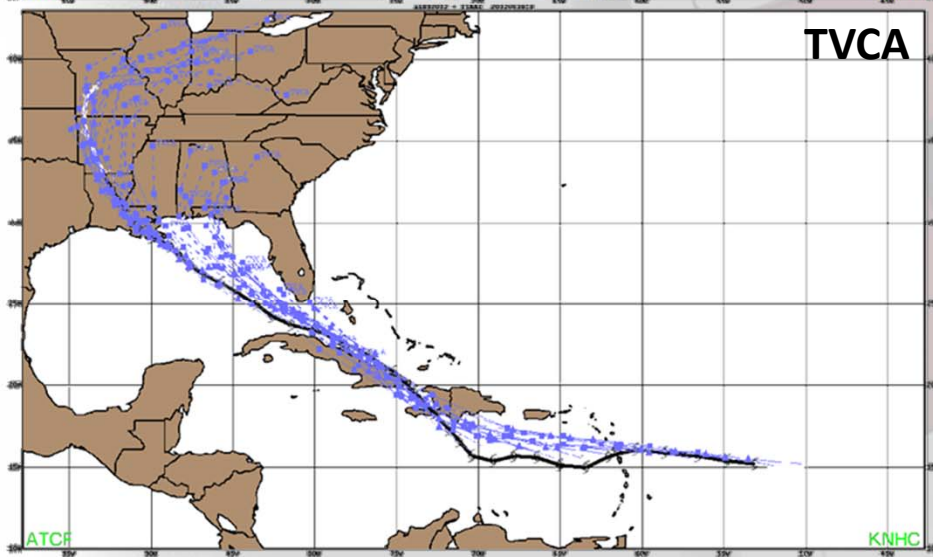
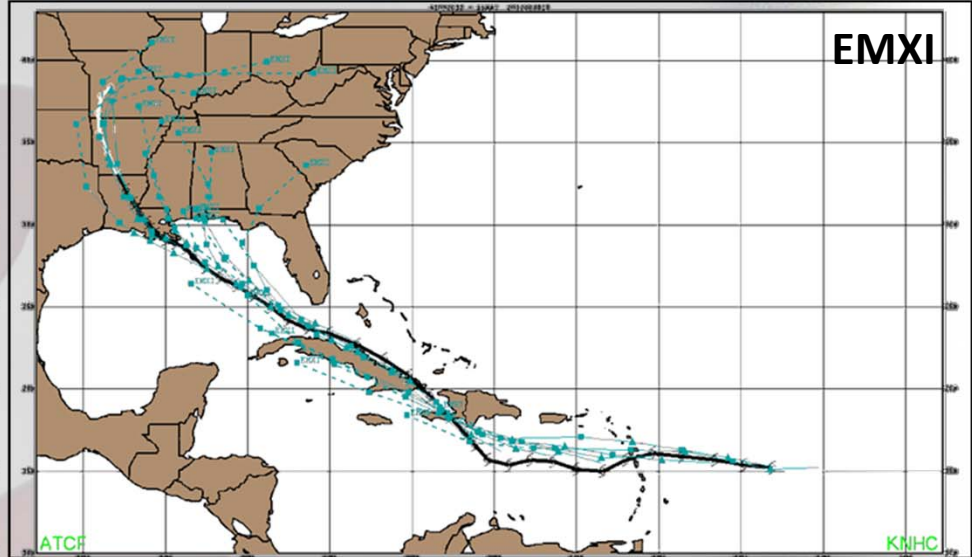
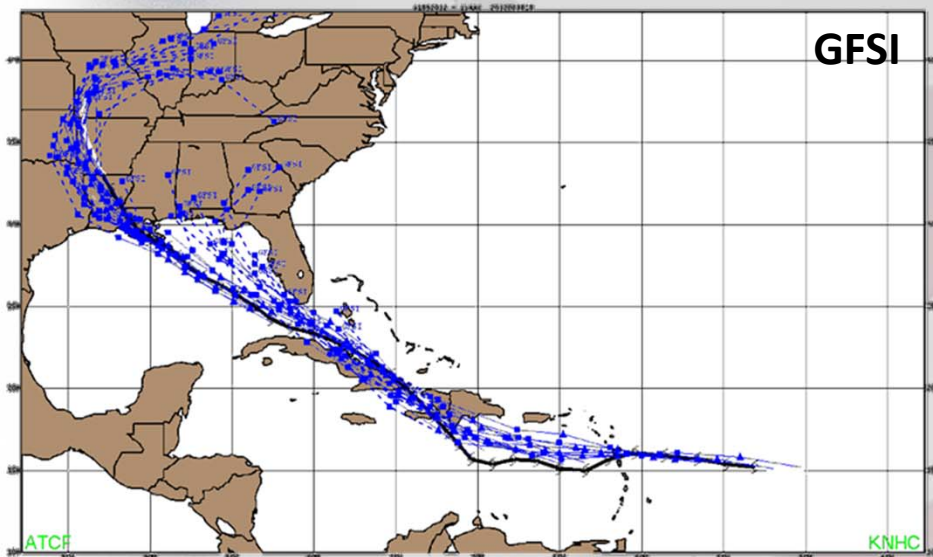
Hurricane Isaac  
August 25-  
September 3, 2012  
6095 sites



- 9.28" near Ponce, Puerto Rico
- 16.18" in Barahona, Dominican Republic
- 14.08" in San Antonio del Sur, Cuba
- 15.86" in Loxahatchee, Florida
- Record flooding on the Wolf River (8.5 ft above flood stage near Gulfport, MS)
- Record flooding on the East Hoblochitto Creek (6.5 ft above flood stage near Caesar, LA)

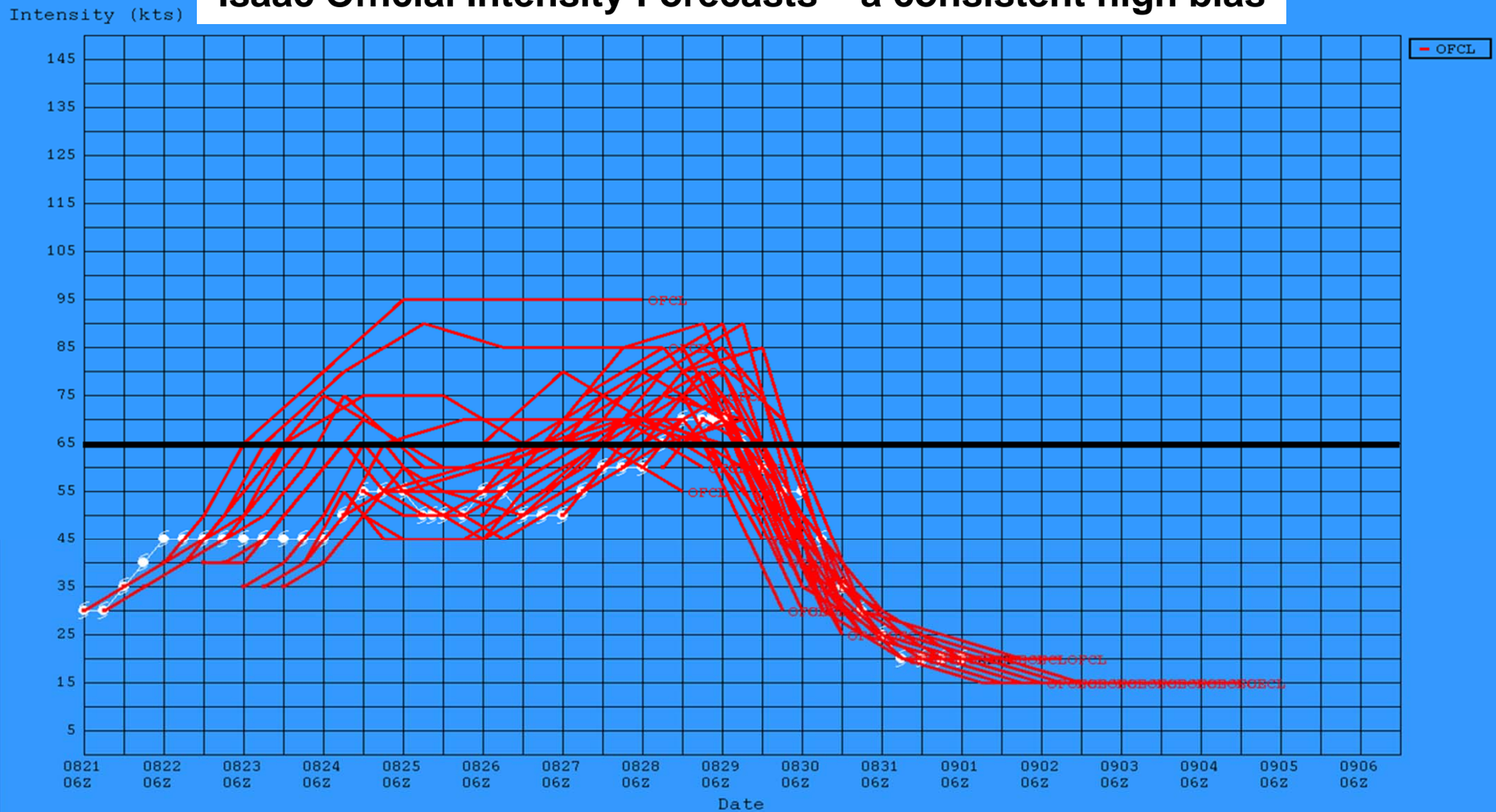


# Isaac Track Guidance



# Isaac Intensity Forecasts

Isaac Official Intensity Forecasts – a consistent high bias



Questions?

