

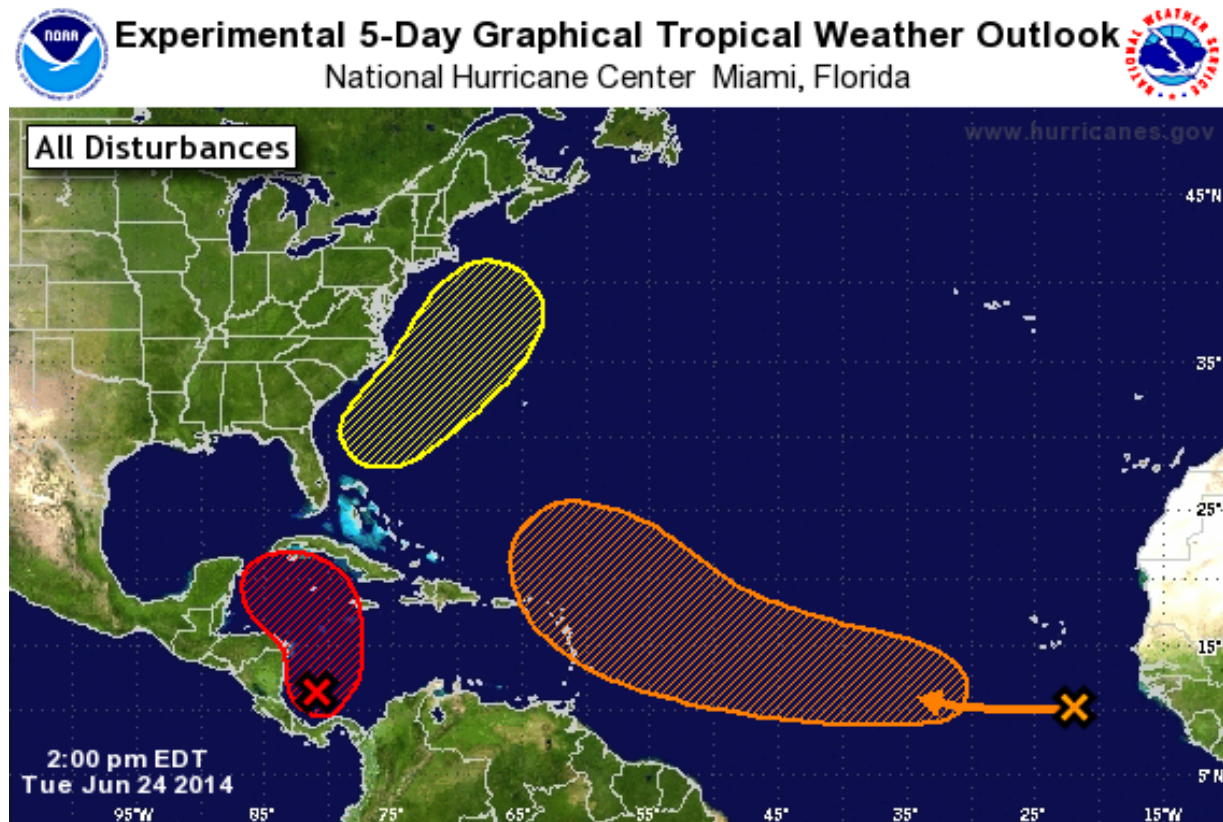


## Five-Day Graphical Tropical Weather Outlook Introduced

Beginning at 2 p.m. EDT July 1<sup>st</sup>, NOAA's National Hurricane Center (NHC) will introduce an experimental five-day Graphical Tropical Weather Outlook (GTWO) to accompany its text Tropical Weather Outlook (TWO).

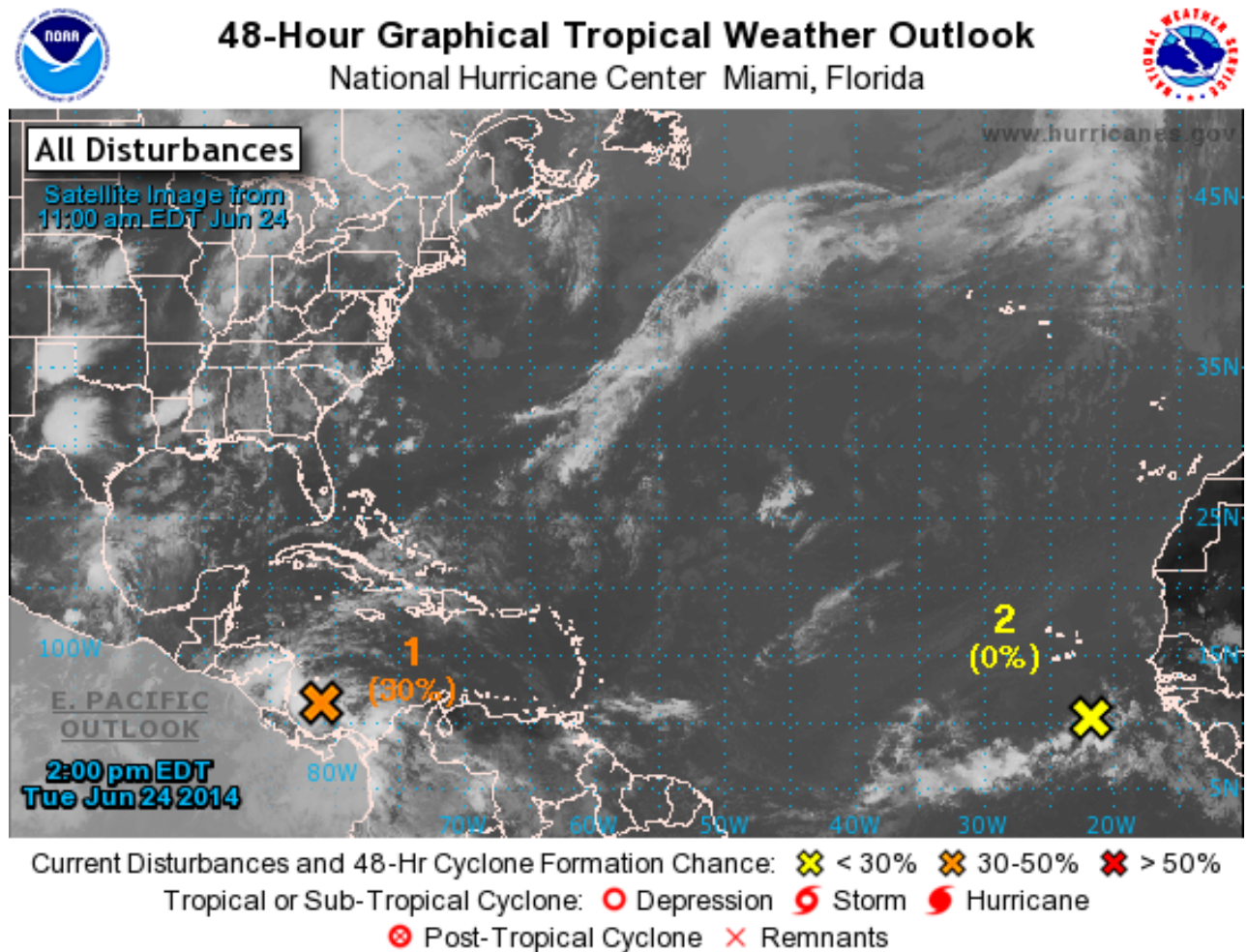
The new five-day GTWO, available for both the Atlantic and eastern North Pacific basins, will indicate the formation potential of current and future disturbances during the next five days. Shaded areas will represent the potential tropical cyclone formation areas, color-coded by development likelihood, with yellow representing a low (<30%) chance, orange denoting a medium (30% to 50%) chance, and red corresponding to a high (>50%) chance of tropical cyclone formation during the next five days. The location of each current disturbance will be denoted by an "X". A mouse-over feature will allow users to see the accompanying Outlook text for each system. Clicking on an area will display a graphic showing only that disturbance, which should improve clarity when the forecast genesis areas overlap. Because the new five-day GTWO will tend to be busier than the current 48-hour GTWO, the five-day graphic will not display the locations of existing tropical cyclones.

Here is an example of the new five-day GTWO:



Also effective at 2 p.m. EDT July 1<sup>st</sup>, the 48-hour GTWO will no longer indicate the locations of disturbances by encircling them. Instead, for consistency with the new five-day graphic, locations of current disturbances will be marked with an “X”. Active tropical cyclones will continue to be depicted on the 48-hr GTWO.

Here is an example of the new 48-hour GTWO:



The five-day and 48-hour GTWO products are accessed by clicking onto “Graphic Tropical Weather Outlook” just below the Tropical Cyclone Activity map on the NHC website at [www.hurricanes.gov](http://www.hurricanes.gov)

The GTWO and TWO products are issued at 2 a.m., 8 a.m., 2 p.m. and 8 p.m. Eastern Daylight Time. During Eastern Standard Time, they are issued at 1 a.m., 7 a.m., 1 p.m. and 7 p.m.

**Contact:** NHC Public Affairs: [nhc.public.affairs@noaa.gov](mailto:nhc.public.affairs@noaa.gov)

June 30, 2014